

# FIS STRATEGIC PLAN

2021-2026

FIS will continue to embrace an inquiry and research-based pedagogy which empowers the learner to take ownership of an inclusive and quality international education.

## Learning & Teaching



FIS will work with the Fukuoka community to enhance the learner experience and maximize learning opportunities.

## Outreach & Development



FIS will nurture and promote the wellbeing of the learning community.

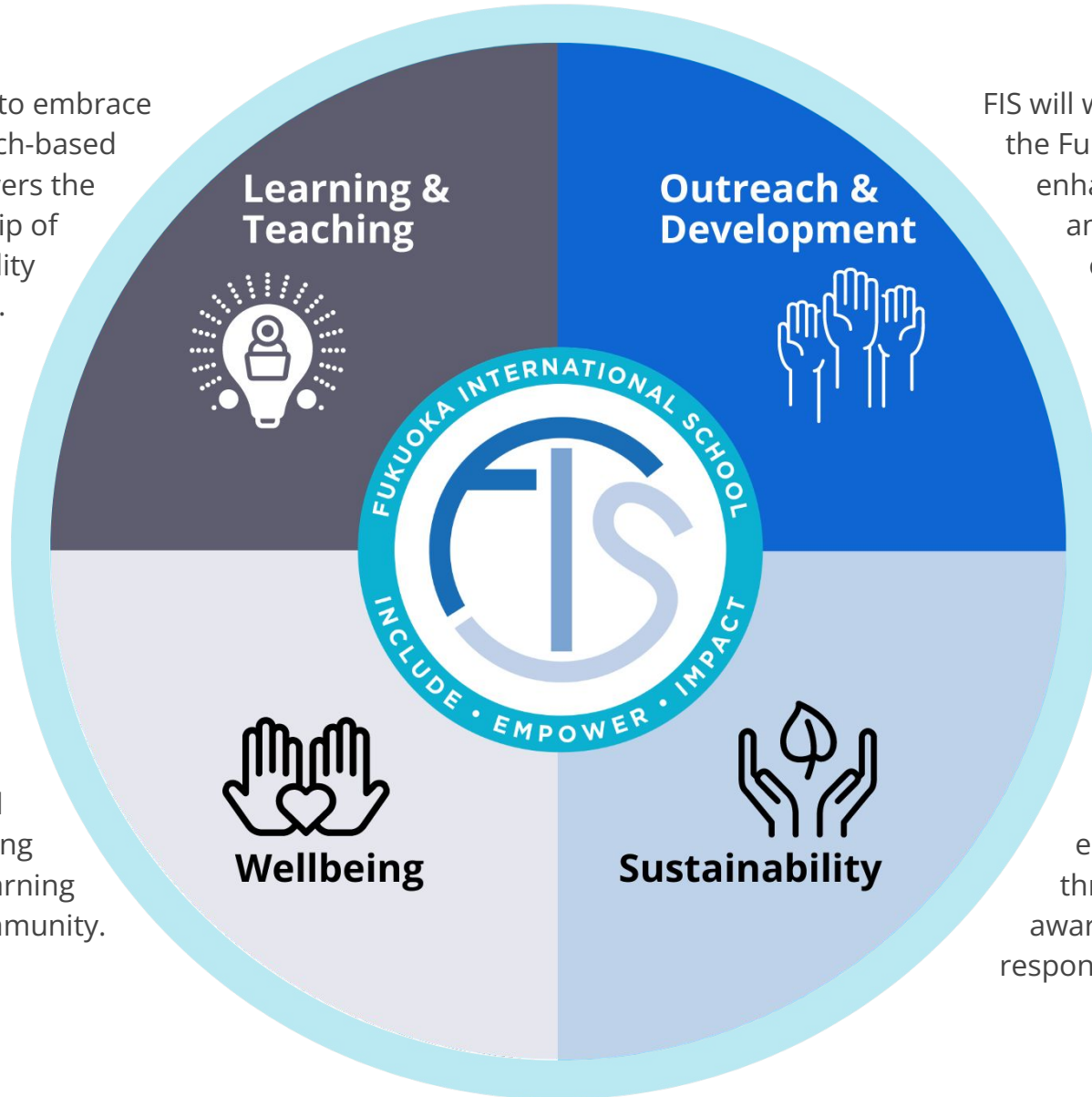


## Wellbeing

FIS aims to become more environmentally sustainable through building a culture of awareness, understanding, and responsibility.



## Sustainability



# LEARNING & TEACHING



FIS will continue to embrace an inquiry and research-based pedagogy which empowers the learner to take ownership of an inclusive and quality international education.

- Implement learning programs that are engaging, innovative, and internationally-minded through expanding course offerings, technology, and continuous curriculum and professional development.
- Collaborate and communicate with the learning community to positively impact learning and teaching.
- Ensure that individual needs of all learners (students, parents, staff, and all community members) are met.
- Seek out and retain highly qualified, passionate staff members who embody and embrace our guiding statement.
- Empower the learning community by promoting agency and increasing opportunities.

# OUTREACH & DEVELOPMENT



FIS will work with the Fukuoka community to enhance the learner experience and maximize learning opportunities.

- Promote a culture of community involvement that provides a valuable resource to FIS and its learners.
- Enrich relationships with local and international educational institutes, businesses, and organizations for mutual benefit and growth.
- Strengthen and promote a community spirit that values diversity and open-mindedness.
- Promote FIS as a leading school regionally and globally to ensure steady enrolment levels and financial sustainability.
- Continue to enhance our Learning and Teaching facilities to support our programs and become more inclusive.

# WELLBEING

---

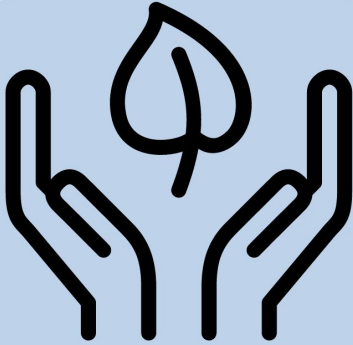


FIS will nurture and promote the wellbeing of the learning community.

- Foster an inclusive learning environment that is safe, encouraging, and challenging for all learners.
- Strengthen opportunities and accessibility to enhance the physical, social, and emotional wellbeing of all learners.
- Guide our learners towards a balanced approach to wellness, empowering them to make informed and responsible personal life decisions.

# SUSTAINABILITY

---



FIS will become more environmentally sustainable through building a culture of awareness, understanding and responsibility.

- Understand and reduce our environmental impact as a school and as a learning community.
- Provide opportunities to educate and empower learners to take action on real-world environmental issues.
- Review and develop policies and systems that support our sustainable approach and will have a positive environmental impact.