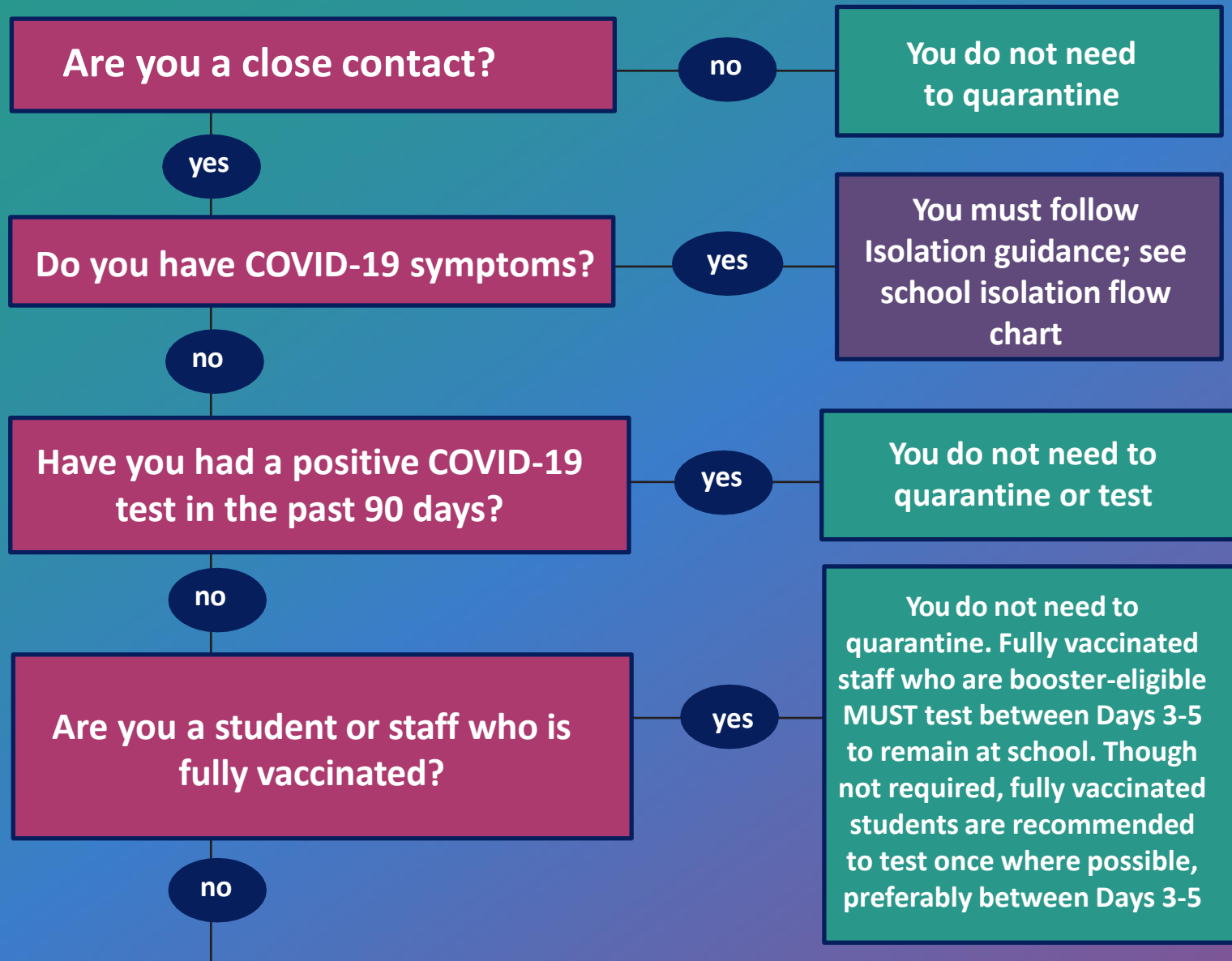


INDIVIDUAL CONTACT TRACING SCHOOL QUARANTINE FLOW CHART



You must quarantine
 You may end your quarantine after either:

- Ten (10) full days from your last known contact. Activities resume on Day 11.

OR

- Five (5) full days from your last known contact if you have a negative viral test collected on or close to Day 5. Activities may resume as early as Day 6.

Some unvaccinated students with an exposure may remain in school and participate in school activities if they meet the criteria below:

- They do not have symptoms.
- They had a mask-on-mask school exposure and test negative at least once, preferably on a specimen collected on or around Days 3-5. If testing resources are available, testing twice is recommended, preferably immediately after exposure notification and again on or around Day 5.
- They wear a well-fitting mask at all times at school, indoors and outdoors, except when eating or drinking.
- They monitor for symptoms for 10 days. If they have symptoms, they must follow isolation guidance and test immediately.