

# VOTER INFORMATION FOR THE FEBRUARY 8 ELECTION

Three Local Education Levies to Support  
Excellence for Every Student

2022



**PROPOSITION 1:**  
Replacement of Existing  
Educational Programs  
and Operations Levy



**PROPOSITION 2:**  
Replacement of Existing  
School Technology and  
Capital Projects Levy



**PROPOSITION 3:**  
Building Excellence  
Construction Levy



For more information, scan or visit  
<https://www.lwsd.org/education-levies>

Questions can be directed to  
[communications@lwsd.org](mailto:communications@lwsd.org) or (425) 936-1342





## PROPOSITION 1: Replacement of Existing Educational Programs and Operations Levy (EP&O)



Replacing the existing EP&O levy ensures our students have continued access to staff, programs and course offerings to be successful and graduate future-ready.

The levy is 14% of our total budget and continues funding for staff, opportunities and programs not fully funded by the state, including:



**School staff, with a focus on social emotional support**, including school nurses, counselors, substitutes, health room staff, mental health staff and campus safety staff.



**Opportunities for students**, including additional course offerings such as a seven-period high school day, summer learning, music and arts programs and extracurricular activities, including athletics.



**Early learning programs for our youngest learners**, including programs such as Special Education Preschool and Head Start.



## February 8 levies: Continued funding for Lake Washington School District students, staff and schools

### What is the cost for these three local education levies?

The total tax rate for all three LWSD measures would be \$2.84 per \$1,000 of assessed property value. The current rate is \$2.57 per \$1,000 of assessed property value.

Lake Washington School District has the lowest tax rate compared to our neighboring school districts. All funding approved by LWSD voters stays in our district to support LWSD students, staff and schools.





## PROPOSITION 2: Replacement of Existing School Technology and Capital Projects Levy



Replacing the existing Technology and Capital Projects Levy provides students with access to technology and critical facility upgrades not funded by the state.

The levy continues funding for:

**Technology for students, staff and classrooms**, including computers for students, classroom technology and professional development for new instructional technology and software.

**Technology systems to support our schools**, including access to digital learning and assessment tools to support student learning and technology infrastructure and support for our district.

**Building updates to maintain our investments in schools**, including replacing aging building systems, health and safety improvements and school campus improvements such as athletic playfields and playgrounds that need replacing to ensure safety, and health and safety improvements such as fire alarm systems, and improving student drop-off/pick-up traffic flow.



## PROPOSITION 3: Building Excellence Construction Levy



This levy will fund school construction to make sure our students have room to learn in our fast-growing district.

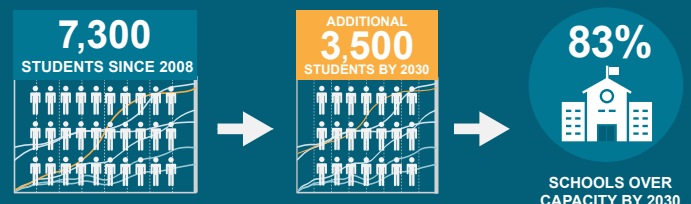
The levy will reduce overcrowding throughout our district by adding classroom space for over 2,300 students:

- Add a new elementary school on underdeveloped land on Redmond Elementary Campus, with up to 24 classrooms for about 550 students.
- Additions at Finn Hill, Kirkland and Redmond middle schools, providing capacity for 600 more students.
- Additional high school capacity for about 1,200 more students.
- Acquisition of property for future schools.

## Lake Washington School District is the fastest-growing school district in King County



*With more than 30,500 students and 57 schools, LWSD is the second-largest district in the state.*



This continued growth means our schools are becoming overcrowded and have a growing reliance on portable classrooms. The Building Excellence levy will add classroom space now and help us plan for future growth.

The Lake Washington School District does not discriminate on the basis of race, color, national origin, sex, disability, age, gender, marital status, creed, religion, honorably discharged veteran or military status sexual orientation, gender expression, gender identity, the presence of any sensory, mental or physical disability, the use of a trained guide dog or service animal by a person with a disability, in its programs and activities and provides equal access to the Boy Scouts and other designated youth groups. The Lake Washington School District offers classes in career and technical education program areas under a non-discriminatory policy. Specifically, the Lake Washington School District offers classes to students based on educational criteria in programs like Auto Tech, Family Consumer Science, etc, through an enrollment process that is free from discrimination. For more information about the application process and particular course offerings, contact the Career & Technology office at (425) 936-1387. English language proficiency is not a consideration in the offering of classes or the participation requirements for career and technical education classes. This notification can be provided in the appropriate language for communities of national origin by contacting our Communications Department at (425) 936-1300. The following employees have been designated to handle inquiries regarding the nondiscrimination policies:

**Civil Rights Coordinator**


Executive Director of Human Resources  
16250 NE 74th Street, Redmond, WA 98052  
(425) 936-1266  
civilrights@lwsd.org

**Title IX Coordinator**

Director of Athletics and Activities  
16250 NE 74th Street, Redmond, WA 98052  
(425) 936-1289  
titleix@lwsd.org

**Section 504/ADA Coordinator**

Executive Director of Special Services  
16250 NE 74th Street, Redmond, WA 98052  
(425) 936-1407  
section504@lwsd.org



# PLEASE REMEMBER TO VOTE BY TUESDAY, FEBRUARY 8



## Building Excellence: A Community Effort

Thank you to the community-led Facility Advisory Committee for making recommendations to shape our Building Excellence levy. These recommendations helped us focus our priorities on making sure students have room to learn in our fast-growing district. You can read more about our Building Excellence levy and our two replacement levies inside.

### What's inside?

Learn more about Lake Washington School District's three local funding measures on the ballot:



**PROPOSITION 1:**

Replacement of Existing Educational Programs and Operations Levy



**PROPOSITION 2:**

Replacement of Existing School Technology and Capital Projects Levy



**PROPOSITION 3:**

Building Excellence Construction Levy

## How do I vote?

- Vote by mail, no stamp needed.
- All registered King County voters will receive a ballot in the mail around January 20.
- Ballots are due by mail or drop box by Tuesday, February 8, 2022 at 8 p.m.

Visit King County Elections for more information, including senior citizen and disabled citizen exemptions.

<https://kingcounty.gov/depts/elections.aspx>