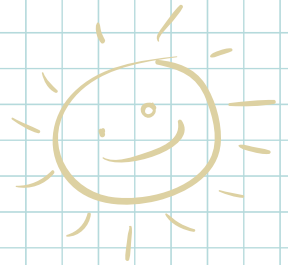


TOWN OF RIB MOUNTAIN

PARK COMMISSION

Valentine's

"Explore the Outdoors" Word Search

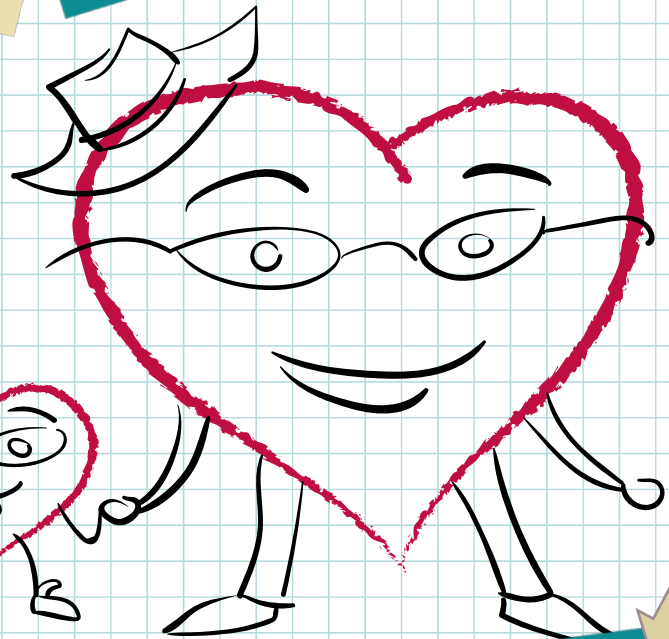
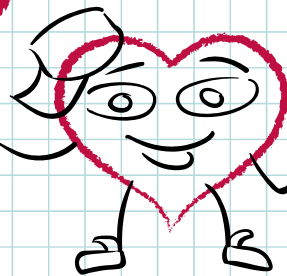
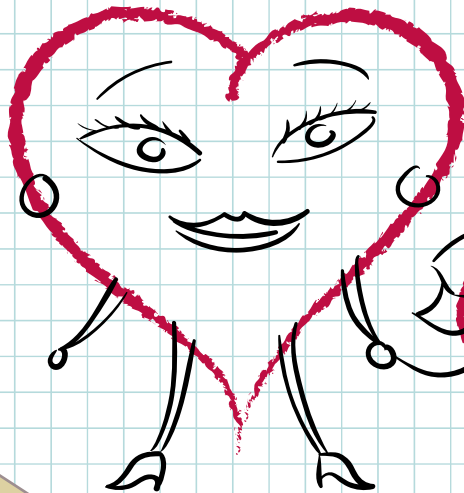


OUTDOOR

PARKS

FUN

FAMILY



Pick up Forms at:

DOEPKE PARK KIOSK

Jan 22nd – Feb 9th

**GO OUT TO THE PARKS & FIND THE
LETTERS POSTED TO MAKE WORDS
IN A PHRASE.**

For more information please visit our Website at:
<https://www.ribmountainwi.gov/>
News & Announcements

Bring Completed form to the
DOEPKE PARK SHELTER

February 12th, 2022
9:00 AM – 1:00 PM

To receive a goodie grab
bag and a chance to win a prize

*This is not a Wausau School District sponsored activity
and the opinions expressed are not necessarily those of the school district or its personnel.*



TOWN OF RIB MOUNTAIN

Where Nature, Family & Sport Come Together

The Town of Rib Mountain Park Commission Invites you to:

Valentine's Day "Explore the Outdoors" Word Search

To celebrate **Valentine's Day 2022**, the Town of Rib Mountain Park Commission is sponsoring an outdoor word search activity for families and students.

HERE'S HOW IT WORKS:

- Letters of the alphabet that form words in a phrase - related to Valentine's Day - have been attached to trees, poles, and buildings at six different hiking trails and parks in Rib Mountain.
- Pick up a form, with a map on one side and a chart on the other side, at the Doepke Park kiosk between January 22nd and February 9th.
- Then, head out to each location to find the letters and complete the phrase.
- All letters have been posted eight feet above the ground in plain sight, so be sure to look up and at the same time, look around and enjoy the beauty and fun available at these Rib Mountain outdoor venues.



EXAMPLE:

Find 8 letters posted on the Trillium hiking trail that spell 3 words. Arrange these letters on your form to make part of the phrase related to Valentine's Day.

(B _ _ _ _ _ T _ _)

Turn in your completed form at the Doepke Park Shelter on February 12th, between 9 AM and 3 PM. All contestants will receive a Valentine goodie grab bag and a chance to win a prize.

(Please observe the current Covid-19 guidelines by wearing a mask and practicing social distancing while at the Doepke Shelter)

- Each individual or child in a family may complete the quest and submit one form.
- Please take only one form from the kiosk for each participant, since the number of forms taken will help determine the number of prizes needed.
- Please do not remove or deface the letters of the alphabet posted for this event.



Have fun and enjoy the outdoors while you test your unscrambling skills!

Sponsored by the Town of Rib Mountain Park Commission.

This is not a Wausau School District-sponsored activity and the opinions expressed are not necessarily those of the school district or its personnel.