



Activities Booklet

SPRING TERM

We are delighted to present the Activities Brochure for Spring This is a packed programme that is sure to excite, entertain and educate. Activities are at the heart of life at Bede's and whatever your interests, we're sure that you'll find something that you will love doing.

These co-curricular activities enable everyone to develop their strengths, qualities and their self-confidence in order to help them flourish. They teach courage, curiosity and compassion, as well as making many lifelong friendships and memories that last far beyond Bede's. Playing a full and wholehearted part within the Activities programme is key in developing the connection needed with others in order to build our kind hearted community. It is also integral in fulfilling our mission for everyone in the School to find joy in the pursuit of brilliance. Therefore we hope that everybody finds their niche, enabling them to release their talents within a world of opportunities. You are at Bede's for several years, but these experiences help to form who you are for the rest of your life.

Therefore please take this opportunity to get involved, try something new, make friends and get active. A huge thank you to all the staff who contribute to this wonderfully diverse programme as, without their hard work and creativity, none of this would have been possible.

Activities fall under 4 different categories - Sport, Enrichment, Academic and Creative & Performing Arts. Every pupil of the school needs to sign up for three activities per week - and would recommend a range of activities that include at least one that is a sporting/exercise choice. Some activities are only suitable for certain year groups and you'll see that these are highlighted in each individual section. Certain activities have an extra cost associated with them, and these will also be highlighted.

Sporting Activities are truly important in making sure that you're fit & active, whether it's a team or individual sport, we encourage all students to pick at least one sporting activity. For those students who live for sport, we want to make the most of the months ahead. For everyone else, we want you to stay fit & healthy as we genuinely believe in good health and exercise for all.

There are Academic Activities providing the chance to support pupils with their studies, or extend them and push them further within an impressive supra-curricular programme. Applying for Oxbridge entry, preparing to study A-Level Maths or learning Japanese are amongst the wide range of Academic Activities. Pupils can join a Film Club, spend

time in our fantastic Zoo or get those baking skills up-to-scratch (and hopefully bake some cakes for parents to enjoy).

Finally there are the Performing & Creative Arts Activities: amongst the highlights are our superb Legat teachers offering a range of dance related activities, the music department having socially distanced choirs & bands with the Art Department available every Activity.

Most activities are Open to All, meaning that anyone can join the activity. Some activities are Invite Only in which case many pupils will have already been invited, however you can email the teacher in charge of that activity to also request an invite. If you have any questions about an activity, you can contact the teacher in charge of the activity who is listed in each listing.

We hope that Parents & Guardians spend half an hour reading through this programme - and deciding, with their children, which activities to choose. It's important to strike the right balance with the four different themes and pupils may benefit from some guidance with this.

There's never been a more important time to develop hobbies, passions and interests to run alongside our academic programme. Research tells us that they definitely assist in the development of a sense of well-being, promoting positive mental health and building self-confidence. We hope that pupils are looking forward to the programme as much as the staff who are running these exciting activities. Please do share with us photos, videos and stories about all that is going on.

Enjoy reading this brochure and remember to sign up to your Activities on Wednesday 15 December

Phil Wise
Deputy Head Operations

All activities are free (except where stated)
Students should pick a variety of activities
Pupils are expected to select three activities a week
To join 'Invite Only', email the teacher and request access

Key to Activities

Activity name

Activity teacher

Who is the activity open to:

Green is those years

Red is not those years

Can anyone take part or is it invite only

Day(s)

Extra charge for activity

- Enrichment
- Sport
- Academic
- Arts

MON £

SPANISH FOR JUNIORS

Walker

FY
L5
U5
P6
L6
U6

Invite Only

An activity targeted at L5 and U5 students of GCSE Spanish who are aiming to achieve the very best grades! it will enhance their understanding of grammar and tenses, thereby improving their spoken and written flexibility and accuracy.

Activity description

Contents

Sports	P5
Enrichment	P11
Academic	P16
Creative & Performing Arts	P20



A young man with short, dark hair is standing on a lush green soccer field. He is wearing a green long-sleeved jersey with three white horizontal stripes, green shorts, and green socks with white stripes. He is wearing pink and black soccer cleats. A white soccer ball with red and black patterns is on the grass in front of him. The background consists of a line of trees with some autumn-colored leaves under a clear blue sky. A white rectangular box is superimposed over the center of the image, containing the word "SPORT" in a bold, white, sans-serif font.

SPORT

THURS

ALTERNATIVE SPORTS

Hickman

FY L5 U5 P6 L6 U6

Open to All



The extreme sports activity for the summer term will be wake-boarding. Come and learn to do this exciting sport on a fixed line at Hove Lagoon (Lovely cafe and outdoor tables to take in the sunshine whilst waiting for your ride!) £150 per term

THURS

BADMINTON

Stainsby

FY L5 U5 P6 L6 U6

Open to All



Badminton players of all standards are welcome to join this activity that takes place in the off-site. All years & All players welcome.

TUES

BADMINTON (COACHED)

Driver

FY L5 U5 P6 L6 U6

Open to All



Badminton players of all standards are welcome to join this activity that takes place in the off-site. Those wishing to improve their badminton skills welcome

TUES/THURS

CLIMBING

Worrall

FY L5 U5 P6 L6 U6

Open to All



Come and join us bouldering at Boulder Brighton. It's rock climbing without the hassle of harnesses and ropes. We leave at lunchtime and return in time for buses. All abilities welcome. £150 per term

THURS

CRICKET

Various

FY L5 U5 P6 L6 U6

Open to All



We are currently considered to be one of the top cricket schools nationally. Our U17 team were National Runners Up in 2019; our U15 Boys were named National Champions in 2018; and our U15 Girls were declared National Champions twice in 2019.

MON

CRICKET JUNIORS

Lenham, Taylor, Wells

FY L5 U5 P6 L6 U6

Invite Only



We are currently considered to be one of the top cricket schools nationally. Our U17 team were National Runners Up in 2019; our U15 Boys were named National Champions in 2018; and our U15 Girls were declared National Champions twice in 2019.

TUES

CRICKET SENIORS

Lenham, Wells

FY L5 U5 P6 L6 U6

Invite Only



We are currently considered to be one of the top cricket schools nationally. Our U17 team were National Runners Up in 2019; our U15 Boys were named National Champions in 2018; and our U15 Girls were declared National Champions twice in 2019.

TUES

CROSS COUNTRY

Potter, Hayes

FY L5 U5 P6 L6 U6

Open to All



An opportunity to get out and sample the beautiful Sussex countryside on a cross country run. Whether it rains or shines, you'll at least be getting fit.

MON

DARTS

Corbishley

FY L5 U5 P6 L6 U6

Open to All



Come and join us if you love darts or are curious. We'll have competitions, practice, drills, walk-ons, a caller, coaching and much, much more!

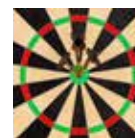
TUES/THURS

DARTS

Trenaman

FY L5 U5 P6 L6 U6

Open to All



Come and join us if you love darts or are curious. We'll have competitions, practice, drills, walk-ons, a caller, coaching and much, much more!

MON/TUES/THURS

DOWNLAND WALKING

Various

FY L5 U5 P6 L6 U6

Open to All



Join us and experience the South Downs in all their glory. Whether you are an experienced hiker or new to the activity, you'll be welcomed as we trek through the glorious countryside.

MON/TUES/THURS

FOOTBALL 1ST XI

Various

FY L5 U5 P6 L6 U6

Invite Only



Football training and practice including some futsal, fitness and conditioning work. This invite only session is for members of Bede's 1st XI

MON/TUES/THURS

FOOTBALL 2ND XI

Adlam, Hodges

FY L5 U5 P6 L6 U6

Invite Only



Football training and practice including some futsal, fitness and conditioning work. This invite only session is for members of Bede's 2nd XI

TUES/THURS

FOOTBALL 3RD XI

Jackson, Sealey

FY L5 U5 P6 L6 U6

Invite Only



Football training and practice including some futsal, fitness and conditioning work. This invite only session is for members of Bede's 3rd XI

TUES/THURS

FOOTBALL 4TH XI

Various

FY L5 U5 P6 L6 U6

Invite Only



Football training and practice including some futsal, fitness and conditioning work. This invite only session is for members of Bede's 4th XI

TUES/THURS

FOOTBALL 5TH XI

Various

FY L5 U5 P6 L6 U6

Invite Only



Football training and practice including some futsal, fitness and conditioning work. This invite only session is for members of Bede's 5th XI

MON/TUES

FOOTBALL GIRLS

Byrne

FY L5 U5 P6 L6 U6

Open to All



Fitness, dexterity, agility, teamwork - but most of all, having a good time and enjoying your sport. Whether you want to improve, or spend time with friends, enjoy these friendly competitive sessions with expert coaches.

MON/TUES/THURS

FOOTBALL U14A

Blaney, Gibbs

FY L5 U5 P6 L6 U6

Invite Only



Football training and practice including some futsal, fitness and conditioning work. This invite only session is for members of Bede's U14A.

MON/THURS

FOOTBALL U14B

Various

FY L5 U5 P6 L6 U6

Invite Only



Football training and practice including some futsal, fitness and conditioning work. This invite only session is for members of Bede's U14B.

MON/TUES/THURS

FOOTBALL U15A

Harding, Manos

FY L5 U5 P6 L6 U6

Invite Only



Football training and practice including some futsal, fitness and conditioning work. This invite only session is for members of Bede's U15A.

MON/THURS

FOOTBALL U15B

Whitaker, Young

FY L5 U5 P6 L6 U6

Invite Only



Football training and practice including some futsal, fitness and conditioning work. This invite only session is for members of Bede's U15B.

TUES/THURS

GOLF ACADEMY

Betts, Collier

FY L5 U5 P6 L6 U6

Open to All



The Golf academy is intended for experienced players who are looking to reduce their handicap, it is limited to 5 players per session. The activity takes place at East Sussex National, working with ex-tour professional Jack Budgen. £140 per term

MON

GOLF DRIVING RANGE

Betts

FY L5 U5 P6 L6 U6

Open to All



Open to any budding golf enthusiasts, we use the Horam driving range, this activity is £120 per term

MON/TUES/THURS

HOCKEY 1ST XI

Various

FY L5 U5 P6 L6 U6

Invite Only



Our innovative Hockey programme, centred around the individual, offers pupils an unrivalled coaching provision across all three terms. We pride ourselves on developing individuals to play hockey for life.

MON/THURS

HOCKEY 2ND XI

Various

FY L5 U5 P6 L6 U6

Invite Only



Our innovative Hockey programme, centred around the individual, offers pupils an unrivalled coaching provision across all three terms. We pride ourselves on developing individuals to play hockey for life.

TUES

HOCKEY BOYS JUNIOR

Waterhouse, Fahmy

FY L5 U5 P6 L6 U6

Open to All



Our innovative Hockey programme, centred around the individual, offers pupils an unrivalled coaching provision across all three terms. We pride ourselves on developing individuals to play hockey for life.

MON/TUES/THURS

HOCKEY GIRLS 1ST XI

Dowse

FY L5 U5 P6 L6 U6

Invite Only



Training for the 1st XI Girls Hockey Team

MON/TUES/THURS

HOCKEY GIRLS U16

Various

FY L5 U5 P6 L6 U6

Invite Only



Our innovative Hockey programme, centred around the individual, offers pupils an unrivalled coaching provision across all three terms. We pride ourselves on developing individuals to play hockey for life.

MON/TUES/THURS

HOCKEY U14/U15 A

Various

FY L5 U5 P6 L6 U6

Invite Only



Our innovative Hockey programme, centred around the individual, offers pupils an unrivalled coaching provision across all three terms. We pride ourselves on developing individuals to play hockey for life.

THURS

HORSE RIDING

Shepherd

FY L5 U5 P6 L6 U6

Open to All



Suitable for all abilities. Learn to ride or improve your skills and fitness. £150 per term

MON/TUES/THURS

JOGGING FOR FUN

Various

FY L5 U5 P6 L6 U6

Open to All



Come and join us for a jog around the reservoir or local countryside, gentle exercise and fresh air, beginners may walk and work up to a jog.

THURS

MARTIAL ARTS

Clark, Logan

FY L5 U5 P6 L6 U6

Open to All



Welcome to Martial Arts! Here we will learn in a variety of styles including karate, judo and ju-jitsu. It caters for all fitness levels as well as skill levels. We will learn kicks, punches, blocks and some self-defence moves.

MON/THURS

NETBALL U14A

Various

FY L5 U5 P6 L6 U6

Invite Only



Netball Training for the U14A team.

MON/THURS

NETBALL U15A

Various

FY L5 U5 P6 L6 U6

Invite Only



Netball Training for the U15A team.

MON/THURS

NETBALL U15B

Various

FY L5 U5 P6 L6 U6

Invite Only



Netball Training for the U15B team.

TUES/THURS

NETBALL U16

Henry, Merchant

FY L5 U5 P6 L6 U6

Open to All



Netball Training for the U16 team.

TUES/THURS

NETBALL U19A

Newberry, Howard

FY L5 U5 P6 L6 U6

Invite Only



Netball Training for the U19A team.

MON

OPEN DANCE

Lowe

FY L5 U5 P6 L6 U6

Open to All



Available for all Bedians who would like to dance, Open Dance will focus on Jazz Dance will give you the opportunity to take class and learn a Jazz routine.

MON

RUGBY SEVENS

Smith, Taylor

FY L5 U5 P6 L6 U6

Open to All



Don't be a part of that losing team! Join the rugby sevens team and improve your fitness, teamwork and be part of a winning team.

THURS

SCUBA DIVING

Betts

FY L5 U5 P6 L6 U6

Open to All



Learn to scuba dive with PADI training. State of the art training methods and materials for all your diver training needs. Off-site.

TUES



SHOWJUMPING

McKeogh

FY L5 U5 P6 L6 U6

Open to All



Full range of show jumps for pupils... our show jumping activity has everything from wings and fillers to full jumps and courses.

THURS



SNOOKER

Driver

FY L5 U5 P6 L6 U6

Open to All



Players of all abilities are invited to join Snooker, where expert training is on hand with our very own resident snooker Expert, Nik 'the Hurricane' Driver. Improve your technique, positioning and gameplay.

MON/TUES

SQUASH

Abrams, Mutimba

FY L5 U5 P6 L6 U6

Open to All



Join our squash activity - all ages & all abilities welcome. Whether you are a beginner or an experienced Pro, you'd be more than welcome to join us.

THURS



SQUASH COACHING

Meredith

FY L5 U5 P6 L6 U6

Open to All



Join our squash coaching activity - all ages & all abilities welcome. Whether you are a beginner or an experienced Pro, you'd be more than welcome to join us. £50 per term,

MON/TUES/THURS

SWIMMING - LANE SWIMMING

Reed

FY L5 U5 P6 L6 U6

Open to All



The Swimming Programme runs throughout the academic year. Swimmers at Bede's enjoy our 25 metre, 6 lane competition size swimming pool.

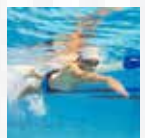
MON/TUES/THURS

SWIMMING SQUAD

Osborn

FY L5 U5 P6 L6 U6

Invite Only



The Swimming Programme runs throughout the academic year. Swimmers at Bede's enjoy our 25 metre, 6 lane competition size swimming pool.

MON/TUES/THURS

TENNIS DEVELOPMENT

Various

FY L5 U5 P6 L6 U6

Open to All



As with our other sports, we value both performance and participation; offering a tennis programme offering different pathways for club, development and academy players.

MON

TENNIS ELITE

Scollo

FY L5 U5 P6 L6 U6

Invite Only



As with our other sports, we value both performance and participation; offering a tennis programme offering different pathways for club, development and academy players.

TUES/THURS

WEIGHTS & FITNESS

Various

FY L5 U5 P6 L6 U6

Open to All



Pupils can take advantage of our exceptionally well-equipped Fitness Suite during Activities sessions (which are also available during the day and in evenings and weekends).

THURS



YOGA HATHA ADVANCED

Newton-Smith

FY L5 U5 P6 L6 U6

Open to All



We offer yoga sessions with a fully-trained Yoga instructor during Activity sessions which cover beginners and intermediate Hatha Yoga which focus on the classical postures, alignment and breath. £65 per term.

TUES



YOGA HATHA BEGIN/INTER

Newton-Smith

FY L5 U5 P6 L6 U6

Open to All



We offer yoga sessions with a fully-trained Yoga instructor during Activity sessions which cover beginners and intermediate Hatha Yoga which focus on the classical postures, alignment and breath. £65 per term.

MON



YOGA VINYASA FLOW BEGIN/INTER

Bowley

FY L5 U5 P6 L6 U6

Open to All



We offer yoga sessions with a fully-trained Yoga instructor during Activity sessions which cover beginners and intermediate Hatha Yoga which focus on the classical postures, alignment and breath. £65 per term.

A detailed illustration of a ring-tailed lemur perched on a thick, brown tree branch. The lemur has a greyish-brown body with a white chest and a long, bushy tail with prominent black and white horizontal stripes. It has large, dark eyes and a black face with white markings around the eyes. The lemur is looking directly at the viewer. The background is a solid teal color. There are several green leaves and clusters of small white flowers hanging from the branches. A white rectangular box with a thin black border is centered over the lemur's body, containing the word "ENRICHMENT" in bold, white, uppercase letters.

ENRICHMENT

TUES

BEDE'S ENTERPRISE CHALLENGE

Hartery, Jackson

FY L5 U5 P6 L6 U6

Open to All



Each term we plan and host business activities around the school to raise money for charity. In doing this, you gain Entrepreneurial skills such as risk-taking, managing and marketing an event as well as developing and analysing financial statements.

MON

BRIDGE & OTHER CARD GAMES

Richards

FY L5 U5 P6 L6 U6

Open to All



Bids, breaks and slams reach a new level of fun on learning adventures featuring bridge and other games. Enjoy friendly tournaments and learn from top-instructors.

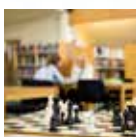
MON/THURS

CHESS CLUB

Froom

FY L5 U5 P6 L6 U6

Open to All



Learn how to play chess! Improve your chess playing! Get expert coaching from our resident in-house Grandmaster.

MON/TUES/THURS

COOKING

Leggett

FY L5 U5 P6 L6 U6

Open to All



Want to make whole meals for Autumn? Looking forward to sharing delicious dishes with friends? This activity is suitable for those who like getting into the kitchen at home but want to increase their cooking skills.

MON

CREST AWARD

Morton-Freeman

FY L5 U5 P6 L6 U6

Open to All



The Crest award system encompasses the development of innovative ideas, fine tunes investigative design and reporting of a chosen STEM project from start to finish.

MON

BIG IDEAS IN THE MEDIA

Costi

FY L5 U5 P6 L6 U6

Open to All



The media is a good channel for communicating philosophy. This activity is designed to explore and discuss some big ideas in a relaxed, informal setting. It should be both thought-provoking and entertaining at the same time!

MON

CERAMICS

Hammond

FY L5 U5 P6 L6 U6

Open to All



Ceramics is an opportunity to get away from a screen and create with clay. Relax and explore the possibilities with making items our of clay. No experience needed. Bring your own ideas or choose from the projects available.

MON

COMEDY WRITING

Arduino

FY L5 U5 P6 L6 U6

Invite Only



This course is designed for those who want to make the world laugh by writing comedy for stage and screen.

THURS

CREATIVE WRITING

Oliver

FY L5 U5 P6 L6 U6

Open to All



Finding your writing voice is a bit like finding your voice in life, and this course will help you let go of writing inhibitions and discover your individual expression.

MON

COMPETITIVE DEBATING FOR SENIORS

Curtis

FY L5 U5 P6 L6 U6

Open to All



Do you want to improve your debating skills? Do you enjoy discussing current affairs? Or do you simply want a way to release a little bit of stress through a good discussion? Please join us for our debating club.

TUES/THURS

DOFE BRONZE AND SILVER

Various

FY L5 U5 P6 L6 U6

Open to All



The DofE is the world's leading youth achievement award, giving millions of 14 to 24-year-olds the opportunity to be the very best they can be. This sessions is for Pupils wishing to join the Bronze/Silver Awards.

MON

DOFE GOLD

Rowsell, Danielsen

FY L5 U5 P6 L6 U6

Open to All



The DofE is the world's leading youth achievement award, giving millions of 14 to 24-year-olds the opportunity to be the very best they can be. This sessions is for Pupils wishing to join the Gold Award.

MON

DUNGEONS AND DRAGONS

Peattie

FY L5 U5 P6 L6 U6

Open to All



Enjoy a social activity that encourages teamwork and cooperation to solve problems. It is an interactive story in which you play a role as a character or narrator (if you wish to run it). Other story or tabletop games welcome.

MON/TUES

EAL CLUB

Dogzic

FY L5 U5 P6 L6 U6

Open to All



The EAL Club provides our EAL community with a chance to improve their language skills through a variety of interactive activities that aim to be educational, exciting and fun.

MON/TUES

EAL MAHJONG CLUB

Cook

FY L5 U5 P6 L6 U6

Open to All



Come and play some Mahjong (experienced players only), as well as a little bit of cooking and EAL support.

MON

ECO SCHOOLS

Mansfield, Slinger

FY L5 U5 P6 L6 U6

Open to All



Come and help make the school a more environmentally friendly place. As a group, we will come up with initiatives to improve the school's carbon footprint.

THURS

ESPORTS

Betts

FY L5 U5 P6 L6 U6

Open to All



The British Esports Championships is a competitive video gaming competition for students in schools and colleges across the UK. Tournaments include Rocket League (3v3), Overwatch (6v6) and League of Legends (5v5).

THURS

FILM CLUB

Cheshire

FY L5 U5 P6 L6 U6

Open to All



Enjoy a film for a couple of hours. All kinds of themes, genres and eras are covered, with recommendations gratefully considered!

TUES



HISTORY FILM CLUB

Webster

FY L5 U5 P6 L6 U6

Open to All



Learn about new events and people from History! Improve your contextual understanding! Broaden your knowledge! See major events recreated! Enjoy informative and entertaining movies!

TUES



JEWELLERY MAKING (ADVANCED)

McDonnell

FY L5 U5 P6 L6 U6

Open to All



Learn how to make jewellery - precious metals, rings, pendants - the only limit is your imagination!

MON

JEWELLERY MAKING (BEGINNERS)

McDonnell

FY L5 U5 P6 L6 U6

Open to All



Learn how to make jewellery - precious metals, rings, pendants - the only limit is your imagination!

MON

KNIGHTS HOUSE DEVELOPMENT

Franks

FY L5 U5 P6 L6 U6

Open to All



Want to help shape the development of Knights House? Join this activity and help improve and showcase the Knights House community experience for all- think house rules and ethos, layout and space, displays, house socials, food and events.

TUES



KNITTING

Bishop

FY L5 U5 P6 L6 U6

Open to All



Knitting is a great way of keeping yourself occupied, off your phone and it lowers stress! Learn how to knit and create new things like hats, scarves and blankets. You will need your own circular needles and yarn of course.

THURS

MEDITATION

Taylor

FY L5 U5 P6 L6 U6

Open to All



New to meditation? Our easy guided meditation for beginners course will introduce you to mindfulness.

MON

NINTENDO GAMING

Vaux

FY L5 U5 P6 L6 U6

Open to All



Bring along your Switch, another console, some controllers, or some games, and play some Mario Kart or Smash Bros with other people who don't like being outside on spring afternoons!

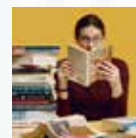
MON/TUES

READING FOR PLEASURE

Evans, Martin

FY L5 U5 P6 L6 U6

Open to All



After the hustle and bustle of a busy Monday morning at school, why not take time at the end of the day to immerse yourself in the escapism of a good book? Join us in the Library for a quiet read of a book of your choice.

MON

ROMCOM FILM CLUB

Logan

FY L5 U5 P6 L6 U6

Open to All



In this course, students will study a different filmmaker, theme, or actor/actress in Romantic Comedy films each week.

MON

SEWING, CRAFT AND DRESSMAKING

Shepherd

FY L5 U5 P6 L6 U6

Open to All



Bring your own project or work with the materials already in the room. Take the opportunity to learn to use a sewing machine.

MON



SKIN SOLACE

Brown

FY L5 U5 P6 L6 U6

Open to All



Come enjoy a relaxing session making soaps, scrubs and more. £60 per term.

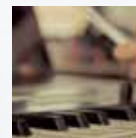
MON

SONGWRITING

Carville

FY L5 U5 P6 L6 U6

Open to All



You may be an excellent songwriter already or never tried to write a song. The most important thing is you have fun - no marks are given and there is no judging - we just want to have fun and be creative.

TUES

SWITCH - A BEDE'S PODCAST

Massa

FY L5 U5 P6 L6 U6

Open to All



Each week we will talk about a positive inclusion story happening at Bede's

MON/TUES/THURS

ZOOLOGICAL SOCIETY

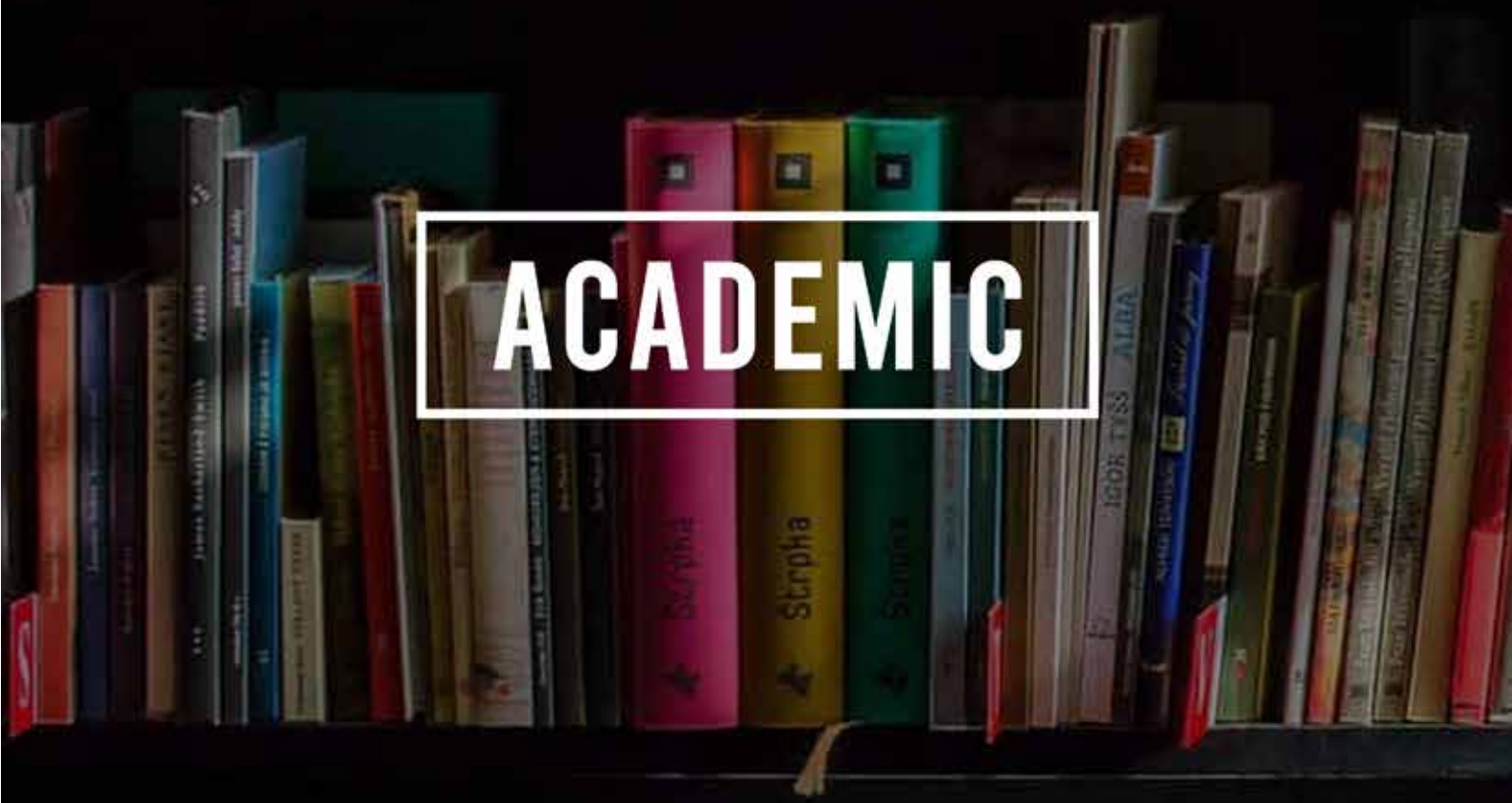
Various

FY L5 U5 P6 L6 U6

Open to All



Looking after the animals in the unit and understanding their welfare needs. Learning good Animal Husbandry.



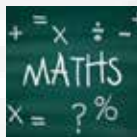
TUES

A LEVEL MATHS SUPPORT

Richards

FY L5 U5 P6 L6 U6

Open to All



Hit the top grades in A-Level Maths & Further Maths with expert support available. This activity is for students in the L6 or U6 studying A level Maths or Further Maths.

TUES

ADVANCED DATABASES

Mutimba

FY L5 U5 P6 L6 U6

Invite Only



The Advanced database activity will enable students to learn how to create and maintain relational databases for business purposes. Students will also learn how to create and program macros to automate some of the processes of databases.

TUES

ANCIENT GREEK

Saoulidou

FY L5 U5 P6 L6 U6

Open to All



Ancient Greek is taught off the timetable to pupils who are interested in achieving a GCSE qualification in this subject. It is also appropriate for out G&T pupils as an enrichment opportunity.

MON

BTEC MARKETING

Waterhouse

FY L5 U5 P6 L6 U6

Invite Only



BTEC Marketing lesson support for exams and coursework to complete the course in a year. Aimed at all students undertaking the program.

TUES/THURS

BUSINESS STUDIES AND ECONOMICS 'CATCH-UP'

King

FY L5 U5 P6 L6 U6

Open to All



Supporting A-Level and GCSE Business and Economics students. This is the perfect opportunity to review and get one-on-one help on topics you find challenging or to work on coursework and prep tasks.

THURS

DT WORKSHOP FOR FUN

Potter

FY L5 U5 P6 L6 U6

Open to All



Design and make anything you like from a small jewellery box to a coffee table. Aimed at anyone with a love of DT.

MON

FRENCH FOR NATIVE SPEAKERS

Ganivet

FY L5 U5 P6 L6 U6

Invite Only



Preparation for examinations for all French native speakers not taking French in the timetable.

MON

GCSE CLASSICAL CIVILISATION

Saoulidou

FY L5 U5 P6 L6 U6

Invite Only



GCSE Classical Civilisation lessons for those studying outside of curriculum time.

MON

GERMAN

Rohmer

FY L5 U5 P6 L6 U6

Invite Only



Vorbereitung auf die Klassenarbeiten Abitur im Fach Deutsch Kandidaten ausserhalb des Stundenplans.

MON

ITALIAN FOR BEGINNERS

Massa

FY L5 U5 P6 L6 U6

Open to All



Learn how to speak Italian with this course. Plus Italian slang, Italian news, radio and TV. ... Italian for beginners.

MON

ITALIAN FOR BILINGUALS

Mazzoni

FY L5 U5 P6 L6 U6

Invite Only



Learn Italian basics to boost your language skills!

MON

JAPANESE

Deighton

FY L5 U5 P6 L6 U6

Open to All



Study Japanese on our beginners course and explore this fascinating language, rich in culture, history and traditions. As you move through the year, you'll learn to talk about your daily activities and build conversational skills, useful for shopping, work or finding your way around a city.

MON/TUES/THURS

LE DROP-IN

Maguire, Nikiteas

FY L5 U5 P6 L6 U6

Open to All



This is an invitation only activity and students will be recommended by LE teachers and HMs.

TUES

MANDARIN A LEVEL

Yan

FY L5 U5 P6 L6 U6

Invite Only



Support for the Mandarin A Level

THURS

PRE-U MANDARIN HISTORY

Webster

FY L5 U5 P6 L6 U6

Invite Only



An activity dedicated to students studying Pre-U Mandarin. History component.

THURS

PRE-U MANDARIN LITERATURE

Savage

FY L5 U5 P6 L6 U6

Invite Only



An activity dedicated to students studying Pre-U Mandarin. Literature component.

MON

PRIMARY SCHOOL SCIENCE

Redstone

FY L5 U5 P6 L6 U6

Open to All



Join our volunteer team to deliver Science to local primary schools.

MON/TUES/THURS

PRIVATE STUDY (SIXTH FORM)

Various

FY L5 U5 P6 L6 U6

Open to All



Preparing for Exams? This is an opportunity to use a quiet time in order to get work done.

MON

PSYCH +

Stainsby

FY L5 U5 P6 L6 U6

Open to All



Psych+ is an opportunity for those that are interested to explore some of the topics that are not covered in the sixth form courses, including Aggression, Sports Psychology and Relationships. It is also an opportunity for sixth form students to share their passion for the subject with younger years.

TUES

RESEARCH CHEMISTRY

Finat-Duclos

FY L5 U5 P6 L6 U6

Invite Only



Interested in researching scientific topics or get support with A level Chemistry.

MON

RUSSIAN FOR BILINGUALS

Tchalaia

FY L5 U5 P6 L6 U6

Invite Only



Invitation only one-on-one Russian lessons for students studying A-Level/GCSE Russian.

MON

SCIENCE SOC

Clark

FY L5 U5 P6 L6 U6

Invite Only



Catch up and keep up! This club is open to all who are studying the BTEC Applied Science course. The coursework component can be very tricky to keep up with - here you will have extra time solely to focus on the coursework - with subject specialist help.

MON

SPANISH FOR JUNIORS

Walker

FY L5 U5 P6 L6 U6

Invite Only



An activity targeted at L5 and U5 students of GCSE Spanish who are aiming to achieve the very best grades! it will enhance their understanding of grammar and tenses, thereby improving their spoken and written flexibility and accuracy.

MON

SPANISH FOR NATIVE SPEAKERS

Lopez

FY L5 U5 P6 L6 U6

Invite Only



Invitation only one-on-one Spanish lessons for students studying A-Level Spanish.



**CREATIVE &
PERFORMING ARTS**

CREATIVE & PERFORMING ARTS

TUES

ANIMATION & MOTION GRAPHICS

Turner

FY L5 U5 P6 L6 U6

Open to All



With this beginners course on motion graphics, learn to animate entire worlds from illustrations. Useful for anyone interested in both graphic design & video production.

MON/TUES/THURS

ART - GENERAL ART

Excell, Turner

FY L5 U5 P6 L6 U6

Open to All



Art takes time and General Art is a chance to spend time working on paintings, drawings and photography. The full Art Department facilities are available to all and it is a great opportunity to work on your masterpiece!

TUES

ART - LIFE DRAWING

Parris, Smith

FY L5 U5 P6 L6 U6

Invite Only



The Art Department's leading programme on helping students with figure drawing confidence. Life drawing is fun, accessible and expressive.

MON

ART - PORTFOLIO PREPARATION

Harris

FY L5 U5 P6 L6 U6

Open to All



The Art Department aims to support students applying for Art College is this activity designed to give you support in your portfolio preparation.

TUES

ART - PRE 6TH

Roberts

FY L5 U5 P6 L6 U6

Invite Only



A specialised activity aimed at supporting Pre-6th students with their Art GCSE course.

MON

ART - SCHOLARS

Parris, Smith

FY L5 U5 P6 L6 U6

Invite Only



A bespoke activity for Art Scholar's at Bede's school.

TUES/THURS

DRAMA - ADAMS FAMILY SCHOOL PRODUCTION

Lewis, Dorudi

FY L5 U5 P6 L6 U6

Invite Only



We are excited to be staging The Addams Family at the Devonshire Park Theatre at the end of January and our activity time will be full of singing, dancing and acting rehearsals as we prepare for this event.

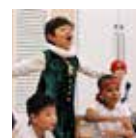
MON

DRAMA - PRIMARY SCHOOL VOLUNTEERING

Rennison

FY L5 U5 P6 L6 U6

Open to All



Volunteer to lead drama activities at local prep schools. Perfect for anyone with a love of drama.

TUES

FRENCH PLAY

Bonheur, Rohmer

FY L5 U5 P6 L6 U6

Invite Only



The celebrated language faculty & performing arts faculties join forces for their annual play. This year in French.

THURS

INVISIBLE STAGES

Rennison

FY L5 U5 P6 L6 U6

Open to All



Invisible Stages is performance project to create Site Specific Performances, turning the school in to a theatre of storytelling. Participants will also try their hand at writing Interactive Audio Plays which will be hidden about the school site for audience members to join in with.

CREATIVE & PERFORMING ARTS

MON

JAZZ CHOIR

Hilton

FY L5 U5 P6 L6 U6

Open to All



Jazz Choir is a space for singers of all abilities and experience who love music and want to develop their voice and repertoire in a fun and social setting.

TUES

LEGAT - CLASSICAL BALLET

Lowe

FY L5 U5 P6 L6 U6

Invite Only



Classical Ballet Technique and Solo Performance for pupils in Legat, Ms Lowe will be teaching you a solo dance based on a professional piece of repertoire.

THURS

LEGAT - JAZZ DANCE

Lowe

FY L5 U5 P6 L6 U6

Invite Only



Jazz Dance Technique and Solo Dance Performance for pupils in Legat, Ms Lowe will be teaching you a solo dance based on a professional piece of repertoire.

THURS

MASK & PROP ACTIVITY

Phelps

FY L5 U5 P6 L6 U6

Open to All



Making the Extraordinary. We'll take all your creative ideas from design & fabrication, right through to installation.

TUES

MUSIC - CONCERT BAND

Scamardella

FY L5 U5 P6 L6 U6

Open to All



This is the Bede, Ås equivalent of Orchestra and Jazz Band, and is an extravaganza afternoon for all instrumental students - come and join in!

MON/TUES

MUSIC - MUSICAL BAND

Aburn

FY L5 U5 P6 L6 U6

Open to All



This is the activity for the band accompanying the Addams Family show, in December 2021. Invitation only.

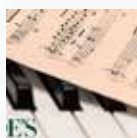
MON/THURS

MUSIC - MUSICAL REHEARSALS

Scamardella

FY L5 U5 P6 L6 U6

Open to All



Everyone's favourite kooky family are coming to Bede's School in this spectacular musical comedy. Rehearsals take place throughout the term ready for a performance in Devonshire Park Theatre in January 2022.

THURS

MUSIC - ROCK BAND

Williams

FY L5 U5 P6 L6 U6

Open to All



If you love to play rock music, then this is the activity for you. The Bede's rock band activity will be run by Andy Williams, our resident guitar aficionado.

THURS

MUSIC TECHNOLOGY

Hopkins

FY L5 U5 P6 L6 U6

Open to All



A musically creative space in which you can learn and use aspects of music technology to make the music that you want to make.

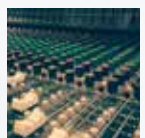
TUES

MUSIC TECHNOLOGY

Hopkins

FY L5 U5 P6 L6 U6

Open to All



A musically creative space in which you can learn and use aspects of music technology to make the music that you want to make.

THURS

PHOTOGRAPHY FOR ALL

Roberts, Smith

FY L5 U5 P6 L6 U6

Open to All



An activity dedicated to students who want to get involved with photography - from any age & ability.

AMBITIOUS
BEDE'S

Bede's Senior School
Upper Dicker
East Sussex, BN27 3QH

T 01323 843252
F 01323 442826
www.bedes.org