

A decorative graphic on the left side of the slide, consisting of a network of white lines and small circles on a blue gradient background, resembling a circuit board or a neural network.

JUNIOR COLLEGE & CAREER PLANNING GROUPS CLASS OF 2023

JANUARY 2022

GOALS FOR 11TH GRADE

- Research colleges and develop a preliminary list
- Research majors and career options
- Plan for standardized tests
- Visits colleges—virtually or in-person
- Learn about the various college applications
- Speak with teachers about letters of recommendations
- Complete student/parent brag sheets on Naviance

CELEBRITY COLLEGE GAME

Guess the celebrity and guess where they went
to college?





Oprah Winfrey
Tennessee State University



Steven Yeun
Kalamazoo College

Kumail Nanjiani
Grinnell



Steven Spielberg

California State University—34 Years later





Kourtney Kardashian
University of Arizona

Brad Pitt
University of Missouri





Tom Hanks

Chabot Community College
California State University-Sacramento

WHAT'S THE MORAL OF THE STORY?

- The “name” of the college you attend is not as important as what you do with your time at that college
- Find a college that you'll feel good at!
- A good fit college will allow you to discover who you are or help you pursue your passions

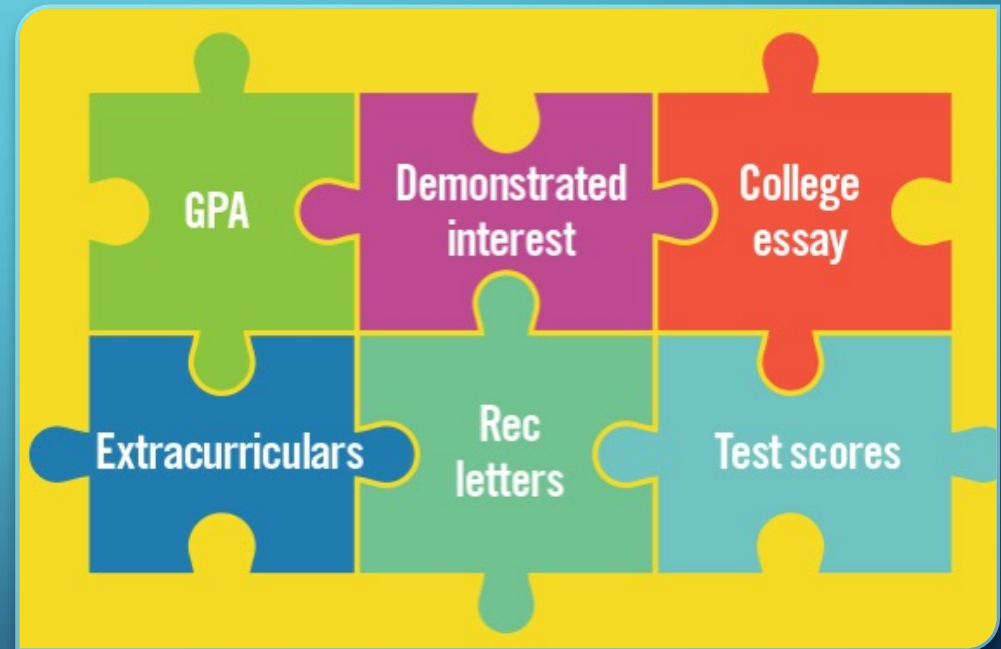
WHAT ARE THE POST SECONDARY OPTIONS BEYOND HIGH SCHOOL?

- 4-year college
- 2-year college
- Military
- Trade/Technical School
- Employment
- Gap Year



HOW IS A COLLEGE ADMISSION DECISION MADE?

- Holistic Review
 - Rigor of the transcript—Have you taken accelerated, AP classes?
 - Grades in classes
 - Qualitative parts of the application (sections the students writes)
 - Essays
 - Activities
 - Letters of Recommendation
 - Counselor
 - Teachers
 - Supplementals
 - Demonstrated Interest
 - Interviews



KNOWLEDGE CHECK #1



- What are two college and career planning goals?
- What are two non-college options after high school?
- Name one factor that colleges consider, besides your academic performance?

RESOURCES FOR BUILDING YOUR COLLEGE LIST

- Naviance
 - SuperMatch
 - Colleges I'm Thinking About
 - Colleges I'm Applying To
- Niche: <https://www.niche.com/colleges/search/your-best-fit-colleges/>
- College Board Big Future: <https://collegesearch.collegeboard.org/home>

FINDING A GOOD FIT

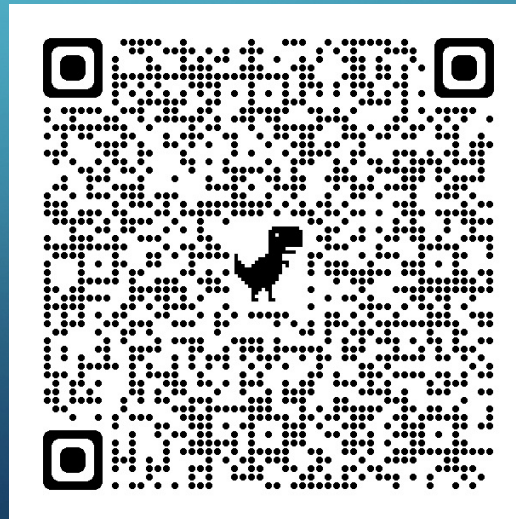
- Academic Fit
 - Determined by the college
 - Do your scores and grades fit the college's academic profile?
 - Does the college offer your major? Are there enough choices if you are undecided?
- Social Fit
 - Determined by the student
 - Does the college offer extracurricular experiences that interest you?
 - Does the social culture at the school fit your lifestyle?
- Financial Fit
 - Determined by the family
 - Is the college affordable, even without loans, grants or scholarships?
 - Is the college a good value? Is the Return on Investment (ROI) worth it?

BUILDING A BALANCED LIST

- Probable, Target, Reach
 - Probable: GPA & test scores are above the average admitted students; likely acceptance
 - Target: GPA & test scores are a close match to the average admitted student; 50/50 chance of acceptance
 - Reach: GPA & test scores are below the average admitted students
- Apply to an average of 8-10 colleges
 - 2-3 in probable
 - 3-4 in target
 - 2-3 in reach

NAVIANCE DEMONSTRATION

- SuperMatch Student Reference Guide:
- https://princetonk12org-my.sharepoint.com/:b:/g/personal/nipurnashah_princetonk12_org/EUifdzz7mXBAqHjvd1XLQEABPM0WuGFStdMRhIQhihB_UQ?e=L7VTjt



KNOWLEDGE CHECK #2



- Name 1 platform you can use to build a college list?
- A healthy college list has equal representation of what 3 categories?
- Aside from a good academic fit and financial fit, what other type of fit must you consider? Explain this fit and why it's important?

STANDARDIZED TESTING

- Review your PSAT scores
 - Khan Academy offers individualized practices for free
- Register for the SAT or ACT
 - www.collegeboard.org (SAT)
 - www.act.org (ACT)
- AP Testing (May 2022)
- Test Optional Colleges
 - www.fairtest.org



COLLEGE VISITS



- 3 excused days, must bring a note/email from college with proof of the visit to the attendance office
- Think about visiting colleges during breaks, or school holidays
- Register for on-campus events through the visits page on the admissions website
- Fall College visits on Naviance
- College Fair (Spring 2022—TBD)

ESSAYS

- Common Application Essay
 - 6 prompts, 1 that is an essay topic of choice
- Supplemental Essays
 - Varies by individual colleges, Ivy League colleges tend to have the most
- Advice on Essays
 - Answer the question/prompt that is being asked
 - Tell your story
 - May take multiple drafts before final produce
 - Share essays with a trusted adult (English teacher) for feedback



ACTIVITIES

- Community Service
- Employment
- Honors/Award
- Hobbies
- Talents
- Unique experiences
- Summer experiences
- Home responsibilities (caring for siblings, family members, help with family business)
- Don't undervalue anything you do. **EVERYTHING COUNTS!**



THE COLLEGE APPLICATION



- 3 platforms to apply to college on:
 - Common Application: <https://www.commonapp.org/>
 - Coalition Application: <https://www.coalitionforcollegeaccess.org/>
 - On the respective website of the college itself

ADMISSION PLANS

- **Regular Decision:** students submit an application by a specified date and receive a decision in a clearly stated period of time; NON-BINDING
- **Rolling Admission:** Institutions review applications as they are submitted and render admission decisions throughout the admission cycle; NON-BINDING
- **Early Action:** students apply early and receive a decision well in advance of the institution's regular response date; NON-BINDING
- **Early Decision:** students make a commitment to a first-choice institution where, if admitted they definitely will enroll and withdraw all other applications. The application deadline and decision deadline occur early; BINDING
- **Restrictive Early Action:** students apply to an institution of preference and receive a decision early. They may be restricted from applying ED or EA or REA to other institutions. If offered enrollment, they have until May 1 to confirm; NON-BINDING

KNOWLEDGE CHECK #3



- Visiting a campus in person is a great way to learn about a college. What are 2 other ways of connecting with colleges?
- Where do you go to register for standardized tests?
- Explain the importance of your college essay
- Explain the difference between Early Action vs. Early Decision?

SEARCHING FOR CAREER OPTIONS?

- Naviance-->Self-Discovery→Career Cluster Finder/Career Interest Profiler
- OneStop: <https://www.careeronestop.org/>
- College Board Big Future: <https://bigfuture.collegeboard.org/majors-careers>
- Some majors may have specific course requirements
 - Medicine
 - PT, OT
 - Nursing
- Specialized Programs
 - Architecture
 - Art
 - Music
 - Theater
- What if I'm undecided?

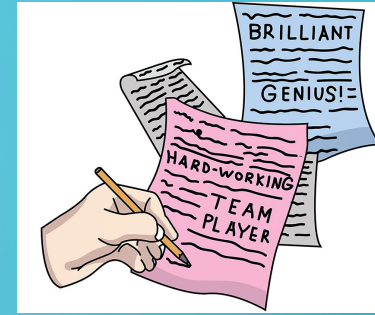


BRAG SHEETS

Create Your
Brag Sheet
Don't Be Humble!

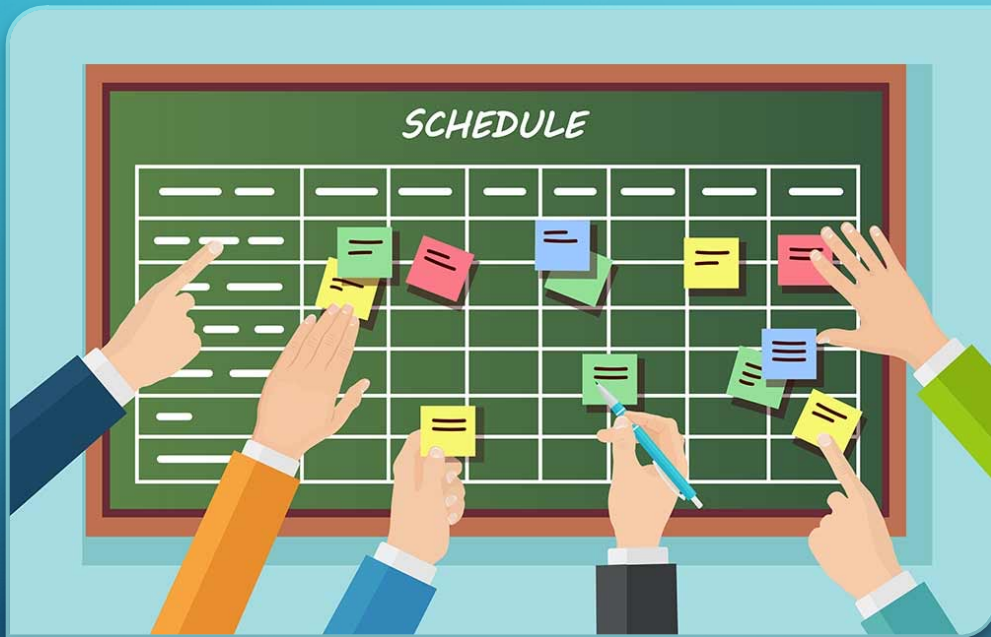
- Counselor Brag sheets
 - Parent
 - Student
 - Completed on Naviance
- Teacher Brag Sheet
 - Different than counselor Brag sheet
- Recommendation Waiver
 - Senior Waiver hard copy to be turned into the school counseling office

LETTERS OF RECOMMENDATION



- Plan to request TWO teacher letters of recommendation
 - Academic recommendations must come from core academic subjects
 - Math
 - Science
 - Social Studies
 - World Language
 - English
 - If applying into a special program (art, music), may need subject specific recommendation letter
- Check with colleges for specific requirements:
 - Does the teacher have to be from a specific discipline?
- You must make a verbal request first, starting in the spring time (March-April 2022)
 - Send the electronic request on Naviance
 - Ask the teacher what they might need from you in order to write your letter of recommendation
- Counselor's letter of recommendation is automatic, no need to request on Naviance

SENIOR YEAR SCHEDULING



- Scheduling will commence in February/March 2022
- Your counselor will meet with you after you enter your schedule.
- Senior year schedule is an important factor in admissions
- Consider rigor in senior year to show preparation for college course load

KNOWLEDGE CHECK #4



- How many teacher letters of recommendation should you request? When do you request them?
- What is required for your counselor to write your letter of recommendation?
- What should you consider when building your 12th grade schedule?

SHOWCASING YOUR TALENTS

- Athletes
 - Register with NCAA Eligibility Center
 - Work with your Coach
 - Fill out prospective athlete questionnaires
- Artists
 - Check portfolio requirements
 - Work with art teachers
- Musicians
 - Check portfolio/audition requirements
 - Work with band/orchestra teachers
- Thespians
 - Check portfolio/audition requirements



FINAL KNOWLEDGE CHECK



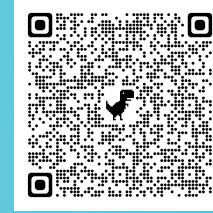
- What is the most interesting topic you learned about today?
- After today, which topics do you want to discuss more?

QUESTION ABOUT COLLEGE? POST IT TO PADLET!

- Click on this link for Padlet and post your questions about college
 - <https://padlet.com/nipurnashah/krdmc2yokq6ph6cc>

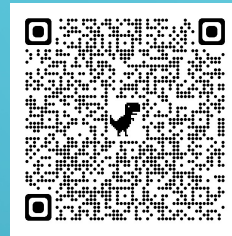


RESOURCES



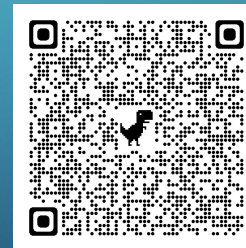
- Senior Waiver:

https://princeton12org-my.sharepoint.com/:b:/g/personal/nipurnashah_princeton12_org/ETpk1zuzRkJIIRGT6wR5zjEB46juu8MuYVVb5GRfiOuMew?e=onANAw



- Teacher Brag Sheet:

https://princeton12org-my.sharepoint.com/:b:/g/personal/nipurnashah_princeton12_org/EZOwNB0xIQdDiEgRHJnoG5gB0p0jqkV4WeD8Qt8C08Ac4A?e=f3ILGg



- Student/Parent Brag Sheet Packet:

https://princeton12org-my.sharepoint.com/:b:/g/personal/nipurnashah_princeton12_org/EaVHcSGbhTpDggbHMPxyHXAB5fEWBvZT2Q-X4TGZdLWO2A?e=0FAUOi

The background is a blue gradient. In the corners, there are white line-art illustrations of circuit boards or neural networks, with lines and small circles representing nodes.

THANK YOU!