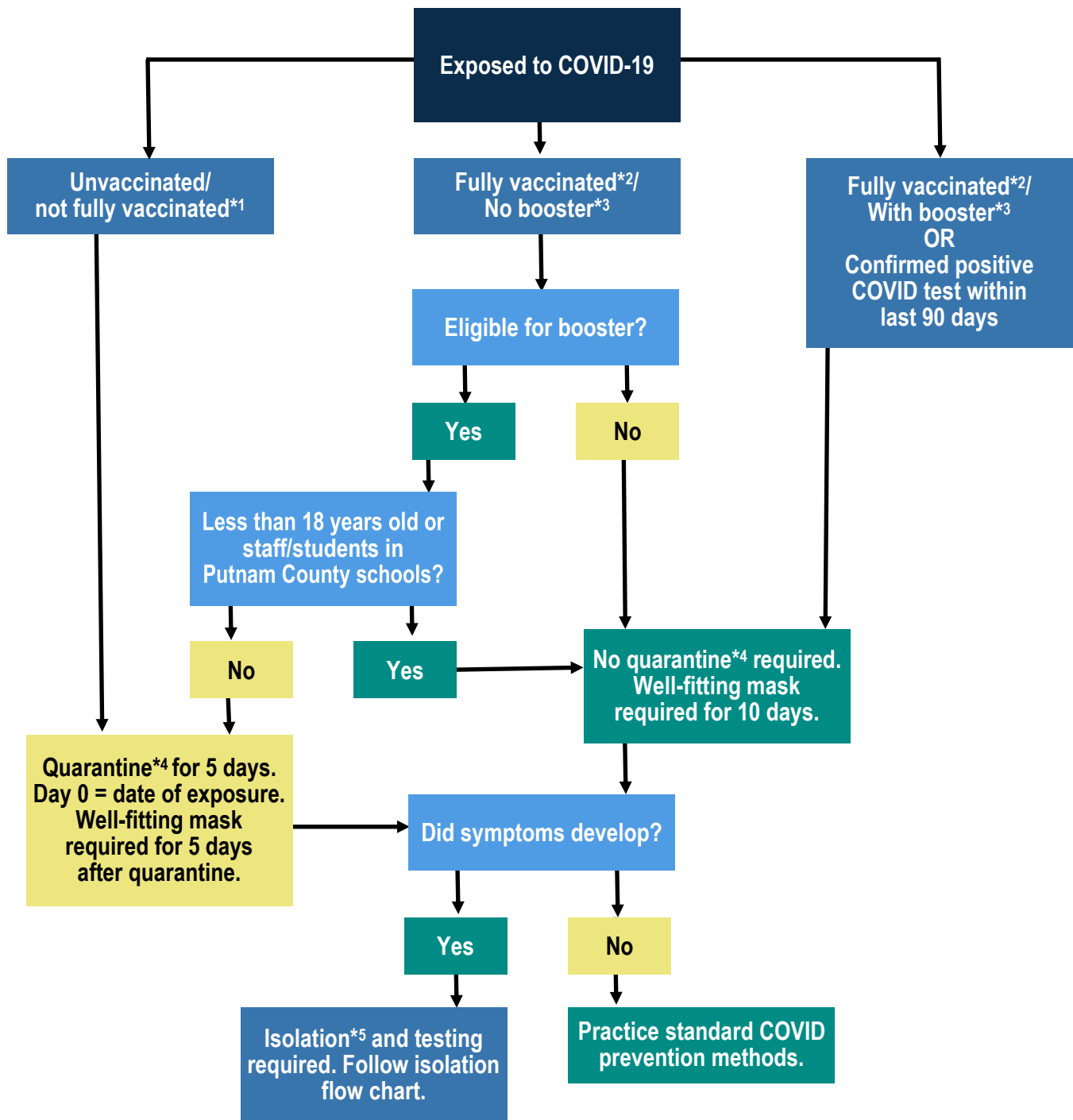


Exposure: Quarantine Flowchart



DEFINITIONS AS OF JANUARY 10 (subject to change)

***1Unvaccinated or not fully vaccinated**—has not completed a primary series, either 1 (J&J) or two (Pfizer, Moderna) primary shots and two weeks have passed. ***2Fully vaccinated**—has completed primary series, either 1 (J&J) or two (Pfizer, Moderna) primary shots and two weeks have passed. ***3Boosters**—Additional dose given multiple months after primary series. Boosters were initially given 6 months after primary series (1 or 2 vaccines), now given after 5 months. ***4Quarantine**—separation and movement restriction of people who were exposed to a contagious disease to protect others in case they become sick. ***5 Isolation**—separation of sick individuals from healthy to avoid disease spread.



Putnam County Department of Health

A PHAB - ACCREDITED HEALTH DEPARTMENT

sd/sh01132022