

HIGH SCHOOL PROFILE 2023-2024



**THE INTERNATIONAL SCHOOL
OF PORT OF SPAIN SINCE 1994**

Director

Helen Brocklesby
director@isps.edu.tt

Principal

Chad Schwaberow
principal@isps.edu.tt

Assistant Principal

Maeve O'Donovan
modonovan@isps.edu.tt

AP/Online Coordinator

Kendra Sylvester-Flores
ksylvester@isps.edu.tt

MYP Coordinator

Jamie Wheatley
jwheatley@isps.edu.tt

Counselor (Grade 8-12)

Louis Moore
lmoore@isps.edu.tt

Enrollment Manager

Daena De Souza Viscuña
dviscuna@isps.edu.tt

MAILING ADDRESS

1 International Drive,
Westmoorings,
Trinidad & Tobago,
West Indies

MISSION STATEMENT

ISPS is a vibrant learning community dedicated to developing passionate learners who strive for excellence and pursue their unique potential. We encourage resilience, innovation and collaboration, preparing students to act with confidence and integrity as caring global citizens.

ISPS CORE VISION

Inspiring thinkers and doers to shape a better world.

ISPS MOTTO

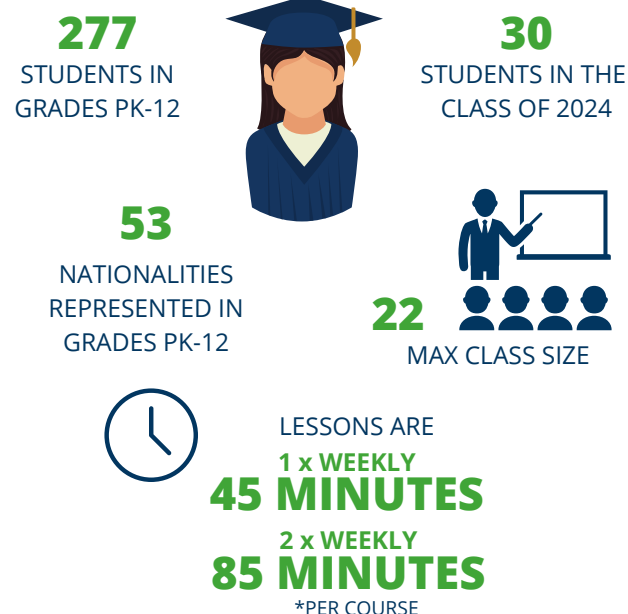
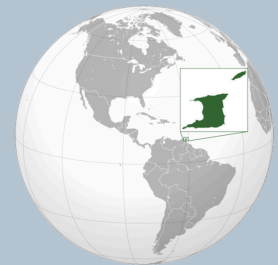
Difference Makers, Future Shapers.

OUR SCHOOL

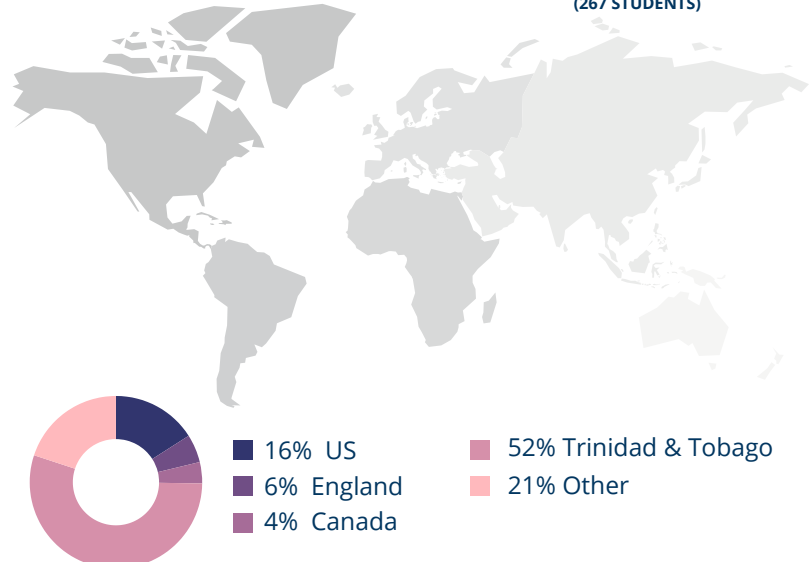
Established in 1994, the International School of Port of Spain (ISPS) is a private, co-educational day school based on a US curriculum model. It offers a college preparatory holistic education, in English, from Pre-Kindergarten through Grade 12. ISPS is accredited by NEASC, and its graduates earn a US High School Diploma.

Today the school has approximately 277 students representing over 53 different nationalities with approximately 52% of the students from Trinidad and Tobago. Our population includes 16% American, 4% from Latin America, and 16% from other countries, including the UK and Canada. The primary language of instruction at ISPS, in all grades, is English. Approximately 82% of our student population has identified English as either their primary or secondary language, with Spanish as the highest second language spoken.

TRINIDAD AND TOBAGO



PASSPORT HOLDERS 2022-2023 GRADES PK- 12 (267 STUDENTS)



ISPS CURRICULUM

High schoolers typically have seven academic courses in addition to Service Learning and Guidance within their schedules with educational and experiential trips being an important aspect of the curriculum.

Service Learning is now built into the academic day and all students actively participate in at least one of several service learning opportunities. Sporting events, cultural programs, student government, drama productions and opportunities to interact with other regional American/International schools, such as CAISSA, Model United Nations, and the Global Issues Network, are scheduled throughout the year.

In general, we strive for students to have an active, healthy, challenging, global and balanced lifestyle. Courses in the High School are college preparatory courses with Advanced Placement (AP) courses available. Students in grades 9 and 10 complete years 4 and 5 of the IB MYP program, including the Personal Project. Students in 11th and 12th grade engage in the AP Program and other college preparatory courses.

AP COURSE OFFERINGS

2-D Art Design	Psychology
English Lang. & Comp	Calculus AB
English Lit. & Comp	Biology
Comparative Govt. & Politics	Chemistry
Human Geography	Physics 1
World History	Physics 2
Macroeconomics	Research
Microeconomics	Seminar

CREDIT FOR AP COURSES

Most AP subjects are one credit courses. However, AP Biology, AP Calculus, AP Studio Art and AP Chemistry count for 1.5 credits.

GRADING SCALE

Grade	Scale	Points
A	95-100	4.0
A-	90-94	3.7
B+	87-89	3.3
B	84-86	3.0
B-	80-83	2.7
C+	77-79	2.3
C	74-76	2.0
C-	70-73	1.7
D+	67-69	1.3
D	64-66	1.0
D-	60-63	0.7
F	Below 60	0.0

- Courses and credits earned from other High Schools are not calculated in the cumulative GPA but are reported (and credits awarded) on the ISPS transcript.

GRADUATION CREDIT REQUIREMENTS

	Minimum
English	4
Mathematics	3
Social Studies	3
Science	3
Foreign Language	3
Total Core Academic	16
Physical Education	1.5
Electives/Other Academic	8
Total	26

GRADUATION REQUIREMENTS

In order to obtain a High School Diploma from ISPS, students must earn a minimum of 26 credits while enrolled in grades 9-12.

Of these, 16 must be from the core academic areas of English, Math, Science, Social Science and Modern Languages according to the table below. In addition to these, students must complete 1.5 credits in PE and at least 1 in the Arts. Electives and/or additional academic credits make up the required 26.

Students are enrolled into AP courses based on academic performance, recommendation from teachers and overall rigor of student schedules.

Course Offerings 2023-2024

It should be understood that the viability of courses will be dependent upon student interest, available staffing, and timetable limitations.

AP Capstone

AP Seminar
AP Research

Arts

Visual Art 1
Music 1
Design 1
Drama 1
Visual Art 2
Music 2
Open Studio
Art & Design
AP Studio Art

English

English 9
English 10
English 11
AP English Lang. & Comp.
Creative Writing
AP English Lit. & Comp.

Mathematics

Integrated Math 9 S
Integrated Math 9 E
Integrated Math 10 S
Integrated Math 10 E
Integrated Math 11
Precalculus
Business Math
AP Calculus AB

Physical & Health Education (PHE)

PHE 9
Advanced PHE

Science

Biology 1
Physics 1
Biology 2
Chemistry
Environmental Science
AP Biology
AP Chemistry
AP Physics 1
AP Physics

Social Science

Individuals & Societies 9
Individuals & Societies 10
Contemporary Issues
AP Human Geography
AP Psychology
AP World History
AP Macroeconomics
AP Microeconomics

Spanish

Spanish Emergent C
Spanish Emergent C+
Spanish Capable
Pre-AP Spanish
AP Spanish Lang. & Culture

Notes:

In addition to courses offered face-to-face, students have opportunities to participate in Wisconsin Virtual School (WVS) courses online.

CLASS OF 2023 GPA STATISTICS

3.75 - 4.00	16 students	
3.50 - 3.74	8 students	
3.25 - 3.49	7 students	
3.00 - 3.24	2 students	
2.75 - 2.99	1 students	
2.50 - 2.74	2 students	
below 2.5	1 students	
New, no GPA	0 students	

These statistics are based on a weighted cumulative GPA and only ISPS grades are included. ISPS does not rank students.

2023 ADVANCED PLACEMENT (AP) SCORES

	ISPS ▼	WORLD ▼
2-D Art & Design [6]	4.00	3.36
Art History [13]	3.62	3.04
Biology	3.42	3.04
Calculus AB [15]	2.60	2.99
Chemistry [8]	3.25	3.26
Comparative Govt. & Politics [15]	3.40	3.14
English Lang. & Comp. [7]	3.43	2.82
English Lit. & Comp. [36]	3.50	3.26
Human Geography [14]	4.36	2.75
Macroeconomics [8]	3.00	3.08
Microeconomics [3]	3.33	3.25
Physics 1 [10]	2.50	2.55
Physics 2 [4]	2.50	3.15
Psychology [17]	4.06	2.89
Research [11]	3.64	3.34
Seminar [9]	3.22	3.24
Spanish Lang. & Culture [7]	3.14	3.60

GRADING SYSTEM FOR 11 AND GRADE POINT AVERAGES

The school year consists of 183 instructional days divided into semesters and quarters. Formal grade reports are issued at the end of each quarter. Exams are given at the end of each semester and count toward the semester grade.

Only final grades are entered on students' cumulative transcripts. GPA's are computed using the following scale for all ISPS courses. AP courses are weighted.

STANDARDIZED TESTING

In the High School, the following standardized tests are typically available: SAT, SAT Subject Tests, ACT and AP Exams. Students in Grades 9-10 take the MAP test twice annually. Students in grades 9-11 are required to do the PSATs. It is recommended that juniors do the SAT at least once before their Senior year. Students are encouraged to do SAT Subject Tests as they complete respective AP courses. AP exams are administered in May of every year in accordance with the College Board's policies and procedures.

GRADING SYSTEM FOR GRADES 9 & 10

Progress in all MYP subjects can be monitored through PowerSchool Unified Classroom. Formal reports are issued at the end of each quarter and semester. The MYP assessment criteria offers a rigorous evaluation of a student's academic achievement, while ISPS also reports on students' overall approach to learning (ATLs).

SAT Average Scores

Class of	ERW	Math
2019	605	597
2020	607	594
2021	626	640
2022	551	565
2023	590	580

← • Number in brackets indicates the number of ISPS students who sat the exam.

AP RESULTS, 2019 - 2023

Subject	2019	2020	2021	2022	2023	Global Average (2023)
2-D Art & Design	3.80	4.30	3.30	3.90	4.0	3.36
Art History	-	-	3.00	-	3.62	3.04
Biology	3.50	3.40	3.50	-	3.42	3.04
Calculus AB	3.20	3.70	3.40	2.40	2.60	2.99
Calculus AB Subs	4.00	-	3.00	-	-	-
Calculus BC	3.70	4.50	2.90	-	-	-
Chemistry	2.00	2.60	3.30	2.80	3.25	3.26
Comp. Govt & Policies	-	4.00	3.40	4.20	3.40	3.14
Eng Lang & Comp	3.10	3.10	3.10	2.90	3.43	2.82
Eng Lit & Comp	4.00	2.50	2.80	4.50	3.50	3.26
Envi. Science	-	5.00	-	-	-	-
European History	3.30	-	-	-	-	-
Human Geography	4.50	4.00	4.40	4.00	4.36	2.75
Macroeconomics	2.70	3.10	2.60	2.40	3.00	3.08
Microeconomics	3.30	2.80	3.10	1.80	3.33	3.25
Physics 1	2.00	4.00	2.20	2.50	2.50	2.55
Physics 2	5.00	-	-	2.00	2.50	3.15
Psychology	2.70	3.50	2.80	3.50	4.06	2.89
Research	-	-	4.00	3.30	3.40	3.34
Seminar	2.70	2.80	3.33	3.38	3.22	3.24
Spanish Lang. & Culture	4.70	3.90	4.60	4.00	3.14	3.60
World History Modern	-	3.10	-	3.70	-	-
Total No. of Exams	175	175	166	145	195	-
Total Students	90	90	63	85	66	-

UNITED STATES

American University
Brown University
Boston University
Curry College
Duke University
Embry-Riddle Aeronautical University
Emory University
Fordham University
George Washington University
Georgia Institute of Technology
Hofstra University
Illinois Institute of Technology
International Culinary Center
Lawrence Technological University
Long Island University, Post
Loyola Marymount University
Lynn University
Mercer University
Northeastern University
Northwestern University
Pace University, New York City
Penn State University
Saint Joseph's University
Santa Clara University
Santa Fe College
Savannah College of Art and Design
St Leo University
St. Edward's University
St. John's Uni. - Queens Campus
Stanford University
Syracuse University
Temple University
Texas Tech University
The New School USA
University of Arkansas
University of California, Santa Barbara

University of California, Berkeley
University of Central Florida
University of Colorado at Boulder
University of Florida
University of Houston
University of Louisiana
University of Miami
University of New Mexico
University of Pennsylvania
University of San Francisco
University of South Florida, Tampa
University of Tampa
Virginia Tech

CANADA

Brock University
King's University College, Western University
McGill University
Ryerson University
S. Alberta Inst. of Technol.
Seneca College
Sheridan College
University of Alberta
University of British Columbia
University of Guelph
University of Toronto
University of Victoria
University of Waterloo
Western University

UNITED KINGDOM

King's College London
Manchester Metropolitan University
Oxford Brookes University
Royal Coll. of Surgeons in Ireland, Ireland
Royal Holloway, University of London
Royal Veterinary College
University College Cork
University of Aberdeen
University of Bristol
University of Edinburgh

University of Exeter
University of Lancaster
University of Leeds
University of Reading
University of Surrey

EUROPE

BES La Salle
La Univ. politécnica de Madrid
Universidad de Carlos de II
Universidad de Navarra

OTHER

Universidad de Los Andes
Universidad Marista de Merida
University of the West Indies

KEY

Listed = Acceptances

Bold Type = Matriculation

() - Number of students Matriculated

ACCREDITATION AND MEMBERSHIPS

Trinidad & Tobago Ministry of Education

IBO International Baccalaureate Organization

NEASC The New England Association of Schools and Colleges (NEASC) is an independent, voluntary, nonprofit membership organization which partners with over 1500 public, independent, and international schools in the US and worldwide to assess, support, and promote high quality education for all students through accreditation, professional assistance, and pursuit of best practices.