

COVID-19 Flowchart for Parents

Updated 1/12/22

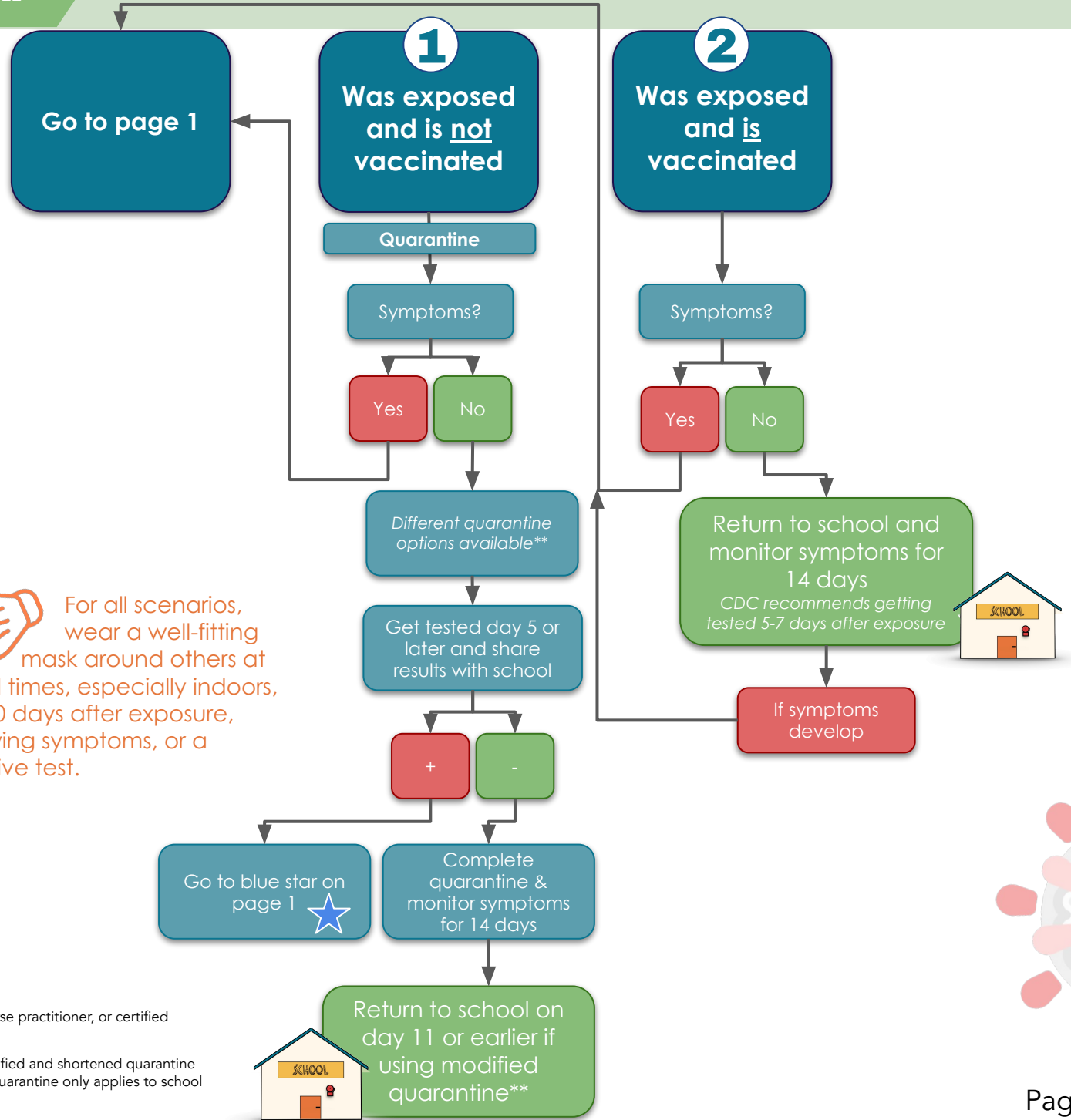
MY CHILD...

These protocols are based on guidance provided by California Department of Public Health (CDPH)

Begin with scenario 1 or 2 and follow the arrows, answering the questions for your child's situation.



For all scenarios, wear a well-fitting mask around others at all times, especially indoors, for 10 days after exposure, showing symptoms, or a positive test.



*Healthcare Provider: doctor, nurse practitioner, or certified physician assistant

**Talk to your school about modified and shortened quarantine options. Please note: modified quarantine only applies to school and not extracurriculars or sports

