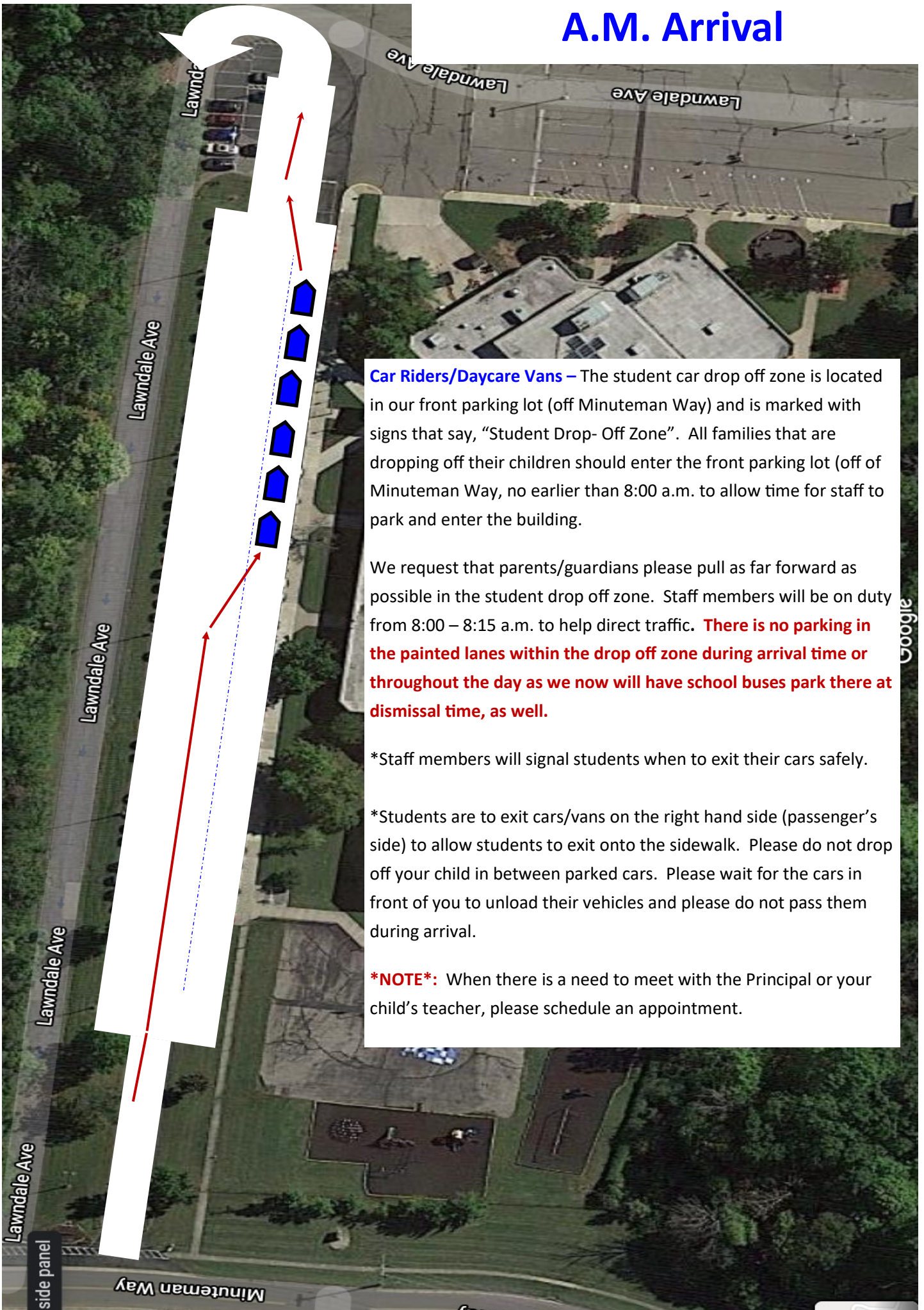


A.M. Arrival



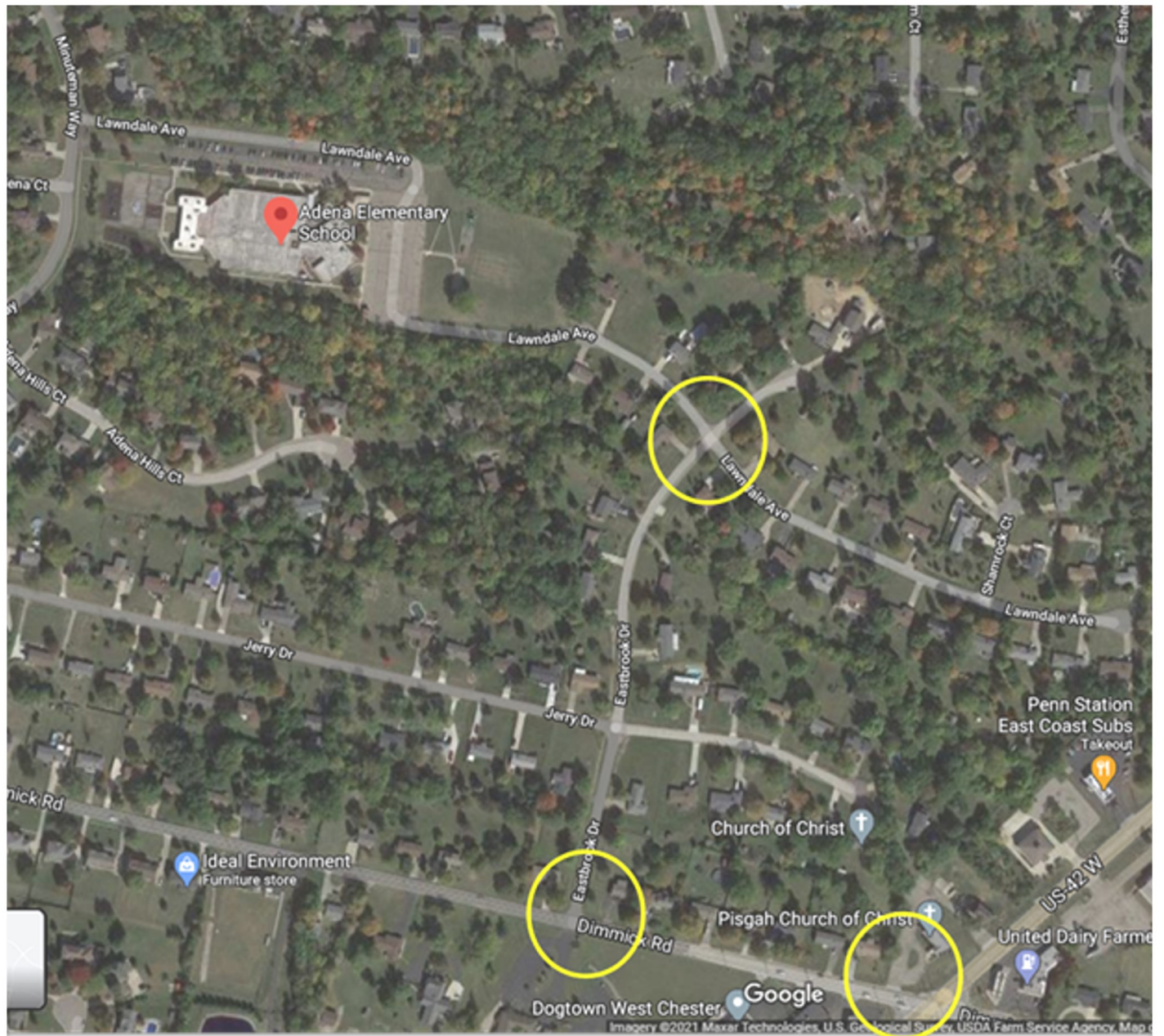
Car Riders/Daycare Vans – The student car drop off zone is located in our front parking lot (off Minuteman Way) and is marked with signs that say, “Student Drop- Off Zone”. All families that are dropping off their children should enter the front parking lot (off of Minuteman Way, no earlier than 8:00 a.m. to allow time for staff to park and enter the building.

We request that parents/guardians please pull as far forward as possible in the student drop off zone. Staff members will be on duty from 8:00 – 8:15 a.m. to help direct traffic. **There is no parking in the painted lanes within the drop off zone during arrival time or throughout the day as we now will have school buses park there at dismissal time, as well.**

*Staff members will signal students when to exit their cars safely.

*Students are to exit cars/vans on the right hand side (passenger’s side) to allow students to exit onto the sidewalk. Please do not drop off your child in between parked cars. Please wait for the cars in front of you to unload their vehicles and please do not pass them during arrival.

***NOTE*:** When there is a need to meet with the Principal or your child’s teacher, please schedule an appointment.



Dimmick & Hwy 42
(Reading Road)