

Waxaad heshay kombuyuutarkaagii (chromebook/iPad) oo ay la socoto heshiiska masuuliyada isticmaalkiisa, taas oo adiga iyo waalidkaa/Masuulkaaga aad saxeexdeen. Kombuyuutarkan (chromebook/iPad) adiga ayaa lagu xilsaaray, adiga ayaana masuul ka ah ilaalintiisa. Fadlan akhri macluumaadka soo socda si aad u fahamto masuuliyada kaa saaran iyo isticmaalkiisaba.

- Rakibaada fidinta waa la curyaaminayaa.
- Dugsiyada Highline ayaa ilaalinaya gelitaanka.

Sharciiga, Nidaamka isticmaalka qalabka teknoolojiyada ee Degmada

Sharciiga 2026 – ISTICMAALKA QALABKA TEKNOLOOJIYADA LA QAATO EE DEGMADU LEEDAHAY IYO MASUULIYADA ADEEGSIGA ARDAYGA

Nidaamka 2026 - STICMAALKA QALABKA TEKNOLOOJIYADA LA QAATO EE DEGMADU LEEDAHAY IYO MASUULIYADA ADEEGSIGA ARDAYGA

Foom2026 – HESHIISKA SANADLAHA AH EE ISTICMAALKA TEKNOLOOJIYADA DEGMADU LEEDAHAY

Book-gacmeed 2026 – BARNAAMIJKA AALADA TELEFOONKA EE DEGMADU LEEDAHAY

Sharciyadan waxaa laga heli karaa Websaydhka HPS, waaxda teknoolojiyada boga cinwaankiisu yahay isticmaalka masuuliyada (<https://www.highlineschools.org/departments/technology-services>)

NIDAAMKA LA RAACAYO HADII UU LUMO QALABK ARDAYGU

Dugsiyada Highline waxay u dhaqmaan sidii ganacsi caymis leh. Shayga la xado ama la waayo, kooxda maaraynta khataraha ayaa go'aamiya in shaygaasi caymis lahaa iyo in kale, hadii shaygaasi aanu caymis lahayn waxaa laga yaabaa in aad adigu masuul ka noqon doonto. Fadlan eeg macluumaadka hoos ku qoran ee qeexaya qalabka ardaygu u qaato guriga iyo kuwa uu ku isticmaalo Dugsiga, waxaa jira waqtiyo la soo sheego qalabka la waayo iyo masuuliyiin lala socod siyo.

- Xafiiska Dugsiga ku soo ogaysii mudo 24 saacadood gudahood qalabka lawaayay. Tani waa shuruud khusaysa teknoolojiyada la xado ama luma ee degmao dugsiyeedka oo dhan. Waxaa waajib ah in ardaygu sheego wixii macluumaad ah ee uu ka xasuusto shayga la waayay(sida noociisa iyo numbarka shayga).
- Shayga la xaday ka soo diiwaan geli waaxda booliiska mudo 24 saacadood gudahood. Waa in la buuxiyo foomka booliiska marka la ogaado in shayga la xaday iyadoo la eegayo sharciyada degmadaas u yaala. Fadlan u soo gudbi dugsiga numbarka dacwada ee boolisku ku siiyay.

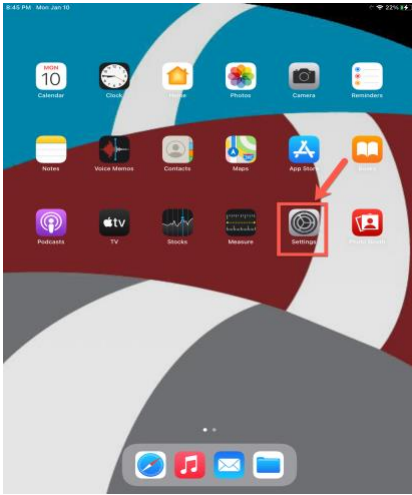
* Fadlan waxaad ogaataa, hadii shay la xado/la waayo la soo ogaysiin waayo dugsiga mudo 2 cisho gudahood, shayqaa waxaa bedelkiisa bixin doona ardayg.

HEERKA KAALMADA DUGSIGAAGA

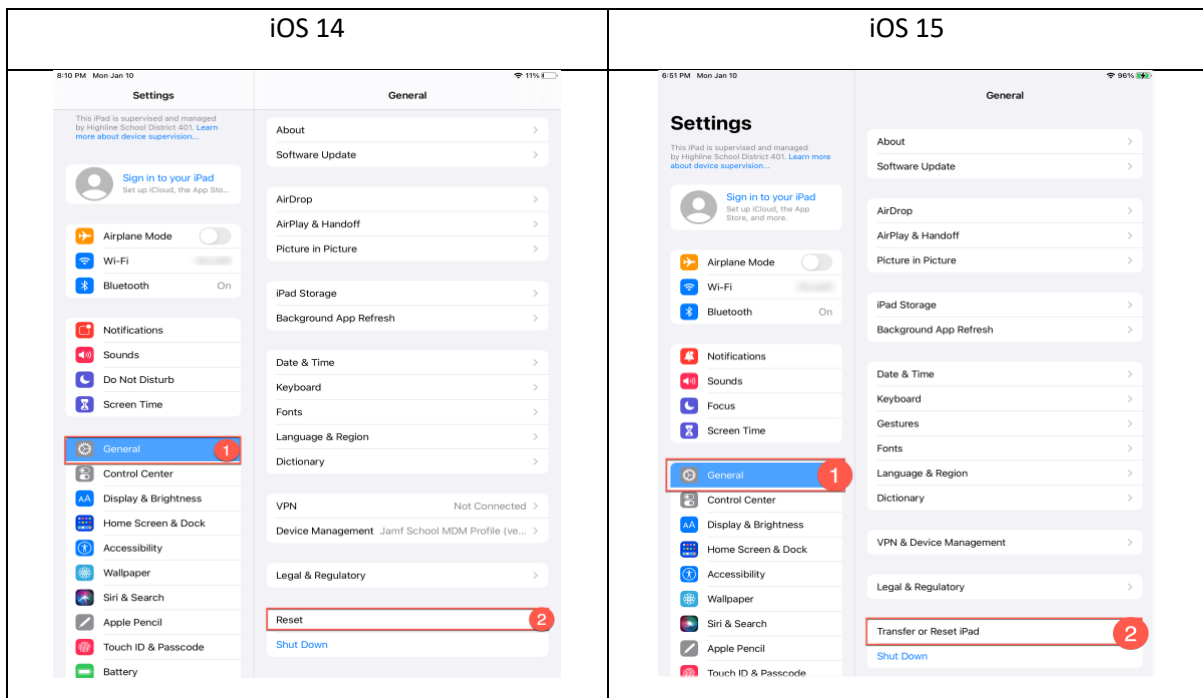
Dugsi kasta waxaa uu leeyahay farsamayaan u gaar ah. La xiriir xafiiska dugsiga si aad u hesho kaalmada farsamayaqaanka. Hadaad u baahato in baasweedka?password wax laga bedelo, fadlan la xiriir qof kamid ah shaqaalaha dugsiga.

Dib ugu celi iOS 14/15 una deji goobaha warshada

1. Ka hel app dejinta shaashadda guriga iPad-ka

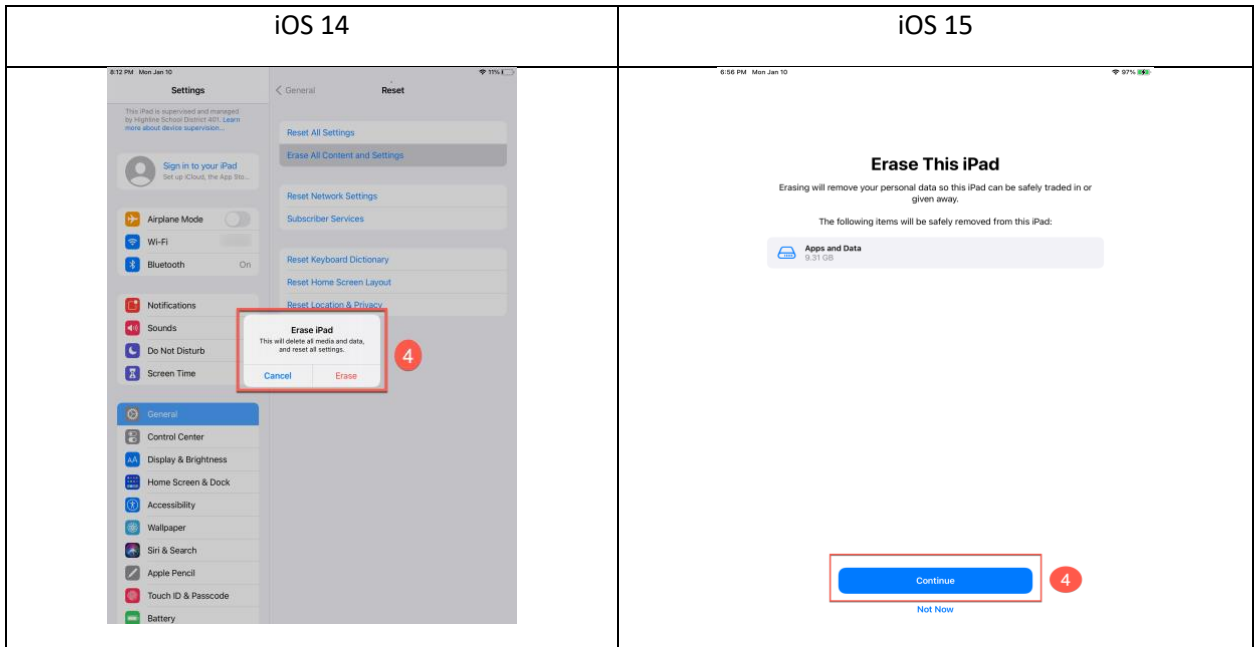


2. Waxay kuxirantahay nooca iOS ee lagu rakibay iPad-ka. Hel menu-ka Guud ka dibna hel badhanka Dib-u-dejinta (iOS 14) ama Transfer ama Reset iPad (iOS 15)

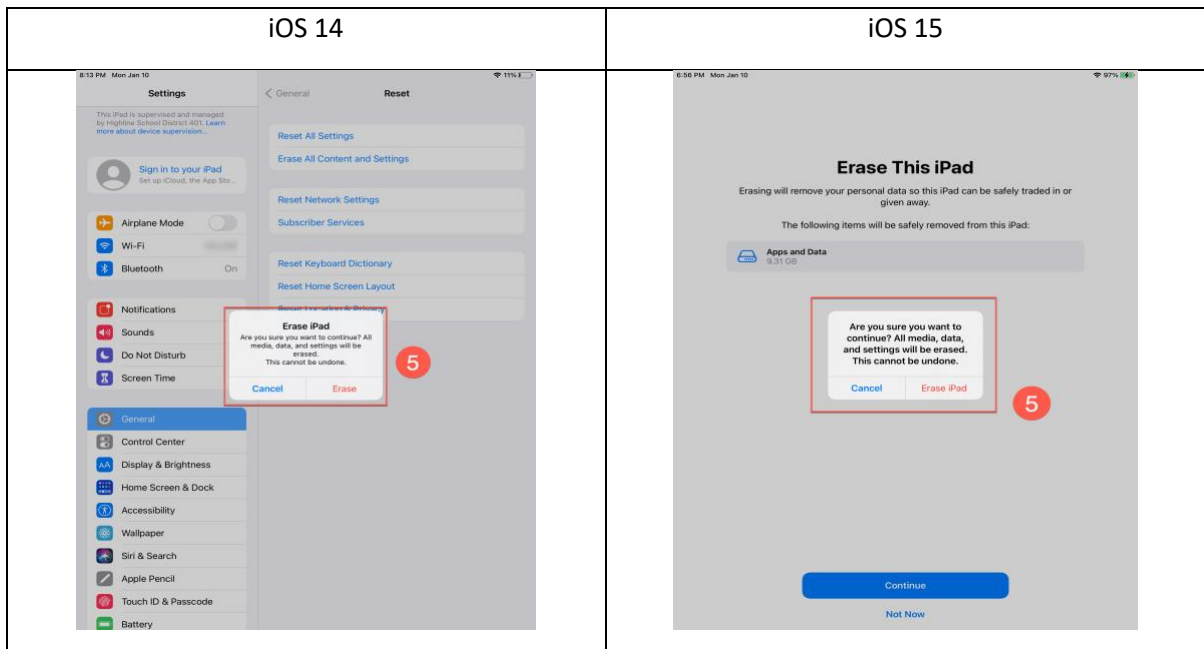


3. Dooro Masixi dhammaan xiriir iyo dejinta (iOS 14) ama Masixi dhammaan xiriir iyo dejinta (iOS 15).

4. Dooro tirtir (iOS 14) ama sii wad (iOS 15)

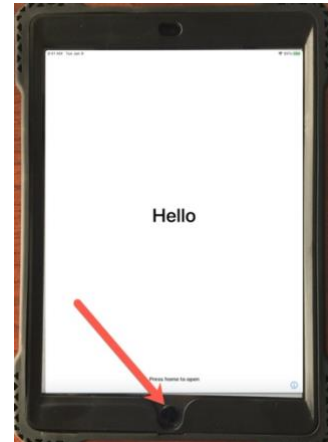


5. Dooro Tirtir (iOS 14) ama tirtir iPad (iOS 15)



Sida looga shaqaysiiyo iPadka Degmadu bixisho

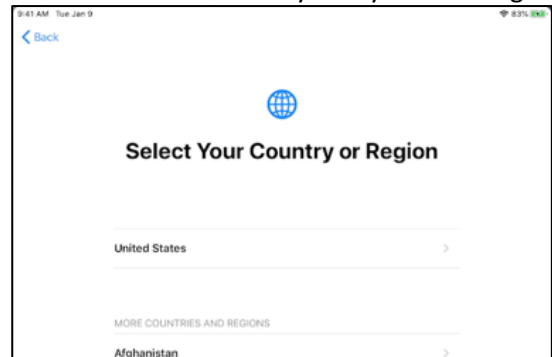
1. iPadka shid, adiga oo gujinaya badhanka xaga sare ee midigta ku yaal (kasoo horjeedka samaacadaha dhegaha).
2. Guji badhanka guriga, ee ku yaala halka shaashada hoosteeda. Marka shaashadu shidanto, guji mar labaad.



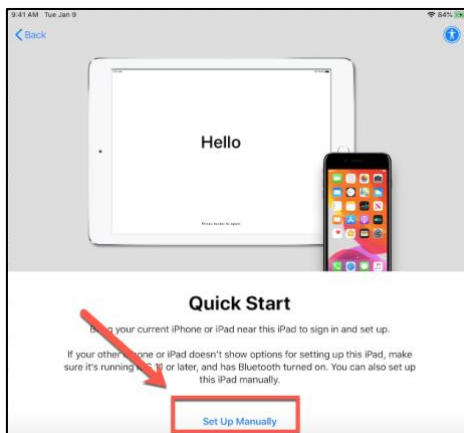
3. Dooro luuqada iPadkaagu ku jiro.



4. Dooro United States in ay tahay wadankaaga.



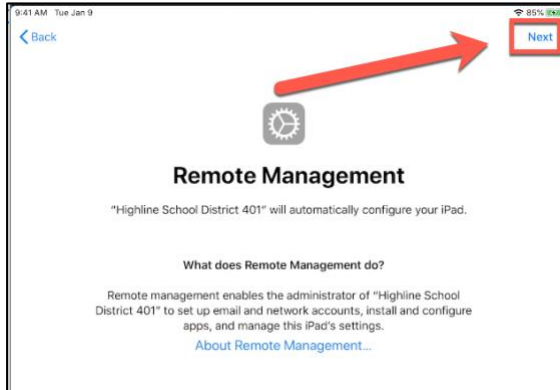
5. Shaashada bilowga deg dega ah dooro ka ugu hooseeya **“Set up Manually”**.



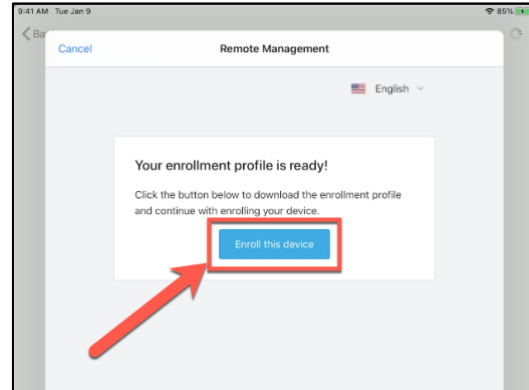
6. Dooro Wi-Fi guriga ama dugsiga. Haduu W-Fi u baahanyahay password, sanduuqa soo baxa geli Wi-Fi password.



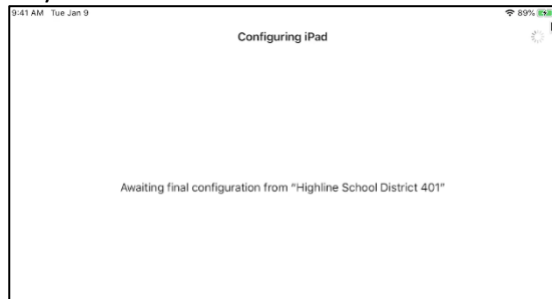
7. Guji ka xiga.



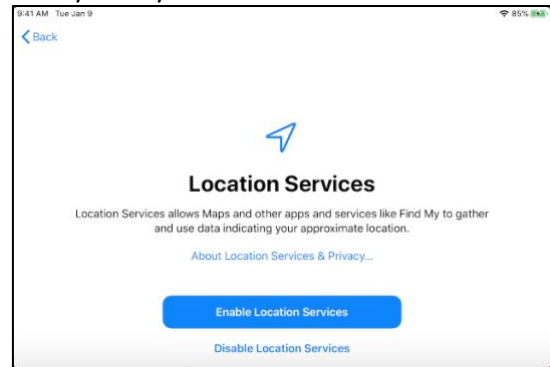
8. Guji "Enroll This Device".



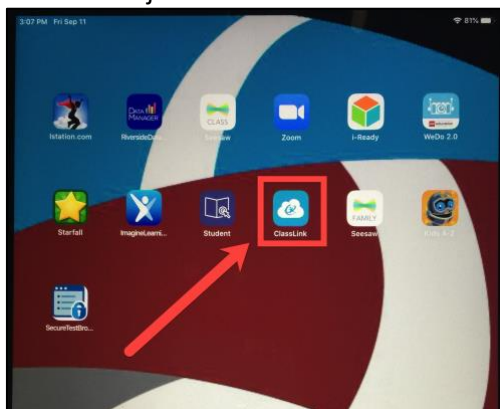
9. Waxay ku qaadanaysaa iPadka qadar miriro ah inay shaashada ka soo baxdo.



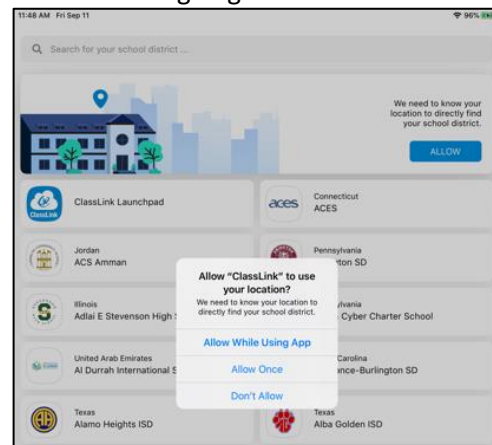
10. Guji Enable Location Services. Tani looma baahna, waxaan ku talinaynaa inaad samayso, waxay sahlayaa isticmaalka



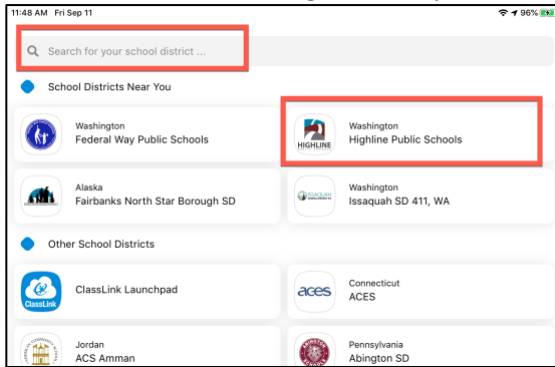
11. Marka iPadka habayntiisu dhamaato waxaa mar walba loo noqonayaa shaashada. Barnaamijada degmadu waxay ku jiraan classlink. Guji classLink si aad u bilowdo.



12. Marka ugu horeysa ee bilowdo ClassLink waxaa laga yaabaa inaad doorato degmada, Ogolaanshaha goobtu wuxuu sahlayaa baadhitaan deg deg ah



13. Haddii goobtu soo saari waydo Highline Public Schools, waxaad kaloo ka baadhi kartaa badhanka baadhista xaga sare ku yaal



14. Haddii aadan haysan macluumaadka gelitaanka ardaygaaga, fadlan la xiriir macalinkooda.

ILAHA TEKNOLOOJIYADA EE QOYSASKA

1. Waxaad Tagtaa: <https://www.highlineschools.org/>
2. Guji Tech Support icon
3. Boga kaalmada Teknolojiyadu wuxuu siinayaa qoysaska macluumaad ku saabsan ClassLink, Digital Tools, isticmaalida Chromebook & sida ciladaha looga saaro iyo waxyalo kale oo badan!



Tech Support



To access the family technology support page:

<https://www.highlineschools.org/departments/technology-services/technology-support>