

COMMITTEE MEMBERS PRESENT

Christopher Browe, Matthew Giglietti, Andrea Hubbard, Sharon Huxley,
Joseph Nuzzo

COMMITTEE MEMBERS ABSENT

Dr. K. Sudhir

STAFF MEMBERS PRESENT

Dr. Jennifer Byars, Theresa Lumas, Kathy Kovalik, Dr. Marie McPadden

BOE MEMBERS PRESENT

John Belfonti

1. Call to Order

Chairperson Browe called the meeting to order at 5:32 p.m.

2. Discussion and Possible Action on Minutes

a. Finance Committee Meeting – November 8, 2021

MOTION by Matthew Giglietti, SECOND by Sharon Huxley, to approve minutes as submitted

VOTES IN FAVOR, 5 (unanimous)

MOTION CARRIED

3. Public Comment

None

4. Update of 2022-23 Budget Process

a. Initial Budget Data and Revisions to Date

b. Important Budget Meeting Dates

5. Discussion and Possible Action on Selecting Architect

a. Lecture Hall – ARHS

b. Outdoor Classroom Structures

MOTION by Matthew Giglietti, SECOND by Joseph Nuzzo, to recommend the Amity Board of Education award the architectural services project for the lecture hall, presentation room, and outdoor structures to Northeast Collaborative Architects of Middletown for \$10,000 and \$4,500 respectively, totaling \$14,500 and funded as outlined below:

The lecture hall has a basic estimate in the 5-year Capital Plan for \$110,000. Once the architectural services are complete the project will be bid and a better estimate will be available. There is \$507,844 undesignated from FY21 appropriation and \$332,587 from previous projects for a total of \$840,431 to support this request. The outdoor classroom structures have a base estimate of \$144,000 in the ARP-ESSER III budget. Once the architectural services are complete the project will be bid and a better estimate will be available.

VOTES IN FAVOR, 5 (unanimous)

MOTION CARRIED

6. Discussion of Monthly Financial Statements

7. Director of Finance and Administration Approved Transfers Under \$3,000

8. Discussion and Possible Action on Transfers over \$3,000

MOTION by Joseph Nuzzo, SECOND by Sharon Huxley, to recommend the Amity Board of Education approve the following:

- Additional engineering costs for the HVAC project at Amity Regional High School*
- A transfer from remaining funds in the paving project account to the HVAC Project Account for engineering costs*

<u>ACCOUNT NUMBER</u>	<u>ACCOUNT NAME</u>	<u>FROM</u>	<u>TO</u>
17-00-15-0050-5720	Paving	\$10,000	
17-00-15-0048-5715	HVAC Projects		\$10,000

- Additional concrete sections for the Athletic project at Amity Regional High School*
- A transfer from remaining funds in the paving project account to the Athletic project Account for concrete installation costs*

<u>ACCOUNT NUMBER</u>	<u>ACCOUNT NAME</u>	<u>FROM</u>	<u>TO</u>
17-00-15-0050-5720	Paving	\$2,500	
17-00-15-0047-5715	Athletic Projects		\$2,500

VOTES IN FAVOR, 5 (unanimous)

MOTION CARRIED

9. Other

a. Bond Projects YTD Budget Report

b. Audit Update

10. Adjourn

MOTION by Matthew Giglietti, SECOND by Joseph Nuzzo, to adjourn meeting
VOTES IN FAVOR, 5 (unanimous)
MOTION CARRIED

Respectfully submitted,
Pamela Pera
Recording Secretary



NORTHEAST
COLLABORATIVE
ARCHITECTS

500 Plaza Middlesex
Middletown, CT 06457
www.ncarchitects.com
tel: 860.344.9332
fax: 860.347.4075

December 3, 2021

Mr. Stephen Martoni
Director of Facilities
Amity - Regional School District No. 5
25 Newton Road
Woodbridge, CT 06525

RE: Feasibility Study
Amity Regional High School – Multi-Purpose Room Improvement
Programming and Conceptual Design Services

Dear Mr. Martoni:

Thank you for requesting our proposal for design study services for the Feasibility Study at the Amity High School – Multi-Purpose Room Improvement Programming and Conceptual Design Services. This Letter of Agreement form is based on our understanding of the scope of work and presents our corresponding fee structure.

STUDY UNDERSTANDING

- Review existing multi-purpose room at the Amity Regional High School and directly adjacent former projection and current video studio rooms.
- Consider current use and potential reuses to address to school district's needs.
- We understand the school district's needs include a functional, modern space for larger and/or multiple-class presentations, by faculty, students and visitors, as well as a place for faculty and/or staff meetings, and Regional School District No. 5 Board of Education (and/or sub-committee) meetings.
- Space programming for a functional modern, multi-media space.
- Conceptual design options for enhanced solutions based on the programming, structural confines, code compliance, with state-of-the-art multi-media technology and room acoustics, with MEP/FP engineering considerations to support systems and aesthetic improvements.

ARCHITECT'S RESPONSIBILITIES

- Perform existing conditions assessment of the spaces indicated above (includes diagrammatic plan, space utilization, materials, acoustics, general code and ADA compliance).
- Meet with Amity Regional School District's appointed stakeholder group to review the conditions assessment and space program requirements.
- Upon your review and approval of the conditions assessment and the space program, we will develop conceptual design study options (up to 3) for the transformation of the space.
- We will meet with the stakeholder group to review a draft of the



NORTHEAST
COLLABORATIVE
ARCHITECTS

conceptual design options.

- Upon review and approval, we will proceed with the finalization of the conceptual design option(s). We include preliminary services to consider room acoustics, A/V systems, electrical and possible mechanical support of the renovations, and rough order of magnitude cost estimating for comparative analysis of design solutions.
- Submit a final document including the analysis, space program, and final conceptual design(s). Final conceptual designs for each option will be in the form of a diagrammatic floor plan, a brief descriptive narrative, a basic 3-dimensional view showing proposed room configuration (not detailed materials, colors, etc) and rough order-of-magnitude cost estimate(s).

CONSULTANTS

- We will include the preliminary services of the design team, including room acoustics, A/V systems, and basic engineering.

EXCLUSIONS

- Full/final architectural and engineering design services
- Any services not specifically identified herein for this limited scope feasibility study
- Hazardous Building Materials Identification or Analysis

YOUR RESPONSIBILITIES

- You will arrange access to the buildings as necessary and provide timely responses to our questions and when your input is sought.
- You will provide us any available existing building drawings to use as background material for our diagrammatic plans.

BASE FEES

We propose to provide the services noted above for a Lump Sum Fee of Eight Thousand, Five Hundred (\$8,500) Dollars. Our proposed fee will be apportioned as follows:

Existing Spaces Conditions Assessment:	\$1,000
Preliminary Space Programming and Analysis:	\$2,000
Draft Conceptual Design Study:	\$3,000
<u>Final Conceptual Design Study:</u>	<u>\$2,500</u>
TOTAL	\$8,500

OPTION: add services to study potential re-use of the current staff/board meeting room adjacent to cafeteria: \$1,500

This Letter of Agreement has been developed for you at your request. We would be pleased to provide additional services, as amendments to this Agreement, at additional cost. Our Terms and Conditions are attached and are part of this Agreement.



NORTHEAST
COLLABORATIVE
ARCHITECTS

Please let us know if you have any questions about this proposal. Please sign two copies of this Letter of Agreement and return one copy of to our office, as authorization for us to proceed.

Thank you for selecting our firm and we look forward to working with you on this project.

Sincerely,

John D. Scheib, Jr., AIA, LEED AP BD+C
Principal

Accepted by:

Client Name:
Date:



NORTHEAST

COLLABORATIVE

ARCHITECTS

TERMS AND CONDITIONS

Instruments of Service

Drawings, specifications and other documents, including those in electronic form, prepared by NCA and NCA's consultants are Instruments of Service for use solely with respect to this Project. NCA and NCA's consultants shall be deemed the authors and owners of their respective Instruments of Service and shall retain all common law, statutory and other reserved rights, including copyrights.

Additional Services

Additional Services of NCA, including services required of NCA's consultants, beyond the scope of the letter of agreement may be provided as amendments to this agreement at additional cost. Examples of additional services include:

1. Change in the instructions or approvals given by the Owner that necessitate revisions;
2. Enactment or revision of codes, laws or regulations or official interpretations which necessitate changes to previously prepared Instruments of Service;
3. Decisions of the Owner not rendered in a timely manner;
4. Changes in the Project scope, including, but not limited to, size, quality, complexity, the Owner's schedule or budget, or procurement method;
5. Preparation for and attendance at a public hearings or presentations;

Additional services will be billed at the following hourly rates:

Principal	\$175
Project Manager/Job Captain	\$160
Staff Architect	\$150
Technical Staff	\$125
General Staff	\$110

For a change in services of NCA's consultants, compensation shall be computed as a multiple of 1.15 times the amounts billed to NCA for such services.

Risk Allocation:

The Owner and the Architect have considered their risks, rewards and benefits of the project

and the Architect's total fee for services. We hereby agree to allocate those risks such that the Owner agrees that to the fullest extent permitted by law, the Architect's total liability to the Owner for any and all injuries, claims, losses, expenses, damages, or claim expenses arising out to the Agreement from any cause or causes shall not exceed the total amount of our total fee. Such causes include but are not limited to the Architect's negligence, errors, omissions, strict liability, breach of contract or breach of warranty.

Verification of Existing Conditions:

Inasmuch as the design / renovation of an existing building requires that certain assumptions be made regarding existing conditions, and because some of these assumptions may not be verifiable without expending additional sums of money, or destroying otherwise adequate or serviceable portions of the building, the Owner agrees that the Architect may rely upon the accuracy and completeness of the information and documentation supplied by the Owner. In the event concealed or unknown conditions result in extra costs, the Owner agrees to bear all these expenses, including Additional Design Services.

Payments For Services

Payments on account for services rendered and for Reimbursable Expenses incurred shall be made monthly upon presentation of NCA's statement of services.

Payments are due and payable Fifteen (15) days from the date of NCA's invoice.

Reimbursable Expenses are in addition to the compensation for NCA's services and include expenses incurred by NCA and NCA's employees and consultants directly related to the Project.

Compensation for reimbursable expenses, the compensation shall be computed as a multiple of 1.10 times the expenses incurred by NCA, NCA's employees and consultants.



500 Plaza Middlesex
Middletown, CT 06457
www.ncarchitects.com
tel: 860.344.9332
fax: 860.347.4075

December 3, 2021; REVISED December 7, 2021

Mr. Stephen Martoni
Director of Facilities
Amity - Regional School District No. 5
25 Newton Road
Woodbridge, CT 06525

RE: Feasibility Study
Amity - Regional School District No. 5 – Outdoor Classroom Structures
Programming and Conceptual Design Services

Dear Mr. Martoni:

Thank you for requesting our proposal for design study services for the Feasibility Study for the Outdoor Classroom Structures, Programming and Conceptual Design Services, at each of the district's 3 schools. This Letter of Agreement form is based on our understanding of the scope of work and presents our corresponding fee structure.

STUDY UNDERSTANDING

- Review programmatic requirements for each school's outdoor classroom structure and area.
- Consider options for optimal location of the structure and area at each school.
- Review code and regulatory approval requirements.
- Review similar structures at other schools and discuss with those officials and/or vendors/representatives of the structure provider.

ARCHITECT'S RESPONSIBILITIES

- Review available site plans and visit each school.
- Meet with Amity Regional School District's appointed stakeholder group to gather input on space programming, functionality, and future growth/opportunity and review the preliminary input on location at each school.
- We will review code and regulatory approval requirements and include proper steps and considerations in the study.
- Upon your review and approval of the space programming/requirements and initial location, we will develop conceptual site layout diagram, basic conceptual 3-D view(s), and preliminary, rough order-of-magnitude cost estimate.
- We will meet on-line with the stakeholder group to review the study and make revisions requested.
- Submit a final document.

CONSULTANTS

- We will include the preliminary services of the design team, including site layout and basic engineering, as required.



NORTHEAST
COLLABORATIVE
ARCHITECTS

EXCLUSIONS

- Full/final architectural and engineering design services (for permit or contractor bidding) – we will provide proposal for those services at the conclusion of this Study.
- Any services not specifically identified herein for this limited scope feasibility study
- Site Environmental Materials Identification or Analysis
- Property Survey

YOUR RESPONSIBILITIES

- You will arrange access to the sites as necessary and provide timely responses to our questions and when your input is sought.
- You will provide us any available existing site drawings to use as background material for our diagrammatic plans. NOTE: we will use only drawings available to us, including any GIS mapping info we can gather from local and/or regional sources. We have not included any new site/property survey work in this study. If no suitable site drawing information is available, we may request partial site survey work to enhance the accuracy/viability of the study.

BASE FEES

We propose to provide the services noted above for a Lump Sum Fee of Four Thousand, Five Hundred (\$4,500) Dollars. Our proposed fee will be apportioned as follows:

Existing Site Conditions Assessment & Program:	\$1,500
Draft Conceptual Design Study:	\$1,500
<u>Final Conceptual Design Study:</u>	<u>\$1,500</u>
TOTAL	\$4,500

This Letter of Agreement has been developed for you at your request. We would be pleased to provide additional services, as amendments to this Agreement, at additional cost. Our Terms and Conditions are attached and are part of this Agreement.

Please let us know if you have any questions about this proposal. Please sign this document where indicated below, and e-mail to us as authorization for us to proceed.

Thank you for selecting our firm and we look forward to working with you on this project.

Sincerely,

John D. Scheib, Jr., AIA, LEED AP BD+C
Principal

Accepted by:

Client Name:
Date:



NORTHEAST

COLLABORATIVE

ARCHITECTS

TERMS AND CONDITIONS

Instruments of Service

Drawings, specifications and other documents, including those in electronic form, prepared by NCA and NCA's consultants are Instruments of Service for use solely with respect to this Project. NCA and NCA's consultants shall be deemed the authors and owners of their respective Instruments of Service and shall retain all common law, statutory and other reserved rights, including copyrights.

Additional Services

Additional Services of NCA, including services required of NCA's consultants, beyond the scope of the letter of agreement may be provided as amendments to this agreement at additional cost. Examples of additional services include:

1. Change in the instructions or approvals given by the Owner that necessitate revisions;
2. Enactment or revision of codes, laws or regulations or official interpretations which necessitate changes to previously prepared Instruments of Service;
3. Decisions of the Owner not rendered in a timely manner;
4. Changes in the Project scope, including, but not limited to, size, quality, complexity, the Owner's schedule or budget, or procurement method;
5. Preparation for and attendance at a public hearings or presentations;

Additional services will be billed at the following hourly rates:

Principal	\$175
Project Manager/Job Captain	\$160
Staff Architect	\$150
Technical Staff	\$125
General Staff	\$110

For a change in services of NCA's consultants, compensation shall be computed as a multiple of 1.15 times the amounts billed to NCA for such services.

Risk Allocation:

The Owner and the Architect have considered their risks, rewards and benefits of the project

and the Architect's total fee for services. We hereby agree to allocate those risks such that the Owner agrees that to the fullest extent permitted by law, the Architect's total liability to the Owner for any and all injuries, claims, losses, expenses, damages, or claim expenses arising out to the Agreement from any cause or causes shall not exceed the total amount of our total fee. Such causes include but are not limited to the Architect's negligence, errors, omissions, strict liability, breach of contract or breach of warranty.

Verification of Existing Conditions:

Inasmuch as the design / renovation of an existing building requires that certain assumptions be made regarding existing conditions, and because some of these assumptions may not be verifiable without expending additional sums of money, or destroying otherwise adequate or serviceable portions of the building, the Owner agrees that the Architect may rely upon the accuracy and completeness of the information and documentation supplied by the Owner. In the event concealed or unknown conditions result in extra costs, the Owner agrees to bear all these expenses, including Additional Design Services.

Payments For Services

Payments on account for services rendered and for Reimbursable Expenses incurred shall be made monthly upon presentation of NCA's statement of services.

Payments are due and payable Fifteen (15) days from the date of NCA's invoice.

Reimbursable Expenses are in addition to the compensation for NCA's services and include expenses incurred by NCA and NCA's employees and consultants directly related to the Project.

Compensation for reimbursable expenses, the compensation shall be computed as a multiple of 1.10 times the expenses incurred by NCA, NCA's employees and consultants.



NORTHEAST
COLLABORATIVE
ARCHITECTS

Northeast Collaborative Architects & Amity Regional School District No. 5
Firm Introduction



MIDDLETOWN, CT | NORTH KINGSTOWN, RI | WASHINGTON, DC



NORTHEAST
COLLABORATIVE
ARCHITECTS

TABLE OF CONTENTS

SECTION 1

Brief History and Recent School Studies & Focused Projects

SECTION 2

Principal Resume

John D. Scheib, Jr., AIA, LEED AP BD+C
Principal-in-Charge

SECTION 3

Firm Experience

References



SECTION 1



NORTHEAST
COLLABORATIVE
ARCHITECTS

A Brief History of Northeast Collaborative Architects

We are an award-winning architectural design firm, with decades of public sector practice. Our in-house services include architecture, master planning, preliminary design & feasibility studies, security planning, code expertise, interior & FF&E design, LEED & high-performance building consultation, specification coordination, project development & management services, and integrated design process services.

Our main office is located in Middletown, CT. Our principal-in-charge and project manager for your project, as well as a significant amount of our design team, are located in this office. We also have offices in Rhode Island and Washington, DC. We have been operating as Northeast Collaborative Architects for over ten years. The beginnings of firm date to the early 1980's, when both Bianco Giolitto Weston Architects and Newport Collaborative Architects started in Connecticut and Rhode Island respectively. For over 35 years, Bianco Giolitto Weston Architects developed into one of the most respected design firms for Connecticut school projects, emphasizing quality solutions and dedicated client service. Design awards and repeat work with public clients demonstrate these principles. The ownership structure of the firm is a wholly-owned partnership by firm principals Synfoni Bailey-Green, Andrea T. Baranyk, Sean Donadio and John D. Scheib, Jr.

Selecting our team provides you with the most qualified team. I will serve as both principal-in-charge throughout the project, providing a continuous and focused level of high quality service. In the last 10 years, we have completed nearly \$200,000,000 in public school design in Connecticut. We are fully versed in school security measures and we are leaders in energy-efficient and sustainable design initiatives. Both are innate to our design process.

We look forward to the selection process and appreciate the opportunity to more fully demonstrate our capabilities. I can be reached at 860-344-9332 or jscheib@ncarchitects.com

Sincerely,

John D. Scheib, Jr., AIA, LEED AP BD+C
Principal-In-Charge



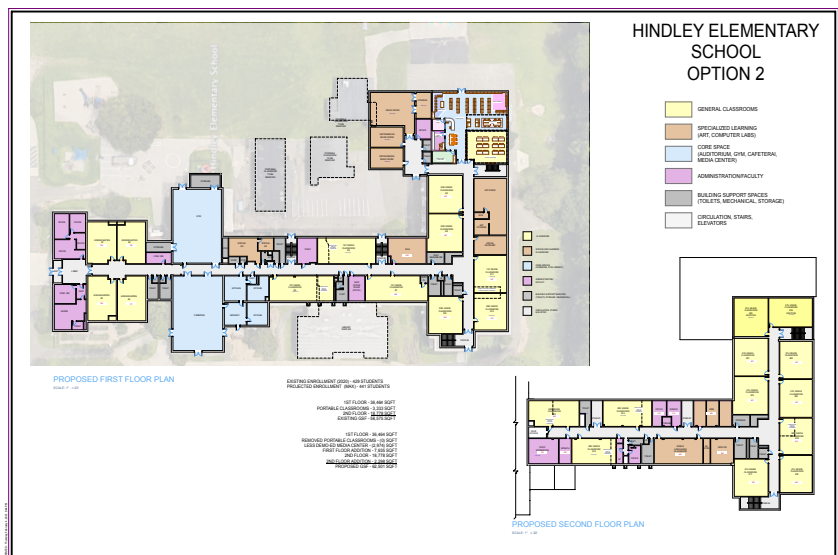
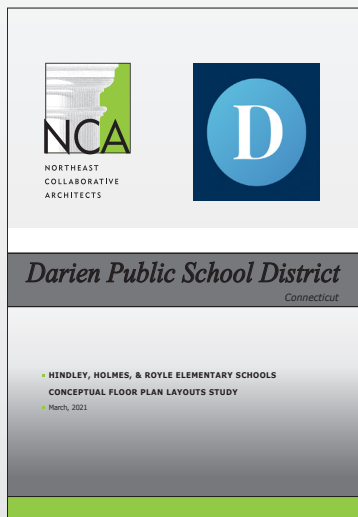
NORTHEAST
COLLABORATIVE
ARCHITECTS

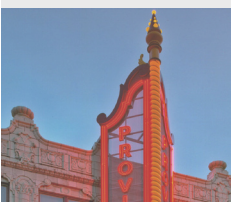
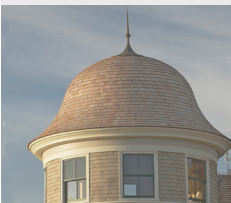
Northeast Collaborative Architects

Recent School Studies & Focused Projects:

- Conceptual planning, estimating and design services for the creation of new and/or renovated entry vestibule and main offices to provide an enhanced level of safety and security at 4 schools (Granby)
- Review and evaluate energy-efficient solutions for air conditioning at 6 elementary schools (Glastonbury, with CES)
- Review and evaluate energy-efficient solutions, and design services, for expanded air conditioning at Woodland Regional High School and Long River Middle School (Regional School District 16, with CES)
- Capacity studies to consider the opportunity to accept additional school populations (Granby)
- Facility needs assessment study to incorporate disparate programmatic elements at the high school building (Granby)
- Develop options for the replacement of portable classrooms, enhancement of specialized learning spaces to transform and incorporate the district's 5-year Capital Projects Infrastructure Plan to modernize 3 elementary schools (Darien)

We take great pride in our successful delivery of outstanding school studies and projects. We are a national thought-leader in educational project design. Our school projects have won AIA/RI and ABC-CT design and outstanding team awards. We have spoken at conferences (AIA's Committee for Architecture in Education and the Association for Learning Environments {A4LE} International Conference) and have been published in media regarding specialized learning environment design.





SECTION 2



NORTHEAST
COLLABORATIVE
ARCHITECTS

John D. Scheib, Jr., AIA, LEED AP BD+C

Principal • jscheib@ncarchitects.com

Education

Oklahoma State University:
Bachelor of Architecture, 1994

Registration

Connecticut
Massachusetts
Maryland
Vermont
NCARB Certified
MA MCPPO Certified

Memberships

AIA Connecticut
AIA, Committee on Architecture
for Education
ACE Mentor Program:
Hartford Chapter Chairperson (2008-2016)
USGBC: LEED AP BD+C
Assoc. for Learning Environments (A4LE)
Town of South Windsor Architecture &
Design Review Committee

Awards

William Caudill Travelling Fellow, 1994
AIA RI Merit Award 2014 (*Lyme-Old
Lyme High School*)
ABC CT 2014 & Connecticut Green
Building Council Award 2016 (*JM Wright
Technical High School*)
GrowSmart RI 2019 (*Innovate Newport*)



John D. Scheib, Jr. has strong design and management skills that seek to achieve the delicate balance of quality design, budget consideration and timely completion. Throughout John's career he has served projects as both a design architect and as a project manager. One of his key strengths is coordinating the efforts of the entire design team, working collaboratively to ensure that appropriate solutions are realized. This is

exemplified in his key role as project manager on the complex, award-winning renovations undertaken at Lyme-Old Lyme High School and J.M. Wright Technical High School. Each project set benchmarks for sustainability, with J.M Wright becoming the first technical high school in Connecticut to receive any LEED Certification. As a LEED Accredited Professional, John has become knowledgeable in, and a strong advocate for, sustainability in educational project design.

To complement and broaden his focus on project design and management, John has been an active member of the AIA and the Association for Learning Environments (A4LE). He has presented at AIA Committee for Architecture in Education and A4LE International conferences. He served as the Chairperson of the Hartford Chapter of the ACE Mentor Program from 2008 to 2016, providing career direction to high school students in the fields of Architecture, Construction and Engineering.

Mr. Scheib is committed to design excellence, environmental sustainability, and community involvement and is a leader who strives to champion design and project delivery excellence on each project.



Kelly Lane Primary School • Granby, CT

NCA's preliminary study examined the community's declining enrollments and determined that the town no longer required two upper elementary schools. Transformation entailed renovating many upper elementary classrooms into two Pre-School and six Kindergarten classrooms, each with their own child-height toilet rooms.



Region 18: Lyme- Old Lyme High School • Old Lyme, CT

Region 18 and the design team embarked on a major renovation and new additions to the existing 30-year-old high school. As one of the first projects in Connecticut required to meet sustainability goals it became an experimental model to explore ideas and cost impacts in achieving LEED Gold from USGBC.



**NORTHEAST
COLLABORATIVE
ARCHITECTS**

Selective Career Experience

www.ncarchitects.com



Bullard-Havens Technical High School, Ed Specs and Schematic Design • Bridgeport, CT

NCA led the preliminary and schematic design effort for phased occupied renovations of the 71,000 SF "A" Building including classrooms, science labs, computer labs, career & technical education (CTE) and lecture hall spaces as well as administrative offices. Exterior site improvements include ADA accessibility and athletic facilities including a 10,000 sf field house, 5,000 sf garage building and 500 sf storage building. The field house contains male and female locker rooms, toilet and shower facilities, concession stand, spectator toilet facilities and equipment storage. The site improvements feature a new running track, sports play fields, basketball and tennis courts. The main sports play field includes new bleachers and press box. The total construction budget for the proposed project was \$40,827,000. NCA also provided pre-design, space programming, and educational specifications (Ed Spec) services.



Lyme-Old Lyme Elementary School Media Centers Old Lyme, CT

A multi-year transformation of the Library/Media Centers at the Mile Creek Elementary School and the Lyme Consolidated Elementary School required NCA to develop a two-phased design approach. Phase one, completed mostly during the first summer, saw the revision of book stacks, informal reading areas, and directed learning/presentation areas. A new office/workroom and a small TV studio were created at Mile Creek. The following summer brought the transformations to completion with the design and installation of new Library/Media Center circulation desks.



JM Wright Technical High School • Stamford, CT

New additions and complete renovation of a mid-20th Century, 200,000 SF technical high school into a modern and efficient center for career and technical education (CTE). The \$90,000,000 transformation project features dynamic, new CTE programs, including Information Systems Technology and Digital Media. Building systems. Exterior envelope and interior finishes were all upgraded to enhance the educational experience for a new generation of students. The project achieved the state's first LEED Silver Certification from the USGBC for a technical high school.

Martin Luther King School • Hartford, CT

NCA supported JCJ's design efforts on the \$85,000,000 renovation and additions of this historic school building, providing supplemental construction document efforts for vertical circulation elements such as stairs, elevators, and ramps, both interior and exterior, as well as associated guardrails and handrails. NCA is proud to have played a role in the 174,000 SF reimagining and renovation of the 1922 Neo-Gothic Thomas Snell building.

Plainfield High School • Plainfield, CT *

Design Team Leader for a new construction high school in Plainfield, CT. The schools hosts an average of 850 student from grades 9-12. The 180,000 SF project's construction costs totaled \$48 million.

Barnum/Waltersville School • Bridgeport, CT *

Design Architect for 2 new Pre-K through 8 schools at 1 site: 1250 students. 180,000 SF, \$50 million.

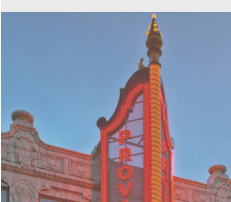
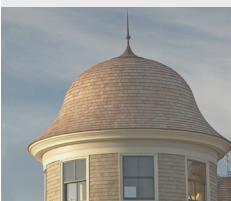
Groton Public Schools • Groton, CT *

Design Team Leader for major addition (110,000 SF) to existing high school. \$40 million.

Fairchild-Wheeler Inter-District Magnet Campus High School • Bridgeport CT *

Design Architect for a new 250,000 SF Multi-Magnet High School for 1500 students. \$87 million.

** Please Note that projects were completed while John Scheib was at another firm.*



SECTION 3



NORTHEAST
COLLABORATIVE
ARCHITECTS

Firm Profile



Northeast Collaborative Architects

In over three decades of practice, Northeast Collaborative Architects has built a reputation for delivering quality, innovative, award-winning projects. Our basic services encompass architecture, interior design, master planning and sustainable design. Our work encompasses new construction, restorations and adaptive reuse with special interest in cultural, public sector, hospitality, educational and residential projects.

At NCA our work is exciting and we enjoy involving our clients in the design process using traditional and electronic tools to communicate the design possibilities of their work with them. Our practice constantly evolves by adopting the latest technical tools available. We had been leaders in implementing computer-aided design and now are at the forefront of BIM (building information modeling), allowing us to work in three-dimensions.



Team Approach

NCA is a highly motivated team of architects who work in a boutique studio environment. Our professionals share and develop ideas critical for collaboration and develop efficient, cost cycle and buildable designs that inspire clients, stakeholders and the public.



NORTHEAST
COLLABORATIVE
ARCHITECTS



Principals & Staff

One of our principals oversees the continuity and quality of design for each project that is executed by NCA. They collaborate with the office's project managers and architectural, planning and interior design professionals from project conception to construction closeout and remain the owner's primary contact.



Services

NCA provides architectural, planning and interior design services for our clients, taking responsibility for all aspects of the process including all engineering disciplines based on our clients needs. Particular in-house experts beyond the normal include: historic architects (qualified per the US Secretary of the Interior's Guidelines), sustainable design (LEED accredited professionals), public and private security design, food service designers and hospitality planners.

Philosophy

We are passionate about design. The buildings, spaces and environments we help create not only solve our clients' need. They add value by using the least resources to solve those needs, enhance their end users' experience by designing to the human scale with respect for their historic contexts and environmental impact.



NORTHEAST
COLLABORATIVE
ARCHITECTS

Region 18 • Lyme-Old Lyme High School

Old Lyme, Connecticut



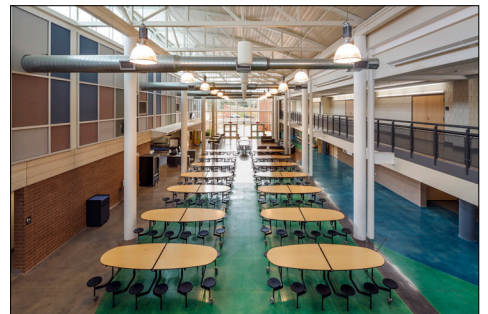
NCA was retained to assist Region 18 in updating their existing high school facility.

The original design consisted of two separate buildings connected by a bridge. With administrative services on the second floor, a secure entry was difficult to maintain. The entire upper floor of the two-story structure was clad in an aging fabricated metal skin.

A consensus was reached with the communities of Lyme and Old Lyme on an addition and renovation scheme. It created a new secure entry, a student commons on the first floor, and totally renovated the building to the statutory requirements of "Renovate-as-New." The building was also designed to comply with LEED Silver requirements.

A \$47,900,000 program was initiated to completely renovate the existing structure and infrastructure and to provide additions to meet the needs of educational program shortfalls.

Included in the energy program is a new 120 geothermal well system to provide heating and cooling to the building. While the energy system added about 2% to the overall cost it will pay itself off in six years and has a fifty year life span resulting in significant energy cost savings to both communities.



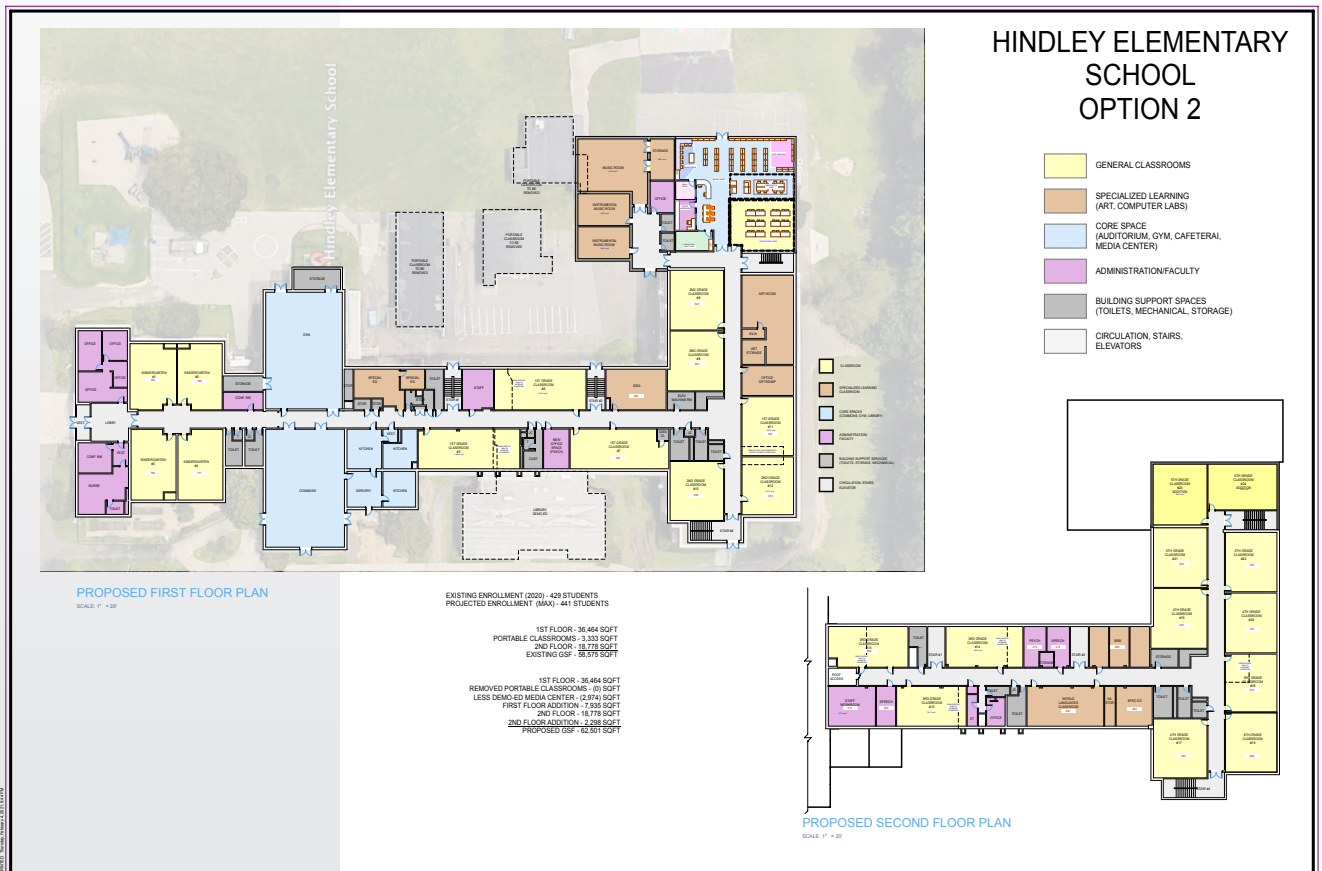
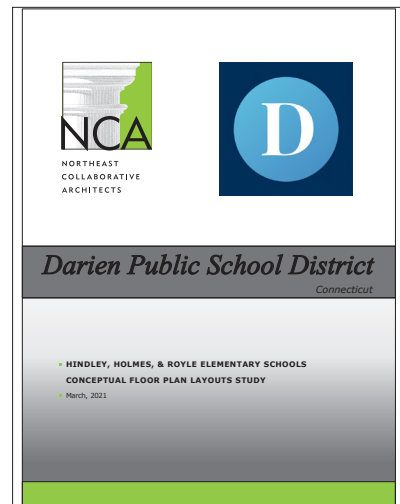


NORTHEAST
COLLABORATIVE
ARCHITECTS

Darien Public Schools

Darien, Connecticut

NCA was engaged by Darien Public Schools, Darien, CT to develop various studies which included options for the removal of portable classrooms, enhanced library/media center spaces, as well as classroom and infrastructure improvements. These studies ultimately focused on the schools with highest priority needs: Hindley, Holmes and Royle Elementary Schools. Attached is a summary of the study with some of the conceptual site and floor plan layouts.





NORTHEAST
COLLABORATIVE
ARCHITECTS

Kelly Lane Intermediate School

Granby, Connecticut



Nestled in a rural setting the existing school was a nondescript '50s building. By adding 33,000SF and renovating 27,000SF NCA created a state of the art intermediate school with a welcoming entry and facilities scaled to young children. The gabled forms reflect the neighborhood's agrarian context and house the administration office, media center, and renovated cafeteria signified by a clerestory at the intersection.

New facilities include a gymnasium, music room, art room, science room as well as new classrooms to serve grades 3 through 6.





NORTHEAST
COLLABORATIVE
ARCHITECTS

Kelly Lane Primary School

Granby, Connecticut



The renovated Kelly Lane Primary School opened after an intense summer of construction, transforming the school from its prior use as an upper elementary school. NCA's preliminary study examined the community's declining enrollments and determined that the town no longer required two upper elementary schools. Transformation entailed renovating many upper elementary classrooms into two Pre-School and six Kindergarten classrooms, each with their own child-height toilet rooms.

The new Kindergarten classrooms feature pass-through connectors with two new toilet rooms shared between two classrooms. These pass-throughs provide flexibility in the assignment of the toilet rooms, teacher interaction and crisis management, and a secondary means to escape an incident in either room. Murals painted by local artist Sheri Fitzpatrick are a delight to the school community.

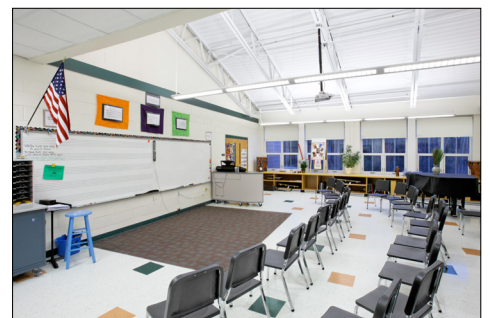
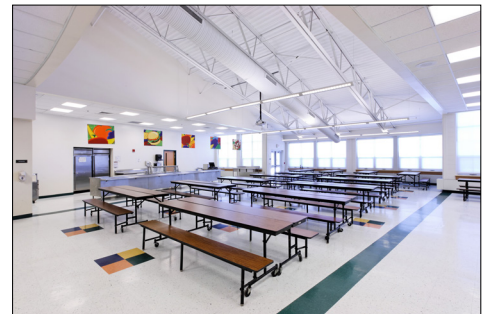




NORTHEAST
COLLABORATIVE
ARCHITECTS

Wells Road Intermediate School

Granby, Connecticut



The existing nine-acre site posed serious restrictions on the renovation and expansion of the existing 19,000 SF Elementary School to create a virtually new 60,000 SF Intermediate School for grades 3–6. This limitation encouraged the use of a semi-circular form, reminiscent of a carousel, to use the site to its fullest potential. NCA's design tripled the number of classrooms and added a new gymnasium, cafeteria and kitchen, media center, and specialty classrooms for science, music and art.

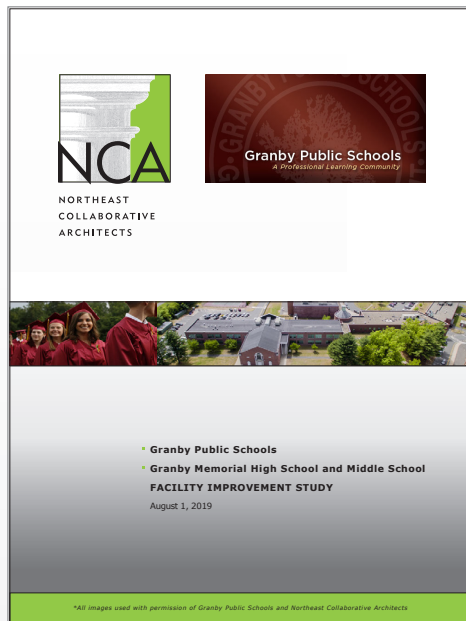


NORTHEAST
COLLABORATIVE
ARCHITECTS

Granby Memorial High School - Facility Study

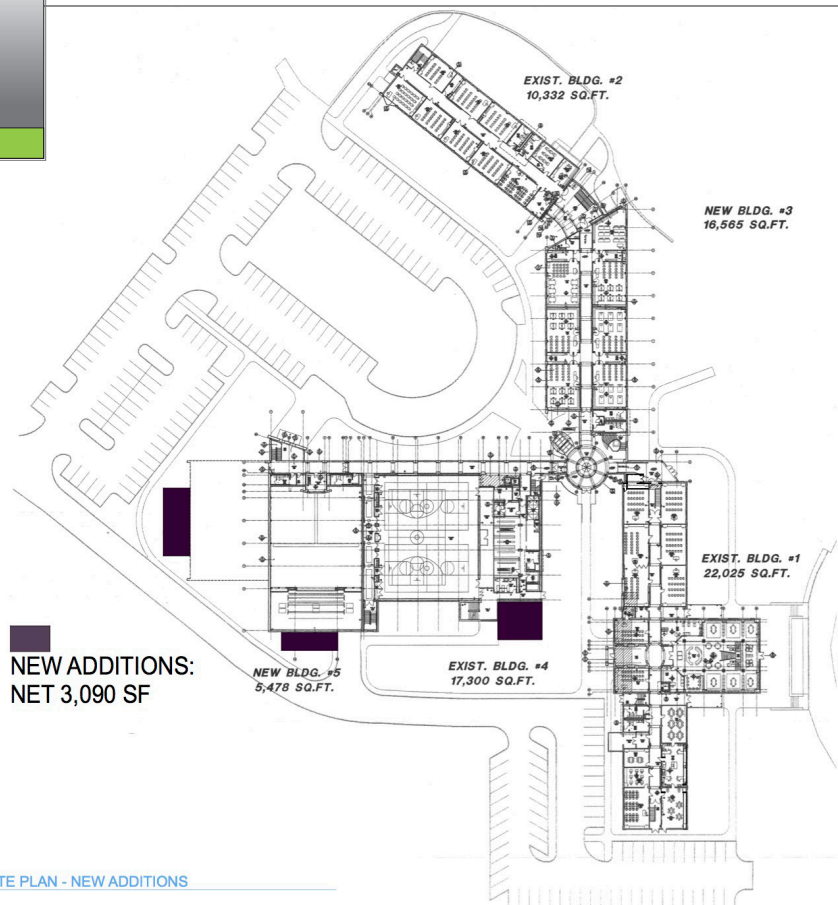
Granby, Connecticut

Northeast Collaborative Architects provided this study as requested by the Granby Public Schools for the potential Granby Memorial High School Facility Upgrades/Alterations project. The goal was to provide the design and planning expertise required to provide Granby Public Schools with the information and experience necessary to help shape a strong future for the town. The main focus of which was to ensure that the school-aged youth of the Town of Granby are provided the best learning environments possible.



PROJECT BASIS

- A recent NEAS&C report has noted certain deficiencies requiring attention.
- Certain building infrastructure and systems are reaching the end of their optimal operating efficiency and may require replacement in the near future.
- Need to update certain learning spaces to current and foreseeable future academic program standards.
- Safety concerns and/or code violations within the existing building





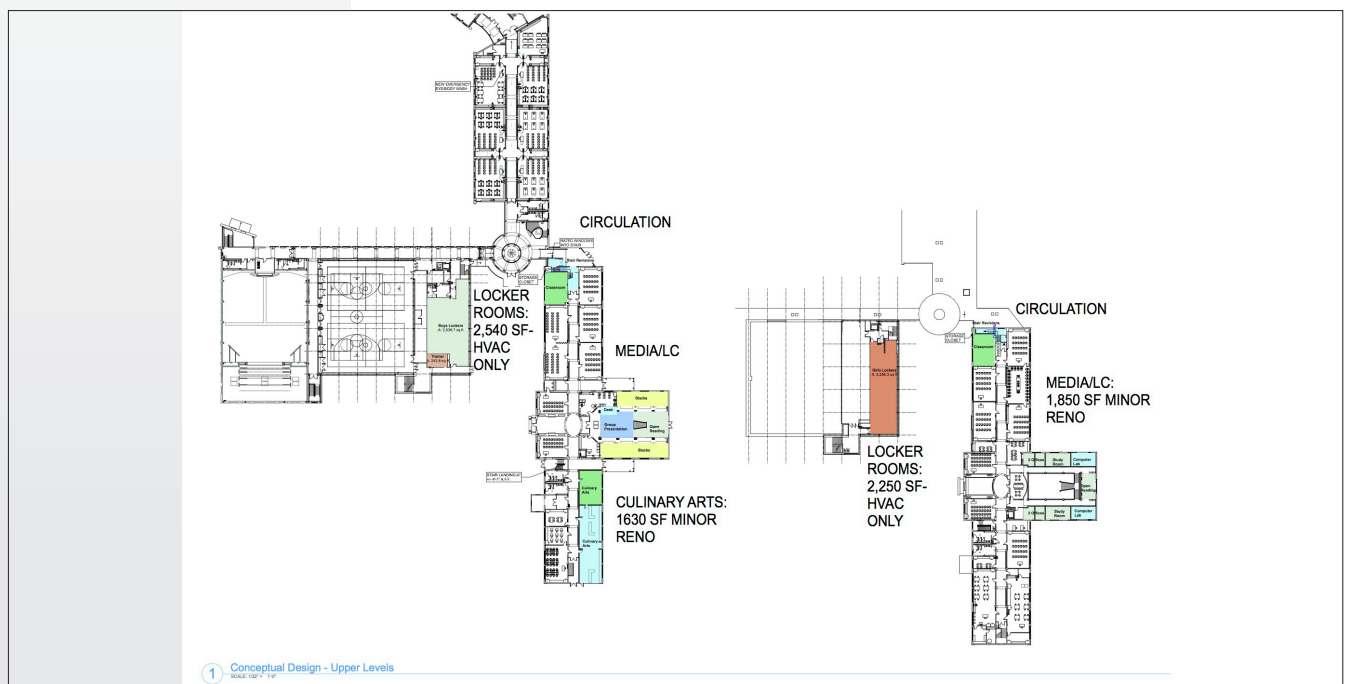
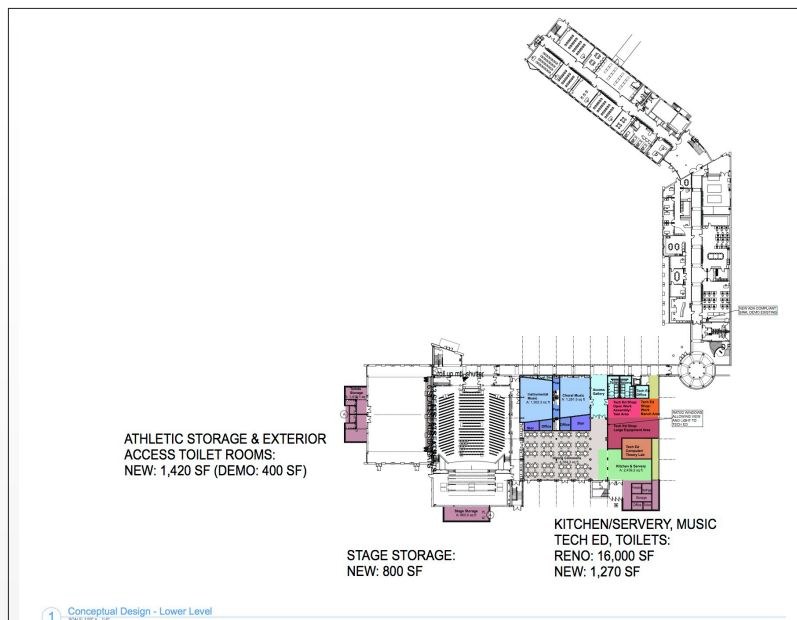
NORTHEAST
COLLABORATIVE
ARCHITECTS

Granby Memorial High School - Facility Study

Granby, Connecticut

The study provided a review of the outline plan for the potential high school facility upgrades/alteration project to address infrastructure and systems deficiencies and educational program improvements. We met with the Superintendent and his appointed team to discuss the needs and develop key goals and priorities for the study. We reviewed space needs and physical improvements required for infrastructure and systems upgrades. We reviewed the educational program needs and assisted in development of Educational Specifications for the intended project. In conjunction with the development of Educational Specifications, we

developed a space program identifying spaces, their student capacity and size requirements, and key components and infrastructure needs. We performed multiple conceptual test-fit layout diagrams of programs in either existing or potentially new spaces. We reviewed and discussed preliminary phasing, logistics and cost estimates and offered input and suggestions as applicable. They study consisted of key goals and priorities for the project, preliminary Educational Specifications, the approved space program, the optimal conceptual test-fit layout diagrams, and order-of-magnitude opinions of potential construction costs, phasing, and logistics.





NORTHEAST
COLLABORATIVE
ARCHITECTS

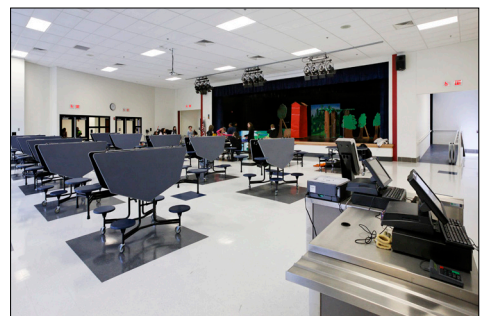
Derby Middle School

Derby, Connecticut



The new Derby Middle School is designed for Grades 6 through 8 for the City of Derby. The site is extremely complicated and involves substantial rock excavation to accommodate the facility on the existing high school Site.

NCA designed the project to comply with LEED Silver requirements. A micro-turbine system supplies the existing high school with electricity and the new middle school with heating and cooling capacity.





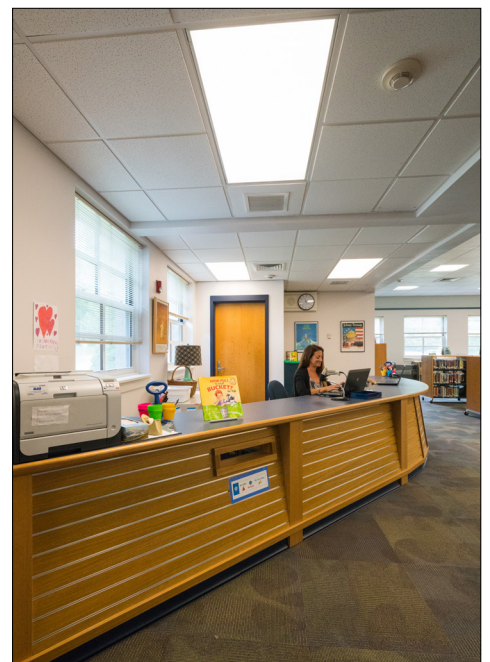
NORTHEAST
COLLABORATIVE
ARCHITECTS

Lyme-Old Lyme Elementary School Media Centers *Lyme-Old Lyme, Connecticut*



A multi-year transformation of the Library/Media Centers at the Mile Creek Elementary School and the Lyme Consolidated Elementary School required NCA to develop a two-phased design approach. Phase one, completed mostly during the first summer, saw the revision of book stacks, informal reading areas, and directed learning/presentation areas. A new office/workroom and a small TV studio were created at Mile Creek. The following summer brought the transformations to completion with the design and installation of new Library/Media Center circulation desks.

NCA worked in close coordination with Pierre Marchand Architectural Millwork to create the new desks. Providing both improved functionality and a striking focal point. The desks feature white oak veneer and laminate tops to match adjacent library materials. Slat-wall display panels highlight new or featured reading material.





NORTHEAST
COLLABORATIVE
ARCHITECTS

REFERENCES

Regional School District 18 - Lyme-Old Lyme Public Schools

Old Lyme, Connecticut

John Rhodes, Director of Facilities and Technology (retired)

e-mail: jrhodes777@gmail.com

Multiple projects in Lyme and Old Lyme, CT, beginning in 2008

Scope: *Elementary School Media Centers Renovations (2016)*

High School Additions and Major Renovations (2013): 125,000SF

Darien Public Schools

Darien, Connecticut

Alan Addley Ed.D., Superintendent of Schools:

(203) 722-8527

Richard Rudl, Director of Finance and Operations:

(203) 656-7405

Portable Classroom Removal and Libraries Re-Imagined Study (2020-2021)

Scope: *Facility Study to Remove Portable Classrooms (2020-2021)*

Concept Plans of 3 Elementary Schools: Hindley, Holmes & Royle (2020-2021)

Granby Public Schools

Granby, Connecticut

Anna Robbins, Business Manager:

(860) 884-7168

Shannon Sullivan, Director of Facilities:

(860) 884-6015

Multiple projects in the Town of Granby beginning in 2004

Scope: *Granby Memorial High School Code Compliance and ADA Improvements (2020)*

Granby Memorial Middle School Low-Slope Roof Replacement (2020): 15,000 SF

Granby Memorial High School New Entry Vestibule Addition (2019)

Granby Memorial High School NEASC Report Feasibility Study (2019)

Granby Memorial High School Capacity Study (2017)

Kelly Lane Transformation to PreK-2 (2016): 12,000SF Renovation District-wide Study (2015)

Kelly Lane (2006): 33,000SF Addition; 27,000SF Renovation

Wells Road (2005): 41,000SF Addition; 19,000SF Renovation



NORTHEAST
COLLABORATIVE
ARCHITECTS

REFERENCES

Regional School District 16

Prospect & Beacon Falls, Connecticut

Steve Martoni, Director of Facilities (currently with Reg. Dist. 5):

(203) 397-4818

stephen.martoni@amityregion5.org

Multiple projects in Prospect & Beacon Falls, beginning in 2017

Scope: Long River Middle School RTU Replacement project (2020)

Woodland Regional High School A/C Improvements project (2018)

CT State Department of Education

(via DAS Construction Services)

Barbara Cosgrove, Project Manager, DAS DCS:

(860) 713-5644

Dennis Tovey, Project Manager, DAS, DCS:

(860) 713-5619

Bullard-Havens Technical High School in Bridgeport, CT, begun in 2017

Scope: 70,000SF Major Renovation, Site Improvements, Schematic Design (2018)

JM Wright Technical High School in Stamford, CT, begun in 2010

Scope: 200,000SF Major Renovation and Additions (2014)

We strongly encourage you to contact our references. In each case above, we have been awarded multiple projects based on our level of service and dedication to the client.