



VICTOR VALLEY UNION HIGH SCHOOL DISTRICT

TechEd Department

16350 Mojave Drive, Victorville, CA 92395-3655

760.955.3201 ext. 10202

Addendum #1

RFP 22_110_Cabling Infrastructure_FY2022_YR 25

Information being provided in this addendum was handed out at the mandatory job walk on 1-5-2022. Electronic version is being provided for assistance in viewing the material.

BOARD OF TRUSTEES

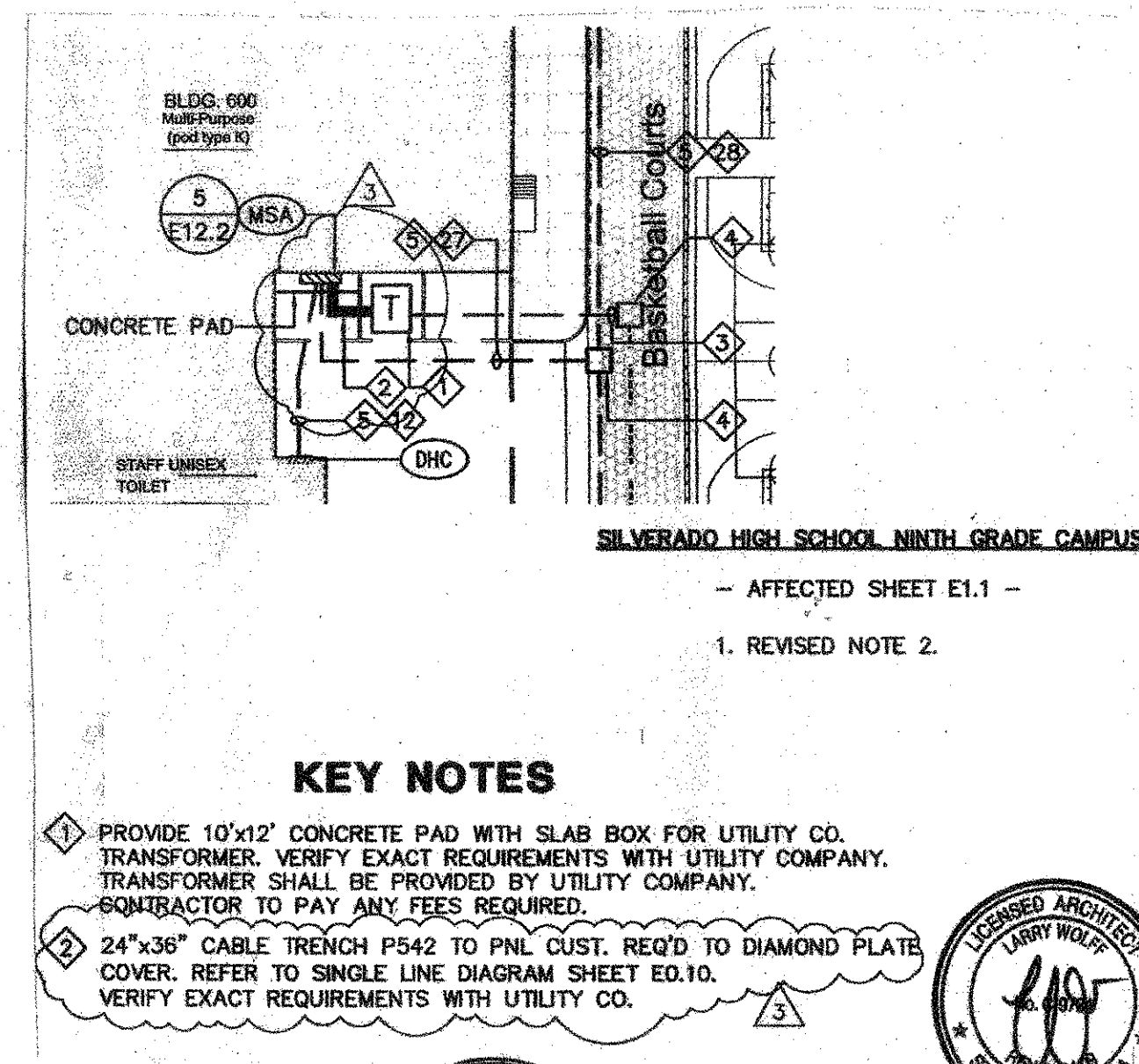
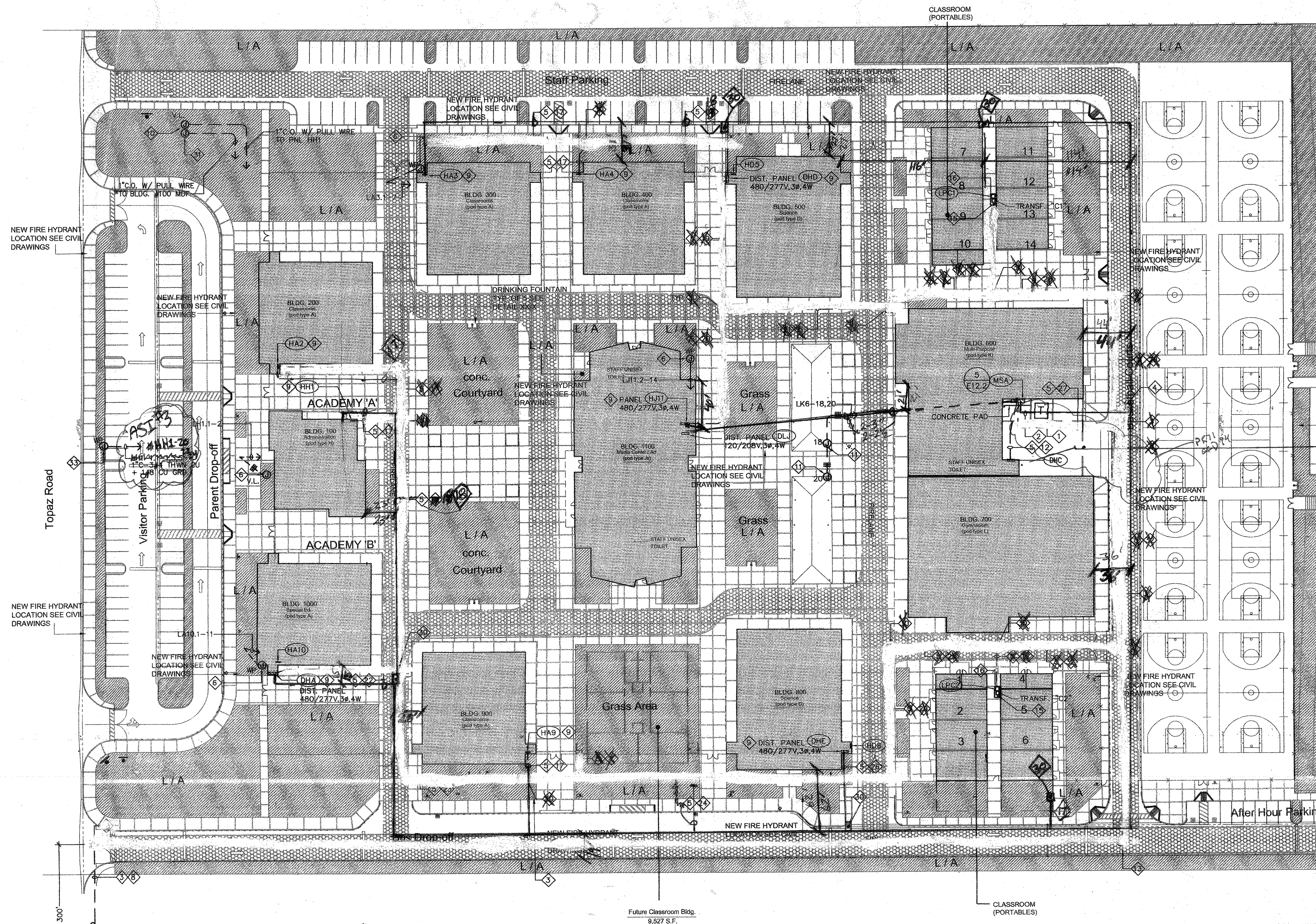
Barbara J. Dew

Caleb Castaneda

Jose Berrios

Joshua W. Garcia

Penny Edmiston



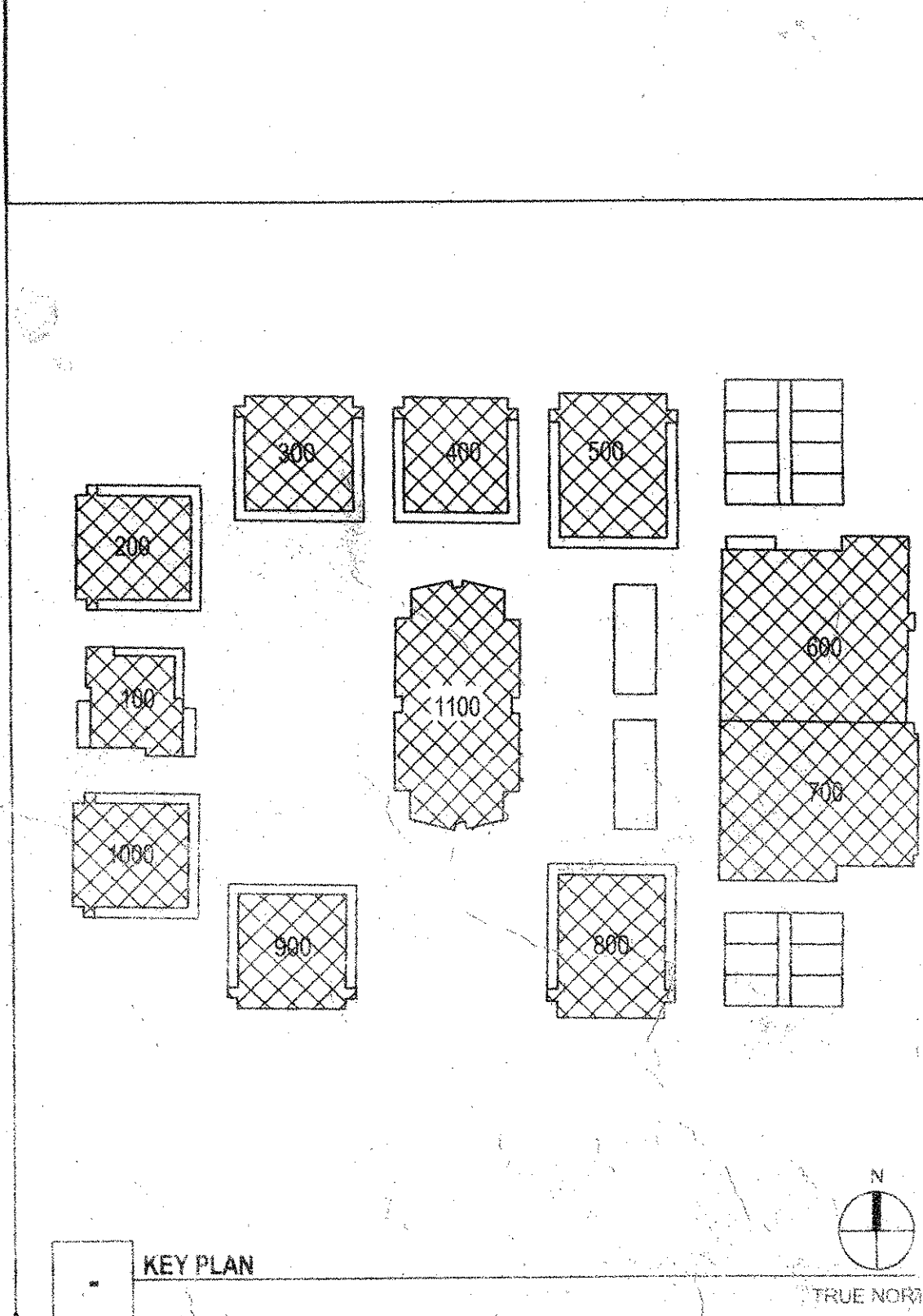
- ### KEY NOTES
- PROVIDE 10'x12' CONCRETE PAD WITH SLAB BOX FOR UTILITY CO. TRANSFORMER. VERIFY EXACT REQUIREMENTS WITH UTILITY COMPANY. TRANSFORMER SHALL BE PROVIDED BY UTILITY COMPANY. CONTRACTOR TO PAY ANY FEES REQUIRED.
 - UNDERGROUND UTILITY CO. SECONDARY SERVICE FEEDER RUN. PROVIDE AND INSTALL (6) 4" C.O. (CABLING AS REQUIRED) IN 18" Wx24" D CABLE TRENCH. REFER TO SINGLE LINE DIAGRAM, SHEET E0.10 VERIFY EXACT REQUIREMENTS WITH UTILITY CO.
 - PROVIDE (1) 5" C.O. (CONCRETE ENCASED) TO UTILITY CO. POINT OF CONNECTION. VERIFY EXACT POINT OF CONNECTION AND REQUIREMENTS WITH UTILITY CO.
 - UNDERGROUND CONCRETE PULLBOX 3'x5'x4' FOR POWER UNLESS NOTED OTHERWISE. PULLBOX SHALL BE COMPLETE WITH HEAVY DUTY, STEEL TRAFFIC COVER ENGRAVED "POWER" (TYPICAL). PULLBOXES SHALL BE SIZED PER CODE TO ACCOMMODATE CONDUITS INDICATED.
 - UNDERGROUND FEEDER RUN(S) FOR POWER, REFER TO SINGLE LINE DIAGRAM E0.10 FOR CONDUCTOR SIZE.
 - WEATHERPROOF J-BOX. MAKE CONNECTION TO IRRIGATION CONTROLLER UNIT BY LANDSCAPE. VERIFY EXACT LOCATION AND REQUIREMENTS WITH LANDSCAPE CONTRACTOR.
 - 2 1/2" CONDUIT SPARE WITH PULL LINE FOR FUTURE PORTABLE CLASSROOM.
 - OWNER TO PROVIDE PERMIT FROM CITY FOR 6" WIDE TRENCH EASEMENT ALONG TOPAZ ROAD ALL THE WAY UP TO PALMDALE DRIVE APPROXIMATELY 300 FEET PER SCE REQUIREMENTS.
 - REFER TO POWER FLOOR PLAN DRAWING FOR EXACT LOCATION OF OTHER EQUIPMENT CABINETS THAT ARE NOT SHOWN HERE.
 - WEATHERPROOF J-BOX FOR FUTURE SIGN.
 - PROVIDE WEATHERPROOF J-BOX AT CANOPY SIDE FOR RECEPTACLE AND LIGHTING POINT OF CONNECTION. VERIFY EXACT LOCATION.
 - (2) 4" C. AND (2) 2 1/2" C. SPARE WITH PULL WIRE.
 - 5'x8' SCE UNDERGROUND CONCRETE PULLBOX SERVICE ENCLOSURE.
 - EXISTING SCE TRANSFORMER. VERIFY EXACT LOCATION.
 - PROVIDE 225A, 3P NEMA 3R CIRCUIT BREAKER MOUNTED AT UNISTRUT CHANNEL, SUPPORT AS REQUIRED.
 - 6" THICK CONCRETE PAD. CONTRACTOR TO PLACE ALL ELECTRICAL APPURTENANCES AS SHOWN ON DETAILS PER SCHOOL DISTRICT REQUIREMENTS.
 - (1) 2 1/2" C. AND (1) 2 1/2" C. SPARE WITH PULL WIRE.
 - (2) 2 1/2" C. AND (2) 2 1/2" C. SPARE WITH PULL WIRE.
 - (2) 4" C. AND (2) 2 1/2" C. SPARE WITH PULL WIRE.
 - (2) 3" C. AND (2) 2 1/2" C. SPARE WITH PULL WIRE.
 - (2) 4" C., (2) 3" C. AND (4) 2 1/2" C. SPARE WITH PULL WIRE.
 - (3) 4" C., (2) 2 1/2" C. AND (4) 2 1/2" C. SPARE WITH PULL WIRE.
 - (3) 4" C. AND (4) 2 1/2" C. SPARE WITH PULL WIRE.
 - (3) 4" C., (2) 2 1/2" C. AND (4) 2 1/2" C. SPARE WITH PULL WIRE.
 - (2) 4" C., (3) 4" C. AND (5) 2 1/2" C. SPARE WITH PULL WIRE.
 - (2) 4" C., (2) 2 1/2" C. AND (4) 2 1/2" C. SPARE WITH PULL WIRE.
 - (6) 4" C., (3) 4" C. (2) 3" C. (2) 2 1/2" C. AND (8) 2 1/2" C. SPARE WITH PULL WIRE.
 - (2) 4" C., (2) 3" C., (1) 2 1/2" C., AND (4) 2 1/2" C. SPARE WITH PULL WIRE.
 - (2) 4" C., (3) 4" C. AND (4) 2 1/2" C. SPARE WITH PULL WIRE.
 - 2'x3'x4" DEPTH UNDERGROUND CONCRETE PULL BOX WITH BOLT DOWN TRAFFIC COVER ENGRAVED "POWER".
 - WEATHERPROOF J-BOX FOR SIGN EVENT CONTROLLER. ROUTE CONDUIT TO STC-H. VERIFY EXACT LOCATION.
 - (2) 4" C., (3) 4" C., (1) 2 1/2" C., & (4) 2 1/2" C. SPARE W/ PULL WIRE.
 - IRRIGATION BOOSTER PUMP W/ NEMA 4 ENCLOSED PANEL, CIRCUIT BREAKER, MAGNETIC STARTER, HOA SWITCH AND COMPONENTS FOR AUTOMATIC BOOSTER PUMP CONTROL. REFER TO IRRIGATION PLAN SHEET U-1, U.2, U.3, U.4, U.5 & U.6 FOR EXACT LOCATION AND OTHER REQUIREMENTS.

UTILITY CONTACT

UTILITY: S.C.E.
ROBERT CERVANTES—SERVICE PLANNER ENGINEER.
PHONE: 760-951-3278
MOBILE: 760-953-9583
ADDRESS: 12353 HESPERIA ROAD
VICTORVILLE, CA 92325

"DIG ALERT NOTICE"

FOR DIG ALERT ID NUMBER CALL UNDERGROUND SERVICE ALERT TOLL FREE 1-800-422-4133 TWO WORKING DAYS BEFORE DIGGING.



WLC

Architects

RANCHO CUCAMONGA - FOLSOM - EMERYVILLE

SOUTHERN CALIFORNIA
Virginia Dare Tower
10470 Foothill Boulevard
Rancho Cucamonga
California 91730-3754
tel: 909-987-0909
fax: 909-980-9980

SILVERADO HIGH NINTH GRADE CAMPUS
VICTOR VALLEY UNION HIGH SCHOOL DISTRICT
VICTORVILLE, CA

CONSULTANT

PBS 2100 East Route 66, Suite 101
Glendora, California 91740-0350
Tel: (626) 650-0350
Fax: (626) 650-0352
WWW.PBSENGINEERS.COM
Job No. 2005-061-00
Mechanical and Electrical Consulting Engineers

IDENTIFICATION STAMP
DIV. OF THE STATE ARCHITECT
OFFICE OF REGULATION SERVICES

APPL 04-107479
DATE FLS SS

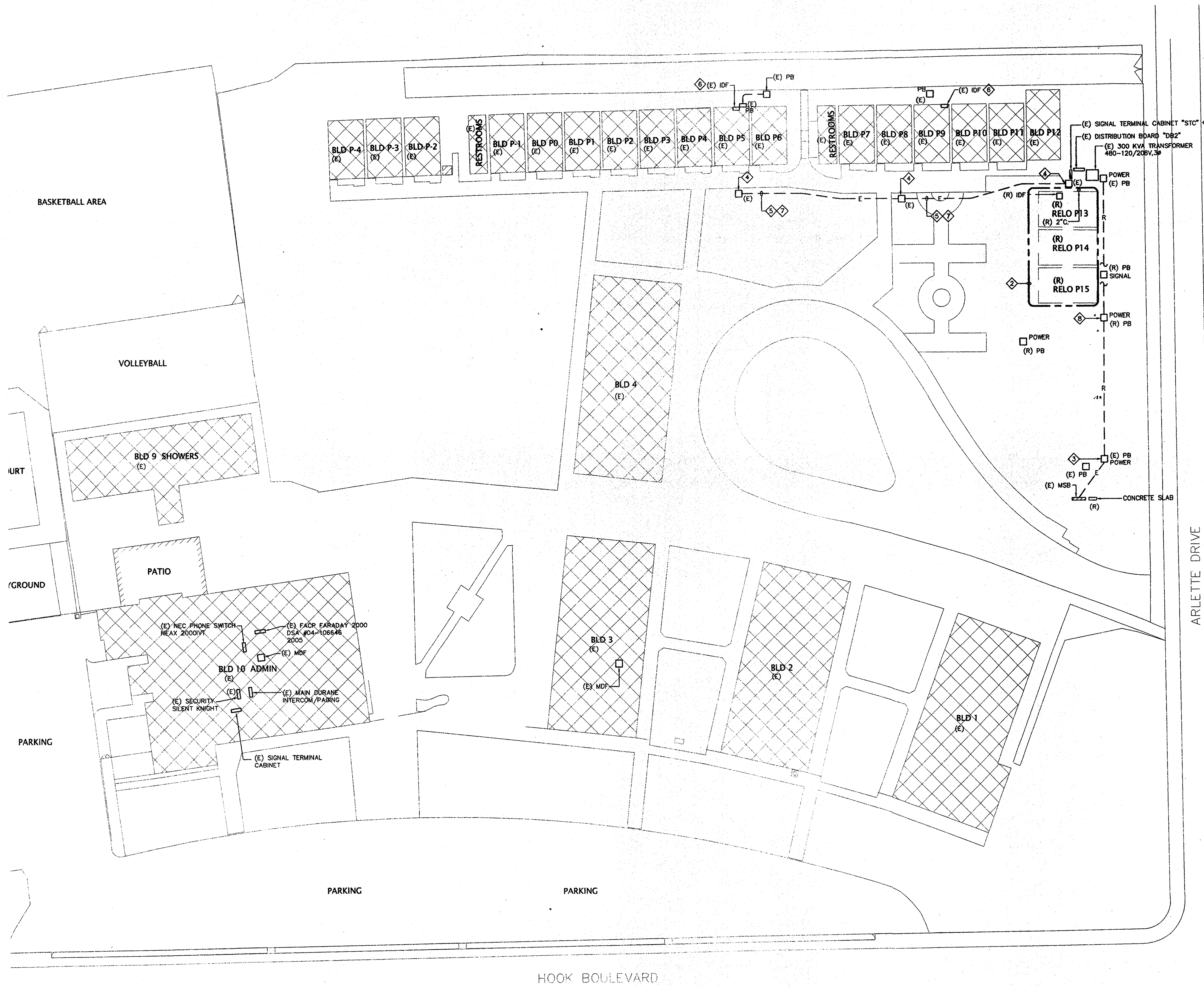
12/8/06 ADDENDUM 1
7/09 AS BUILT

NO.	DATE	BY	DESCRIPTION
REVISIONS			

DRAWN: C/VBM CHECKED: KS
DATE: SEPT 2005 SCALE: 1"=40'-0"
PROJECT NUMBER: 0421502

ELECTRICAL SITE PLAN

DRAWING NUMBER **E1.1**



KEY NOTES

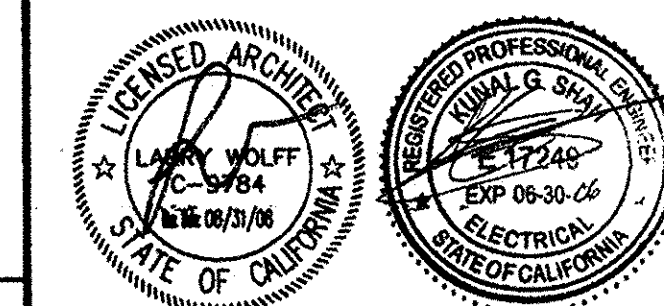
- PULL OUT, REMOVE AND DISCONNECT ALL RELATED EXISTING COMMUNICATION WIRES FROM EXISTING PORTABLE P13, P14 AND P15.
- REFER TO DEMOLITION NOTES BELOW.
- EXISTING UNDERGROUND CONCRETE PULLBOX FOR POWER TO REMAIN.
- EXISTING UNDERGROUND CONCRETE PULLBOX FOR SIGNAL TO REMAIN.
- EXISTING 2-4" COMMUNICATION CONDUIT. PULL OUT EXISTING DATA CABLE CONNECTION FROM P13 TO P5 AND P9. CONTRACTOR TO TRACE OUT RELATED EXISTING DATA CABLES NOT BEING USED AND REMOVE.
- CONTRACTOR TO TRACE OUT EXISTING CONDUIT AND PULL OUT DATA CABLE CONNECTION UP TO THIS EXISTING IDF.
- REMOVE EXISTING DATA CABLES IN EXISTING CONDUIT AND ALL RELATED WORK FROM P13 BACK TO P5. SEE NEW WORK ON SHEET E1.2.
- CONTRACTOR TO REMOVE EXISTING PULLBOX INCLUDING RELATED CONDUIT AND WIRINGS. SEE E2.1 FOR NEW SCOPE OF WORK.

DEMOLITION NOTES

- IN GENERAL, THE DEMOLITION PLAN SHOWS ALL EXISTING EQUIPMENT TO BE REMOVED; HOWEVER, ELECTRICAL EQUIPMENT, WHETHER SHOWN ON THIS DRAWINGS OR NOT THAT IS LOCATED IN REMOVED WALLS, FLOORS OR CEILINGS, SHALL BE REMOVED UNLESS OTHERWISE NOTED.
- THE CONTRACTOR SHALL VISIT THE SITE SPECIFICALLY INCLUDING ALL AREAS INDICATED ON THE DRAWINGS. HE SHALL THOROUGHLY FAMILIARIZE HIMSELF WITH THESE EXISTING CONDITIONS, AND BY SUBMITTING A BID ACCEPTS CONDITIONS UNDER WHICH HE WILL BE REQUIRED TO PERFORM HIS WORK.
- IT SHALL BE THE ELECTRICAL CONTRACTOR'S RESPONSIBILITY TO DISCONNECT AND REMOVE ALL EXISTING LIGHTING FIXTURES, RECEPTACLES, ELECTRICAL EQUIPMENT, ETC., AFFECTED BY THE REMODELED AREA. THIS WILL INCLUDE REROUTING, OR THE EXTENSION OF, EXISTING CONDUIT AND FEEDERS WHERE NECESSARY TO MAINTAIN THE CONTINUITY OF EXISTING EQUIPMENT REMAINING.
- ALL CIRCUIT NUMBERS AND EXISTING CONDUIT HOMERUNS SHOWN ON THESE DRAWINGS WERE TAKEN FROM EXISTING RECORD DRAWINGS. IT IS THIS CONTRACTOR'S RESPONSIBILITY TO VERIFY LOCATIONS OF HOMERUNS, AND ADJUST CIRCUIT NUMBERS ACCORDING TO EXISTING CONDITIONS IF REQUIRED.
- IT SHALL BE THE RESPONSIBILITY FOR THIS CONTRACTOR TO MAINTAIN CONTINUITY OF ALL ELECTRICAL SYSTEMS, EQUIPMENT, ETC., REMAINING IN OPERATION WHICH ARE BEING FED BY AN ABANDONED OUTLET. MAINTAINING CONTINUITY SHALL CONSIST OF REROUTING CONDUIT, WIRING, ETC., AS REQUIRED.
- EXISTING CIRCUITS WHICH ARE REMOVED AND NOT REUSED SHALL BE IDENTIFIED ON THE PANEL SCHEDULE AS "SPARE".
- THE ELECTRICAL CONTRACTOR SHALL COORDINATE WITH THE OWNER PRIOR TO REMOVAL OF EXISTING ELECTRICAL EQUIPMENT, AND TURN OVER REMOVED EQUIPMENT THAT THE OWNER REQUESTS IN AN "AS-FOUND" CONDITION. EQUIPMENT THAT IS TO BE TURNED OVER SHALL BE BOXED AND TAGGED TO IDENTIFY THE SPECIFIC EQUIPMENT.
- WHERE NEW CIRCUITS ARE SHOWN TO EXISTING MSB, INSTALL NEW BREAKERS (MINIMUM 20 AMP, SINGLE POLE) AS CALLED FOR ON DRAWINGS. IDENTIFY EACH NEW CIRCUIT ON PANEL SCHEDULE.
- EXISTING CONDUIT MAY BE REUSED IF ADEQUATELY SIZED.
- IN SOME INSTANCES, IT MAY BE NECESSARY FOR THE ELECTRICAL CONTRACTOR TO TEMPORARILY RELOCATE, REROUTE, ETC., EXISTING ELECTRICAL EQUIPMENT. THIS SHALL BE DONE SO THAT THE SYSTEMS IN ALL PHASES (THOSE COMPLETED AND THOSE YET TO BEGIN), ARE IN COMPLETE, OPERABLE, CONDITION AS CONSTRUCTION PROCEEDS THROUGH EACH PHASE.
- DURING EACH PHASE OF DEMOLITION, ALL CIRCUITS FROM EXISTING PANELS WHICH FEED AREAS OUTSIDE THE BOUNDARIES OF THAT PHASE, SHALL BE MAINTAINED.
- DRAWINGS DO NOT SHOW ALL EXISTING EQUIPMENT TO REMAIN. WHERE EXISTING PANEL IS REPLACED WITH NEW PANEL, CONTRACTOR SHALL BE RESPONSIBLE FOR RECONNECTION OF ALL EXISTING CIRCUITS TO REMAIN TO NEW PANELS, THIS INCLUDE REROUTING AND EXTENDING EXISTING CIRCUITS AS NECESSARY TO MAINTAIN CIRCUIT CONTINUITY FOR EXISTING DEVICES AND EQUIPMENT, WHETHER OR NOT SHOWN ON THE FLOOR PLAN OR PANEL SCHEDULES. INCLUDE SUCH COST IN BID.

WLC
Architects
RANCHO CUCAMONGA - FOLSOM - EMERYVILLE
SOUTHERN CALIFORNIA
Virginia Dare Tower
10470 Foothill Boulevard
Rancho Cucamonga
California 91730-3754
tel: 909-987-0909
fax: 909-980-9980

HOOK JUNIOR HIGH SCHOOL ADDITION
VICTOR VALLEY UNION HIGH SCHOOL DISTRICT
15000 HOOK BOULEVARD
VICTORVILLE, CALIFORNIA



CONSULTANT
PBS 2100 East Route 66, Suite 101
Glendora, California 91740-4671
Tel: (626) 650-0350
Fax: (626) 650-0352
WWW.PBSENGINEERS.COM
Job No. 2005-062-00
Mechanical and Electrical Consulting Engineers

IDENTIFICATION STAMP
DIV. OF THE STATE ARCHITECT
OFFICE OF REGULATION SERVICES
APPL 04-107389
AC - PLS
DATE: JAN 1 2006

NO	DATE	BY	DESCRIPTION

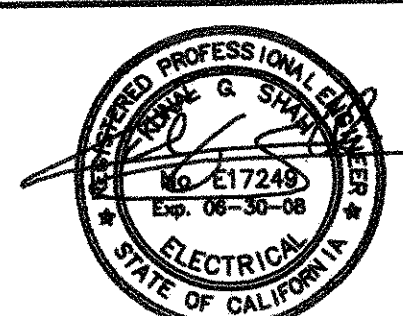
DRAWN: C.V.B.M. CHECKED: W.D.
DATE: AUGUST 2005 SCALE: 1"=30'-0"
PROJECT NUMBER: 0421501

**ELECTRICAL
DEMOLITION
SITE PLAN**
DRAWING
NUMBER: **E1.1**



SOUTHERN CALIFORNIA
Virginia Dare Tower
10470 Foothill Boulevard
Rancho Cucamonga
California 91730-3754
tel: 909-987-0909
fax: 909-980-9980

NEW VICTOR VALLEY JUNIOR HIGH SCHOOL
VICTOR VALLEY UNION HIGH SCHOOL DISTRICT
VICTORVILLE, CA



CONSULTANT

PBS 2100 East Route 86, Suite 101
Gardena, California 91740-0350
Tel: (826) 550-0350
Fax: (826) 550-0352
WWW.PBSENGINEERS.COM
Job No. 2005-060-00
Mechanical and Electrical Consulting Engineers

KEY NOTES

- ① (2) 4" CONDUIT ONLY WITH PULL LINE TO TELEPHONE COMPANY POINT OF CONNECTION. VERIFY EXACT REQUIREMENTS WITH TELEPHONE COMPANY.
- ② (2) 2" CONDUIT ONLY (PVC-SCHED. 40) WITH PULL LINE TO CABLE TV COMPANY POINT OF CONNECTION. VERIFY EXACT REQUIREMENTS WITH CABLE TV COMPANY.
- ③ 3"x5"x4" UNDERGROUND CONCRETE PULLBOX WITH BOLT DOWN TRAFFIC COVER ENGRAVED "SIGNAL".
- ④ 2"x3"x4" UNDERGROUND CONCRETE PULLBOX WITH BOLT DOWN TRAFFIC COVER ENGRAVED "SIGNAL".
- ⑤ 2"x3"x4" DEPTH UNDERGROUND CONCRETE PULL BOX WITH BOLT DOWN TRAFFIC COVER ENGRAVED "SIGNAL".
- ⑥ REFER TO SIGNAL AND FIRE ALARM FLOOR PLAN FOR EXACT LOCATION.
- ⑦ 3/4" C. CONDUCTOR AS REQUIRED.
- ⑧ EXISTING POLE AT PROPERTY LINE NEAR SPRING VALLEY PARK WAY STREET. VERIFY CONDUIT ROUTINGS AND EXACT CABLE TV POINT OF CONNECTION.
- ⑨ 2"x3"x4" UNDERGROUND CONCRETE PULL BOX WITH BOLT DOWN TRAFFIC COVER ENGRAVED "CATV".
- ⑩ 2"x3"x4" UNDERGROUND CONCRETE PULL BOX WITH BOLT DOWN TRAFFIC COVER ENGRAVED "SIGNAL".
- ⑪ SIGNAL CONDUITS TO FIELD AREA FOR FUTURE.
 - (1) 1" C.O. W/ PULL WIRE (FIRE ALARM)
 - (1) 1" C.O. W/ PULL WIRE (SMS)
 - (1) 2" C.O. W/ PULL WIRE (PA/IC)
 - (1) 2" C.O. W/ PULL WIRE (SEC)
 - (1) 2" C.O. W/ PULL WIRE (CATV)
 - (1) 2" C.O. W/ PULL WIRE (CCTV)
 - (2) 2" C.O. W/ PULL WIRE (SPARE)
- ⑫ W.P. PULL BOX 12"x48"x6"D. PROVIDE UNISTRUT SUPPORT AS REQUIRED.

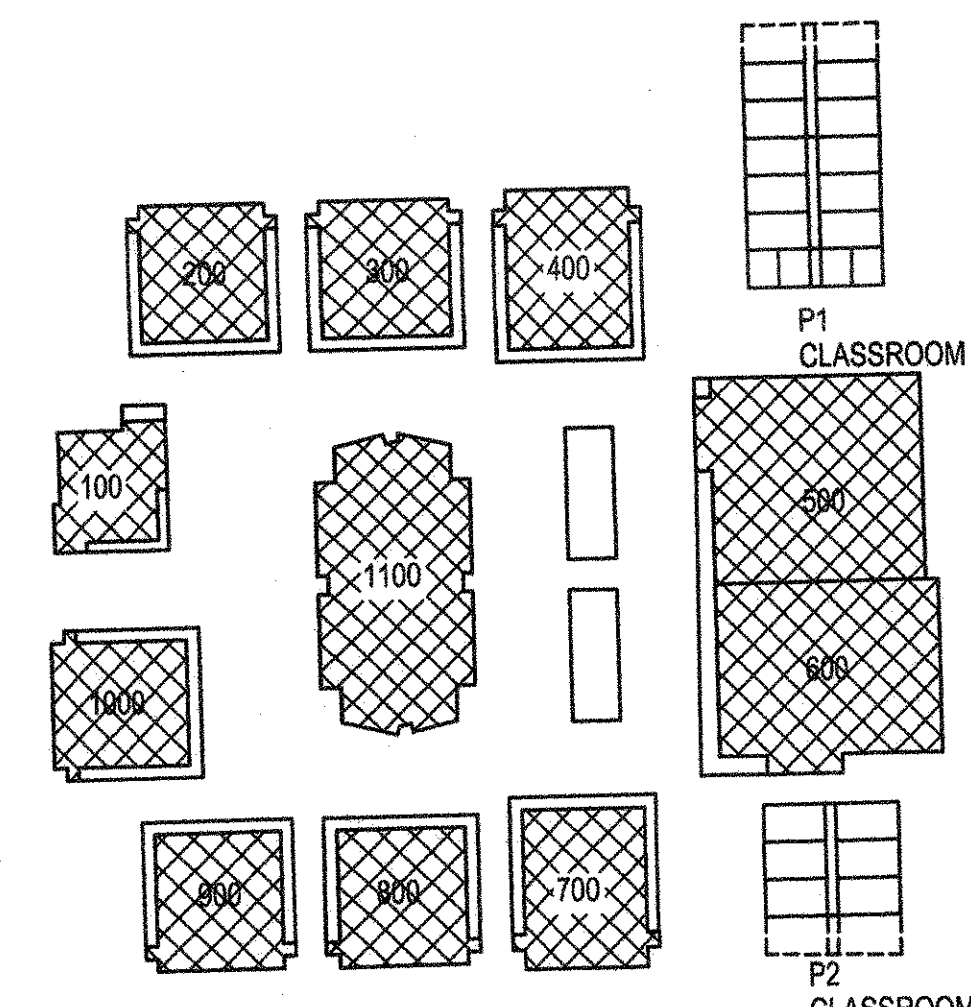
UTILITY CONTACT

VERIZON TELEPHONE COMPANY
DAVE RIDDELL-SERVICE PLANNER ENGINEER.
PHONE: 760-245-0894
ADDRESS: 18071 MOJAVE DR. BLDG. A
VICTORVILLE, CA 92392

CHARTER COMMUNICATIONS CABLE COMPANY
JOE BERTOLA-SERVICE PLANNER ENGINEER.
PHONE: 760-843-3054
ADDRESS: 12400 BUSINESS CENTER DR.
VICTORVILLE, CA 92392

020# 114 - ADD CTV FOR SECURITY - SEE LOG.

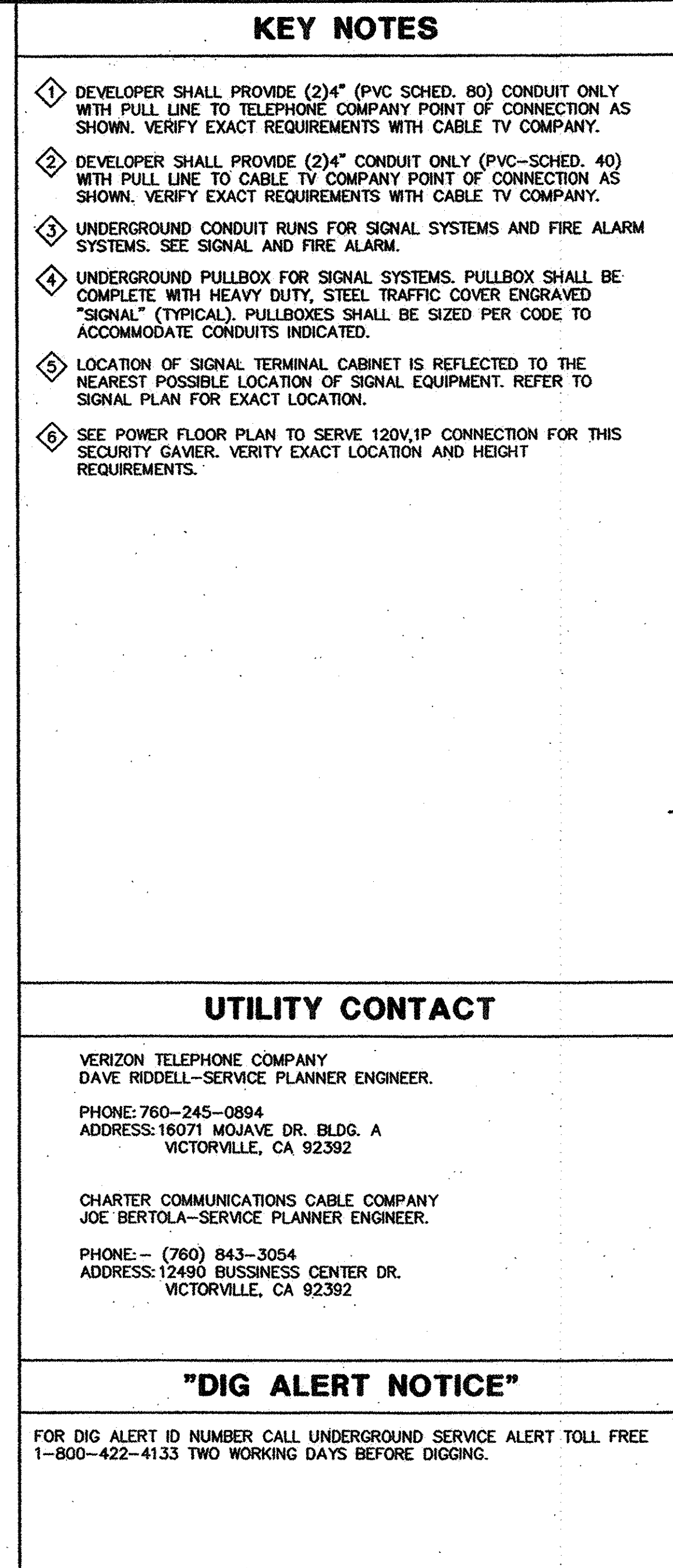
AS BUILTS



COMMUNICATIONS DUCT BANK SCHEDULE				CONDUIT BREAKDOWN											
CONDUIT SEGMENT NAME	FROM	TO	TOTAL NUMBER OF CONDUITS	4"	3"	2"	FIBER CONDUITS W/ 1 1/4" INNERDUCTS EA. F2 SPARE	COPPER C1 C2 C3	SPARE S	FIRE ALARM FA	GROUND G	PA C	SEC I	CATV TV	BLDG. AUTO AU
(A) MDF-STC-H1	MHT-1	MHT-1	7	-	4	-	4"	-	-	4" 2"(24)IPR#16	2"	2"	4"	2"	4"
(B) MHT-1	MHT-2	MHT-2	7	-	4	-	4"	-	-	4" 2"(12)IPR#16	2"	2"	4"	2"	4"
(C) MHT-2	MHT-4	MHT-4	7	-	4	-	4"	-	-	4" 2"(8)IPR#16	2"	2"	4"	2"	4"
(D) MHT-4	MHT-5	MHT-5	7	-	4	-	4"	-	-	4" 2"(4)IPR#16	2"	2"	4"	2"	4"
(E) MHT-2	MHT-3	MHT-3	-	7	4	-	3"	-	3"	2" 2"(4)IPR#16	2"	2"	3"	2"	3"
(F) STC-A3, IDF-A3	MHT-3	MHT-3	-	2	9	-	3"	-	3"	2" 2"(2)IPR#16	2"	2"	2"	2"	2"
(G) STC-A2, IDF-A2	MHT-3	MHT-3	-	2	9	-	3"	-	3"	2" 2"(2)IPR#16	2"	2"	2"	2"	2"
(H) STC-F4, IDF-F4	MHT-4	MHT-4	-	2	9	-	3"	-	3"	2" 2"(2)IPR#16	2"	2"	2"	2"	2"
(I) STC-P1, IDF-P1	MHT-4	MHT-4	-	2	9	-	3"	-	3"	2" 2"(2)IPR#16	2"	2"	2"	2"	2"
(J) MHT-5	STC-K5, IDF-K5	MHT-5	-	2	9	-	3"	-	3"	2" 2"(2)IPR#16	2"	2"	2"	2"	2"
(K) MHT-5	STC-L6, IDF-L6	MHT-5	-	2	9	-	3"	-	3"	2" 2"(2)IPR#16	2"	2"	2"	2"	2"
(L) MHT-1	MHT-6	MHT-6	7	-	4	-	4"	-	-	4" 2"(12)IPR#16	2"	2"	4"	2"	4"
(M) MHT-6	MHT-7	MHT-7	7	-	4	-	4"	-	-	4" 2"(8)IPR#16	2"	2"	4"	2"	4"
(N) MHT-9	MHT-7	MHT-7	7	-	4	-	4"	-	-	4" 2"(4)IPR#16	2"	2"	4"	2"	4"
(O) STC-A10, IDF-A10	MHT-6	MHT-6	-	7	9	-	3"	-	3"	2" 2"(2)IPR#16	2"	2"	2"	2"	2"
(P) STC-J11, IDF-J11	MHT-7	MHT-7	-	2	9	-	3"	-	3"	2" 2"(2)IPR#16	2"	2"	2"	2"	2"
(Q) MHT-8	MHT-7	MHT-7	-	7	4	-	3"	-	3"	2" 2"(4)IPR#16	2"	2"	3"	2"	3"
(R) STC-A8, IDF-A8	MHT-8	MHT-8	-	2	9	-	3"	-	3"	2" 2"(2)IPR#16	2"	2"	2"	2"	2"
(S) STC-A9, IDF-A9	MHT-8	MHT-8	-	2	9	-	3"	-	3"	2" 2"(2)IPR#16	2"	2"	2"	2"	2"
(T) STC-P2, IDF-P2	MHT-9	MHT-9	-	2	9	-	3"	-	3"	2" 2"(2)IPR#16	2"	2"	2"	2"	2"
(U) STC-F7, IDF-F7	MHT-9	MHT-9	-	2	9	-	3"	-	3"	2" 2"(2)IPR#16	2"	2"	2"	2"	2"

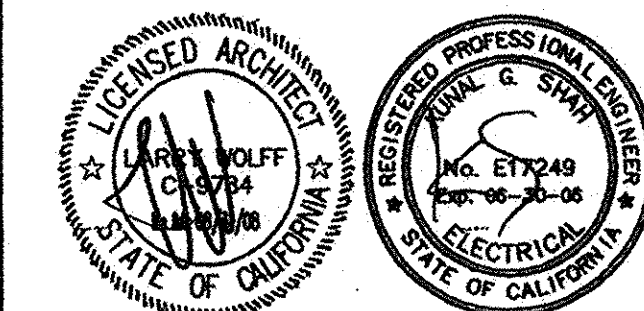
NOTE: FOR NUMBER OF CONDUCTOR AND SIZE, REFER TO SIGNAL RISER DIAGRAM AND FIRE ALARM RISER DIAGRAM.

RFI = 09-06
Pod type A requires (2) 3" conduits for the fiber optic backbone cable related to the Data Infrastructure.



COMMUNICATIONS DUCT BANK SCHEDULE						CONDUIT BREAKDOWN														
CONDUIT SEGMENT NAME	FROM	TO	TOTAL NUMBER OF CONDUITS		FIBER CONDUITS W/3 1 1/4" INNERDUCTS EA.			COPPER			SPARE	FIRE ALARM	GROUND		PA	SEC	CATV	BLDG. AUTO		
			4"	3"	4"	F1	F2	F3	C1	C2	C3	S	FA	G	G		I	TV	AU	
(A)	MDF	MHT-1	5	-	5	4"	-	-	4"	-	-	4"	2"	2"	2"		2"	2"	4"	4"
(B)	MHT-1	MHT-2	5	-	5	4"	-	-	4"	-	-	4"	2"	2"	2"		2"	2"	4"	4"
(C)	MHT-2	MHT-3	5	-	5	4"	-	-	4"	-	-	4"	2"	2"	2"		2"	2"	4"	4"
(D)	MHT-4	MHT-3	5	-	5	2"	-	-	4"	-	-	4"	2"	2"	2"		2"	2"	4"	4"
(E)	MHT-5	MHT-3	5	-	5	4"	-	-	4"	-	-	4"	2"	2"	2"		2"	2"	4"	4"
(F)	IDF-C8	MHT-5	5	-	4	2"	-	-	4"	-	-	4"	2"	2"			2"	2"	4"	4"
(G)	MHT-6	MHT-5	5	-	5	4"	-	-	4"	-	-	4"	2"	2"	2"		2"	2"	4"	4"
(H)	IDF-P2	MHT-6	5	-	4	2"	-	-	4"	-	-	4"	2"	2"			2"	2"	4"	4"
(I)	MHT-7	MHT-2	5	-	5	4"	-	-	4"	-	-	4"	2"	2"	2		2"	2"	4"	4"
(J)	MHT-9	MHT-7	5	-	5	4"	-	-	4"	-	-	4"	2"	2"			2"	2"	4"	4"
(K)	IDF-Jg2	MHT-7	5	-	4	2"	-	-	4"	-	-	4"	2"	2"	2		2"	2"	4"	4"
(L)	MHT-8	MHT-7	5	-	5	2"	-	-	4"	-	-	4"	2"	2"	2		2"	2"	4"	4"
(M)	MHT-10	MHT-9	5	-	5	2"	-	-	4"	-	-	4"	2"	2"	2		2"	2"	4"	4"
(N)	FUT	MHT-10	5	-	4	2"	-	-	4"	-	-	4"	2"	2"			2"	2"	4"	4"
(O)	IDF-E4	MHT-10	5	-	4	2"	-	-	4"	-	-	4"	2"	2"			2"	2"	4"	4"
(P)	FUT	MHT-9	5	-	4	2"	-	-	4"	-	-	4"	2"	2"			2"	2"	4"	4"
(Q)	FUT	MHT-6	5	-	4	4"	-	-	4"	-	-	4"	2"	2"			2"	2"	4"	4"
(R)	IDF-B7	MHT-6	5	-	4	2"	-	-	4"	-	-	4"	2"	2"			2"	2"	4"	4"
(S)	MHT-11	MHT-9	4	-	4	2"	-	-	4"	-	-	4"	2"	2"	2		2"	2"	4"	4"
(T)	MSB	MHT-11	4	-	6	2"	-	-	4"	-	-	4"	2"	2"	2"		2"	2"	4"	4"

GOODWILL EDUCATION CENTER
VICTOR VALLEY UNION HIGH SCHOOL DISTRICT
13853 SENECA ROAD
VICTORVILLE, CA

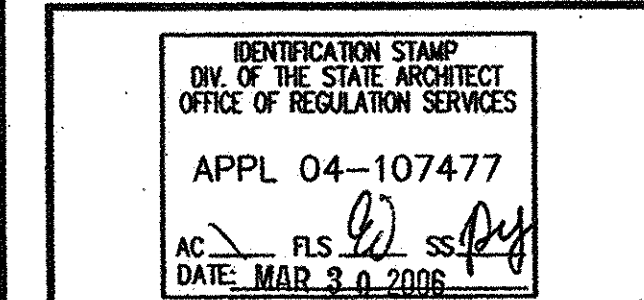


CONSULTANT

PBS
B
ENGINEERS

2100 East Route 66, Suite 101
Glendora, California 91740-0350
Tel: (626) 650-0350
Fax: (626) 650-0352
WWW.PBSENGINEERS.COM
Job No. 2005-063-00

Mechanical and Electrical Consulting Engineers



△			
△			
△			
△			
△			
△			
NO	DATE	BY	DESCRIPTION
REVISIONS			

DRAWN BY	CHECKED: KS
DATE: MARCH, 2006	SCALE: 1"=40'-0"
PROJECT NUMBER: 0421500	

SIGNAL SITE PLAN

DRAWING NUMBER: **E1.3**

