

LEA Name : Haverford Township SD  
Address : 50 East Eagle Road  
Havertown , PA 19083

County : Delaware  
AUN Number : 125234502  
LEA Type : SD

## Annual Financial Report Accuracy Certification Statement

For Fiscal Year Ending

6/30/2021

Pennsylvania Department of Education

&

Office of Comptroller Operations

PDE-2056: Intermediate Unit

PDE-2057: School District, AVTS/CTC, Charter School,  
and Special Program Jointure

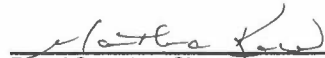
**CERTIFICATION: By signing this page I agree that the electronic data submitted is a complete and accurate statement of the financial operations and status of the local education agency for the fiscal year. It has been prepared in accordance with generally accepted accounting principles and established Commonwealth of PA reporting guidelines.**



Chief School Administrator Signature

12/30/2021

Date



Board Secretary Signature

12/30/2021

Date

Kelly Kaiser

Contact Person

kkaiser@haverfordsd.net

Contact Person E-mail Address

(610)853-5900

Ext :

Contact Person Telephone Number

Contact Person Fax Number

**Audit Certification**  
**Annual Financial Report:**  
**For Fiscal Year Ending 6/30/2021**  
**(Pursuant to PA School Code Section 218(b))**

LEA Name : Haverford Township SD  
AUN Number : 125234502  
County : Delaware

<b>Audit Certification Due:</b> 12/31/2021
---

This certification is applicable to the Annual Financial Report data submitted through the Consolidated Financial Reporting System (CFRS).

CERTIFICATION: By signing this page I agree that the financial statements of the school have been properly audited as noted above pursuant to Article XXIV, and in the auditor's professional opinion, the Annual Financial Report (PDE-2057) submitted through CFRS is materially consistent with the audited financial statements.

Chief School Administrator

Maureen Reuschle  
Signature

12/30/2021  
Date

Board Secretary

[Signature]  
Signature

12/30/2021  
Date

Kelly Kaiser

\_\_\_\_\_  
Contact Person

kkaiser@haverfordsd.net

\_\_\_\_\_  
Contact Person E-mail Address

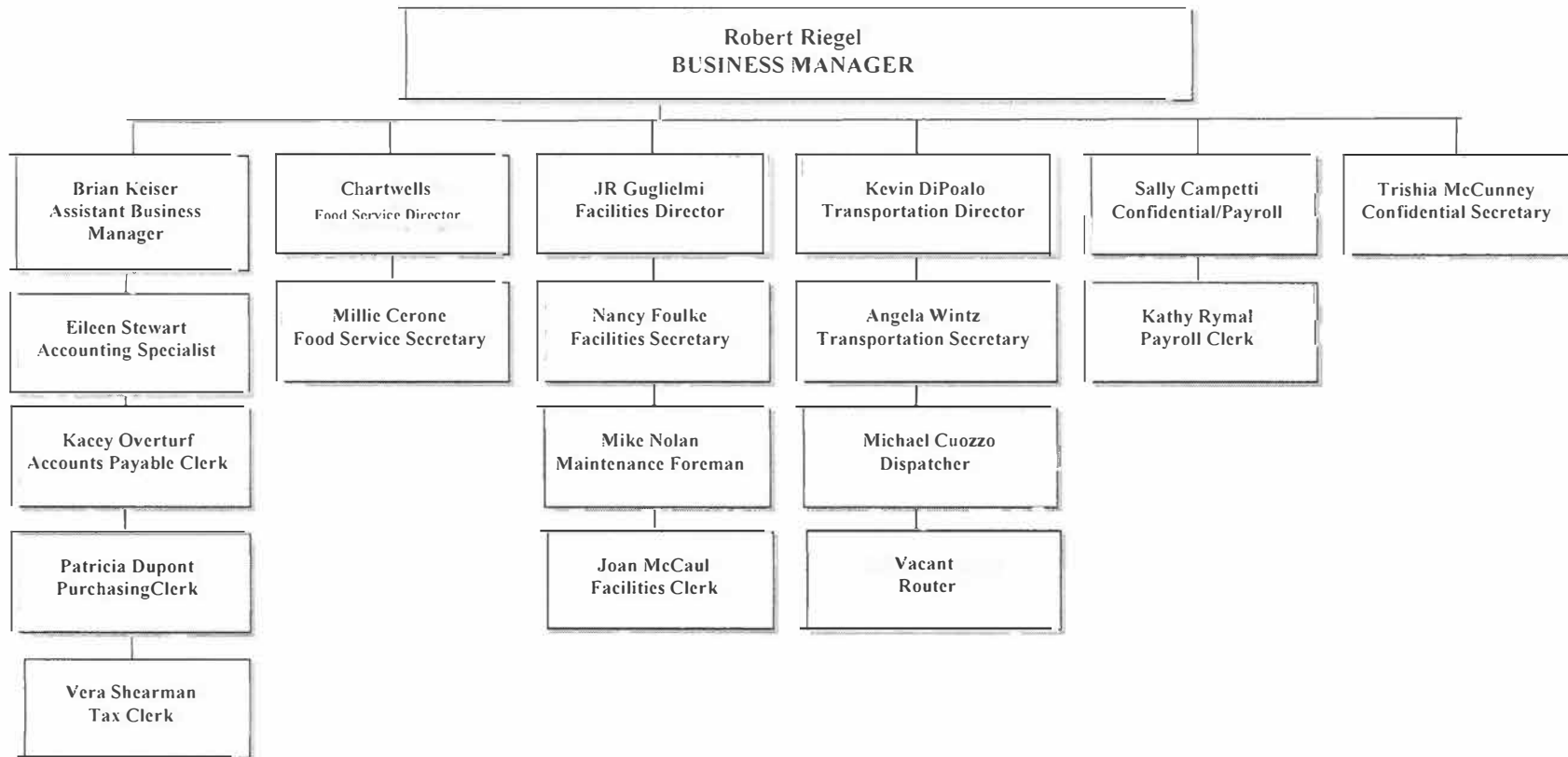
(610)853-5900

Ext : \_\_\_\_\_

\_\_\_\_\_  
Contact Person Telephone Number

\_\_\_\_\_  
Contact Person Fax Number

**SCHOOL DISTRICT OF HAVERFORD TOWNSHIP**  
**Organizational Chart 2020-21 School Year**



As of June 2021



Book	Policy Manual
Section	700 Property
Title	Property Records
Code	706
Status	Active
Adopted	August 16, 2010

**Purpose**

The Board directs that adequate property records and inventory records be maintained on all land, buildings and physical property under the control of the district.

**Authority**

The Board directs that a complete inventory be maintained by physical count of all district-owned equipment. It further directs that property records be maintained of all buildings and grounds under the control of the district.

**Definition**

For purposes of this policy, **equipment** shall mean a unit of furniture or furnishings, an instrument, a machine, an apparatus or a set of articles which retains its shape and appearance with use, is nonexpendable, and does not lose its identity when incorporated into a more complex unit.

**Replacement**

All district equipment shall be placed on a replacement schedule as soon as feasible. The Superintendent shall include in his/her recommended budget funds to maintain the replacement schedule.

Requests for replacement of equipment shall be submitted by principals and other supervisors in March, on regular budget request forms. Replacement of equipment, other than approved in the adopted budget, shall be considered in an emergency situation only.

**Transfer and Disposal**

The Business Manager will develop procedures to ensure that, when property or equipment is transferred from one location to another, the permanent inventory file will reflect said transfer.

The Business Manager shall develop procedures for disposing of obsolete and unused equipment, including the elimination.

**Inventories**

The Business Manager shall develop procedures for conducting periodic inventories of school property, and maintain a system that accurately reflects the movement of the equipment.

<u>Val Number</u>	<u>Description</u>	<u>Justification</u>
12195	<p>REG: Current Year AFR Beginning Fund Balance must equal Prior Year AFR Ending Fund Balance. Justifications to this error must fully explain the situation that prompted a fund balance restatement. "Auditor Adjustment" is not a sufficient justification.</p> <p>Total Govt Funds, Beg Bal: \$45,961,348.00 PY Ending Bal, Govt Funds: \$45,761,211.00</p>	<p>This variance is due to moving a portion of Student Activities that do not qualify as a custodial activity from fiduciary to special revenue in fund 21.</p>
16050	<p>REP Fund 51: Food service operating expenses are reported on the REP, but no revenue is reported in code 6600 representing receipts from students/adults for purchased food. Correct, or verify that all food is served free of charge to everyone at the school.</p> <p>REP, Fund 51, Food Service Revenue 6600: \$0.00 REP, Fund 51, Operating Exp (total): \$1,322,568.00</p>	<p>The District participated in the Seamless Summer Option (SSO) for the 20-21 school year due to COVID-19.</p>
30501	<p>Revenue Detail: AFR amount must equal PDE FAI system amount.</p> <p>7311, AFR Rev Detail: \$712,617.86 7311, PDE FAI System: \$793,657.86</p>	<p>Prior year accrual was reversed in 20-21 to correct for prior year entry.</p>
42420	<p>Expenditure Detail: Total current year 2700-513 expenditure varies from prior year by 10%. Correct the data or enter a justification.</p> <p>2700-513, AFR Exp Detail: \$12,795.00 2700-513, PY AFR Amount: \$6,544.00</p>	<p>Costs for Transportation of Special Needs student to an alternate service location.</p>
50118	<p>SOIN: Reductions/Retirements have been reported for General Obligation Bonds, Authority Building Obligations and Other Long Term Debt however, comparable entries have not been reported in Governmental Fund Expenditure Functions 5110 &amp; 5120, Objects 910 and 920. Please correct or provide a justification.</p> <p>SOIN: GOB, ABO, and Other Long Term Debt Retirements/Repayments: \$22,495,388.00 Governmental Funds Expenditure Detail: Function 5110/5120, Object 910/920: \$19,770,000.00</p>	<p>Other long-term debt does not have a corresponding expenditure detail because it is a SWAP and is recorded only on the government-wide statement.</p>
50160	<p>SOIN: All Governmental Fund General Obligation Bonds must include an amount for Interest Paid during Fiscal Year. Correct data or enter a justification.</p>	<p>GOB 2021 A and GOB 2021 B were issued late in the fiscal year and no interest was due in the 20-21 year on these bonds.</p>
50410	<p>SESS - 2140 Psychological Services: SESS Schedule amounts for Special Education vary from prior year by 40% or more. Correct the data or enter a justification.</p> <p>SESS Schedule 2140: \$569,047.90 Prior Year SESS Schedule 2140: \$14,814.38</p>	<p>Increase in services in this area resulting in increased costs.</p>



LEA : 125234502     Haverford Township SD

Printed 1/4/2022 9:15:54 AM

Amounts Expressed in Whole Dollars		<u>General Fund</u> <u>(10)</u>	<u>Student Sponsored</u> <u>Activity Fund</u> <u>(21)</u>	<u>Public Purpose Trust</u> <u>(27)</u>	<u>Other Compt Approved</u> <u>(28)</u>	<u>Athletic / Activity</u> <u>(29)</u>
<b>Assets And Deferred Outflows Of Resources</b>						
<b>Assets</b>						
0100	Cash and Cash Equivalents	29,643,288	176,119			
0110	Investments					
0120	Taxes Receivable	1,884,317				
0130	Due From Other Funds	966,908				
0141	Due From Other Governments	5,054,252				
0142	State Revenue Receivable					
0143	Federal Revenue Receivable					
0145	Other Intergovernmental Revenue Receivable					
0146	Due from Primary Government					
0147	Due from Component Unit					
0150	Other Receivables	593,128				
0170	Inventories					
0180	Prepaid Expenses (Expenditures)	796,988				
0190	Other Current Assets					
<b>Total Assets</b>		<b>\$38,938,881</b>	<b>\$176,119</b>			
0910	Deferred Outflows of Resources					
<b>Total Assets And Deferred Outflows Of Resources</b>		<b>\$38,938,881</b>	<b>\$176,119</b>			

LEA : 125234502     Haverford Township SD

Printed 1/4/2022 9:15:54 AM

Amounts Expressed in Whole Dollars		<u>Capital Reserve (690.</u> <u>1850)</u> <u>(31)</u>	<u>Capital Reserve (1431)</u> <u>(32)</u>	<u>Other Capital Projects</u> <u>Fund</u> <u>(39)</u>	<u>Debt Service</u> <u>(40)</u>	<u>Permanent</u> <u>(90)</u>
<b>Assets And Deferred Outflows Of Resources</b>						
<b>Assets</b>						
0100	Cash and Cash Equivalents			21,036,477		
0110	Investments					
0120	Taxes Receivable					
0130	Due From Other Funds					
0141	Due From Other Governments					
0142	State Revenue Receivable					
0143	Federal Revenue Receivable					
0145	Other Intergovernmental Revenue Receivable					
0146	Due from Primary Government					
0147	Due from Component Unit					
0150	Other Receivables					
0170	Inventories					
0180	Prepaid Expenses (Expenditures)					
0190	Other Current Assets					
<b>Total Assets</b>				<b>\$21,036,477</b>		
0910	Deferred Outflows of Resources					
<b>Total Assets And Deferred Outflows Of Resources</b>				<b>\$21,036,477</b>		



LEA : 125234502     Haverford Township SD

Printed 1/4/2022 9:15:54 AM

Amounts Expressed in Whole Dollars		<u>Total Governmental</u> <u>Funds</u>
<b>Assets And Deferred Outflows Of Resources</b>		
<b>Assets</b>		
0100 Cash and Cash Equivalents	50,855,884	
0110 Investments		
0120 Taxes Receivable	1,884,317	
0130 Due From Other Funds	966,908	
0141 Due From Other Governments	5,054,252	
0142 State Revenue Receivable		
0143 Federal Revenue Receivable		
0145 Other Intergovernmental Revenue Receivable		
0146 Due from Primary Government		
0147 Due from Component Unit		
0150 Other Receivables	593,128	
0170 Inventories		
0180 Prepaid Expenses (Expenditures)	796,988	
0190 Other Current Assets		
<b>Total Assets</b>	<b>\$60,151,477</b>	
0910 Deferred Outflows of Resources		
<b>Total Assets And Deferred Outflows Of Resources</b>	<b>\$60,151,477</b>	

LEA : 125234502     Haverford Township SD

Printed 1/4/2022 9:15:54 AM

Amounts Expressed in Whole Dollars	<u>General Fund</u> <u>(10)</u>	<u>Student Sponsored</u> <u>Activity Fund</u> <u>(21)</u>	<u>Public Purpose Trust</u> <u>(27)</u>	<u>Other Compt Approved</u> <u>(28)</u>	<u>Athletic / Activity</u> <u>(29)</u>
<b>Liabilities And Deferred Inflows Of Resources And Fund Balances</b>					
<b>Liabilities</b>					
0400 Due to Other Funds					
0411 Due to Other Governments					
0412 Due to Primary Government					
0413 Due to Component Unit					
0420 Accounts Payable	1,200,805				
0430 Contracts Payable					
0440 Current Portion of Long-Term Debt					
0450 Short-Term Payables					
0461 Accrued Salaries and Benefits	15,431,973				
0462 Payroll Deductions and Withholding					
0480 Unearned Revenues					
0490 Other Current Liabilities					
<b>Total Liabilities</b>	<b>\$16,632,778</b>				
0950 Deferred Inflows of Resources	1,427,539				
<b>Fund Balances</b>					
0810 Nonspendable Fund Balance	796,988				
0820 Restricted Fund Balance					
0830 Committed Fund Balance		176,119			
0840 Assigned Fund Balance					
0850 Unassigned Fund Balance	20,081,576				
<b>Total Fund Balances</b>	<b>\$20,878,564</b>	<b>\$176,119</b>			
<b>Total Liabilities, Deferred Inflows Of Resources And Fund Balances</b>	<b>\$38,938,881</b>	<b>\$176,119</b>			

LEA : 125234502     Haverford Township SD

Printed 1/4/2022 9:15:54 AM

Amounts Expressed in Whole Dollars		<u>Capital Reserve (690.</u> <u>1850)</u> <u>(31)</u>	<u>Capital Reserve (1431)</u> <u>(32)</u>	<u>Other Capital Projects</u> <u>Fund</u> <u>(39)</u>	<u>Debt Service</u> <u>(40)</u>	<u>Permanent</u> <u>(90)</u>
<b>Liabilities And Deferred Inflows Of Resources And Fund Balances</b>						
<b>Liabilities</b>						
0400	Due to Other Funds			173,135		
0411	Due to Other Governments					
0412	Due to Primary Government					
0413	Due to Component Unit					
0420	Accounts Payable			2,562,426		
0430	Contracts Payable					
0440	Current Portion of Long-Term Debt					
0450	Short-Term Payables					
0461	Accrued Salaries and Benefits					
0462	Payroll Deductions and Withholding					
0480	Unearned Revenues					
0490	Other Current Liabilities					
<b>Total Liabilities</b>				<b>\$2,735,561</b>		
0950	Deferred Inflows of Resources					
<b>Fund Balances</b>						
0810	Nonspendable Fund Balance					
0820	Restricted Fund Balance					
0830	Committed Fund Balance			18,300,916		
0840	Assigned Fund Balance					
0850	Unassigned Fund Balance					
<b>Total Fund Balances</b>				<b>\$18,300,916</b>		
<b>Total Liabilities, Deferred Inflows Of Resources And Fund Balances</b>				<b>\$21,036,477</b>		

LEA : 125234502     Haverford Township SD

Printed 1/4/2022 9:15:54 AM

Amounts Expressed in Whole Dollars		<u>Total Governmental</u> <u>Funds</u>
<b>Liabilities And Deferred Inflows Of Resources And Fund Balances</b>		
<b>Liabilities</b>		
0400 Due to Other Funds		173,135
0411 Due to Other Governments		
0412 Due to Primary Government		
0413 Due to Component Unit		
0420 Accounts Payable		3,763,231
0430 Contracts Payable		
0440 Current Portion of Long-Term Debt		
0450 Short-Term Payables		
0461 Accrued Salaries and Benefits		15,431,973
0462 Payroll Deductions and Withholding		
0480 Unearned Revenues		
0490 Other Current Liabilities		
<b>Total Liabilities</b>		<b>\$19,368,339</b>
0950 Deferred Inflows of Resources		1,427,539
<b>Fund Balances</b>		
0810 Nonspendable Fund Balance		796,988
0820 Restricted Fund Balance		
0830 Committed Fund Balance		18,477,035
0840 Assigned Fund Balance		
0850 Unassigned Fund Balance		20,081,576
<b>Total Fund Balances</b>		<b>\$39,355,599</b>
<b>Total Liabilities, Deferred Inflows Of Resources And Fund Balances</b>		<b>\$60,151,477</b>

Amounts Expressed in Whole Dollars	<u>General Fund</u> <u>(10)</u>	<u>Student Sponsored</u> <u>Activity Fund</u> <u>(21)</u>	<u>Public Purpose Trust</u> <u>(27)</u>	<u>Other Compt Approved</u> <u>(28)</u>	<u>Athletic / Activity</u> <u>(29)</u>
<b>Revenues</b>					
6000 Revenue from Local Sources	107,961,639	32,881			
7000 Revenue from State Sources	22,190,578				
8000 Revenue from Federal Sources	1,054,755				
<b>Total Revenues</b>	<b>\$131,206,972</b>	<b>\$32,881</b>			
<b>Expenditures</b>					
1000 Instruction	78,898,919				
2000 Support Services	35,905,267				
3000 Operation of Non-Instructional Services	1,459,169	56,900			
4000 Facilities Acquisition, Construction and Improvement Services					
5110 Debt Service	10,908,203				
5130 Refund of Prior Year Revenues / Receipts					
<b>Total Expenditures</b>	<b>\$127,171,558</b>	<b>\$56,900</b>			
<b>Excess (Deficiency) Of Revenues Over Expenditures</b>	<b>\$4,035,414</b>	<b>(\$24,019)</b>			
<b>Other Financing Sources (Uses)</b>					
9110 Face Value of Bonds Issued					
9120 Proceeds from Refunding of Bonds					
9130 Bond Premiums					
9200 Proceeds from Extended-Term Financing					
9300 Interfund Transfers - IN					
9400 Sale of or Compensation for Loss of Fixed Assets					
9710 Transfers from Component Units					
9720 Transfers from Primary Governments					
9910 Other Financing Sources Not Listed in the 9000 Series					
9990 Insurance Recoveries					
5120 Debt Service – Refunded Bonds					
5150 Bond Discounts					
5200 Interfund Transfers – Out	870,909				
5300 Transfers Out to Component Units/Primary Governments					
<b>Total Other Financing Sources (Uses)</b>	<b>(\$870,909)</b>				

Amounts Expressed in Whole Dollars		<u>Capital Reserve (690.1850)</u> <u>(31)</u>	<u>Capital Reserve (1431)</u> <u>(32)</u>	<u>Other Capital Projects</u> <u>Fund</u> <u>(39)</u>	<u>Debt Service</u> <u>(40)</u>	<u>Permanent</u> <u>(90)</u>
<b>Revenues</b>						
6000	Revenue from Local Sources			13,900		
7000	Revenue from State Sources					
8000	Revenue from Federal Sources					
<b>Total Revenues</b>				<b>\$13,900</b>		
<b>Expenditures</b>						
1000	Instruction					
2000	Support Services			1,830,523		
3000	Operation of Non-Instructional Services					
4000	Facilities Acquisition, Construction and Improvement Services			20,220,488		
5110	Debt Service					
5130	Refund of Prior Year Revenues / Receipts					
<b>Total Expenditures</b>				<b>\$22,051,011</b>		
<b>Excess (Deficiency) Of Revenues Over Expenditures</b>				<b>(\$22,037,111)</b>		
<b>Other Financing Sources (Uses)</b>						
9110	Face Value of Bonds Issued			9,615,000		
9120	Proceeds from Refunding of Bonds			15,515,000		
9130	Bond Premiums			380,942		
9200	Proceeds from Extended-Term Financing			1,522,932		
9300	Interfund Transfers - IN			670,909		
9400	Sale of or Compensation for Loss of Fixed Assets					
9710	Transfers from Component Units					
9720	Transfers from Primary Governments					
9910	Other Financing Sources Not Listed in the 9000 Series					
9990	Insurance Recoveries					
5120	Debt Service – Refunded Bonds			15,413,907		
5150	Bond Discounts					
5200	Interfund Transfers – Out					
5300	Transfers Out to Component Units/Primary Governments					
<b>Total Other Financing Sources (Uses)</b>				<b>\$12,290,876</b>		

Amounts Expressed in Whole Dollars		<u>Total Governmental Funds</u>
<b>Revenues</b>		
6000	Revenue from Local Sources	108,008,420
7000	Revenue from State Sources	22,190,578
8000	Revenue from Federal Sources	1,054,755
<b>Total Revenues</b>		<b>\$131,253,753</b>
<b>Expenditures</b>		
1000	Instruction	78,898,919
2000	Support Services	37,735,790
3000	Operation of Non-Instructional Services	1,516,069
4000	Facilities Acquisition, Construction and Improvement Services	20,220,488
5110	Debt Service	10,908,203
5130	Refund of Prior Year Revenues / Receipts	
<b>Total Expenditures</b>		<b>\$149,279,469</b>
<b>Excess (Deficiency) Of Revenues Over Expenditures</b>		<b>(\$18,025,716)</b>
<b>Other Financing Sources (Uses)</b>		
9110	Face Value of Bonds Issued	9,615,000
9120	Proceeds from Refunding of Bonds	15,515,000
9130	Bond Premiums	380,942
9200	Proceeds from Extended-Term Financing	1,522,932
9300	Interfund Transfers - IN	670,909
9400	Sale of or Compensation for Loss of Fixed Assets	
9710	Transfers from Component Units	
9720	Transfers from Primary Governments	
9910	Other Financing Sources Not Listed in the 9000 Series	
9990	Insurance Recoveries	
5120	Debt Service – Refunded Bonds	15,413,907
5150	Bond Discounts	
5200	Interfund Transfers – Out	870,909
5300	Transfers Out to Component Units/Primary Governments	
<b>Total Other Financing Sources (Uses)</b>		<b>\$11,419,967</b>

Amounts Expressed in Whole Dollars		<u>General Fund</u> <u>(10)</u>	<u>Student Sponsored</u> <u>Activity Fund</u> <u>(21)</u>	<u>Public Purpose Trust</u> <u>(27)</u>	<u>Other Compt Approved</u> <u>(28)</u>	<u>Athletic / Activity</u> <u>(29)</u>
<b>Special And Extraordinary Items</b>						
9920 Special Items – Gains						
9930 Extraordinary Items – Gains						
5520 Special Items – Losses						
5530 Extraordinary Items – Losses						
<b>Net Change In Fund Balances</b>		<b>\$3,164,505</b>	<b>(\$24,019)</b>			
<b>Fund Balance</b>						
0001 Fund Balance - Beginning of Fiscal Year		17,714,059	200,137			
<b>Fund Balance - End Of Year</b>		<b>\$20,878,564</b>	<b>\$176,118</b>			



Amounts Expressed in Whole Dollars		<u>Capital Reserve (690.</u> <u>1850)</u> <u>(31)</u>	<u>Capital Reserve (1431)</u> <u>(32)</u>	<u>Other Capital Projects</u> <u>Fund</u> <u>(39)</u>	<u>Debt Service</u> <u>(40)</u>	<u>Permanent</u> <u>(90)</u>
<b>Special And Extraordinary Items</b>						
9920	Special Items – Gains					
9930	Extraordinary Items – Gains					
5520	Special Items – Losses					
5530	Extraordinary Items – Losses					
<b>Net Change In Fund Balances</b>				<b>(\$9,746,235)</b>		
<b>Fund Balance</b>						
0001	Fund Balance - Beginning of Fiscal Year			28,047,152		
<b>Fund Balance - End Of Year</b>				<b>\$18,300,917</b>		

Amounts Expressed in Whole Dollars		<u>Total Governmental Funds</u>
<b>Special And Extraordinary Items</b>		
9920	Special Items – Gains	
9930	Extraordinary Items – Gains	
5520	Special Items – Losses	
5530	Extraordinary Items – Losses	
<b>Net Change In Fund Balances</b>		<b>(\$6,605,749)</b>
<b>Fund Balance</b>		
0001	Fund Balance - Beginning of Fiscal Year	45,961,348
<b>Fund Balance - End Of Year</b>		<b>\$39,355,599</b>

Amounts Expressed in Whole Dollars	<u>Food Service</u> (51)	<u>Child Care</u> <u>Operations</u> (52)	<u>Other Enterprise</u> (58)	<u>TOTAL</u>	<u>Internal Service</u> (60)
<b>Assets And Deferred Outflows Of Resources</b>					
<b>Current Assets</b>					
0100 Cash and Cash Equivalents					
0110 Investments					
0130 Due From Other Funds					
0141 Due From Other Governments	72,880			72,880	
0142 State Revenue Receivable					
0143 Federal Revenue Receivable					
0146 Due from Primary Government					
0147 Due from Component Unit					
0150 Other Receivables					
0170 Inventories	80,717			80,717	
0180 Prepaid Expenses (Expenditures)					12,728,492
0190 Other Current Assets					
<b>Total Current Assets</b>	<b>\$153,597</b>			<b>\$153,597</b>	<b>\$12,728,492</b>
<b>Noncurrent Assets</b>					
0211 Land					
0212 Site Improvements (Net)					
0220 Buildings and Building Improvements (Net)					
0230 Machinery, Equipment and Furniture (Net)	377,843			377,843	
0250 Construction in Progress					
0260 Long Term Prepayments					
0290 Other Noncurrent Assets					
<b>Total Noncurrent Assets</b>	<b>\$377,843</b>			<b>\$377,843</b>	
0910 Deferred Outflows of Resources	371,888			371,888	
<b>Total Assets And Deferred Outflows Of Resources</b>	<b>\$903,328</b>			<b>\$903,328</b>	<b>\$12,728,492</b>

Amounts Expressed in Whole Dollars	<u>Food Service</u> <u>(51)</u>	<u>Child Care</u> <u>Operations</u> <u>(52)</u>	<u>Other Enterprise</u> <u>(58)</u>	<u>TOTAL</u>	<u>Internal Service</u> <u>(60)</u>
<b>Liabilities And Deferred Inflows Of Resources And Net Position</b>					
<b>Current Liabilities</b>					
0400 Due to Other Funds	793,773			793,773	
0411 Due to Other Governments					
0413 Due to Component Unit					
0420 Accounts Payable	8,899			8,899	
0430 Contracts Payable					
0440 Current Portion of Long-Term Debt					
0450 Short-Term Payables					
0461 Accrued Salaries and Benefits	80,438			80,438	
0462 Payroll Deductions and Withholding					
0480 Unearned Revenues	113,372			113,372	
0490 Other Current Liabilities					
<b>Total Current Liabilities</b>	<b>\$996,482</b>			<b>\$996,482</b>	
<b>Noncurrent Liabilities</b>					
0510 Bonds Payable					
0520 Extended-Term Financing Agreements Payable					
0530 Lease-Purchase Obligations					
0540 Accumulated Compensated Absences					
0550 Authority Lease Obligations					
0560 Other Post-Employment Benefits (OPEB)	103,791			103,791	
0570 Net Pension Liability	2,359,431			2,359,431	
0599 Other Noncurrent Liabilities					
<b>Total Noncurrent Liabilities</b>	<b>\$2,463,222</b>			<b>\$2,463,222</b>	
<b>Total Liabilities</b>	<b>\$3,459,704</b>			<b>\$3,459,704</b>	
0950 Deferred Inflows of Resources	60,195			60,195	
<b>Net Position</b>					
0791 Net Investment in Capital Assets	377,843			377,843	
0008 Restricted Net Position (0792 – 0798)					
0799 Unrestricted Net Position	(2,994,414)			(2,994,414)	12,728,492
<b>Total Net Position</b>	<b>(\$2,616,571)</b>			<b>(\$2,616,571)</b>	<b>\$12,728,492</b>
<b>Total Liabilities And Deferred Inflows Of Resources And Net Position</b>	<b>\$903,328</b>			<b>\$903,328</b>	<b>\$12,728,492</b>

Amounts Expressed in Whole Dollars	<u>Food Service</u> <u>(51)</u>	<u>Child Care Operations</u> <u>(52)</u>	<u>Other Enterprise</u> <u>(58)</u>	<u>TOTAL</u>	<u>Internal Service</u> <u>(60)</u>
<b>Operating Revenues</b>					
6600 Food Service Revenue					
0071 Charges for Services	5,562			5,562	14,664,932
0072 Other Operating Revenue					
<b>Total Operating Revenues</b>	<b>\$5,562</b>			<b>\$5,562</b>	<b>\$14,664,932</b>
<b>Operating Expenses</b>					
100 Personnel Services – Salaries	452,492			452,492	
200 Personnel Services – Employee Benefits	302,729			302,729	10,913,892
300 Purchased Professional and Technical Services	42,090			42,090	1,391,175
400 Purchased Property Services	30,442			30,442	
500 Other Purchased Services	45,028			45,028	
600 Supplies	346,667			346,667	
740 Depreciation	87,755			87,755	
810 Dues and Fees	15,365			15,365	
880 Refunds of Prior Years' Receipts					
890 Miscellaneous Expenditures					
<b>Total Operating Expenses</b>	<b>\$1,322,568</b>			<b>\$1,322,568</b>	<b>\$12,305,067</b>
<b>Operating Income (Loss)</b>	<b>(\$1,317,006)</b>			<b>(\$1,317,006)</b>	<b>\$2,359,865</b>
<b>Non Operating Revenues (Expenses)</b>					
6500 Earnings on Investments	60			60	12,610
6920 Contributions and Donations from Private Sources					
6930 Gains or Losses on Sale of Fixed Assets					
6991 Refunds of a Prior Year Expenditure					
7000 Revenue from State Sources	117,440			117,440	
8000 Revenue from Federal Sources	712,139			712,139	
9990 Insurance Recoveries					
820 Claims and Judgments Against the LEA					
830 Interest					
<b>TOTAL Non Operating Revenues (Expenses)</b>	<b>\$829,639</b>			<b>\$829,639</b>	<b>\$12,610</b>
<b>Income (Loss) Before Contributions And Transfers</b>	<b>(\$487,367)</b>			<b>(\$487,367)</b>	<b>\$2,372,475</b>

Amounts Expressed in Whole Dollars	<u>Food Service</u> <u>(51)</u>	<u>Child Care Operations</u> <u>(52)</u>	<u>Other Enterprise</u> <u>(58)</u>	<u>TOTAL</u>	<u>Internal Service</u> <u>(60)</u>
<b>Contributions, Transfers, and Special and Extraordinary Items</b>					
5200 Interfund Transfers – Out					
5300 Transfers Out to Component Units/Primary Governments					
5520 Special Items – Losses					
5530 Extraordinary Items – Losses					
9300 Interfund Transfers - IN	200,000			200,000	
9500 Capital Contributions					
9700 Transfers IN From Component Units/Primary Governments					
9920 Special Items – Gains					
9930 Extraordinary Items – Gains					
<b>Change In Net Position</b>	<b>(\$287,367)</b>			<b>(\$287,367)</b>	<b>\$2,372,475</b>
0002 Net Position - Beginning of Fiscal Year	(2,329,204)			(2,329,204)	10,356,017
0003 Accounting Changes / Residual Equity Transfers					
<b>Net Position - End Of Year</b>	<b>(\$2,616,571)</b>			<b>(\$2,616,571)</b>	<b>\$12,728,492</b>

LEA : 125234502     Haverford Township SD

Printed 1/4/2022 9:16:16 AM

Amounts Expressed in Whole Dollars		<u>Food Service</u> <u>(51)</u>	<u>Child Care Operations</u> <u>(52)</u>	<u>Other Enterprise</u> <u>(58)</u>	<u>TOTAL</u>	<u>Internal Service(60)</u>
<b>Cash Flows From Operating Activities</b>						
0011	Cash Receipts From Users	23,267			23,267	
0012	Cash Receipts From Assessments Made to Other Funds					14,664,932
0013	Cash Receipts From Earnings on Investments					
0014	Cash Receipts From Other Operating Revenue					
0015	Cash Payments To Employees For Services	567,416			567,416	
0016	Cash Payments For Insurance Claims					13,286,367
0017	Cash Payments To Suppliers For Goods and Services	483,672			483,672	
0018	Cash Payments For Other Operating Expenses					1,391,175
<b>Net Cash Provided By (Used For) Operating Activities</b>		<b>(\$1,027,821)</b>			<b>(\$1,027,821)</b>	<b>(\$12,610)</b>
<b>Cash Flows From Non-Capital Financing Activities</b>						
0021	Receipts From Local Sources - 6000					
0022	Receipts From State Sources - 7000	115,831			115,831	
0023	Receipts From Federal Sources -8000	617,751			617,751	
0024	Notes and Loans Received (Repaid)					
0025	Interest Paid on Notes/Loans - 5100-830					
0026	Operating Transfers In (Out)/Residual Equity Trans					
0027	Operating Transfers In (Out) Primary Government / Comp Unit	200,000			200,000	
0028	Receipts From Refund of Prior Year Expenditures - 6991					
0029	Special and Extraordinary Gains (losses)					
0030	Receipts from Insurance Recoveries -9990					
<b>Net Cash Prov By (Used for) Non-Capital Financing Activities</b>		<b>\$933,582</b>			<b>\$933,582</b>	
<b>Cash Flows From Capital and Related Financing Activities</b>						
0031	Payments For Fac Acq, Const, and Imp - 4000					
0032	Gain / (Loss) on Sale of Fixed Assets - 6930					
0033	Proceeds From Extended Term Financing - 9200					
0034	Principal Paid on Financing Agreements					
0035	Interest Paid on Financing Agreements - 5100-830					
0036	(Inc) Dec in Contributed Capital					
<b>Net Cash Prov By (Used for) Capital and Related Financing Activities</b>						
<b>Cash Flows From Investing Activities</b>						
0041	Earnings on Investments - 6500	60			60	12,610
0042	Purchase of Inv Securities / Deposits to Inv Pools					
0043	Receipts From Investment Pool Withdrawals					
0044	Proceeds from Sale and Maturity of Inv Securities					

LEA : 125234502     Haverford Township SD

Printed 1/4/2022 9:16:16 AM

0045   Loans Received (Paid)

Net Cash Prov By (Used for) Investing Activities	\$60	\$60	\$12,610
--	------	------	----------



LEA : 125234502     Haverford Township SD

Printed 1/4/2022 9:16:16 AM

	<u>Food Service</u> <u>(51)</u>	<u>Child Care Operations</u> <u>(52)</u>	<u>Other Enterprise</u> <u>(58)</u>	<u>TOTAL</u>	<u>Internal Service</u> <u>(60)</u>
<b>Net Increase (Decrease) in Cash Flows</b>	<b>(94,179)</b>			<b>(94,179)</b>	
0004 Cash and Cash Equivalents Beginning of Year	94,179			94,179	
<b>Cash and Cash Equivalents at Year End</b>					
<b>Reconciliation of Operating Income (Loss) To Net Cash Provided by (Used For) Operating Activities</b>					
0005 Operating Income (Loss) per REP	(1,317,006)			(1,317,006)	2,359,865
<b>Adjustments</b>					
0051 Depreciation and Net Amortization	87,755			87,755	
0052 Provision for Uncollectible Accounts					
0053 Other Adjustments	54,404			54,404	
<b>Effect of Changes in Assets, Liabilities, Deferred Outflows and Deferred Inflows</b>					
0054 (Inc) Dec In Accounts Receivable (0120-0150)					
0055 Advances to Other Funds (0160)	167,086			167,086	
0056 (Inc) Dec in Inventories (0170)	(34,555)			(34,555)	
0057 (Inc) Dec in Prepaid Expenses (0180)					(2,372,475)
0058 (Inc) Dec in Other Current or Noncurrent Assets					
0064 Deferred Outflows (0910)	(61,555)			(61,555)	
0059 Inc (Dec) in Accounts Payable (0400-0450)	(23,929)			(23,929)	
0060 Inc (Dec) in Accrued Salaries/Benefits (0461)	(12,303)			(12,303)	
0065 Inc (Dec) in Net Pension Liabilities (0570)	118,809			118,809	
0066 Inc (Dec) in Other Postemp Benefit Oblig (0560)	1,927			1,927	
0061 Inc (Dec) in Payroll Deductions/Withholding (0462)					
0062 Inc (Dec) in Unearned Revenue (0480)	17,705			17,705	
0063 Inc (Dec) in Other Current or Noncurrent Liabilities					
0067 Deferred Inflows (0950)	(26,159)			(26,159)	
<b>Total Adjustments</b>	<b>\$289,185</b>			<b>\$289,185</b>	<b>(\$2,372,475)</b>
<b>Cash Provided By (Used for) Total</b>	<b>(\$1,027,821)</b>			<b>(\$1,027,821)</b>	<b>(\$12,610)</b>

COMBINED STATEMENT OF CASH FLOWS  
SCHEDULE OF NONCASH INVESTING, CAPITAL, AND FINANCING ACTIVITIES

Explanation of Transaction and Balance Sheet Effect	Amount
Total	

LEA : 125234502     Haverford Township SD

Printed 1/4/2022 9:16:20 AM

Amounts Expressed in Whole Dollars		<u>Private Purpose Trust</u> <u>(71)</u>	<u>Investment Trust</u> <u>(72)</u>	<u>Pension Trust</u> <u>(73)</u>	<u>Student Activity Custodial</u> <u>(81)</u>
<b>Assets And Deferred Outflows Of Resources</b>					
<b>Assets</b>					
0100	Cash and Cash Equivalents	121,049			382,198
0110	Investments				
0130	Due From Other Funds				
0140	Due from Other Governments, Primary Government and Component Units				
0150	Other Receivables				
0170	Inventories				
0180	Prepaid Expenses (Expenditures)				
0190	Other Current Assets				
0220	Buildings and Building Improvements (Net)				
0230	Machinery, Equipment and Furniture (Net)				
<b>Total Assets</b>		<b>\$121,049</b>			<b>\$382,198</b>
0910	Deferred Outflows of Resources				
<b>Total Assets And Deferred Outflows Of Resources</b>		<b>\$121,049</b>			<b>\$382,198</b>

LEA : 125234502     Haverford Township SD

Printed 1/4/2022 9:16:20 AM

Amounts Expressed in Whole Dollars		<u>Other Custodial</u> <u>(89)</u>	<u>Fiduciary Component Units</u> <u>(98)</u>	<u>Total Fiduciary Funds</u>
<b>Assets And Deferred Outflows Of Resources</b>				
<b>Assets</b>				
0100	Cash and Cash Equivalents			503,247
0110	Investments			
0130	Due From Other Funds			
0140	Due from Other Governments, Primary Government and Component Units			
0150	Other Receivables			
0170	Inventories			
0180	Prepaid Expenses (Expenditures)			
0190	Other Current Assets			
0220	Buildings and Building Improvements (Net)			
0230	Machinery, Equipment and Furniture (Net)			
<b>Total Assets</b>				<b>\$503,247</b>
0910	Deferred Outflows of Resources			
<b>Total Assets And Deferred Outflows Of Resources</b>				<b>\$503,247</b>

LEA : 125234502     Haverford Township SD

Printed 1/4/2022 9:16:20 AM

Amounts Expressed in Whole Dollars	<u>Private Purpose Trust</u> <u>(71)</u>	<u>Investment Trust</u> <u>(72)</u>	<u>Pension Trust</u> <u>(73)</u>	<u>Student Activity Custodial</u> <u>(81)</u>
<b>Liabilities, Deferred Inflows Of Resources And Net Position</b>				
<b>Liabilities</b>				
0400 Due to Other Funds				
0410 Due to Other Governments, Primary Government and Component Units				
0420 Accounts Payable				
0430 Contracts Payable				
0450 Short-Term Payables				
0460 Payroll Accruals and Withholdings				
0480 Unearned Revenues				
0490 Other Current Liabilities				
<b>Total Liabilities</b>				
0950 Deferred Inflows of Resources				
<b>Net Position</b>				
0791 Net Investment in Capital Assets				
0009 Restricted Net Position (0792 – 0798)	121,049			382,198
0799 Unrestricted Net Position				
<b>Total Net Position</b>	<b>\$121,049</b>			<b>\$382,198</b>
<b>Total Liabilities, Deferred Inflows Of Resources And Net Position</b>	<b>\$121,049</b>			<b>\$382,198</b>

LEA : 125234502     Haverford Township SD

Printed 1/4/2022 9:16:20 AM

Amounts Expressed in Whole Dollars		<u>Other Custodial</u>	<u>Fiduciary Component Units</u>	<u>Total Fiduciary Funds</u>
		<u>(89)</u>	<u>(98)</u>	
<b>Liabilities, Deferred Inflows Of Resources And Net Position</b>				
<b>Liabilities</b>				
0400	Due to Other Funds			
0410	Due to Other Governments, Primary Government and Component Units			
0420	Accounts Payable			
0430	Contracts Payable			
0450	Short-Term Payables			
0460	Payroll Accruals and Withholdings			
0480	Unearned Revenues			
0490	Other Current Liabilities			
<b>Total Liabilities</b>				
0950	Deferred Inflows of Resources			
<b>Net Position</b>				
0791	Net Investment in Capital Assets			
0009	Restricted Net Position (0792 – 0798)			503,247
0799	Unrestricted Net Position			
<b>Total Net Position</b>				<b>\$503,247</b>
<b>Total Liabilities, Deferred Inflows Of Resources And Net Position</b>				<b>\$503,247</b>

LEA : 125234502     Haverford Township SD

Printed 1/4/2022 9:16:22 AM

Amounts Expressed in Whole Dollars	<u>Private Purpose Trust</u> <u>(71)</u>	<u>Investment Trust</u> <u>(72)</u>	<u>Pension Trust</u> <u>(73)</u>	<u>Student Activity</u> <u>Custodial</u> <u>(81)</u>	<u>Other Custodial</u> <u>(89)</u>	<u>Fiduciary Component</u> <u>Units</u> <u>(98)</u>
<b>Additions</b>						
0091 Gifts and Contributions	53,602			316,142		
0095 Net Investment Earnings						
0092 Other Additions						
<b>Deductions</b>						
0093 Scholarships Awarded	56,897					
0094 Other Deductions				417,537		
<b>Change In Net Position</b>	<b>(\$3,295)</b>			<b>(\$101,395)</b>		
0006 Net Position – Beginning of Fiscal Year	124,344			483,593		
0007 Net Position Held in Trust for Pension Benefits						
<b>Net Position - End of Fiscal Year</b>	<b>\$121,049</b>			<b>\$382,198</b>		

LEA : 125234502     Haverford Township SD

Printed 1/4/2022 9:16:22 AM

Amounts Expressed in Whole Dollars		<u>Total Fiduciary</u> <u>Funds</u>
<b>Additions</b>		
0091	Gifts and Contributions	369,744
0095	Net Investment Earnings	
0092	Other Additions	
<b>Deductions</b>		
0093	Scholarships Awarded	56,897
0094	Other Deductions	417,537
<b>Change In Net Position</b>		<b>(\$104,690)</b>
0006	Net Position – Beginning of Fiscal Year	607,937
0007	Net Position Held in Trust for Pension Benefits	
<b>Net Position - End of Fiscal Year</b>		<b>\$503,247</b>



	Revenue Reported In Current Year	Current Year Tax Accrual	Prior Year Tax Accrual	Taxes Collected In Current Year
<b>Revenue from Local Sources</b>				
6111 Current Real Estate Taxes	100,777,177.24			100,777,177.24
6112 Interim Real Estate Taxes	80,570.02			80,570.02
6113 Public Utility Realty Taxes	98,641.20			98,641.20
6153 Current Act 511 Real Estate Transfer Taxes	1,842,261.41			1,842,261.41
6411 Delinquent Real Estate Taxes	2,403,845.23			2,403,845.23
6500 Earnings on Investments	55,941.11			
6832 Federal IDEA Revenue Received as Pass Through	1,167,907.00			
6837 Federal Cares Act Revenue Received as Pass Through	244,132.80			
6910 Rentals	9,562.50			
6942 Summer School Tuition	14,652.04			
6991 Refunds of a Prior Year Expenditure	1,135,650.94			
6999 Other Revenues Not Specified Above	131,297.48			
<b>TOTAL Revenue from Local Sources</b>	<b>\$107,961,638.97</b>			<b>\$105,202,495.10</b>

	Revenue Reported In Current Year			
<b><u>Revenue from State Sources</u></b>				
7111 Basic Education Funding-Formula	3,631,989.11			
7112 Basic Education Funding-Social Security	2,320,984.33			
7271 Special Education funds for School-Aged Pupils	2,534,282.78			
7311 Pupil Transportation Subsidy	712,617.86			
7312 Nonpublic and Charter School Pupil Transportation Subsidy	513,205.00			
7320 Rental and Sinking Fund Payments / Building Reimbursement Subsidy	9,574.85			
7330 Health Services (Medical, Dental, Nurse, Act 25)	143,173.50			
7340 State Property Tax Reduction Allocation	2,104,091.43			
7361 School Safety and Security Grants	40,000.00			
7505 Ready to Learn Block Grant	192,476.00			
7506 PAsmart Grants	(6,017.08)			
7820 State Share of Retirement Contributions	9,994,199.99			
<b>TOTAL Revenue from State Sources</b>	<b>\$22,190,577.77</b>			

	Revenue Reported In Current Year			
<b><u>Revenue from Federal Sources</u></b>				
8514 NCLB, Title I - Improving the Academic Achievement of the Disadvantaged	179,466.00			
8515 NCLB, Title II - Preparing, Training and Recruiting High Quality Teachers and Principals	103,335.80			
8517 NCLB, Title IV - 21st Century Schools	14,855.00			
8741 Elementary and Secondary School Emergency Relief Fund (ESSER)	359,496.00			
8742 Governor's Emergency Education Relief Fund (GEER)	31,019.45			
8749 Other CARES Act Funding	342,635.00			
8820 Medical Assistance Reimbursement for Administrative Claiming (Quarterly) Program	23,947.97			
<b>TOTAL Revenue from Federal Sources</b>	<b>\$1,054,755.22</b>			
<b>TOTAL FROM ALL SOURCES</b>	<b>\$131,206,971.96</b>			<b>\$105,202,495.10</b>

LEA : 125234502     Haverford Township SD

Printed 1/4/2022 9:16:28 AM

	<u>General Fund (10)</u>	<u>Student Sponsored Activity Fund (21)</u>	<u>Public Purpose Trust (27)</u>	<u>Other Compt Approved (28)</u>	<u>Athletic / Activity (29)</u>	<u>Capital Reserve (690, 1850) (31)</u>
<b>6000 Revenue from Local Sources</b>						
6111 Current Real Estate Taxes	100,777,177.24					
6112 Interim Real Estate Taxes	80,570.02					
6113 Public Utility Realty Taxes	98,641.20					
6153 Current Act 511 Real Estate Transfer Taxes	1,842,261.41					
6411 Delinquent Real Estate Taxes	2,403,845.23					
6500 Earnings on Investments	55,941.11					
6700 Revenues from LEA Activities		32,881.31				
6832 Federal IDEA Revenue Received as Pass Through	1,167,907.00					
6837 Federal Cares Act Revenue Received as Pass Through	244,132.80					
6910 Rentals	9,562.50					
6942 Summer School Tuition	14,652.04					
6991 Refunds of a Prior Year Expenditure	1,135,650.94					
6999 Other Revenues Not Specified Above	131,297.48					
<b>6000 Total Revenue from Local Sources</b>	<b>\$107,961,638.97</b>	<b>\$32,881.31</b>				
<b>7000 Revenue from State Sources</b>						
7111 Basic Education Funding-Formula	3,631,989.11					
7112 Basic Education Funding-Social Security	2,320,984.33					
7271 Special Education funds for School-Aged Pupils	2,534,282.78					
7311 Pupil Transportation Subsidy	712,617.86					
7312 Nonpublic and Charter School Pupil Transportation Subsidy	513,205.00					
7320 Rental and Sinking Fund Payments / Building Reimbursement Subsidy	9,574.85					
7330 Health Services (Medical, Dental, Nurse, Act 25)	143,173.50					
7340 State Property Tax Reduction Allocation	2,104,091.43					
7361 School Safety and Security Grants	40,000.00					
7505 Ready to Learn Block Grant	192,476.00					
7506 PAsmart Grants	(6,017.08)					
7820 State Share of Retirement Contributions	9,994,199.99					
<b>7000 Total Revenue from State Sources</b>	<b>\$22,190,577.77</b>					
<b>8000 Revenue from Federal Sources</b>						
8514 NCLB, Title I - Improving the Academic Achievement of the Disadvantaged	179,466.00					
8515 NCLB, Title II - Preparing, Training and Recruiting High Quality Teachers and Principals	103,335.80					
8517 NCLB, Title IV - 21St Century Schools	14,855.00					
8741 Elementary and Secondary School Emergency Relief Fund (ESSER)	359,496.00					
8742 Governor's Emergency Education Relief Fund (GEER)	31,019.45					

LEA : 125234502     Haverford Township SD

Printed 1/4/2022 9:16:28 AM

	<u>Capital Reserve</u> <u>(1431) (32)</u>	<u>Other Capital</u> <u>Projects Fund (39)</u>	<u>Debt Service (40)</u>	<u>Permanent (90)</u>	<u>Total</u>
<b>6000 Revenue from Local Sources</b>					
6111 Current Real Estate Taxes					100,777,177.24
6112 Interim Real Estate Taxes					80,570.02
6113 Public Utility Realty Taxes					98,641.20
6153 Current Act 511 Real Estate Transfer Taxes					1,842,261.41
6411 Delinquent Real Estate Taxes					2,403,845.23
6500 Earnings on Investments		13,899.57			69,840.68
6700 Revenues from LEA Activities					32,881.31
6832 Federal IDEA Revenue Received as Pass Through					1,167,907.00
6837 Federal Cares Act Revenue Received as Pass Through					244,132.80
6910 Rentals					9,562.50
6942 Summer School Tuition					14,652.04
6991 Refunds of a Prior Year Expenditure					1,135,650.94
6999 Other Revenues Not Specified Above					131,297.48
<b>6000 Total Revenue from Local Sources</b>		<b>\$13,899.57</b>			<b>\$108,008,419.85</b>
<b>7000 Revenue from State Sources</b>					
7111 Basic Education Funding-Formula					3,631,989.11
7112 Basic Education Funding-Social Security					2,320,984.33
7271 Special Education funds for School-Aged Pupils					2,534,282.78
7311 Pupil Transportation Subsidy					712,617.86
7312 Nonpublic and Charter School Pupil Transportation Subsidy					513,205.00
7320 Rental and Sinking Fund Payments / Building Reimbursement Subsidy					9,574.85
7330 Health Services (Medical, Dental, Nurse, Act 25)					143,173.50
7340 State Property Tax Reduction Allocation					2,104,091.43
7361 School Safety and Security Grants					40,000.00
7505 Ready to Learn Block Grant					192,476.00
7506 PAsmart Grants					(6,017.08)
7820 State Share of Retirement Contributions					9,994,199.99
<b>7000 Total Revenue from State Sources</b>					<b>\$22,190,577.77</b>
<b>8000 Revenue from Federal Sources</b>					
8514 NCLB, Title I - Improving the Academic Achievement of the Disadvantaged					179,466.00
8515 NCLB, Title II - Preparing, Training and Recruiting High Quality Teachers and Principals					103,335.80
8517 NCLB, Title IV - 21st Century Schools					14,855.00
8741 Elementary and Secondary School Emergency Relief Fund (ESSER)					359,496.00
8742 Governor's Emergency Education Relief Fund (GEER)					31,019.45

LEA : 125234502     Haverford Township SD

Printed 1/4/2022 9:16:28 AM

	<u>General Fund (10)</u>	<u>Student Sponsored Activity Fund (21)</u>	<u>Public Purpose Trust (27)</u>	<u>Other Compt Approved (28)</u>	<u>Athletic / Activity (29)</u>	<u>Capital Reserve (690, 1850) (31)</u>
<b>8000 Revenue from Federal Sources</b>						
8749 Other CARES Act Funding	342,635.00					
8820 Medical Assistance Reimbursement for Administrative Claiming (Quarterly) Program	23,947.97					
<b>8000 Total Revenue from Federal Sources</b>	<b>\$1,054,755.22</b>					
<b>9000 Other Financing Sources</b>						
9110 Face Value of Bonds Issued						
9120 Proceeds from Refunding of Bonds						
9130 Bond Premiums						
9290 Other Extended-Term Financing Proceeds						
9310 General Fund Transfers						
<b>9000 Total Other Financing Sources</b>						
<b>Total From All Sources</b>	<b>\$131,206,971.96</b>	<b>\$32,881.31</b>				

LEA : 125234502     Haverford Township SD

Printed 1/4/2022 9:16:28 AM

	<u>Capital Reserve</u> <u>(1431) (32)</u>	<u>Other Capital</u> <u>Projects Fund (39)</u>	<u>Debt Service (40)</u>	<u>Permanent (90)</u>	<u>Total</u>
<b>8000 Revenue from Federal Sources</b>					
8749 Other CARES Act Funding					342,635.00
8820 Medical Assistance Reimbursement for Administrative Claiming (Quarterly) Program					23,947.97
<b>8000 Total Revenue from Federal Sources</b>					<b>\$1,054,755.22</b>
<b>9000 Other Financing Sources</b>					
9110 Face Value of Bonds Issued		9,615,000.00			9,615,000.00
9120 Proceeds from Refunding of Bonds		15,515,000.00			15,515,000.00
9130 Bond Premiums		380,942.00			380,942.00
9290 Other Extended-Term Financing Proceeds		1,522,932.00			1,522,932.00
9310 General Fund Transfers		670,908.57			670,908.57
<b>9000 Total Other Financing Sources</b>		<b>\$27,704,782.57</b>			<b>\$27,704,782.57</b>
<b>Total From All Sources</b>		<b>\$27,718,682.14</b>			<b>\$158,958,535.41</b>

LEA : 125234502     Haverford Township SD

Printed 1/4/2022 9:16:32 AM

	<u>General Fund (10)</u>	<u>Student Sponsored Activity Fund (21)</u>	<u>Public Purpose Trust (27)</u>	<u>Other Compt Approved (28)</u>	<u>Athletic / Activity (29)</u>	<u>Capital Reserve (690. 1850) (31)</u>
Revenue from Local Sources	107,961,638.97	32,881.31				
Revenue from State Sources	22,190,577.77					
Revenue from Federal Sources	1,054,755.22					
Other Financing Sources						
Total From All Sources	\$131,206,971.96	\$32,881.31				



LEA : 125234502     Haverford Township SD

Printed 1/4/2022 9:16:32 AM

	<u>Capital Reserve (1431)</u> <u>(32)</u>	<u>Other Capital Projects</u> <u>Fund (39)</u>	<u>Debt Service (40)</u>	<u>Permanent (90)</u>	<u>Total</u>
Revenue from Local Sources		13,899.57			108,008,419.85
Revenue from State Sources					22,190,577.77
Revenue from Federal Sources					1,054,755.22
Other Financing Sources		27,704,782.57			27,704,782.57
Total From All Sources		\$27,718,682.14			\$158,958,535.41

LEA : 125234502     Haverford Township SD

Printed 1/4/2022 9:16:37 AM

General Fund (10)

1000 Instruction		Total
<b>100 <u>Personnel Services – Salaries</u></b>		
100 Personnel Services – Salaries		40,112,319.50
<b>Total Personnel Services – Salaries</b>		<b>\$40,112,319.50</b>
<b>200 <u>Personnel Services – Employee Benefits</u></b>		
210 Group Insurance – Contracted Provider		9,402,303.83
220 Social Security Contributions		3,002,991.04
230 PSERS Retirement Contributions		13,867,162.22
250 Unemployment Compensation		3,809.72
260 Workers' Compensation		262,288.00
270 Group Insurance – Self-Insurance		2,279.06
291 Other Retirement Plans		52,050.94
<b>Total Personnel Services – Employee Benefits</b>		<b>\$26,592,884.81</b>
<b>300 <u>Purchased Professional and Technical Services</u></b>		
322 Professional Educational Services – Ius		2,412,986.37
323 Professional Educational Services – Other Educational Agencies		266.00
330 Other Professional Services		776,016.04
<b>Total Purchased Professional and Technical Services</b>		<b>\$3,189,268.41</b>
<b>400 <u>Purchased Property Services</u></b>		
410 Cleaning Services		5,741.77
430 Repairs and Maintenance Services		3,836.88
440 Rentals		538,570.24
<b>Total Purchased Property Services</b>		<b>\$548,148.89</b>
<b>500 <u>Other Purchased Services</u></b>		
530 Communications		241.02
561 Tuition To Other School Districts Within the State		82,090.20
562 Tuition To Pennsylvania Charter Schools		850,015.02
563 Tuition To Nonpublic Schools		1,305,714.87
564 Tuition To Career and Technology Centers		837,312.35
566 Tuition To Institutions of Higher Education and Technical Institutes		1,351,647.00
567 Tuition To Approved Private Schools (APS) and PA Chartered Schools for the Deaf and Blind		2,480,241.87
580 Travel		173.25
594 IU Payment By Withholding for Institutionalized Children's Programs – Special Classes		757.21
<b>Total Other Purchased Services</b>		<b>\$6,908,192.79</b>
<b>600 <u>Supplies</u></b>		
610 General Supplies		716,200.97
640 Books and Periodicals		304,342.66
650 Supplies & Fees – Technology Related		308,253.46
<b>Total Supplies</b>		<b>\$1,328,797.09</b>
<b>700 <u>Property</u></b>		
752 Capital Equipment – Original and Additional		209,426.02
762 Capitalized Equipment - Replacement		8,054.86
<b>Total Property</b>		<b>\$217,480.88</b>

LEA : 125234502     Haverford Township SD

Printed 1/4/2022 9:16:37 AM

General Fund (10)		
1000 Instruction		<u>Total</u>
800 <u>Other Objects</u>		
810 Dues and Fees		1,826.50
Total Other Objects		\$1,826.50
Total 1000 Instruction		\$78,898,918.87

LEA : 125234502     Haverford Township SD

Printed 1/4/2022 9:16:37 AM

General Fund (10)

1100 Regular Programs – Elementary / Secondary

	Elementary	Secondary	Federal	Total
<b>100 <u>Personnel Services – Salaries</u></b>				
100 Personnel Services – Salaries	15,593,297.70	14,088,878.09	128,333.10	29,810,508.89
<b>Total Personnel Services – Salaries</b>	<b>\$15,593,297.70</b>	<b>\$14,088,878.09</b>	<b>\$128,333.10</b>	<b>\$29,810,508.89</b>
<b>200 <u>Personnel Services – Employee Benefits</u></b>				
210 Group Insurance – Contracted Provider	3,339,975.87	2,897,381.12	32,330.42	6,269,687.41
220 Social Security Contributions	1,174,100.19	1,056,658.75	4,918.44	2,235,677.38
230 PSERS Retirement Contributions	5,401,796.50	4,896,471.74	22,140.93	10,320,409.17
250 Unemployment Compensation	1,904.86	1,904.86		3,809.72
260 Workers' Compensation	144,258.40	118,029.60		262,288.00
270 Group Insurance – Self-Insurance		2,279.06		2,279.06
291 Other Retirement Plans	33,750.00			33,750.00
<b>Total Personnel Services – Employee Benefits</b>	<b>\$10,095,785.82</b>	<b>\$8,972,725.13</b>	<b>\$59,389.79</b>	<b>\$19,127,900.74</b>
<b>300 <u>Purchased Professional and Technical Services</u></b>				
323 Professional Educational Services – Other Educational Agencies	266.00			266.00
330 Other Professional Services	923.65		187,277.50	188,201.15
<b>Total Purchased Professional and Technical Services</b>	<b>\$1,189.65</b>		<b>\$187,277.50</b>	<b>\$188,467.15</b>
<b>400 <u>Purchased Property Services</u></b>				
410 Cleaning Services		5,741.77		5,741.77
430 Repairs and Maintenance Services		3,836.88		3,836.88
440 Rentals	116,958.87	421,611.37		538,570.24
<b>Total Purchased Property Services</b>	<b>\$116,958.87</b>	<b>\$431,190.02</b>		<b>\$548,148.89</b>
<b>500 <u>Other Purchased Services</u></b>				
530 Communications		241.02		241.02
562 Tuition To Pennsylvania Charter Schools	376,643.38	218,325.35		594,968.73
580 Travel	151.00			151.00
<b>Total Other Purchased Services</b>	<b>\$376,794.38</b>	<b>\$218,566.37</b>		<b>\$595,360.75</b>
<b>600 <u>Supplies</u></b>				
610 General Supplies	165,376.29	189,993.17	303,918.33	659,287.79
640 Books and Periodicals	194,130.07	99,016.32		293,146.39
650 Supplies & Fees – Technology Related	106,644.17	73,114.69		179,758.86
<b>Total Supplies</b>	<b>\$466,150.53</b>	<b>\$362,124.18</b>	<b>\$303,918.33</b>	<b>\$1,132,193.04</b>
<b>700 <u>Property</u></b>				
752 Capital Equipment – Original and Additional	26,037.08	18,208.92	149,655.00	193,901.00
762 Capitalized Equipment - Replacement	2,283.71	5,771.15		8,054.86
<b>Total Property</b>	<b>\$28,320.79</b>	<b>\$23,980.07</b>	<b>\$149,655.00</b>	<b>\$201,955.86</b>
<b>800 <u>Other Objects</u></b>				
810 Dues and Fees		1,826.50		1,826.50
<b>Total Other Objects</b>		<b>\$1,826.50</b>		<b>\$1,826.50</b>
<b>Total 1100 Regular Programs – Elementary / Secondary</b>	<b>\$26,678,497.74</b>	<b>\$24,099,290.36</b>	<b>\$828,573.72</b>	<b>\$51,606,361.82</b>

LEA : 125234502     Haverford Township SD

Printed 1/4/2022 9:16:37 AM

General Fund (10)

1110 Regular Programs

	Elementary	Secondary	Federal	Total
<b>100 <u>Personnel Services – Salaries</u></b>				
100 Personnel Services – Salaries	15,593,297.70	14,088,878.09		29,682,175.79
<b>Total Personnel Services – Salaries</b>	<b>\$15,593,297.70</b>	<b>\$14,088,878.09</b>		<b>\$29,682,175.79</b>
<b>200 <u>Personnel Services – Employee Benefits</u></b>				
210 Group Insurance – Contracted Provider	3,339,975.87	2,897,381.12		6,237,356.99
220 Social Security Contributions	1,174,100.19	1,056,658.75		2,230,758.94
230 PSERS Retirement Contributions	5,401,796.50	4,896,471.74		10,298,268.24
250 Unemployment Compensation	1,904.86	1,904.86		3,809.72
260 Workers' Compensation	144,258.40	118,029.60		262,288.00
270 Group Insurance – Self-Insurance		2,279.06		2,279.06
291 Other Retirement Plans	33,750.00			33,750.00
<b>Total Personnel Services – Employee Benefits</b>	<b>\$10,095,785.82</b>	<b>\$8,972,725.13</b>		<b>\$19,068,510.95</b>
<b>300 <u>Purchased Professional and Technical Services</u></b>				
323 Professional Educational Services – Other Educational Agencies	266.00			266.00
330 Other Professional Services	923.65			923.65
<b>Total Purchased Professional and Technical Services</b>	<b>\$1,189.65</b>			<b>\$1,189.65</b>
<b>400 <u>Purchased Property Services</u></b>				
410 Cleaning Services		5,741.77		5,741.77
430 Repairs and Maintenance Services		3,836.88		3,836.88
440 Rentals	116,958.87	421,611.37		538,570.24
<b>Total Purchased Property Services</b>	<b>\$116,958.87</b>	<b>\$431,190.02</b>		<b>\$548,148.89</b>
<b>500 <u>Other Purchased Services</u></b>				
530 Communications		241.02		241.02
562 Tuition To Pennsylvania Charter Schools	376,643.38	218,325.35		594,968.73
580 Travel	151.00			151.00
<b>Total Other Purchased Services</b>	<b>\$376,794.38</b>	<b>\$218,566.37</b>		<b>\$595,360.75</b>
<b>600 <u>Supplies</u></b>				
610 General Supplies	165,376.29	189,993.17		355,369.46
640 Books and Periodicals	194,130.07	99,016.32		293,146.39
650 Supplies & Fees – Technology Related	106,644.17	73,114.69		179,758.86
<b>Total Supplies</b>	<b>\$466,150.53</b>	<b>\$362,124.18</b>		<b>\$828,274.71</b>
<b>700 <u>Property</u></b>				
752 Capital Equipment – Original and Additional	26,037.08	18,208.92		44,246.00
762 Capitalized Equipment - Replacement	2,283.71	5,771.15		8,054.86
<b>Total Property</b>	<b>\$28,320.79</b>	<b>\$23,980.07</b>		<b>\$52,300.86</b>
<b>800 <u>Other Objects</u></b>				
810 Dues and Fees		1,826.50		1,826.50
<b>Total Other Objects</b>		<b>\$1,826.50</b>		<b>\$1,826.50</b>
<b>Total 1110 Regular Programs</b>	<b>\$26,678,497.74</b>	<b>\$24,099,290.36</b>		<b>\$50,777,788.10</b>

LEA : 125234502     Haverford Township SD

Printed 1/4/2022 9:16:37 AM

General Fund (10)

1190 Federally-Funded Regular Programs	<u>Elementary</u>	<u>Secondary</u>	<u>Federal</u>	<u>Total</u>
<b>100 <u>Personnel Services – Salaries</u></b>				
100 Personnel Services – Salaries			128,333.10	128,333.10
<b>Total Personnel Services – Salaries</b>			<b>\$128,333.10</b>	<b>\$128,333.10</b>
<b>200 <u>Personnel Services – Employee Benefits</u></b>				
210 Group Insurance – Contracted Provider			32,330.42	32,330.42
220 Social Security Contributions			4,918.44	4,918.44
230 PSERS Retirement Contributions			22,140.93	22,140.93
<b>Total Personnel Services – Employee Benefits</b>			<b>\$59,389.79</b>	<b>\$59,389.79</b>
<b>300 <u>Purchased Professional and Technical Services</u></b>				
330 Other Professional Services			187,277.50	187,277.50
<b>Total Purchased Professional and Technical Services</b>			<b>\$187,277.50</b>	<b>\$187,277.50</b>
<b>600 <u>Supplies</u></b>				
610 General Supplies			303,918.33	303,918.33
<b>Total Supplies</b>			<b>\$303,918.33</b>	<b>\$303,918.33</b>
<b>700 <u>Property</u></b>				
752 Capital Equipment – Original and Additional			149,655.00	149,655.00
<b>Total Property</b>			<b>\$149,655.00</b>	<b>\$149,655.00</b>
<b>Total 1190 Federally-Funded Regular Programs</b>			<b>\$828,573.72</b>	<b>\$828,573.72</b>

LEA : 125234502     Haverford Township SD

Printed 1/4/2022 9:16:37 AM

General Fund (10)

1200 Special Programs – Elementary / Secondary	Elementary	Secondary	Federal	Total
<b>100 Personnel Services – Salaries</b>				
100 Personnel Services – Salaries	5,675,391.10	3,389,370.80	961,655.00	10,026,416.90
<b>Total Personnel Services – Salaries</b>	<b>\$5,675,391.10</b>	<b>\$3,389,370.80</b>	<b>\$961,655.00</b>	<b>\$10,026,416.90</b>
<b>200 Personnel Services – Employee Benefits</b>				
210 Group Insurance – Contracted Provider	1,986,431.94	1,081,668.22		3,068,100.16
220 Social Security Contributions	444,004.70	264,904.18	36,783.30	745,692.18
230 PSERS Retirement Contributions	2,050,526.17	1,228,091.23	165,645.07	3,444,262.47
291 Other Retirement Plans	5,526.09	12,774.85		18,300.94
<b>Total Personnel Services – Employee Benefits</b>	<b>\$4,486,488.90</b>	<b>\$2,587,438.48</b>	<b>\$202,428.37</b>	<b>\$7,276,355.75</b>
<b>300 Purchased Professional and Technical Services</b>				
322 Professional Educational Services – Ius	1,390,223.64	954,492.07		2,344,715.71
330 Other Professional Services	323,298.19	264,516.70		587,814.89
<b>Total Purchased Professional and Technical Services</b>	<b>\$1,713,521.83</b>	<b>\$1,219,008.77</b>		<b>\$2,932,530.60</b>
<b>500 Other Purchased Services</b>				
561 Tuition To Other School Districts Within the State	47,976.34	34,113.86		82,090.20
562 Tuition To Pennsylvania Charter Schools	52,356.48	202,689.81		255,046.29
563 Tuition To Nonpublic Schools	319,710.39	986,004.48		1,305,714.87
567 Tuition To Approved Private Schools (APS) and PA Chartered Schools for the Deaf and Blind	1,214,370.59	1,265,871.28		2,480,241.87
580 Travel	12.24	10.01		22.25
594 IU Payment By Withholding for Institutionalized Children's Programs – Special Classes	416.47	340.74		757.21
<b>Total Other Purchased Services</b>	<b>\$1,634,842.51</b>	<b>\$2,489,030.18</b>		<b>\$4,123,872.69</b>
<b>600 Supplies</b>				
610 General Supplies	34,771.76	21,083.78		55,855.54
640 Books and Periodicals	6,157.95	5,038.32		11,196.27
650 Supplies & Fees – Technology Related	45,110.46	40,035.64	3,822.00	88,968.10
<b>Total Supplies</b>	<b>\$86,040.17</b>	<b>\$66,157.74</b>	<b>\$3,822.00</b>	<b>\$156,019.91</b>
<b>700 Property</b>				
752 Capital Equipment – Original and Additional	8,538.76	6,986.26		15,525.02
<b>Total Property</b>	<b>\$8,538.76</b>	<b>\$6,986.26</b>		<b>\$15,525.02</b>
<b>Total 1200 Special Programs – Elementary / Secondary</b>	<b>\$13,604,823.27</b>	<b>\$9,757,992.23</b>	<b>\$1,167,905.37</b>	<b>\$24,530,720.87</b>

LEA : 125234502     Haverford Township SD

Printed 1/4/2022 9:16:37 AM

General Fund (10)

1220 Sensory Support

	<u>Elementary</u>	<u>Secondary</u>	<u>Federal</u>	<u>Total</u>
<b>100 <u>Personnel Services – Salaries</u></b>				
100 Personnel Services – Salaries	359,843.91	294,417.75		654,261.66
<b>Total Personnel Services – Salaries</b>	<b>\$359,843.91</b>	<b>\$294,417.75</b>		<b>\$654,261.66</b>
<b>200 <u>Personnel Services – Employee Benefits</u></b>				
210 Group Insurance – Contracted Provider	72,638.83	59,431.76		132,070.59
220 Social Security Contributions	26,036.83	21,302.86		47,339.69
230 PSERS Retirement Contributions	124,045.88	101,492.09		225,537.97
<b>Total Personnel Services – Employee Benefits</b>	<b>\$222,721.54</b>	<b>\$182,226.71</b>		<b>\$404,948.25</b>
<b>Total 1220 Sensory Support</b>	<b>\$582,565.45</b>	<b>\$476,644.46</b>		<b>\$1,059,209.91</b>



LEA : 125234502 Haverford Township SD

Printed 1/4/2022 9:16:37 AM

General Fund (10)

1240 Academic Support

	Elementary	Secondary	Federal	Total
<b>100 Personnel Services – Salaries</b>				
100 Personnel Services – Salaries	5,167,933.07	2,979,292.90	961,655.00	9,108,880.97
<b>Total Personnel Services – Salaries</b>	<b>\$5,167,933.07</b>	<b>\$2,979,292.90</b>	<b>\$961,655.00</b>	<b>\$9,108,880.97</b>
<b>200 Personnel Services – Employee Benefits</b>				
210 Group Insurance – Contracted Provider	1,913,793.11	1,022,236.46		2,936,029.57
220 Social Security Contributions	406,675.47	234,753.35	36,783.30	678,212.12
230 PSERS Retirement Contributions	1,881,328.23	1,091,411.66	165,645.07	3,138,384.96
291 Other Retirement Plans	5,526.09	12,774.85		18,300.94
<b>Total Personnel Services – Employee Benefits</b>	<b>\$4,207,322.90</b>	<b>\$2,361,176.32</b>	<b>\$202,428.37</b>	<b>\$6,770,927.59</b>
<b>300 Purchased Professional and Technical Services</b>				
330 Other Professional Services	323,298.19	264,516.70		587,814.89
<b>Total Purchased Professional and Technical Services</b>	<b>\$323,298.19</b>	<b>\$264,516.70</b>		<b>\$587,814.89</b>
<b>500 Other Purchased Services</b>				
561 Tuition To Other School Districts Within the State	47,976.34	34,113.86		82,090.20
562 Tuition To Pennsylvania Charter Schools	52,356.48	202,689.81		255,046.29
563 Tuition To Nonpublic Schools	319,710.39	986,004.48		1,305,714.87
580 Travel	12.24	10.01		22.25
<b>Total Other Purchased Services</b>	<b>\$420,055.45</b>	<b>\$1,222,818.16</b>		<b>\$1,642,873.61</b>
<b>600 Supplies</b>				
610 General Supplies	34,771.76	21,083.78		55,855.54
640 Books and Periodicals	6,157.95	5,038.32		11,196.27
650 Supplies & Fees – Technology Related	45,110.46	40,035.64	3,822.00	88,968.10
<b>Total Supplies</b>	<b>\$86,040.17</b>	<b>\$66,157.74</b>	<b>\$3,822.00</b>	<b>\$156,019.91</b>
<b>700 Property</b>				
752 Capital Equipment – Original and Additional	8,538.76	6,986.26		15,525.02
<b>Total Property</b>	<b>\$8,538.76</b>	<b>\$6,986.26</b>		<b>\$15,525.02</b>
<b>Total 1240 Academic Support</b>	<b>\$10,213,188.54</b>	<b>\$6,900,948.08</b>	<b>\$1,167,905.37</b>	<b>\$18,282,041.99</b>

LEA : 125234502     Haverford Township SD

Printed 1/4/2022 9:16:37 AM

General Fund (10)

1241 Learning Support – Public	Elementary	Secondary	Federal	Total
100 <u>Personnel Services – Salaries</u>				
100 Personnel Services – Salaries	4,593,306.20	2,842,471.65	961,655.00	8,397,432.85
<b>Total Personnel Services – Salaries</b>	<b>\$4,593,306.20</b>	<b>\$2,842,471.65</b>	<b>\$961,655.00</b>	<b>\$8,397,432.85</b>
200 <u>Personnel Services – Employee Benefits</u>				
210 Group Insurance – Contracted Provider	1,785,942.63	1,011,013.98		2,796,956.61
220 Social Security Contributions	364,405.00	224,402.50	36,783.30	625,590.80
230 PSERS Retirement Contributions	1,683,241.89	1,044,234.46	165,645.07	2,893,121.42
291 Other Retirement Plans	5,526.09	12,774.85		18,300.94
<b>Total Personnel Services – Employee Benefits</b>	<b>\$3,839,115.61</b>	<b>\$2,292,425.79</b>	<b>\$202,428.37</b>	<b>\$6,333,969.77</b>
300 <u>Purchased Professional and Technical Services</u>				
330 Other Professional Services	323,298.19	264,516.70		587,814.89
<b>Total Purchased Professional and Technical Services</b>	<b>\$323,298.19</b>	<b>\$264,516.70</b>		<b>\$587,814.89</b>
500 <u>Other Purchased Services</u>				
561 Tuition To Other School Districts Within the State	47,976.34	34,113.86		82,090.20
562 Tuition To Pennsylvania Charter Schools	52,356.48	202,689.81		255,046.29
563 Tuition To Nonpublic Schools	319,710.39	986,004.48		1,305,714.87
580 Travel	12.24	10.01		22.25
<b>Total Other Purchased Services</b>	<b>\$420,055.45</b>	<b>\$1,222,818.16</b>		<b>\$1,642,873.61</b>
600 <u>Supplies</u>				
610 General Supplies	30,363.22	17,476.80		47,840.02
640 Books and Periodicals	5,399.28	4,417.59		9,816.87
650 Supplies & Fees – Technology Related	45,110.46	40,035.64	3,822.00	88,968.10
<b>Total Supplies</b>	<b>\$80,872.96</b>	<b>\$61,930.03</b>	<b>\$3,822.00</b>	<b>\$146,624.99</b>
700 <u>Property</u>				
752 Capital Equipment – Original and Additional	8,538.76	6,986.26		15,525.02
<b>Total Property</b>	<b>\$8,538.76</b>	<b>\$6,986.26</b>		<b>\$15,525.02</b>
<b>Total 1241 Learning Support – Public</b>	<b>\$9,265,187.17</b>	<b>\$6,691,148.59</b>	<b>\$1,167,905.37</b>	<b>\$17,124,241.13</b>

LEA : 125234502     Haverford Township SD

Printed 1/4/2022 9:16:37 AM

General Fund (10)

1243 Gifted Support

	<u>Elementary</u>	<u>Secondary</u>	<u>Federal</u>	<u>Total</u>
<b>100 <u>Personnel Services – Salaries</u></b>				
100 Personnel Services – Salaries	574,626.87	136,821.25		711,448.12
<b>Total Personnel Services – Salaries</b>	<b>\$574,626.87</b>	<b>\$136,821.25</b>		<b>\$711,448.12</b>
<b>200 <u>Personnel Services – Employee Benefits</u></b>				
210 Group Insurance – Contracted Provider	127,850.48	11,222.48		139,072.96
220 Social Security Contributions	42,270.47	10,350.85		52,621.32
230 PSERS Retirement Contributions	198,086.34	47,177.20		245,263.54
<b>Total Personnel Services – Employee Benefits</b>	<b>\$368,207.29</b>	<b>\$68,750.53</b>		<b>\$436,957.82</b>
<b>600 <u>Supplies</u></b>				
610 General Supplies	4,408.54	3,606.98		8,015.52
640 Books and Periodicals	758.67	620.73		1,379.40
<b>Total Supplies</b>	<b>\$5,167.21</b>	<b>\$4,227.71</b>		<b>\$9,394.92</b>
<b>Total 1243 Gifted Support</b>	<b>\$948,001.37</b>	<b>\$209,799.49</b>		<b>\$1,157,800.86</b>

LEA : 125234502     Haverford Township SD

Printed 1/4/2022 9:16:37 AM

General Fund (10)

1280 Early Intervention Support	<u>Elementary</u>	<u>Secondary</u>	<u>Federal</u>	<u>Total</u>
300 <u>Purchased Professional and Technical Services</u>				
322 Professional Educational Services – lus	223,622.21			223,622.21
Total Purchased Professional and Technical Services	\$223,622.21			\$223,622.21
Total 1280 Early Intervention Support	\$223,622.21			\$223,622.21

LEA : 125234502     Haverford Township SD

Printed 1/4/2022 9:16:37 AM

General Fund (10)

1290 Special Programs - Other Support	Elementary	Secondary	Federal	Total
<b>100 <u>Personnel Services – Salaries</u></b>				
100 Personnel Services – Salaries	147,614.12	115,660.15		263,274.27
<b>Total Personnel Services – Salaries</b>	<b>\$147,614.12</b>	<b>\$115,660.15</b>		<b>\$263,274.27</b>
<b>200 <u>Personnel Services – Employee Benefits</u></b>				
220 Social Security Contributions	11,292.40	8,847.97		20,140.37
230 PSERS Retirement Contributions	45,152.06	35,187.48		80,339.54
<b>Total Personnel Services – Employee Benefits</b>	<b>\$56,444.46</b>	<b>\$44,035.45</b>		<b>\$100,479.91</b>
<b>300 <u>Purchased Professional and Technical Services</u></b>				
322 Professional Educational Services – Ius	1,166,601.43	954,492.07		2,121,093.50
<b>Total Purchased Professional and Technical Services</b>	<b>\$1,166,601.43</b>	<b>\$954,492.07</b>		<b>\$2,121,093.50</b>
<b>500 <u>Other Purchased Services</u></b>				
567 Tuition To Approved Private Schools (APS) and PA Chartered Schools for the Deaf and Blind	1,214,370.59	1,265,871.28		2,480,241.87
594 IU Payment By Withholding for Institutionalized Children’s Programs – Special Classes	416.47	340.74		757.21
<b>Total Other Purchased Services</b>	<b>\$1,214,787.06</b>	<b>\$1,266,212.02</b>		<b>\$2,480,999.08</b>
<b>Total 1290 Special Programs - Other Support</b>	<b>\$2,585,447.07</b>	<b>\$2,380,399.69</b>		<b>\$4,965,846.76</b>

LEA : 125234502     Haverford Township SD

Printed 1/4/2022 9:16:37 AM

General Fund (10)

1300 Vocational Education

500 Other Purchased Services

	<u>Elementary</u>	<u>Secondary</u>	<u>Federal</u>	<u>Total</u>
564 Tuition To Career and Technology Centers		837,312.35		837,312.35
<b>Total Other Purchased Services</b>		<b>\$837,312.35</b>		<b>\$837,312.35</b>
<b>Total 1300 Vocational Education</b>		<b>\$837,312.35</b>		<b>\$837,312.35</b>

LEA : 125234502     Haverford Township SD

Printed 1/4/2022 9:16:37 AM

General Fund (10)

1400 Other Instructional Programs – Elementary / Secondary	<u>Elementary</u>	<u>Secondary</u>	<u>Federal</u>	<u>Total</u>
<b>100 <u>Personnel Services – Salaries</u></b>				
100 Personnel Services – Salaries	106,814.62	168,579.09		275,393.71
<b>Total Personnel Services – Salaries</b>	<b>\$106,814.62</b>	<b>\$168,579.09</b>		<b>\$275,393.71</b>
<b>200 <u>Personnel Services – Employee Benefits</u></b>				
210 Group Insurance – Contracted Provider	18,802.86	45,713.40		64,516.26
220 Social Security Contributions	8,248.62	13,372.86		21,621.48
230 PSERS Retirement Contributions	41,116.67	61,373.91		102,490.58
<b>Total Personnel Services – Employee Benefits</b>	<b>\$68,168.15</b>	<b>\$120,460.17</b>		<b>\$188,628.32</b>
<b>300 <u>Purchased Professional and Technical Services</u></b>				
322 Professional Educational Services – Ius	34,424.86	28,165.80		62,590.66
<b>Total Purchased Professional and Technical Services</b>	<b>\$34,424.86</b>	<b>\$28,165.80</b>		<b>\$62,590.66</b>
<b>600 <u>Supplies</u></b>				
610 General Supplies	1,057.64			1,057.64
650 Supplies & Fees – Technology Related	21,739.58	17,786.92		39,526.50
<b>Total Supplies</b>	<b>\$22,797.22</b>	<b>\$17,786.92</b>		<b>\$40,584.14</b>
<b>Total 1400 Other Instructional Programs – Elementary / Secondary</b>	<b>\$232,204.85</b>	<b>\$334,991.98</b>		<b>\$567,196.83</b>

LEA : 125234502     Haverford Township SD

Printed 1/4/2022 9:16:37 AM

General Fund (10)

1420 Summer School	<u>Elementary</u>	<u>Secondary</u>	<u>Federal</u>	<u>Total</u>
<b>100 <u>Personnel Services – Salaries</u></b>				
100 Personnel Services – Salaries	6,575.32	2,700.00		9,275.32
<b>Total Personnel Services – Salaries</b>	<b>\$6,575.32</b>	<b>\$2,700.00</b>		<b>\$9,275.32</b>
<b>200 <u>Personnel Services – Employee Benefits</u></b>				
220 Social Security Contributions	503.02	340.42		843.44
230 PSERS Retirement Contributions	2,254.66	1,525.91		3,780.57
<b>Total Personnel Services – Employee Benefits</b>	<b>\$2,757.68</b>	<b>\$1,866.33</b>		<b>\$4,624.01</b>
<b>600 <u>Supplies</u></b>				
610 General Supplies	1,057.64			1,057.64
<b>Total Supplies</b>	<b>\$1,057.64</b>			<b>\$1,057.64</b>
<b>Total 1420 Summer School</b>	<b>\$10,390.64</b>	<b>\$4,566.33</b>		<b>\$14,956.97</b>



LEA : 125234502     Haverford Township SD

Printed 1/4/2022 9:16:37 AM

General Fund (10)

1430 Homebound Instruction	<u>Elementary</u>	<u>Secondary</u>	<u>Federal</u>	<u>Total</u>
<b>100 <u>Personnel Services – Salaries</u></b>				
100 Personnel Services – Salaries	9,394.86	7,686.70		17,081.56
<b>Total Personnel Services – Salaries</b>	<b>\$9,394.86</b>	<b>\$7,686.70</b>		<b>\$17,081.56</b>
<b>200 <u>Personnel Services – Employee Benefits</u></b>				
210 Group Insurance – Contracted Provider	76.84	62.87		139.71
220 Social Security Contributions	717.62	587.14		1,304.76
230 PSERS Retirement Contributions	1,607.17	1,314.96		2,922.13
<b>Total Personnel Services – Employee Benefits</b>	<b>\$2,401.63</b>	<b>\$1,964.97</b>		<b>\$4,366.60</b>
<b>300 <u>Purchased Professional and Technical Services</u></b>				
322 Professional Educational Services – Ius	34,424.86	28,165.80		62,590.66
<b>Total Purchased Professional and Technical Services</b>	<b>\$34,424.86</b>	<b>\$28,165.80</b>		<b>\$62,590.66</b>
<b>Total 1430 Homebound Instruction</b>	<b>\$46,221.35</b>	<b>\$37,817.47</b>		<b>\$84,038.82</b>

LEA : 125234502     Haverford Township SD

Printed 1/4/2022 9:16:37 AM

General Fund (10)

1440 Alternative Regular Education Programs	<u>Elementary</u>	<u>Secondary</u>	<u>Federal</u>	<u>Total</u>
<b>100 <u>Personnel Services – Salaries</u></b>				
100 Personnel Services – Salaries	36,472.28	80,774.67		117,246.95
<b>Total Personnel Services – Salaries</b>	<b>\$36,472.28</b>	<b>\$80,774.67</b>		<b>\$117,246.95</b>
<b>200 <u>Personnel Services – Employee Benefits</u></b>				
210 Group Insurance – Contracted Provider	3,248.52	18,154.20		21,402.72
220 Social Security Contributions	3,033.52	6,816.95		9,850.47
230 PSERS Retirement Contributions	12,696.28	27,953.04		40,649.32
<b>Total Personnel Services – Employee Benefits</b>	<b>\$18,978.32</b>	<b>\$52,924.19</b>		<b>\$71,902.51</b>
<b>600 <u>Supplies</u></b>				
650 Supplies & Fees – Technology Related	21,739.58	17,786.92		39,526.50
<b>Total Supplies</b>	<b>\$21,739.58</b>	<b>\$17,786.92</b>		<b>\$39,526.50</b>
<b>Total 1440 Alternative Regular Education Programs</b>	<b>\$77,190.18</b>	<b>\$151,485.78</b>		<b>\$228,675.96</b>

LEA : 125234502     Haverford Township SD

Printed 1/4/2022 9:16:37 AM

General Fund (10)

1442 Alternative Education Programs	<u>Elementary</u>	<u>Secondary</u>	<u>Federal</u>	<u>Total</u>
<b>100 <u>Personnel Services – Salaries</u></b>				
100 Personnel Services – Salaries	36,472.28	80,774.67		117,246.95
<b>Total Personnel Services – Salaries</b>	<b>\$36,472.28</b>	<b>\$80,774.67</b>		<b>\$117,246.95</b>
<b>200 <u>Personnel Services – Employee Benefits</u></b>				
210 Group Insurance – Contracted Provider	3,248.52	18,154.20		21,402.72
220 Social Security Contributions	3,033.52	6,816.95		9,850.47
230 PSERS Retirement Contributions	12,696.28	27,953.04		40,649.32
<b>Total Personnel Services – Employee Benefits</b>	<b>\$18,978.32</b>	<b>\$52,924.19</b>		<b>\$71,902.51</b>
<b>600 <u>Supplies</u></b>				
650 Supplies & Fees – Technology Related	21,739.58	17,786.92		39,526.50
<b>Total Supplies</b>	<b>\$21,739.58</b>	<b>\$17,786.92</b>		<b>\$39,526.50</b>
<b>Total 1442 Alternative Education Programs</b>	<b>\$77,190.18</b>	<b>\$151,485.78</b>		<b>\$228,675.96</b>

LEA : 125234502     Haverford Township SD

Printed 1/4/2022 9:16:37 AM

General Fund (10)

1490 Additional Other Instructional Programs	<u>Elementary</u>	<u>Secondary</u>	<u>Federal</u>	<u>Total</u>
100 <u>Personnel Services – Salaries</u>				
100 Personnel Services – Salaries	54,372.16	77,417.72		131,789.88
<b>Total Personnel Services – Salaries</b>	<b>\$54,372.16</b>	<b>\$77,417.72</b>		<b>\$131,789.88</b>
200 <u>Personnel Services – Employee Benefits</u>				
210 Group Insurance – Contracted Provider	15,477.50	27,496.33		42,973.83
220 Social Security Contributions	3,994.46	5,628.35		9,622.81
230 PSERS Retirement Contributions	24,558.56	30,580.00		55,138.56
<b>Total Personnel Services – Employee Benefits</b>	<b>\$44,030.52</b>	<b>\$63,704.68</b>		<b>\$107,735.20</b>
<b>Total 1490 Additional Other Instructional Programs</b>	<b>\$98,402.68</b>	<b>\$141,122.40</b>		<b>\$239,525.08</b>

LEA : 125234502     Haverford Township SD

Printed 1/4/2022 9:16:37 AM

General Fund (10)

1500 Nonpublic School Programs

	<u>Elementary</u>	<u>Secondary</u>	<u>Federal</u>	<u>Total</u>
300 <u>Purchased Professional and Technical Services</u>				
322 Professional Educational Services – lus				5,680.00
Total Purchased Professional and Technical Services				\$5,680.00
Total 1500 Nonpublic School Programs				\$5,680.00

LEA : 125234502     Haverford Township SD

Printed 1/4/2022 9:16:37 AM

General Fund (10)

1600 Adult Education Programs	<u>Elementary</u>	<u>Secondary</u>	<u>Federal</u>	<u>Total</u>
500 <u>Other Purchased Services</u>				
566 Tuition To Institutions of Higher Education and Technical Institutes				1,351,647.00
Total Other Purchased Services				\$1,351,647.00
Total 1600 Adult Education Programs				\$1,351,647.00

LEA : 125234502     Haverford Township SD

Printed 1/4/2022 9:16:46 AM

General Fund (10)

2000 Support Services

Total

100	<u>Personnel Services – Salaries</u>	
100	Personnel Services – Salaries	17,342,683.69
Total Personnel Services – Salaries		\$17,342,683.69
200	<u>Personnel Services – Employee Benefits</u>	
210	Group Insurance – Contracted Provider	3,641,398.67
220	Social Security Contributions	1,285,833.73
230	PSERS Retirement Contributions	5,920,357.84
240	Tuition Reimbursement	222,768.90
250	Unemployment Compensation	105,424.44
291	Other Retirement Plans	114,395.31
Total Personnel Services – Employee Benefits		\$11,290,178.89
300	<u>Purchased Professional and Technical Services</u>	
322	Professional Educational Services – Ius	11,179.82
323	Professional Educational Services – Other Educational Agencies	1,645.00
329	Professional Educational Services – Other	72,283.98
330	Other Professional Services	946,414.10
340	Technical Services	163,412.26
Total Purchased Professional and Technical Services		\$1,194,935.16
400	<u>Purchased Property Services</u>	
410	Cleaning Services	55,133.39
420	Utility Services	768,808.84
430	Repairs and Maintenance Services	1,048,089.00
440	Rentals	919,393.34
Total Purchased Property Services		\$2,791,424.57
500	<u>Other Purchased Services</u>	
513	Contracted Carriers	12,795.00
516	Student Transportation Services From the IU	2,963.10
519	Student Transportation Services From Other Sources	1,213.00
520	Insurance – General	104,111.00
522	Automotive Liability Insurance	69,719.00
523	General Property and Liability Insurance	269,465.61
530	Communications	215,907.93
550	Printing and Binding	14,548.88
580	Travel	7,989.10
591	Services Purchased Locally	1,049.00
595	IU Payments By Withholding	110,528.05
Total Other Purchased Services		\$810,289.67
600	<u>Supplies</u>	
610	General Supplies	947,745.19
620	Energy	347,523.98
630	Food	6,865.00
640	Books and Periodicals	82,167.40
650	Supplies & Fees – Technology Related	589,653.09

LEA : 125234502     Haverford Township SD

Printed 1/4/2022 9:16:46 AM

General Fund (10)

2000 Support Services

	<u>Total</u>
<b>Total Supplies</b>	<b>\$1,973,954.66</b>
<b>700 <u>Property</u></b>	
752 Capital Equipment – Original and Additional	91,087.99
758 Capitalized Technology Software - Original	10,860.87
762 Capitalized Equipment - Replacement	142,822.40
<b>Total Property</b>	<b>\$244,771.26</b>
<b>800 <u>Other Objects</u></b>	
810 Dues and Fees	257,029.31
<b>Total Other Objects</b>	<b>\$257,029.31</b>
<b>Total 2000 Support Services</b>	<b>\$35,905,267.21</b>



LEA : 125234502     Haverford Township SD

Printed 1/4/2022 9:16:46 AM

General Fund (10)

2100 Support Services – Students	Elementary	Secondary	Federal	Total
100 <u>Personnel Services – Salaries</u>				
100 Personnel Services – Salaries	1,604,309.59	1,745,109.21		3,587,957.34
<b>Total Personnel Services – Salaries</b>	<b>\$1,604,309.59</b>	<b>\$1,745,109.21</b>		<b>\$3,587,957.34</b>
200 <u>Personnel Services – Employee Benefits</u>				
210 Group Insurance – Contracted Provider	375,343.58	393,995.07		821,595.36
220 Social Security Contributions	118,924.45	129,713.32		266,125.55
230 PSERS Retirement Contributions	552,479.28	601,041.17		1,235,747.53
291 Other Retirement Plans	825.00	675.00		1,500.00
<b>Total Personnel Services – Employee Benefits</b>	<b>\$1,047,572.31</b>	<b>\$1,125,424.56</b>		<b>\$2,324,968.44</b>
300 <u>Purchased Professional and Technical Services</u>				
330 Other Professional Services	5,231.28	4,280.14		9,511.42
<b>Total Purchased Professional and Technical Services</b>	<b>\$5,231.28</b>	<b>\$4,280.14</b>		<b>\$9,511.42</b>
500 <u>Other Purchased Services</u>				
580 Travel	216.29	176.96		1,213.10
<b>Total Other Purchased Services</b>	<b>\$216.29</b>	<b>\$176.96</b>		<b>\$1,213.10</b>
600 <u>Supplies</u>				
610 General Supplies	135,910.47	111,530.35		247,440.82
640 Books and Periodicals	374.00	306.00		680.00
650 Supplies & Fees – Technology Related	234,356.14	191,745.94		426,102.08
<b>Total Supplies</b>	<b>\$370,640.61</b>	<b>\$303,582.29</b>		<b>\$674,222.90</b>
800 <u>Other Objects</u>				
810 Dues and Fees	461.45	4,377.55		4,839.00
<b>Total Other Objects</b>	<b>\$461.45</b>	<b>\$4,377.55</b>		<b>\$4,839.00</b>
<b>Total 2100 Support Services – Students</b>	<b>\$3,028,431.53</b>	<b>\$3,182,950.71</b>		<b>\$6,602,712.20</b>

LEA : 125234502     Haverford Township SD

Printed 1/4/2022 9:16:46 AM

General Fund (10)

2110 Supervision of Student Services	Elementary	Secondary	Federal	Total
100 <u>Personnel Services – Salaries</u>				
100 Personnel Services – Salaries	396,682.79	361,286.42		757,969.21
<b>Total Personnel Services – Salaries</b>	<b>\$396,682.79</b>	<b>\$361,286.42</b>		<b>\$757,969.21</b>
200 <u>Personnel Services – Employee Benefits</u>				
210 Group Insurance – Contracted Provider	102,441.15	88,562.19		191,003.34
220 Social Security Contributions	29,134.72	26,689.90		55,824.62
230 PSERS Retirement Contributions	136,453.17	124,489.92		260,943.09
291 Other Retirement Plans	825.00	675.00		1,500.00
<b>Total Personnel Services – Employee Benefits</b>	<b>\$268,854.04</b>	<b>\$240,417.01</b>		<b>\$509,271.05</b>
500 <u>Other Purchased Services</u>				
580 Travel	216.29	176.96		393.25
<b>Total Other Purchased Services</b>	<b>\$216.29</b>	<b>\$176.96</b>		<b>\$393.25</b>
600 <u>Supplies</u>				
610 General Supplies	123,574.77	101,106.62		224,681.39
640 Books and Periodicals	374.00	306.00		680.00
650 Supplies & Fees – Technology Related	234,356.14	191,745.94		426,102.08
<b>Total Supplies</b>	<b>\$358,304.91</b>	<b>\$293,158.56</b>		<b>\$651,463.47</b>
800 <u>Other Objects</u>				
810 Dues and Fees	461.45	377.55		839.00
<b>Total Other Objects</b>	<b>\$461.45</b>	<b>\$377.55</b>		<b>\$839.00</b>
<b>Total 2110 Supervision of Student Services</b>	<b>\$1,024,519.48</b>	<b>\$895,416.50</b>		<b>\$1,919,935.98</b>

LEA : 125234502     Haverford Township SD

Printed 1/4/2022 9:16:46 AM

General Fund (10)

2111 Supervision of Student Services – Head of Component

	<u>Elementary</u>	<u>Secondary</u>	<u>Federal</u>	<u>Total</u>
<b>100 <u>Personnel Services – Salaries</u></b>				
100 Personnel Services – Salaries	396,682.79	361,286.42		757,969.21
<b>Total Personnel Services – Salaries</b>	<b>\$396,682.79</b>	<b>\$361,286.42</b>		<b>\$757,969.21</b>
<b>200 <u>Personnel Services – Employee Benefits</u></b>				
210 Group Insurance – Contracted Provider	102,441.15	88,562.19		191,003.34
220 Social Security Contributions	29,134.72	26,689.90		55,824.62
230 PSERS Retirement Contributions	136,453.17	124,489.92		260,943.09
291 Other Retirement Plans	825.00	675.00		1,500.00
<b>Total Personnel Services – Employee Benefits</b>	<b>\$268,854.04</b>	<b>\$240,417.01</b>		<b>\$509,271.05</b>
<b>500 <u>Other Purchased Services</u></b>				
580 Travel	216.29	176.96		393.25
<b>Total Other Purchased Services</b>	<b>\$216.29</b>	<b>\$176.96</b>		<b>\$393.25</b>
<b>600 <u>Supplies</u></b>				
610 General Supplies	123,574.77	101,106.62		224,681.39
640 Books and Periodicals	374.00	306.00		680.00
650 Supplies & Fees – Technology Related	234,356.14	191,745.94		426,102.08
<b>Total Supplies</b>	<b>\$358,304.91</b>	<b>\$293,158.56</b>		<b>\$651,463.47</b>
<b>800 <u>Other Objects</u></b>				
810 Dues and Fees	461.45	377.55		839.00
<b>Total Other Objects</b>	<b>\$461.45</b>	<b>\$377.55</b>		<b>\$839.00</b>
<b>Total 2111 Supervision of Student Services – Head of Component</b>	<b>\$1,024,519.48</b>	<b>\$895,416.50</b>		<b>\$1,919,935.98</b>

LEA : 125234502     Haverford Township SD

Printed 1/4/2022 9:16:46 AM

General Fund (10)

2120 Guidance Services	Elementary	Secondary	Federal	Total
<b>100 Personnel Services – Salaries</b>				
100 Personnel Services – Salaries	842,733.98	1,085,274.11		1,928,008.09
<b>Total Personnel Services – Salaries</b>	<b>\$842,733.98</b>	<b>\$1,085,274.11</b>		<b>\$1,928,008.09</b>
<b>200 Personnel Services – Employee Benefits</b>				
210 Group Insurance – Contracted Provider	180,834.56	230,104.65		410,939.21
220 Social Security Contributions	62,728.85	80,882.71		143,611.56
230 PSERS Retirement Contributions	290,679.28	373,994.75		664,674.03
<b>Total Personnel Services – Employee Benefits</b>	<b>\$534,242.69</b>	<b>\$684,982.11</b>		<b>\$1,219,224.80</b>
<b>600 Supplies</b>				
610 General Supplies	982.68	1,134.90		2,117.58
<b>Total Supplies</b>	<b>\$982.68</b>	<b>\$1,134.90</b>		<b>\$2,117.58</b>
<b>800 Other Objects</b>				
810 Dues and Fees		4,000.00		4,000.00
<b>Total Other Objects</b>		<b>\$4,000.00</b>		<b>\$4,000.00</b>
<b>Total 2120 Guidance Services</b>	<b>\$1,377,959.35</b>	<b>\$1,775,391.12</b>		<b>\$3,153,350.47</b>

LEA : 125234502     Haverford Township SD

Printed 1/4/2022 9:16:46 AM

General Fund (10)

2140 Psychological Services	Elementary	Secondary	Federal	Total
100 Personnel Services – Salaries				
100 Personnel Services – Salaries	364,892.82	298,548.68		663,441.50
Total Personnel Services – Salaries	\$364,892.82	\$298,548.68		\$663,441.50
200 Personnel Services – Employee Benefits				
210 Group Insurance – Contracted Provider	92,067.87	75,328.23		167,396.10
220 Social Security Contributions	27,060.88	22,140.71		49,201.59
230 PSERS Retirement Contributions	125,346.83	102,556.50		227,903.33
Total Personnel Services – Employee Benefits	\$244,475.58	\$200,025.44		\$444,501.02
300 Purchased Professional and Technical Services				
330 Other Professional Services	5,231.28	4,280.14		9,511.42
Total Purchased Professional and Technical Services	\$5,231.28	\$4,280.14		\$9,511.42
600 Supplies				
610 General Supplies	11,353.02	9,288.83		20,641.85
Total Supplies	\$11,353.02	\$9,288.83		\$20,641.85
Total 2140 Psychological Services	\$625,952.70	\$512,143.09		\$1,138,095.79

LEA : 125234502     Haverford Township SD

Printed 1/4/2022 9:16:46 AM

General Fund (10)

2160 Social Work Services	<u>Elementary</u>	<u>Secondary</u>	<u>Federal</u>	<u>Total</u>
100 <u>Personnel Services – Salaries</u>				
100 Personnel Services – Salaries				212,833.60
Total Personnel Services – Salaries				\$212,833.60
200 <u>Personnel Services – Employee Benefits</u>				
210 Group Insurance – Contracted Provider				52,256.71
220 Social Security Contributions				15,521.34
230 PSERS Retirement Contributions				73,361.70
Total Personnel Services – Employee Benefits				\$141,139.75
500 <u>Other Purchased Services</u>				
580 Travel				819.85
Total Other Purchased Services				\$819.85
Total 2160 Social Work Services				\$354,793.20

LEA : 125234502     Haverford Township SD

Printed 1/4/2022 9:16:46 AM

General Fund (10)

2170 Student Accounting Services	<u>Elementary</u>	<u>Secondary</u>	<u>Federal</u>	<u>Total</u>
100 <u>Personnel Services – Salaries</u>				
100 Personnel Services – Salaries				25,704.94
Total Personnel Services – Salaries				\$25,704.94
200 <u>Personnel Services – Employee Benefits</u>				
220 Social Security Contributions				1,966.44
230 PSERS Retirement Contributions				8,865.38
Total Personnel Services – Employee Benefits				\$10,831.82
Total 2170 Student Accounting Services				\$36,536.76

LEA : 125234502     Haverford Township SD

Printed 1/4/2022 9:16:46 AM

General Fund (10)

2200 Support Services – Instructional Staff

	Elementary	Secondary	Federal	Total
<b>100 Personnel Services – Salaries</b>				
100 Personnel Services – Salaries	1,494,409.97	779,111.84	38,290.25	2,311,812.06
<b>Total Personnel Services – Salaries</b>	<b>\$1,494,409.97</b>	<b>\$779,111.84</b>	<b>\$38,290.25</b>	<b>\$2,311,812.06</b>
<b>200 Personnel Services – Employee Benefits</b>				
210 Group Insurance – Contracted Provider	257,024.15	123,574.53		380,598.68
220 Social Security Contributions	110,546.57	56,254.32	2,835.65	169,636.54
230 PSERS Retirement Contributions	513,039.40	263,931.46	13,213.88	790,184.74
240 Tuition Reimbursement	104,835.54	117,933.36		222,768.90
291 Other Retirement Plans	3,702.11	11,460.65		15,162.76
<b>Total Personnel Services – Employee Benefits</b>	<b>\$989,147.77</b>	<b>\$573,154.32</b>	<b>\$16,049.53</b>	<b>\$1,578,351.62</b>
<b>300 Purchased Professional and Technical Services</b>				
322 Professional Educational Services – lus	147.54		11,032.28	11,179.82
323 Professional Educational Services – Other Educational Agencies	162.25	132.75		295.00
330 Other Professional Services	12,390.23	10,725.48	36,470.00	59,585.71
340 Technical Services	40,048.25	32,766.75		72,815.00
<b>Total Purchased Professional and Technical Services</b>	<b>\$52,748.27</b>	<b>\$43,624.98</b>	<b>\$47,502.28</b>	<b>\$143,875.53</b>
<b>500 Other Purchased Services</b>				
580 Travel	156.06	252.66		408.72
591 Services Purchased Locally	576.95	472.05		1,049.00
<b>Total Other Purchased Services</b>	<b>\$733.01</b>	<b>\$724.71</b>		<b>\$1,457.72</b>
<b>600 Supplies</b>				
610 General Supplies	4,073.56	16,914.59		20,988.15
640 Books and Periodicals	45,851.40	24,106.25	1,542.92	71,500.57
650 Supplies & Fees – Technology Related	23,423.25	28,208.19		51,631.44
<b>Total Supplies</b>	<b>\$73,348.21</b>	<b>\$69,229.03</b>	<b>\$1,542.92</b>	<b>\$144,120.16</b>
<b>700 Property</b>				
758 Capitalized Technology Software - Original	5,026.74	4,234.13		9,260.87
762 Capitalized Equipment - Replacement	8,599.88	17,199.76		25,799.64
<b>Total Property</b>	<b>\$13,626.62</b>	<b>\$21,433.89</b>		<b>\$35,060.51</b>
<b>800 Other Objects</b>				
810 Dues and Fees	6,823.15	5,144.85		11,968.00
<b>Total Other Objects</b>	<b>\$6,823.15</b>	<b>\$5,144.85</b>		<b>\$11,968.00</b>
<b>Total 2200 Support Services – Instructional Staff</b>	<b>\$2,630,837.00</b>	<b>\$1,492,423.62</b>	<b>\$103,384.98</b>	<b>\$4,226,645.60</b>



LEA : 125234502     Haverford Township SD

Printed 1/4/2022 9:16:46 AM

General Fund (10)

2220 Technology Support Services

	Elementary	Secondary	Federal	Total
<b>100 Personnel Services – Salaries</b>				
100 Personnel Services – Salaries	237,729.53	228,564.73		466,294.26
<b>Total Personnel Services – Salaries</b>	<b>\$237,729.53</b>	<b>\$228,564.73</b>		<b>\$466,294.26</b>
<b>200 Personnel Services – Employee Benefits</b>				
210 Group Insurance – Contracted Provider	54,162.65	50,913.78		105,076.43
220 Social Security Contributions	16,557.49	16,188.69		32,746.18
230 PSERS Retirement Contributions	80,128.65	77,299.34		157,427.99
291 Other Retirement Plans	3,053.79	10,930.21		13,984.00
<b>Total Personnel Services – Employee Benefits</b>	<b>\$153,902.58</b>	<b>\$155,332.02</b>		<b>\$309,234.60</b>
<b>300 Purchased Professional and Technical Services</b>				
330 Other Professional Services	3,559.53	2,912.35		6,471.88
340 Technical Services	40,048.25	32,766.75		72,815.00
<b>Total Purchased Professional and Technical Services</b>	<b>\$43,607.78</b>	<b>\$35,679.10</b>		<b>\$79,286.88</b>
<b>600 Supplies</b>				
610 General Supplies	795.42	6,124.64		6,920.06
640 Books and Periodicals	192.50	157.50		350.00
650 Supplies & Fees – Technology Related	23,349.00	28,147.44		51,496.44
<b>Total Supplies</b>	<b>\$24,336.92</b>	<b>\$34,429.58</b>		<b>\$58,766.50</b>
<b>700 Property</b>				
758 Capitalized Technology Software - Original	5,026.74	4,234.13		9,260.87
<b>Total Property</b>	<b>\$5,026.74</b>	<b>\$4,234.13</b>		<b>\$9,260.87</b>
<b>800 Other Objects</b>				
810 Dues and Fees	6,131.95	5,017.05		11,149.00
<b>Total Other Objects</b>	<b>\$6,131.95</b>	<b>\$5,017.05</b>		<b>\$11,149.00</b>
<b>Total 2220 Technology Support Services</b>	<b>\$470,735.50</b>	<b>\$463,256.61</b>		<b>\$933,992.11</b>

LEA : 125234502     Haverford Township SD

Printed 1/4/2022 9:16:46 AM

General Fund (10)

2240 Computer-Assisted Instruction Support Services	<u>Elementary</u>	<u>Secondary</u>	<u>Federal</u>	<u>Total</u>
100 <u>Personnel Services – Salaries</u>				
100 Personnel Services – Salaries	185,176.27	95,320.12		280,496.39
Total Personnel Services – Salaries	\$185,176.27	\$95,320.12		\$280,496.39
200 <u>Personnel Services – Employee Benefits</u>				
210 Group Insurance – Contracted Provider	67,476.74	27,877.78		95,354.52
220 Social Security Contributions	14,398.96	6,977.15		21,376.11
230 PSERS Retirement Contributions	63,656.96	30,866.83		94,523.79
Total Personnel Services – Employee Benefits	\$145,532.66	\$65,721.76		\$211,254.42
600 <u>Supplies</u>				
610 General Supplies		9,748.39		9,748.39
Total Supplies		\$9,748.39		\$9,748.39
Total 2240 Computer-Assisted Instruction Support Services	\$330,708.93	\$170,790.27		\$501,499.20

LEA : 125234502     Haverford Township SD

Printed 1/4/2022 9:16:46 AM

General Fund (10)

2250 School Library Services	Elementary	Secondary	Federal	Total
100 <u>Personnel Services – Salaries</u>				
100 Personnel Services – Salaries	578,484.58	153,060.39		731,544.97
<b>Total Personnel Services – Salaries</b>	<b>\$578,484.58</b>	<b>\$153,060.39</b>		<b>\$731,544.97</b>
200 <u>Personnel Services – Employee Benefits</u>				
210 Group Insurance – Contracted Provider	74,792.78	14,675.61		89,468.39
220 Social Security Contributions	43,977.24	11,555.30		55,532.54
230 PSERS Retirement Contributions	199,875.63	52,086.71		251,962.34
<b>Total Personnel Services – Employee Benefits</b>	<b>\$318,645.65</b>	<b>\$78,317.62</b>		<b>\$396,963.27</b>
600 <u>Supplies</u>				
610 General Supplies	2,968.10	787.90		3,756.00
640 Books and Periodicals	44,778.01	23,923.89		68,701.90
<b>Total Supplies</b>	<b>\$47,746.11</b>	<b>\$24,711.79</b>		<b>\$72,457.90</b>
700 <u>Property</u>				
762 Capitalized Equipment - Replacement	8,599.88	17,199.76		25,799.64
<b>Total Property</b>	<b>\$8,599.88</b>	<b>\$17,199.76</b>		<b>\$25,799.64</b>
<b>Total 2250 School Library Services</b>	<b>\$953,476.22</b>	<b>\$273,289.56</b>		<b>\$1,226,765.78</b>

LEA : 125234502     Haverford Township SD

Printed 1/4/2022 9:16:46 AM

General Fund (10)

2260 Instruction and Curriculum Development Services	<u>Elementary</u>	<u>Secondary</u>	<u>Federal</u>	<u>Total</u>
100 <u>Personnel Services – Salaries</u>				
100 Personnel Services – Salaries	493,019.59	302,166.60		795,186.19
<b>Total Personnel Services – Salaries</b>	<b>\$493,019.59</b>	<b>\$302,166.60</b>		<b>\$795,186.19</b>
200 <u>Personnel Services – Employee Benefits</u>				
210 Group Insurance – Contracted Provider	60,591.98	30,107.36		90,699.34
220 Social Security Contributions	35,612.88	21,533.18		57,146.06
230 PSERS Retirement Contributions	169,378.16	103,678.58		273,056.74
291 Other Retirement Plans	648.32	530.44		1,178.76
<b>Total Personnel Services – Employee Benefits</b>	<b>\$266,231.34</b>	<b>\$155,849.56</b>		<b>\$422,080.90</b>
300 <u>Purchased Professional and Technical Services</u>				
330 Other Professional Services	4,435.19	3,628.79		8,063.98
<b>Total Purchased Professional and Technical Services</b>	<b>\$4,435.19</b>	<b>\$3,628.79</b>		<b>\$8,063.98</b>
500 <u>Other Purchased Services</u>				
580 Travel	7.56	6.19		13.75
591 Services Purchased Locally	576.95	472.05		1,049.00
<b>Total Other Purchased Services</b>	<b>\$584.51</b>	<b>\$478.24</b>		<b>\$1,062.75</b>
600 <u>Supplies</u>				
610 General Supplies	310.04	253.66		563.70
650 Supplies & Fees – Technology Related	74.25	60.75		135.00
<b>Total Supplies</b>	<b>\$384.29</b>	<b>\$314.41</b>		<b>\$698.70</b>
800 <u>Other Objects</u>				
810 Dues and Fees	691.20	127.80		819.00
<b>Total Other Objects</b>	<b>\$691.20</b>	<b>\$127.80</b>		<b>\$819.00</b>
<b>Total 2260 Instruction and Curriculum Development Services</b>	<b>\$765,346.12</b>	<b>\$462,565.40</b>		<b>\$1,227,911.52</b>

LEA : 125234502     Haverford Township SD

Printed 1/4/2022 9:16:46 AM

General Fund (10)

2270 Instructional Staff Professional Development Services	Elementary	Secondary	Federal	Total
<b>100 Personnel Services – Salaries</b>				
100 Personnel Services – Salaries			38,290.25	38,290.25
<b>Total Personnel Services – Salaries</b>			<b>\$38,290.25</b>	<b>\$38,290.25</b>
<b>200 Personnel Services – Employee Benefits</b>				
220 Social Security Contributions			2,835.65	2,835.65
230 PSERS Retirement Contributions			13,213.88	13,213.88
240 Tuition Reimbursement	104,835.54	117,933.36		222,768.90
<b>Total Personnel Services – Employee Benefits</b>	<b>\$104,835.54</b>	<b>\$117,933.36</b>	<b>\$16,049.53</b>	<b>\$238,818.43</b>
<b>300 Purchased Professional and Technical Services</b>				
322 Professional Educational Services – Ius	147.54			147.54
323 Professional Educational Services – Other Educational Agencies	162.25	132.75		295.00
330 Other Professional Services	4,395.51	4,184.34	36,470.00	45,049.85
<b>Total Purchased Professional and Technical Services</b>	<b>\$4,705.30</b>	<b>\$4,317.09</b>	<b>\$36,470.00</b>	<b>\$45,492.39</b>
<b>500 Other Purchased Services</b>				
580 Travel	148.50	246.47		394.97
<b>Total Other Purchased Services</b>	<b>\$148.50</b>	<b>\$246.47</b>		<b>\$394.97</b>
<b>600 Supplies</b>				
640 Books and Periodicals	880.89	24.86	1,542.92	2,448.67
<b>Total Supplies</b>	<b>\$880.89</b>	<b>\$24.86</b>	<b>\$1,542.92</b>	<b>\$2,448.67</b>
<b>Total 2270 Instructional Staff Professional Development Services</b>	<b>\$110,570.23</b>	<b>\$122,521.78</b>	<b>\$92,352.70</b>	<b>\$325,444.71</b>

LEA : 125234502     Haverford Township SD

Printed 1/4/2022 9:16:46 AM

General Fund (10)

2280 Nonpublic Support Services

	<u>Elementary</u>	<u>Secondary</u>	<u>Federal</u>	<u>Total</u>
300 <u>Purchased Professional and Technical Services</u>				
322 Professional Educational Services – lus			11,032.28	11,032.28
<b>Total Purchased Professional and Technical Services</b>			<b>\$11,032.28</b>	<b>\$11,032.28</b>
<b>Total 2280 Nonpublic Support Services</b>			<b>\$11,032.28</b>	<b>\$11,032.28</b>

LEA : 125234502     Haverford Township SD

Printed 1/4/2022 9:16:46 AM

General Fund (10)

2300 Support Services – Administration	Elementary	Secondary	Federal	Total
<b>100 Personnel Services – Salaries</b>				
100 Personnel Services – Salaries	1,347,265.34	1,210,672.46		3,031,398.10
<b>Total Personnel Services – Salaries</b>	<b>\$1,347,265.34</b>	<b>\$1,210,672.46</b>		<b>\$3,031,398.10</b>
<b>200 Personnel Services – Employee Benefits</b>				
210 Group Insurance – Contracted Provider	255,810.84	220,408.22		593,075.87
220 Social Security Contributions	99,734.56	89,485.99		217,800.16
230 PSERS Retirement Contributions	462,835.51	415,823.30		1,035,893.38
291 Other Retirement Plans	3,360.16	8,120.00		15,398.20
<b>Total Personnel Services – Employee Benefits</b>	<b>\$821,741.07</b>	<b>\$733,837.51</b>		<b>\$1,862,167.61</b>
<b>300 Purchased Professional and Technical Services</b>				
330 Other Professional Services	1,693.50			435,926.67
340 Technical Services		16,407.72		16,536.73
<b>Total Purchased Professional and Technical Services</b>	<b>\$1,693.50</b>	<b>\$16,407.72</b>		<b>\$452,463.40</b>
<b>400 Purchased Property Services</b>				
440 Rentals		14,675.47		15,025.47
<b>Total Purchased Property Services</b>		<b>\$14,675.47</b>		<b>\$15,025.47</b>
<b>500 Other Purchased Services</b>				
520 Insurance – General				104,111.00
530 Communications				8,227.01
550 Printing and Binding		14,548.88		14,548.88
580 Travel	595.00	150.00		1,007.50
<b>Total Other Purchased Services</b>	<b>\$595.00</b>	<b>\$14,698.88</b>		<b>\$127,894.39</b>
<b>600 Supplies</b>				
610 General Supplies	130.60	15,686.83		22,321.05
630 Food		5,161.06		6,865.00
640 Books and Periodicals	177.07	1,044.14		1,562.31
650 Supplies & Fees – Technology Related				21,000.00
<b>Total Supplies</b>	<b>\$307.67</b>	<b>\$21,892.03</b>		<b>\$51,748.36</b>
<b>700 Property</b>				
752 Capital Equipment – Original and Additional	149.50	3,243.79		3,933.29
762 Capitalized Equipment - Replacement		19,789.56		19,789.56
<b>Total Property</b>	<b>\$149.50</b>	<b>\$23,033.35</b>		<b>\$23,722.85</b>
<b>800 Other Objects</b>				
810 Dues and Fees	3,949.17	4,898.61		226,260.95
<b>Total Other Objects</b>	<b>\$3,949.17</b>	<b>\$4,898.61</b>		<b>\$226,260.95</b>
<b>Total 2300 Support Services – Administration</b>	<b>\$2,175,701.25</b>	<b>\$2,040,116.03</b>		<b>\$5,790,681.13</b>

LEA : 125234502     Haverford Township SD

Printed 1/4/2022 9:16:46 AM

General Fund (10)

2310 Board Services

Elementary                      Secondary                      Federal                      Total

300 <u>Purchased Professional and Technical Services</u>				
330 Other Professional Services				44,100.00
<b>Total Purchased Professional and Technical Services</b>				<b>\$44,100.00</b>
400 <u>Purchased Property Services</u>				
440 Rentals				350.00
<b>Total Purchased Property Services</b>				<b>\$350.00</b>
500 <u>Other Purchased Services</u>				
520 Insurance – General				104,111.00
<b>Total Other Purchased Services</b>				<b>\$104,111.00</b>
600 <u>Supplies</u>				
610 General Supplies				1,170.49
630 Food				515.82
650 Supplies & Fees – Technology Related				21,000.00
<b>Total Supplies</b>				<b>\$22,686.31</b>
800 <u>Other Objects</u>				
810 Dues and Fees				15,840.42
<b>Total Other Objects</b>				<b>\$15,840.42</b>
<b>Total 2310 Board Services</b>				<b>\$187,087.73</b>



LEA : 125234502     Haverford Township SD

Printed 1/4/2022 9:16:46 AM

General Fund (10)

2330 Tax Assessment and Collection Services	<u>Elementary</u>	<u>Secondary</u>	<u>Federal</u>	<u>Total</u>
100 <u>Personnel Services – Salaries</u>				
100 Personnel Services – Salaries				38,421.82
Total Personnel Services – Salaries				\$38,421.82
200 <u>Personnel Services – Employee Benefits</u>				
210 Group Insurance – Contracted Provider				17,101.61
220 Social Security Contributions				2,754.56
230 PSERS Retirement Contributions				13,249.28
Total Personnel Services – Employee Benefits				\$33,105.45
300 <u>Purchased Professional and Technical Services</u>				
340 Technical Services				129.01
Total Purchased Professional and Technical Services				\$129.01
500 <u>Other Purchased Services</u>				
530 Communications				8,227.01
Total Other Purchased Services				\$8,227.01
600 <u>Supplies</u>				
610 General Supplies				3,206.52
Total Supplies				\$3,206.52
Total 2330 Tax Assessment and Collection Services				\$83,089.81

LEA : 125234502     Haverford Township SD

Printed 1/4/2022 9:16:46 AM

General Fund (10)

2350 Legal and Accounting Services	<u>Elementary</u>	<u>Secondary</u>	<u>Federal</u>	<u>Total</u>
300 <u>Purchased Professional and Technical Services</u>				
330 Other Professional Services				379,463.17
Total Purchased Professional and Technical Services				\$379,463.17
Total 2350 Legal and Accounting Services				\$379,463.17

LEA : 125234502     Haverford Township SD

Printed 1/4/2022 9:16:46 AM

<b>General Fund (10)</b>				
<b>2360 Office of the Superintendent / Executive Director Services</b>	<b><u>Elementary</u></b>	<b><u>Secondary</u></b>	<b><u>Federal</u></b>	<b><u>Total</u></b>
<b>100 <u>Personnel Services – Salaries</u></b>				
100 Personnel Services – Salaries				320,030.50
<b>Total Personnel Services – Salaries</b>				<b>\$320,030.50</b>
<b>200 <u>Personnel Services – Employee Benefits</u></b>				
210 Group Insurance – Contracted Provider				47,220.98
220 Social Security Contributions				17,759.98
230 PSERS Retirement Contributions				104,815.16
291 Other Retirement Plans				3,918.04
<b>Total Personnel Services – Employee Benefits</b>				<b>\$173,714.16</b>
<b>300 <u>Purchased Professional and Technical Services</u></b>				
330 Other Professional Services				10,670.00
<b>Total Purchased Professional and Technical Services</b>				<b>\$10,670.00</b>
<b>500 <u>Other Purchased Services</u></b>				
580 Travel				262.50
<b>Total Other Purchased Services</b>				<b>\$262.50</b>
<b>600 <u>Supplies</u></b>				
610 General Supplies				2,126.61
630 Food				1,188.12
640 Books and Periodicals				341.10
<b>Total Supplies</b>				<b>\$3,655.83</b>
<b>700 <u>Property</u></b>				
752 Capital Equipment – Original and Additional				540.00
<b>Total Property</b>				<b>\$540.00</b>
<b>800 <u>Other Objects</u></b>				
810 Dues and Fees				9,159.00
<b>Total Other Objects</b>				<b>\$9,159.00</b>
<b>Total 2360 Office of the Superintendent / Executive Director Services</b>				<b>\$518,031.99</b>

LEA : 125234502     Haverford Township SD

Printed 1/4/2022 9:16:46 AM

General Fund (10)

2370 Community Relations Services				<u>Elementary</u>	<u>Secondary</u>	<u>Federal</u>	<u>Total</u>
100 <u>Personnel Services – Salaries</u>							
100 Personnel Services – Salaries							115,007.98
Total Personnel Services – Salaries							\$115,007.98
200 <u>Personnel Services – Employee Benefits</u>							
210 Group Insurance – Contracted Provider							52,534.22
220 Social Security Contributions							8,065.07
230 PSERS Retirement Contributions							39,170.13
Total Personnel Services – Employee Benefits							\$99,769.42
Total 2370 Community Relations Services							\$214,777.40

LEA : 125234502     Haverford Township SD

Printed 1/4/2022 9:16:46 AM

General Fund (10)

2380 Office of the Principal Services	Elementary	Secondary	Federal	Total
<b>100 Personnel Services – Salaries</b>				
100 Personnel Services – Salaries	1,347,265.34	1,210,672.46		2,557,937.80
<b>Total Personnel Services – Salaries</b>	<b>\$1,347,265.34</b>	<b>\$1,210,672.46</b>		<b>\$2,557,937.80</b>
<b>200 Personnel Services – Employee Benefits</b>				
210 Group Insurance – Contracted Provider	255,810.84	220,408.22		476,219.06
220 Social Security Contributions	99,734.56	89,485.99		189,220.55
230 PSERS Retirement Contributions	462,835.51	415,823.30		878,658.81
291 Other Retirement Plans	3,360.16	8,120.00		11,480.16
<b>Total Personnel Services – Employee Benefits</b>	<b>\$821,741.07</b>	<b>\$733,837.51</b>		<b>\$1,555,578.58</b>
<b>300 Purchased Professional and Technical Services</b>				
330 Other Professional Services	1,693.50			1,693.50
340 Technical Services		16,407.72		16,407.72
<b>Total Purchased Professional and Technical Services</b>	<b>\$1,693.50</b>	<b>\$16,407.72</b>		<b>\$18,101.22</b>
<b>400 Purchased Property Services</b>				
440 Rentals		14,675.47		14,675.47
<b>Total Purchased Property Services</b>		<b>\$14,675.47</b>		<b>\$14,675.47</b>
<b>500 Other Purchased Services</b>				
550 Printing and Binding		14,548.88		14,548.88
580 Travel	595.00	150.00		745.00
<b>Total Other Purchased Services</b>	<b>\$595.00</b>	<b>\$14,698.88</b>		<b>\$15,293.88</b>
<b>600 Supplies</b>				
610 General Supplies	130.60	15,686.83		15,817.43
630 Food		5,161.06		5,161.06
640 Books and Periodicals	177.07	1,044.14		1,221.21
<b>Total Supplies</b>	<b>\$307.67</b>	<b>\$21,892.03</b>		<b>\$22,199.70</b>
<b>700 Property</b>				
752 Capital Equipment – Original and Additional	149.50	3,243.79		3,393.29
762 Capitalized Equipment - Replacement		19,789.56		19,789.56
<b>Total Property</b>	<b>\$149.50</b>	<b>\$23,033.35</b>		<b>\$23,182.85</b>
<b>800 Other Objects</b>				
810 Dues and Fees	3,949.17	4,898.61		8,847.78
<b>Total Other Objects</b>	<b>\$3,949.17</b>	<b>\$4,898.61</b>		<b>\$8,847.78</b>
<b>Total 2380 Office of the Principal Services</b>	<b>\$2,175,701.25</b>	<b>\$2,040,116.03</b>		<b>\$4,215,817.28</b>

LEA : 125234502     Haverford Township SD

Printed 1/4/2022 9:16:46 AM

General Fund (10)				
2390 Other Administration Services	<u>Elementary</u>	<u>Secondary</u>	<u>Federal</u>	<u>Total</u>
800 <u>Other Objects</u>				
810 Dues and Fees				192,413.75
Total Other Objects				\$192,413.75
Total 2390 Other Administration Services				\$192,413.75

LEA : 125234502     Haverford Township SD

Printed 1/4/2022 9:16:46 AM

General Fund (10)

2400 Support Services – Pupil Health	<u>Elementary</u>	<u>Secondary</u>	<u>Federal</u>	<u>Total</u>
100 <u>Personnel Services – Salaries</u>				
100 Personnel Services – Salaries				1,158,772.96
Total Personnel Services – Salaries				\$1,158,772.96
200 <u>Personnel Services – Employee Benefits</u>				
210 Group Insurance – Contracted Provider				281,271.58
220 Social Security Contributions				89,136.65
230 PSERS Retirement Contributions				397,666.49
Total Personnel Services – Employee Benefits				\$768,074.72
300 <u>Purchased Professional and Technical Services</u>				
330 Other Professional Services				366,435.80
Total Purchased Professional and Technical Services				\$366,435.80
500 <u>Other Purchased Services</u>				
580 Travel				115.18
Total Other Purchased Services				\$115.18
600 <u>Supplies</u>				
610 General Supplies				4,453.33
Total Supplies				\$4,453.33
Total 2400 Support Services – Pupil Health				\$2,297,851.99

LEA : 125234502     Haverford Township SD

Printed 1/4/2022 9:16:46 AM

General Fund (10)

2420 Medical Services

Elementary                      Secondary                      Federal                      Total

100 <u>Personnel Services – Salaries</u>				
100 Personnel Services – Salaries				264,984.66
<b>Total Personnel Services – Salaries</b>				<b>\$264,984.66</b>
200 <u>Personnel Services – Employee Benefits</u>				
210 Group Insurance – Contracted Provider				46,661.71
220 Social Security Contributions				20,831.33
230 PSERS Retirement Contributions				91,733.57
<b>Total Personnel Services – Employee Benefits</b>				<b>\$159,226.61</b>
300 <u>Purchased Professional and Technical Services</u>				
330 Other Professional Services				366,435.80
<b>Total Purchased Professional and Technical Services</b>				<b>\$366,435.80</b>
<b>Total 2420 Medical Services</b>				<b>\$790,647.07</b>



LEA : 125234502     Haverford Township SD

Printed 1/4/2022 9:16:46 AM

General Fund (10)

2440 Nursing Services

	<u>Elementary</u>	<u>Secondary</u>	<u>Federal</u>	<u>Total</u>
<b>100 <u>Personnel Services – Salaries</u></b>				
100 Personnel Services – Salaries				803,156.35
<b>Total Personnel Services – Salaries</b>				<b>\$803,156.35</b>
<b>200 <u>Personnel Services – Employee Benefits</u></b>				
210 Group Insurance – Contracted Provider				218,462.79
220 Social Security Contributions				61,534.90
230 PSERS Retirement Contributions				274,671.98
<b>Total Personnel Services – Employee Benefits</b>				<b>\$554,669.67</b>
<b>500 <u>Other Purchased Services</u></b>				
580 Travel				115.18
<b>Total Other Purchased Services</b>				<b>\$115.18</b>
<b>600 <u>Supplies</u></b>				
610 General Supplies				4,453.33
<b>Total Supplies</b>				<b>\$4,453.33</b>
<b>Total 2440 Nursing Services</b>				<b>\$1,362,394.53</b>

LEA : 125234502     Haverford Township SD

Printed 1/4/2022 9:16:46 AM

General Fund (10)

2450 Nonpublic Health Services	<u>Elementary</u>	<u>Secondary</u>	<u>Federal</u>	<u>Total</u>
100 <u>Personnel Services – Salaries</u>				
100 Personnel Services – Salaries				90,631.95
Total Personnel Services – Salaries				\$90,631.95
200 <u>Personnel Services – Employee Benefits</u>				
210 Group Insurance – Contracted Provider				16,147.08
220 Social Security Contributions				6,770.42
230 PSERS Retirement Contributions				31,260.94
Total Personnel Services – Employee Benefits				\$54,178.44
Total 2450 Nonpublic Health Services				\$144,810.39

LEA : 125234502     Haverford Township SD

Printed 1/4/2022 9:16:46 AM

General Fund (10)

2500 Support Services – Business	Elementary	Secondary	Federal	Total
100 <u>Personnel Services – Salaries</u>				
100 Personnel Services – Salaries				746,090.43
Total Personnel Services – Salaries				\$746,090.43
200 <u>Personnel Services – Employee Benefits</u>				
210 Group Insurance – Contracted Provider				222,665.13
220 Social Security Contributions				52,688.09
230 PSERS Retirement Contributions				248,995.76
291 Other Retirement Plans				4,391.60
Total Personnel Services – Employee Benefits				\$528,740.58
300 <u>Purchased Professional and Technical Services</u>				
323 Professional Educational Services – Other Educational Agencies				640.00
330 Other Professional Services				15,250.00
340 Technical Services				1,440.00
Total Purchased Professional and Technical Services				\$17,330.00
400 <u>Purchased Property Services</u>				
430 Repairs and Maintenance Services				13,000.00
Total Purchased Property Services				\$13,000.00
500 <u>Other Purchased Services</u>				
530 Communications				7,080.24
580 Travel				39.20
Total Other Purchased Services				\$7,119.44
600 <u>Supplies</u>				
610 General Supplies				25,909.11
650 Supplies & Fees – Technology Related				43,232.33
Total Supplies				\$69,141.44
700 <u>Property</u>				
762 Capitalized Equipment - Replacement				19,650.44
Total Property				\$19,650.44
800 <u>Other Objects</u>				
810 Dues and Fees				10,349.58
Total Other Objects				\$10,349.58
Total 2500 Support Services – Business				\$1,411,421.91

LEA : 125234502     Haverford Township SD

Printed 1/4/2022 9:16:46 AM

General Fund (10)

2510 Fiscal Services	Elementary	Secondary	Federal	Total
<b>100 <u>Personnel Services – Salaries</u></b>				
100 Personnel Services – Salaries				561,927.46
<b>Total Personnel Services – Salaries</b>				<b>\$561,927.46</b>
<b>200 <u>Personnel Services – Employee Benefits</u></b>				
210 Group Insurance – Contracted Provider				158,033.84
220 Social Security Contributions				39,556.79
230 PSERS Retirement Contributions				186,389.99
291 Other Retirement Plans				3,829.34
<b>Total Personnel Services – Employee Benefits</b>				<b>\$387,809.96</b>
<b>300 <u>Purchased Professional and Technical Services</u></b>				
323 Professional Educational Services – Other Educational Agencies				640.00
330 Other Professional Services				15,250.00
340 Technical Services				1,440.00
<b>Total Purchased Professional and Technical Services</b>				<b>\$17,330.00</b>
<b>400 <u>Purchased Property Services</u></b>				
430 Repairs and Maintenance Services				13,000.00
<b>Total Purchased Property Services</b>				<b>\$13,000.00</b>
<b>500 <u>Other Purchased Services</u></b>				
530 Communications				7,080.24
580 Travel				39.20
<b>Total Other Purchased Services</b>				<b>\$7,119.44</b>
<b>600 <u>Supplies</u></b>				
610 General Supplies				25,909.11
650 Supplies & Fees – Technology Related				43,232.33
<b>Total Supplies</b>				<b>\$69,141.44</b>
<b>700 <u>Property</u></b>				
762 Capitalized Equipment - Replacement				19,650.44
<b>Total Property</b>				<b>\$19,650.44</b>
<b>800 <u>Other Objects</u></b>				
810 Dues and Fees				10,349.58
<b>Total Other Objects</b>				<b>\$10,349.58</b>
<b>Total 2510 Fiscal Services</b>				<b>\$1,086,328.32</b>

LEA : 125234502     Haverford Township SD

Printed 1/4/2022 9:16:46 AM

<b>General Fund (10)</b>				
<b>2511 Supervision of Fiscal Services - Head of Component</b>	<b><u>Elementary</u></b>	<b><u>Secondary</u></b>	<b><u>Federal</u></b>	<b><u>Total</u></b>
<b>100 <u>Personnel Services – Salaries</u></b>				
100 Personnel Services – Salaries				561,927.46
<b>Total Personnel Services – Salaries</b>				<b>\$561,927.46</b>
<b>200 <u>Personnel Services – Employee Benefits</u></b>				
210 Group Insurance – Contracted Provider				158,033.84
220 Social Security Contributions				39,556.79
230 PSERS Retirement Contributions				186,389.99
291 Other Retirement Plans				3,829.34
<b>Total Personnel Services – Employee Benefits</b>				<b>\$387,809.96</b>
<b>300 <u>Purchased Professional and Technical Services</u></b>				
323 Professional Educational Services – Other Educational Agencies				640.00
330 Other Professional Services				15,250.00
340 Technical Services				1,440.00
<b>Total Purchased Professional and Technical Services</b>				<b>\$17,330.00</b>
<b>400 <u>Purchased Property Services</u></b>				
430 Repairs and Maintenance Services				13,000.00
<b>Total Purchased Property Services</b>				<b>\$13,000.00</b>
<b>500 <u>Other Purchased Services</u></b>				
530 Communications				7,080.24
580 Travel				39.20
<b>Total Other Purchased Services</b>				<b>\$7,119.44</b>
<b>600 <u>Supplies</u></b>				
610 General Supplies				25,909.11
650 Supplies & Fees – Technology Related				43,232.33
<b>Total Supplies</b>				<b>\$69,141.44</b>
<b>700 <u>Property</u></b>				
762 Capitalized Equipment - Replacement				19,650.44
<b>Total Property</b>				<b>\$19,650.44</b>
<b>800 <u>Other Objects</u></b>				
810 Dues and Fees				10,349.58
<b>Total Other Objects</b>				<b>\$10,349.58</b>
<b>Total 2511 Supervision of Fiscal Services - Head of Component</b>				<b>\$1,086,328.32</b>

LEA : 125234502     Haverford Township SD

Printed 1/4/2022 9:16:46 AM

General Fund (10)

2520 Purchasing Services	<u>Elementary</u>	<u>Secondary</u>	<u>Federal</u>	<u>Total</u>
100 <u>Personnel Services – Salaries</u>				
100 Personnel Services – Salaries				75,571.06
Total Personnel Services – Salaries				\$75,571.06
200 <u>Personnel Services – Employee Benefits</u>				
210 Group Insurance – Contracted Provider				23,536.07
220 Social Security Contributions				5,318.27
230 PSERS Retirement Contributions				26,060.86
291 Other Retirement Plans				562.26
Total Personnel Services – Employee Benefits				\$55,477.46
Total 2520 Purchasing Services				\$131,048.52

LEA : 125234502     Haverford Township SD

Printed 1/4/2022 9:16:46 AM

General Fund (10)

2530 Warehousing and Distributing Services	<u>Elementary</u>	<u>Secondary</u>	<u>Federal</u>	<u>Total</u>
100 <u>Personnel Services – Salaries</u>				
100 Personnel Services – Salaries				59,160.88
Total Personnel Services – Salaries				\$59,160.88
200 <u>Personnel Services – Employee Benefits</u>				
210 Group Insurance – Contracted Provider				25,392.42
220 Social Security Contributions				4,200.81
230 PSERS Retirement Contributions				19,488.92
Total Personnel Services – Employee Benefits				\$49,082.15
Total 2530 Warehousing and Distributing Services				\$108,243.03

LEA : 125234502     Haverford Township SD

Printed 1/4/2022 9:16:46 AM

General Fund (10)

2540 Printing, Publishing and Duplicating Services	<u>Elementary</u>	<u>Secondary</u>	<u>Federal</u>	<u>Total</u>
100 <u>Personnel Services – Salaries</u>				
100 Personnel Services – Salaries				49,431.03
Total Personnel Services – Salaries				\$49,431.03
200 <u>Personnel Services – Employee Benefits</u>				
210 Group Insurance – Contracted Provider				15,702.80
220 Social Security Contributions				3,612.22
230 PSERS Retirement Contributions				17,055.99
Total Personnel Services – Employee Benefits				\$36,371.01
Total 2540 Printing, Publishing and Duplicating Services				\$85,802.04



LEA : 125234502     Haverford Township SD

Printed 1/4/2022 9:16:46 AM

General Fund (10)

2600 Operation and Maintenance of Plant Services	<u>Elementary</u>	<u>Secondary</u>	<u>Federal</u>	<u>Total</u>
<b>100 <u>Personnel Services – Salaries</u></b>				
100 Personnel Services – Salaries				3,170,668.11
<b>Total Personnel Services – Salaries</b>				<b>\$3,170,668.11</b>
<b>200 <u>Personnel Services – Employee Benefits</u></b>				
210 Group Insurance – Contracted Provider				813,079.82
220 Social Security Contributions				235,692.94
230 PSERS Retirement Contributions				1,085,240.58
250 Unemployment Compensation				44,657.90
291 Other Retirement Plans				9,700.00
<b>Total Personnel Services – Employee Benefits</b>				<b>\$2,188,371.24</b>
<b>300 <u>Purchased Professional and Technical Services</u></b>				
323 Professional Educational Services – Other Educational Agencies				510.00
330 Other Professional Services				7,721.50
<b>Total Purchased Professional and Technical Services</b>				<b>\$8,231.50</b>
<b>400 <u>Purchased Property Services</u></b>				
410 Cleaning Services				55,133.39
420 Utility Services				768,808.84
430 Repairs and Maintenance Services				507,824.38
440 Rentals				30,069.84
<b>Total Purchased Property Services</b>				<b>\$1,361,836.45</b>
<b>500 <u>Other Purchased Services</u></b>				
523 General Property and Liability Insurance				269,465.61
530 Communications				125,089.36
580 Travel				1,050.00
<b>Total Other Purchased Services</b>				<b>\$395,604.97</b>
<b>600 <u>Supplies</u></b>				
610 General Supplies	265,303.56	229,436.00		494,739.56
620 Energy				229,503.10
<b>Total Supplies</b>	<b>\$265,303.56</b>	<b>\$229,436.00</b>		<b>\$724,242.66</b>
<b>700 <u>Property</u></b>				
752 Capital Equipment – Original and Additional				22,571.51
<b>Total Property</b>				<b>\$22,571.51</b>
<b>800 <u>Other Objects</u></b>				
810 Dues and Fees				2,099.25
<b>Total Other Objects</b>				<b>\$2,099.25</b>
<b>Total 2600 Operation and Maintenance of Plant Services</b>	<b>\$265,303.56</b>	<b>\$229,436.00</b>		<b>\$7,873,625.69</b>

LEA : 125234502     Haverford Township SD

Printed 1/4/2022 9:16:46 AM

General Fund (10)

2610 Supervision of Operation and Maintenance of Plant Services	<u>Elementary</u>	<u>Secondary</u>	<u>Federal</u>	<u>Total</u>
100 <u>Personnel Services – Salaries</u>				
100 Personnel Services – Salaries				183,720.92
Total Personnel Services – Salaries				\$183,720.92
200 <u>Personnel Services – Employee Benefits</u>				
210 Group Insurance – Contracted Provider				59,244.85
220 Social Security Contributions				13,456.57
230 PSERS Retirement Contributions				63,708.56
Total Personnel Services – Employee Benefits				\$136,409.98
300 <u>Purchased Professional and Technical Services</u>				
323 Professional Educational Services – Other Educational Agencies				510.00
Total Purchased Professional and Technical Services				\$510.00
500 <u>Other Purchased Services</u>				
580 Travel				1,050.00
Total Other Purchased Services				\$1,050.00
600 <u>Supplies</u>				
610 General Supplies	8,026.44	6,567.08		14,593.52
Total Supplies	\$8,026.44	\$6,567.08		\$14,593.52
800 <u>Other Objects</u>				
810 Dues and Fees				447.18
Total Other Objects				\$447.18
Total 2610 Supervision of Operation and Maintenance of Plant Services	\$8,026.44	\$6,567.08		\$336,731.60

LEA : 125234502     Haverford Township SD

Printed 1/4/2022 9:16:46 AM

<b>General Fund (10)</b>				
<b>2611 Supervision of Operation and Maintenance of Plant Services – Head of Component</b>	<b><u>Elementary</u></b>	<b><u>Secondary</u></b>	<b><u>Federal</u></b>	<b><u>Total</u></b>
<b>100 <u>Personnel Services – Salaries</u></b>				
100 Personnel Services – Salaries				183,720.92
<b>Total Personnel Services – Salaries</b>				<b>\$183,720.92</b>
<b>200 <u>Personnel Services – Employee Benefits</u></b>				
210 Group Insurance – Contracted Provider				59,244.85
220 Social Security Contributions				13,456.57
230 PSERS Retirement Contributions				63,708.56
<b>Total Personnel Services – Employee Benefits</b>				<b>\$136,409.98</b>
<b>300 <u>Purchased Professional and Technical Services</u></b>				
323 Professional Educational Services – Other Educational Agencies				510.00
<b>Total Purchased Professional and Technical Services</b>				<b>\$510.00</b>
<b>500 <u>Other Purchased Services</u></b>				
580 Travel				1,050.00
<b>Total Other Purchased Services</b>				<b>\$1,050.00</b>
<b>600 <u>Supplies</u></b>				
610 General Supplies	8,026.44	6,567.08		14,593.52
<b>Total Supplies</b>	<b>\$8,026.44</b>	<b>\$6,567.08</b>		<b>\$14,593.52</b>
<b>800 <u>Other Objects</u></b>				
810 Dues and Fees				447.18
<b>Total Other Objects</b>				<b>\$447.18</b>
<b>Total 2611 Supervision of Operation and Maintenance of Plant Services – Head of Component</b>	<b>\$8,026.44</b>	<b>\$6,567.08</b>		<b>\$336,731.60</b>

LEA : 125234502     Haverford Township SD

Printed 1/4/2022 9:16:46 AM

General Fund (10)

2620 Operation of Buildings Services	Elementary	Secondary	Federal	Total
100 <u>Personnel Services – Salaries</u>				
100 Personnel Services – Salaries				2,585,382.59
Total Personnel Services – Salaries				\$2,585,382.59
200 <u>Personnel Services – Employee Benefits</u>				
210 Group Insurance – Contracted Provider				636,299.85
220 Social Security Contributions				192,738.64
230 PSERS Retirement Contributions				885,683.76
250 Unemployment Compensation				44,657.90
291 Other Retirement Plans				9,700.00
Total Personnel Services – Employee Benefits				\$1,769,080.15
300 <u>Purchased Professional and Technical Services</u>				
330 Other Professional Services				7,721.50
Total Purchased Professional and Technical Services				\$7,721.50
400 <u>Purchased Property Services</u>				
410 Cleaning Services				55,133.39
420 Utility Services				768,808.84
430 Repairs and Maintenance Services				472,924.04
440 Rentals				25,827.94
Total Purchased Property Services				\$1,322,694.21
500 <u>Other Purchased Services</u>				
523 General Property and Liability Insurance				269,465.61
530 Communications				125,089.36
Total Other Purchased Services				\$394,554.97
600 <u>Supplies</u>				
610 General Supplies	220,879.68	193,089.20		413,968.88
620 Energy				229,065.10
Total Supplies	\$220,879.68	\$193,089.20		\$643,033.98
700 <u>Property</u>				
752 Capital Equipment – Original and Additional				22,571.51
Total Property				\$22,571.51
800 <u>Other Objects</u>				
810 Dues and Fees				1,652.07
Total Other Objects				\$1,652.07
Total 2620 Operation of Buildings Services	\$220,879.68	\$193,089.20		\$6,746,690.98

LEA : 125234502     Haverford Township SD

Printed 1/4/2022 9:16:46 AM

General Fund (10)

2630 Care and Upkeep of Grounds Services	<u>Elementary</u>	<u>Secondary</u>	<u>Federal</u>	<u>Total</u>
100 <u>Personnel Services – Salaries</u>				
100 Personnel Services – Salaries				353,790.85
Total Personnel Services – Salaries				\$353,790.85
200 <u>Personnel Services – Employee Benefits</u>				
210 Group Insurance – Contracted Provider				115,538.03
220 Social Security Contributions				25,870.66
230 PSERS Retirement Contributions				119,408.24
Total Personnel Services – Employee Benefits				\$260,816.93
400 <u>Purchased Property Services</u>				
430 Repairs and Maintenance Services				6,110.16
440 Rentals				4,241.90
Total Purchased Property Services				\$10,352.06
600 <u>Supplies</u>				
610 General Supplies	32,179.36	26,328.57		58,507.93
Total Supplies	\$32,179.36	\$26,328.57		\$58,507.93
Total 2630 Care and Upkeep of Grounds Services	\$32,179.36	\$26,328.57		\$683,467.77

LEA : 125234502     Haverford Township SD

Printed 1/4/2022 9:16:46 AM

General Fund (10)

2650 Vehicle Operation and Maintenance Services (Other Than Student Transportation Vehicles)	<u>Elementary</u>	<u>Secondary</u>	<u>Federal</u>	<u>Total</u>
400 <u>Purchased Property Services</u>				
430 Repairs and Maintenance Services				28,790.18
Total Purchased Property Services				\$28,790.18
600 <u>Supplies</u>				
610 General Supplies	4,167.42	3,409.71		7,577.13
620 Energy				438.00
Total Supplies	\$4,167.42	\$3,409.71		\$8,015.13
Total 2650 Vehicle Operation and Maintenance Services (Other Than Student Transportation Vehicles)	\$4,167.42	\$3,409.71		\$36,805.31

LEA : 125234502     Haverford Township SD

Printed 1/4/2022 9:16:46 AM

General Fund (10)

2660 Safety and Security Services	<u>Elementary</u>	<u>Secondary</u>	<u>Federal</u>	<u>Total</u>
100 <u>Personnel Services – Salaries</u>				
100 Personnel Services – Salaries				47,773.75
Total Personnel Services – Salaries				\$47,773.75
200 <u>Personnel Services – Employee Benefits</u>				
210 Group Insurance – Contracted Provider				1,997.09
220 Social Security Contributions				3,627.07
230 PSERS Retirement Contributions				16,440.02
Total Personnel Services – Employee Benefits				\$22,064.18
600 <u>Supplies</u>				
610 General Supplies	50.66	41.44		92.10
Total Supplies	\$50.66	\$41.44		\$92.10
Total 2660 Safety and Security Services	\$50.66	\$41.44		\$69,930.03

LEA : 125234502     Haverford Township SD

Printed 1/4/2022 9:16:46 AM

General Fund (10)

2700 Student Transportation Services	<u>Elementary</u>	<u>Secondary</u>	<u>Federal</u>	<u>Total</u>
100 <u>Personnel Services – Salaries</u>				
100 Personnel Services – Salaries				2,483,028.74
Total Personnel Services – Salaries				\$2,483,028.74
200 <u>Personnel Services – Employee Benefits</u>				
210 Group Insurance – Contracted Provider				351,891.28
220 Social Security Contributions				193,862.27
230 PSERS Retirement Contributions				836,301.74
250 Unemployment Compensation				60,766.54
291 Other Retirement Plans				60,722.40
Total Personnel Services – Employee Benefits				\$1,503,544.23
300 <u>Purchased Professional and Technical Services</u>				
323 Professional Educational Services – Other Educational Agencies				200.00
330 Other Professional Services				8,656.00
Total Purchased Professional and Technical Services				\$8,856.00
400 <u>Purchased Property Services</u>				
430 Repairs and Maintenance Services				62,719.01
440 Rentals				414,873.48
Total Purchased Property Services				\$477,592.49
500 <u>Other Purchased Services</u>				
513 Contracted Carriers				12,795.00
516 Student Transportation Services From the IU				2,963.10
519 Student Transportation Services From Other Sources				1,213.00
522 Automotive Liability Insurance				69,719.00
530 Communications				1,095.00
580 Travel				2,102.87
Total Other Purchased Services				\$89,887.97
600 <u>Supplies</u>				
610 General Supplies				120,712.22
620 Energy				118,020.88
640 Books and Periodicals				1,551.74
650 Supplies & Fees – Technology Related				47,687.24
Total Supplies				\$287,972.08
700 <u>Property</u>				
752 Capital Equipment – Original and Additional				2,500.00
758 Capitalized Technology Software - Original				1,600.00
762 Capitalized Equipment - Replacement				77,582.76
Total Property				\$81,682.76
800 <u>Other Objects</u>				
810 Dues and Fees				337.53
Total Other Objects				\$337.53
Total 2700 Student Transportation Services				\$4,932,901.80



LEA : 125234502     Haverford Township SD

Printed 1/4/2022 9:16:46 AM

General Fund (10)				
2710 Supervision of Student Transportation Services	<u>Elementary</u>	<u>Secondary</u>	<u>Federal</u>	<u>Total</u>
100 <u>Personnel Services – Salaries</u>				
100 Personnel Services – Salaries				274,839.77
Total Personnel Services – Salaries				\$274,839.77
200 <u>Personnel Services – Employee Benefits</u>				
210 Group Insurance – Contracted Provider				113,986.56
220 Social Security Contributions				27,095.41
230 PSERS Retirement Contributions				93,574.55
291 Other Retirement Plans				58,000.00
Total Personnel Services – Employee Benefits				\$292,656.52
300 <u>Purchased Professional and Technical Services</u>				
323 Professional Educational Services – Other Educational Agencies				200.00
330 Other Professional Services				8,656.00
Total Purchased Professional and Technical Services				\$8,856.00
400 <u>Purchased Property Services</u>				
440 Rentals				58,124.63
Total Purchased Property Services				\$58,124.63
500 <u>Other Purchased Services</u>				
513 Contracted Carriers				10,590.00
516 Student Transportation Services From the IU				2,963.10
519 Student Transportation Services From Other Sources				1,213.00
522 Automotive Liability Insurance				69,719.00
530 Communications				1,095.00
580 Travel				2,102.87
Total Other Purchased Services				\$87,682.97
600 <u>Supplies</u>				
640 Books and Periodicals				1,551.74
650 Supplies & Fees – Technology Related				47,687.24
Total Supplies				\$49,238.98
700 <u>Property</u>				
758 Capitalized Technology Software - Original				1,600.00
762 Capitalized Equipment - Replacement				2,355.74
Total Property				\$3,955.74
800 <u>Other Objects</u>				
810 Dues and Fees				337.53
Total Other Objects				\$337.53
Total 2710 Supervision of Student Transportation Services				\$775,692.14

LEA : 125234502     Haverford Township SD

Printed 1/4/2022 9:16:46 AM

<b>General Fund (10)</b>				
<b>2711 Supervision of Student Transportation Services – Head of Component</b>	<b><u>Elementary</u></b>	<b><u>Secondary</u></b>	<b><u>Federal</u></b>	<b><u>Total</u></b>
<b>100 <u>Personnel Services – Salaries</u></b>				
100 Personnel Services – Salaries				274,839.77
<b>Total Personnel Services – Salaries</b>				<b>\$274,839.77</b>
<b>200 <u>Personnel Services – Employee Benefits</u></b>				
210 Group Insurance – Contracted Provider				113,986.56
220 Social Security Contributions				27,095.41
230 PSERS Retirement Contributions				93,574.55
291 Other Retirement Plans				58,000.00
<b>Total Personnel Services – Employee Benefits</b>				<b>\$292,656.52</b>
<b>300 <u>Purchased Professional and Technical Services</u></b>				
323 Professional Educational Services – Other Educational Agencies				200.00
330 Other Professional Services				8,656.00
<b>Total Purchased Professional and Technical Services</b>				<b>\$8,856.00</b>
<b>400 <u>Purchased Property Services</u></b>				
440 Rentals				58,124.63
<b>Total Purchased Property Services</b>				<b>\$58,124.63</b>
<b>500 <u>Other Purchased Services</u></b>				
513 Contracted Carriers				10,590.00
516 Student Transportation Services From the IU				2,963.10
519 Student Transportation Services From Other Sources				1,213.00
522 Automotive Liability Insurance				69,719.00
530 Communications				1,095.00
580 Travel				2,102.87
<b>Total Other Purchased Services</b>				<b>\$87,682.97</b>
<b>600 <u>Supplies</u></b>				
640 Books and Periodicals				1,551.74
650 Supplies & Fees – Technology Related				47,687.24
<b>Total Supplies</b>				<b>\$49,238.98</b>
<b>700 <u>Property</u></b>				
758 Capitalized Technology Software - Original				1,600.00
762 Capitalized Equipment - Replacement				2,355.74
<b>Total Property</b>				<b>\$3,955.74</b>
<b>800 <u>Other Objects</u></b>				
810 Dues and Fees				337.53
<b>Total Other Objects</b>				<b>\$337.53</b>
<b>Total 2711 Supervision of Student Transportation Services – Head of Component</b>				<b>\$775,692.14</b>

LEA : 125234502     Haverford Township SD

Printed 1/4/2022 9:16:46 AM

General Fund (10)

2720 Vehicle Operation Services	<u>Elementary</u>	<u>Secondary</u>	<u>Federal</u>	<u>Total</u>
100 <u>Personnel Services – Salaries</u>				
100 Personnel Services – Salaries				2,020,118.61
Total Personnel Services – Salaries				\$2,020,118.61
200 <u>Personnel Services – Employee Benefits</u>				
210 Group Insurance – Contracted Provider				184,162.26
220 Social Security Contributions				153,277.03
230 PSERS Retirement Contributions				678,444.68
250 Unemployment Compensation				60,766.54
291 Other Retirement Plans				2,722.40
Total Personnel Services – Employee Benefits				\$1,079,372.91
400 <u>Purchased Property Services</u>				
440 Rentals				356,748.85
Total Purchased Property Services				\$356,748.85
600 <u>Supplies</u>				
610 General Supplies				1,868.69
Total Supplies				\$1,868.69
700 <u>Property</u>				
762 Capitalized Equipment - Replacement				75,227.02
Total Property				\$75,227.02
Total 2720 Vehicle Operation Services				\$3,533,336.08

LEA : 125234502     Haverford Township SD

Printed 1/4/2022 9:16:46 AM

General Fund (10)

2740 Vehicle Servicing and Maintenance Services	<u>Elementary</u>	<u>Secondary</u>	<u>Federal</u>	<u>Total</u>
100 <u>Personnel Services – Salaries</u>				
100 Personnel Services – Salaries				188,070.36
Total Personnel Services – Salaries				\$188,070.36
200 <u>Personnel Services – Employee Benefits</u>				
210 Group Insurance – Contracted Provider				53,742.46
220 Social Security Contributions				13,489.83
230 PSERS Retirement Contributions				64,282.51
Total Personnel Services – Employee Benefits				\$131,514.80
400 <u>Purchased Property Services</u>				
430 Repairs and Maintenance Services				62,719.01
Total Purchased Property Services				\$62,719.01
600 <u>Supplies</u>				
610 General Supplies				118,843.53
620 Energy				118,020.88
Total Supplies				\$236,864.41
700 <u>Property</u>				
752 Capital Equipment – Original and Additional				2,500.00
Total Property				\$2,500.00
Total 2740 Vehicle Servicing and Maintenance Services				\$621,668.58

LEA : 125234502     Haverford Township SD

Printed 1/4/2022 9:16:46 AM

General Fund (10)

2750 Nonpublic Transportation	<u>Elementary</u>	<u>Secondary</u>	<u>Federal</u>	<u>Total</u>
500 <u>Other Purchased Services</u>				
513 Contracted Carriers				2,205.00
Total Other Purchased Services				\$2,205.00
Total 2750 Nonpublic Transportation				\$2,205.00

LEA : 125234502     Haverford Township SD

Printed 1/4/2022 9:16:46 AM

General Fund (10)

2800 Support Services – Central	<u>Elementary</u>	<u>Secondary</u>	<u>Federal</u>	<u>Total</u>
100 <u>Personnel Services – Salaries</u>				
100 Personnel Services – Salaries				852,955.95
Total Personnel Services – Salaries				\$852,955.95
200 <u>Personnel Services – Employee Benefits</u>				
210 Group Insurance – Contracted Provider				177,220.95
220 Social Security Contributions				60,891.53
230 PSERS Retirement Contributions				290,327.62
291 Other Retirement Plans				7,520.35
Total Personnel Services – Employee Benefits				\$535,960.45
300 <u>Purchased Professional and Technical Services</u>				
329 Professional Educational Services – Other				72,283.98
330 Other Professional Services				40,779.00
340 Technical Services				72,620.53
Total Purchased Professional and Technical Services				\$185,683.51
400 <u>Purchased Property Services</u>				
430 Repairs and Maintenance Services				464,545.61
440 Rentals				459,424.55
Total Purchased Property Services				\$923,970.16
500 <u>Other Purchased Services</u>				
530 Communications				74,416.32
580 Travel				2,052.53
Total Other Purchased Services				\$76,468.85
600 <u>Supplies</u>				
610 General Supplies				11,180.95
640 Books and Periodicals				6,872.78
Total Supplies				\$18,053.73
700 <u>Property</u>				
752 Capital Equipment – Original and Additional				62,083.19
Total Property				\$62,083.19
800 <u>Other Objects</u>				
810 Dues and Fees				1,175.00
Total Other Objects				\$1,175.00
Total 2800 Support Services – Central				\$2,656,350.84

LEA : 125234502     Haverford Township SD

Printed 1/4/2022 9:16:46 AM

General Fund (10)

2820 Information Services

<u>Elementary</u>	<u>Secondary</u>	<u>Federal</u>	<u>Total</u>
-------------------	------------------	----------------	--------------

500 Other Purchased Services

530 Communications			23,665.56
--------------------	--	--	-----------

<b>Total Other Purchased Services</b>			<b>\$23,665.56</b>
---------------------------------------	--	--	--------------------

<b>Total 2820 Information Services</b>			<b>\$23,665.56</b>
--	--	--	--------------------

LEA : 125234502     Haverford Township SD

Printed 1/4/2022 9:16:46 AM

General Fund (10)

2821 Supervision of Information Services	<u>Elementary</u>	<u>Secondary</u>	<u>Federal</u>	<u>Total</u>
500 <u>Other Purchased Services</u>				
530 Communications				23,665.56
Total Other Purchased Services				\$23,665.56
Total 2821 Supervision of Information Services				\$23,665.56



LEA : 125234502     Haverford Township SD

Printed 1/4/2022 9:16:46 AM

General Fund (10)

2830 Staff Services

	<u>Elementary</u>	<u>Secondary</u>	<u>Federal</u>	<u>Total</u>
<b>100 <u>Personnel Services – Salaries</u></b>				
100 Personnel Services – Salaries				420,366.99
<b>Total Personnel Services – Salaries</b>				<b>\$420,366.99</b>
<b>200 <u>Personnel Services – Employee Benefits</u></b>				
210 Group Insurance – Contracted Provider				100,778.24
220 Social Security Contributions				28,058.79
230 PSERS Retirement Contributions				141,123.50
291 Other Retirement Plans				6,996.86
<b>Total Personnel Services – Employee Benefits</b>				<b>\$276,957.39</b>
<b>300 <u>Purchased Professional and Technical Services</u></b>				
329 Professional Educational Services – Other				72,283.98
330 Other Professional Services				36,779.00
340 Technical Services				2,488.53
<b>Total Purchased Professional and Technical Services</b>				<b>\$111,551.51</b>
<b>500 <u>Other Purchased Services</u></b>				
580 Travel				760.00
<b>Total Other Purchased Services</b>				<b>\$760.00</b>
<b>600 <u>Supplies</u></b>				
610 General Supplies				848.67
<b>Total Supplies</b>				<b>\$848.67</b>
<b>800 <u>Other Objects</u></b>				
810 Dues and Fees				1,175.00
<b>Total Other Objects</b>				<b>\$1,175.00</b>
<b>Total 2830 Staff Services</b>				<b>\$811,659.56</b>

LEA : 125234502     Haverford Township SD

Printed 1/4/2022 9:16:46 AM

General Fund (10)				
2831 Supervision of Staff Services	<u>Elementary</u>	<u>Secondary</u>	<u>Federal</u>	<u>Total</u>
100 <u>Personnel Services – Salaries</u>				
100 Personnel Services – Salaries				420,366.99
Total Personnel Services – Salaries				\$420,366.99
200 <u>Personnel Services – Employee Benefits</u>				
210 Group Insurance – Contracted Provider				100,778.24
220 Social Security Contributions				28,058.79
230 PSERS Retirement Contributions				141,123.50
291 Other Retirement Plans				6,996.86
Total Personnel Services – Employee Benefits				\$276,957.39
300 <u>Purchased Professional and Technical Services</u>				
329 Professional Educational Services – Other				72,283.98
330 Other Professional Services				36,779.00
340 Technical Services				2,488.53
Total Purchased Professional and Technical Services				\$111,551.51
500 <u>Other Purchased Services</u>				
580 Travel				760.00
Total Other Purchased Services				\$760.00
600 <u>Supplies</u>				
610 General Supplies				848.67
Total Supplies				\$848.67
800 <u>Other Objects</u>				
810 Dues and Fees				1,175.00
Total Other Objects				\$1,175.00
Total 2831 Supervision of Staff Services				\$811,659.56

LEA : 125234502     Haverford Township SD

Printed 1/4/2022 9:16:46 AM

General Fund (10)

2840 Data Processing Services	<u>Elementary</u>	<u>Secondary</u>	<u>Federal</u>	<u>Total</u>
100 <u>Personnel Services – Salaries</u>				
100 Personnel Services – Salaries				432,588.96
Total Personnel Services – Salaries				\$432,588.96
200 <u>Personnel Services – Employee Benefits</u>				
210 Group Insurance – Contracted Provider				76,442.71
220 Social Security Contributions				32,832.74
230 PSERS Retirement Contributions				149,204.12
291 Other Retirement Plans				523.49
Total Personnel Services – Employee Benefits				\$259,003.06
500 <u>Other Purchased Services</u>				
580 Travel				1,292.53
Total Other Purchased Services				\$1,292.53
600 <u>Supplies</u>				
610 General Supplies				612.76
Total Supplies				\$612.76
Total 2840 Data Processing Services				\$693,497.31

LEA : 125234502     Haverford Township SD

Printed 1/4/2022 9:16:46 AM

General Fund (10)

2860 Management Services	<u>Elementary</u>	<u>Secondary</u>	<u>Federal</u>	<u>Total</u>
<b>300 <u>Purchased Professional and Technical Services</u></b>				
330 Other Professional Services				4,000.00
340 Technical Services				70,132.00
<b>Total Purchased Professional and Technical Services</b>				<b>\$74,132.00</b>
<b>400 <u>Purchased Property Services</u></b>				
430 Repairs and Maintenance Services				464,545.61
440 Rentals				459,424.55
<b>Total Purchased Property Services</b>				<b>\$923,970.16</b>
<b>500 <u>Other Purchased Services</u></b>				
530 Communications				50,750.76
<b>Total Other Purchased Services</b>				<b>\$50,750.76</b>
<b>600 <u>Supplies</u></b>				
610 General Supplies				9,719.52
640 Books and Periodicals				6,872.78
<b>Total Supplies</b>				<b>\$16,592.30</b>
<b>700 <u>Property</u></b>				
752 Capital Equipment – Original and Additional				62,083.19
<b>Total Property</b>				<b>\$62,083.19</b>
<b>Total 2860 Management Services</b>				<b>\$1,127,528.41</b>

LEA : 125234502     Haverford Township SD

Printed 1/4/2022 9:16:46 AM

General Fund (10)

2900 Other Support Services	<u>Elementary</u>	<u>Secondary</u>	<u>Federal</u>	<u>Total</u>
300 <u>Purchased Professional and Technical Services</u>				
330 Other Professional Services				2,548.00
Total Purchased Professional and Technical Services				\$2,548.00
500 <u>Other Purchased Services</u>				
595 IU Payments By Withholding				110,528.05
Total Other Purchased Services				\$110,528.05
Total 2900 Other Support Services				\$113,076.05

LEA : 125234502     Haverford Township SD

Printed 1/4/2022 9:16:46 AM

General Fund (10)

2910 Support Services Not Listed Elsewhere In the 2000 Series	<u>Elementary</u>	<u>Secondary</u>	<u>Federal</u>	<u>Total</u>
300 <u>Purchased Professional and Technical Services</u>				
330 Other Professional Services				2,548.00
Total Purchased Professional and Technical Services				\$2,548.00
500 <u>Other Purchased Services</u>				
595 IU Payments By Withholding				110,528.05
Total Other Purchased Services				\$110,528.05
Total 2910 Support Services Not Listed Elsewhere In the 2000 Series				\$113,076.05

LEA : 125234502     Haverford Township SD

Printed 1/4/2022 9:16:54 AM

General Fund (10)

3000 Operation of Non-Instructional Services		Total
100	<u>Personnel Services – Salaries</u>	
100	Personnel Services – Salaries	692,666.53
Total Personnel Services – Salaries		\$692,666.53
200	<u>Personnel Services – Employee Benefits</u>	
210	Group Insurance – Contracted Provider	34,882.49
220	Social Security Contributions	52,462.63
230	PSERS Retirement Contributions	199,927.45
250	Unemployment Compensation	7,095.60
291	Other Retirement Plans	39,305.59
Total Personnel Services – Employee Benefits		\$333,673.76
300	<u>Purchased Professional and Technical Services</u>	
330	Other Professional Services	11,033.57
390	Other Purchased Professional and Technical Services	96,478.29
Total Purchased Professional and Technical Services		\$107,511.86
400	<u>Purchased Property Services</u>	
410	Cleaning Services	10,629.08
430	Repairs and Maintenance Services	2,544.99
440	Rentals	15,692.39
Total Purchased Property Services		\$28,866.46
500	<u>Other Purchased Services</u>	
520	Insurance – General	12,174.00
550	Printing and Binding	380.00
580	Travel	3,401.48
591	Services Purchased Locally	136,763.21
Total Other Purchased Services		\$152,718.69
600	<u>Supplies</u>	
610	General Supplies	81,907.85
650	Supplies & Fees – Technology Related	19,880.00
Total Supplies		\$101,787.85
700	<u>Property</u>	
752	Capital Equipment – Original and Additional	11,935.63
762	Capitalized Equipment - Replacement	16,560.39
Total Property		\$28,496.02
800	<u>Other Objects</u>	
810	Dues and Fees	13,447.84
Total Other Objects		\$13,447.84
Total 3000 Operation of Non-Instructional Services		\$1,459,169.01

LEA : 125234502     Haverford Township SD

Printed 1/4/2022 9:16:54 AM

General Fund (10)				
3200 Student Activities	<u>Elementary</u>	<u>Secondary</u>	<u>Federal</u>	<u>Total</u>
100 <u>Personnel Services – Salaries</u>				
100 Personnel Services – Salaries				692,666.53
Total Personnel Services – Salaries				\$692,666.53
200 <u>Personnel Services – Employee Benefits</u>				
210 Group Insurance – Contracted Provider				34,882.49
220 Social Security Contributions				52,462.63
230 PSERS Retirement Contributions				199,927.45
250 Unemployment Compensation				7,095.60
291 Other Retirement Plans				39,305.59
Total Personnel Services – Employee Benefits				\$333,673.76
300 <u>Purchased Professional and Technical Services</u>				
330 Other Professional Services				11,033.57
390 Other Purchased Professional and Technical Services				96,478.29
Total Purchased Professional and Technical Services				\$107,511.86
400 <u>Purchased Property Services</u>				
410 Cleaning Services				10,629.08
430 Repairs and Maintenance Services				2,544.99
440 Rentals				15,692.39
Total Purchased Property Services				\$28,866.46
500 <u>Other Purchased Services</u>				
520 Insurance – General				12,174.00
550 Printing and Binding				380.00
580 Travel				3,401.48
Total Other Purchased Services				\$15,955.48
600 <u>Supplies</u>				
610 General Supplies				81,407.85
650 Supplies & Fees – Technology Related				19,880.00
Total Supplies				\$101,287.85
700 <u>Property</u>				
752 Capital Equipment – Original and Additional				11,935.63
762 Capitalized Equipment - Replacement				16,560.39
Total Property				\$28,496.02
800 <u>Other Objects</u>				
810 Dues and Fees				13,447.84
Total Other Objects				\$13,447.84
Total 3200 Student Activities				\$1,321,905.80



LEA : 125234502     Haverford Township SD

Printed 1/4/2022 9:16:54 AM

General Fund (10)

3300 Community Services	<u>Elementary</u>	<u>Secondary</u>	<u>Federal</u>	<u>Total</u>
500 <u>Other Purchased Services</u>				
591 Services Purchased Locally				136,763.21
Total Other Purchased Services				\$136,763.21
600 <u>Supplies</u>				
610 General Supplies			500.00	500.00
Total Supplies			\$500.00	\$500.00
Total 3300 Community Services			\$500.00	\$137,263.21

LEA : 125234502     Haverford Township SD

Printed 1/4/2022 9:17:05 AM

General Fund (10)	
5000 Other Expenditures and Financing Uses	<u>Total</u>
800 <u>Other Objects</u>	
830 Interest	4,603,202.99
Total Other Objects	\$4,603,202.99
900 <u>Other Uses of Funds</u>	
910 Redemption of Principal	6,305,000.00
939 Other Fund Transfers	870,908.57
Total Other Uses of Funds	\$7,175,908.57
Total 5000 Other Expenditures and Financing Uses	\$11,779,111.56

LEA : 125234502     Haverford Township SD

Printed 1/4/2022 9:17:05 AM

General Fund (10)

5100 Debt Service / Other Expenditures and Financing Uses	<u>Elementary</u>	<u>Secondary</u>	<u>Federal</u>	<u>Total</u>
800 <u>Other Objects</u>				
830 Interest				4,603,202.99
Total Other Objects				\$4,603,202.99
900 <u>Other Uses of Funds</u>				
910 Redemption of Principal				6,305,000.00
Total Other Uses of Funds				\$6,305,000.00
Total 5100 Debt Service / Other Expenditures and Financing Uses				\$10,908,202.99

LEA : 125234502     Haverford Township SD

Printed 1/4/2022 9:17:05 AM

General Fund (10)

5110 Debt Service	<u>Elementary</u>	<u>Secondary</u>	<u>Federal</u>	<u>Total</u>
800 <u>Other Objects</u>				
830 Interest				4,603,202.99
Total Other Objects				\$4,603,202.99
900 <u>Other Uses of Funds</u>				
910 Redemption of Principal				6,305,000.00
Total Other Uses of Funds				\$6,305,000.00
Total 5110 Debt Service				\$10,908,202.99

LEA : 125234502     Haverford Township SD

Printed 1/4/2022 9:17:05 AM

General Fund (10)

5200 Interfund Transfers – Out	<u>Elementary</u>	<u>Secondary</u>	<u>Federal</u>	<u>Total</u>
900 <u>Other Uses of Funds</u>				
939 Other Fund Transfers				870,908.57
Total Other Uses of Funds				\$870,908.57
Total 5200 Interfund Transfers – Out				\$870,908.57

LEA : 125234502     Haverford Township SD

Printed 1/4/2022 9:17:05 AM

General Fund (10)

5230 Capital Projects Fund Transfers	<u>Elementary</u>	<u>Secondary</u>	<u>Federal</u>	<u>Total</u>
900 <u>Other Uses of Funds</u>				
939 Other Fund Transfers				670,908.57
Total Other Uses of Funds				\$670,908.57
Total 5230 Capital Projects Fund Transfers				\$670,908.57

LEA : 125234502     Haverford Township SD

Printed 1/4/2022 9:17:05 AM

General Fund (10)

5250 Enterprise Fund Transfers	<u>Elementary</u>	<u>Secondary</u>	<u>Federal</u>	<u>Total</u>
900 <u>Other Uses of Funds</u>				
939 Other Fund Transfers				200,000.00
Total Other Uses of Funds				\$200,000.00
Total 5250 Enterprise Fund Transfers				\$200,000.00

LEA : 125234502     Haverford Township SD

Printed 1/4/2022 9:16:56 AM

Student Sponsored Activity Fund (21)

3200 Student Activities	<u>Elementary</u>	<u>Secondary</u>	<u>Federal</u>	<u>Total</u>
800 <u>Other Objects</u>				
890 Miscellaneous Expenditures				56,899.56
Total Other Objects				\$56,899.56
Total 3200 Student Activities				\$56,899.56



LEA : 125234502     Haverford Township SD

Printed 1/4/2022 9:16:49 AM

Other Capital Projects Fund (39)

2000 Support Services		<u>Total</u>
400 <u>Purchased Property Services</u>		
440 Rentals		1,522,932.00
Total Purchased Property Services		\$1,522,932.00
800 <u>Other Objects</u>		
810 Dues and Fees		307,591.38
Total Other Objects		\$307,591.38
Total 2000 Support Services		\$1,830,523.38

LEA : 125234502     Haverford Township SD

Printed 1/4/2022 9:16:49 AM

Other Capital Projects Fund (39)

2300 Support Services – Administration

<u>Elementary</u>	<u>Secondary</u>	<u>Federal</u>	<u>Total</u>
-------------------	------------------	----------------	--------------

800 Other Objects

810 Dues and Fees			307,591.38
-------------------	--	--	------------

<b>Total Other Objects</b>			<b>\$307,591.38</b>
----------------------------	--	--	---------------------

<b>Total 2300 Support Services – Administration</b>			<b>\$307,591.38</b>
---	--	--	---------------------

LEA : 125234502     Haverford Township SD

Printed 1/4/2022 9:16:49 AM

Other Capital Projects Fund (39)

2390 Other Administration Services

<u>Elementary</u>	<u>Secondary</u>	<u>Federal</u>	<u>Total</u>
-------------------	------------------	----------------	--------------

800 Other Objects

810 Dues and Fees			307,591.38
-------------------	--	--	------------

<b>Total Other Objects</b>			<b>\$307,591.38</b>
----------------------------	--	--	---------------------

<b>Total 2390 Other Administration Services</b>			<b>\$307,591.38</b>
---	--	--	---------------------

LEA : 125234502     Haverford Township SD

Printed 1/4/2022 9:16:49 AM

Other Capital Projects Fund (39)

2800 Support Services – Central

	<u>Elementary</u>	<u>Secondary</u>	<u>Federal</u>	<u>Total</u>
400 <u>Purchased Property Services</u>				
440 Rentals				1,522,932.00
Total Purchased Property Services				\$1,522,932.00
Total 2800 Support Services – Central				\$1,522,932.00

LEA : 125234502     Haverford Township SD

Printed 1/4/2022 9:16:49 AM

Other Capital Projects Fund (39)

2840 Data Processing Services

400 Purchased Property Services

	<u>Elementary</u>	<u>Secondary</u>	<u>Federal</u>	<u>Total</u>
440 Rentals				1,522,932.00
Total Purchased Property Services				\$1,522,932.00
Total 2840 Data Processing Services				\$1,522,932.00

LEA : 125234502     Haverford Township SD

Printed 1/4/2022 9:16:59 AM

Other Capital Projects Fund (39)

4000 Facilities Acquisition, Construction and Improvement Services

Total

400 Purchased Property Services

450 Construction Services	20,220,488.29
Total Purchased Property Services	\$20,220,488.29
Total 4000 Facilities Acquisition, Construction and Improvement Services	\$20,220,488.29

LEA : 125234502     Haverford Township SD

Printed 1/4/2022 9:16:59 AM

Other Capital Projects Fund (39)

4600 Existing Building Improvement Services

Elementary

Secondary

Federal

Total

400 Purchased Property Services

450 Construction Services

20,220,488.29

Total Purchased Property Services				\$20,220,488.29
Total 4600 Existing Building Improvement Services				\$20,220,488.29

LEA : 125234502     Haverford Township SD

Printed 1/4/2022 9:17:07 AM

Other Capital Projects Fund (39)

5000 Other Expenditures and Financing Uses

Total

800 <u>Other Objects</u>	
830 Interest	1,948,906.87
Total Other Objects	\$1,948,906.87
900 <u>Other Uses of Funds</u>	
910 Redemption of Principal	13,465,000.00
Total Other Uses of Funds	\$13,465,000.00
Total 5000 Other Expenditures and Financing Uses	\$15,413,906.87



LEA : 125234502     Haverford Township SD

Printed 1/4/2022 9:17:07 AM

Other Capital Projects Fund (39)

5100 Debt Service / Other Expenditures and Financing Uses	<u>Elementary</u>	<u>Secondary</u>	<u>Federal</u>	<u>Total</u>
800 <u>Other Objects</u>				
830 Interest				1,948,906.87
Total Other Objects				\$1,948,906.87
900 <u>Other Uses of Funds</u>				
910 Redemption of Principal				13,465,000.00
Total Other Uses of Funds				\$13,465,000.00
Total 5100 Debt Service / Other Expenditures and Financing Uses				\$15,413,906.87

LEA : 125234502     Haverford Township SD

Printed 1/4/2022 9:17:07 AM

Other Capital Projects Fund (39)

5120 Debt Service – Refunded Bonds	<u>Elementary</u>	<u>Secondary</u>	<u>Federal</u>	<u>Total</u>
800 <u>Other Objects</u>				
830 Interest				1,948,906.87
Total Other Objects				\$1,948,906.87
900 <u>Other Uses of Funds</u>				
910 Redemption of Principal				13,465,000.00
Total Other Uses of Funds				\$13,465,000.00
Total 5120 Debt Service – Refunded Bonds				\$15,413,906.87

LEA : 125234502     Haverford Township SD

Printed 1/4/2022 9:17:25 AM

	<u>General Fund(10)</u>	<u>Student Sponsored Activity Fund(21)</u>	<u>Public Purpose Trust(27)</u>	<u>Other Compt Approved (28)</u>	<u>Athletic / Activity(29)</u>
<b>1000 <u>Instruction</u></b>					
1100 Regular Programs - Elementary / Secondary	51,606,361.82				
1200 Special Programs - Elementary / Secondary	24,530,720.87				
1300 Vocational Education	837,312.35				
1400 Other Instructional Programs - Elementary / Secondary	567,196.83				
1500 Nonpublic School Programs	5,680.00				
1600 Adult Education Programs	1,351,647.00				
<b>Total Instruction</b>	<b>\$78,898,918.87</b>				
<b>2000 <u>Support Services</u></b>					
2100 Support Services - Students	6,602,712.20				
2200 Support Services - Instructional Staff	4,226,645.60				
2300 Support Services - Administration	5,790,681.13				
2400 Support Services - Pupil Health	2,297,851.99				
2500 Support Services - Business	1,411,421.91				
2600 Operation and Maintenance of Plant Services	7,873,625.69				
2700 Student Transportation Services	4,932,901.80				
2800 Support Services - Central	2,656,350.84				
2900 Other Support Services	113,076.05				
<b>Total Support Services</b>	<b>\$35,905,267.21</b>				
<b>3000 <u>Operation of Non-Instructional Services</u></b>					
3200 Student Activities	1,321,905.80	56,899.56			
3300 Community Services	137,263.21				
<b>Total Operation of Non-Instructional Services</b>	<b>\$1,459,169.01</b>	<b>\$56,899.56</b>			
<b>4000 <u>Facilities Acquisition, Construction and Improvement Services</u></b>					
4600 Existing Building Improvement Services					
<b>Total Facilities Acquisition, Construction and Improvement Services</b>					
<b>5000 <u>Other Expenditures and Financing Uses</u></b>					
5100 Debt Service / Other Expenditures and Financing Uses	10,908,202.99				
5200 Interfund Transfers - Out	870,908.57				
<b>Total Other Expenditures and Financing Uses</b>	<b>\$11,779,111.56</b>				
<b>TOTAL ACTUAL EXPENDITURES &amp; OTHER FINANCING USES</b>	<b>\$128,042,466.65</b>	<b>\$56,899.56</b>			

LEA : 125234502     Haverford Township SD

Printed 1/4/2022 9:17:25 AM

	<u>Capital Reserve (690.1850)(31)</u>	<u>Capital Reserve (1431)(32)</u>	<u>Other Capital Projects Fund(39)</u>	<u>Debt Service(40)</u>	<u>Permanent(90)</u>
<b>1000 <u>Instruction</u></b>					
1100 Regular Programs - Elementary / Secondary					
1200 Special Programs - Elementary / Secondary					
1300 Vocational Education					
1400 Other Instructional Programs - Elementary / Secondary					
1500 Nonpublic School Programs					
1600 Adult Education Programs					
<b>Total Instruction</b>					
<b>2000 <u>Support Services</u></b>					
2100 Support Services - Students					
2200 Support Services - Instructional Staff					
2300 Support Services - Administration			307,591.38		
2400 Support Services - Pupil Health					
2500 Support Services - Business					
2600 Operation and Maintenance of Plant Services					
2700 Student Transportation Services					
2800 Support Services - Central			1,522,932.00		
2900 Other Support Services					
<b>Total Support Services</b>			<b>\$1,830,523.38</b>		
<b>3000 <u>Operation of Non-Instructional Services</u></b>					
3200 Student Activities					
3300 Community Services					
<b>Total Operation of Non-Instructional Services</b>					
<b>4000 <u>Facilities Acquisition, Construction and Improvement Services</u></b>					
4600 Existing Building Improvement Services			20,220,488.29		
<b>Total Facilities Acquisition, Construction and Improvement Services</b>			<b>\$20,220,488.29</b>		
<b>5000 <u>Other Expenditures and Financing Uses</u></b>					
5100 Debt Service / Other Expenditures and Financing Uses			15,413,906.87		
5200 Interfund Transfers - Out					
<b>Total Other Expenditures and Financing Uses</b>			<b>\$15,413,906.87</b>		
<b>TOTAL ACTUAL EXPENDITURES &amp; OTHER FINANCING USES</b>			<b>\$37,464,918.54</b>		

LEA : 125234502     Haverford Township SD

Printed 1/4/2022 9:17:25 AM

	<u>Total</u>
<b>1000 <u>Instruction</u></b>	
1100 Regular Programs - Elementary / Secondary	51,606,361.82
1200 Special Programs - Elementary / Secondary	24,530,720.87
1300 Vocational Education	837,312.35
1400 Other Instructional Programs - Elementary / Secondary	567,196.83
1500 Nonpublic School Programs	5,680.00
1600 Adult Education Programs	1,351,647.00
<b>Total Instruction</b>	<b>\$78,898,918.87</b>
<b>2000 <u>Support Services</u></b>	
2100 Support Services - Students	6,602,712.20
2200 Support Services - Instructional Staff	4,226,645.60
2300 Support Services - Administration	6,098,272.51
2400 Support Services - Pupil Health	2,297,851.99
2500 Support Services - Business	1,411,421.91
2600 Operation and Maintenance of Plant Services	7,873,625.69
2700 Student Transportation Services	4,932,901.80
2800 Support Services - Central	4,179,282.84
2900 Other Support Services	113,076.05
<b>Total Support Services</b>	<b>\$37,735,790.59</b>
<b>3000 <u>Operation of Non-Instructional Services</u></b>	
3200 Student Activities	1,378,805.36
3300 Community Services	137,263.21
<b>Total Operation of Non-Instructional Services</b>	<b>\$1,516,068.57</b>
<b>4000 <u>Facilities Acquisition, Construction and Improvement Services</u></b>	
4600 Existing Building Improvement Services	20,220,488.29
<b>Total Facilities Acquisition, Construction and Improvement Services</b>	<b>\$20,220,488.29</b>
<b>5000 <u>Other Expenditures and Financing Uses</u></b>	
5100 Debt Service / Other Expenditures and Financing Uses	26,322,109.86
5200 Interfund Transfers - Out	870,908.57
<b>Total Other Expenditures and Financing Uses</b>	<b>\$27,193,018.43</b>
<b>TOTAL ACTUAL EXPENDITURES &amp; OTHER FINANCING USES</b>	<b>\$165,564,284.75</b>

LEA : 125234502     Haverford Township SD

Printed 1/4/2022 9:17:35 AM

PSERS Salary Data (Salary Data should relate to the General Fund only)

Amount	Description	Amount
	Total Salary Base for salaries subject to PSERS withholding	58,147,670.39
	Total Federally Funded salaries subject to PSERS withholding	166,623.35

Title I Expenditure Data

Amount	Description	Amount
	Expenditures Funded with Current Title I Funds	179,466.00
	Expenditures Funded with Carry over Title I Funds	
Total Title I Expenditure Data		\$179,466.00

Title IV Revenue Data

Amount	Description	Amount
	Revenue from Title IV-A-1: Student Support and Academic Enrichment Grants	14,855.00
	Revenue from Title IV-B: 21st Century Community Learning Centers	

Title V Revenue Data

Amount	Description	Amount
	Revenue from Title V-B-2: Rural and Low-Income School Programs	
	Revenue from Title V-B-1: Small Rural School Achievement (Directly from the Federal Govt)	

1 .	<u>Current Special Education Expenditures/Expenses within Functions 1000, 2000, 3100, and 3200</u>	29,246,659.95
2 .	<u>Current Special Education Expenditures for Instruction Functions 1000 and 3200</u>	22,253,900.64
3 .	<u>Current Special Education Expenditures for Pupil Support Services Function 2100</u>	1,186,903.54
4 .	<u>Current Special Education Expenditures for Instructional Staff Support Services Function 2200</u>	751,496.18
5 .	<u>Current Special Education Expenditures for Student Transportation Support Services Function 2700</u>	966,066.75

**Note:** Do not report total Special Education expenditures for the functions listed above. Refer to the AFR User Manual for specific instructions on Funds/Functions/Objects to be included and excluded on each line.

Benefits for Staff Relative to Collective Bargaining Agreements

	OBJECT	COVERED	NOT COVERED	TOTAL
10 General Fund				
	211 Medical Insurance			
	212 Dental Insurance			
	215 Eye Care Insurance			
	216 Prescription Insurance			
	271 Self-Insurance Medical Benefits	9,661,670.42		9,661,670.42
	272 Self-Insurance Dental Benefits	596,556.93		596,556.93
	275 Self-Insurance Eye Care Benefits			
	276 Self-Insurance Prescription Benefits	2,721,496.67		2,721,496.67
	FUND TOTAL	\$12,979,724.02		\$12,979,724.02
50 Enterprise Fund	No Self Insurance data to report			
	211 Medical Insurance			
	212 Dental Insurance			
	215 Eye Care Insurance			
	216 Prescription Insurance			
	271 Self-Insurance Medical Benefits			
	272 Self-Insurance Dental Benefits			
	275 Self-Insurance Eye Care Benefits			
	276 Self-Insurance Prescription Benefits			
	FUND TOTAL			
60 Internal Service Fund	No Self Insurance data to report			
	211 Medical Insurance			
	212 Dental Insurance			
	215 Eye Care Insurance			
	216 Prescription Insurance			
	271 Self-Insurance Medical Benefits			
	272 Self-Insurance Dental Benefits			
	275 Self-Insurance Eye Care Benefits			
	276 Self-Insurance Prescription Benefits			
	FUND TOTAL			
Total of All Funds		\$12,979,724.02		\$12,979,724.02



LEA : 125234502     Haverford Township SD

Printed 1/4/2022 9:17:44 AM

Function	Special Education (Prior Year)	Nonspecial Education (Prior Year)	Total (Prior Year)	Special Education (Current Year)	Nonspecial Education (Current Year)	Total (Current Year)
2120 Guidance Services	1,551,035.33	1,551,035.33	3,102,070.66	1,576,675.23	1,576,675.23	3,153,350.46
2140 Psychological Services	14,814.38	14,814.37	29,628.75	569,047.90	569,047.89	1,138,095.79
2150 Speech Pathology and Audiology Services						
2160 Social Work Services	172,794.76	172,794.77	345,589.53	177,396.60	177,396.60	354,793.20
2260 Instruction and Curriculum Development Services	415,529.62	623,294.42	1,038,824.04	491,164.61	736,746.91	1,227,911.52
2350 Legal and Accounting Services	255,077.55	28,341.95	283,419.50	341,516.85	37,946.32	379,463.17
2420 Medical Services	591,367.39	65,707.49	657,074.88	710,714.84	78,968.32	789,683.16
2440 Nursing Services	351,415.76	1,054,247.26	1,405,663.02	340,598.62	1,021,795.91	1,362,394.53
2700 Student Transportation Services	2,001,793.13	3,002,689.70	5,004,482.83	1,973,160.72	2,959,741.08	4,932,901.80
Total	\$5,353,827.92	\$6,512,925.29	\$11,866,753.21	\$6,180,275.37	\$7,158,318.26	\$13,338,593.63

LEA : 125234502 Haverford Township SD

Printed 1/4/2022 9:17:49 AM

(PRINCIPAL AMOUNTS ONLY)

**GOVERNMENTAL FUNDS/ ACTIVITIES**

	Short-Term Borrowing	General Obligation Bonds/Notes	Authority Building Obligations	Other Long-Term Debt	Other Post- Employment Benefits (OPEB)	Compensated Absences	Net Pension Liability	Total
1. Debt at Beginning of Fiscal Year		134,895,000.00		8,814,892.30	11,211,810.00	1,642,734.00	187,743,550.00	344,307,986.30
2. Additional Debt Incurred During Year		25,130,000.00		1,522,932.00	1,775,228.00	144,602.00	9,955,141.00	38,527,903.00
3. Retirements and Repayments		19,770,000.00		2,725,388.00				22,495,388.00
4. Debt at End of Fiscal Year		140,255,000.00		7,612,436.30	12,987,038.00	1,787,336.00	197,698,691.00	360,340,501.30
5. Accreted Interest at End Of Fiscal Year								
6. Total Debt and Accreted Interest		140,255,000.00		7,612,436.30	12,987,038.00	1,787,336.00	197,698,691.00	360,340,501.30
7. Current Portion P&I - Due within 1 year		12,228,591.00		2,092,081.00				14,320,672.00
8. Interest Paid during current fiscal year		6,552,110.00		28,448.00				6,580,558.00

(PRINCIPAL AMOUNTS ONLY)

**PROPRIETARY FUNDS**

	Short-Term Borrowing	General Obligation Bonds/Notes	Authority Building Obligations	Other Long-Term Debt	Other Post- Employment Benefits (OPEB)	Compensated Absences	Net Pension Liability	Total
1. Debt at Beginning of Fiscal Year					101,864.00		2,240,622.00	2,342,486.00
2. Additional Debt Incurred During Year					1,927.00		118,809.00	120,736.00
3. Retirements and Repayments								
4. Debt at End of Fiscal Year					103,791.00		2,359,431.00	2,463,222.00
5. Accreted Interest at End Of Fiscal Year								
6. Total Debt and Accreted Interest					103,791.00		2,359,431.00	2,463,222.00
7. Current Portion P&I - Due within 1 year								
8. Interest Paid during current fiscal year								

LEA : 125234502     Haverford Township SD

Printed 1/4/2022 9:17:49 AM

Total Principal and Interest Payments Made by Your School - All Funds

Function	Fund		Principal (910)	Principal (920)	Interest (830)	Total (Principal +Interest)	Misc Other Uses (990)
5110	10	General Fund	6,305,000.00		4,603,202.99	10,908,202.99	
5110	20	Special Revenue Funds					
5110	30	Capital Projects Funds					
5110	40	Debt Service Fund					
5110	90	Permanent Fund					
5120	10	General Fund					
5120	20	Special Revenue Funds					
5120	30	Capital Projects Funds	13,465,000.00		1,948,906.87	15,413,906.87	
5120	40	Debt Service Fund					
Total Debt Payments - Governmental Funds			\$19,770,000.00		\$6,552,109.86	\$26,322,109.86	

Function	Fund		Principal (910)	Principal (920)	Interest (830)	Total (Principal +Interest)
5110	50	Enterprise Fund				
5110	60	Internal Service Fund				
5120	50	Enterprise Fund				
5120	60	Internal Service Fund				
Total Debt Payments - Proprietary Funds						

LEA : 125234502     Haverford Township SD

Printed 1/4/2022 9:17:49 AM

**Debt Details**  
**Governmental Funds/ Activities**

Debt Category	Debt Issue Date (MM/YYYY)	Principal Amounts Only				Current Portion Due Within One Year (Principal and Interest)	Interest Paid During Fiscal Year
		Debt at Beginning of Fiscal Year	Additions	Reductions / Repayments	Debt at End of Fiscal Year		
General Obligation Bonds/Notes – CIB	04/2021		8,610,000.00		8,610,000.00	146,108.00	
General Obligation Bonds/Notes – CIB	04/2021		1,005,000.00		1,005,000.00	114,215.00	
General Obligation Bonds/Notes – CIB	08/2020		15,515,000.00	5,000.00	15,510,000.00	435,589.00	122,805.00
General Obligation Bonds/Notes – CIB	11/2019	34,995,000.00		5,000.00	34,990,000.00	1,054,250.00	1,049,350.00
General Obligation Bonds/Notes – CIB	11/2019	8,215,000.00		25,000.00	8,190,000.00	674,500.00	410,750.00
General Obligation Bonds/Notes – CIB	03/2019	16,130,000.00		225,000.00	15,905,000.00	1,526,300.00	732,425.00
General Obligation Bonds/Notes – CIB	12/2018	9,375,000.00		5,000.00	9,370,000.00	337,131.00	332,269.00
General Obligation Bonds/Notes – CIB	06/2017	18,180,000.00		3,690,000.00	14,490,000.00	5,150,750.00	658,150.00
General Obligation Bonds/Notes – CIB	01/2015	13,465,000.00		13,465,000.00			1,948,907.00
General Obligation Bonds/Notes – CIB	01/2015	2,030,000.00		2,030,000.00			81,200.00
General Obligation Bonds/Notes – CIB	01/2009	32,505,000.00		320,000.00	32,185,000.00	2,789,748.00	1,216,254.00
Extended Term Financing Agreements		1,458,872.00	1,522,932.00	1,006,915.00	1,974,889.00	871,677.00	28,448.00
Other Long Term Debt/Liabilities		7,356,020.30		1,718,473.00	5,637,547.30	1,220,404.00	
Compensated Absences		1,642,734.00	144,602.00		1,787,336.00		
Other Post-Employment Benefits (OPEB)		11,211,810.00	1,775,228.00		12,987,038.00		
Net Pension Liability		187,743,550.00	9,955,141.00		197,698,691.00		
<b>Totals for Debt Entered:</b>		<b>\$344,307,986.30</b>	<b>\$38,527,903.00</b>	<b>\$22,495,388.00</b>	<b>\$360,340,501.30</b>	<b>\$14,320,672.00</b>	<b>\$6,580,558.00</b>

**Bond Details**  
**Proprietary Funds**

Debt Category	Debt Issue Date (MM/YYYY)	Principal Amounts Only				Current Portion Due Within One Year (Principal and Interest)	Interest Paid During Fiscal Year
		Debt at Beginning of Fiscal Year	Additions	Reductions / Repayments	Debt at End of Fiscal Year		
Other Post-Employment Benefits (OPEB)		101,864.00	1,927.00		103,791.00		
Net Pension Liability		2,240,622.00	118,809.00		2,359,431.00		
<b>Totals for Debt Entered:</b>		<b>\$2,342,486.00</b>	<b>\$120,736.00</b>		<b>\$2,463,222.00</b>		

LEA : 125234502     Haverford Township SD

General Fund (10)

Section 1: Tuition/Purchased Services as Reported within Expenditure Detail	Amount
Tuition Reported in General Fund Expenditures 1000-560	6,907,021.31
Purchased Services in General Fund Expenditures 1000-594 and 1000-597	757.21
Section 1 Total	\$6,907,778.52

Section 2: Tuition Paid to Institution Types During Fiscal Year	Tuition Paid For Nonspecial Education	Tuition Paid For Special Education	Total
1 1306 Institutions			
2 Institutionalized Children's Programs			
3 Juveniles Incarcerated in Adult Facilities			
4 Residential Treatment Facilities			
5 Other Local Education Agencies			
6 Brick and Mortar Charter Schools	18,528.36		18,528.36
7 Cyber Charter Schools	576,440.37	255,046.29	831,486.66
8 Career and Technology Centers	837,312.35		837,312.35
9 Approved Private Schools		2,480,241.87	2,480,241.87
10 PA Chartered Schools for the Deaf and Blind			
11 Private Residential Rehabilitative Institutions			
12 Juvenile Detention Centers			
13 Special Program Jointures			
14 Other Tuition Not Included Elsewhere In This Section	1,351,647.00	1,388,562.28	2,740,209.28
Section 2 Total	\$2,783,928.08	\$4,123,850.44	\$6,907,778.52

LEA : 125234502     Haverford Township SD

Printed 1/4/2022 9:18:00 AM

Food Service / Cafeteria Operations Fund (51)

3000 Operation of Non-Instructional Services		Total
100 <u>Personnel Services – Salaries</u>		
100 Personnel Services – Salaries		452,492.00
Total Personnel Services – Salaries		\$452,492.00
200 <u>Personnel Services – Employee Benefits</u>		
210 Group Insurance – Contracted Provider		81,309.00
220 Social Security Contributions		33,578.00
230 PSERS Retirement Contributions		154,820.00
280 Other Post-Employment Benefits (OPEB)		(73.00)
291 Other Retirement Plans		33,095.00
Total Personnel Services – Employee Benefits		\$302,729.00
300 <u>Purchased Professional and Technical Services</u>		
330 Other Professional Services		42,090.00
Total Purchased Professional and Technical Services		\$42,090.00
400 <u>Purchased Property Services</u>		
430 Repairs and Maintenance Services		30,441.57
Total Purchased Property Services		\$30,441.57
500 <u>Other Purchased Services</u>		
570 Food Service Management		44,902.81
580 Travel		124.88
Total Other Purchased Services		\$45,027.69
600 <u>Supplies</u>		
610 General Supplies		21,802.10
630 Food		324,865.07
Total Supplies		\$346,667.17
700 <u>Property</u>		
740 Depreciation		87,754.58
Total Property		\$87,754.58
800 <u>Other Objects</u>		
810 Dues and Fees		15,365.00
Total Other Objects		\$15,365.00
Total 3000 Operation of Non-Instructional Services		\$1,322,567.01

LEA : 125234502     Haverford Township SD

Printed 1/4/2022 9:18:00 AM

Food Service / Cafeteria Operations Fund (51)

3100 Food Services	<u>Elementary</u>	<u>Secondary</u>	<u>Federal</u>	<u>Total</u>
100 <u>Personnel Services – Salaries</u>				
100 Personnel Services – Salaries				452,492.00
Total Personnel Services – Salaries				\$452,492.00
200 <u>Personnel Services – Employee Benefits</u>				
210 Group Insurance – Contracted Provider				81,309.00
220 Social Security Contributions				33,578.00
230 PSERS Retirement Contributions				154,820.00
280 Other Post-Employment Benefits (OPEB)				(73.00)
291 Other Retirement Plans				33,095.00
Total Personnel Services – Employee Benefits				\$302,729.00
300 <u>Purchased Professional and Technical Services</u>				
330 Other Professional Services				42,090.00
Total Purchased Professional and Technical Services				\$42,090.00
400 <u>Purchased Property Services</u>				
430 Repairs and Maintenance Services				30,441.57
Total Purchased Property Services				\$30,441.57
500 <u>Other Purchased Services</u>				
570 Food Service Management				44,902.81
580 Travel				124.88
Total Other Purchased Services				\$45,027.69
600 <u>Supplies</u>				
610 General Supplies				21,802.10
630 Food				324,865.07
Total Supplies				\$346,667.17
700 <u>Property</u>				
740 Depreciation				87,754.58
Total Property				\$87,754.58
800 <u>Other Objects</u>				
810 Dues and Fees				15,365.00
Total Other Objects				\$15,365.00
Total 3100 Food Services				\$1,322,567.01

LEA : 125234502     Haverford Township SD

Printed 1/4/2022 9:17:57 AM

Internal Service Fund (60)

2000 Support Services

Total

200 Personnel Services – Employee Benefits

270 Group Insurance – Self-Insurance	10,913,892.00
--------------------------------------	---------------

<b>Total Personnel Services – Employee Benefits</b>	<b>\$10,913,892.00</b>
---	------------------------

300 Purchased Professional and Technical Services

390 Other Purchased Professional and Technical Services	1,391,175.00
---	--------------

<b>Total Purchased Professional and Technical Services</b>	<b>\$1,391,175.00</b>
--	-----------------------

<b>Total 2000 Support Services</b>	<b>\$12,305,067.00</b>
------------------------------------	------------------------



LEA : 125234502     Haverford Township SD

Printed 1/4/2022 9:17:57 AM

Internal Service Fund (60)

2800 Support Services – Central

<u>Elementary</u>	<u>Secondary</u>	<u>Federal</u>	<u>Total</u>
-------------------	------------------	----------------	--------------

200 Personnel Services – Employee Benefits

270 Group Insurance – Self-Insurance			10,913,892.00
--------------------------------------	--	--	---------------

<b>Total Personnel Services – Employee Benefits</b>			<b>\$10,913,892.00</b>
---	--	--	------------------------

300 Purchased Professional and Technical Services

390 Other Purchased Professional and Technical Services			1,391,175.00
---	--	--	--------------

<b>Total Purchased Professional and Technical Services</b>			<b>\$1,391,175.00</b>
--	--	--	-----------------------

<b>Total 2800 Support Services – Central</b>			<b>\$12,305,067.00</b>
--	--	--	------------------------

LEA : 125234502     Haverford Township SD

Printed 1/4/2022 9:17:57 AM

Internal Service Fund (60)

2890 Other Support Services Central	<u>Elementary</u>	<u>Secondary</u>	<u>Federal</u>	<u>Total</u>
200 <u>Personnel Services – Employee Benefits</u>				
270 Group Insurance – Self-Insurance				10,913,892.00
Total Personnel Services – Employee Benefits				\$10,913,892.00
300 <u>Purchased Professional and Technical Services</u>				
390 Other Purchased Professional and Technical Services				1,391,175.00
Total Purchased Professional and Technical Services				\$1,391,175.00
Total 2890 Other Support Services Central				\$12,305,067.00

	<u>Food Service(51)</u>	<u>Child Care Operations(52)</u>	<u>Other Enterprise(58)</u>	<u>Internal Service(60)</u>	<u>Total</u>
<b>2000 <u>Support Services</u></b>					
2800 Support Services - Central				12,305,067.00	12,305,067.00
<b>Total Support Services</b>				<b>\$12,305,067.00</b>	<b>\$12,305,067.00</b>
<b>3000 <u>Operation of Non-Instructional Services</u></b>					
3100 Food Services	1,322,567.01				1,322,567.01
<b>Total Operation of Non-Instructional Services</b>	<b>\$1,322,567.01</b>				<b>\$1,322,567.01</b>
<b>TOTAL ACTUAL EXPENDITURES &amp; OTHER FINANCING USES</b>	<b>\$1,322,567.01</b>			<b>\$12,305,067.00</b>	<b>\$13,627,634.01</b>

LEA : 125234502     Haverford Township SD

Printed 1/4/2022 9:18:16 AM

Fund	School	School Number	Local Personnel	Local Nonpersonnel	State Personnel	State Nonpersonnel	Federal Personnel	Federal Nonpersonnel	Total	Explanation
10										
	Chatham Park El Sch	1871	7,480,126.00	715,986.00	1,553,940.00	148,741.00	24,736.00	39,818.00	9,963,347.00	
	Chestnutwold El Sch	1876	7,564,579.00	724,070.00	1,571,485.00	150,420.00	25,016.00	40,267.00	10,075,837.00	
	Coopertown El Sch	1877	6,261,589.00	599,350.00	1,300,799.00	124,510.00	20,707.00	33,331.00	8,340,286.00	
	Haverford MS	1878	19,098,451.00	1,828,075.00	3,967,561.00	379,769.00	63,157.00	101,663.00	25,438,676.00	
	Haverford SHS	1879	23,622,721.00	2,261,131.00	4,907,444.00	469,733.00	78,119.00	125,757.00	31,464,905.00	
	Lynnewood El Sch	1874	6,997,537.00	669,794.00	1,453,686.00	139,145.00	23,140.00	37,249.00	9,320,551.00	
	Manoa El Sch	1875	8,445,304.00	808,372.00	1,754,449.00	167,933.00	27,928.00	44,955.00	11,248,941.00	
Total			79,470,307.00	7,606,778.00	16,509,364.00	1,580,251.00	262,803.00	423,040.00	105,852,543.00	