

Educational Effectiveness Survey™



Characteristics of Improving Districts

District edition

V3.1.1

South Whidbey School District

May 2021

N=20



Better Data. Better Decisions. Better Schools.

EES © 2020 Center for Educational Effectiveness, Inc. All Rights Reserved.



Help us improve the products/services you use:
<http://effectiveness.org/your-feedback-matters>



The Center for Educational Effectiveness (CEE) is a service, consulting, and research organization dedicated to the mission of partnering with K-12 schools to improve student learning.

NOTICE

The Center for Educational Effectiveness, Inc. (CEE) makes substantial effort to ensure the accurate scoring, analysis, and reporting of the results of the Educational Effectiveness Survey. However, CEE makes no warranty of any kind with regard to this material, including, but not limited to, the implied warranties of merchantability and fitness for a particular purpose. CEE shall not be liable for errors contained herein or for incidental or consequential damages in connection with the furnishing, performance, or use of this material.

No part of these materials may be copied, reproduced, republished, posted, modified, edited, transmitted, distributed, or used to create derivative works in any form or by any means without the prior written consent of Center for Educational Effectiveness, Inc. These materials are copyright protected under U.S. and international copyright laws and treaties. Violation of these laws will lead to prosecution.

Trademark notice: Center for Educational Effectiveness™ and affiliated logo, Better Data. Better Decisions. Better Schools.™ and affiliated logo, Educational Effectiveness Survey™, EES-Leadership 360™ are all trademarks of Center for Educational Effectiveness, Inc. All other trademarks cited here are the property of their respective owners.

Published by:
Center for Educational Effectiveness, Inc.
© 2003-2020 Center for Educational Effectiveness, Inc. All Rights Reserved.
Printed in the U.S.A.

Contact Information:

Phone: 425-283-0384
Fax: 425-947-0066
info@effectiveness.org
www.effectiveness.org



Better Data. Better Decisions. Better Schools.

Introduction

The district improvement planning and transformation process is supported and driven by both quantitative and qualitative data. Data should be used to inform decisions, set goals, create school improvement plans, and measure progress toward stated goals.

Effective districts realize that outcomes (student achievement, fiscal management, safety, etc.) are defined and driven by the Mission/Vision, Leadership, and the processes, programs, and culture in place in their buildings and districts.

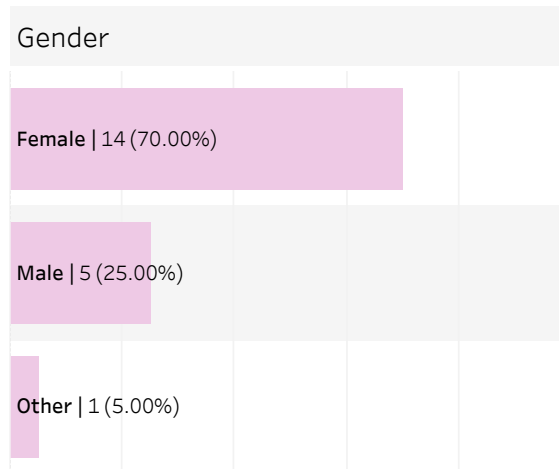
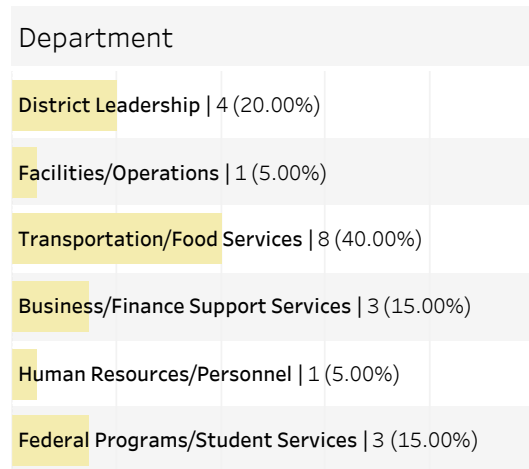
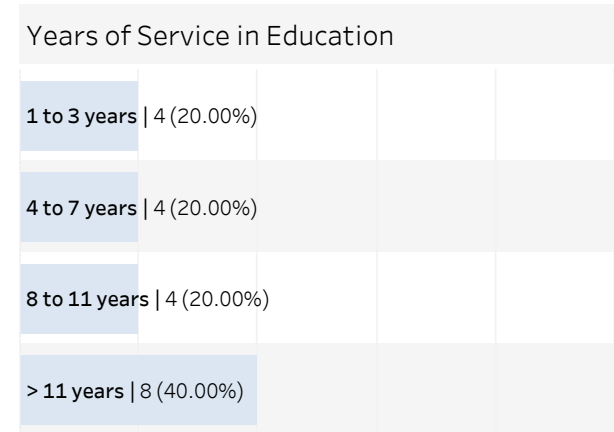
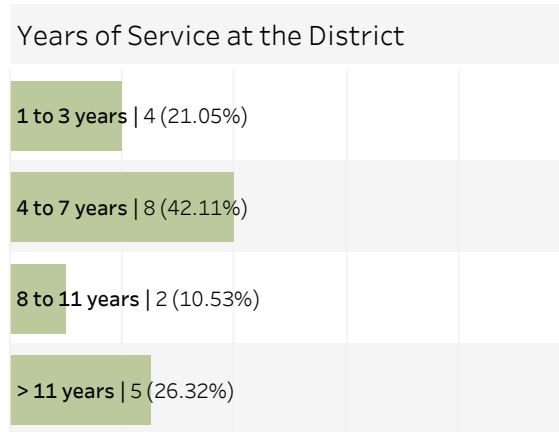
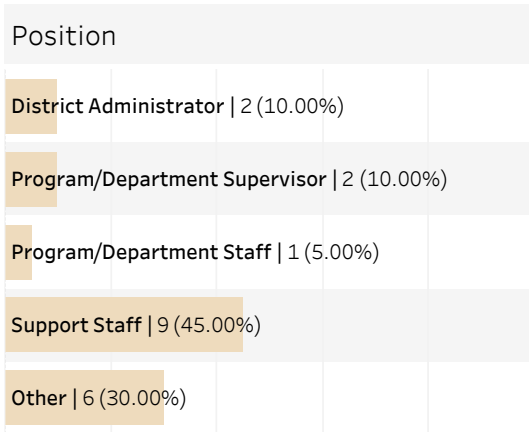
The Characteristics of Improved School Districts

The Office of the Superintendent of Public Instruction for the state of Washington identified the characteristics common to high-improving districts. Districts who are engaged in improvement activities focus on these characteristics to create and improve the system(s) that drive the outcomes. This research was refined and published as the Characteristics of Improved School Districts (Shannon and Bylsma, 2004).

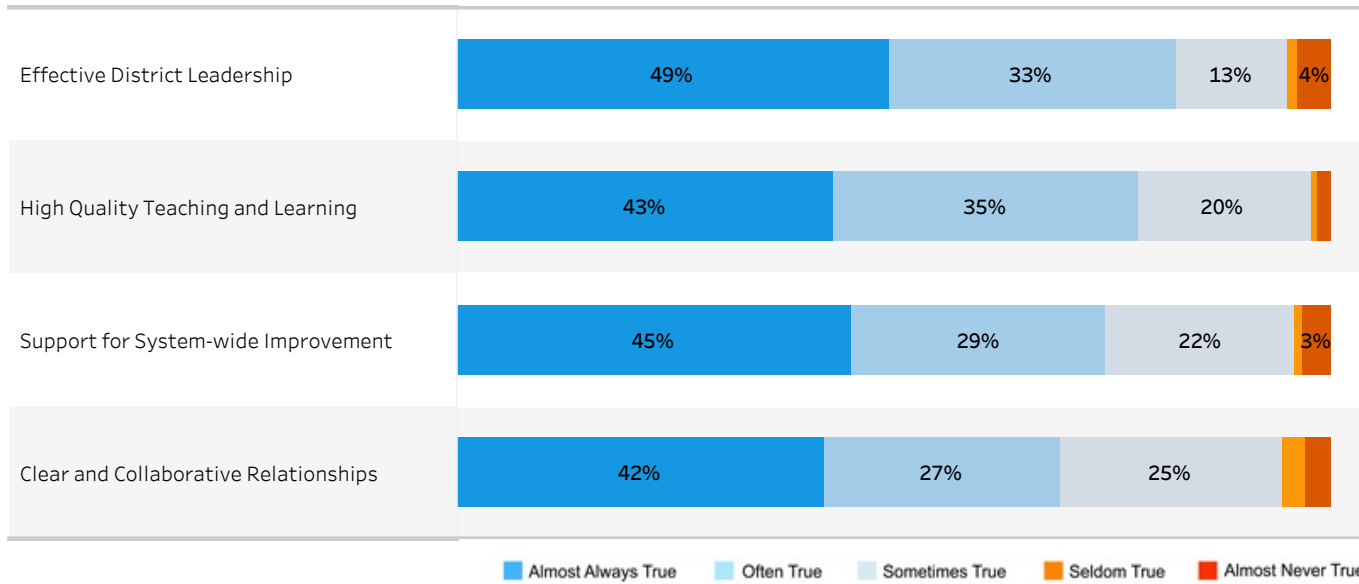
Shannon, G.S. & Bylsma, P. (2004). Characteristics of Improved School Districts: Themes from Research. Office of Superintendent of Public Instruction. Olympia, WA.

CEE's primary concern is that this report be useful and informative as you define your School and/or District Improvement Plan in order to improve student achievement. If you require any additional assistance in using your report, please contact us at info@effectiveness.org.

Demographics

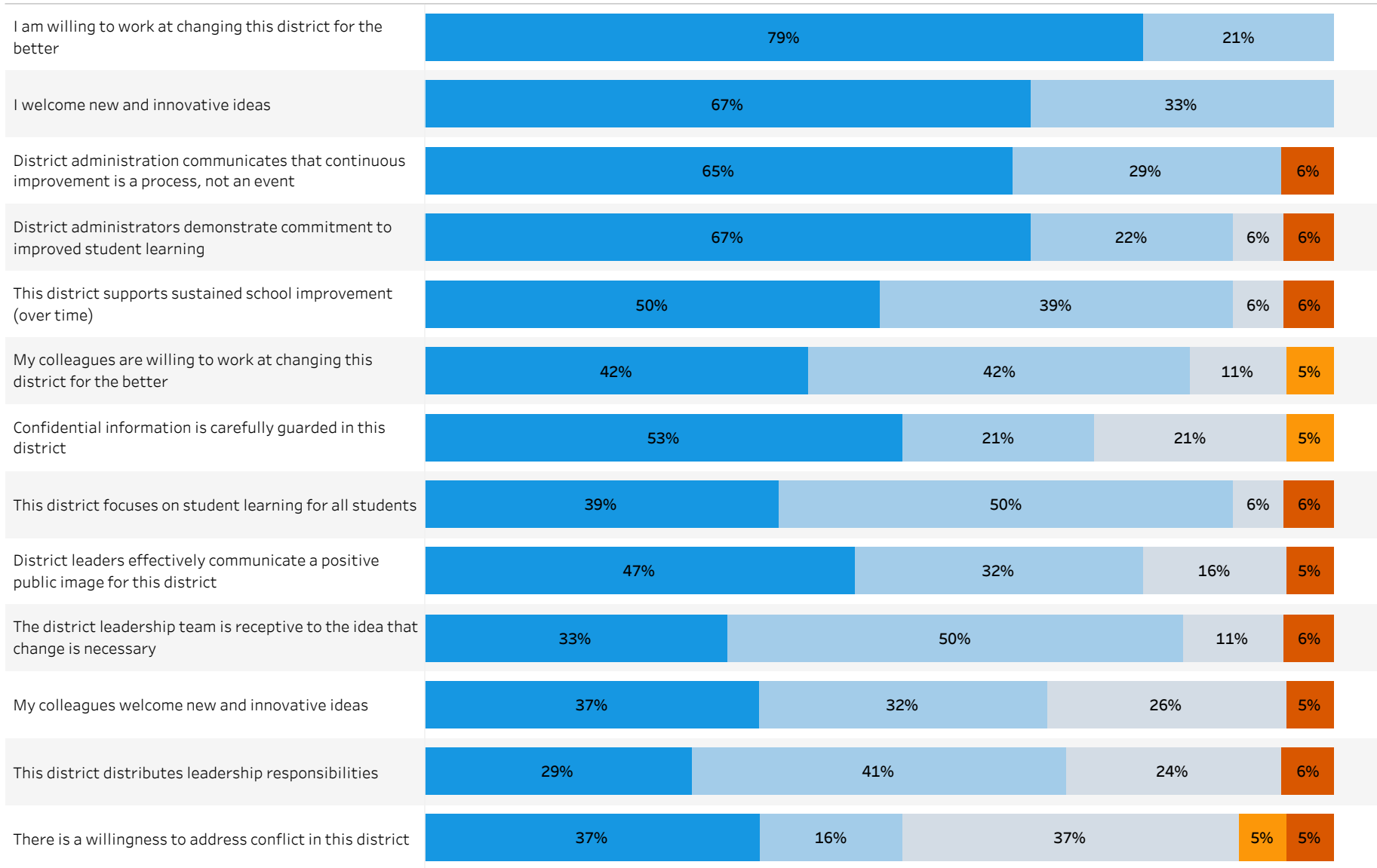


Characteristics of Improving Districts



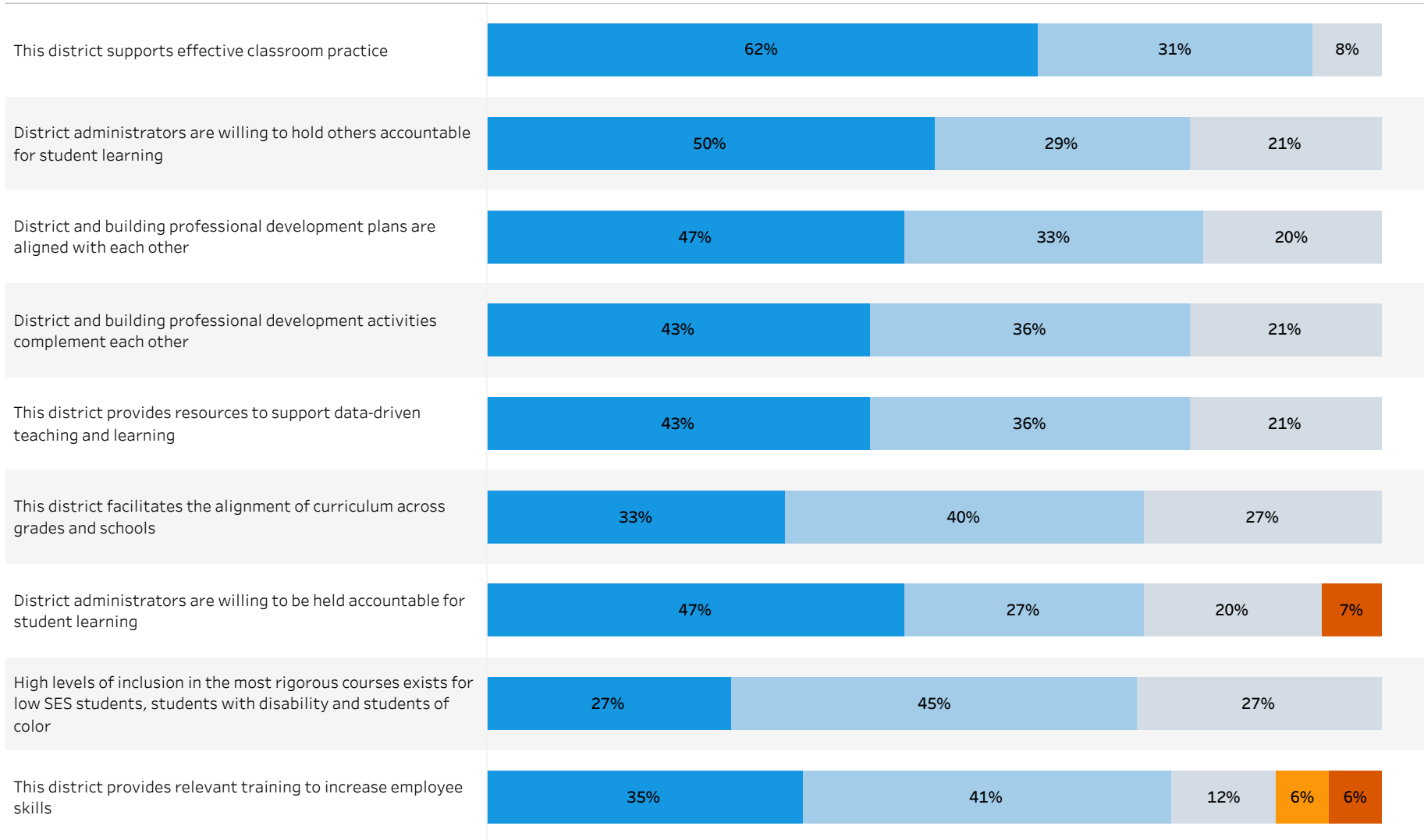
Effective District Leadership

South Whidbey School District



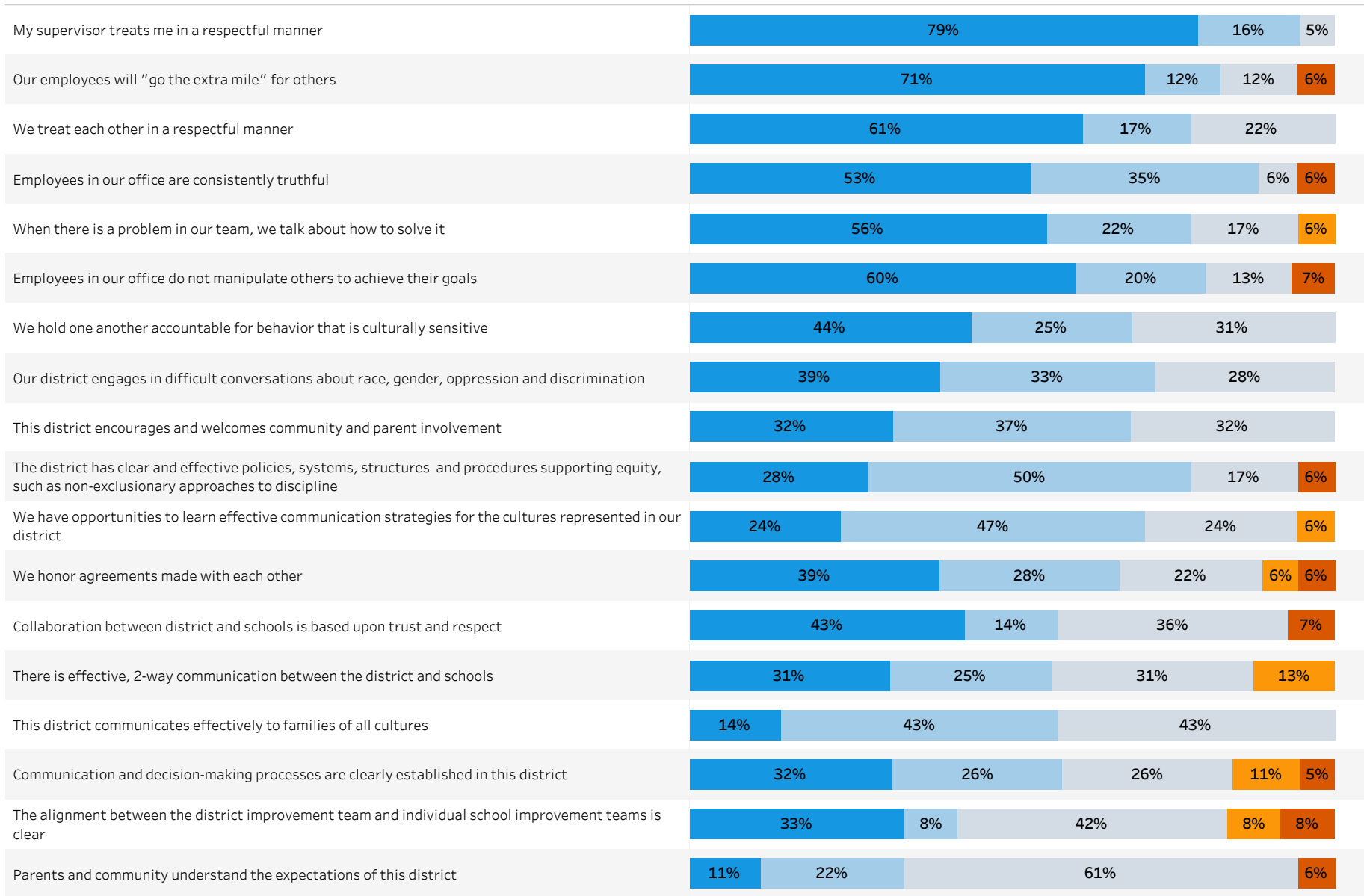
■ Almost Always True
 ■ Often True
 ■ Sometimes True
 ■ Seldom True
 ■ Almost Never True

High Quality Teaching and Learning

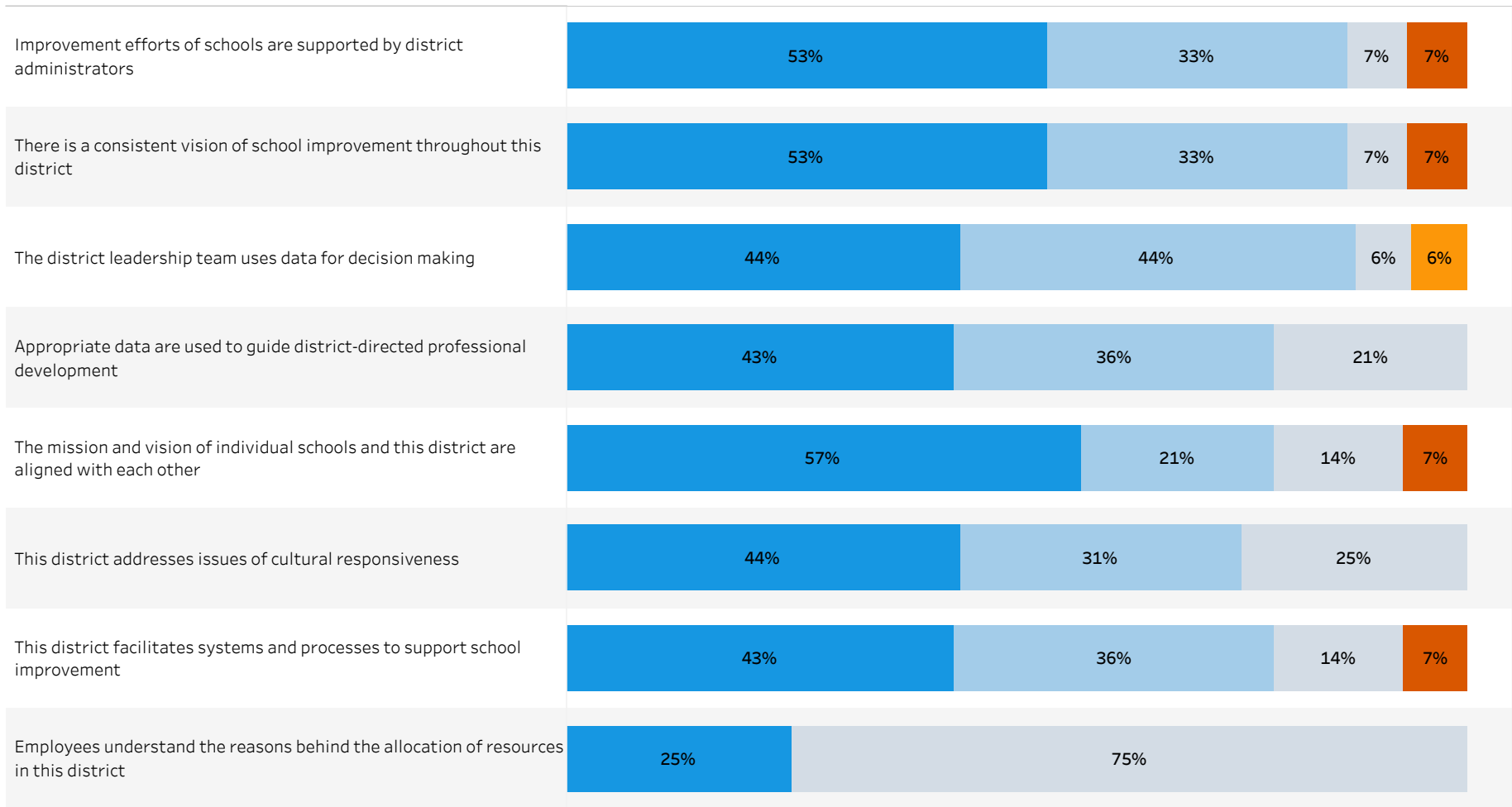


■ Almost Always True
 ■ Often True
 ■ Sometimes True
 ■ Seldom True
 ■ Almost Never True

Clear and Collaborative Relationships



Support for System-wide Improvement



■ Almost Always True
 ■ Often True
 ■ Sometimes True
 ■ Seldom True
 ■ Almost Never True