

LEA Name : Penncrest SD
Address : 18741 State Hwy 198
Saegertown , PA 16433

County : Crawford
AUN Number : 105204703
LEA Type : SD

Annual Financial Report Accuracy Certification Statement

For Fiscal Year Ending
6/30/2021

Pennsylvania Department of Education

&

Office of Comptroller Operations

PDE-2056: Intermediate Unit

PDE-2057: School District, AVTS/CTC, Charter School,
and Special Program Jointure

CERTIFICATION: By signing this page I agree that the electronic data submitted is a complete and accurate statement of the financial operations and status of the local education agency for the fiscal year. It has been prepared in accordance with generally accepted accounting principles and established Commonwealth of PA reporting guidelines.


Chief School Administrator Signature

Date

11-30-2021


Board/Secretary Signature

Date

11-30-2021

Kristen Eckart

(814)337-1600 Ext :1635

Contact Person

Contact Person Telephone Number

keckart@penncrest.org

Contact Person E-mail Address

Contact Person Fax Number

Audit Certification

Annual Financial Report:

For Fiscal Year Ending 6/30/2021

(Pursuant to PA School Code Section 218(b))

LEA Name : Penncrest SD

AUN Number : 105204703

County : Crawford

Audit Certification Due:
12/31/2021

This certification is applicable to the Annual Financial Report data submitted through the Consolidated Financial Reporting System (CFRS).

CERTIFICATION: By signing this page I agree that the financial statements of the school have been properly audited as noted above pursuant to Article XXIV, and in the auditor's professional opinion, the Annual Financial Report (PDE-2057) submitted through CFRS is materially consistent with the audited financial statements.

Chief School Administrator


Signature

11-30-2021
Date

Board Secretary


Signature

11-30-2021
Date

Kristen Eckart

Contact Person

keckart@penncrest.org

Contact Person E-mail Address

(814)337-1600

Ext :1635

Contact Person Telephone Number

Contact Person Fax Number

SECTION: 000 Local Board Procedures

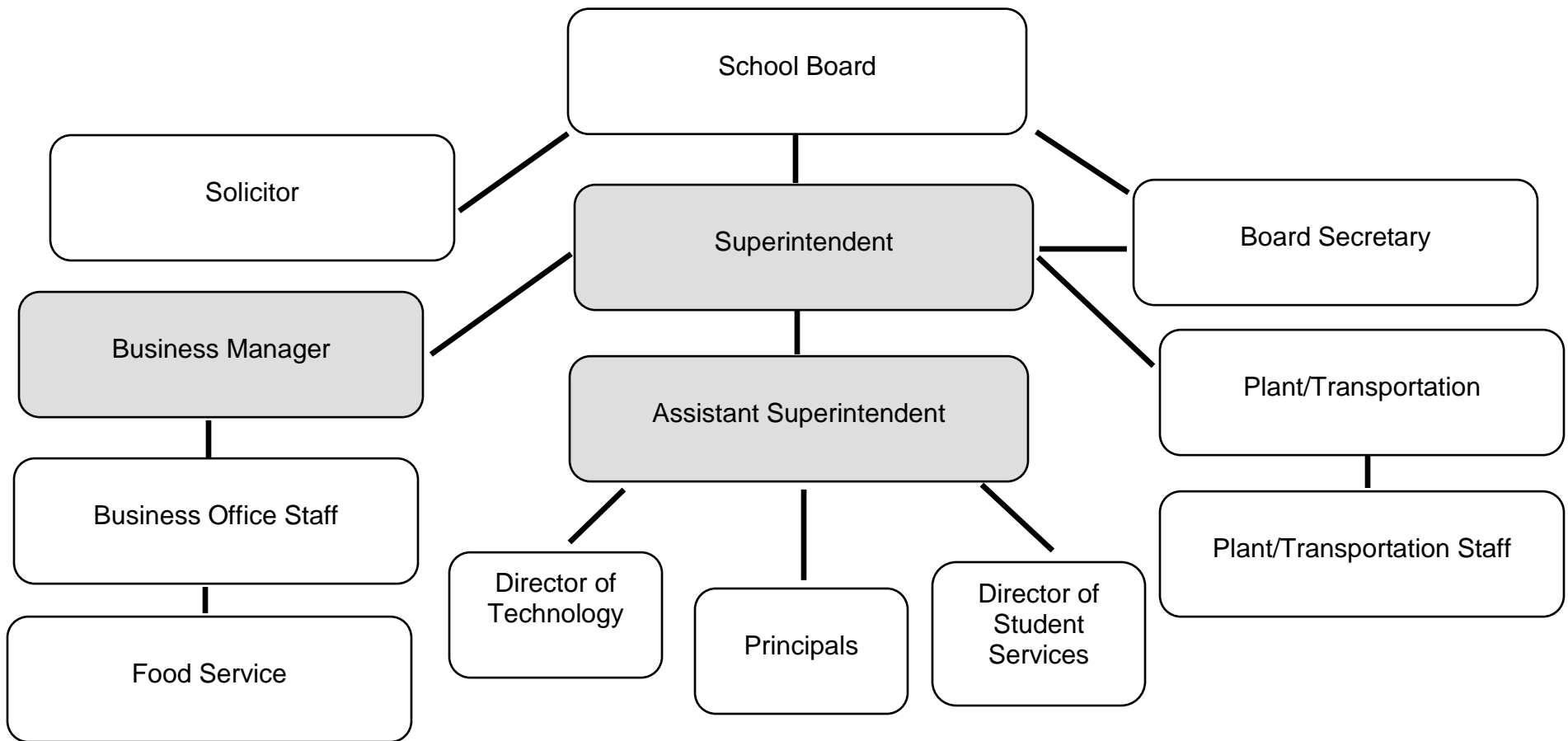
TITLE: Organization Chart

NUMBER: 008

STATUS: Active

ADOPTED: October 10, 1985

REVISED: October 11, 2018





Book	Policy Manual
Section	600 Finances
Title	GASB Statement 34
Code	622
Status	Active
Adopted	May 10, 2001
Last Revised	May 11, 2017
Last Reviewed	April 20, 2017

Purpose

The Board recognizes the need to implement the required accounting and financial reporting standards stipulated by the Pennsylvania Department of Education (PDE).

The primary objectives of implementing the Governmental Accounting Standards Board (GASB) Statement 34 are to assure compliance with state requirements, and properly account for both the financial and economic resources of the school district.

Authority

Participation of the school district in any such activity shall be in accordance with Board policy.[\[1\]](#)[\[2\]](#)

Delegation of Responsibility

The responsibility to coordinate the compilation and preparation of all information necessary to implement this policy is delegated to the Business Manager.

The designated individual shall be responsible for implementation of the necessary procedures to establish and maintain a fixed asset inventory, including depreciation schedules. Depreciation shall be computed on a straight-line basis over the useful lives of the assets, using an averaging convention. Normal maintenance and repairs shall be charged to expense as incurred; major renewals and betterments that materially extend the life or increase the value of the assets shall be capitalized. A schedule of accumulated depreciation shall be consistent from year to year. The basis for depreciation, including groups of assets and useful lives, shall be in writing and submitted for review to the independent auditors.

The Business Manager shall prepare the required Management Discussion and Analysis (MD&A). The MD&A shall be in the form required by GASB Statement 34 and shall be submitted to the Board for approval, prior to publication.

Prior to submission of the MD&A for Board approval, the school district's independent auditors shall review the MD&A in accordance with SAS No. 52, "Required Supplementary Information".

Guidelines

In order to associate debt with acquired assets and to avoid net asset deficits, any asset that has been acquired with debt proceeds shall be capitalized, regardless of the cost of the asset. The asset life of these assets shall be considered relative to the time of the respective debt amortizations.

For all other assets not acquired by debt proceeds, the dollar value of any single item for inclusion in the fixed assets account shall not be less than \$1,500.

The capitalization threshold shall be set at a level that will capture at least eighty percent (80%) of all fixed assets.

The assets listed below do not normally individually meet capitalization threshold criteria:

1. Library books.
2. Classroom texts.
3. Classroom furniture.

4. Computer equipment.

These asset category costs may be capitalized and depreciated as groups when the group's acquisition cost exceeds the capitalization threshold in any given fiscal year.

For group asset depreciation purposes, the estimated useful life of the group may be based on the weighted average or simple average of the useful life of individual items, or on an assessment of the life of the group as a whole. Periodically, the district shall review the estimated life of groups of assets and adjust the remaining depreciation life of the group.

Assets that fall below the capitalization threshold for GASB 34 reporting purposes may still be significant for insurance, warranty service, and obsolescence/replacement policy tracking purposes. The district may record and maintain these non-GASB 34 asset inventories in subsidiary ledgers.

Assets that are valued from \$500 to \$1,500 will be listed in a subsidiary ledger and reported to the district-selected certified asset appraiser for calculating insurable values.

Assets that are valued from \$1,500 and up will be listed in a subsidiary ledger and will also be reported to the district's certified asset appraiser for insurance and GASB 34 purposes.

The Business Manager will keep a ledger of all assets reported to the district's certified asset appraiser.

The district's certified asset appraiser will submit to the district a report of all assets valued from \$500 and up to be used for the replacement costs that the district's insurance company will use to determine premiums.

The district's certified asset appraiser will submit to the district a report of all assets valued from \$1,500 and up to be used for GASB 34 purposes. This report will reflect the cost of assets, depreciation for the current year and accumulated depreciation at the end of the year.

Legal

[1. 24 P.S. 613](#)

[2. 24 P.S. 218](#)

<u>Val Number</u>	<u>Description</u>	<u>Justification</u>
16011	REP - Fund 51 A negative amount has been reported in account 6991, please make corrections or provide a justification.	Change in pension related expenditures due to net pension liability
30160	Federal IDEA revenue has been reported in revenue code 8512 or 8513 rather than in code 6832 as pass thru funds. Please make corrections or provide an explanation. Receipt of IDEA funded COVID 19 SECIM grants correctly recorded to 8512 can be noted in the justification. REV8512: \$22,684.93 REV8513: \$0.00	Covid 19 SECIM Grant
30391	Revenue Detail: AFR amount must equal PDE FAI System amount. 7111, AFR Rev Detail: \$21,967,436.86 7111, PDE FAI System: \$19,116,552.86	End of the year accruals
30501	Revenue Detail: AFR amount must equal PDE FAI system amount. 7311, AFR Rev Detail: \$2,625,190.76 7311, PDE FAI System: \$2,386,536.76	End of the year accruals
30625	Revenue Detail: Current Tax Revenue amount cannot exceed 50% variance from prior year amount. Correct the data or enter a justification. 6120, Current AFR Rev Detail: \$120,779.80 6120, Prior AFR Rev Detail: \$71,971.83	Received per capita taxes in current year, higher collection rate.
30635	Revenue Detail: Current Tax Revenue amount cannot exceed 50% variance from prior year amount. Correct the data or enter a justification. 6140, Current AFR Rev Detail: \$23,932.48 6140, Prior AFR Rev Detail: \$71,971.82	Received per capita taxes on time.
41140	Expenditure Detail - There is an entry in account 5150-990 which should only include bond discounts. Please verify that only bond discounts are being reported within this code. Expenditure 5150-990, Fund 39: \$75,668.40	This is correct, the amount is for the bond discount.
50280	SOIN: Current Year AFR amount must equal Prior Year AFR amount. SOIN, Beg Bal, Gen Obl Bnds: \$9,995,000.00 PY Ending Bal, Gen Obl Bnds: \$0.00	New bond issue

50440	SESS - 2260 Instruction and Curriculum Development Services: SESS Schedule amounts for Special Education vary from prior year by 40% or more. Correct the data or enter a justification. SESS Schedule 2260: \$200,829.17 Prior Year SESS Schedule 2260: \$88,351.34	Due to remote learning more time was spent with special ed students.
60135	ICR - Proprietary Expense Detail: Entries in Fund 51 and Object 200 must equal Statement of Revenues, Expenses, and Changes in Net Position (REP) Prop Exp Dtl: Fund 51, Object 200: \$135,134.57 REP: Fund 51, Object 200: \$132,827.00	Difference is the change in pension related expenditures due to net pension liability
60139	ICR - Proprietary Expense Detail: Entries in Fund 51 and Object 600 must equal Statement of Revenues, Expenses, and Changes in Net Position (REP) Prop Exp Dtl: Fund 51, Object 600: \$672,156.13 REP: Fund 51, Object 600: \$672,154.00	Rounding

LEA : 105204703 Penncrest SD

Printed 11/24/2021 11:40:49 AM

Amounts Expressed in Whole Dollars		<u>General Fund</u> <u>(10)</u>	<u>Student Sponsored</u> <u>Activity Fund</u> <u>(21)</u>	<u>Public Purpose Trust</u> <u>(27)</u>	<u>Other Compt Approved</u> <u>(28)</u>	<u>Athletic / Activity</u> <u>(29)</u>
Assets And Deferred Outflows Of Resources						
Assets						
0100	Cash and Cash Equivalents	13,043,279				
0110	Investments	2,103,894				
0120	Taxes Receivable	1,098,312				
0130	Due From Other Funds	198,912				
0141	Due From Other Governments					
0142	State Revenue Receivable					
0143	Federal Revenue Receivable					
0145	Other Intergovernmental Revenue Receivable	8,281,951				
0146	Due from Primary Government					
0147	Due from Component Unit					
0150	Other Receivables	16,274				
0170	Inventories					
0180	Prepaid Expenses (Expenditures)	320,113				
0190	Other Current Assets					
Total Assets		\$25,062,735				
0910	Deferred Outflows of Resources					
Total Assets And Deferred Outflows Of Resources		\$25,062,735				

LEA : 105204703 Penncrest SD

Printed 11/24/2021 11:40:49 AM

Amounts Expressed in Whole Dollars		<u>Capital Reserve (690.</u> <u>1850)</u> <u>(31)</u>	<u>Capital Reserve (1431)</u> <u>(32)</u>	<u>Other Capital Projects</u> <u>Fund</u> <u>(39)</u>	<u>Debt Service</u> <u>(40)</u>	<u>Permanent</u> <u>(90)</u>
Assets And Deferred Outflows Of Resources						
Assets						
0100	Cash and Cash Equivalents			17,278,125		
0110	Investments					
0120	Taxes Receivable					
0130	Due From Other Funds					
0141	Due From Other Governments					
0142	State Revenue Receivable					
0143	Federal Revenue Receivable					
0145	Other Intergovernmental Revenue Receivable					
0146	Due from Primary Government					
0147	Due from Component Unit					
0150	Other Receivables					
0170	Inventories					
0180	Prepaid Expenses (Expenditures)					
0190	Other Current Assets					
Total Assets				\$17,278,125		
0910	Deferred Outflows of Resources					
Total Assets And Deferred Outflows Of Resources				\$17,278,125		

LEA : 105204703 Penncrest SD

Printed 11/24/2021 11:40:49 AM

Amounts Expressed in Whole Dollars		<u>Total Governmental Funds</u>
Assets And Deferred Outflows Of Resources		
Assets		
0100 Cash and Cash Equivalents	30,321,404	
0110 Investments	2,103,894	
0120 Taxes Receivable	1,098,312	
0130 Due From Other Funds	198,912	
0141 Due From Other Governments		
0142 State Revenue Receivable		
0143 Federal Revenue Receivable		
0145 Other Intergovernmental Revenue Receivable	8,281,951	
0146 Due from Primary Government		
0147 Due from Component Unit		
0150 Other Receivables	16,274	
0170 Inventories		
0180 Prepaid Expenses (Expenditures)	320,113	
0190 Other Current Assets		
Total Assets	\$42,340,860	
0910 Deferred Outflows of Resources		
Total Assets And Deferred Outflows Of Resources	\$42,340,860	

LEA : 105204703 Penncrest SD

Printed 11/24/2021 11:40:49 AM

Amounts Expressed in Whole Dollars		<u>General Fund</u> <u>(10)</u>	<u>Student Sponsored</u> <u>Activity Fund</u> <u>(21)</u>	<u>Public Purpose Trust</u> <u>(27)</u>	<u>Other Compt Approved</u> <u>(28)</u>	<u>Athletic / Activity</u> <u>(29)</u>
Liabilities And Deferred Inflows Of Resources And Fund Balances						
Liabilities						
0400	Due to Other Funds					
0411	Due to Other Governments					
0412	Due to Primary Government					
0413	Due to Component Unit					
0420	Accounts Payable	1,144,609				
0430	Contracts Payable					
0440	Current Portion of Long-Term Debt					
0450	Short-Term Payables					
0461	Accrued Salaries and Benefits	5,028,255				
0462	Payroll Deductions and Withholding					
0480	Unearned Revenues	230,799				
0490	Other Current Liabilities					
Total Liabilities		\$6,403,663				
0950	Deferred Inflows of Resources	934,906				
Fund Balances						
0810	Nonspendable Fund Balance	320,113				
0820	Restricted Fund Balance					
0830	Committed Fund Balance	1,702,507				
0840	Assigned Fund Balance	6,989,373				
0850	Unassigned Fund Balance	8,712,173				
Total Fund Balances		\$17,724,166				
Total Liabilities, Deferred Inflows Of Resources And Fund Balances		\$25,062,735				

LEA : 105204703 Penncrest SD

Printed 11/24/2021 11:40:49 AM

Amounts Expressed in Whole Dollars		<u>Capital Reserve (690.</u> <u>1850)</u> <u>(31)</u>	<u>Capital Reserve (1431)</u> <u>(32)</u>	<u>Other Capital Projects</u> <u>Fund</u> <u>(39)</u>	<u>Debt Service</u> <u>(40)</u>	<u>Permanent</u> <u>(90)</u>
Liabilities And Deferred Inflows Of Resources And Fund Balances						
Liabilities						
0400	Due to Other Funds					
0411	Due to Other Governments					
0412	Due to Primary Government					
0413	Due to Component Unit					
0420	Accounts Payable			3,069,376		
0430	Contracts Payable					
0440	Current Portion of Long-Term Debt					
0450	Short-Term Payables					
0461	Accrued Salaries and Benefits					
0462	Payroll Deductions and Withholding					
0480	Unearned Revenues					
0490	Other Current Liabilities					
Total Liabilities				\$3,069,376		
0950	Deferred Inflows of Resources					
Fund Balances						
0810	Nonspendable Fund Balance					
0820	Restricted Fund Balance					
0830	Committed Fund Balance			14,208,749		
0840	Assigned Fund Balance					
0850	Unassigned Fund Balance					
Total Fund Balances				\$14,208,749		
Total Liabilities, Deferred Inflows Of Resources And Fund Balances				\$17,278,125		

LEA : 105204703 Penncrest SD

Printed 11/24/2021 11:40:49 AM

Amounts Expressed in Whole Dollars		<u>Total Governmental Funds</u>
Liabilities And Deferred Inflows Of Resources And Fund Balances		
Liabilities		
0400 Due to Other Funds		
0411 Due to Other Governments		
0412 Due to Primary Government		
0413 Due to Component Unit		
0420 Accounts Payable	4,213,985	
0430 Contracts Payable		
0440 Current Portion of Long-Term Debt		
0450 Short-Term Payables		
0461 Accrued Salaries and Benefits	5,028,255	
0462 Payroll Deductions and Withholding		
0480 Unearned Revenues	230,799	
0490 Other Current Liabilities		
Total Liabilities	\$9,473,039	
0950 Deferred Inflows of Resources	934,906	
Fund Balances		
0810 Nonspendable Fund Balance	320,113	
0820 Restricted Fund Balance		
0830 Committed Fund Balance	15,911,256	
0840 Assigned Fund Balance	6,989,373	
0850 Unassigned Fund Balance	8,712,173	
Total Fund Balances	\$31,932,915	
Total Liabilities, Deferred Inflows Of Resources And Fund Balances	\$42,340,860	

Amounts Expressed in Whole Dollars	<u>General Fund</u> <u>(10)</u>	<u>Student Sponsored</u> <u>Activity Fund</u> <u>(21)</u>	<u>Public Purpose Trust</u> <u>(27)</u>	<u>Other Compt Approved</u> <u>(28)</u>	<u>Athletic / Activity</u> <u>(29)</u>
Revenues					
6000 Revenue from Local Sources	19,122,077				
7000 Revenue from State Sources	35,053,648				
8000 Revenue from Federal Sources	2,592,555				
Total Revenues	\$56,768,280				
Expenditures					
1000 Instruction	34,990,808				
2000 Support Services	15,717,146				
3000 Operation of Non-Instructional Services	928,632				
4000 Facilities Acquisition, Construction and Improvement Services					
5110 Debt Service	278,466				
5130 Refund of Prior Year Revenues / Receipts					
Total Expenditures	\$51,915,052				
Excess (Deficiency) Of Revenues Over Expenditures	\$4,853,228				
Other Financing Sources (Uses)					
9110 Face Value of Bonds Issued					
9120 Proceeds from Refunding of Bonds					
9130 Bond Premiums					
9200 Proceeds from Extended-Term Financing					
9300 Interfund Transfers - IN					
9400 Sale of or Compensation for Loss of Fixed Assets	111,586				
9710 Transfers from Component Units					
9720 Transfers from Primary Governments					
9910 Other Financing Sources Not Listed in the 9000 Series					
9990 Insurance Recoveries					
5120 Debt Service – Refunded Bonds					
5150 Bond Discounts					
5200 Interfund Transfers – Out	1,300,000				
5300 Transfers Out to Component Units/Primary Governments					
Total Other Financing Sources (Uses)	(\$1,188,414)				

Amounts Expressed in Whole Dollars	<u>Capital Reserve (690.1850)</u> <u>(31)</u>	<u>Capital Reserve (1431)</u> <u>(32)</u>	<u>Other Capital Projects</u> <u>Fund</u> <u>(39)</u>	<u>Debt Service</u> <u>(40)</u>	<u>Permanent</u> <u>(90)</u>
Revenues					
6000 Revenue from Local Sources			3,731		
7000 Revenue from State Sources					
8000 Revenue from Federal Sources					
Total Revenues			\$3,731		
Expenditures					
1000 Instruction					
2000 Support Services			352,723		
3000 Operation of Non-Instructional Services					
4000 Facilities Acquisition, Construction and Improvement Services			7,181,433		
5110 Debt Service					
5130 Refund of Prior Year Revenues / Receipts					
Total Expenditures			\$7,534,156		
Excess (Deficiency) Of Revenues Over Expenditures			(\$7,530,425)		
Other Financing Sources (Uses)					
9110 Face Value of Bonds Issued			19,695,000		
9120 Proceeds from Refunding of Bonds					
9130 Bond Premiums			287,925		
9200 Proceeds from Extended-Term Financing					
9300 Interfund Transfers - IN			1,300,000		
9400 Sale of or Compensation for Loss of Fixed Assets					
9710 Transfers from Component Units					
9720 Transfers from Primary Governments					
9910 Other Financing Sources Not Listed in the 9000 Series					
9990 Insurance Recoveries					
5120 Debt Service – Refunded Bonds					
5150 Bond Discounts			75,668		
5200 Interfund Transfers – Out					
5300 Transfers Out to Component Units/Primary Governments					
Total Other Financing Sources (Uses)			\$21,207,257		

Amounts Expressed in Whole Dollars		<u>Total Governmental Funds</u>
Revenues		
6000	Revenue from Local Sources	19,125,808
7000	Revenue from State Sources	35,053,648
8000	Revenue from Federal Sources	2,592,555
Total Revenues		\$56,772,011
Expenditures		
1000	Instruction	34,990,808
2000	Support Services	16,069,869
3000	Operation of Non-Instructional Services	928,632
4000	Facilities Acquisition, Construction and Improvement Services	7,181,433
5110	Debt Service	278,466
5130	Refund of Prior Year Revenues / Receipts	
Total Expenditures		\$59,449,208
Excess (Deficiency) Of Revenues Over Expenditures		(\$2,677,197)
Other Financing Sources (Uses)		
9110	Face Value of Bonds Issued	19,695,000
9120	Proceeds from Refunding of Bonds	
9130	Bond Premiums	287,925
9200	Proceeds from Extended-Term Financing	
9300	Interfund Transfers - IN	1,300,000
9400	Sale of or Compensation for Loss of Fixed Assets	111,586
9710	Transfers from Component Units	
9720	Transfers from Primary Governments	
9910	Other Financing Sources Not Listed in the 9000 Series	
9990	Insurance Recoveries	
5120	Debt Service – Refunded Bonds	
5150	Bond Discounts	75,668
5200	Interfund Transfers – Out	1,300,000
5300	Transfers Out to Component Units/Primary Governments	
Total Other Financing Sources (Uses)		\$20,018,843

Amounts Expressed in Whole Dollars		<u>General Fund</u> <u>(10)</u>	<u>Student Sponsored</u> <u>Activity Fund</u> <u>(21)</u>	<u>Public Purpose Trust</u> <u>(27)</u>	<u>Other Compt Approved</u> <u>(28)</u>	<u>Athletic / Activity</u> <u>(29)</u>
Special And Extraordinary Items						
9920	Special Items – Gains					
9930	Extraordinary Items – Gains					
5520	Special Items – Losses					
5530	Extraordinary Items – Losses					
Net Change In Fund Balances		\$3,664,814				
Fund Balance						
0001	Fund Balance - Beginning of Fiscal Year	14,059,353				
Fund Balance - End Of Year		\$17,724,167				

Amounts Expressed in Whole Dollars		<u>Capital Reserve (690.</u> <u>1850)</u> <u>(31)</u>	<u>Capital Reserve (1431)</u> <u>(32)</u>	<u>Other Capital Projects</u> <u>Fund</u> <u>(39)</u>	<u>Debt Service</u> <u>(40)</u>	<u>Permanent</u> <u>(90)</u>
Special And Extraordinary Items						
9920	Special Items – Gains					
9930	Extraordinary Items – Gains					
5520	Special Items – Losses					
5530	Extraordinary Items – Losses					
Net Change In Fund Balances				\$13,676,832		
Fund Balance						
0001	Fund Balance - Beginning of Fiscal Year			531,917		
Fund Balance - End Of Year				\$14,208,749		

Amounts Expressed in Whole Dollars		<u>Total Governmental</u> <u>Funds</u>
Special And Extraordinary Items		
9920	Special Items – Gains	
9930	Extraordinary Items – Gains	
5520	Special Items – Losses	
5530	Extraordinary Items – Losses	
Net Change In Fund Balances		\$17,341,646
Fund Balance		
0001	Fund Balance - Beginning of Fiscal Year	14,591,270
Fund Balance - End Of Year		\$31,932,916

LEA : 105204703 Penncrest SD

Printed 11/24/2021 11:41:18 AM

Amounts Expressed in Whole Dollars	<u>Food Service</u> <u>(51)</u>	<u>Child Care</u> <u>Operations</u> <u>(52)</u>	<u>Other Enterprise</u> <u>(58)</u>	<u>TOTAL</u>	<u>Internal Service</u> <u>(60)</u>
Assets And Deferred Outflows Of Resources					
Current Assets					
0100 Cash and Cash Equivalents	74,654			74,654	
0110 Investments					
0130 Due From Other Funds	243,393			243,393	
0141 Due From Other Governments					
0142 State Revenue Receivable					
0143 Federal Revenue Receivable					
0146 Due from Primary Government					
0147 Due from Component Unit					
0150 Other Receivables	1,712			1,712	
0170 Inventories	3,824			3,824	
0180 Prepaid Expenses (Expenditures)					
0190 Other Current Assets					
Total Current Assets	\$323,583			\$323,583	
Noncurrent Assets					
0211 Land					
0212 Site Improvements (Net)					
0220 Buildings and Building Improvements (Net)					
0230 Machinery, Equipment and Furniture (Net)	57,727			57,727	
0250 Construction in Progress					
0260 Long Term Prepayments					
0290 Other Noncurrent Assets					
Total Noncurrent Assets	\$57,727			\$57,727	
0910 Deferred Outflows of Resources	87,297			87,297	
Total Assets And Deferred Outflows Of Resources	\$468,607			\$468,607	

Amounts Expressed in Whole Dollars	<u>Food Service</u> <u>(51)</u>	<u>Child Care</u> <u>Operations</u> <u>(52)</u>	<u>Other Enterprise</u> <u>(58)</u>	<u>TOTAL</u>	<u>Internal Service</u> <u>(60)</u>
Liabilities And Deferred Inflows Of Resources And Net Position					
Current Liabilities					
0400 Due to Other Funds	198,912			198,912	
0411 Due to Other Governments					
0413 Due to Component Unit					
0420 Accounts Payable	127,595			127,595	
0430 Contracts Payable					
0440 Current Portion of Long-Term Debt					
0450 Short-Term Payables					
0461 Accrued Salaries and Benefits					
0462 Payroll Deductions and Withholding					
0480 Unearned Revenues					
0490 Other Current Liabilities					
Total Current Liabilities	\$326,507			\$326,507	
Noncurrent Liabilities					
0510 Bonds Payable					
0520 Extended-Term Financing Agreements Payable					
0530 Lease-Purchase Obligations					
0540 Accumulated Compensated Absences					
0550 Authority Lease Obligations					
0560 Other Post-Employment Benefits (OPEB)					
0570 Net Pension Liability					
0599 Other Noncurrent Liabilities	732,000			732,000	
Total Noncurrent Liabilities	\$732,000			\$732,000	
Total Liabilities	\$1,058,507			\$1,058,507	
0950 Deferred Inflows of Resources	88,496			88,496	
Net Position					
0791 Net Investment in Capital Assets	57,727			57,727	
0008 Restricted Net Position (0792 – 0798)	3,824			3,824	
0799 Unrestricted Net Position	(739,947)			(739,947)	
Total Net Position	(\$678,396)			(\$678,396)	
Total Liabilities And Deferred Inflows Of Resources And Net Position	\$468,607			\$468,607	

Amounts Expressed in Whole Dollars	<u>Food Service</u> <u>(51)</u>	<u>Child Care Operations</u> <u>(52)</u>	<u>Other Enterprise</u> <u>(58)</u>	<u>TOTAL</u>	<u>Internal Service</u> <u>(60)</u>
Operating Revenues					
6600 Food Service Revenue	39,571			39,571	
0071 Charges for Services					
0072 Other Operating Revenue	74,335			74,335	
Total Operating Revenues	\$113,906			\$113,906	
Operating Expenses					
100 Personnel Services – Salaries	511,387			511,387	
200 Personnel Services – Employee Benefits	132,827			132,827	
300 Purchased Professional and Technical Services	5,165			5,165	
400 Purchased Property Services	8,773			8,773	
500 Other Purchased Services	133,567			133,567	
600 Supplies	672,154			672,154	
740 Depreciation	15,125			15,125	
810 Dues and Fees					
880 Refunds of Prior Years' Receipts					
890 Miscellaneous Expenditures					
Total Operating Expenses	\$1,478,998			\$1,478,998	
Operating Income (Loss)	(\$1,365,092)			(\$1,365,092)	
Non Operating Revenues (Expenses)					
6500 Earnings on Investments					
6920 Contributions and Donations from Private Sources					
6930 Gains or Losses on Sale of Fixed Assets					
6991 Refunds of a Prior Year Expenditure	(2,308)			(2,308)	
7000 Revenue from State Sources	57,692			57,692	
8000 Revenue from Federal Sources	1,540,460			1,540,460	
9990 Insurance Recoveries					
820 Claims and Judgments Against the LEA					
830 Interest					
TOTAL Non Operating Revenues (Expenses)	\$1,595,844			\$1,595,844	
Income (Loss) Before Contributions And Transfers	\$230,752			\$230,752	

Amounts Expressed in Whole Dollars	<u>Food Service</u> (51)	<u>Child Care Operations</u> (52)	<u>Other Enterprise</u> (58)	<u>TOTAL</u>	<u>Internal Service</u> (60)
Contributions, Transfers, and Special and Extraordinary Items					
5200 Interfund Transfers – Out					
5300 Transfers Out to Component Units/Primary Governments					
5520 Special Items – Losses					
5530 Extraordinary Items – Losses					
9300 Interfund Transfers - IN					
9500 Capital Contributions					
9700 Transfers IN From Component Units/Primary Governments					
9920 Special Items – Gains					
9930 Extraordinary Items – Gains					
Change In Net Position	\$230,752			\$230,752	
0002 Net Position - Beginning of Fiscal Year	(909,148)			(909,148)	
0003 Accounting Changes / Residual Equity Transfers					
Net Position - End Of Year	(\$678,396)			(\$678,396)	

LEA : 105204703 Penncrest SD

Printed 11/24/2021 11:41:43 AM

Amounts Expressed in Whole Dollars		<u>Food Service</u> <u>(51)</u>	<u>Child Care Operations</u> <u>(52)</u>	<u>Other Enterprise</u> <u>(58)</u>	<u>TOTAL</u>	<u>Internal Service(60)</u>
Cash Flows From Operating Activities						
0011	Cash Receipts From Users	37,859			37,859	
0012	Cash Receipts From Assessments Made to Other Funds					
0013	Cash Receipts From Earnings on Investments					
0014	Cash Receipts From Other Operating Revenue	63,142			63,142	
0015	Cash Payments To Employees For Services	795,135			795,135	
0016	Cash Payments For Insurance Claims					
0017	Cash Payments To Suppliers For Goods and Services	615,173			615,173	
0018	Cash Payments For Other Operating Expenses					
Net Cash Provided By (Used For) Operating Activities		(\$1,309,307)			(\$1,309,307)	
Cash Flows From Non-Capital Financing Activities						
0021	Receipts From Local Sources - 6000					
0022	Receipts From State Sources - 7000	49,303			49,303	
0023	Receipts From Federal Sources -8000	1,245,715			1,245,715	
0024	Notes and Loans Received (Repaid)					
0025	Interest Paid on Notes/Loans - 5100-830					
0026	Operating Transfers In (Out)/Residual Equity Trans					
0027	Operating Transfers In (Out) Primary Government / Comp Unit					
0028	Receipts From Refund of Prior Year Expenditures - 6991	(2,308)			(2,308)	
0029	Special and Extraordinary Gains (losses)					
0030	Receipts from Insurance Recoveries -9990					
Net Cash Prov By (Used for) Non-Capital Financing Activities		\$1,292,710			\$1,292,710	
Cash Flows From Capital and Related Financing Activities						
0031	Payments For Fac Acq, Const, and Imp - 4000					
0032	Gain / (Loss) on Sale of Fixed Assets - 6930					
0033	Proceeds From Extended Term Financing - 9200					
0034	Principal Paid on Financing Agreements					
0035	Interest Paid on Financing Agreements - 5100-830					
0036	(Inc) Dec in Contributed Capital					
Net Cash Prov By (Used for) Capital and Related Financing Activities						
Cash Flows From Investing Activities						
0041	Earnings on Investments - 6500					
0042	Purchase of Inv Securities / Deposits to Inv Pools					
0043	Receipts From Investment Pool Withdrawals					
0044	Proceeds from Sale and Maturity of Inv Securities					

LEA : 105204703 Penncrest SD

Printed 11/24/2021 11:41:43 AM

0045 Loans Received (Paid)

Net Cash Prov By (Used for) Investing Activities

LEA : 105204703 Penncrest SD

Printed 11/24/2021 11:41:43 AM

	<u>Food Service</u> <u>(51)</u>	<u>Child Care Operations</u> <u>(52)</u>	<u>Other Enterprise</u> <u>(58)</u>	<u>TOTAL</u>	<u>Internal Service</u> <u>(60)</u>
Net Increase (Decrease) in Cash Flows	(16,597)			(16,597)	
0004 Cash and Cash Equivalents Beginning of Year	91,252			91,252	
Cash and Cash Equivalents at Year End	\$74,655			\$74,655	
<hr/>					
Reconciliation of Operating Income (Loss) To Net Cash Provided by (Used For) Operating Activities					
0005 Operating Income (Loss) per REP	(1,365,092)			(1,365,092)	
Adjustments					
0051 Depreciation and Net Amortization	15,125			15,125	
0052 Provision for Uncollectible Accounts					
0053 Other Adjustments	85,959			85,959	
Effect of Changes in Assets, Liabilities, Deferred Outflows and Deferred Inflows					
0054 (Inc) Dec In Accounts Receivable (0120-0150)	(1,712)			(1,712)	
0055 Advances to Other Funds (0160)	(148,614)			(148,614)	
0056 (Inc) Dec in Inventories (0170)	686			686	
0057 (Inc) Dec in Prepaid Expenses (0180)					
0058 (Inc) Dec in Other Current or Noncurrent Assets	(11,193)			(11,193)	
0064 Deferred Outflows (0910)	(65,918)			(65,918)	
0059 Inc (Dec) in Accounts Payable (0400-0450)	117,844			117,844	
0060 Inc (Dec) in Accrued Salaries/Benefits (0461)					
0065 Inc (Dec) in Net Pension Liabilities (0570)	32,610			32,610	
0066 Inc (Dec) in Other Postemp Benefit Oblig (0560)					
0061 Inc (Dec) in Payroll Deductions/Withholding (0462)					
0062 Inc (Dec) in Unearned Revenue (0480)					
0063 Inc (Dec) in Other Current or Noncurrent Liabilities					
0067 Deferred Inflows (0950)	31,000			31,000	
Total Adjustments	\$55,787			\$55,787	
Cash Provided By (Used for) Total	(\$1,309,305)			(\$1,309,305)	
<hr/>					

COMBINED STATEMENT OF CASH FLOWS
SCHEDULE OF NONCASH INVESTING, CAPITAL, AND FINANCING ACTIVITIES

Explanation of Transaction and Balance Sheet Effect	Amount
Total	

LEA : 105204703 Penncrest SD

Printed 11/24/2021 11:41:50 AM

Amounts Expressed in Whole Dollars		<u>Private Purpose Trust</u> <u>(71)</u>	<u>Investment Trust</u> <u>(72)</u>	<u>Pension Trust</u> <u>(73)</u>	<u>Student Activity Custodial</u> <u>(81)</u>
Assets And Deferred Outflows Of Resources					
Assets					
0100	Cash and Cash Equivalents	296,868			134,422
0110	Investments	34,940			
0130	Due From Other Funds				
0140	Due from Other Governments, Primary Government and Component Units				
0150	Other Receivables				
0170	Inventories				
0180	Prepaid Expenses (Expenditures)				
0190	Other Current Assets	146,150			
0220	Buildings and Building Improvements (Net)				
0230	Machinery, Equipment and Furniture (Net)				
Total Assets		\$477,958			\$134,422
0910	Deferred Outflows of Resources				
Total Assets And Deferred Outflows Of Resources		\$477,958			\$134,422

LEA : 105204703 Penncrest SD

Printed 11/24/2021 11:41:50 AM

Amounts Expressed in Whole Dollars		<u>Other Custodial</u> <u>(89)</u>	<u>Fiduciary Component Units</u> <u>(98)</u>	<u>Total Fiduciary Funds</u>
Assets And Deferred Outflows Of Resources				
Assets				
0100	Cash and Cash Equivalents			431,290
0110	Investments			34,940
0130	Due From Other Funds			
0140	Due from Other Governments, Primary Government and Component Units			
0150	Other Receivables			
0170	Inventories			
0180	Prepaid Expenses (Expenditures)			
0190	Other Current Assets			146,150
0220	Buildings and Building Improvements (Net)			
0230	Machinery, Equipment and Furniture (Net)			
Total Assets				\$612,380
0910	Deferred Outflows of Resources			
Total Assets And Deferred Outflows Of Resources				\$612,380

LEA : 105204703 Penncrest SD

Printed 11/24/2021 11:41:50 AM

Amounts Expressed in Whole Dollars		<u>Private Purpose Trust</u>	<u>Investment Trust</u>	<u>Pension Trust</u>	<u>Student Activity Custodial</u>
		<u>(71)</u>	<u>(72)</u>	<u>(73)</u>	<u>(81)</u>
Liabilities, Deferred Inflows Of Resources And Net Position					
Liabilities					
0400	Due to Other Funds				595
0410	Due to Other Governments, Primary Government and Component Units				
0420	Accounts Payable				
0430	Contracts Payable				
0450	Short-Term Payables				
0460	Payroll Accruals and Withholdings				
0480	Unearned Revenues				
0490	Other Current Liabilities				
Total Liabilities					\$595
0950	Deferred Inflows of Resources				
Net Position					
0791	Net Investment in Capital Assets				
0009	Restricted Net Position (0792 – 0798)	477,958			133,827
0799	Unrestricted Net Position				
Total Net Position		\$477,958			\$133,827
Total Liabilities, Deferred Inflows Of Resources And Net Position		\$477,958			\$134,422

LEA : 105204703 Penncrest SD

Printed 11/24/2021 11:41:50 AM

Amounts Expressed in Whole Dollars		<u>Other Custodial</u> <u>(89)</u>	<u>Fiduciary Component Units</u> <u>(98)</u>	<u>Total Fiduciary Funds</u>
Liabilities, Deferred Inflows Of Resources And Net Position				
Liabilities				
0400	Due to Other Funds			595
0410	Due to Other Governments, Primary Government and Component Units			
0420	Accounts Payable			
0430	Contracts Payable			
0450	Short-Term Payables			
0460	Payroll Accruals and Withholdings			
0480	Unearned Revenues			
0490	Other Current Liabilities			
Total Liabilities				\$595
0950	Deferred Inflows of Resources			
Net Position				
0791	Net Investment in Capital Assets			
0009	Restricted Net Position (0792 – 0798)			611,785
0799	Unrestricted Net Position			
Total Net Position				\$611,785
Total Liabilities, Deferred Inflows Of Resources And Net Position				\$612,380

LEA : 105204703 Penncrest SD

Printed 11/24/2021 11:41:54 AM

Amounts Expressed in Whole Dollars	<u>Private Purpose Trust</u> <u>(71)</u>	<u>Investment Trust</u> <u>(72)</u>	<u>Pension Trust</u> <u>(73)</u>	<u>Student Activity</u> <u>Custodial</u> <u>(81)</u>	<u>Other Custodial</u> <u>(89)</u>	<u>Fiduciary Component</u> <u>Units</u> <u>(98)</u>
Additions						
0091 Gifts and Contributions						
0095 Net Investment Earnings						
0092 Other Additions	13,967			44,256		
Deductions						
0093 Scholarships Awarded	8,770					
0094 Other Deductions	1,612			59,986		
Change In Net Position	\$3,585			(\$15,730)		
0006 Net Position – Beginning of Fiscal Year	474,373			149,557		
0007 Net Position Held in Trust for Pension Benefits						
Net Position - End of Fiscal Year	\$477,958			\$133,827		

LEA : 105204703 Penncrest SD

Printed 11/24/2021 11:41:54 AM

Amounts Expressed in Whole Dollars		<u>Total Fiduciary</u>
		<u>Funds</u>
Additions		
0091	Gifts and Contributions	
0095	Net Investment Earnings	
0092	Other Additions	58,223
Deductions		
0093	Scholarships Awarded	8,770
0094	Other Deductions	61,598
Change In Net Position		(\$12,145)
0006	Net Position – Beginning of Fiscal Year	623,930
0007	Net Position Held in Trust for Pension Benefits	
Net Position - End of Fiscal Year		\$611,785

	Revenue Reported In Current Year	Current Year Tax Accrual	Prior Year Tax Accrual	Taxes Collected In Current Year
Revenue from Local Sources				
6111 Current Real Estate Taxes	12,796,806.34			12,796,806.34
6113 Public Utility Realty Taxes	15,868.13			15,868.13
6114 Payments in Lieu of Current Taxes - State / Local	18,060.53			18,060.53
6120 Current Per Capita Taxes, Section 679	120,779.80			120,779.80
6141 Current Act 511 Per Capita Taxes	23,932.48			23,932.48
6151 Current Act 511 Earned Income Taxes	2,216,283.70			2,216,283.70
6153 Current Act 511 Real Estate Transfer Taxes	254,481.05			254,481.05
6411 Delinquent Real Estate Taxes	1,138,256.48			1,138,256.48
6412 Delinquent Interim Real Estate Taxes	144,795.74			144,795.74
6500 Earnings on Investments	7,182.03			
6700 Revenues from LEA Activities	271.50			
6832 Federal IDEA Revenue Received as Pass Through	535,094.28			
6920 Contributions and Donations from Private Sources	4,500.00			
6944 Receipts from Other LEAs in Pennsylvania - Education	1,634,552.17			
6991 Refunds of a Prior Year Expenditure	211,362.82			
6999 Other Revenues Not Specified Above	(149.70)			
TOTAL Revenue from Local Sources	\$19,122,077.35			\$16,729,264.25

	Revenue Reported In Current Year			
<u>Revenue from State Sources</u>				
7111 Basic Education Funding-Formula	21,967,436.86			
7112 Basic Education Funding-Social Security	932,470.61			
7160 Tuition for Orphans Subsidy	359,149.81			
7271 Special Education funds for School-Aged Pupils	2,536,448.64			
7311 Pupil Transportation Subsidy	2,625,190.76			
7312 Nonpublic and Charter School Pupil Transportation Subsidy	47,740.00			
7320 Rental and Sinking Fund Payments / Building Reimbursement Subsidy	80,832.25			
7330 Health Services (Medical, Dental, Nurse, Act 25)	48,289.90			
7340 State Property Tax Reduction Allocation	1,272,134.04			
7361 School Safety and Security Grants	40,000.00			
7505 Ready to Learn Block Grant	619,569.00			
7820 State Share of Retirement Contributions	4,524,385.80			
TOTAL Revenue from State Sources	\$35,053,647.67			

	Revenue Reported In Current Year			
<u>Revenue from Federal Sources</u>				
8512 IDEA, Part B	22,684.93			
8514 NCLB, Title I - Improving the Academic Achievement of the Disadvantaged	1,256,629.95			
8515 NCLB, Title II - Preparing, Training and Recruiting High Quality Teachers and Principals	135,499.65			
8517 NCLB, Title IV - 21St Century Schools	101,643.43			
8741 Elementary and Secondary School Emergency Relief Fund (ESSER)	384,577.23			
8743 ESSER II - Elementary and Secondary School Emergency Relief Fund	19,482.82			
8749 Other CARES Act Funding	286,213.00			
8810 School-Based Access Medicaid Reimbursement Program (SBAP) Reimbursements (Access)	365,023.89			
8820 Medical Assistance Reimbursement for Administrative Claiming (Quarterly) Program	20,799.81			
TOTAL Revenue from Federal Sources	\$2,592,554.71			

	Revenue Reported In Current Year	
<u>Other Financing Sources</u>		
9400 Sale of or Compensation for Loss of Fixed Assets	111,585.50	
TOTAL Other Financing Sources	\$111,585.50	
TOTAL FROM ALL SOURCES	\$56,879,865.23	\$16,729,264.25

LEA : 105204703 Penncrest SD

Printed 11/24/2021 11:42:09 AM

	<u>General Fund (10)</u>	<u>Student Sponsored Activity Fund (21)</u>	<u>Public Purpose Trust (27)</u>	<u>Other Compt Approved (28)</u>	<u>Athletic / Activity (29)</u>	<u>Capital Reserve (690, 1850) (31)</u>
6000 Revenue from Local Sources						
6111 Current Real Estate Taxes	12,796,806.34					
6113 Public Utility Realty Taxes	15,868.13					
6114 Payments in Lieu of Current Taxes - State / Local	18,060.53					
6120 Current Per Capita Taxes, Section 679	120,779.80					
6141 Current Act 511 Per Capita Taxes	23,932.48					
6151 Current Act 511 Earned Income Taxes	2,216,283.70					
6153 Current Act 511 Real Estate Transfer Taxes	254,481.05					
6411 Delinquent Real Estate Taxes	1,138,256.48					
6412 Delinquent Interim Real Estate Taxes	144,795.74					
6500 Earnings on Investments	7,182.03					
6700 Revenues from LEA Activities	271.50					
6832 Federal IDEA Revenue Received as Pass Through	535,094.28					
6920 Contributions and Donations from Private Sources	4,500.00					
6944 Receipts from Other LEAs in Pennsylvania - Education	1,634,552.17					
6991 Refunds of a Prior Year Expenditure	211,362.82					
6999 Other Revenues Not Specified Above	(149.70)					
6000 Total Revenue from Local Sources	\$19,122,077.35					
7000 Revenue from State Sources						
7111 Basic Education Funding-Formula	21,967,436.86					
7112 Basic Education Funding-Social Security	932,470.61					
7160 Tuition for Orphans Subsidy	359,149.81					
7271 Special Education funds for School-Aged Pupils	2,536,448.64					
7311 Pupil Transportation Subsidy	2,625,190.76					
7312 Nonpublic and Charter School Pupil Transportation Subsidy	47,740.00					
7320 Rental and Sinking Fund Payments / Building Reimbursement Subsidy	80,832.25					
7330 Health Services (Medical, Dental, Nurse, Act 25)	48,289.90					
7340 State Property Tax Reduction Allocation	1,272,134.04					
7361 School Safety and Security Grants	40,000.00					
7505 Ready to Learn Block Grant	619,569.00					
7820 State Share of Retirement Contributions	4,524,385.80					
7000 Total Revenue from State Sources	\$35,053,647.67					
8000 Revenue from Federal Sources						
8512 IDEA, Part B	22,684.93					
8514 NCLB, Title I - Improving the Academic Achievement of the Disadvantaged	1,256,629.95					

LEA : 105204703 Penncrest SD

Printed 11/24/2021 11:42:09 AM

	<u>Capital Reserve</u> <u>(1431) (32)</u>	<u>Other Capital</u> <u>Projects Fund (39)</u>	<u>Debt Service (40)</u>	<u>Permanent (90)</u>	<u>Total</u>
6000 Revenue from Local Sources					
6111 Current Real Estate Taxes					12,796,806.34
6113 Public Utility Realty Taxes					15,868.13
6114 Payments in Lieu of Current Taxes - State / Local					18,060.53
6120 Current Per Capita Taxes, Section 679					120,779.80
6141 Current Act 511 Per Capita Taxes					23,932.48
6151 Current Act 511 Earned Income Taxes					2,216,283.70
6153 Current Act 511 Real Estate Transfer Taxes					254,481.05
6411 Delinquent Real Estate Taxes					1,138,256.48
6412 Delinquent Interim Real Estate Taxes					144,795.74
6500 Earnings on Investments		3,730.86			10,912.89
6700 Revenues from LEA Activities					271.50
6832 Federal IDEA Revenue Received as Pass Through					535,094.28
6920 Contributions and Donations from Private Sources					4,500.00
6944 Receipts from Other LEAs in Pennsylvania - Education					1,634,552.17
6991 Refunds of a Prior Year Expenditure					211,362.82
6999 Other Revenues Not Specified Above					(149.70)
6000 Total Revenue from Local Sources		\$3,730.86			\$19,125,808.21
7000 Revenue from State Sources					
7111 Basic Education Funding-Formula					21,967,436.86
7112 Basic Education Funding-Social Security					932,470.61
7160 Tuition for Orphans Subsidy					359,149.81
7271 Special Education funds for School-Aged Pupils					2,536,448.64
7311 Pupil Transportation Subsidy					2,625,190.76
7312 Nonpublic and Charter School Pupil Transportation Subsidy					47,740.00
7320 Rental and Sinking Fund Payments / Building Reimbursement Subsidy					80,832.25
7330 Health Services (Medical, Dental, Nurse, Act 25)					48,289.90
7340 State Property Tax Reduction Allocation					1,272,134.04
7361 School Safety and Security Grants					40,000.00
7505 Ready to Learn Block Grant					619,569.00
7820 State Share of Retirement Contributions					4,524,385.80
7000 Total Revenue from State Sources					\$35,053,647.67
8000 Revenue from Federal Sources					
8512 IDEA, Part B					22,684.93
8514 NCLB, Title I - Improving the Academic Achievement of the Disadvantaged					1,256,629.95

LEA : 105204703 Penncrest SD

Printed 11/24/2021 11:42:09 AM

	<u>General Fund (10)</u>	<u>Student Sponsored</u> <u>Activity Fund (21)</u>	<u>Public Purpose</u> <u>Trust (27)</u>	<u>Other Compt</u> <u>Approved (28)</u>	<u>Athletic / Activity</u> <u>(29)</u>	<u>Capital Reserve</u> <u>(690, 1850) (31)</u>
8000 Revenue from Federal Sources						
8515 NCLB, Title II - Preparing, Training and Recruiting High Quality Teachers and Principals	135,499.65					
8517 NCLB, Title IV - 21st Century Schools	101,643.43					
8741 Elementary and Secondary School Emergency Relief Fund (ESSER)	384,577.23					
8743 ESSER II - Elementary and Secondary School Emergency Relief Fund	19,482.82					
8749 Other CARES Act Funding	286,213.00					
8810 School-Based Access Medicaid Reimbursement Program (SBAP) Reimbursements (Access)	365,023.89					
8820 Medical Assistance Reimbursement for Administrative Claiming (Quarterly) Program	20,799.81					
8000 Total Revenue from Federal Sources	\$2,592,554.71					
9000 Other Financing Sources						
9110 Face Value of Bonds Issued						
9130 Bond Premiums						
9310 General Fund Transfers						
9400 Sale of or Compensation for Loss of Fixed Assets	111,585.50					
9000 Total Other Financing Sources	\$111,585.50					
Total From All Sources	\$56,879,865.23					

LEA : 105204703 Penncrest SD

Printed 11/24/2021 11:42:09 AM

	<u>Capital Reserve</u> <u>(1431) (32)</u>	<u>Other Capital</u> <u>Projects Fund (39)</u>	<u>Debt Service (40)</u>	<u>Permanent (90)</u>	<u>Total</u>
8000 Revenue from Federal Sources					
8515 NCLB, Title II - Preparing, Training and Recruiting High Quality Teachers and Principals					135,499.65
8517 NCLB, Title IV - 21st Century Schools					101,643.43
8741 Elementary and Secondary School Emergency Relief Fund (ESSER)					384,577.23
8743 ESSER II - Elementary and Secondary School Emergency Relief Fund					19,482.82
8749 Other CARES Act Funding					286,213.00
8810 School-Based Access Medicaid Reimbursement Program (SBAP) Reimbursements (Access)					365,023.89
8820 Medical Assistance Reimbursement for Administrative Claiming (Quarterly) Program					20,799.81
8000 Total Revenue from Federal Sources					\$2,592,554.71
9000 Other Financing Sources					
9110 Face Value of Bonds Issued		19,695,000.00			19,695,000.00
9130 Bond Premiums		287,925.45			287,925.45
9310 General Fund Transfers		1,300,000.00			1,300,000.00
9400 Sale of or Compensation for Loss of Fixed Assets					111,585.50
9000 Total Other Financing Sources		\$21,282,925.45			\$21,394,510.95
Total From All Sources		\$21,286,656.31			\$78,166,521.54

LEA : 105204703 Penncrest SD

Printed 11/24/2021 11:42:15 AM

	<u>General Fund (10)</u>	<u>Student Sponsored Activity Fund (21)</u>	<u>Public Purpose Trust (27)</u>	<u>Other Compt Approved (28)</u>	<u>Athletic / Activity (29)</u>	<u>Capital Reserve (690. 1850) (31)</u>
Revenue from Local Sources	19,122,077.35					
Revenue from State Sources	35,053,647.67					
Revenue from Federal Sources	2,592,554.71					
Other Financing Sources	111,585.50					
Total From All Sources	\$56,879,865.23					

LEA : 105204703 Penncrest SD

Printed 11/24/2021 11:42:15 AM

	<u>Capital Reserve (1431)</u> <u>(32)</u>	<u>Other Capital Projects</u> <u>Fund (39)</u>	<u>Debt Service (40)</u>	<u>Permanent (90)</u>	<u>Total</u>
Revenue from Local Sources		3,730.86			19,125,808.21
Revenue from State Sources					35,053,647.67
Revenue from Federal Sources					2,592,554.71
Other Financing Sources		21,282,925.45			21,394,510.95
Total From All Sources		\$21,286,656.31			\$78,166,521.54

LEA : 105204703 Penncrest SD

Printed 11/24/2021 11:42:23 AM

General Fund (10)

1000 Instruction	Total
100 <u>Personnel Services – Salaries</u>	
100 Personnel Services – Salaries	15,293,221.49
Total Personnel Services – Salaries	\$15,293,221.49
200 <u>Personnel Services – Employee Benefits</u>	
210 Group Insurance – Contracted Provider	46,326.08
220 Social Security Contributions	1,174,195.85
230 PSERS Retirement Contributions	5,362,821.18
250 Unemployment Compensation	27,187.11
260 Workers’ Compensation	86,091.64
270 Group Insurance – Self-Insurance	4,850,384.30
Total Personnel Services – Employee Benefits	\$11,547,006.16
300 <u>Purchased Professional and Technical Services</u>	
322 Professional Educational Services – Ius	2,056,925.69
323 Professional Educational Services – Other Educational Agencies	706,383.75
329 Professional Educational Services – Other	162,680.55
340 Technical Services	920.00
390 Other Purchased Professional and Technical Services	167,887.27
Total Purchased Professional and Technical Services	\$3,094,797.26
400 <u>Purchased Property Services</u>	
440 Rentals	57,525.00
Total Purchased Property Services	\$57,525.00
500 <u>Other Purchased Services</u>	
530 Communications	2,363.84
561 Tuition To Other School Districts Within the State	31,840.82
562 Tuition To Pennsylvania Charter Schools	2,235,808.89
564 Tuition To Career and Technology Centers	1,435,251.27
567 Tuition To Approved Private Schools (APS) and PA Chartered Schools for the Deaf and Blind	43,470.75
580 Travel	2,162.54
Total Other Purchased Services	\$3,750,898.11
600 <u>Supplies</u>	
610 General Supplies	618,487.84
640 Books and Periodicals	352,663.86
650 Supplies & Fees – Technology Related	165,157.40
Total Supplies	\$1,136,309.10
700 <u>Property</u>	
752 Capital Equipment – Original and Additional	53,363.37
756 Capitalized Technology Equipment – Original	53,425.78
Total Property	\$106,789.15
800 <u>Other Objects</u>	
810 Dues and Fees	4,261.95
Total Other Objects	\$4,261.95
Total 1000 Instruction	\$34,990,808.22

LEA : 105204703 Penncrest SD

Printed 11/24/2021 11:42:23 AM

General Fund (10)

1100 Regular Programs – Elementary / Secondary	Elementary	Secondary	Federal	Total
100 <u>Personnel Services – Salaries</u>				
100 Personnel Services – Salaries	5,796,654.48	6,304,924.40	642,405.52	12,743,984.40
Total Personnel Services – Salaries	\$5,796,654.48	\$6,304,924.40	\$642,405.52	\$12,743,984.40
200 <u>Personnel Services – Employee Benefits</u>				
210 Group Insurance – Contracted Provider	16,602.94	18,215.55	1,897.67	36,716.16
220 Social Security Contributions	448,565.69	485,036.44	48,418.84	982,020.97
230 PSERS Retirement Contributions	2,153,026.02	2,225,203.19	106,894.81	4,485,124.02
250 Unemployment Compensation	6,652.63	17,113.13	638.86	24,404.62
260 Workers' Compensation	32,590.77	35,338.10	4,117.57	72,046.44
270 Group Insurance – Self-Insurance	1,703,429.75	1,878,030.54	199,753.81	3,781,214.10
Total Personnel Services – Employee Benefits	\$4,360,867.80	\$4,658,936.95	\$361,721.56	\$9,381,526.31
300 <u>Purchased Professional and Technical Services</u>				
323 Professional Educational Services – Other Educational Agencies	1,032.00	19,984.74	6,600.00	27,616.74
329 Professional Educational Services – Other	54,035.81	78,043.63		132,079.44
340 Technical Services			920.00	920.00
Total Purchased Professional and Technical Services	\$55,067.81	\$98,028.37	\$7,520.00	\$160,616.18
400 <u>Purchased Property Services</u>				
440 Rentals	27,834.08	29,690.92		57,525.00
Total Purchased Property Services	\$27,834.08	\$29,690.92		\$57,525.00
500 <u>Other Purchased Services</u>				
561 Tuition To Other School Districts Within the State	13,068.24	5,395.28		18,463.52
562 Tuition To Pennsylvania Charter Schools	693,349.50	905,482.96		1,598,832.46
580 Travel	(2,984.21)	841.57	(396.80)	(2,539.44)
Total Other Purchased Services	\$703,433.53	\$911,719.81	(\$396.80)	\$1,614,756.54
600 <u>Supplies</u>				
610 General Supplies	139,639.91	309,862.11	102,239.78	551,741.80
640 Books and Periodicals			299,346.04	299,346.04
650 Supplies & Fees – Technology Related	38,319.38	33,242.74	75,487.88	147,050.00
Total Supplies	\$177,959.29	\$343,104.85	\$477,073.70	\$998,137.84
700 <u>Property</u>				
752 Capital Equipment – Original and Additional		41,353.07		41,353.07
756 Capitalized Technology Equipment – Original			53,425.78	53,425.78
Total Property		\$41,353.07	\$53,425.78	\$94,778.85
800 <u>Other Objects</u>				
810 Dues and Fees	350.00	2,227.00	1,089.95	3,666.95
Total Other Objects	\$350.00	\$2,227.00	\$1,089.95	\$3,666.95
Total 1100 Regular Programs – Elementary / Secondary	\$11,122,166.99	\$12,389,985.37	\$1,542,839.71	\$25,054,992.07

LEA : 105204703 Penncrest SD

Printed 11/24/2021 11:42:23 AM

General Fund (10)

1110 Regular Programs	Elementary	Secondary	Federal	Total
100 <u>Personnel Services – Salaries</u>				
100 Personnel Services – Salaries	5,796,654.48	6,304,924.40		12,101,578.88
Total Personnel Services – Salaries	\$5,796,654.48	\$6,304,924.40		\$12,101,578.88
200 <u>Personnel Services – Employee Benefits</u>				
210 Group Insurance – Contracted Provider	16,602.94	18,215.55		34,818.49
220 Social Security Contributions	448,565.69	485,036.44		933,602.13
230 PSERS Retirement Contributions	2,153,026.02	2,225,203.19		4,378,229.21
250 Unemployment Compensation	6,652.63	17,113.13		23,765.76
260 Workers' Compensation	32,590.77	35,338.10		67,928.87
270 Group Insurance – Self-Insurance	1,703,429.75	1,878,030.54		3,581,460.29
Total Personnel Services – Employee Benefits	\$4,360,867.80	\$4,658,936.95		\$9,019,804.75
300 <u>Purchased Professional and Technical Services</u>				
323 Professional Educational Services – Other Educational Agencies	1,032.00	19,984.74		21,016.74
329 Professional Educational Services – Other	54,035.81	78,043.63		132,079.44
Total Purchased Professional and Technical Services	\$55,067.81	\$98,028.37		\$153,096.18
400 <u>Purchased Property Services</u>				
440 Rentals	27,834.08	29,690.92		57,525.00
Total Purchased Property Services	\$27,834.08	\$29,690.92		\$57,525.00
500 <u>Other Purchased Services</u>				
561 Tuition To Other School Districts Within the State	13,068.24	5,395.28		18,463.52
562 Tuition To Pennsylvania Charter Schools	693,349.50	905,482.96		1,598,832.46
580 Travel	(2,984.21)	841.57		(2,142.64)
Total Other Purchased Services	\$703,433.53	\$911,719.81		\$1,615,153.34
600 <u>Supplies</u>				
610 General Supplies	139,639.91	309,862.11		449,502.02
650 Supplies & Fees – Technology Related	38,319.38	33,242.74		71,562.12
Total Supplies	\$177,959.29	\$343,104.85		\$521,064.14
700 <u>Property</u>				
752 Capital Equipment – Original and Additional		41,353.07		41,353.07
Total Property		\$41,353.07		\$41,353.07
800 <u>Other Objects</u>				
810 Dues and Fees	350.00	2,227.00		2,577.00
Total Other Objects	\$350.00	\$2,227.00		\$2,577.00
Total 1110 Regular Programs	\$11,122,166.99	\$12,389,985.37		\$23,512,152.36

LEA : 105204703 Penncrest SD

Printed 11/24/2021 11:42:23 AM

General Fund (10)

1190 Federally-Funded Regular Programs

	<u>Elementary</u>	<u>Secondary</u>	<u>Federal</u>	<u>Total</u>
100 <u>Personnel Services – Salaries</u>				
100 Personnel Services – Salaries			642,405.52	642,405.52
Total Personnel Services – Salaries			\$642,405.52	\$642,405.52
200 <u>Personnel Services – Employee Benefits</u>				
210 Group Insurance – Contracted Provider			1,897.67	1,897.67
220 Social Security Contributions			48,418.84	48,418.84
230 PSERS Retirement Contributions			106,894.81	106,894.81
250 Unemployment Compensation			638.86	638.86
260 Workers' Compensation			4,117.57	4,117.57
270 Group Insurance – Self-Insurance			199,753.81	199,753.81
Total Personnel Services – Employee Benefits			\$361,721.56	\$361,721.56
300 <u>Purchased Professional and Technical Services</u>				
323 Professional Educational Services – Other Educational Agencies			6,600.00	6,600.00
340 Technical Services			920.00	920.00
Total Purchased Professional and Technical Services			\$7,520.00	\$7,520.00
500 <u>Other Purchased Services</u>				
580 Travel			(396.80)	(396.80)
Total Other Purchased Services			(\$396.80)	(\$396.80)
600 <u>Supplies</u>				
610 General Supplies			102,239.78	102,239.78
640 Books and Periodicals			299,346.04	299,346.04
650 Supplies & Fees – Technology Related			75,487.88	75,487.88
Total Supplies			\$477,073.70	\$477,073.70
700 <u>Property</u>				
756 Capitalized Technology Equipment – Original			53,425.78	53,425.78
Total Property			\$53,425.78	\$53,425.78
800 <u>Other Objects</u>				
810 Dues and Fees			1,089.95	1,089.95
Total Other Objects			\$1,089.95	\$1,089.95
Total 1190 Federally-Funded Regular Programs			\$1,542,839.71	\$1,542,839.71

LEA : 105204703 Penncrest SD

Printed 11/24/2021 11:42:23 AM

General Fund (10)

1200 Special Programs – Elementary / Secondary	Elementary	Secondary	Federal	Total
100 Personnel Services – Salaries				
100 Personnel Services – Salaries	1,062,422.84	1,033,087.34	394,986.41	2,490,496.59
Total Personnel Services – Salaries	\$1,062,422.84	\$1,033,087.34	\$394,986.41	\$2,490,496.59
200 Personnel Services – Employee Benefits				
210 Group Insurance – Contracted Provider	4,099.03	3,998.10	1,310.95	9,408.08
220 Social Security Contributions	80,114.93	77,892.37	29,721.50	187,728.80
230 PSERS Retirement Contributions	367,030.24	356,893.48	133,476.09	857,399.81
250 Unemployment Compensation	1,177.45	1,145.06	395.17	2,717.68
260 Workers' Compensation	5,827.57	5,661.47	2,223.38	13,712.42
270 Group Insurance – Self-Insurance	465,865.34	456,845.34	128,419.52	1,051,130.20
Total Personnel Services – Employee Benefits	\$924,114.56	\$902,435.82	\$295,546.61	\$2,122,096.99
300 Purchased Professional and Technical Services				
322 Professional Educational Services – Ius	356,089.38	265,158.62		621,248.00
323 Professional Educational Services – Other Educational Agencies			279,481.25	279,481.25
329 Professional Educational Services – Other	11,538.13	11,538.13	7,524.85	30,601.11
390 Other Purchased Professional and Technical Services	83,943.64	83,943.63		167,887.27
Total Purchased Professional and Technical Services	\$451,571.15	\$360,640.38	\$287,006.10	\$1,099,217.63
500 Other Purchased Services				
562 Tuition To Pennsylvania Charter Schools	318,488.22	318,488.21		636,976.43
567 Tuition To Approved Private Schools (APS) and PA Chartered Schools for the Deaf and Blind	21,735.38	21,735.37		43,470.75
580 Travel	1,649.47	1,649.47	204.94	3,503.88
Total Other Purchased Services	\$341,873.07	\$341,873.05	\$204.94	\$683,951.06
600 Supplies				
610 General Supplies	1,105.82	1,233.76	35,841.99	38,181.57
640 Books and Periodicals			39,636.52	39,636.52
Total Supplies	\$1,105.82	\$1,233.76	\$75,478.51	\$77,818.09
700 Property				
752 Capital Equipment – Original and Additional			12,010.30	12,010.30
Total Property			\$12,010.30	\$12,010.30
800 Other Objects				
810 Dues and Fees	297.50	297.50		595.00
Total Other Objects	\$297.50	\$297.50		\$595.00
Total 1200 Special Programs – Elementary / Secondary	\$2,781,384.94	\$2,639,567.85	\$1,065,232.87	\$6,486,185.66

LEA : 105204703 Penncrest SD

Printed 11/24/2021 11:42:23 AM

General Fund (10)

1210 Life Skills Support

	Elementary	Secondary	Federal	Total
100 <u>Personnel Services – Salaries</u>				
100 Personnel Services – Salaries	44,003.25	14,667.75	394,986.41	453,657.41
Total Personnel Services – Salaries	\$44,003.25	\$14,667.75	\$394,986.41	\$453,657.41
200 <u>Personnel Services – Employee Benefits</u>				
210 Group Insurance – Contracted Provider	151.38	50.46	1,310.95	1,512.79
220 Social Security Contributions	3,333.77	1,111.25	29,721.50	34,166.52
230 PSERS Retirement Contributions	15,205.10	5,068.36	133,476.09	153,749.55
250 Unemployment Compensation	48.56	16.18	395.17	459.91
260 Workers' Compensation	249.12	83.03	2,223.38	2,555.53
270 Group Insurance – Self-Insurance	13,530.00	4,510.00	128,419.52	146,459.52
Total Personnel Services – Employee Benefits	\$32,517.93	\$10,839.28	\$295,546.61	\$338,903.82
300 <u>Purchased Professional and Technical Services</u>				
322 Professional Educational Services – Ius	136,396.13	45,465.37		181,861.50
323 Professional Educational Services – Other Educational Agencies			279,481.25	279,481.25
329 Professional Educational Services – Other			7,524.85	7,524.85
Total Purchased Professional and Technical Services	\$136,396.13	\$45,465.37	\$287,006.10	\$468,867.60
500 <u>Other Purchased Services</u>				
580 Travel			204.94	204.94
Total Other Purchased Services			\$204.94	\$204.94
600 <u>Supplies</u>				
610 General Supplies			35,841.99	35,841.99
640 Books and Periodicals			39,636.52	39,636.52
Total Supplies			\$75,478.51	\$75,478.51
700 <u>Property</u>				
752 Capital Equipment – Original and Additional			12,010.30	12,010.30
Total Property			\$12,010.30	\$12,010.30
Total 1210 Life Skills Support	\$212,917.31	\$70,972.40	\$1,065,232.87	\$1,349,122.58

LEA : 105204703 Penncrest SD

Printed 11/24/2021 11:42:23 AM

General Fund (10)

1220 Sensory Support

	<u>Elementary</u>	<u>Secondary</u>	<u>Federal</u>	<u>Total</u>
100 <u>Personnel Services – Salaries</u>				
100 Personnel Services – Salaries	87,000.61	87,000.61		174,001.22
Total Personnel Services – Salaries	\$87,000.61	\$87,000.61		\$174,001.22
200 <u>Personnel Services – Employee Benefits</u>				
210 Group Insurance – Contracted Provider	302.26	302.26		604.52
220 Social Security Contributions	6,546.77	6,546.76		13,093.53
230 PSERS Retirement Contributions	29,809.56	29,809.55		59,619.11
250 Unemployment Compensation	96.52	96.51		193.03
260 Workers' Compensation	492.95	492.95		985.90
270 Group Insurance – Self-Insurance	27,059.50	27,059.50		54,119.00
Total Personnel Services – Employee Benefits	\$64,307.56	\$64,307.53		\$128,615.09
300 <u>Purchased Professional and Technical Services</u>				
322 Professional Educational Services – Ius	37,109.01	37,109.00		74,218.01
Total Purchased Professional and Technical Services	\$37,109.01	\$37,109.00		\$74,218.01
Total 1220 Sensory Support	\$188,417.18	\$188,417.14		\$376,834.32

LEA : 105204703 Penncrest SD

Printed 11/24/2021 11:42:23 AM

General Fund (10)

1230 Emotional Support	Elementary	Secondary	Federal	Total
100 <u>Personnel Services – Salaries</u>				
100 Personnel Services – Salaries	98,098.00	98,098.00		196,196.00
Total Personnel Services – Salaries	\$98,098.00	\$98,098.00		\$196,196.00
200 <u>Personnel Services – Employee Benefits</u>				
210 Group Insurance – Contracted Provider	302.26	302.26		604.52
220 Social Security Contributions	7,440.68	7,440.67		14,881.35
230 PSERS Retirement Contributions	33,897.63	33,897.63		67,795.26
250 Unemployment Compensation	108.65	108.65		217.30
260 Workers' Compensation	555.41	555.41		1,110.82
270 Group Insurance – Self-Insurance	27,059.50	27,059.50		54,119.00
Total Personnel Services – Employee Benefits	\$69,364.13	\$69,364.12		\$138,728.25
300 <u>Purchased Professional and Technical Services</u>				
322 Professional Educational Services – Ius	17,111.25	17,111.25		34,222.50
390 Other Purchased Professional and Technical Services	23,742.42	23,742.42		47,484.84
Total Purchased Professional and Technical Services	\$40,853.67	\$40,853.67		\$81,707.34
Total 1230 Emotional Support	\$208,315.80	\$208,315.79		\$416,631.59

LEA : 105204703 Penncrest SD

Printed 11/24/2021 11:42:23 AM

General Fund (10)				
1240 Academic Support	<u>Elementary</u>	<u>Secondary</u>	<u>Federal</u>	<u>Total</u>
100 <u>Personnel Services – Salaries</u>				
100 Personnel Services – Salaries	815,576.90	815,576.90		1,631,153.80
Total Personnel Services – Salaries	\$815,576.90	\$815,576.90		\$1,631,153.80
200 <u>Personnel Services – Employee Benefits</u>				
210 Group Insurance – Contracted Provider	3,343.13	3,343.12		6,686.25
220 Social Security Contributions	61,442.20	61,442.19		122,884.39
230 PSERS Retirement Contributions	280,771.27	280,771.27		561,542.54
250 Unemployment Compensation	903.95	903.95		1,807.90
260 Workers' Compensation	4,429.99	4,429.98		8,859.97
270 Group Insurance – Self-Insurance	398,216.34	398,216.34		796,432.68
Total Personnel Services – Employee Benefits	\$749,106.88	\$749,106.85		\$1,498,213.73
300 <u>Purchased Professional and Technical Services</u>				
390 Other Purchased Professional and Technical Services	1,441.39	1,441.38		2,882.77
Total Purchased Professional and Technical Services	\$1,441.39	\$1,441.38		\$2,882.77
600 <u>Supplies</u>				
610 General Supplies	175.98	303.93		479.91
Total Supplies	\$175.98	\$303.93		\$479.91
Total 1240 Academic Support	\$1,566,301.15	\$1,566,429.06		\$3,132,730.21

LEA : 105204703 Penncrest SD

Printed 11/24/2021 11:42:23 AM

General Fund (10)

1241 Learning Support – Public	<u>Elementary</u>	<u>Secondary</u>	<u>Federal</u>	<u>Total</u>
100 <u>Personnel Services – Salaries</u>				
100 Personnel Services – Salaries	742,823.40	742,823.40		1,485,646.80
Total Personnel Services – Salaries	\$742,823.40	\$742,823.40		\$1,485,646.80
200 <u>Personnel Services – Employee Benefits</u>				
210 Group Insurance – Contracted Provider	3,145.16	3,145.16		6,290.32
220 Social Security Contributions	55,926.44	55,926.43		111,852.87
230 PSERS Retirement Contributions	255,631.01	255,631.01		511,262.02
250 Unemployment Compensation	823.18	823.18		1,646.36
260 Workers' Compensation	4,017.81	4,017.80		8,035.61
270 Group Insurance – Self-Insurance	381,229.19	381,229.19		762,458.38
Total Personnel Services – Employee Benefits	\$700,772.79	\$700,772.77		\$1,401,545.56
600 <u>Supplies</u>				
610 General Supplies		127.96		127.96
Total Supplies		\$127.96		\$127.96
Total 1241 Learning Support – Public	\$1,443,596.19	\$1,443,724.13		\$2,887,320.32

LEA : 105204703 Penncrest SD

Printed 11/24/2021 11:42:23 AM

General Fund (10)				
1243 Gifted Support	<u>Elementary</u>	<u>Secondary</u>	<u>Federal</u>	<u>Total</u>
100 <u>Personnel Services – Salaries</u>				
100 Personnel Services – Salaries	72,753.50	72,753.50		145,507.00
Total Personnel Services – Salaries	\$72,753.50	\$72,753.50		\$145,507.00
200 <u>Personnel Services – Employee Benefits</u>				
210 Group Insurance – Contracted Provider	197.97	197.96		395.93
220 Social Security Contributions	5,515.76	5,515.76		11,031.52
230 PSERS Retirement Contributions	25,140.26	25,140.26		50,280.52
250 Unemployment Compensation	80.77	80.77		161.54
260 Workers' Compensation	412.18	412.18		824.36
270 Group Insurance – Self-Insurance	16,987.15	16,987.15		33,974.30
Total Personnel Services – Employee Benefits	\$48,334.09	\$48,334.08		\$96,668.17
300 <u>Purchased Professional and Technical Services</u>				
390 Other Purchased Professional and Technical Services	1,441.39	1,441.38		2,882.77
Total Purchased Professional and Technical Services	\$1,441.39	\$1,441.38		\$2,882.77
600 <u>Supplies</u>				
610 General Supplies	175.98	175.97		351.95
Total Supplies	\$175.98	\$175.97		\$351.95
Total 1243 Gifted Support	\$122,704.96	\$122,704.93		\$245,409.89

LEA : 105204703 Penncrest SD

Printed 11/24/2021 11:42:23 AM

General Fund (10)

1260 Physical Support

	<u>Elementary</u>	<u>Secondary</u>	<u>Federal</u>	<u>Total</u>
300 <u>Purchased Professional and Technical Services</u>				
322 Professional Educational Services – lus	84,595.82	84,595.82		169,191.64
Total Purchased Professional and Technical Services	\$84,595.82	\$84,595.82		\$169,191.64
Total 1260 Physical Support	\$84,595.82	\$84,595.82		\$169,191.64

LEA : 105204703 Penncrest SD

Printed 11/24/2021 11:42:23 AM

General Fund (10)

1270 Multi-Handicapped Support

	<u>Elementary</u>	<u>Secondary</u>	<u>Federal</u>	<u>Total</u>
300 <u>Purchased Professional and Technical Services</u>				
322 Professional Educational Services – lus	95,194.22	95,194.23		190,388.45
Total Purchased Professional and Technical Services	\$95,194.22	\$95,194.23		\$190,388.45
Total 1270 Multi-Handicapped Support	\$95,194.22	\$95,194.23		\$190,388.45

LEA : 105204703 Penncrest SD

Printed 11/24/2021 11:42:23 AM

General Fund (10)

1290 Special Programs - Other Support	Elementary	Secondary	Federal	Total
100 Personnel Services – Salaries				
100 Personnel Services – Salaries	17,744.08	17,744.08		35,488.16
Total Personnel Services – Salaries	\$17,744.08	\$17,744.08		\$35,488.16
200 Personnel Services – Employee Benefits				
220 Social Security Contributions	1,351.51	1,351.50		2,703.01
230 PSERS Retirement Contributions	7,346.68	7,346.67		14,693.35
250 Unemployment Compensation	19.77	19.77		39.54
260 Workers' Compensation	100.10	100.10		200.20
Total Personnel Services – Employee Benefits	\$8,818.06	\$8,818.04		\$17,636.10
300 Purchased Professional and Technical Services				
322 Professional Educational Services – Ius	(14,317.05)	(14,317.05)		(28,634.10)
329 Professional Educational Services – Other	11,538.13	11,538.13		23,076.26
390 Other Purchased Professional and Technical Services	58,759.83	58,759.83		117,519.66
Total Purchased Professional and Technical Services	\$55,980.91	\$55,980.91		\$111,961.82
500 Other Purchased Services				
562 Tuition To Pennsylvania Charter Schools	318,488.22	318,488.21		636,976.43
567 Tuition To Approved Private Schools (APS) and PA Chartered Schools for the Deaf and Blind	21,735.38	21,735.37		43,470.75
580 Travel	1,649.47	1,649.47		3,298.94
Total Other Purchased Services	\$341,873.07	\$341,873.05		\$683,746.12
600 Supplies				
610 General Supplies	929.84	929.83		1,859.67
Total Supplies	\$929.84	\$929.83		\$1,859.67
800 Other Objects				
810 Dues and Fees	297.50	297.50		595.00
Total Other Objects	\$297.50	\$297.50		\$595.00
Total 1290 Special Programs - Other Support	\$425,643.46	\$425,643.41		\$851,286.87

LEA : 105204703 Penncrest SD

Printed 11/24/2021 11:42:23 AM

General Fund (10)

1300 Vocational Education

500 Other Purchased Services

	<u>Elementary</u>	<u>Secondary</u>	<u>Federal</u>	<u>Total</u>
564 Tuition To Career and Technology Centers		1,435,251.27		1,435,251.27
Total Other Purchased Services		\$1,435,251.27		\$1,435,251.27
Total 1300 Vocational Education		\$1,435,251.27		\$1,435,251.27

LEA : 105204703 Penncrest SD

Printed 11/24/2021 11:42:23 AM

General Fund (10)				
1400 Other Instructional Programs – Elementary / Secondary	<u>Elementary</u>	<u>Secondary</u>	<u>Federal</u>	<u>Total</u>
100 <u>Personnel Services – Salaries</u>				
100 Personnel Services – Salaries		58,740.50		58,740.50
Total Personnel Services – Salaries		\$58,740.50		\$58,740.50
200 <u>Personnel Services – Employee Benefits</u>				
210 Group Insurance – Contracted Provider		201.84		201.84
220 Social Security Contributions		4,446.08		4,446.08
230 PSERS Retirement Contributions		20,297.35		20,297.35
250 Unemployment Compensation		64.81		64.81
260 Workers' Compensation		332.78		332.78
270 Group Insurance – Self-Insurance		18,040.00		18,040.00
Total Personnel Services – Employee Benefits		\$43,382.86		\$43,382.86
300 <u>Purchased Professional and Technical Services</u>				
322 Professional Educational Services – Ius	170,501.44	1,265,176.25		1,435,677.69
323 Professional Educational Services – Other Educational Agencies		63,000.00	26,530.00	89,530.00
Total Purchased Professional and Technical Services	\$170,501.44	\$1,328,176.25	\$26,530.00	\$1,525,207.69
500 <u>Other Purchased Services</u>				
561 Tuition To Other School Districts Within the State		13,377.30		13,377.30
580 Travel			1,198.10	1,198.10
Total Other Purchased Services		\$13,377.30	\$1,198.10	\$14,575.40
600 <u>Supplies</u>				
610 General Supplies			20,956.88	20,956.88
640 Books and Periodicals			10,044.50	10,044.50
650 Supplies & Fees – Technology Related			17,955.00	17,955.00
Total Supplies			\$48,956.38	\$48,956.38
Total 1400 Other Instructional Programs – Elementary / Secondary	\$170,501.44	\$1,443,676.91	\$76,684.48	\$1,690,862.83

LEA : 105204703 Penncrest SD

Printed 11/24/2021 11:42:23 AM

General Fund (10)

1440 Alternative Regular Education Programs	<u>Elementary</u>	<u>Secondary</u>	<u>Federal</u>	<u>Total</u>
300 <u>Purchased Professional and Technical Services</u>				
322 Professional Educational Services – Ius	170,501.44	1,265,176.25		1,435,677.69
323 Professional Educational Services – Other Educational Agencies		63,000.00		63,000.00
Total Purchased Professional and Technical Services	\$170,501.44	\$1,328,176.25		\$1,498,677.69
500 <u>Other Purchased Services</u>				
561 Tuition To Other School Districts Within the State		13,377.30		13,377.30
Total Other Purchased Services		\$13,377.30		\$13,377.30
Total 1440 Alternative Regular Education Programs	\$170,501.44	\$1,341,553.55		\$1,512,054.99

LEA : 105204703 Penncrest SD

Printed 11/24/2021 11:42:23 AM

General Fund (10)

1441 Adjudicated / Court-Placed Programs	<u>Elementary</u>	<u>Secondary</u>	<u>Federal</u>	<u>Total</u>
300 <u>Purchased Professional and Technical Services</u>				
322 Professional Educational Services – lus	170,501.44	1,265,176.25		1,435,677.69
Total Purchased Professional and Technical Services	\$170,501.44	\$1,265,176.25		\$1,435,677.69
500 <u>Other Purchased Services</u>				
561 Tuition To Other School Districts Within the State		13,377.30		13,377.30
Total Other Purchased Services		\$13,377.30		\$13,377.30
Total 1441 Adjudicated / Court-Placed Programs	\$170,501.44	\$1,278,553.55		\$1,449,054.99

LEA : 105204703 Penncrest SD

Printed 11/24/2021 11:42:23 AM

General Fund (10)

1442 Alternative Education Programs

	<u>Elementary</u>	<u>Secondary</u>	<u>Federal</u>	<u>Total</u>
300 <u>Purchased Professional and Technical Services</u>				
323 Professional Educational Services – Other Educational Agencies		63,000.00		63,000.00
Total Purchased Professional and Technical Services		\$63,000.00		\$63,000.00
Total 1442 Alternative Education Programs		\$63,000.00		\$63,000.00

LEA : 105204703 Penncrest SD

Printed 11/24/2021 11:42:23 AM

General Fund (10)				
1490 Additional Other Instructional Programs	<u>Elementary</u>	<u>Secondary</u>	<u>Federal</u>	<u>Total</u>
100 <u>Personnel Services – Salaries</u>				
100 Personnel Services – Salaries		58,740.50		58,740.50
Total Personnel Services – Salaries		\$58,740.50		\$58,740.50
200 <u>Personnel Services – Employee Benefits</u>				
210 Group Insurance – Contracted Provider		201.84		201.84
220 Social Security Contributions		4,446.08		4,446.08
230 PSERS Retirement Contributions		20,297.35		20,297.35
250 Unemployment Compensation		64.81		64.81
260 Workers' Compensation		332.78		332.78
270 Group Insurance – Self-Insurance		18,040.00		18,040.00
Total Personnel Services – Employee Benefits		\$43,382.86		\$43,382.86
300 <u>Purchased Professional and Technical Services</u>				
323 Professional Educational Services – Other Educational Agencies			26,530.00	26,530.00
Total Purchased Professional and Technical Services			\$26,530.00	\$26,530.00
500 <u>Other Purchased Services</u>				
580 Travel			1,198.10	1,198.10
Total Other Purchased Services			\$1,198.10	\$1,198.10
600 <u>Supplies</u>				
610 General Supplies			20,956.88	20,956.88
640 Books and Periodicals			10,044.50	10,044.50
650 Supplies & Fees – Technology Related			17,955.00	17,955.00
Total Supplies			\$48,956.38	\$48,956.38
Total 1490 Additional Other Instructional Programs		\$102,123.36	\$76,684.48	\$178,807.84

LEA : 105204703 Penncrest SD

Printed 11/24/2021 11:42:23 AM

General Fund (10)					
1500 Nonpublic School Programs		Elementary	Secondary	Federal	Total
300 <u>Purchased Professional and Technical Services</u>					
323 Professional Educational Services – Other Educational Agencies				309,755.76	309,755.76
Total Purchased Professional and Technical Services				\$309,755.76	\$309,755.76
500 <u>Other Purchased Services</u>					
530 Communications				2,363.84	2,363.84
Total Other Purchased Services				\$2,363.84	\$2,363.84
600 <u>Supplies</u>					
610 General Supplies				7,607.59	7,607.59
640 Books and Periodicals				3,636.80	3,636.80
650 Supplies & Fees – Technology Related				152.40	152.40
Total Supplies				\$11,396.79	\$11,396.79
Total 1500 Nonpublic School Programs				\$323,516.39	\$323,516.39

LEA : 105204703 Penncrest SD

Printed 11/24/2021 11:42:36 AM

General Fund (10)

2000 Support Services

Total

100	<u>Personnel Services – Salaries</u>	
100	Personnel Services – Salaries	5,410,779.48
Total Personnel Services – Salaries		\$5,410,779.48
200	<u>Personnel Services – Employee Benefits</u>	
210	Group Insurance – Contracted Provider	17,529.66
220	Social Security Contributions	410,250.67
230	PSERS Retirement Contributions	1,813,207.80
240	Tuition Reimbursement	99,148.98
250	Unemployment Compensation	5,867.59
260	Workers' Compensation	30,814.72
270	Group Insurance – Self-Insurance	1,784,092.30
299	All Other Employee Benefits	3,500.00
Total Personnel Services – Employee Benefits		\$4,164,411.72
300	<u>Purchased Professional and Technical Services</u>	
323	Professional Educational Services – Other Educational Agencies	17,307.10
330	Other Professional Services	128,166.58
340	Technical Services	53,324.33
390	Other Purchased Professional and Technical Services	39,971.36
Total Purchased Professional and Technical Services		\$238,769.37
400	<u>Purchased Property Services</u>	
410	Cleaning Services	78,099.00
420	Utility Services	329,069.47
430	Repairs and Maintenance Services	126,224.42
440	Rentals	26,813.72
Total Purchased Property Services		\$560,206.61
500	<u>Other Purchased Services</u>	
513	Contracted Carriers	3,273,205.00
516	Student Transportation Services From the IU	54,352.33
520	Insurance – General	34,080.93
523	General Property and Liability Insurance	89,490.00
530	Communications	63,016.01
549	Other Advertising/Public Relations	11,390.35
580	Travel	6,458.83
591	Services Purchased Locally	1,169.00
595	IU Payments By Withholding	64,568.88
599	Other Miscellaneous Purchased Services	34,885.89
Total Other Purchased Services		\$3,632,617.22
600	<u>Supplies</u>	
610	General Supplies	405,111.64
620	Energy	389,896.21
640	Books and Periodicals	194,647.94
650	Supplies & Fees – Technology Related	249.47
Total Supplies		\$989,905.26

LEA : 105204703 Penncrest SD

Printed 11/24/2021 11:42:36 AM

General Fund (10)

2000 Support Services

Total

700 Property

752 Capital Equipment – Original and Additional 227,853.65

756 Capitalized Technology Equipment – Original 481,183.22

Total Property \$709,036.87

800 Other Objects

810 Dues and Fees 11,419.30

Total Other Objects \$11,419.30

Total 2000 Support Services \$15,717,145.83

LEA : 105204703 Penncrest SD

Printed 11/24/2021 11:42:36 AM

General Fund (10)

2100 Support Services – Students	Elementary	Secondary	Federal	Total
100 <u>Personnel Services – Salaries</u>				
100 Personnel Services – Salaries	341,310.47	361,751.05		749,879.52
Total Personnel Services – Salaries	\$341,310.47	\$361,751.05		\$749,879.52
200 <u>Personnel Services – Employee Benefits</u>				
210 Group Insurance – Contracted Provider	831.28	1,251.34		2,284.46
220 Social Security Contributions	25,872.66	27,114.22		56,522.63
230 PSERS Retirement Contributions	117,939.52	124,778.04		258,895.41
250 Unemployment Compensation	377.25	400.76		829.81
260 Workers' Compensation	1,932.11	2,048.27		4,245.26
270 Group Insurance – Self-Insurance	81,179.50	129,968.38		229,187.88
Total Personnel Services – Employee Benefits	\$228,132.32	\$285,561.01		\$551,965.45
300 <u>Purchased Professional and Technical Services</u>				
323 Professional Educational Services – Other Educational Agencies			3,073.57	3,073.57
Total Purchased Professional and Technical Services			\$3,073.57	\$3,073.57
600 <u>Supplies</u>				
610 General Supplies		767.06		767.06
Total Supplies		\$767.06		\$767.06
Total 2100 Support Services – Students	\$569,442.79	\$648,079.12	\$3,073.57	\$1,305,685.60

LEA : 105204703 Penncrest SD

Printed 11/24/2021 11:42:36 AM

General Fund (10)

2120 Guidance Services	Elementary	Secondary	Federal	Total
100 Personnel Services – Salaries				
100 Personnel Services – Salaries	228,898.52	249,339.10		478,237.62
Total Personnel Services – Salaries	\$228,898.52	\$249,339.10		\$478,237.62
200 Personnel Services – Employee Benefits				
210 Group Insurance – Contracted Provider	529.02	949.08		1,478.10
220 Social Security Contributions	17,338.31	18,579.88		35,918.19
230 PSERS Retirement Contributions	79,095.76	85,934.29		165,030.05
250 Unemployment Compensation	252.79	276.31		529.10
260 Workers' Compensation	1,295.68	1,411.84		2,707.52
270 Group Insurance – Self-Insurance	54,120.00	102,908.88		157,028.88
Total Personnel Services – Employee Benefits	\$152,631.56	\$210,060.28		\$362,691.84
600 Supplies				
610 General Supplies		767.06		767.06
Total Supplies		\$767.06		\$767.06
Total 2120 Guidance Services	\$381,530.08	\$460,166.44		\$841,696.52

LEA : 105204703 Penncrest SD

Printed 11/24/2021 11:42:36 AM

General Fund (10)				
2140 Psychological Services				
	<u>Elementary</u>	<u>Secondary</u>	<u>Federal</u>	<u>Total</u>
100 <u>Personnel Services – Salaries</u>				
100 Personnel Services – Salaries	112,411.95	112,411.95		224,823.90
Total Personnel Services – Salaries	\$112,411.95	\$112,411.95		\$224,823.90
200 <u>Personnel Services – Employee Benefits</u>				
210 Group Insurance – Contracted Provider	302.26	302.26		604.52
220 Social Security Contributions	8,534.35	8,534.34		17,068.69
230 PSERS Retirement Contributions	38,843.76	38,843.75		77,687.51
250 Unemployment Compensation	124.46	124.45		248.91
260 Workers' Compensation	636.43	636.43		1,272.86
270 Group Insurance – Self-Insurance	27,059.50	27,059.50		54,119.00
Total Personnel Services – Employee Benefits	\$75,500.76	\$75,500.73		\$151,001.49
300 <u>Purchased Professional and Technical Services</u>				
323 Professional Educational Services – Other Educational Agencies			3,073.57	3,073.57
Total Purchased Professional and Technical Services			\$3,073.57	\$3,073.57
Total 2140 Psychological Services	\$187,912.71	\$187,912.68	\$3,073.57	\$378,898.96

LEA : 105204703 Penncrest SD

Printed 11/24/2021 11:42:36 AM

General Fund (10)

2170 Student Accounting Services	<u>Elementary</u>	<u>Secondary</u>	<u>Federal</u>	<u>Total</u>
100 <u>Personnel Services – Salaries</u>				
100 Personnel Services – Salaries				46,818.00
Total Personnel Services – Salaries				\$46,818.00
200 <u>Personnel Services – Employee Benefits</u>				
210 Group Insurance – Contracted Provider				201.84
220 Social Security Contributions				3,535.75
230 PSERS Retirement Contributions				16,177.85
250 Unemployment Compensation				51.80
260 Workers' Compensation				264.88
270 Group Insurance – Self-Insurance				18,040.00
Total Personnel Services – Employee Benefits				\$38,272.12
Total 2170 Student Accounting Services				\$85,090.12

LEA : 105204703 Penncrest SD

Printed 11/24/2021 11:42:36 AM

General Fund (10)

2200 Support Services – Instructional Staff

	Elementary	Secondary	Federal	Total
100 Personnel Services – Salaries				
100 Personnel Services – Salaries	284,132.67	261,387.25	49,971.92	595,491.84
Total Personnel Services – Salaries	\$284,132.67	\$261,387.25	\$49,971.92	\$595,491.84
200 Personnel Services – Employee Benefits				
210 Group Insurance – Contracted Provider	979.57	914.19	70.76	1,964.52
220 Social Security Contributions	21,552.79	19,826.95	3,785.49	45,165.23
230 PSERS Retirement Contributions	103,500.65	92,101.38	7,834.58	203,436.61
240 Tuition Reimbursement	35,550.00	63,598.98		99,148.98
250 Unemployment Compensation	315.37	289.40	55.78	660.55
260 Workers' Compensation	1,610.11	1,479.98	283.88	3,373.97
270 Group Insurance – Self-Insurance	85,689.00	79,825.05	9,020.00	174,534.05
299 All Other Employee Benefits	1,750.00	1,750.00		3,500.00
Total Personnel Services – Employee Benefits	\$250,947.49	\$259,785.93	\$21,050.49	\$531,783.91
300 Purchased Professional and Technical Services				
323 Professional Educational Services – Other Educational Agencies			11,750.53	11,750.53
340 Technical Services	25,974.52	25,974.52		51,949.04
390 Other Purchased Professional and Technical Services	11,212.75	11,212.75		22,425.50
Total Purchased Professional and Technical Services	\$37,187.27	\$37,187.27	\$11,750.53	\$86,125.07
400 Purchased Property Services				
430 Repairs and Maintenance Services	10,527.85	10,527.85		21,055.70
Total Purchased Property Services	\$10,527.85	\$10,527.85		\$21,055.70
500 Other Purchased Services				
520 Insurance – General	5,019.97	5,019.96		10,039.93
530 Communications	20,087.43	20,087.42		40,174.85
580 Travel	516.73	516.73	245.00	1,278.46
Total Other Purchased Services	\$25,624.13	\$25,624.11	\$245.00	\$51,493.24
600 Supplies				
610 General Supplies	3,956.49	6,947.60	16,206.58	27,110.67
640 Books and Periodicals	99,655.90	94,674.19		194,330.09
Total Supplies	\$103,612.39	\$101,621.79	\$16,206.58	\$221,440.76
700 Property				
756 Capitalized Technology Equipment – Original	142,104.11	142,104.11	196,975.00	481,183.22
Total Property	\$142,104.11	\$142,104.11	\$196,975.00	\$481,183.22
Total 2200 Support Services – Instructional Staff	\$854,135.91	\$838,238.31	\$296,199.52	\$1,988,573.74

LEA : 105204703 Penncrest SD

Printed 11/24/2021 11:42:36 AM

General Fund (10)

2240 Computer-Assisted Instruction Support Services	Elementary	Secondary	Federal	Total
100 Personnel Services – Salaries				
100 Personnel Services – Salaries	113,232.66	113,232.66		226,465.32
Total Personnel Services – Salaries	\$113,232.66	\$113,232.66		\$226,465.32
200 Personnel Services – Employee Benefits				
210 Group Insurance – Contracted Provider	441.65	441.64		883.29
220 Social Security Contributions	8,581.52	8,581.52		17,163.04
230 PSERS Retirement Contributions	37,959.27	37,959.27		75,918.54
250 Unemployment Compensation	125.21	125.20		250.41
260 Workers' Compensation	641.23	641.22		1,282.45
270 Group Insurance – Self-Insurance	35,327.75	35,327.75		70,655.50
Total Personnel Services – Employee Benefits	\$83,076.63	\$83,076.60		\$166,153.23
300 Purchased Professional and Technical Services				
340 Technical Services	25,974.52	25,974.52		51,949.04
390 Other Purchased Professional and Technical Services	11,212.75	11,212.75		22,425.50
Total Purchased Professional and Technical Services	\$37,187.27	\$37,187.27		\$74,374.54
400 Purchased Property Services				
430 Repairs and Maintenance Services	10,527.85	10,527.85		21,055.70
Total Purchased Property Services	\$10,527.85	\$10,527.85		\$21,055.70
500 Other Purchased Services				
520 Insurance – General	5,019.97	5,019.96		10,039.93
530 Communications	20,087.43	20,087.42		40,174.85
580 Travel	440.52	440.52		881.04
Total Other Purchased Services	\$25,547.92	\$25,547.90		\$51,095.82
600 Supplies				
610 General Supplies	3,956.49	3,956.48	10,245.62	18,158.59
640 Books and Periodicals	94,204.07	94,204.06		188,408.13
Total Supplies	\$98,160.56	\$98,160.54	\$10,245.62	\$206,566.72
700 Property				
756 Capitalized Technology Equipment – Original	142,104.11	142,104.11	196,975.00	481,183.22
Total Property	\$142,104.11	\$142,104.11	\$196,975.00	\$481,183.22
Total 2240 Computer-Assisted Instruction Support Services	\$509,837.00	\$509,836.93	\$207,220.62	\$1,226,894.55

LEA : 105204703 Penncrest SD

Printed 11/24/2021 11:42:36 AM

General Fund (10)

2250 School Library Services	Elementary	Secondary	Federal	Total
100 Personnel Services – Salaries				
100 Personnel Services – Salaries	68,236.07	45,490.65		113,726.72
Total Personnel Services – Salaries	\$68,236.07	\$45,490.65		\$113,726.72
200 Personnel Services – Employee Benefits				
210 Group Insurance – Contracted Provider	197.16	131.79		328.95
220 Social Security Contributions	5,175.12	3,449.28		8,624.40
230 PSERS Retirement Contributions	23,579.19	15,718.79		39,297.98
250 Unemployment Compensation	76.46	50.50		126.96
260 Workers' Compensation	387.31	257.20		644.51
270 Group Insurance – Self-Insurance	17,588.85	11,724.90		29,313.75
Total Personnel Services – Employee Benefits	\$47,004.09	\$31,332.46		\$78,336.55
600 Supplies				
640 Books and Periodicals	5,451.83	470.13		5,921.96
Total Supplies	\$5,451.83	\$470.13		\$5,921.96
Total 2250 School Library Services	\$120,691.99	\$77,293.24		\$197,985.23

LEA : 105204703 Penncrest SD

Printed 11/24/2021 11:42:36 AM

General Fund (10)

2260 Instruction and Curriculum Development Services	<u>Elementary</u>	<u>Secondary</u>	<u>Federal</u>	<u>Total</u>
100 <u>Personnel Services – Salaries</u>				
100 Personnel Services – Salaries	102,663.94	102,663.94	18,618.60	223,946.48
Total Personnel Services – Salaries	\$102,663.94	\$102,663.94	\$18,618.60	\$223,946.48
200 <u>Personnel Services – Employee Benefits</u>				
210 Group Insurance – Contracted Provider	327.50	327.50	70.76	725.76
220 Social Security Contributions	7,796.15	7,796.15	1,409.03	17,001.33
230 PSERS Retirement Contributions	39,014.77	35,475.90	2,895.25	77,385.92
250 Unemployment Compensation	113.70	113.70	20.47	247.87
260 Workers' Compensation	581.57	581.56	105.96	1,269.09
270 Group Insurance – Self-Insurance	31,569.50	31,569.50	9,020.00	72,159.00
299 All Other Employee Benefits	1,750.00	1,750.00		3,500.00
Total Personnel Services – Employee Benefits	\$81,153.19	\$77,614.31	\$13,521.47	\$172,288.97
500 <u>Other Purchased Services</u>				
580 Travel	76.21	76.21	245.00	397.42
Total Other Purchased Services	\$76.21	\$76.21	\$245.00	\$397.42
600 <u>Supplies</u>				
610 General Supplies		2,991.12	2,034.36	5,025.48
Total Supplies		\$2,991.12	\$2,034.36	\$5,025.48
Total 2260 Instruction and Curriculum Development Services	\$183,893.34	\$183,345.58	\$34,419.43	\$401,658.35

LEA : 105204703 Penncrest SD

Printed 11/24/2021 11:42:36 AM

General Fund (10)

2270 Instructional Staff Professional Development Services	Elementary	Secondary	Federal	Total
100 <u>Personnel Services – Salaries</u>				
100 Personnel Services – Salaries			31,353.32	31,353.32
Total Personnel Services – Salaries			\$31,353.32	\$31,353.32
200 <u>Personnel Services – Employee Benefits</u>				
210 Group Insurance – Contracted Provider	13.26	13.26		26.52
220 Social Security Contributions			2,376.46	2,376.46
230 PSERS Retirement Contributions	2,947.42	2,947.42	4,939.33	10,834.17
240 Tuition Reimbursement	35,550.00	63,598.98		99,148.98
250 Unemployment Compensation			35.31	35.31
260 Workers' Compensation			177.92	177.92
270 Group Insurance – Self-Insurance	1,202.90	1,202.90		2,405.80
Total Personnel Services – Employee Benefits	\$39,713.58	\$67,762.56	\$7,529.02	\$115,005.16
300 <u>Purchased Professional and Technical Services</u>				
323 Professional Educational Services – Other Educational Agencies			11,750.53	11,750.53
Total Purchased Professional and Technical Services			\$11,750.53	\$11,750.53
600 <u>Supplies</u>				
610 General Supplies			3,926.60	3,926.60
Total Supplies			\$3,926.60	\$3,926.60
Total 2270 Instructional Staff Professional Development Services	\$39,713.58	\$67,762.56	\$54,559.47	\$162,035.61

LEA : 105204703 Penncrest SD

Printed 11/24/2021 11:42:36 AM

General Fund (10)

2300 Support Services – Administration	Elementary	Secondary	Federal	Total
100 Personnel Services – Salaries				
100 Personnel Services – Salaries	419,757.29	753,649.79		1,636,323.13
Total Personnel Services – Salaries	\$419,757.29	\$753,649.79		\$1,636,323.13
200 Personnel Services – Employee Benefits				
210 Group Insurance – Contracted Provider	1,326.26	2,292.09		4,698.23
220 Social Security Contributions	31,966.76	56,734.39		124,037.78
230 PSERS Retirement Contributions	144,326.72	272,173.71		526,395.21
250 Unemployment Compensation	465.09	834.53		1,651.34
260 Workers' Compensation	2,377.33	4,268.00		9,263.58
270 Group Insurance – Self-Insurance	71,347.28	157,847.50		325,287.57
Total Personnel Services – Employee Benefits	\$251,809.44	\$494,150.22		\$991,333.71
300 Purchased Professional and Technical Services				
330 Other Professional Services				71,075.74
340 Technical Services				1,375.29
390 Other Purchased Professional and Technical Services				15,916.25
Total Purchased Professional and Technical Services				\$88,367.28
500 Other Purchased Services				
520 Insurance – General				23,053.00
530 Communications	5,644.72	7,403.74		21,371.55
549 Other Advertising/Public Relations				11,390.35
580 Travel	146.47	786.72		2,760.70
599 Other Miscellaneous Purchased Services				34,832.61
Total Other Purchased Services	\$5,791.19	\$8,190.46		\$93,408.21
600 Supplies				
610 General Supplies	5,560.17	2,380.71		31,157.47
640 Books and Periodicals				317.85
Total Supplies	\$5,560.17	\$2,380.71		\$31,475.32
800 Other Objects				
810 Dues and Fees	595.00	1,575.00		4,079.51
Total Other Objects	\$595.00	\$1,575.00		\$4,079.51
Total 2300 Support Services – Administration	\$683,513.09	\$1,259,946.18		\$2,844,987.16

LEA : 105204703 Penncrest SD

Printed 11/24/2021 11:42:36 AM

General Fund (10)

2310 Board Services

	<u>Elementary</u>	<u>Secondary</u>	<u>Federal</u>	<u>Total</u>
100 <u>Personnel Services – Salaries</u>				
100 Personnel Services – Salaries				4,000.00
Total Personnel Services – Salaries				\$4,000.00
200 <u>Personnel Services – Employee Benefits</u>				
220 Social Security Contributions				302.33
230 PSERS Retirement Contributions				1,382.31
250 Unemployment Compensation				3.90
260 Workers' Compensation				22.51
Total Personnel Services – Employee Benefits				\$1,711.05
300 <u>Purchased Professional and Technical Services</u>				
390 Other Purchased Professional and Technical Services				15,916.25
Total Purchased Professional and Technical Services				\$15,916.25
500 <u>Other Purchased Services</u>				
520 Insurance – General				23,053.00
549 Other Advertising/Public Relations				11,390.35
Total Other Purchased Services				\$34,443.35
600 <u>Supplies</u>				
610 General Supplies				1,028.93
Total Supplies				\$1,028.93
Total 2310 Board Services				\$57,099.58

LEA : 105204703 Penncrest SD

Printed 11/24/2021 11:42:36 AM

General Fund (10)				
2330 Tax Assessment and Collection Services	<u>Elementary</u>	<u>Secondary</u>	<u>Federal</u>	<u>Total</u>
100 <u>Personnel Services – Salaries</u>				
100 Personnel Services – Salaries				144,890.23
Total Personnel Services – Salaries				\$144,890.23
200 <u>Personnel Services – Employee Benefits</u>				
220 Social Security Contributions				11,097.19
260 Workers’ Compensation				817.27
Total Personnel Services – Employee Benefits				\$11,914.46
300 <u>Purchased Professional and Technical Services</u>				
330 Other Professional Services				2,400.00
340 Technical Services				1,375.29
Total Purchased Professional and Technical Services				\$3,775.29
500 <u>Other Purchased Services</u>				
530 Communications				8,323.09
599 Other Miscellaneous Purchased Services				34,795.65
Total Other Purchased Services				\$43,118.74
600 <u>Supplies</u>				
610 General Supplies				15,232.04
Total Supplies				\$15,232.04
Total 2330 Tax Assessment and Collection Services				\$218,930.76

LEA : 105204703 Penncrest SD

Printed 11/24/2021 11:42:36 AM

General Fund (10)

2350 Legal and Accounting Services	<u>Elementary</u>	<u>Secondary</u>	<u>Federal</u>	<u>Total</u>
300 <u>Purchased Professional and Technical Services</u>				
330 Other Professional Services				50,775.74
Total Purchased Professional and Technical Services				\$50,775.74
Total 2350 Legal and Accounting Services				\$50,775.74

LEA : 105204703 Penncrest SD

Printed 11/24/2021 11:42:36 AM

General Fund (10)

2360 Office of the Superintendent / Executive Director Services	<u>Elementary</u>	<u>Secondary</u>	<u>Federal</u>	<u>Total</u>
100 <u>Personnel Services – Salaries</u>				
100 Personnel Services – Salaries				314,025.82
Total Personnel Services – Salaries				\$314,025.82
200 <u>Personnel Services – Employee Benefits</u>				
210 Group Insurance – Contracted Provider				1,079.88
220 Social Security Contributions				23,937.11
230 PSERS Retirement Contributions				108,512.47
250 Unemployment Compensation				347.82
260 Workers' Compensation				1,778.47
270 Group Insurance – Self-Insurance				96,092.79
Total Personnel Services – Employee Benefits				\$231,748.54
500 <u>Other Purchased Services</u>				
530 Communications	4,158.85	4,158.84		8,317.69
580 Travel				1,827.51
599 Other Miscellaneous Purchased Services				36.96
Total Other Purchased Services	\$4,158.85	\$4,158.84		\$10,182.16
600 <u>Supplies</u>				
610 General Supplies				6,955.62
640 Books and Periodicals				317.85
Total Supplies				\$7,273.47
800 <u>Other Objects</u>				
810 Dues and Fees				1,700.00
Total Other Objects				\$1,700.00
Total 2360 Office of the Superintendent / Executive Director Services	\$4,158.85	\$4,158.84		\$564,929.99

LEA : 105204703 Penncrest SD

Printed 11/24/2021 11:42:36 AM

General Fund (10)

2380 Office of the Principal Services	Elementary	Secondary	Federal	Total
100 Personnel Services – Salaries				
100 Personnel Services – Salaries	419,757.29	753,649.79		1,173,407.08
Total Personnel Services – Salaries	\$419,757.29	\$753,649.79		\$1,173,407.08
200 Personnel Services – Employee Benefits				
210 Group Insurance – Contracted Provider	1,326.26	2,292.09		3,618.35
220 Social Security Contributions	31,966.76	56,734.39		88,701.15
230 PSERS Retirement Contributions	144,326.72	272,173.71		416,500.43
250 Unemployment Compensation	465.09	834.53		1,299.62
260 Workers' Compensation	2,377.33	4,268.00		6,645.33
270 Group Insurance – Self-Insurance	71,347.28	157,847.50		229,194.78
Total Personnel Services – Employee Benefits	\$251,809.44	\$494,150.22		\$745,959.66
500 Other Purchased Services				
530 Communications	1,485.87	3,244.90		4,730.77
580 Travel	146.47	786.72		933.19
Total Other Purchased Services	\$1,632.34	\$4,031.62		\$5,663.96
600 Supplies				
610 General Supplies	5,560.17	2,380.71		7,940.88
Total Supplies	\$5,560.17	\$2,380.71		\$7,940.88
800 Other Objects				
810 Dues and Fees	595.00	1,575.00		2,170.00
Total Other Objects	\$595.00	\$1,575.00		\$2,170.00
Total 2380 Office of the Principal Services	\$679,354.24	\$1,255,787.34		\$1,935,141.58

LEA : 105204703 Penncrest SD

Printed 11/24/2021 11:42:36 AM

General Fund (10)

2390 Other Administration Services	<u>Elementary</u>	<u>Secondary</u>	<u>Federal</u>	<u>Total</u>
300 <u>Purchased Professional and Technical Services</u>				
330 Other Professional Services				17,900.00
Total Purchased Professional and Technical Services				\$17,900.00
800 <u>Other Objects</u>				
810 Dues and Fees				209.51
Total Other Objects				\$209.51
Total 2390 Other Administration Services				\$18,109.51

LEA : 105204703 Penncrest SD

Printed 11/24/2021 11:42:36 AM

General Fund (10)

2400 Support Services – Pupil Health	<u>Elementary</u>	<u>Secondary</u>	<u>Federal</u>	<u>Total</u>
100 <u>Personnel Services – Salaries</u>				
100 Personnel Services – Salaries				374,041.37
Total Personnel Services – Salaries				\$374,041.37
200 <u>Personnel Services – Employee Benefits</u>				
210 Group Insurance – Contracted Provider				1,412.95
220 Social Security Contributions				28,403.45
230 PSERS Retirement Contributions				127,484.49
250 Unemployment Compensation				416.70
260 Workers' Compensation				2,127.35
270 Group Insurance – Self-Insurance				157,523.50
Total Personnel Services – Employee Benefits				\$317,368.44
300 <u>Purchased Professional and Technical Services</u>				
330 Other Professional Services				10,500.00
Total Purchased Professional and Technical Services				\$10,500.00
500 <u>Other Purchased Services</u>				
580 Travel				45.43
Total Other Purchased Services				\$45.43
600 <u>Supplies</u>				
610 General Supplies				7,944.63
Total Supplies				\$7,944.63
700 <u>Property</u>				
752 Capital Equipment – Original and Additional				2,649.41
Total Property				\$2,649.41
Total 2400 Support Services – Pupil Health				\$712,549.28

LEA : 105204703 Penncrest SD

Printed 11/24/2021 11:42:36 AM

General Fund (10)				
2430 Dental Services	<u>Elementary</u>	<u>Secondary</u>	<u>Federal</u>	<u>Total</u>
600 <u>Supplies</u>				
610 General Supplies				360.00
Total Supplies				\$360.00
Total 2430 Dental Services				\$360.00

LEA : 105204703 Penncrest SD

Printed 11/24/2021 11:42:36 AM

General Fund (10)				
2440 Nursing Services	<u>Elementary</u>	<u>Secondary</u>	<u>Federal</u>	<u>Total</u>
100 <u>Personnel Services – Salaries</u>				
100 Personnel Services – Salaries				374,041.37
Total Personnel Services – Salaries				\$374,041.37
200 <u>Personnel Services – Employee Benefits</u>				
210 Group Insurance – Contracted Provider				1,412.95
220 Social Security Contributions				28,403.45
230 PSERS Retirement Contributions				127,484.49
250 Unemployment Compensation				416.70
260 Workers' Compensation				2,127.35
270 Group Insurance – Self-Insurance				157,523.50
Total Personnel Services – Employee Benefits				\$317,368.44
300 <u>Purchased Professional and Technical Services</u>				
330 Other Professional Services				10,500.00
Total Purchased Professional and Technical Services				\$10,500.00
500 <u>Other Purchased Services</u>				
580 Travel				45.43
Total Other Purchased Services				\$45.43
600 <u>Supplies</u>				
610 General Supplies				7,584.63
Total Supplies				\$7,584.63
700 <u>Property</u>				
752 Capital Equipment – Original and Additional				2,649.41
Total Property				\$2,649.41
Total 2440 Nursing Services				\$712,189.28

LEA : 105204703 Penncrest SD

Printed 11/24/2021 11:42:36 AM

General Fund (10)

2500 Support Services – Business	Elementary	Secondary	Federal	Total
100 <u>Personnel Services – Salaries</u>				
100 Personnel Services – Salaries				351,469.63
Total Personnel Services – Salaries				\$351,469.63
200 <u>Personnel Services – Employee Benefits</u>				
210 Group Insurance – Contracted Provider				1,378.05
220 Social Security Contributions				26,647.25
230 PSERS Retirement Contributions				121,450.26
250 Unemployment Compensation				388.53
260 Workers' Compensation				1,990.37
270 Group Insurance – Self-Insurance				112,748.50
Total Personnel Services – Employee Benefits				\$264,602.96
300 <u>Purchased Professional and Technical Services</u>				
323 Professional Educational Services – Other Educational Agencies				2,483.00
330 Other Professional Services				35,464.21
Total Purchased Professional and Technical Services				\$37,947.21
400 <u>Purchased Property Services</u>				
430 Repairs and Maintenance Services				10,625.12
440 Rentals				4,064.37
Total Purchased Property Services				\$14,689.49
500 <u>Other Purchased Services</u>				
520 Insurance – General				988.00
530 Communications				(1,566.55)
580 Travel				67.93
591 Services Purchased Locally				1,169.00
Total Other Purchased Services				\$658.38
600 <u>Supplies</u>				
610 General Supplies				5,462.87
Total Supplies				\$5,462.87
800 <u>Other Objects</u>				
810 Dues and Fees				521.74
Total Other Objects				\$521.74
Total 2500 Support Services – Business				\$675,352.28

LEA : 105204703 Penncrest SD

Printed 11/24/2021 11:42:36 AM

General Fund (10)				
2510 Fiscal Services	<u>Elementary</u>	<u>Secondary</u>	<u>Federal</u>	<u>Total</u>
100 <u>Personnel Services – Salaries</u>				
100 Personnel Services – Salaries				321,676.23
Total Personnel Services – Salaries				\$321,676.23
200 <u>Personnel Services – Employee Benefits</u>				
210 Group Insurance – Contracted Provider				1,237.41
220 Social Security Contributions				24,408.92
230 PSERS Retirement Contributions				111,155.56
250 Unemployment Compensation				355.64
260 Workers' Compensation				1,821.81
270 Group Insurance – Self-Insurance				94,708.50
Total Personnel Services – Employee Benefits				\$233,687.84
300 <u>Purchased Professional and Technical Services</u>				
323 Professional Educational Services – Other Educational Agencies				2,483.00
330 Other Professional Services				35,464.21
Total Purchased Professional and Technical Services				\$37,947.21
400 <u>Purchased Property Services</u>				
430 Repairs and Maintenance Services				10,625.12
440 Rentals				3,914.42
Total Purchased Property Services				\$14,539.54
500 <u>Other Purchased Services</u>				
520 Insurance – General				988.00
580 Travel				67.93
591 Services Purchased Locally				1,169.00
Total Other Purchased Services				\$2,224.93
600 <u>Supplies</u>				
610 General Supplies				5,167.92
Total Supplies				\$5,167.92
800 <u>Other Objects</u>				
810 Dues and Fees				521.74
Total Other Objects				\$521.74
Total 2510 Fiscal Services				\$615,765.41

LEA : 105204703 Penncrest SD

Printed 11/24/2021 11:42:36 AM

General Fund (10)

2511 Supervision of Fiscal Services - Head of Component	Elementary	Secondary	Federal	Total
100 <u>Personnel Services – Salaries</u>				
100 Personnel Services – Salaries				232,852.17
Total Personnel Services – Salaries				\$232,852.17
200 <u>Personnel Services – Employee Benefits</u>				
210 Group Insurance – Contracted Provider				884.73
220 Social Security Contributions				17,682.18
230 PSERS Retirement Contributions				80,462.26
250 Unemployment Compensation				257.84
260 Workers' Compensation				1,318.64
270 Group Insurance – Self-Insurance				58,628.50
Total Personnel Services – Employee Benefits				\$159,234.15
300 <u>Purchased Professional and Technical Services</u>				
330 Other Professional Services				35,464.21
Total Purchased Professional and Technical Services				\$35,464.21
400 <u>Purchased Property Services</u>				
430 Repairs and Maintenance Services				9,995.12
440 Rentals				2,020.86
Total Purchased Property Services				\$12,015.98
500 <u>Other Purchased Services</u>				
520 Insurance – General				988.00
580 Travel				67.93
591 Services Purchased Locally				1,169.00
Total Other Purchased Services				\$2,224.93
600 <u>Supplies</u>				
610 General Supplies				4,809.82
Total Supplies				\$4,809.82
800 <u>Other Objects</u>				
810 Dues and Fees				521.74
Total Other Objects				\$521.74
Total 2511 Supervision of Fiscal Services - Head of Component				\$447,123.00

LEA : 105204703 Penncrest SD

Printed 11/24/2021 11:42:36 AM

General Fund (10)

2513 Receiving and Disbursing Funds Services	<u>Elementary</u>	<u>Secondary</u>	<u>Federal</u>	<u>Total</u>
100 <u>Personnel Services – Salaries</u>				
100 Personnel Services – Salaries				39,405.06
Total Personnel Services – Salaries				\$39,405.06
200 <u>Personnel Services – Employee Benefits</u>				
210 Group Insurance – Contracted Provider				150.84
220 Social Security Contributions				2,981.99
230 PSERS Retirement Contributions				13,616.69
250 Unemployment Compensation				43.40
260 Workers' Compensation				223.13
270 Group Insurance – Self-Insurance				18,040.00
Total Personnel Services – Employee Benefits				\$35,056.05
400 <u>Purchased Property Services</u>				
430 Repairs and Maintenance Services				630.00
440 Rentals				946.76
Total Purchased Property Services				\$1,576.76
600 <u>Supplies</u>				
610 General Supplies				228.10
Total Supplies				\$228.10
Total 2513 Receiving and Disbursing Funds Services				\$76,265.97

LEA : 105204703 Penncrest SD

Printed 11/24/2021 11:42:36 AM

General Fund (10)

2514 Payroll Services

	<u>Elementary</u>	<u>Secondary</u>	<u>Federal</u>	<u>Total</u>
100 <u>Personnel Services – Salaries</u>				
100 Personnel Services – Salaries				49,419.00
Total Personnel Services – Salaries				\$49,419.00
200 <u>Personnel Services – Employee Benefits</u>				
210 Group Insurance – Contracted Provider				201.84
220 Social Security Contributions				3,744.75
230 PSERS Retirement Contributions				17,076.61
250 Unemployment Compensation				54.40
260 Workers' Compensation				280.04
270 Group Insurance – Self-Insurance				18,040.00
Total Personnel Services – Employee Benefits				\$39,397.64
300 <u>Purchased Professional and Technical Services</u>				
323 Professional Educational Services – Other Educational Agencies				2,483.00
Total Purchased Professional and Technical Services				\$2,483.00
400 <u>Purchased Property Services</u>				
440 Rentals				946.80
Total Purchased Property Services				\$946.80
600 <u>Supplies</u>				
610 General Supplies				130.00
Total Supplies				\$130.00
Total 2514 Payroll Services				\$92,376.44

LEA : 105204703 Penncrest SD

Printed 11/24/2021 11:42:36 AM

General Fund (10)

2530 Warehousing and Distributing Services	<u>Elementary</u>	<u>Secondary</u>	<u>Federal</u>	<u>Total</u>
100 <u>Personnel Services – Salaries</u>				
100 Personnel Services – Salaries				29,793.40
Total Personnel Services – Salaries				\$29,793.40
200 <u>Personnel Services – Employee Benefits</u>				
210 Group Insurance – Contracted Provider				140.64
220 Social Security Contributions				2,238.33
230 PSERS Retirement Contributions				10,294.70
250 Unemployment Compensation				32.89
260 Workers' Compensation				168.56
270 Group Insurance – Self-Insurance				18,040.00
Total Personnel Services – Employee Benefits				\$30,915.12
400 <u>Purchased Property Services</u>				
440 Rentals				149.95
Total Purchased Property Services				\$149.95
500 <u>Other Purchased Services</u>				
530 Communications				(1,566.55)
Total Other Purchased Services				(\$1,566.55)
Total 2530 Warehousing and Distributing Services				\$59,291.92

LEA : 105204703 Penncrest SD

Printed 11/24/2021 11:42:36 AM

General Fund (10)				
2590 Other Support Services – Business	<u>Elementary</u>	<u>Secondary</u>	<u>Federal</u>	<u>Total</u>
600 <u>Supplies</u>				
610 General Supplies				294.95
Total Supplies				\$294.95
Total 2590 Other Support Services – Business				\$294.95

LEA : 105204703 Penncrest SD

Printed 11/24/2021 11:42:36 AM

General Fund (10)				
2600 Operation and Maintenance of Plant Services	<u>Elementary</u>	<u>Secondary</u>	<u>Federal</u>	<u>Total</u>
100 <u>Personnel Services – Salaries</u>				
100 Personnel Services – Salaries				1,539,300.98
Total Personnel Services – Salaries				\$1,539,300.98
200 <u>Personnel Services – Employee Benefits</u>				
210 Group Insurance – Contracted Provider				5,336.89
220 Social Security Contributions				117,626.74
230 PSERS Retirement Contributions				523,366.40
250 Unemployment Compensation				1,721.45
260 Workers' Compensation				8,799.63
270 Group Insurance – Self-Insurance				692,765.74
Total Personnel Services – Employee Benefits				\$1,349,616.85
300 <u>Purchased Professional and Technical Services</u>				
330 Other Professional Services				4,176.63
Total Purchased Professional and Technical Services				\$4,176.63
400 <u>Purchased Property Services</u>				
410 Cleaning Services				75,667.46
420 Utility Services				328,055.01
430 Repairs and Maintenance Services				91,793.25
440 Rentals				22,749.35
Total Purchased Property Services				\$518,265.07
500 <u>Other Purchased Services</u>				
523 General Property and Liability Insurance				89,490.00
530 Communications				3,036.16
580 Travel				2,201.31
Total Other Purchased Services				\$94,727.47
600 <u>Supplies</u>				
610 General Supplies	70,711.04	110,219.04	135,629.39	316,559.47
620 Energy				160,152.65
650 Supplies & Fees – Technology Related			249.47	249.47
Total Supplies	\$70,711.04	\$110,219.04	\$135,878.86	\$476,961.59
700 <u>Property</u>				
752 Capital Equipment – Original and Additional			42,618.49	185,689.41
Total Property			\$42,618.49	\$185,689.41
800 <u>Other Objects</u>				
810 Dues and Fees				5,889.70
Total Other Objects				\$5,889.70
Total 2600 Operation and Maintenance of Plant Services	\$70,711.04	\$110,219.04	\$178,497.35	\$4,174,627.70

LEA : 105204703 Penncrest SD

Printed 11/24/2021 11:42:36 AM

General Fund (10)

2610 Supervision of Operation and Maintenance of Plant Services	<u>Elementary</u>	<u>Secondary</u>	<u>Federal</u>	<u>Total</u>
100 <u>Personnel Services – Salaries</u>				
100 Personnel Services – Salaries				241,109.01
Total Personnel Services – Salaries				\$241,109.01
200 <u>Personnel Services – Employee Benefits</u>				
210 Group Insurance – Contracted Provider				875.05
220 Social Security Contributions				18,238.17
230 PSERS Retirement Contributions				81,092.16
250 Unemployment Compensation				267.32
260 Workers' Compensation				1,364.28
270 Group Insurance – Self-Insurance				122,631.92
Total Personnel Services – Employee Benefits				\$224,468.90
600 <u>Supplies</u>				
610 General Supplies	365.26	365.25		730.51
Total Supplies	\$365.26	\$365.25		\$730.51
700 <u>Property</u>				
752 Capital Equipment – Original and Additional			615.49	615.49
Total Property			\$615.49	\$615.49
800 <u>Other Objects</u>				
810 Dues and Fees				4,442.01
Total Other Objects				\$4,442.01
Total 2610 Supervision of Operation and Maintenance of Plant Services	\$365.26	\$365.25	\$615.49	\$471,365.92

LEA : 105204703 Penncrest SD

Printed 11/24/2021 11:42:36 AM

General Fund (10)

2611 Supervision of Operation and Maintenance of Plant Services – Head of Component	<u>Elementary</u>	<u>Secondary</u>	<u>Federal</u>	<u>Total</u>
100 <u>Personnel Services – Salaries</u>				
100 Personnel Services – Salaries				241,109.01
Total Personnel Services – Salaries				\$241,109.01
200 <u>Personnel Services – Employee Benefits</u>				
210 Group Insurance – Contracted Provider				875.05
220 Social Security Contributions				18,238.17
230 PSERS Retirement Contributions				81,092.16
250 Unemployment Compensation				267.32
260 Workers' Compensation				1,364.28
270 Group Insurance – Self-Insurance				122,631.92
Total Personnel Services – Employee Benefits				\$224,468.90
600 <u>Supplies</u>				
610 General Supplies	365.26	365.25		730.51
Total Supplies	\$365.26	\$365.25		\$730.51
700 <u>Property</u>				
752 Capital Equipment – Original and Additional			615.49	615.49
Total Property			\$615.49	\$615.49
800 <u>Other Objects</u>				
810 Dues and Fees				4,442.01
Total Other Objects				\$4,442.01
Total 2611 Supervision of Operation and Maintenance of Plant Services – Head of Component	\$365.26	\$365.25	\$615.49	\$471,365.92

LEA : 105204703 Penncrest SD

Printed 11/24/2021 11:42:36 AM

General Fund (10)

2620 Operation of Buildings Services	Elementary	Secondary	Federal	Total
100 Personnel Services – Salaries				
100 Personnel Services – Salaries				1,298,191.97
Total Personnel Services – Salaries				\$1,298,191.97
200 Personnel Services – Employee Benefits				
210 Group Insurance – Contracted Provider				4,461.84
220 Social Security Contributions				99,388.57
230 PSERS Retirement Contributions				442,274.24
250 Unemployment Compensation				1,454.13
260 Workers' Compensation				7,435.35
270 Group Insurance – Self-Insurance				570,133.82
Total Personnel Services – Employee Benefits				\$1,125,147.95
300 Purchased Professional and Technical Services				
330 Other Professional Services				4,176.63
Total Purchased Professional and Technical Services				\$4,176.63
400 Purchased Property Services				
410 Cleaning Services				75,667.46
420 Utility Services				328,055.01
430 Repairs and Maintenance Services				91,793.25
440 Rentals				22,749.35
Total Purchased Property Services				\$518,265.07
500 Other Purchased Services				
523 General Property and Liability Insurance				89,490.00
530 Communications				3,036.16
580 Travel				2,201.31
Total Other Purchased Services				\$94,727.47
600 Supplies				
610 General Supplies	65,680.03	105,188.04	135,629.39	306,497.46
620 Energy				160,152.65
650 Supplies & Fees – Technology Related			249.47	249.47
Total Supplies	\$65,680.03	\$105,188.04	\$135,878.86	\$466,899.58
700 Property				
752 Capital Equipment – Original and Additional			42,003.00	185,073.92
Total Property			\$42,003.00	\$185,073.92
800 Other Objects				
810 Dues and Fees				1,447.69
Total Other Objects				\$1,447.69
Total 2620 Operation of Buildings Services	\$65,680.03	\$105,188.04	\$177,881.86	\$3,693,930.28

LEA : 105204703 Penncrest SD

Printed 11/24/2021 11:42:36 AM

General Fund (10)

2660 Safety and Security Services	<u>Elementary</u>	<u>Secondary</u>	<u>Federal</u>	<u>Total</u>
600 <u>Supplies</u>				
610 General Supplies	4,665.75	4,665.75		9,331.50
Total Supplies	\$4,665.75	\$4,665.75		\$9,331.50
Total 2660 Safety and Security Services	\$4,665.75	\$4,665.75		\$9,331.50

LEA : 105204703 Penncrest SD

Printed 11/24/2021 11:42:36 AM

General Fund (10)

2700 Student Transportation Services	Elementary	Secondary	Federal	Total
100 <u>Personnel Services – Salaries</u>				
100 Personnel Services – Salaries				72,096.50
Total Personnel Services – Salaries				\$72,096.50
200 <u>Personnel Services – Employee Benefits</u>				
210 Group Insurance – Contracted Provider				252.72
220 Social Security Contributions				5,447.51
230 PSERS Retirement Contributions				24,912.37
250 Unemployment Compensation				80.02
260 Workers' Compensation				407.80
270 Group Insurance – Self-Insurance				74,005.06
Total Personnel Services – Employee Benefits				\$105,105.48
300 <u>Purchased Professional and Technical Services</u>				
330 Other Professional Services				6,950.00
390 Other Purchased Professional and Technical Services				1,629.61
Total Purchased Professional and Technical Services				\$8,579.61
400 <u>Purchased Property Services</u>				
410 Cleaning Services				2,431.54
420 Utility Services				1,014.46
430 Repairs and Maintenance Services				2,750.35
Total Purchased Property Services				\$6,196.35
500 <u>Other Purchased Services</u>				
513 Contracted Carriers			6,572.26	3,273,205.00
516 Student Transportation Services From the IU				54,352.33
580 Travel				105.00
599 Other Miscellaneous Purchased Services				53.28
Total Other Purchased Services			\$6,572.26	\$3,327,715.61
600 <u>Supplies</u>				
610 General Supplies				14,722.92
620 Energy				229,743.56
Total Supplies				\$244,466.48
700 <u>Property</u>				
752 Capital Equipment – Original and Additional				39,514.83
Total Property				\$39,514.83
800 <u>Other Objects</u>				
810 Dues and Fees				434.00
Total Other Objects				\$434.00
Total 2700 Student Transportation Services			\$6,572.26	\$3,804,108.86

LEA : 105204703 Penncrest SD

Printed 11/24/2021 11:42:36 AM

General Fund (10)

2710 Supervision of Student Transportation Services	<u>Elementary</u>	<u>Secondary</u>	<u>Federal</u>	<u>Total</u>
100 <u>Personnel Services – Salaries</u>				
100 Personnel Services – Salaries				72,096.50
Total Personnel Services – Salaries				\$72,096.50
200 <u>Personnel Services – Employee Benefits</u>				
210 Group Insurance – Contracted Provider				252.72
220 Social Security Contributions				5,447.51
230 PSERS Retirement Contributions				24,912.37
250 Unemployment Compensation				80.02
260 Workers' Compensation				407.80
270 Group Insurance – Self-Insurance				74,005.06
Total Personnel Services – Employee Benefits				\$105,105.48
300 <u>Purchased Professional and Technical Services</u>				
330 Other Professional Services				6,950.00
Total Purchased Professional and Technical Services				\$6,950.00
500 <u>Other Purchased Services</u>				
513 Contracted Carriers			6,572.26	3,000,688.88
516 Student Transportation Services From the IU				54,352.33
580 Travel				105.00
Total Other Purchased Services			\$6,572.26	\$3,055,146.21
600 <u>Supplies</u>				
610 General Supplies				137.98
Total Supplies				\$137.98
800 <u>Other Objects</u>				
810 Dues and Fees				434.00
Total Other Objects				\$434.00
Total 2710 Supervision of Student Transportation Services			\$6,572.26	\$3,239,870.17

LEA : 105204703 Penncrest SD

Printed 11/24/2021 11:42:36 AM

General Fund (10)				
2711 Supervision of Student Transportation Services – Head of Component	<u>Elementary</u>	<u>Secondary</u>	<u>Federal</u>	<u>Total</u>
100 <u>Personnel Services – Salaries</u>				
100 Personnel Services – Salaries				72,096.50
Total Personnel Services – Salaries				\$72,096.50
200 <u>Personnel Services – Employee Benefits</u>				
210 Group Insurance – Contracted Provider				252.72
220 Social Security Contributions				5,447.51
230 PSERS Retirement Contributions				24,912.37
250 Unemployment Compensation				80.02
260 Workers' Compensation				407.80
270 Group Insurance – Self-Insurance				74,005.06
Total Personnel Services – Employee Benefits				\$105,105.48
300 <u>Purchased Professional and Technical Services</u>				
330 Other Professional Services				6,950.00
Total Purchased Professional and Technical Services				\$6,950.00
500 <u>Other Purchased Services</u>				
513 Contracted Carriers			6,572.26	3,000,688.88
516 Student Transportation Services From the IU				54,352.33
580 Travel				105.00
Total Other Purchased Services			\$6,572.26	\$3,055,146.21
600 <u>Supplies</u>				
610 General Supplies				137.98
Total Supplies				\$137.98
800 <u>Other Objects</u>				
810 Dues and Fees				434.00
Total Other Objects				\$434.00
Total 2711 Supervision of Student Transportation Services – Head of Component			\$6,572.26	\$3,239,870.17

LEA : 105204703 Penncrest SD

Printed 11/24/2021 11:42:36 AM

General Fund (10)

2740 Vehicle Servicing and Maintenance Services

Elementary Secondary Federal Total

300 <u>Purchased Professional and Technical Services</u>				
390 Other Purchased Professional and Technical Services				1,629.61
Total Purchased Professional and Technical Services				\$1,629.61
400 <u>Purchased Property Services</u>				
410 Cleaning Services				2,431.54
420 Utility Services				1,014.46
430 Repairs and Maintenance Services				2,750.35
Total Purchased Property Services				\$6,196.35
500 <u>Other Purchased Services</u>				
599 Other Miscellaneous Purchased Services				53.28
Total Other Purchased Services				\$53.28
600 <u>Supplies</u>				
610 General Supplies				14,584.94
620 Energy				229,743.56
Total Supplies				\$244,328.50
700 <u>Property</u>				
752 Capital Equipment – Original and Additional				39,514.83
Total Property				\$39,514.83
Total 2740 Vehicle Servicing and Maintenance Services				\$291,722.57

LEA : 105204703 Penncrest SD

Printed 11/24/2021 11:42:36 AM

General Fund (10)

2750 Nonpublic Transportation	<u>Elementary</u>	<u>Secondary</u>	<u>Federal</u>	<u>Total</u>
500 <u>Other Purchased Services</u>				
513 Contracted Carriers				272,516.12
Total Other Purchased Services				\$272,516.12
Total 2750 Nonpublic Transportation				\$272,516.12

LEA : 105204703 Penncrest SD

Printed 11/24/2021 11:42:36 AM

General Fund (10)				
2800 Support Services – Central	<u>Elementary</u>	<u>Secondary</u>	<u>Federal</u>	<u>Total</u>
100 <u>Personnel Services – Salaries</u>				
100 Personnel Services – Salaries			40,000.99	92,176.51
Total Personnel Services – Salaries			\$40,000.99	\$92,176.51
200 <u>Personnel Services – Employee Benefits</u>				
210 Group Insurance – Contracted Provider				201.84
220 Social Security Contributions			2,443.29	6,400.08
230 PSERS Retirement Contributions			9,237.16	27,267.05
250 Unemployment Compensation			61.03	119.19
260 Workers' Compensation			311.52	606.76
270 Group Insurance – Self-Insurance				18,040.00
Total Personnel Services – Employee Benefits			\$12,053.00	\$52,634.92
600 <u>Supplies</u>				
610 General Supplies				1,386.55
Total Supplies				\$1,386.55
800 <u>Other Objects</u>				
810 Dues and Fees				494.35
Total Other Objects				\$494.35
Total 2800 Support Services – Central			\$52,053.99	\$146,692.33

LEA : 105204703 Penncrest SD

Printed 11/24/2021 11:42:36 AM

General Fund (10)

2830 Staff Services

	<u>Elementary</u>	<u>Secondary</u>	<u>Federal</u>	<u>Total</u>
100 <u>Personnel Services – Salaries</u>				
100 Personnel Services – Salaries			40,000.99	92,176.51
Total Personnel Services – Salaries			\$40,000.99	\$92,176.51
200 <u>Personnel Services – Employee Benefits</u>				
210 Group Insurance – Contracted Provider				201.84
220 Social Security Contributions			2,443.29	6,400.08
230 PSERS Retirement Contributions			9,237.16	27,267.05
250 Unemployment Compensation			61.03	119.19
260 Workers' Compensation			311.52	606.76
270 Group Insurance – Self-Insurance				18,040.00
Total Personnel Services – Employee Benefits			\$12,053.00	\$52,634.92
600 <u>Supplies</u>				
610 General Supplies				1,386.55
Total Supplies				\$1,386.55
800 <u>Other Objects</u>				
810 Dues and Fees				494.35
Total Other Objects				\$494.35
Total 2830 Staff Services			\$52,053.99	\$146,692.33

LEA : 105204703 Penncrest SD

Printed 11/24/2021 11:42:36 AM

General Fund (10)

2831 Supervision of Staff Services

	<u>Elementary</u>	<u>Secondary</u>	<u>Federal</u>	<u>Total</u>
100 <u>Personnel Services – Salaries</u>				
100 Personnel Services – Salaries				52,175.52
Total Personnel Services – Salaries				\$52,175.52
200 <u>Personnel Services – Employee Benefits</u>				
210 Group Insurance – Contracted Provider				201.84
220 Social Security Contributions				3,956.79
230 PSERS Retirement Contributions				18,029.89
250 Unemployment Compensation				58.16
260 Workers' Compensation				295.24
270 Group Insurance – Self-Insurance				18,040.00
Total Personnel Services – Employee Benefits				\$40,581.92
600 <u>Supplies</u>				
610 General Supplies				1,386.55
Total Supplies				\$1,386.55
800 <u>Other Objects</u>				
810 Dues and Fees				494.35
Total Other Objects				\$494.35
Total 2831 Supervision of Staff Services				\$94,638.34

LEA : 105204703 Penncrest SD

Printed 11/24/2021 11:42:36 AM

General Fund (10)

2839 Other Staff Services

	<u>Elementary</u>	<u>Secondary</u>	<u>Federal</u>	<u>Total</u>
100 <u>Personnel Services – Salaries</u>				
100 Personnel Services – Salaries			40,000.99	40,000.99
Total Personnel Services – Salaries			\$40,000.99	\$40,000.99
200 <u>Personnel Services – Employee Benefits</u>				
220 Social Security Contributions			2,443.29	2,443.29
230 PSERS Retirement Contributions			9,237.16	9,237.16
250 Unemployment Compensation			61.03	61.03
260 Workers' Compensation			311.52	311.52
Total Personnel Services – Employee Benefits			\$12,053.00	\$12,053.00
Total 2839 Other Staff Services			\$52,053.99	\$52,053.99

LEA : 105204703 Penncrest SD

Printed 11/24/2021 11:42:36 AM

General Fund (10)				
2900 Other Support Services	<u>Elementary</u>	<u>Secondary</u>	<u>Federal</u>	<u>Total</u>
500 <u>Other Purchased Services</u>				
595 IU Payments By Withholding				64,568.88
Total Other Purchased Services				\$64,568.88
Total 2900 Other Support Services				\$64,568.88

LEA : 105204703 Penncrest SD

Printed 11/24/2021 11:42:36 AM

General Fund (10)

2910 Support Services Not Listed Elsewhere In the 2000 Series

Elementary Secondary Federal Total

500 Other Purchased Services

595 IU Payments By Withholding 64,568.88

Total Other Purchased Services \$64,568.88

Total 2910 Support Services Not Listed Elsewhere In the 2000 Series \$64,568.88

LEA : 105204703 Penncrest SD

Printed 11/24/2021 11:42:49 AM

General Fund (10)

3000 Operation of Non-Instructional Services	Total
100 <u>Personnel Services – Salaries</u>	
100 Personnel Services – Salaries	454,133.53
Total Personnel Services – Salaries	\$454,133.53
200 <u>Personnel Services – Employee Benefits</u>	
210 Group Insurance – Contracted Provider	252.84
220 Social Security Contributions	34,480.14
230 PSERS Retirement Contributions	68,374.74
250 Unemployment Compensation	490.01
260 Workers' Compensation	2,562.18
270 Group Insurance – Self-Insurance	21,636.90
Total Personnel Services – Employee Benefits	\$127,796.81
300 <u>Purchased Professional and Technical Services</u>	
329 Professional Educational Services – Other	1,209.89
330 Other Professional Services	29,985.34
390 Other Purchased Professional and Technical Services	74,877.88
Total Purchased Professional and Technical Services	\$106,073.11
400 <u>Purchased Property Services</u>	
430 Repairs and Maintenance Services	8,939.59
440 Rentals	1,000.00
Total Purchased Property Services	\$9,939.59
500 <u>Other Purchased Services</u>	
510 Student Transportation Services	62,358.59
520 Insurance – General	11,100.00
580 Travel	11,085.91
Total Other Purchased Services	\$84,544.50
600 <u>Supplies</u>	
610 General Supplies	139,122.00
640 Books and Periodicals	8,229.74
Total Supplies	\$147,351.74
700 <u>Property</u>	
762 Capitalized Equipment - Replacement	(250.00)
Total Property	(\$250.00)
800 <u>Other Objects</u>	
810 Dues and Fees	1,293.00
890 Miscellaneous Expenditures	(2,250.00)
Total Other Objects	(\$957.00)
Total 3000 Operation of Non-Instructional Services	\$928,632.28

LEA : 105204703 Penncrest SD

Printed 11/24/2021 11:42:49 AM

General Fund (10)

3200 Student Activities	Elementary	Secondary	Federal	Total
100 <u>Personnel Services – Salaries</u>				
100 Personnel Services – Salaries				454,133.53
Total Personnel Services – Salaries				\$454,133.53
200 <u>Personnel Services – Employee Benefits</u>				
210 Group Insurance – Contracted Provider				252.84
220 Social Security Contributions				34,480.14
230 PSERS Retirement Contributions				68,374.74
250 Unemployment Compensation				490.01
260 Workers' Compensation				2,562.18
270 Group Insurance – Self-Insurance				21,636.90
Total Personnel Services – Employee Benefits				\$127,796.81
300 <u>Purchased Professional and Technical Services</u>				
330 Other Professional Services				29,985.34
390 Other Purchased Professional and Technical Services				74,877.88
Total Purchased Professional and Technical Services				\$104,863.22
400 <u>Purchased Property Services</u>				
430 Repairs and Maintenance Services				8,939.59
440 Rentals				1,000.00
Total Purchased Property Services				\$9,939.59
500 <u>Other Purchased Services</u>				
510 Student Transportation Services				62,358.59
520 Insurance – General				11,100.00
580 Travel				11,085.91
Total Other Purchased Services				\$84,544.50
600 <u>Supplies</u>				
610 General Supplies				138,590.45
Total Supplies				\$138,590.45
700 <u>Property</u>				
762 Capitalized Equipment - Replacement				(250.00)
Total Property				(\$250.00)
800 <u>Other Objects</u>				
810 Dues and Fees				1,293.00
Total Other Objects				\$1,293.00
Total 3200 Student Activities				\$920,911.10

LEA : 105204703 Penncrest SD

Printed 11/24/2021 11:42:49 AM

General Fund (10)

3300 Community Services

Elementary Secondary Federal Total

300 Purchased Professional and Technical Services

329 Professional Educational Services – Other 1,209.89 1,209.89

Total Purchased Professional and Technical Services \$1,209.89 \$1,209.89

600 Supplies

610 General Supplies 531.55 531.55

640 Books and Periodicals 8,229.74 8,229.74

Total Supplies \$8,761.29 \$8,761.29

Total 3300 Community Services \$9,971.18 \$9,971.18

LEA : 105204703 Penncrest SD

Printed 11/24/2021 11:42:49 AM

General Fund (10)				
3400 Scholarships and Awards	<u>Elementary</u>	<u>Secondary</u>	<u>Federal</u>	<u>Total</u>
800 <u>Other Objects</u>				
890 Miscellaneous Expenditures				(2,250.00)
Total Other Objects				(\$2,250.00)
Total 3400 Scholarships and Awards				(\$2,250.00)

LEA : 105204703 Penncrest SD

Printed 11/24/2021 11:43:01 AM

General Fund (10)	
5000 Other Expenditures and Financing Uses	<u>Total</u>
800 <u>Other Objects</u>	
830 Interest	136,485.91
Total Other Objects	\$136,485.91
900 <u>Other Uses of Funds</u>	
910 Redemption of Principal	141,979.64
939 Other Fund Transfers	1,300,000.00
Total Other Uses of Funds	\$1,441,979.64
Total 5000 Other Expenditures and Financing Uses	\$1,578,465.55

LEA : 105204703 Penncrest SD

Printed 11/24/2021 11:43:01 AM

General Fund (10)

5100 Debt Service / Other Expenditures and Financing Uses	<u>Elementary</u>	<u>Secondary</u>	<u>Federal</u>	<u>Total</u>
800 <u>Other Objects</u>				
830 Interest				136,485.91
Total Other Objects				\$136,485.91
900 <u>Other Uses of Funds</u>				
910 Redemption of Principal				141,979.64
Total Other Uses of Funds				\$141,979.64
Total 5100 Debt Service / Other Expenditures and Financing Uses				\$278,465.55

LEA : 105204703 Penncrest SD

Printed 11/24/2021 11:43:01 AM

General Fund (10)

5110 Debt Service	<u>Elementary</u>	<u>Secondary</u>	<u>Federal</u>	<u>Total</u>
800 <u>Other Objects</u>				
830 Interest				136,485.91
Total Other Objects				\$136,485.91
900 <u>Other Uses of Funds</u>				
910 Redemption of Principal				141,979.64
Total Other Uses of Funds				\$141,979.64
Total 5110 Debt Service				\$278,465.55

LEA : 105204703 Penncrest SD

Printed 11/24/2021 11:43:01 AM

General Fund (10)

5200 Interfund Transfers – Out	<u>Elementary</u>	<u>Secondary</u>	<u>Federal</u>	<u>Total</u>
900 <u>Other Uses of Funds</u>				
939 Other Fund Transfers				1,300,000.00
Total Other Uses of Funds				\$1,300,000.00
Total 5200 Interfund Transfers – Out				\$1,300,000.00

LEA : 105204703 Penncrest SD

Printed 11/24/2021 11:43:01 AM

General Fund (10)

5230 Capital Projects Fund Transfers	<u>Elementary</u>	<u>Secondary</u>	<u>Federal</u>	<u>Total</u>
900 <u>Other Uses of Funds</u>				
939 Other Fund Transfers				1,300,000.00
Total Other Uses of Funds				\$1,300,000.00
Total 5230 Capital Projects Fund Transfers				\$1,300,000.00

LEA : 105204703 Penncrest SD

Printed 11/24/2021 11:42:42 AM

Other Capital Projects Fund (39)

2000 Support Services

Total

800 Other Objects
810 Dues and Fees

352,722.50

Total Other Objects	\$352,722.50
Total 2000 Support Services	\$352,722.50

LEA : 105204703 Penncrest SD

Printed 11/24/2021 11:42:42 AM

Other Capital Projects Fund (39)

2300 Support Services – Administration

Elementary

Secondary

Federal

Total

800 Other Objects

810 Dues and Fees

352,722.50

Total Other Objects				\$352,722.50
Total 2300 Support Services – Administration				\$352,722.50

LEA : 105204703 Penncrest SD

Printed 11/24/2021 11:42:42 AM

Other Capital Projects Fund (39)

2390 Other Administration Services

Elementary Secondary Federal Total

800 Other Objects

810 Dues and Fees 352,722.50

Total Other Objects \$352,722.50

Total 2390 Other Administration Services \$352,722.50

LEA : 105204703 Penncrest SD

Printed 11/24/2021 11:42:54 AM

Other Capital Projects Fund (39)

4000 Facilities Acquisition, Construction and Improvement Services

Total

300 Purchased Professional and Technical Services

330 Other Professional Services	286,680.63
---------------------------------	------------

Total Purchased Professional and Technical Services	\$286,680.63
--	---------------------

400 Purchased Property Services

450 Construction Services	6,859,199.24
---------------------------	--------------

Total Purchased Property Services	\$6,859,199.24
--	-----------------------

600 Supplies

610 General Supplies	15,823.59
----------------------	-----------

Total Supplies	\$15,823.59
-----------------------	--------------------

700 Property

766 Capitalized Technology Equipment – Replacement	19,730.00
--	-----------

Total Property	\$19,730.00
-----------------------	--------------------

Total 4000 Facilities Acquisition, Construction and Improvement Services	\$7,181,433.46
---	-----------------------

LEA : 105204703 Penncrest SD

Printed 11/24/2021 11:42:54 AM

Other Capital Projects Fund (39)

4400 Architecture and Engineering Services / Educational Specifications – Improvements	<u>Elementary</u>	<u>Secondary</u>	<u>Federal</u>	<u>Total</u>
300 <u>Purchased Professional and Technical Services</u>				
330 Other Professional Services				63,949.50
Total Purchased Professional and Technical Services				\$63,949.50
Total 4400 Architecture and Engineering Services / Educational Specifications – Improvements				\$63,949.50

LEA : 105204703 Penncrest SD

Printed 11/24/2021 11:42:54 AM

Other Capital Projects Fund (39)

4600 Existing Building Improvement Services	<u>Elementary</u>	<u>Secondary</u>	<u>Federal</u>	<u>Total</u>
300 <u>Purchased Professional and Technical Services</u>				
330 Other Professional Services				222,731.13
Total Purchased Professional and Technical Services				\$222,731.13
400 <u>Purchased Property Services</u>				
450 Construction Services				6,859,199.24
Total Purchased Property Services				\$6,859,199.24
600 <u>Supplies</u>				
610 General Supplies				15,823.59
Total Supplies				\$15,823.59
700 <u>Property</u>				
766 Capitalized Technology Equipment – Replacement				19,730.00
Total Property				\$19,730.00
Total 4600 Existing Building Improvement Services				\$7,117,483.96

LEA : 105204703 Penncrest SD

Printed 11/24/2021 11:43:03 AM

Other Capital Projects Fund (39)

5000 Other Expenditures and Financing Uses

Total

900 Other Uses of Funds

990 Miscellaneous Other Uses of Funds

75,668.40

Total Other Uses of Funds

\$75,668.40

Total 5000 Other Expenditures and Financing Uses

\$75,668.40

LEA : 105204703 Penncrest SD

Printed 11/24/2021 11:43:03 AM

Other Capital Projects Fund (39)

5100 Debt Service / Other Expenditures and Financing Uses	<u>Elementary</u>	<u>Secondary</u>	<u>Federal</u>	<u>Total</u>
900 <u>Other Uses of Funds</u>				
990 Miscellaneous Other Uses of Funds				75,668.40
Total Other Uses of Funds				\$75,668.40
Total 5100 Debt Service / Other Expenditures and Financing Uses				\$75,668.40

LEA : 105204703 Penncrest SD

Printed 11/24/2021 11:43:03 AM

Other Capital Projects Fund (39)

5150 Bond Discounts

<u>Elementary</u>	<u>Secondary</u>	<u>Federal</u>	<u>Total</u>
-------------------	------------------	----------------	--------------

900 Other Uses of Funds

990 Miscellaneous Other Uses of Funds			75,668.40
---------------------------------------	--	--	-----------

Total Other Uses of Funds			\$75,668.40
----------------------------------	--	--	--------------------

Total 5150 Bond Discounts			\$75,668.40
----------------------------------	--	--	--------------------

	<u>General Fund(10)</u>	<u>Student Sponsored Activity Fund(21)</u>	<u>Public Purpose Trust(27)</u>	<u>Other Compt Approved (28)</u>	<u>Athletic / Activity(29)</u>
1000 <u>Instruction</u>					
1100 Regular Programs - Elementary / Secondary	25,054,992.07				
1200 Special Programs - Elementary / Secondary	6,486,185.66				
1300 Vocational Education	1,435,251.27				
1400 Other Instructional Programs - Elementary / Secondary	1,690,862.83				
1500 Nonpublic School Programs	323,516.39				
Total Instruction	\$34,990,808.22				
2000 <u>Support Services</u>					
2100 Support Services - Students	1,305,685.60				
2200 Support Services - Instructional Staff	1,988,573.74				
2300 Support Services - Administration	2,844,987.16				
2400 Support Services - Pupil Health	712,549.28				
2500 Support Services - Business	675,352.28				
2600 Operation and Maintenance of Plant Services	4,174,627.70				
2700 Student Transportation Services	3,804,108.86				
2800 Support Services - Central	146,692.33				
2900 Other Support Services	64,568.88				
Total Support Services	\$15,717,145.83				
3000 <u>Operation of Non-Instructional Services</u>					
3200 Student Activities	920,911.10				
3300 Community Services	9,971.18				
3400 Scholarships and Awards	(2,250.00)				
Total Operation of Non-Instructional Services	\$928,632.28				
4000 <u>Facilities Acquisition, Construction and Improvement Services</u>					
4400 Architecture and Engineering Services / Educational Specifications - Improvements					
4600 Existing Building Improvement Services					
Total Facilities Acquisition, Construction and Improvement Services					
5000 <u>Other Expenditures and Financing Uses</u>					
5100 Debt Service / Other Expenditures and Financing Uses	278,465.55				
5200 Interfund Transfers - Out	1,300,000.00				
Total Other Expenditures and Financing Uses	\$1,578,465.55				
TOTAL ACTUAL EXPENDITURES & OTHER FINANCING USES	\$53,215,051.88				

LEA : 105204703 Penncrest SD

Printed 11/24/2021 11:43:23 AM

	<u>Capital Reserve (690.1850)(31)</u>	<u>Capital Reserve (1431)(32)</u>	<u>Other Capital Projects Fund(39)</u>	<u>Debt Service(40)</u>	<u>Permanent(90)</u>
1000 <u>Instruction</u>					
1100 Regular Programs - Elementary / Secondary					
1200 Special Programs - Elementary / Secondary					
1300 Vocational Education					
1400 Other Instructional Programs - Elementary / Secondary					
1500 Nonpublic School Programs					
Total Instruction					
2000 <u>Support Services</u>					
2100 Support Services - Students					
2200 Support Services - Instructional Staff					
2300 Support Services - Administration			352,722.50		
2400 Support Services - Pupil Health					
2500 Support Services - Business					
2600 Operation and Maintenance of Plant Services					
2700 Student Transportation Services					
2800 Support Services - Central					
2900 Other Support Services					
Total Support Services			\$352,722.50		
3000 <u>Operation of Non-Instructional Services</u>					
3200 Student Activities					
3300 Community Services					
3400 Scholarships and Awards					
Total Operation of Non-Instructional Services					
4000 <u>Facilities Acquisition, Construction and Improvement Services</u>					
4400 Architecture and Engineering Services / Educational Specifications - Improvements			63,949.50		
4600 Existing Building Improvement Services			7,117,483.96		
Total Facilities Acquisition, Construction and Improvement Services			\$7,181,433.46		
5000 <u>Other Expenditures and Financing Uses</u>					
5100 Debt Service / Other Expenditures and Financing Uses			75,668.40		
5200 Interfund Transfers - Out					
Total Other Expenditures and Financing Uses			\$75,668.40		
TOTAL ACTUAL EXPENDITURES & OTHER FINANCING USES			\$7,609,824.36		

LEA : 105204703 Penncrest SD

Printed 11/24/2021 11:43:23 AM

	<u>Total</u>
1000 <u>Instruction</u>	
1100 Regular Programs - Elementary / Secondary	25,054,992.07
1200 Special Programs - Elementary / Secondary	6,486,185.66
1300 Vocational Education	1,435,251.27
1400 Other Instructional Programs - Elementary / Secondary	1,690,862.83
1500 Nonpublic School Programs	323,516.39
Total Instruction	\$34,990,808.22
2000 <u>Support Services</u>	
2100 Support Services - Students	1,305,685.60
2200 Support Services - Instructional Staff	1,988,573.74
2300 Support Services - Administration	3,197,709.66
2400 Support Services - Pupil Health	712,549.28
2500 Support Services - Business	675,352.28
2600 Operation and Maintenance of Plant Services	4,174,627.70
2700 Student Transportation Services	3,804,108.86
2800 Support Services - Central	146,692.33
2900 Other Support Services	64,568.88
Total Support Services	\$16,069,868.33
3000 <u>Operation of Non-Instructional Services</u>	
3200 Student Activities	920,911.10
3300 Community Services	9,971.18
3400 Scholarships and Awards	(2,250.00)
Total Operation of Non-Instructional Services	\$928,632.28
4000 <u>Facilities Acquisition, Construction and Improvement Services</u>	
4400 Architecture and Engineering Services / Educational Specifications - Improvements	63,949.50
4600 Existing Building Improvement Services	7,117,483.96
Total Facilities Acquisition, Construction and Improvement Services	\$7,181,433.46
5000 <u>Other Expenditures and Financing Uses</u>	
5100 Debt Service / Other Expenditures and Financing Uses	354,133.95
5200 Interfund Transfers - Out	1,300,000.00
Total Other Expenditures and Financing Uses	\$1,654,133.95
TOTAL ACTUAL EXPENDITURES & OTHER FINANCING USES	\$60,824,876.24

LEA : 105204703 Penncrest SD

Printed 11/24/2021 11:43:32 AM

PSERS Salary Data (Salary Data should relate to the General Fund only)

Amount	Description	Amount
	Total Salary Base for salaries subject to PSERS withholding	18,941,537.19
	Total Federally Funded salaries subject to PSERS withholding	1,127,364.84

Title I Expenditure Data

Amount	Description	Amount
	Expenditures Funded with Current Title I Funds	563,958.02
	Expenditures Funded with Carry over Title I Funds	407,312.19
Total	Title I Expenditure Data	\$971,270.21

Title IV Revenue Data

Amount	Description	Amount
	Revenue from Title IV-A-1: Student Support and Academic Enrichment Grants	101,643.43
	Revenue from Title IV-B: 21st Century Community Learning Centers	

Title V Revenue Data

Amount	Description	Amount
	Revenue from Title V-B-2: Rural and Low-Income School Programs	
	Revenue from Title V-B-1: Small Rural School Achievement (Directly from the Federal Govt)	

1 .	<u>Current Special Education Expenditures/Expenses within Functions 1000, 2000, 3100, and 3200</u>	
2 .	<u>Current Special Education Expenditures for Instruction Functions 1000 and 3200</u>	6,330,528.45
3 .	<u>Current Special Education Expenditures for Pupil Support Services Function 2100</u>	505,017.91
4 .	<u>Current Special Education Expenditures for Instructional Staff Support Services Function 2200</u>	357,056.51
5 .	<u>Current Special Education Expenditures for Student Transportation Support Services Function 2700</u>	757,060.40

Note: Do not report total Special Education expenditures for the functions listed above. Refer to the AFR User Manual for specific instructions on Funds/Functions/Objects to be included and excluded on each line.

Benefits for Staff Relative to Collective Bargaining Agreements

	OBJECT	COVERED	NOT COVERED	TOTAL
10 General Fund				
	211 Medical Insurance			
	212 Dental Insurance			
	215 Eye Care Insurance	15,606.38	821.40	16,427.78
	216 Prescription Insurance			
	271 Self-Insurance Medical Benefits	5,459,339.85	287,333.68	5,746,673.53
	272 Self-Insurance Dental Benefits	203,793.53	10,725.97	214,519.50
	275 Self-Insurance Eye Care Benefits			
	276 Self-Insurance Prescription Benefits			
	FUND TOTAL	\$5,678,739.76	\$298,881.05	\$5,977,620.81
50 Enterprise Fund				
	211 Medical Insurance			
	212 Dental Insurance			
	215 Eye Care Insurance	156.62		156.62
	216 Prescription Insurance			
	271 Self-Insurance Medical Benefits	63,140.00		63,140.00
	272 Self-Insurance Dental Benefits	2,480.50		2,480.50
	275 Self-Insurance Eye Care Benefits			
	276 Self-Insurance Prescription Benefits			
	FUND TOTAL	\$65,777.12		\$65,777.12
60 Internal Service Fund	No Self Insurance data to report			
	211 Medical Insurance			
	212 Dental Insurance			
	215 Eye Care Insurance			
	216 Prescription Insurance			
	271 Self-Insurance Medical Benefits			
	272 Self-Insurance Dental Benefits			
	275 Self-Insurance Eye Care Benefits			
	276 Self-Insurance Prescription Benefits			
	FUND TOTAL			
Total of All Funds		\$5,744,516.88	\$298,881.05	\$6,043,397.93

LEA : 105204703 Penncrest SD

Printed 11/24/2021 11:43:41 AM

Function	Special Education (Prior Year)	Nonspecial Education (Prior Year)	Total (Prior Year)	Special Education (Current Year)	Nonspecial Education (Current Year)	Total (Current Year)
2120 Guidance Services	472,018.01	314,678.67	786,696.68	505,017.91	336,678.61	841,696.52
2140 Psychological Services	344,276.91	18,119.84	362,396.75	358,275.77	18,856.62	377,132.39
2150 Speech Pathology and Audiology Services						
2160 Social Work Services						
2260 Instruction and Curriculum Development Services	88,351.34	265,054.07	353,405.41	200,829.17	200,829.18	401,658.35
2350 Legal and Accounting Services	4,966.21	44,695.89	49,662.10	5,077.57	45,698.17	50,775.74
2420 Medical Services						
2440 Nursing Services	322,386.29	483,579.43	805,965.72	284,875.71	427,313.57	712,189.28
2700 Student Transportation Services	776,376.69	2,920,655.15	3,697,031.84	757,060.40	3,047,048.46	3,804,108.86
Total	\$2,008,375.45	\$4,046,783.05	\$6,055,158.50	\$2,111,136.53	\$4,076,424.61	\$6,187,561.14

LEA : 105204703 Penncrest SD

Printed 11/24/2021 11:43:46 AM

(PRINCIPAL AMOUNTS ONLY)

GOVERNMENTAL FUNDS/ ACTIVITIES

	Short-Term Borrowing	General Obligation Bonds/Notes	Authority Building Obligations	Other Long-Term Debt	Other Post- Employment Benefits (OPEB)	Compensated Absences	Net Pension Liability	Total
1. Debt at Beginning of Fiscal Year		9,995,000.00		5,432,088.91	3,092,449.00	1,895,989.00	69,893,000.00	90,308,526.91
2. Additional Debt Incurred During Year					342,873.00		3,375,000.00	3,717,873.00
3. Retirements and Repayments				141,979.64		164,927.00		306,906.64
4. Debt at End of Fiscal Year		9,995,000.00		5,290,109.27	3,435,322.00	1,731,062.00	73,268,000.00	93,719,493.27
5. Accreted Interest at End Of Fiscal Year								
6. Total Debt and Accreted Interest		9,995,000.00		5,290,109.27	3,435,322.00	1,731,062.00	73,268,000.00	93,719,493.27
7. Current Portion P&I - Due within 1 year		310,343.76		220,346.02				530,689.78
8. Interest Paid during current fiscal year		58,119.53		78,366.38				136,485.91

(PRINCIPAL AMOUNTS ONLY)

PROPRIETARY FUNDS

1. Debt at Beginning of Fiscal Year
2. Additional Debt Incurred During Year
3. Retirements and Repayments
4. Debt at End of Fiscal Year
5. Accreted Interest at End Of Fiscal Year
6. Total Debt and Accreted Interest
7. Current Portion P&I - Due within 1 year
8. Interest Paid during current fiscal year

LEA : 105204703 Penncrest SD

Printed 11/24/2021 11:43:46 AM

Total Principal and Interest Payments Made by Your School - All Funds

Function	Fund		Principal (910)	Principal (920)	Interest (830)	Total (Principal +Interest)	Misc Other Uses (990)
5110	10	General Fund	141,979.64		136,485.91	278,465.55	
5110	20	Special Revenue Funds					
5110	30	Capital Projects Funds					
5110	40	Debt Service Fund					
5110	90	Permanent Fund					
5120	10	General Fund					
5120	20	Special Revenue Funds					
5120	30	Capital Projects Funds					
5120	40	Debt Service Fund					
Total Debt Payments - Governmental Funds			\$141,979.64		\$136,485.91	\$278,465.55	

Function	Fund		Principal (910)	Principal (920)	Interest (830)	Total (Principal +Interest)
5110	50	Enterprise Fund				
5110	60	Internal Service Fund				
5120	50	Enterprise Fund				
5120	60	Internal Service Fund				
Total Debt Payments - Proprietary Funds						

LEA : 105204703 Penncrest SD

Printed 11/24/2021 11:43:46 AM

Debt Details
Governmental Funds/ Activities

Debt Category	Debt Issue Date (MM/YYYY)	Principal Amounts Only				Current Portion Due Within One Year (Principal and Interest)	Interest Paid During Fiscal Year
		Debt at Beginning of Fiscal Year	Additions	Reductions / Repayments	Debt at End of Fiscal Year		
General Obligation Bonds/Notes – CIB	12/2020	9,995,000.00			9,995,000.00	310,343.76	58,119.53
Other Long Term Debt/Liabilities		5,432,088.91		141,979.64	5,290,109.27	220,346.02	78,366.38
Compensated Absences		1,895,989.00		164,927.00	1,731,062.00		
Other Post-Employment Benefits (OPEB)		3,092,449.00	342,873.00		3,435,322.00		
Net Pension Liability		69,893,000.00	3,375,000.00		73,268,000.00		
Totals for Debt Entered:		\$90,308,526.91	\$3,717,873.00	\$306,906.64	\$93,719,493.27	\$530,689.78	\$136,485.91

LEA : 105204703 Penncrest SD

General Fund (10)

Section 1: Tuition/Purchased Services as Reported within Expenditure Detail	Amount
Tuition Reported in General Fund Expenditures 1000-560	3,746,371.73
Purchased Services in General Fund Expenditures 1000-594 and 1000-597	
Section 1 Total	\$3,746,371.73

Section 2: Tuition Paid to Institution Types During Fiscal Year	Tuition Paid For Nonspecial Education	Tuition Paid For Special Education	Total
1 1306 Institutions			
2 Institutionalized Children's Programs			
3 Juveniles Incarcerated in Adult Facilities	13,377.30		13,377.30
4 Residential Treatment Facilities			
5 Other Local Education Agencies	11,311.44		11,311.44
6 Brick and Mortar Charter Schools			
7 Cyber Charter Schools	1,598,832.46	636,976.43	2,235,808.89
8 Career and Technology Centers	1,435,251.27		1,435,251.27
9 Approved Private Schools	43,470.75		43,470.75
10 PA Chartered Schools for the Deaf and Blind			
11 Private Residential Rehabilitative Institutions			
12 Juvenile Detention Centers			
13 Special Program Jointures			
14 Other Tuition Not Included Elsewhere In This Section	7,152.08		7,152.08
Section 2 Total	\$3,109,395.30	\$636,976.43	\$3,746,371.73

1 .	<u>Student Transportation Services for Educational Field Trips</u>	
2 .	<u>Student Transportation Services for Student Activities</u>	1,026.26
3 .	<u>Rental of Vehicles for Student Transportation Services</u>	
4 .	<u>Capital Reserve Funds</u>	

Include only district-owned transportation expenditures paid from State or local money.
DO NOT include federal expenditures or payments to contract service providers.
Contracted transportation services should not be recorded on this schedule.

LEA : 105204703 Penncrest SD

Printed 11/24/2021 11:43:56 AM

Food Service / Cafeteria Operations Fund (51)

1000 Instruction	Total
100 <u>Personnel Services – Salaries</u>	
100 Personnel Services – Salaries	511,387.45
Total Personnel Services – Salaries	\$511,387.45
200 <u>Personnel Services – Employee Benefits</u>	
210 Group Insurance – Contracted Provider	470.27
220 Social Security Contributions	13,282.59
230 PSERS Retirement Contributions	51,989.16
250 Unemployment Compensation	496.44
260 Workers' Compensation	3,275.61
270 Group Insurance – Self-Insurance	65,620.50
Total Personnel Services – Employee Benefits	\$135,134.57
300 <u>Purchased Professional and Technical Services</u>	
340 Technical Services	5,165.00
Total Purchased Professional and Technical Services	\$5,165.00
400 <u>Purchased Property Services</u>	
430 Repairs and Maintenance Services	3,816.64
460 Extermination Services	4,956.00
Total Purchased Property Services	\$8,772.64
500 <u>Other Purchased Services</u>	
599 Other Miscellaneous Purchased Services	133,566.73
Total Other Purchased Services	\$133,566.73
600 <u>Supplies</u>	
610 General Supplies	80,532.81
630 Food	591,623.32
Total Supplies	\$672,156.13
700 <u>Property</u>	
740 Depreciation	15,125.00
Total Property	\$15,125.00
Total 1000 Instruction	\$1,481,307.52

LEA : 105204703 Penncrest SD

Printed 11/24/2021 11:43:56 AM

Food Service / Cafeteria Operations Fund (51)

1100 Regular Programs – Elementary / Secondary

Elementary Secondary Federal Total

100 <u>Personnel Services – Salaries</u>				
100 Personnel Services – Salaries				511,387.45
Total Personnel Services – Salaries				\$511,387.45
200 <u>Personnel Services – Employee Benefits</u>				
210 Group Insurance – Contracted Provider				470.27
220 Social Security Contributions				13,282.59
230 PSERS Retirement Contributions				51,989.16
250 Unemployment Compensation				496.44
260 Workers' Compensation				3,275.61
270 Group Insurance – Self-Insurance				65,620.50
Total Personnel Services – Employee Benefits				\$135,134.57
300 <u>Purchased Professional and Technical Services</u>				
340 Technical Services				5,165.00
Total Purchased Professional and Technical Services				\$5,165.00
400 <u>Purchased Property Services</u>				
430 Repairs and Maintenance Services				3,816.64
460 Extermination Services				4,956.00
Total Purchased Property Services				\$8,772.64
500 <u>Other Purchased Services</u>				
599 Other Miscellaneous Purchased Services				133,566.73
Total Other Purchased Services				\$133,566.73
600 <u>Supplies</u>				
610 General Supplies				80,532.81
630 Food				591,623.32
Total Supplies				\$672,156.13
700 <u>Property</u>				
740 Depreciation				15,125.00
Total Property				\$15,125.00
Total 1100 Regular Programs – Elementary / Secondary				\$1,481,307.52

LEA : 105204703 Penncrest SD

Printed 11/24/2021 11:43:56 AM

Food Service / Cafeteria Operations Fund (51)

1110 Regular Programs

	<u>Elementary</u>	<u>Secondary</u>	<u>Federal</u>	<u>Total</u>
100 <u>Personnel Services – Salaries</u>				
100 Personnel Services – Salaries				511,387.45
Total Personnel Services – Salaries				\$511,387.45
200 <u>Personnel Services – Employee Benefits</u>				
210 Group Insurance – Contracted Provider				470.27
220 Social Security Contributions				13,282.59
230 PSERS Retirement Contributions				51,989.16
250 Unemployment Compensation				496.44
260 Workers' Compensation				3,275.61
270 Group Insurance – Self-Insurance				65,620.50
Total Personnel Services – Employee Benefits				\$135,134.57
300 <u>Purchased Professional and Technical Services</u>				
340 Technical Services				5,165.00
Total Purchased Professional and Technical Services				\$5,165.00
400 <u>Purchased Property Services</u>				
430 Repairs and Maintenance Services				3,816.64
460 Extermination Services				4,956.00
Total Purchased Property Services				\$8,772.64
500 <u>Other Purchased Services</u>				
599 Other Miscellaneous Purchased Services				133,566.73
Total Other Purchased Services				\$133,566.73
600 <u>Supplies</u>				
610 General Supplies				80,532.81
630 Food				591,623.32
Total Supplies				\$672,156.13
700 <u>Property</u>				
740 Depreciation				15,125.00
Total Property				\$15,125.00
Total 1110 Regular Programs				\$1,481,307.52

	<u>Food Service(51)</u>	<u>Child Care Operations(52)</u>	<u>Other Enterprise(58)</u>	<u>Internal Service(60)</u>	<u>Total</u>
1000 Instruction					
1100 Regular Programs - Elementary / Secondary	1,481,307.52				1,481,307.52
Total Instruction	\$1,481,307.52				\$1,481,307.52
TOTAL ACTUAL EXPENDITURES & OTHER FINANCING USES	\$1,481,307.52				\$1,481,307.52

LEA : 105204703 Penncrest SD

Printed 11/24/2021 11:44:15 AM

Fund	School	School Number	Local Personnel	Local Nonpersonnel	State Personnel	State Nonpersonnel	Federal Personnel	Federal Nonpersonnel	Total	Explanation
10										
	Cambridge Springs El Sch	1630	1,813,263.83	164,249.90	3,282,025.70	297,292.15	456,055.06	251,984.63	6,264,871.27	
	Cambridge Springs JSHS	1629	2,105,049.87	470,064.30	3,810,161.36	850,821.09	130,189.20	231,366.96	7,597,652.78	
	Maplewood El Sch	6137	1,837,532.75	267,914.73	3,325,952.70	484,928.34	421,798.66	273,154.71	6,611,281.89	
	Maplewood JSHS	6942	2,312,353.81	535,526.16	4,185,383.58	969,307.71	146,464.16	260,290.16	8,409,325.58	
	Saegertown El Sch	7278	2,025,483.68	211,337.32	3,666,145.76	382,522.66	402,989.15	261,256.59	6,949,735.16	
	Saegertown JSHS	6136	2,176,752.53	504,568.31	3,939,943.89	913,273.69	141,479.12	251,430.97	7,927,448.51	
Total			12,270,436.47	2,153,660.72	22,209,612.99	3,898,145.64	1,698,975.35	1,529,484.02	43,760,315.19	

	<u>Nonspecial Education</u>	<u>Special Education</u>
1000 Instruction		
1100 Regular Programs - Elementary / Secondary	91,582.00	14,502.00
Total Instruction	\$91,582.00	\$14,502.00
TOTAL ACTUAL EXPENDITURES & OTHER FINANCING USES	\$91,582.00	\$14,502.00

LEA : 105204703 Penncrest SD

Printed 11/24/2021 11:44:32 AM

1000 Instruction

100 <u>Personnel Services - Salaries</u>		
100 Personnel Services - Salaries	50,711.00	8,030.00
Total Personnel Services - Salaries	\$50,711.00	\$8,030.00
200 <u>Personnel Services - Employee Benefits</u>		
210 Group Insurance - Contracted Provider	174.00	28.00
220 Social Security Contributions	3,838.00	608.00
230 PSERS Retirement Contributions	17,522.00	2,775.00
250 Unemployment Compensation	56.00	9.00
260 Workers' Compensation	288.00	45.00
270 Group Insurance - Self-Insurance	15,574.00	2,466.00
299 All Other Employee Benefits	3,419.00	541.00
Total Personnel Services - Employee Benefits	\$40,871.00	\$6,472.00
Total 1000 Instruction	\$91,582.00	\$14,502.00

LEA : 105204703 Penncrest SD

Printed 11/24/2021 11:44:32 AM

1100 Regular Programs - Elementary / Secondary	<u>Nonspecial Education</u>	<u>Special Education</u>
100 <u>Personnel Services - Salaries</u>		
100 Personnel Services - Salaries	50,711.00	8,030.00
Total Personnel Services - Salaries	\$50,711.00	\$8,030.00
200 <u>Personnel Services - Employee Benefits</u>		
210 Group Insurance - Contracted Provider	174.00	28.00
220 Social Security Contributions	3,838.00	608.00
230 PSERS Retirement Contributions	17,522.00	2,775.00
250 Unemployment Compensation	56.00	9.00
260 Workers' Compensation	288.00	45.00
270 Group Insurance - Self-Insurance	15,574.00	2,466.00
299 All Other Employee Benefits	3,419.00	541.00
Total Personnel Services - Employee Benefits	\$40,871.00	\$6,472.00
Total 1100 Regular Programs - Elementary / Secondary	\$91,582.00	\$14,502.00

LEA : 105204703 Penncrest SD

Printed 11/24/2021 11:44:32 AM

1110 Regular Programs

	<u>Nonspecial Education</u>	<u>Special Education</u>
100 <u>Personnel Services - Salaries</u>		
100 Personnel Services - Salaries	50,711.00	8,030.00
Total Personnel Services - Salaries	\$50,711.00	\$8,030.00
200 <u>Personnel Services - Employee Benefits</u>		
210 Group Insurance - Contracted Provider	174.00	28.00
220 Social Security Contributions	3,838.00	608.00
230 PSERS Retirement Contributions	17,522.00	2,775.00
250 Unemployment Compensation	56.00	9.00
260 Workers' Compensation	288.00	45.00
270 Group Insurance - Self-Insurance	15,574.00	2,466.00
299 All Other Employee Benefits	3,419.00	541.00
Total Personnel Services - Employee Benefits	\$40,871.00	\$6,472.00
Total 1110 Regular Programs	\$91,582.00	\$14,502.00

LEA : 105204703 Penncrest SD

Printed 11/24/2021 11:44:35 AM

	<u>Nonspecial Education</u>	<u>Special Education</u>
7000 Revenue from State Sources		
Total Revenue from State Sources	\$11,557	\$1,830
Total	\$11,557	\$1,830
TOTAL REVENUES	\$11,557	\$1,830

LEA : 105204703 Penncrest SD

Printed 11/24/2021 11:44:38 AM

	<u>Nonspecial Education</u>	<u>Special Education</u>
7000 Revenue from State Sources		
7810 State Share of Social Security and Medicare Taxes	1,919	304
7820 State Share of Retirement Contributions	9,638	1,526
Total Revenue from State Sources	\$11,557	\$1,830
TOTAL	\$11,557	\$1,830
TOTAL REVENUES	\$11,557	\$1,830