

# Google Classroom Guide for Parents

Click the icons below to navigate directly to specific sections in this document.



Logging Into Google



Logging into Chrome



Google Classroom

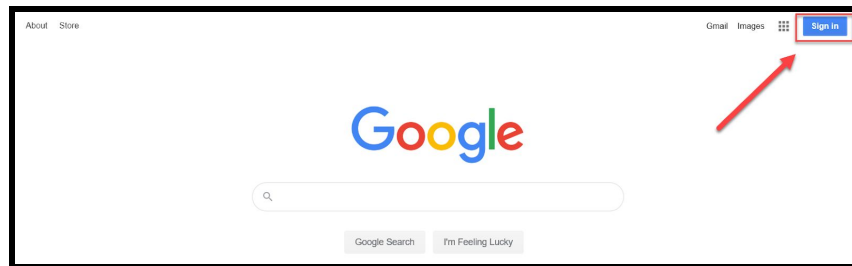


Additional Resources

## Logging into Google:

In order to have full functionality of G Suite for Education, your child must first log in to their CCPS Google Accounts. To do this, follow the steps below or [watch this quick video animation!](#)

1. Go to **www.google.com** from any browser (Chrome is preferred).
2. Click the blue "Sign In" button in the top right corner.



3. Your child should log-in using their [username@star.carrollk12.org](mailto:username@star.carrollk12.org) email and **password**. These are the same ones used to log into a CCPS device at school. Your child may already know this information, or you can access it on the Home Access Center under "Registration".
4. If prompted, sync and link data. Your child should now see his/her initial in the logo in the top right corner.

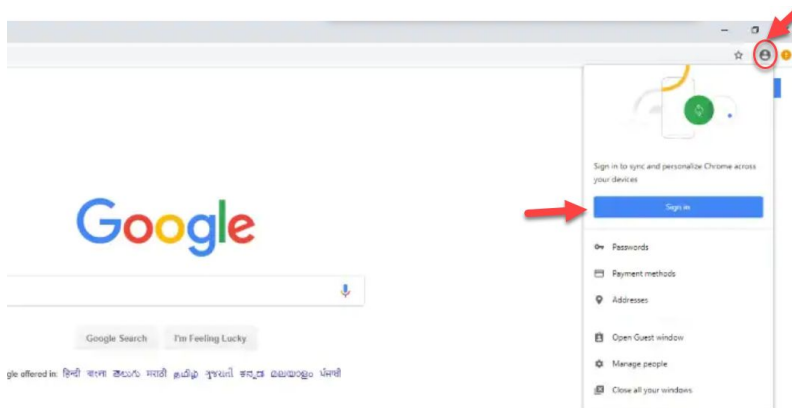


## Logging into Chrome:

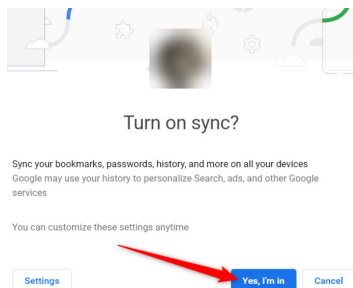
Extensions provide additional functionality in Chrome and Google applications and enhance the overall user experience. In order to install extensions or get extensions that are pushed out to students from the system administrators, your child will want to sign into the Chrome browser. If you do not have the Chrome browser, you may want to [download it here](#). Your PC will then be able to remember your child as a user in the browser, which will stop the need for them to log-in each time. If you have more than one child using the browser, you will be able to toggle back and forth among users.

To log into Chrome, follow the steps below:

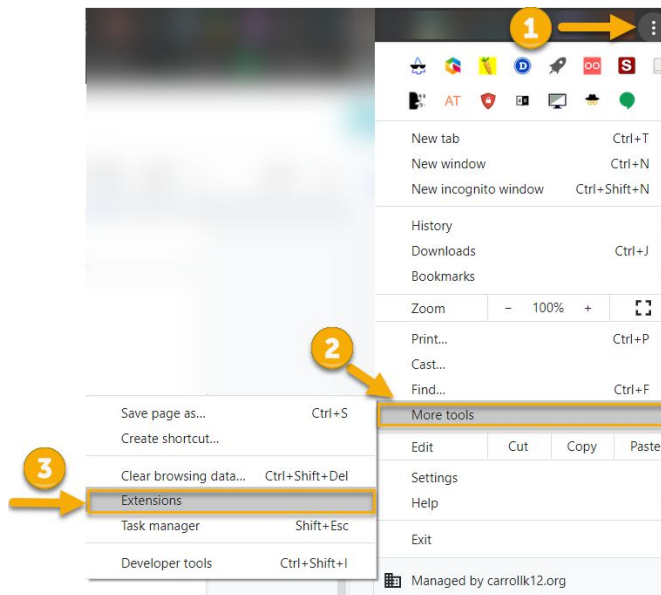
1. Open Chrome
2. Click the icon in the upper right corner of the browser
3. Click Sign In



4. Sign in with your [username@star.carrollk12.org](mailto:username@star.carrollk12.org) email and password
5. If/when prompted, click "Yes, I'm in" to turn on sync.



- Extensions, like Clever, that are already associated with the account should be showing up. Otherwise, click the three dots next to the browser logo in the top right corner and select “More Tools” > “Extensions” and turn on the extensions by clicking the toggle switch.



Some extensions are available for install in the [Chrome web store](#). Extensions like [Kami](#), [Screencastify](#), and [Share to Classroom](#) are popular with teachers using Google Classroom.

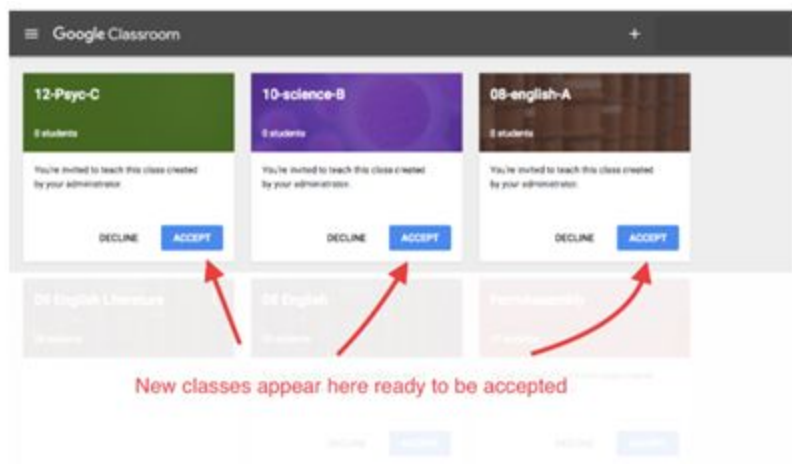
## Accessing Google Classroom:

In order to access Google Classroom and other G Suite applications, follow the steps below or [watch this quick video](#):

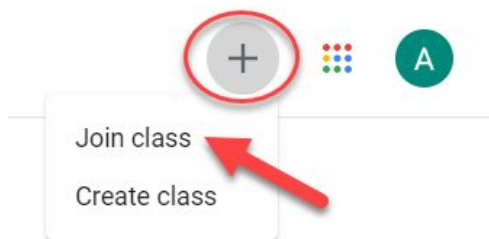
- Click the application launcher (waffle) next to your Google logo.
- Select the Google Classroom app from the list.
- You should now see the Google Classroom dashboard.




4. For any classes that your child has already been added to by teachers, simply click the blue “Accept” button to access the class and content.



5. For any classes that your teacher has provided a join code, click the + icon in the top right corner and select “Join a Class”, then enter the code that was provided. [Watch this quick video animation](#) on joining a class!



## Additional Resources:

1. [Click here](#) to access a more visual instructional guide for parents!
2.  You can also click the links below for quick videos or animations on the student experience in Google Classroom!
  - [Logging Into Google](#)
  - [Accessing Google Applications](#)
  - [Joining a Class with a Code](#)

- [Turning in an Assignment](#)
- [Marking an Assignment as Done](#)
- [Reviewing Assignments](#)
- [Viewing Assignments](#)
- [Navigating Google Drive](#)

3. For troubleshooting support for students, [click here!](#)