



California Voting Rights Act

Transitioning to Trustee Areas

December 8th, 2021

School District Trustee Election Systems

At Large

At-Large Election System is where voters of the entire jurisdiction elect all members to the governing board. There are no Trustee Areas

From Trustee Area

From Trustee Area Election System is where each district is divided into trustee areas and the governing board members (one from each trustee area) is elected by voters from the entire jurisdiction district

By-Trustee Area

By-Trustee Area Election System is where a district is divided into trustee areas and one governing board member is elected by only the registered voters in that particular trustee area

California Voting Rights Act (CVRA)

California Voting Rights Act (CVRA)

- Protected Class
 - A protected class is a group of people sharing a common trait who are legally protected from being discriminated against based on that trait. Examples of protected traits include race, gender, age, disability, and veteran status
- A violation [of the CVRA] is established if it is shown that racially polarized voting occurs in elections for members of the governing body
- Proof of an intent on the part of the voters or elected officials to discriminate against a protected class **is not** required
- The only effective way to comply is to have By-Trustee Elections
 - A district technically can have a different election system, but legal consensus is any other system would leave a district vulnerable to lawsuits

Districting Criteria

- Comply with the U.S. Constitution
- Achieve population equality as nearly as is practicable
 - Total population
 - **Not** Citizens nor Voters
 - Total Population/Trustee Areas = Average
 - Each Trustee Area must be less than 10% between smallest to largest
(Evenwel v. Abbott(2016))
- Comply with the Federal Voting Rights Act
 - “Cracking” Prohibited
 - Splitting like minded voters into several areas to reduce voting power
 - “Packing” Prohibited
 - Packing like minded voters into one area to reduce voting powers in other areas
 - Keep individual Trustee Areas similar to overall demographics of district

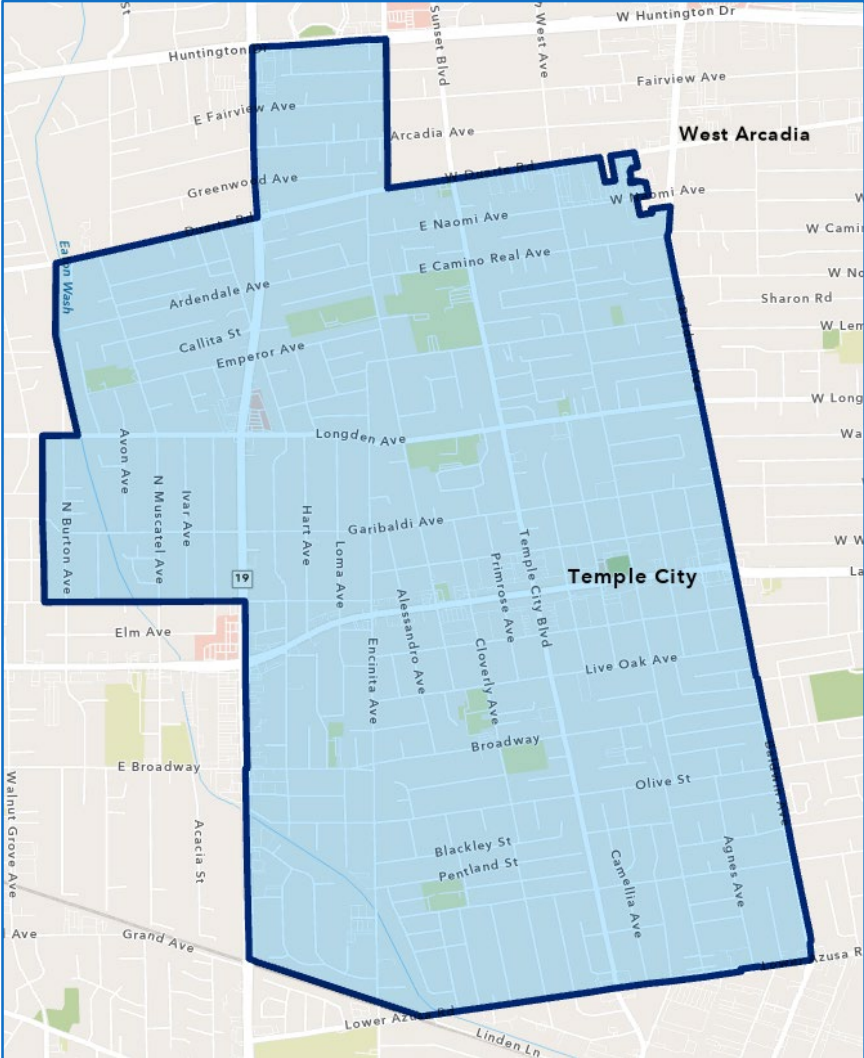
Districting Criteria

- Voting districts shall be geographically contiguous and compact
 - Attempt to make compact and follow existing administrative lines if possible
- Maintain local *communities of interests*
- Communities covered by voting rights act “Protected Class”
 - Race
 - While race is a community of interest, it cannot be the predominant factor in drawing districts
 - Language
 - Rural or agricultural
- Location of incumbents may not be sole factor
- Reviewed Decennially

The CVRA Transition Process

- Hold two (2) public hearings to gather community input on the composition of the trustee area maps
 - Inform community of process
 - Get input from community about composition of maps
- Publish at least one (1) proposed trustee area map for consideration by the community
 - “Elections Code 10010 requires that maps must be public at least 7 days prior to consideration at a public hearing.”
- Publish the potential sequence of elections to show how the staggered terms will impact individual trustee areas.
- Hold at least two (2) additional public hearings over a 45-day period to gather input on proposed map(s) and election sequencing
 - If revisions are made, publish for at least 7 days prior to meetings

Temple City USD Demographics

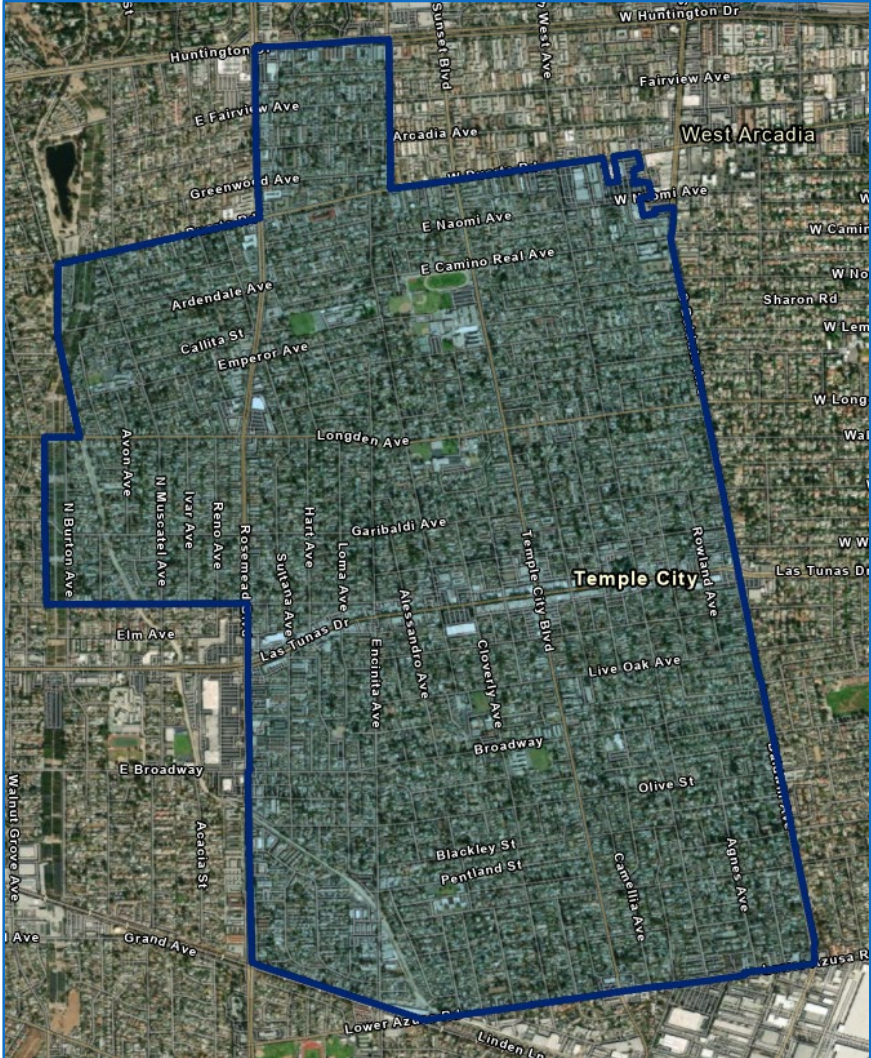


2020 Census Population District Wide	
Population	District
Total Population	35,669
Asian	22,643
	63.5%
American Indian/Alaska Native	56
	0.2%
Black/African American	387
	1.1%
Hispanic/Latino	6,451
	18.1%
Native Hawaiiin/Pacific Islander	19
	0.1%
White	5,149
	14.4%
2 or More Races	789
	2.2%
Other	175
	0.5%

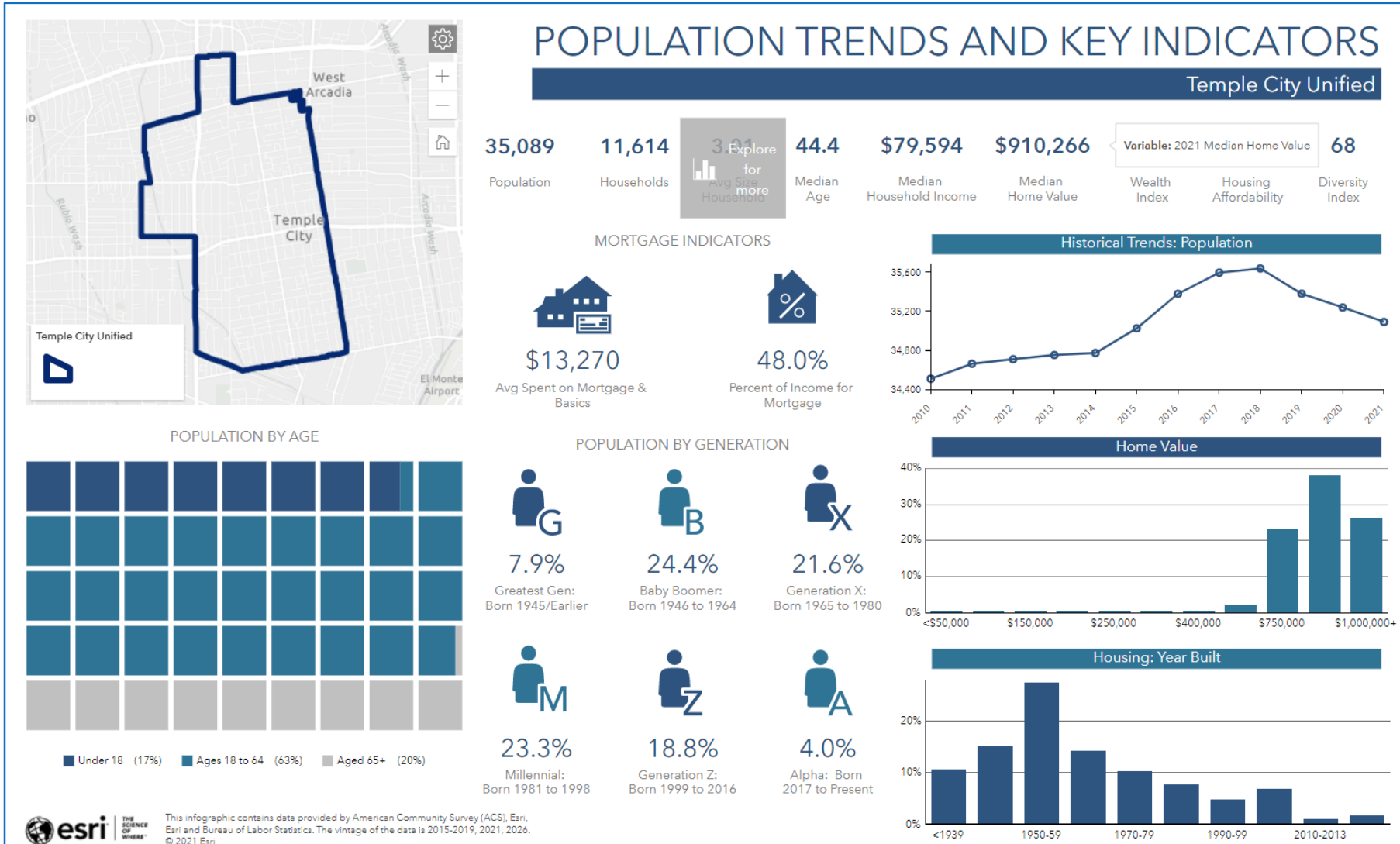
Temple City USD Demographics

Citizens by Voting Age Population Estimate (2015-2019)

CVA Population	
Total CVA Population	22,820
Asian	13,187 57.8%
American Indian/Alaska Native	1 0.0%
Black/African American	379 1.7%
Hispanic/Latino	3,649 16.0%
Native Hawaiiin/Pacific Islander	74 0.3%
White	5,180 22.7%
2 or More Races	350 1.5%



Temple City USD Demographics



Source: ESRI

Data Utilized for Trustee Area Creation

- Census Block Data
 - 2020 census data to be released in September 2021
 - Used to determine Total Population of each Trustee Area
 - Adjusted by the State of California to place incarcerated population back to home area
 - Source: Census Bureau PL-94; Statewide Database, University of California Berkley Law, Center for Research
- American Community Survey – Citizens Voting Age Population (CVAP)
 - 5-year estimates released annually
 - Latest 2015-2019 (released in February 2021)
 - Based on voting age population
 - Used to as a reference source
 - Source: Census Bureau CVAP; Statewide Database, University of California Berkley Law, Center for Research



Data Utilized for Trustee Area Creation

- Census Blocks
 - Smallest level of geography
 - Based upon:
 - Visible features:
 - Roads, rivers, railroad tracks
 - Non-Visible features:
 - Property lines, cities, townships
 - Adjusted every 10 years

Some Census Blocks
are Irregularly Shaped



Trustee Transition Process

Does Not Affect School Boundaries nor Student Enrollment

Primary Considerations

- Comply with CVRA
 - Achieve population equality as nearly as is practicable
 - Total population
 - **Not** Citizens nor Voters
 - Total Population/Trustee Areas = Average
 - $35,669/5 = 7,199.2$
 - Each Trustee Area must be less than 10% between smallest to largest
(Evenwel v. Abbott(2016))

Trustee Transition Process

Secondary Considerations

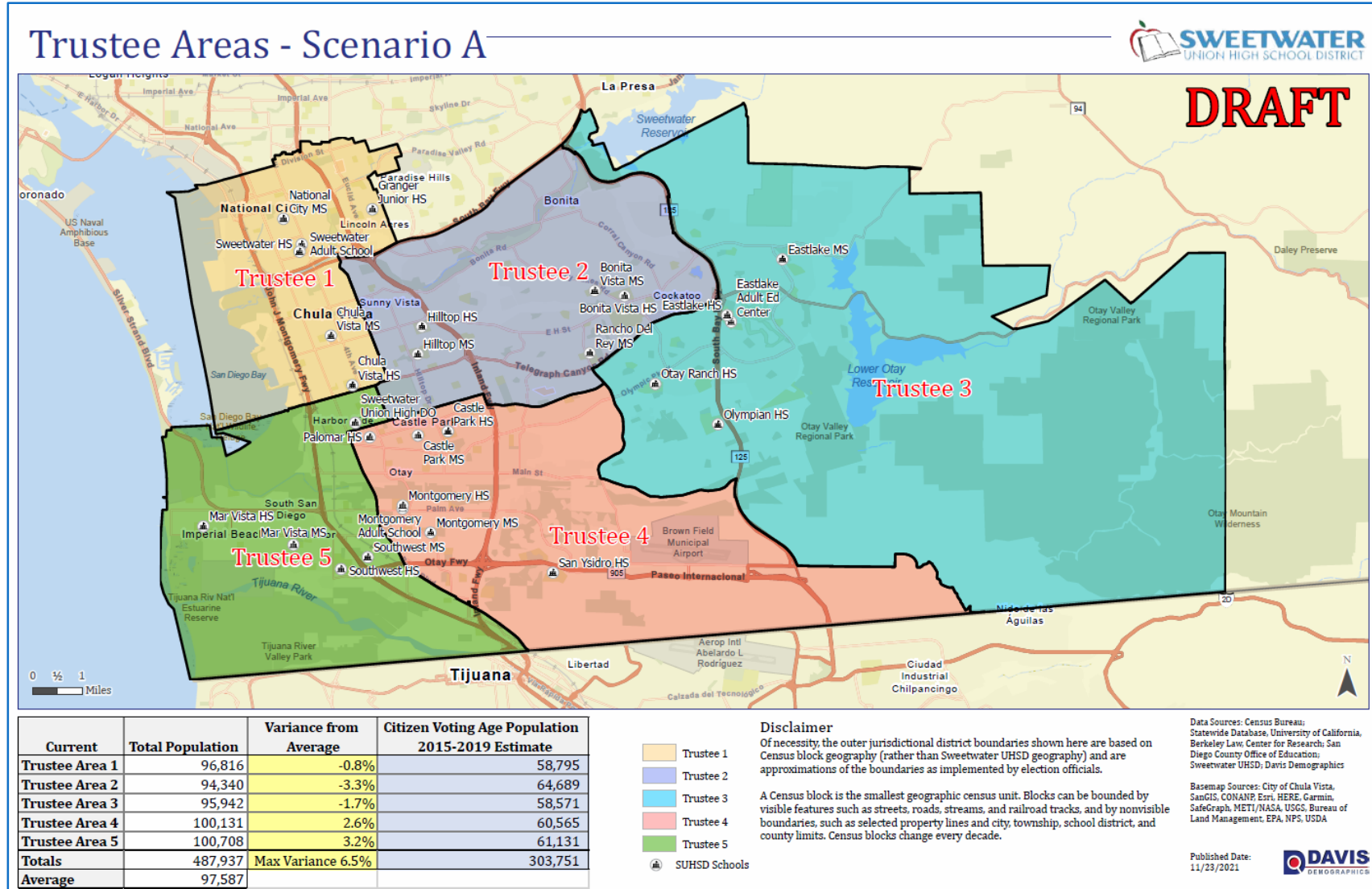
- Comply with the Federal Voting Rights Act
 - “Cracking” Prohibited
 - Splitting like minded voters into several areas to reduce voting power
 - “Packing” Prohibited
 - Packing like minded voters into one area to reduce voting powers in other areas
- Voting districts shall be geographically contiguous and compact
 - Attempt to make compact and follow existing administrative lines if possible
- Maintain local *communities of interests*
 - Communities covered by voting rights act “Protected Class”
 - Race (While race is a community of interest, it cannot be the predominant factor in drawing districts)
 - Language
 - Rural or agricultural
- Location of incumbents may not be sole factor

Scope of Work

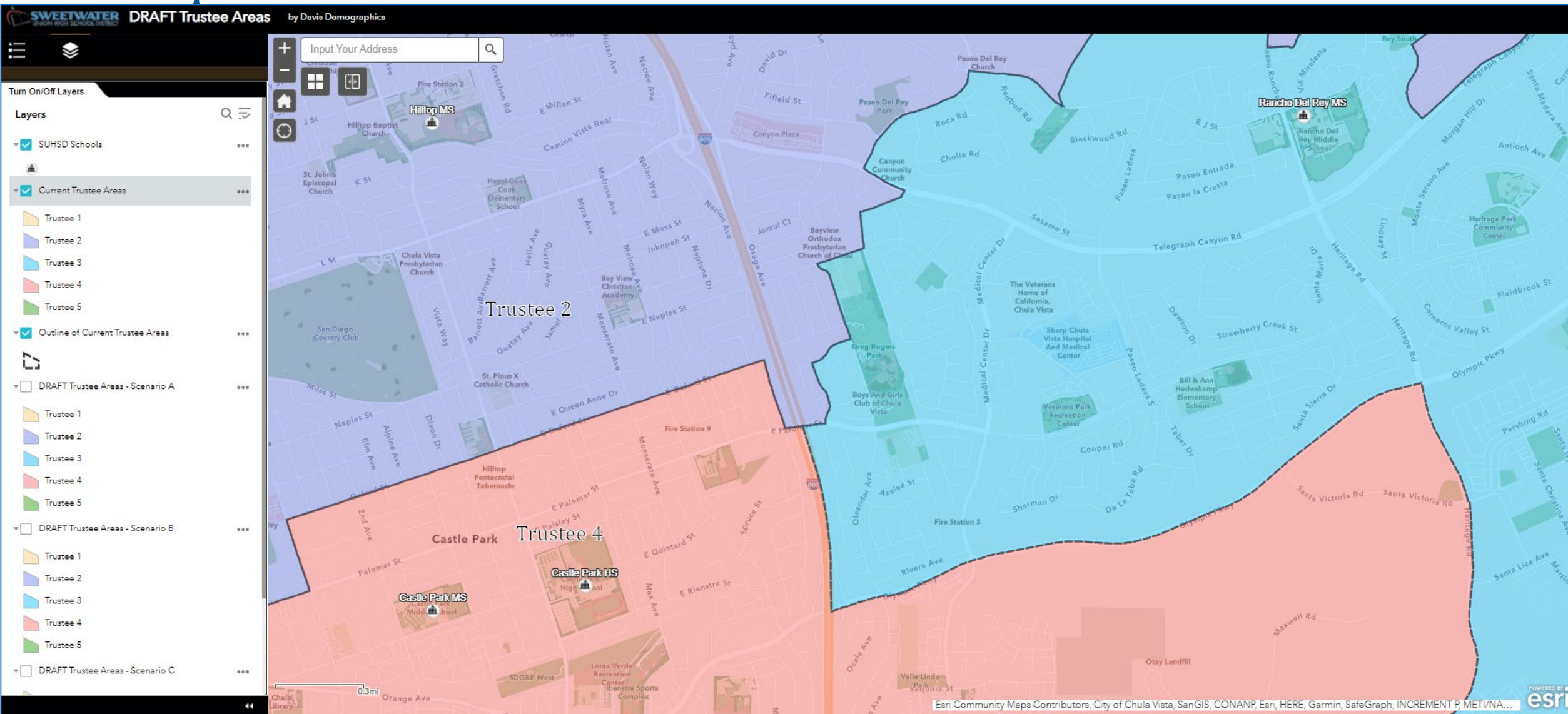
Davis Demographics Services

- Create 2-3 scenarios for Board
 - Create Web-based map for public information
 - Create PDF Maps for distribution
- Available to virtually attend/present at public outreach meetings
- Potentially create 1-2 additional Scenarios
 - With web-based and PDF maps
 - If directed by Board
 - Based upon Board and public feedback
- Provide GIS data to District to submit to L.A. County

Scope of Work



Scope of Work



First Step Tonight

- Input from the Board
 - Direction, ideas, requests
 - Information about Areas of Interest

- Input from the public
 - Provided during the public comment portion of the meeting

Questions

