



Leading Forward 2021-2022

Lockhart ISD COVID-19 Response Plan

Leading Forward in 2021-2022

Last year, school districts faced incredible challenges in planning for school while just beginning to learn about COVID-19. In planning for 2021-2022, we have the benefit of several things we did not have last year. We have gained experience in effective cleaning and disinfection protocols. We have an understanding of effective hygiene practices that help decrease the spread. Additionally, we have access to a vaccine for those 12 years of age and older that has demonstrated success in significantly reducing the risk of hospitalizations and death from COVID-19, and children younger than 12 are expected to have access to it this winter.

Still, with the increase of new variants that are more contagious, the school district remains committed to ensuring the safety of staff and students and protecting the continuity of learning and services.

On September 4, 2021, the Lockhart ISD Board of Trustees approved the requirement of the use of masks or face coverings for all students, staff, parents, and visitors while inside Lockhart ISD buildings and buses. The action also authorized the superintendent to implement regulations to facilitate this mandate, including appropriate exemptions due to an individual's age, disability, or documented medical condition. Lockhart ISD has created a response to COVID-19 matrix that applies when the positivity of Caldwell County falls below 25%. This allows the district to follow protocols based on the percentages at each campus and act accordingly. See [LISD COVID-19 Response Matrix](#)

Lockhart ISD continues to monitor guidelines from the Centers for Disease Control and Prevention (CDC), the Office of the Governor, Texas Department of State Health Services, and Texas Education Agency. Also, we continue to remain in contact with our local and county officials to track cases in our community. Our protocols and practices may change during the school year based upon changing circumstances and new federal, state, or local guidelines. When changes occur, we will update the guidance in this document.

We are excited to have all of our students for 100% on-campus learning this year. After such a difficult year last year, we look forward to helping students transition back to school and provide them the support and excellent learning experiences they deserve to fully thrive.

If you have any questions about this plan or any other concerns, please feel free to email LISDCovidQuestions@lockhart.txed.net or call 512-398-0000.



Health Services



The role of LISD school nurses is critical especially during this pandemic. They deliver health care services in an educational setting, manage health clinic operations, monitor the trends in symptoms and illnesses campus-wide, and provide guidance to leadership and staff on appropriate practices to support student and staff health. All nurses will continue to work in partnership with community health care providers, Texas Department of Health and Human Services, Texas Education Agency, and the Centers for Disease Control and Prevention (CDC).

- To prevent exposure to infectious diseases for vulnerable students receiving other medical treatments, all student visits to the Health Office will be triaged.
- Care that can be provided in the classroom will be handled there (minor first aid).

Communication Regarding COVID-19

Lockhart ISD understands the foundation of a healthy partnership is trust, and the district works hard to build and maintain staff, parent, and community trust through providing frequent, timely, and accurate information. We support equitable access to important information by ensuring our communication is provided in both English and Spanish, matching the language preferences indicated by parents.

Communication is especially important during this global pandemic. To help you understand what to expect, we would like to provide the guidelines the district and campuses will use to initiate COVID-19 related communication with parents during the school year.

To ensure our ability to communicate important information with you, it is critical now, to provide your updated phone number and email address. Please note that if you opt to block or unsubscribe from emails, this will prevent you from receiving emergency information. Contact your child's campus to update your contact information.

Lockhart ISD will continue to maintain a district dashboard to allow for transparency of



COVID-19 cases in our schools and district. It is accessible at www.lockhartisd.org under “Quick Links.” In situations in which an individual in a class or student activity group experiences a **lab-confirmed case of COVID-19**, the principal or designee will send a letter to any individuals who may have had exposure.

Health & Safety Protocols



Masks and Face Coverings Required

Lockhart ISD uses a [COVID-19 Response Matrix](#) to guide the district on protocols when the positivity rate of Caldwell County falls below 25%. If the positivity rate of Caldwell County rises above 25%, then Lockhart ISD requires the use of masks or face covering for all students, staff, parents, and visitors while inside Lockhart ISD buildings and buses. This requirement takes into consideration appropriate exemptions due to an individual's age, disability, or documented medical condition.

Protocols for Screening and Isolation on Campus

All students should be screened by their parents daily before coming to school. Staff will screen themselves for COVID-19 symptoms daily. The self-screening should include taking your own temperature. Those who have COVID-19 symptoms in a way that is not usual to them should refer to see the protocol on page 5 regarding “When an individual has symptoms of COVID-19 and who has not been tested.”

COVID-19 Symptoms

In evaluating whether an individual has symptoms consistent with COVID-19, consider if the individual is experiencing any of the following symptoms **in a way that is not usual for them.** (Please note that students with fever will always be required to remain at home.)

Temperature of 100.0 or greater, without the use of fever-reducing medications (Tylenol, Advil, etc.)

Loss of taste or smell

Difficulty breathing

Fatigue

Chills

Congestion or runny nose



Shaking or exaggerated shivering
Significant muscle pain or ache
Diarrhea
Cough
Shortness of breath
Headache
Sore throat
Nausea or vomiting

Protocols for different scenarios in which students have a diagnosis, exposure, or symptoms of COVID-19

Level 1 Screening Protocols:

Are you experiencing high risk symptoms?

- Temperature of 100.0 or greater
- Significant body aches / chills / chest pain
- Cough (new, changed, or worsening)
- New onset of severe headache
- Loss of taste or smell
- Shortness of breath, difficulty breathing

If you have one or more high risk symptoms:

- Exclude from campus per Lockhart ISD & Department of State Health Services guidelines
- Recommend for evaluation by healthcare provider and testing

When can you return?

The individual must remain home until the following conditions have been met:

- At least 24 hours have passed since fever of 100.0 or greater, without the use of fever-reducing medications (Tylenol, Advil, etc.);
- Improvement of symptoms; and
- At least 10 days have passed since symptoms first appeared.



An individual **may** return to school before completing the stay-at-home period under the following conditions:

A note is obtained from a medical provider clearing the individual to return based on an alternative diagnosis or stating illness is not COVID-19 related; or

Obtain a diagnostic COVID PCR test (at a physician's office or approved testing location) that comes back negative for COVID-19. *Antigen (rapid) test will not be accepted.

Are you experiencing mild risk symptoms?

- Runny nose / nasal congestion
- Sore throat
- Fatigue
- Vomiting / Diarrhea / Nausea
- Mild Headache
- Cough / chest tightness (student with documented allergy / asthma plan)

I have two or more mild risk symptoms:

Follow symptomatic protocol for high risk symptoms.

I have one mild risk symptom:

If unvaccinated and has had close contact (within 6 feet for 15 minutes or more) with a person infected with COVID-19, follow symptomatic protocol for high risk symptoms.

If the individual has NOT had close contact with a person infected with COVID-19:

- Nurse evaluates/treats in clinic
- If symptoms resolve, return to class

If no improvement with rest and intervention at school, OR based on the nurse's clinical judgment:

- **Call parent for pickup**
- Exclude from campus for 24 hours



If no improvement within 24 hours, follow the symptomatic protocol for high risk symptoms.

Level 2 & 3 Screening Protocols:

When an individual has tested positive for COVID-19 and has symptoms: Any individuals who are lab-confirmed to have COVID-19 must stay at home throughout the infection period, and they cannot return to campus until the campus screens the individual to determine all of the below conditions for campus re-entry have been met:

1. at least 24 hours have passed since recovery (resolution of fever without the use of fever-reducing medications);
2. the individual has improvement in symptoms (e.g., cough, shortness of breath); and
3. at least ten days have passed since symptoms first appeared.

When an individual has tested positive for COVID-19 and has NO symptoms: If an individual tests positive for COVID-19, but has no symptoms, the individual may return to school after 10 days have passed since the date the individual was tested as long as the individual continues to have no symptoms. If a student develops symptoms after testing positive, the student must then follow the protocol for students who have tested positive and have symptoms.

When an individual has symptoms of COVID-19 and has not been tested: If an individual has symptoms that could be COVID-19, the individual must remain home until the following conditions have been met:

At least 24 hours have passed since fever of 100.0 or greater, without the use of fever-reducing medications (Tylenol, Advil, etc.);

Improvement of symptoms; and

At least 10 days have passed since symptoms first appeared.

An individual may return to school before completing the stay-at-home period under the following conditions:



A note is obtained from a medical provider clearing the individual to return based on an alternative diagnosis or stating illness is not COVID-19 related; or

Obtain a diagnostic COVID PCR test (at a physician's office or approved testing location) that comes back negative for COVID-19. Testing locations can be found at this link: <https://tdem.texas.gov/covid-19/> *Antigen (rapid) test will not be accepted.

When an individual has had an exposure in the school setting with an individual who has tested positive for COVID-19: The Center for Disease Control and Prevention (CDC), recommends that people who are fully vaccinated do **NOT** need to quarantine after contact with someone who has COVID-19 **unless** they have symptoms. Vaccinated individuals are recommended to monitor for symptoms and test 3-5 days after exposure. Anyone that is unvaccinated and has had an exposure with someone with COVID-19 is recommended to self-quarantine for ten days and monitor for symptoms. While quarantine is recommended for unvaccinated individuals, it is not required by our district at this time.

Parents: Please notify your child's teacher and the campus nurse if you plan to keep your student home to quarantine so that we may make alternate arrangements for learning.

If an individual at any time during the two weeks following exposure to COVID-19 develops symptoms or tests positive for COVID-19, then they should notify their child's campus nurse. Likewise, staff should notify their supervisor and follow the relevant protocol (see page 5).

When an individual has had close contact with an individual who has tested positive for COVID-19:

- The Center for Disease Control and Prevention (CDC), recommends that people who are fully vaccinated do **NOT** need to quarantine after close contact with someone who has COVID-19 **unless** they have symptoms. If an individual at any time during the two weeks following exposure to COVID-19 develops symptoms or tests positive for COVID-19, then they should notify their child's campus nurse. Likewise, staff should notify their supervisor and follow the relevant protocol (see page 5).
- An unvaccinated individual remains at home for 10 days after the last close contact. Upon return to school, they must continue to monitor daily for symptoms through day 14. If an individual at any time during the two weeks following exposure to COVID-19 develops symptoms or tests positive for COVID-19, then they should notify their child's



campus nurse. Likewise, staff should notify their supervisor and follow the relevant protocol (see page 5).

If a person who lives in their home tests positive for COVID-19, see **when an individual reports a person they live with has tested positive for COVID-19 (see below)**.

When an individual reports a person they live with has tested positive for COVID-19: If a person who lives in their home tests positive for COVID-19, the unvaccinated exposed individual must remain at home for 10 days and monitor for COVID-19 symptoms. If the unvaccinated individual lives with someone who is infected then the 10 day quarantine begins when the isolation period of the infected individual ends. If the unvaccinated individual tests positive for COVID-19 or develops symptoms, follow the protocol for when an individual tests positive above.

(Per CDC Updated Guidance on March 8, 2021) A vaccinated individual does not need to stay at home following close contact exposure to a test-confirmed individual if the following conditions are true:

- The exposed individual is fully vaccinated (at least two weeks have passed since receiving the second dose of a two-dose vaccine or the first dose of a single-dose vaccine)
- Have not experienced any COVID-19 symptoms following close contact exposure to a test-confirmed individual.

When an individual is symptomatic and receives a positive antigen (rapid) test and a negative NAAT(PCR) test: The individual will need to receive a total of 2 negative NAAT(PCR) tests 24 hours apart.

When an individual has tested positive for COVID-19 within the last 90 day period and has an exposure to COVID-19: If an individual who has tested positive for COVID-19 in the previous 90 days has an exposure to COVID-19, the individual does not need to quarantine as long as they are not experiencing symptoms. If the individual tests positive for COVID-19 or develops symptoms, follow the protocol for **when an individual tests positive for COVID-19** and/or the protocol for **when an individual has symptoms of COVID-19**.

IF YOU SUSPECT YOU HAVE COVID-19, PLEASE SEEK MEDICAL ATTENTION.



Counseling Services

Students:

School counselors provide valuable support and services to students, ensuring the needs of the "whole child" are met to help them truly thrive. Whether students are on campus or participating in distance learning, our counselors will continue to provide critical support to our Lions.

- Counselors/Administrators will complete a risk assessment and develop a positive support plan for students (especially at-risk students) in order to provide appropriate resources and support.
- Counselors will regularly communicate with parents/guardians and students in order to share social-emotional learning resources, strategies, etc.
- Counselors will regularly be available, communicate with, and intervene on the behalf of families and students in need.
- Counselors will coordinate with classroom teachers to provide on-campus instruction as needed regarding individual planning and guidance curriculum.
- Counselors will support classroom teachers in providing instruction (asynchronously or synchronously) in alignment with character education/social emotional, and comprehensive counseling programming and other state-mandated topics as needed.
- College Counselors will provide information on graduation, post-secondary opportunities, FAFSA, ApplyTexas, etc., via text, email, or website..
- Families and Students may access a counselor at their individual campuses.

Employees:

Any employee that has emotional distress concerning COVID-19 is welcome to contact our employee confidential Employee Assistance Program (EAP), which has no cost to employees. Contact your EAP: Call: (866) 327-2400; Web: www.deeroakseap.com; Email: eap@deeroaks.com





LEVEL 1 SYMPTOM MAP

Are you experiencing any of the following symptoms that are NOT normal for you?

Are you experiencing *high risk* symptoms?

- Temperature of 100° or greater
- Significant body aches / chills / chest pain
- Cough (new, changed, or worsening)
- New onset of severe headache
- Loss of taste or smell
- Shortness of breath / difficulty breathing

I have one or more *high risk* symptoms.



WHEN CAN YOU RETURN?

Exclude from campus until ALL THREE of these criteria are met:

- At least 10 days have passed since symptom onset
- 24 hours fever-free without the use of fever-reducing medication
- Improved symptoms

Alternative entry requires either:

- Medical professional's note clearing the individual to return based on alternative diagnosis

- Acute infection test that comes back negative for COVID-19. (A negative antigen test is not sufficient to rule out COVID-19.)

If an individual has symptoms, but they were not evaluated by a medical professional, the 3-step criteria above must be met; no medical professional documentation required to return to school.

LOCKHART ISD COVID-19 Level 2 & 3 Screening Tool for Students, Staff, and Visitors

If an individual has symptoms for COVID-19 that are unusual for them, the individual must remain home until the following conditions have been met:

- At least 24 hours have passed since fever of 100.0 or greater, without the use of fever-reducing medications (Tylenol, Advil, etc.);
- Improvement of symptoms; and
- At least 10 days have passed since symptoms first appeared.

An individual may return to school before completing the stay-at-home period under the following conditions:

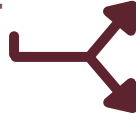
- A note is obtained from a medical provider clearing the individual to return based on an alternative diagnosis or stating illness is not COVID-19 related; or
- Obtain a diagnostic COVID PCR test (at a physician's office or approved testing location) that comes back negative for COVID-19.

** Antigen (rapid) test will not be accepted.

Are you experiencing *mild risk* symptoms?

- Runny nose / nasal congestion
- Sore throat
- Fatigue
- Vomiting / diarrhea / nausea
- Mild headache
- Cough / chest tightness (student with documented allergy / asthma plan)

I have two or more *mild risk* symptoms.



I have one *mild risk* symptom.

I HAVE had close contact (within 6 feet for 15 minutes or more) with a person infected with COVID-19.

I have NOT had close contact (within 6 feet for 15 minutes or more) with a person infected with COVID-19.

WHEN CAN YOU RETURN?

If no improvement with rest and intervention at school, OR based on nurse's clinical judgment*:

- Call parent for pickup
- Exclude from campus for 24 hours

If no improvement within 24 hours at home...

*** All clinic visits related to student illness, injury, rash, or other personal situations will be handled on a case-by-case basis at the discretion of the campus nurse's clinical judgment and in accordance with the DSHS Communicable Disease Chart rules for exclusion.

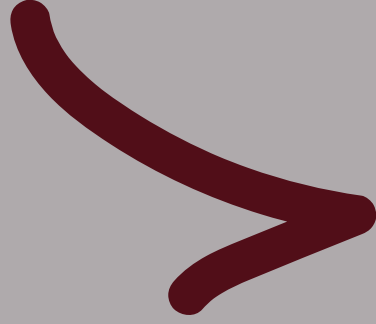
Levels 2 & 3 COVID-19 Student Symptom Map - 2021-2022



SCREENING REQUIREMENTS FOR COVID-19

Parents must screen their children symptoms of COVID-19 in a way that is not usual for them prior to coming to campus:

- Temperature of 100.0 or greater
- Loss of taste or smell
- Cough
- Difficulty Breathing
- Shortness of breath
- Fatigue
- Headache
- Chills
- Sore throat
- Congestion or runny nose
- Shaking or exaggerated shivering
- Significant muscle pain or ache
- Diarrhea, nausea, or vomiting



A student has symptoms of COVID-19 and has not been tested.

A student must remain home until the following conditions have been met:

- At least 24 hours have passed since fever of 100.0 or greater, without the use of fever-reducing medications (Tylenol, Advil, etc.);
- Improvement of symptoms; **and**
- At least 10 days have passed since symptoms first appeared.

A student may return to school before completing the stay-at-home period under the following conditions:

- A note is obtained from a medical provider clearing the student to return based on an alternative diagnosis or stating illness is not COVID-19 related;

or

- Obtain an acute infection test * (at a physician's office or approved testing location) that comes back negative for COVID-19.

***Antigen (rapid) test will not be accepted.**

This document highlights the district's protocol for decisions regarding individuals diagnosed with or presenting symptoms of COVID-19.

The Leading Forward COVID-19 Response Plan and LISD COVID-19 Dashboard are listed under "Quicklinks" on the district website. If you have questions, feel free to email LISDCovidQuestions@lockhart.txed.net.

A student has tested positive for COVID-19 and has NO symptoms.

- If a student tests positive for COVID-19, but has no symptoms, the student may return to campus after 10 days have passed since the date the individual was tested as long as the individual continues to have no symptoms.
- If a student develops symptoms after testing positive, the student must then follow the protocol for students who have tested positive and have symptoms.

A student has tested positive for COVID-19 and has symptoms.

The student remains home until the following conditions have been met:

- At least 24 hours have passed since fever 100.0 or greater, without the use of fever-reducing medications (Tylenol, Advil, etc.)
- Improvement of symptoms
- At least 10 days have passed since symptoms first appeared

A student has had close contact with an individual who has tested positive for COVID-19.

- Per CDC, a vaccinated student who is not showing symptoms does not have to quarantine.
- An unvaccinated student remains at home for 10 days after the last close contact. Upon return to school, they must continue to monitor daily for symptoms through day 14.
- If a student lives with someone who is infected and cannot avoid close contact with this person, then the quarantine is extended to an additional 10 days from when the isolation period of the infected individual ends.
- If any student tests positive for COVID-19 or develops symptoms, follow the protocol above.

A student reports a person who lives in their home was exposed to an individual who tested positive for COVID-19.

- Student may return to school if the person who lives in their home has no symptoms and has not tested positive for COVID-19.
- If the person who lives in their home develops symptoms or tests positive for COVID-19, follow the protocol for students who had close contact with an individual who has tested positive for COVID-19.

If you suspect you could have COVID-19, please seek medical attention.