



Crabtree, Rohrbaugh & Associates

LAMPETER-STRASBURG SCHOOL DISTRICT

EARLY CHILDHOOD CENTER UPDATE September 21, 2020

AGENDA

- OVERVIEW/UPDATE OF PROJECT STATUS
- SITE
- OPTION DIAGRAM
- NEXT STEPS



GUIDING PRINCIPLES

All options will be evaluated with Building Goals as outlined in the District's Comprehensive Plan, Mission Statement, Vision Statement and Shared Values

- ❖ **Safety and security of all students, staff and community**
- ❖ **Fiscally responsible to our Students, Community and Key Stakeholders**
- ❖ **Support 21st Century Learners with appropriate tools, resources and learning environments**
- ❖ **Equity across all buildings and students – today, tomorrow and into the future given growth projections**
- ❖ **Code compliance (i.e. ADA, Building Codes)**

NEW EARLY CHILDHOOD/KINDERGARTEN FACILITY OPTION



Lampeter-Strasburg School District

District Wide Feasibility Study Updates

Updated: 1/19/2020

New Early Childhood/Kindergarten Center

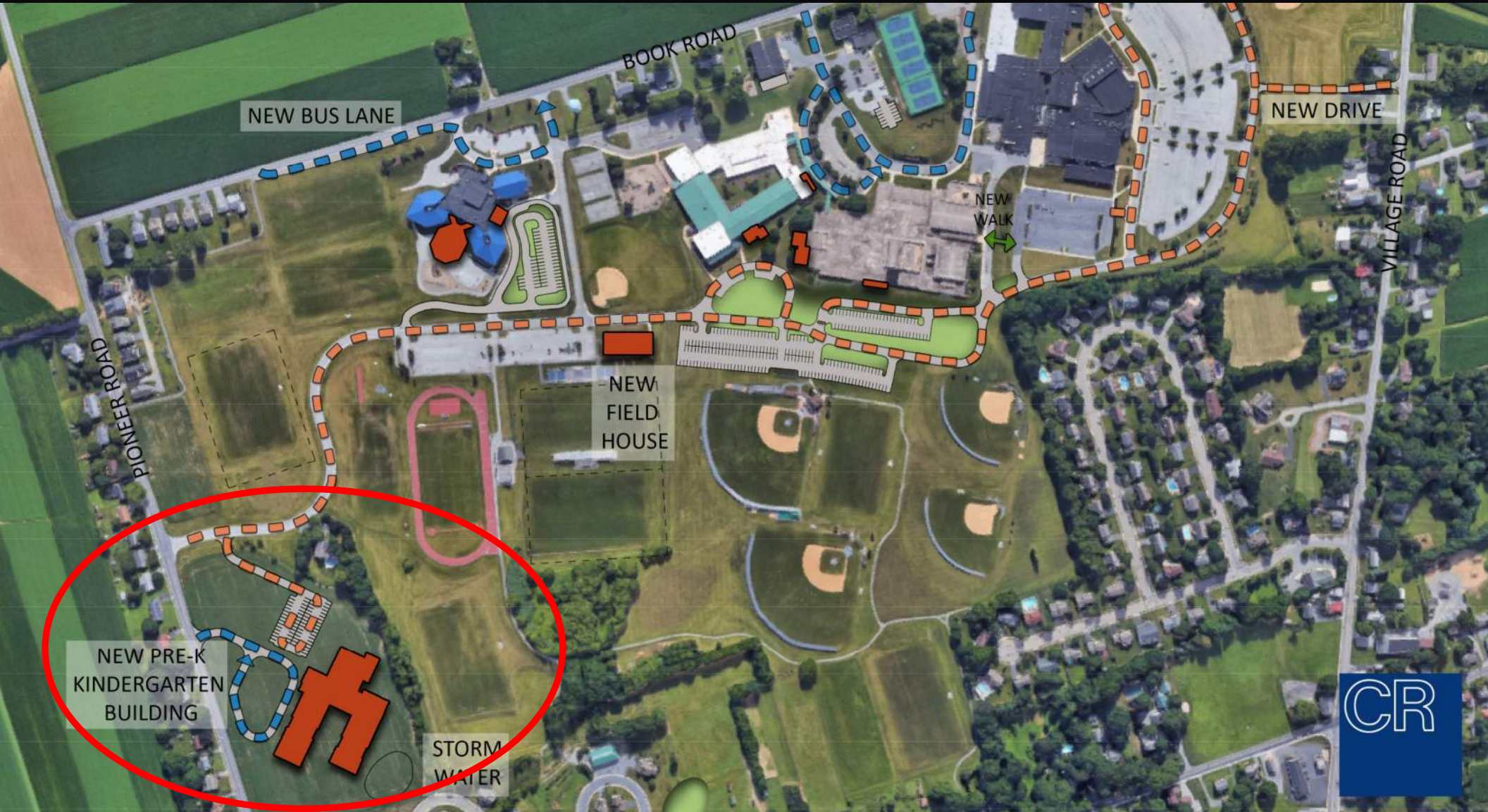
OPTION MATRIX		ESTIMATED TOTAL PROJECT COSTS		BUILDING AREA SUMMARY		
PROJECT OPTION		RANGE		EXISTING SF	PROPOSED SF	TOTAL SF
Total Construction Costs		\$ 11,820,251	\$ 13,365,307	0	47,000	47,000
*Site Costs (included in cost above)		\$ 2,298,420	\$ 2,528,262	0	0	0



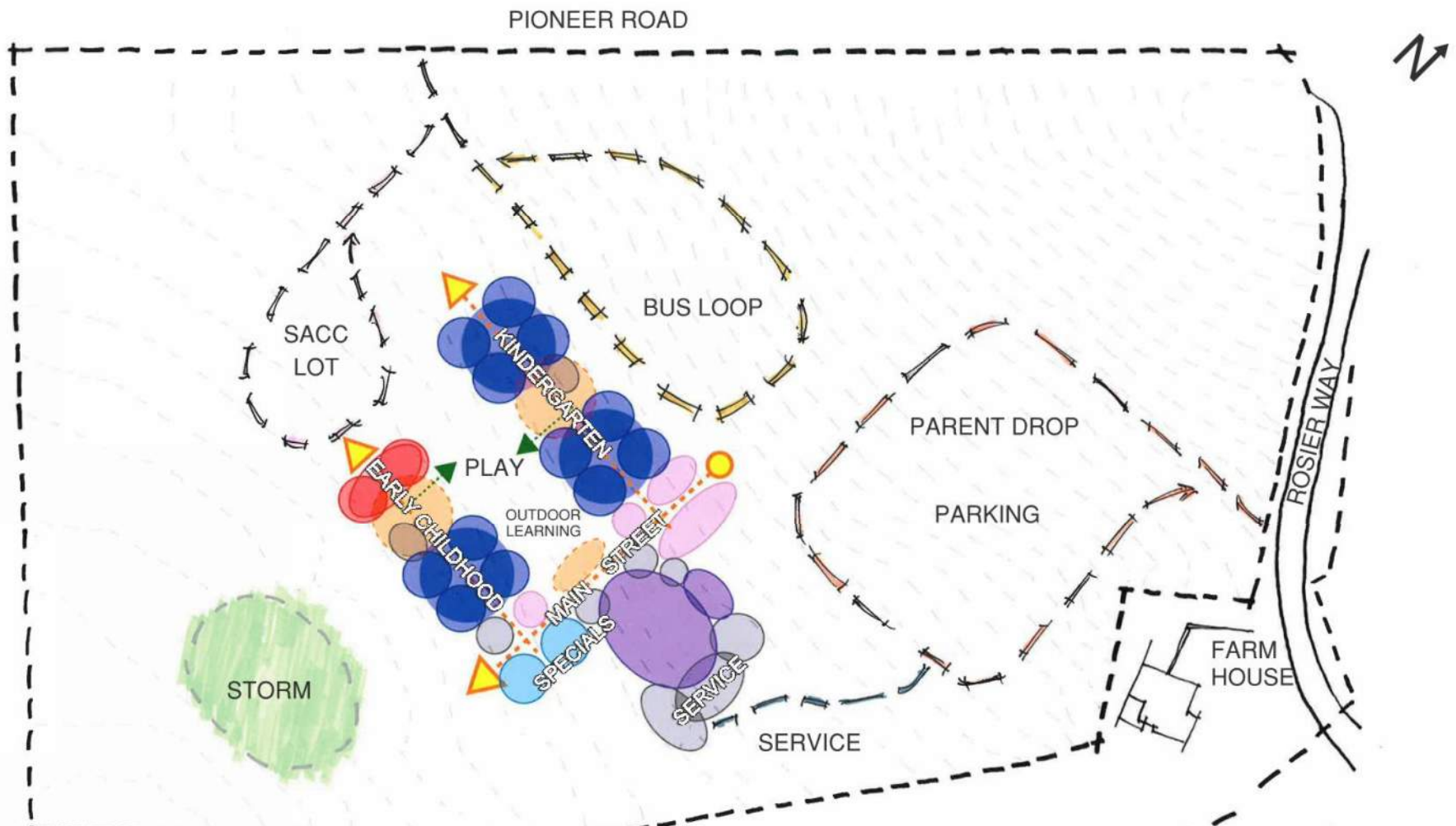
New Early Childhood/Kindergarten Center

- Building Capacity of 315 -350
- Site reviewed with Architerra

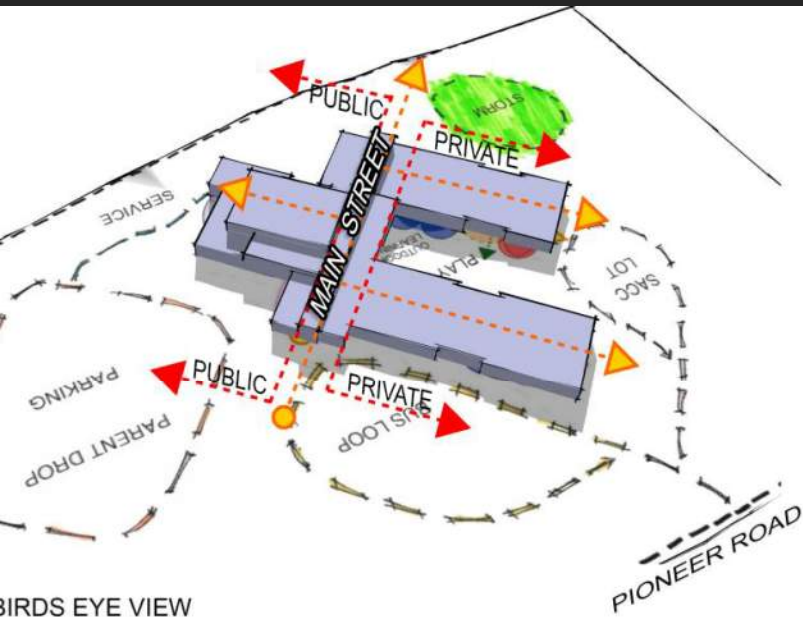
PROPOSED SITE CONCEPT



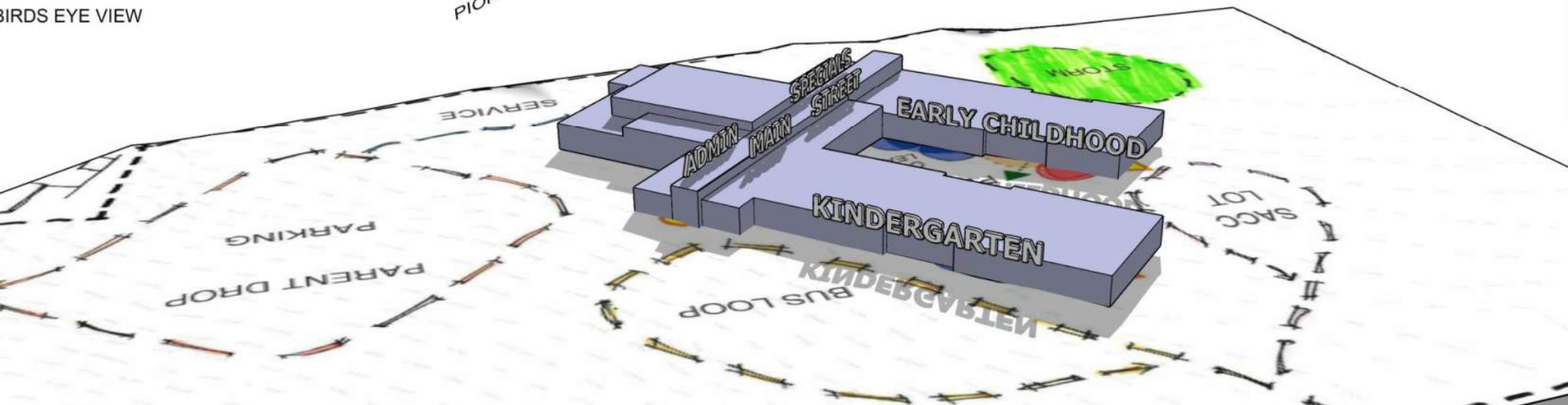
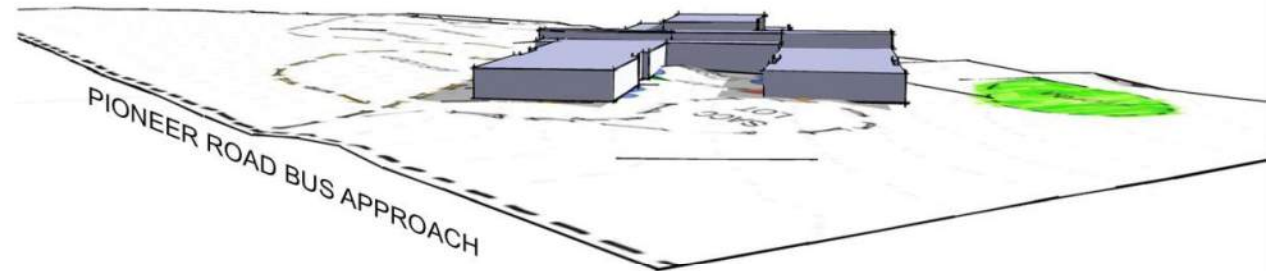
PROPOSED SITE CONCEPT PLAN - PRELIMINARY



BUILDING MASSING

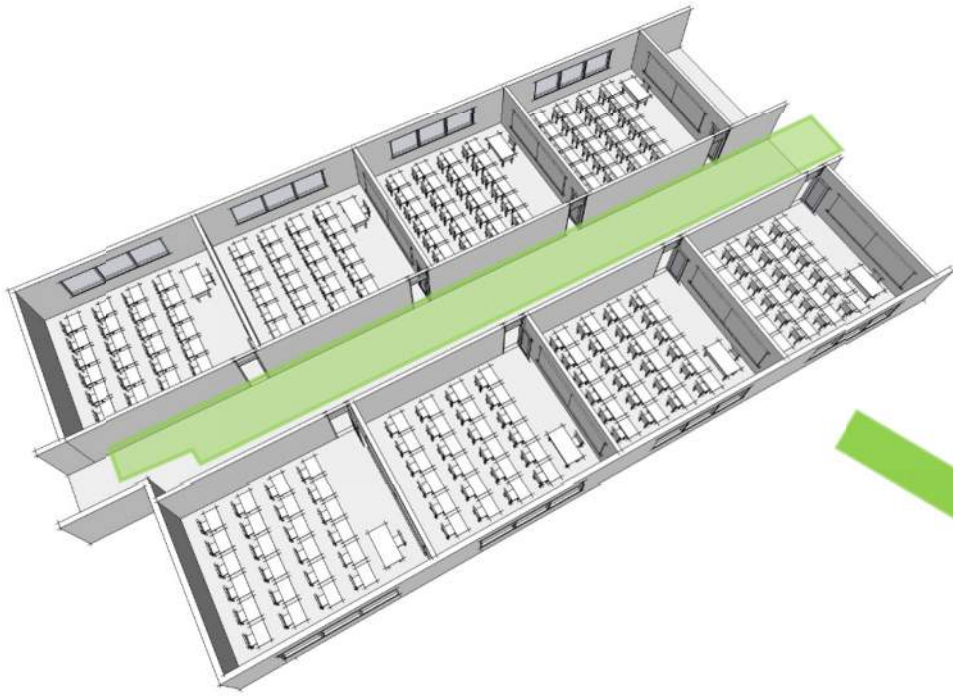


BIRDS EYE VIEW



PROGRAMMING ANALYSIS

TRANSFORMATION *through renovation*



THEN

21ST CENTURY LEARNING

Mass production of education

One size fits all

Learning environment had no impact on outcomes

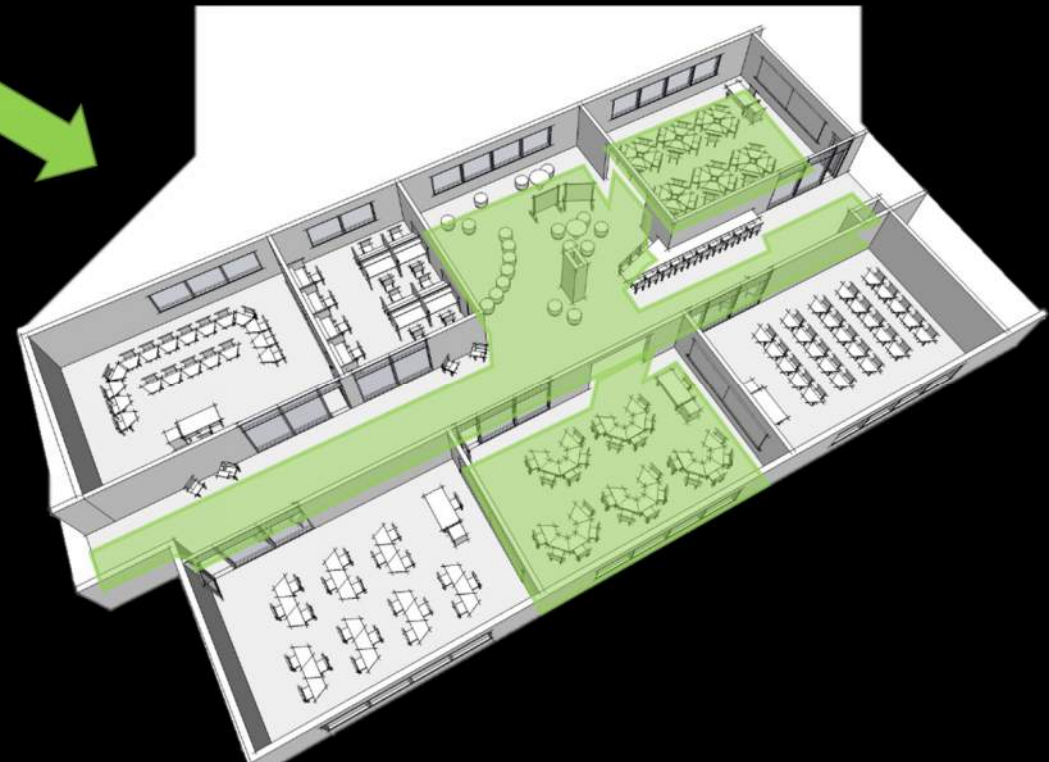
No foreseeable need for change = fixed

NOW

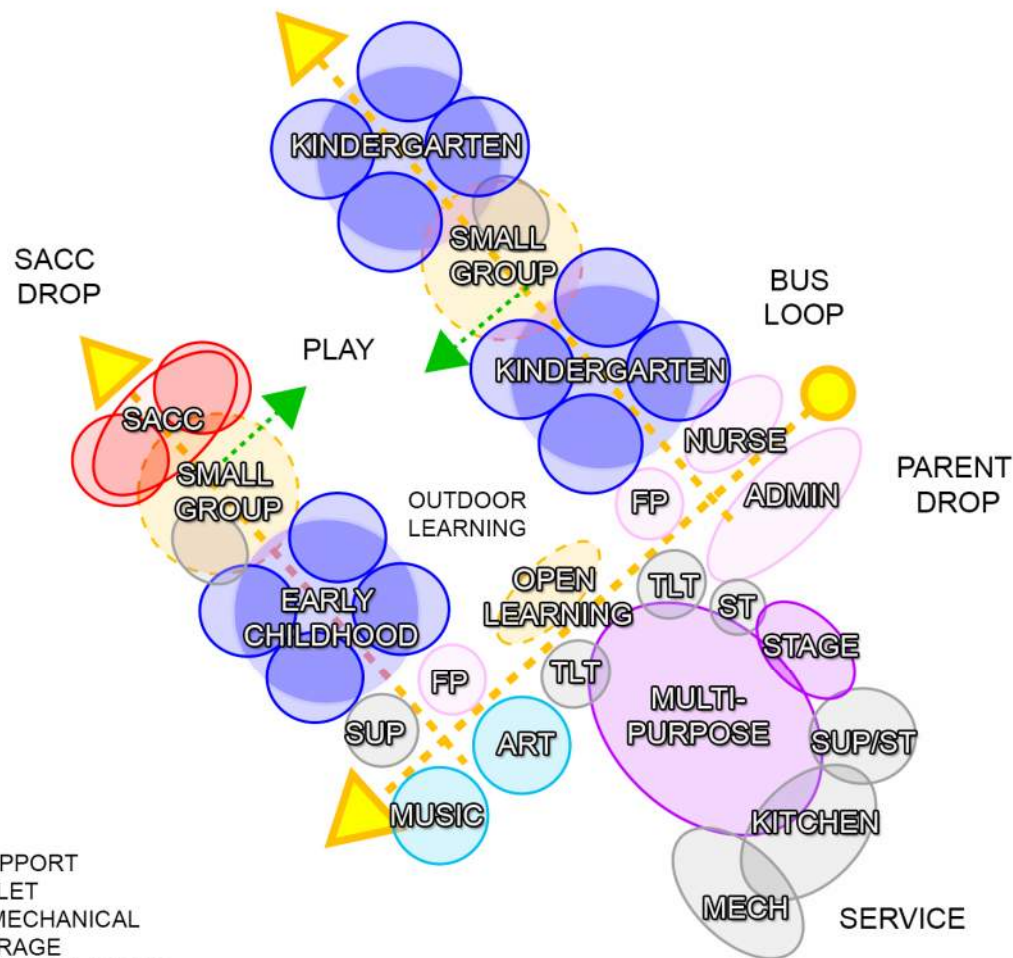
Mass customization of education

Learning environment impacts outcomes

Change = flexibility



CONCEPT DIAGRAM

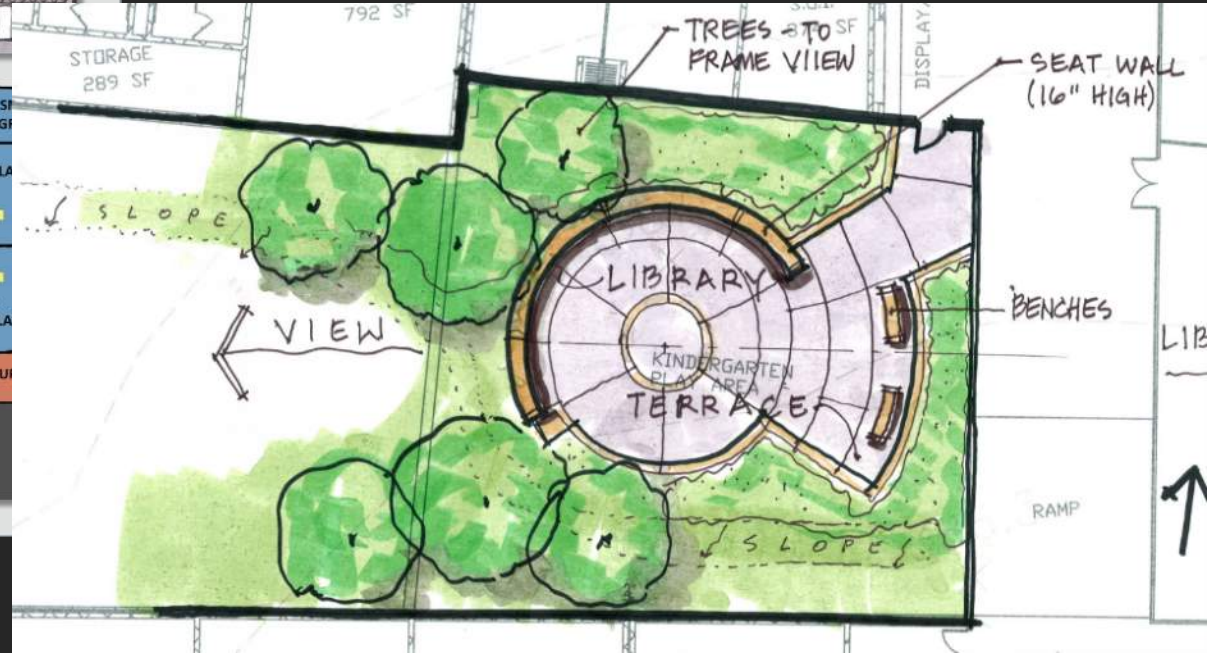
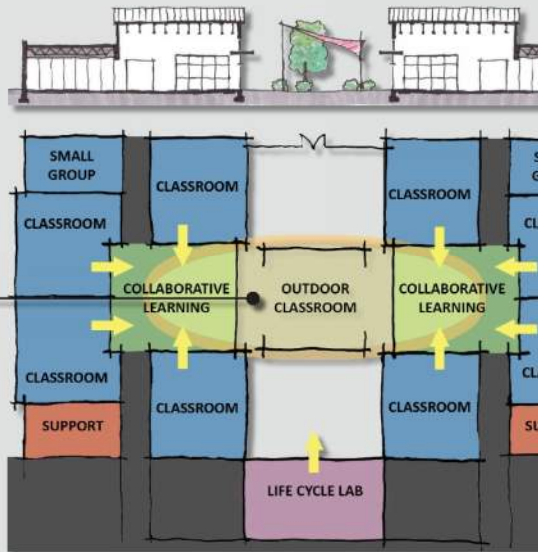
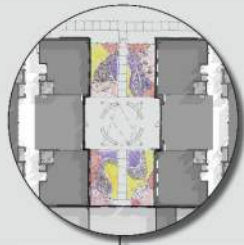


- ❖ Two distinct learning wings with shared specials, play, outdoor learning, administration and support.
- ❖ Efficient layout with potential for long term growth if required.
- ❖ Public and private function separation, parking adjacent to multi-purpose.
- ❖ Small group and collaborative learning environments planned into academic wings.
- ❖ Service function away from protected outdoor play and learning spaces.

LEARNING EXPERIENCE



LEARNING ENVIRONMENT



NEXT STEPS

- SITE ANALYSIS/BUILDING LOCATION
- SCHEMATIC FLOOR PLANS
- SCHEMATIC ELEVATIONS
- PRELIMINARY COST ESTIMATE
- PRESENTATION TO THE FULL BOARD



Crabtree, Rohrbaugh & Associates
www.cra-architects.com