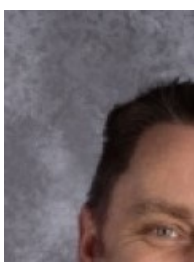




Rockwell Elementary News



Principal's Letter

December 3, 2021

Differentiating to Meet the Needs of All Learners....Introducing Beagle Blocks!

Dear Rockwell Families,

Greetings from campus, and welcome to the home stretch of 2021! I hope this message finds you well, and that you had a wonderful Thanksgiving last week. My family is from Oregon, and after a brief commute down I-5, I enjoyed a few days with family, discussing the merits of the Ducks' and Beavers' football performance this year (the Huskies and Cougs rarely come up down in those parts 😊). Now we're in the home stretch of the year, and I have a feeling the next two weeks will pass in the blink of an eye.

Families, I'm excited to share with you the next step in our Inclusion and Multi-Tiered Systems of Support work: intervention blocks. We are in the process of adding intervention time, or "Beagle Blocks" to each grade in our school. All grades will have a scheduled time to provide additional literacy or mathematics support specific to the needs of the learners in each class. Our goal is that all students have access to grade level curriculum and beyond, and Beagle Block

provides time to build upon what they are learning in their core math and literacy time, a concept we refer to as “core plus more.” During Beagle Block, students might work with their teacher in small groups, or engage in an extension activity. They might receive Safety Net or Multi-Lingual Learner or Specially Designed Instruction. As current health requirements change, this may also include ‘walk to learn’ opportunities, allowing students from different classes to work together. Even in a more typical school year students are unique in their academic and behavior strengths and needs, and we are excited that data-informed intervention blocks will be valuable time to ensure each child is progressing to the high standards we expect.

I’m proud of our staff for the hard work they’ve put into learning about and developing these Beagle Blocks, and I’m excited to see the positive effects of these intervention periods in the months and weeks to come. I’ll discuss Beagle Blocks in greater detail during the next [Coffee with the Principal](#) on December 10th (9:00 A.M. via Teams), and as always, please feel free to call or email if you have any questions as well.

Take care, enjoy the weekend, and go Ducks...I mean Beavers....I mean Huskies...I mean Cougs!! Go, everyone!

Kind Regards,

A handwritten signature in black ink, appearing to read 'Mike', with a stylized flourish at the end.

Michael Clark
Principal



Grandfather and Snowman, Norman Rockwell
(Saturday Evening Post: December 20, 1919)

Rockwell Updates

Virtual Coffee with the Principal

You are cordially invited to our second virtual "Coffee with Mr. Clark" on Friday, December 10, at 9:00 AM via Teams. All families are welcome, and the topic for our coffee will be an overview of our work around Multi-Tiered Systems of Support, including our brand new "Beagle Blocks." We discuss how we differentiate our instruction and behavioral supports to meet the needs of all our learners. To join the meeting, please click on the link below at 9:00 AM on the 10th:

[Link to Coffee with Mr. Clark at 9:00 AM on December 10](#)

Take care, and I look forward to seeing you for remote pastries and good conversation on the 10th!

-Mr. Clark



PurposeFULL
People

December Character Trait of the Month: CREATIVITY

Creativity is more than just making things or creating art – it is about exercising our imagination to help make the world better! Creativity is defined as “Using your imagination to create something or solve a problem.” One of the best things about being a human being is our ability to imagine! We get this cool part of our brain that allows to not just think about survival, but also about sparkly space pigeons or colorful caterpillars or a cardboard box that is secretly a rocket ship. At this young age, kids regularly use their Creativity to entertain themselves (and us!) with all the wacky and wonderful ways they view the

world. Let's make sure they never lose that curiosity! It is that same imagination that makes a sandbox into the moon that is capable of imagining the world's problems as opportunities for new, bold, innovative solutions. The only way we change our world is to have the courage and creativity to think different!



FROM THE OFFICE:

We are in the rainy season in Washington. We are a school that goes out to recess, we are using our covered areas for lunch so please consider the following when sending your child to school.

1. Wear warm layers.
2. Consider waterproof shoes.
3. Wear waterproof jackets/coats.
4. Pack a set of dry clothes (include masks/socks). We don't have extra changes of clothes and will not be sending students to the health room to change.
5. An umbrella goes a long way to keep your child dry.

Some changes we are making to recess to keep students drier.

1. Banana tree, sand field and sand pit are closed for now.
2. Please stay off the grass (it is wet and muddy), use the paved paths instead.
3. Little Toy, Big Toy and blacktop will be open.
4. We will have some undercover activities during the last recess of the day.



LWSD Updates

Highly Capable Universal Screening Update for 1st Grade

In order to decrease the number of assessments students are given, LWSD first grade students in LWSD will be universally screened using FastBridge for reading and math. Students that meet the screening criteria (85th percentile NPR in each area) will be invited to continue in the highly capable eligibility process. The CoGAT screener will not be administered during the 2021-22 school year.

Too Sick for School

One of the best ways to avoid community transmission of COVID-19, and other infectious illness, is to stay home when you are sick. Students and school employees who have symptoms of infectious illness, such as influenza (flu) or COVID-19 should stay home and seek medical evaluation, which may include testing for COVID-19 and other respiratory infections.

While the school will no longer require an attestation form at the start of each day, we ask families to please answer the following questions at home before deciding to send your child to school. If you answer "YES" to any of the following questions, keep your student home and contact your school.

1. Has your student been in close contact with anyone with confirmed COVID-19?
2. Does anyone in your household have COVID-19 like symptoms and/or is anyone in your household being tested for COVID-19?

3. Has your student or anyone in your household had a positive COVID-19 test for active virus in the past 10 days?
4. Within the past 14 days, has a public health or medical professional told your student to self-monitor, self-isolate or self-quarantine because of concerns about COVID-19?

For more information, please visit our “Too Sick for School Webpage”: Too Sick for School - Lake Washington School District (lwsd.org)

SUBSTITUTES NEEDED: WORK IN YOUR OWN COMMUNITY!

We have immediate openings for all substitute teachers and classified substitute positions in LWSD!

Apply at LWSD Frontline Teacher Substitutes to become a Substitute Classroom Teacher.

Apply at LWSD Frontline Classified Substitutes to become a Substitute Instructional Assistant, Paraeducator, or Office Professional.

Hourly rates:

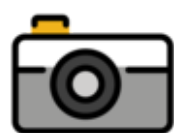
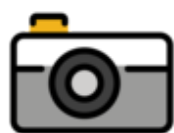
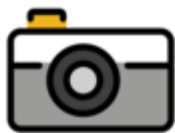
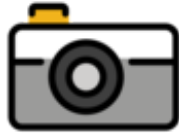
- Substitute Teacher: Starting at \$27.28/hour
- Substitute Paraeducator: \$19.51/hour
- Substitute Instructional Assistant: \$16.86 per hour
- Substitute Office Professional: \$22.44/hour

Any questions? Contact us at:

Substitute Coordinator tayer@lwsd.org

Director of HR, Data and Operations syuhan@lwsd.org

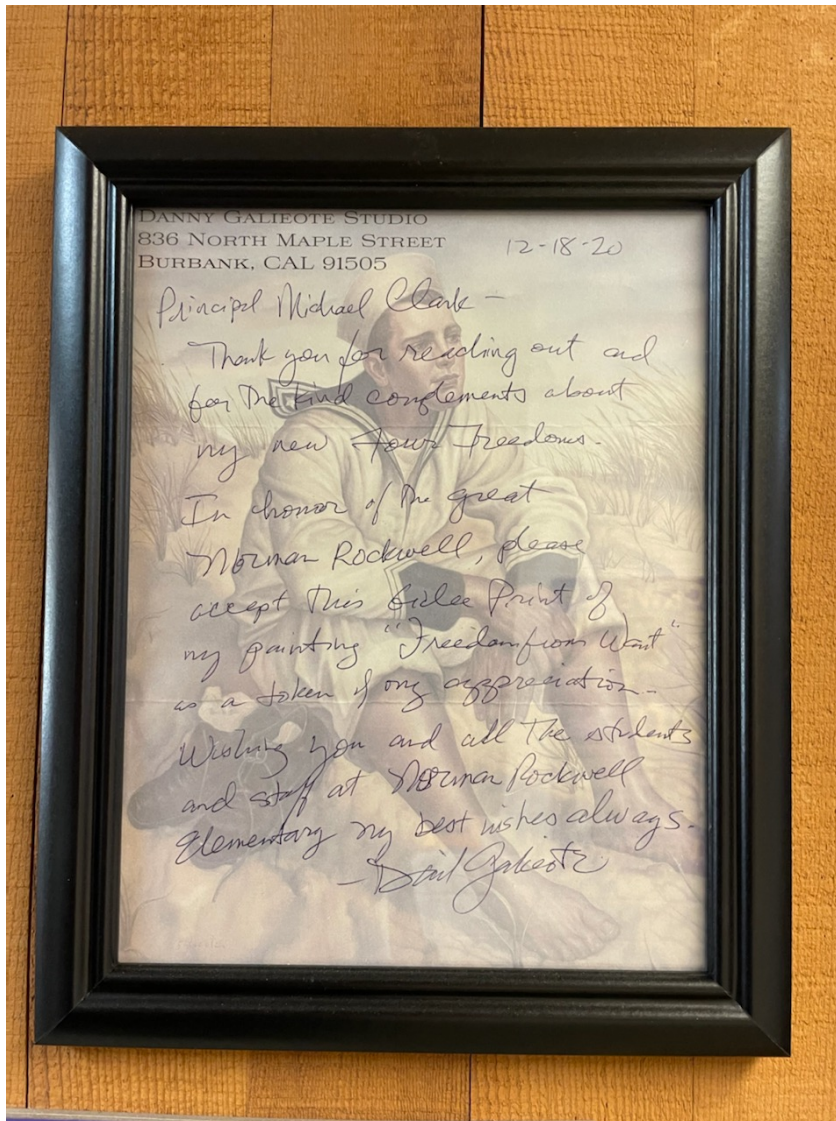




Snapshots of Rockwell Learning

Several artists have re-imagined Rockwell's iconic "Freedom from Want" over the years, including the Pop-American Regionalist, Danny Galieote, who gifted our school a signed copy of his work last year. Mr. Galieote's painting reflects the beautiful richness and diversity of our Redmond community. Also included below is a picture of the letter he wrote to our school community with his donation.





PTSA Updates

5th Grade Cover Contest

Interested in drawing, sketching or doodling the Norman Rockwell Spirit?

It's a Rockwell tradition for the graduating classes to submit designs for the yearbook **front & back** cover.

Enter the yearbook cover contest and your design could be selected!

Deadline: Friday, January 7th, 2022

Requirements:

- Black pen or black marker only please
- Please use two 8x10 papers to draw your pictures (front & back cover)

How to Submit:

There are two ways to submit artwork. Students can:

- Give to their teacher
- Scan & email yearbook@normanrockwellpta.org
- Accepted file formats include: jpg, SVG, TIFF, PNG and PDF (zip files also accepted). Files can be up to 100MB per file.



Math Challenge Tournament 2021

Rockwell Registration Code: 239

The Math Challenge Tournament organized by Ellipsis Academy will be held online this year on Saturday, December 11, 2021. All registered students can start the test anytime between 10am – 5pm PST (Pacific Standard Time). Once students have started the test, they will have one hour to complete it in one sitting. This tournament is open to Grade 1 – 6 students. Students in Grade 1 will be competing at a Grade 2 level.

If you are interested in participating in this tournament, you can find more info at <https://www.ellipsisacademy.com/fall-2021-math-challenge-tournament.html>

How to register:

- You can start registering now. Registration will close on Monday, Nov 29th.
- Our school participates in the MCT School Give Back Program. 15% of the registration fees will be given back to our school's PTA, if students/parents provide our school's 3digit code during registration. **Rockwell's code is 239.**

- Any student may use the Rockwell code to register including, on-line students, siblings attending other schools and more.
- Go to the website:
<https://ellipsisacademy.as.me/?appointmentType=26993570>

Please contact us if you have any question or if you need additional information about this tournament.

Janelle Urfer

Fiona Zhang

Rockwell



Updates

Picking up your child(ren) from school:

In the interest one of our core values of safety we are asking families to partner with us about picking students up from school during the school day.

Picking students up during lunch and recess impacts the focus of the supervisors and by extension student safety.

Please schedule your pickups of your child(ren) outside the following times:

Attendance Hotline: 425-936-2671



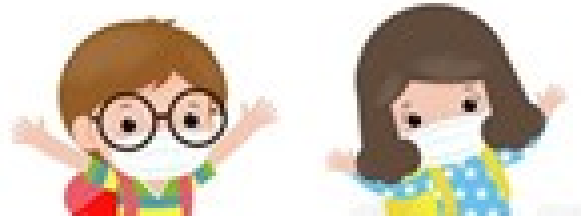
10:30 – 1
11:05 – 1

<u>Lunch</u>
11:15-11:
11:30-11:
11:40 – 12

Picture ReTakes will be December 1st

Like many businesses, LifeTouch/Shutterfly is experiencing staffing and supply shortages.

We appreciate your patience as we reschedule our retake day.



Extra masks in the student's backpack

November is the rainiest month of the year in Washington state. This means students will be outside in rain more and their masks get wet too.

Please have a **few extra masks in their backpacks** so they can change when needed, and keep track so you can remove used ones as necessary.

Thank you, and enjoy the extra hour this weekend.

Sayori Hinitz, PPE Coordinator

ATTENDANCE HOT

LINE

Do you have a doctor appointment? Illness? Traveling?

It is my job and honor as attendance secretary to keep track of every student in the building, but I need your help to ensure every student is accounted for.

Action required By 8:50am!! Call the **ATTENDANCE HOTLINE 425-936-2671** and please include the student's first and last name, or report the absence in Skyward. As a last resort, email StHatch@lwsd.org and CC the teacher.

Thank you for ensuring all students are accounted for every day!

StHatch@lwsd.org

Equity Team Update - The History of Thanksgiving - Should We Think About This Differently?

Hello from the Rockwell Equity team!

The history of Thanksgiving - should we think about this differently?

You may have grown up learning about Thanksgiving and the history in a very different manner than kids today. There are differing views amongst Native Americans as well on the holiday itself - as a group, they are not a monolith in their opinions. How can we learn more? The first step is to be curious and seek to understand. Take a look at the article here to understand how you can support Native Americans and your own learning journey.

The Real History Of Thanksgiving Isn't The One You Learned In School— Here's How To Celebrate Smarter, You can uplift Native Americans during this holiday and beyond.

<https://www.delish.com/holiday-recipes/a33984895/native-american-thanksgiving-holiday/>

The following blog article is one you may find helpful to understand more about Native American perspectives:

A Thanksgiving Message from Seven Amazing Native Americans

<http://www.project562.com/blog/a-thanksgiving-message-from-seven-amazing-native-americans/>

This is a great time to discuss the history and remind those around us to be curious to learn more about the Native American community, their culture and challenges.

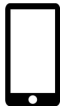
Do you have feedback or thoughts to share? Please do send them to Mr. Clark, we would love to hear from you



Upcoming events

Calendar

- November 24 – Half-Day Early Release – 11:50 AM
- November 25-26 – No School: Thanksgiving Break
- December 1 – Lifetouch Picture Make-Up Day
- December 9 - Vision and Hearing Screening



Quick Links

**For information on Free Wi-Fi for families, follow this link:
LWSD Free Internet webpage**

Resources for LWSD Families & Staff During School Closure

- Free Meals for Students
- Technology Support for Students & Families
Email for Students: ftaccess@lwsd.org or
Email Address for Parents: parentquestions@lwsd.org
- Educational Resources
- Child Care Resources



Contact Info

Norman Rockwell Elementary
11125 162nd Avenue NE
Redmond, WA 98052
(425) 936-2670 Office
(425-885-5528) Fax
<https://rockwell.lwsd.org/>
<https://normanrockwellpta.org/home>

