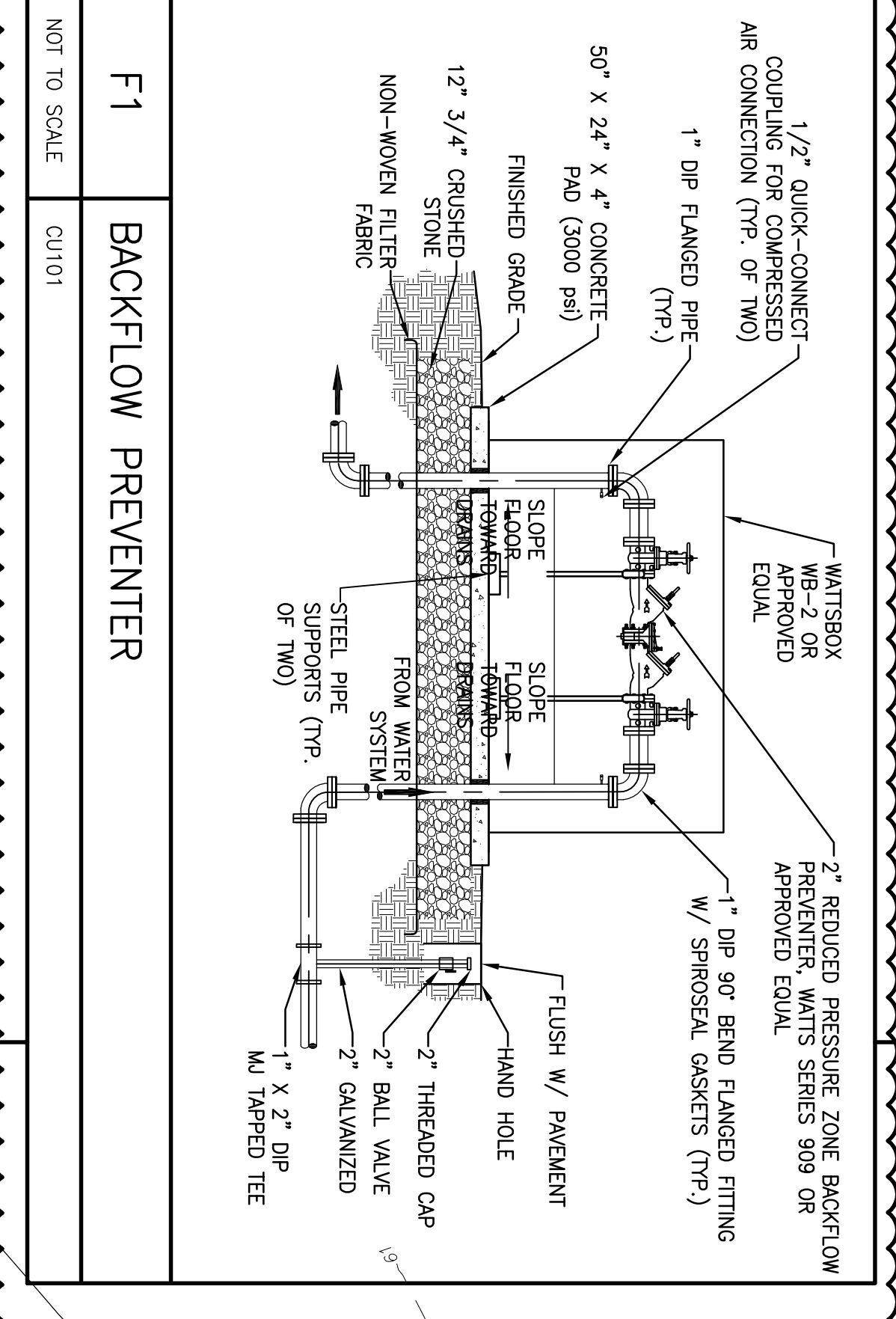
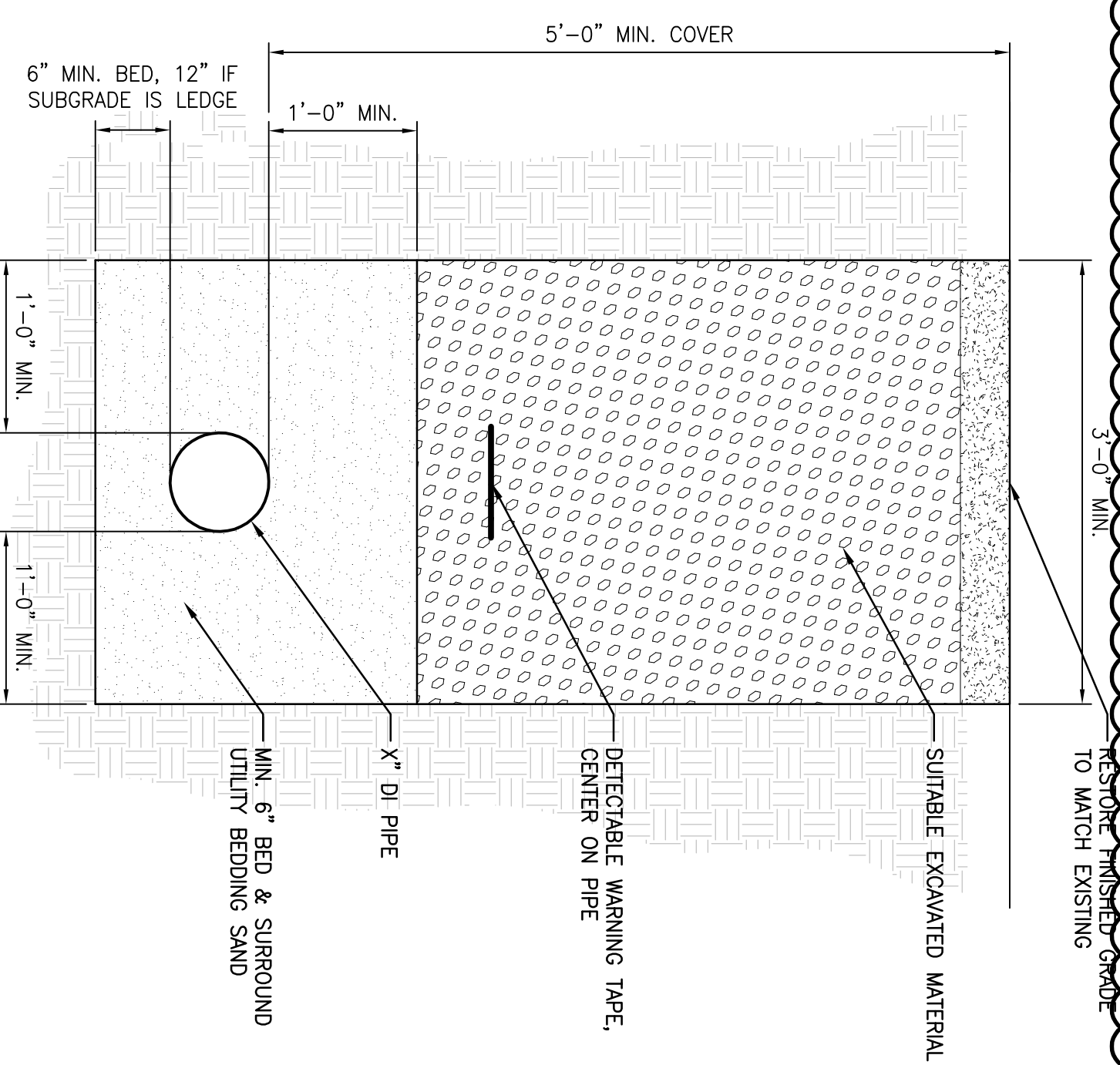


- NOTES:
1. PAVEMENT REPAIR IN CITY STREETS SHALL BE CONDUCTED BY THE CITY OF NEW BRITAIN, AT THE EXPENSE OF THE CONTRACTOR PER CITY OF NEW BRITAIN STANDARD SPECIFICATION FOR MUNICIPAL CONSTRUCTION SECTION 5102.02.
 2. ALL REPAIRS TO CURBING, SIDEWALKS, AND OTHER INFRASTRUCTURE SHALL BE UNDERTAKEN TO CITY OF NEW BRITAIN STANDARDS AND TO THE SATISFACTION OF THE NEW BRITAIN DEPARTMENT OF PUBLIC WORKS.
 3. ALL WATER PIPING UPSTREAM OF THE BACKFLOW PREVENTION UNIT SHALL BE TYPE K COPPER, BURIED WITH A MINIMUM COVER OF FOUR FEET PER CITY OF NEW BRITAIN STANDARDS.



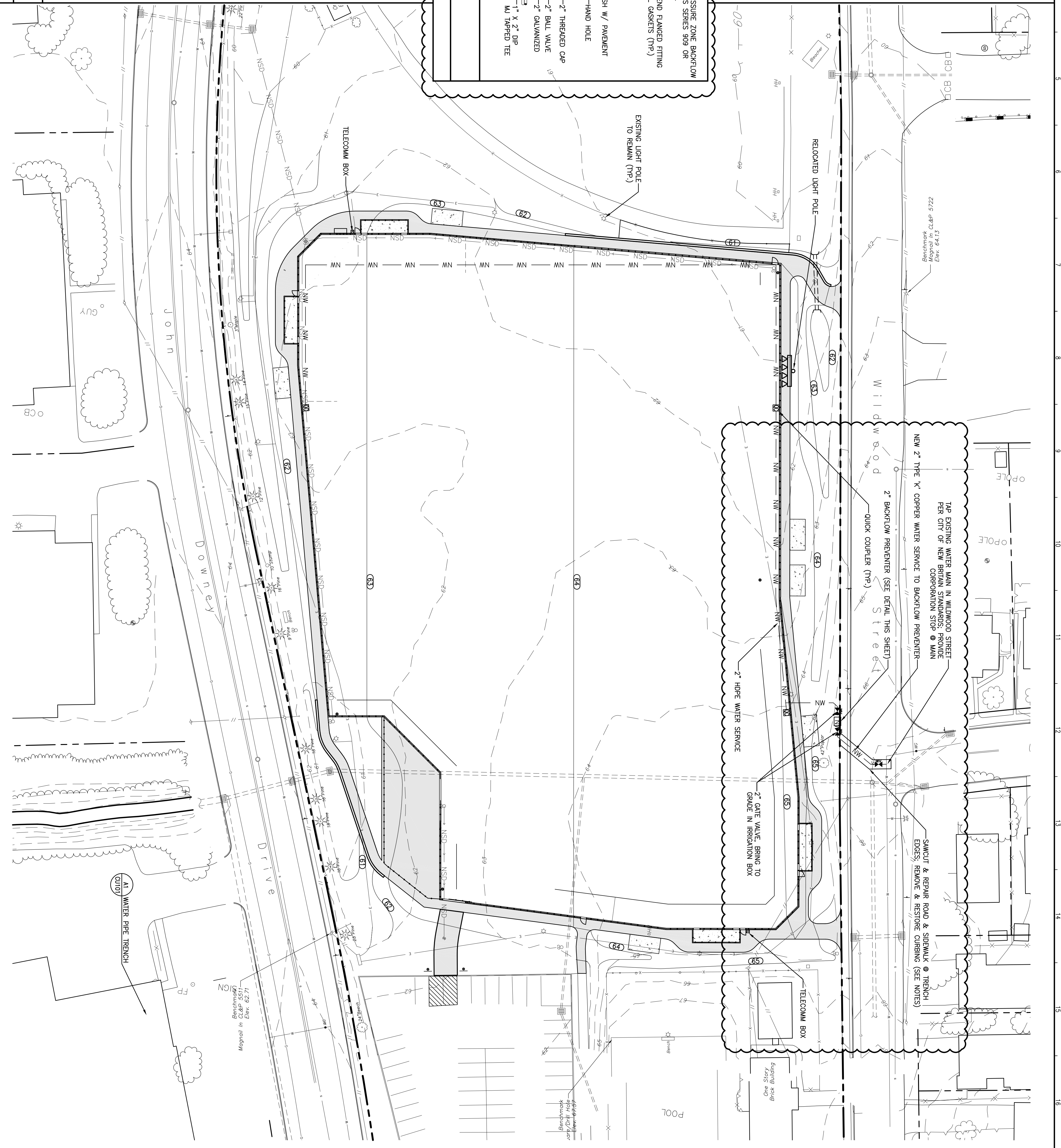
F1 BACKFLOW PREVENTER

NOT TO SCALE
CUI101



A1 WATER PIPE TRENCH

1" = 1'-0"
CUI101



REV	DESCRIPTION	DATE
0	ISSUED FOR BIDDING/CONSTRUCTION	11-25-13
1	ADD-2	12-13-13

NEW BRITAIN ATHLETIC FIELD IMPROVEMENTS
CHESLEY PARK
 NEW BRITAIN, CONNECTICUT

ADD-2
 12-13-13

CURRENT ISSUE STATUS:

ARCHITECTURE
 ENGINEERING
 PLANNING
 INTERIOR DESIGN
 COMMISSIONING

144 Fore Street/P.O. Box 618
 Portland, Maine 04104
 tel. (207) 772-3846
 fax. (207) 772-1070
 www.smrtinc.com

SMRT

GRAPHIC SCALE:
 0 1' = 30'

SHEET NO. CUI101

UTILITY PLAN