

EDUCATIONAL LEVIES TO SUPPORT EXCELLENCE FOR EVERY STUDENT

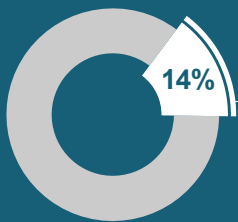


PROP. 1 - Replacement Educational Programs and Operations Levy



Continued funding for staff, opportunities and early learning, filling the gap between what the state funds and what our students need.

SUPPORTS 14% OF OUR
DISTRICT'S OVERALL
BUDGET



SCHOOL
STAFF



STUDENT
OPPORTUNITIES



EARLY
LEARNING

FILLS THE GAPS

PROP. 2 - Replacement School Technology and Capital Projects Levy



Continued funding for student computers, classroom technology and building updates.



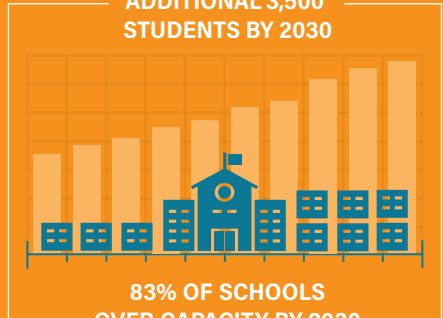
**MAINTAINS OUR
INVESTMENTS**

PROP. 3 - Building Excellence Capital Levy



Funding for school construction to add classroom space, reduce overcrowding and make sure our students have room to learn in our fast-growing district.

ADDITIONAL 3,500
STUDENTS BY 2030



83% OF SCHOOLS
OVER CAPACITY BY 2030

**ADDS CLASSROOM
SPACE**

The total tax rate for all three LWSD measures would be \$2.84 per \$1,000 of assessed property value. The current rate is \$2.57 per \$1,000 of assessed property value. All local education levies stay in our district to support Lake Washington School District students, staff and schools.



Scan this QR code for more information.

**Please vote by
February 8, 2022 Election**



Lake Washington
School District