



PARKLAND HIGH SCHOOL

Parent Newsletter



All information in this newsletter is subject to change.

From the principal's desk

Dear Parents and Guardians:

The holidays are always memorable for enjoying **seasonal music** and family gatherings. Our high school music lovers are so excited to hit the stage again as they provide several wonderful evenings of music for fans of all ages. The chorus concert is scheduled for Thursday, December 9 and the band concert will be on Wednesday, December 15. The school concert season concludes with the orchestra concert on Tuesday, December 21. All concerts offer a terrific jolt of holiday cheer. If you are looking for something a little different, check out the chorale concert at Neff's UCC at 7 PM on Sunday, December 12.

Congratulations to the talented cast and crew of **Disney's Moana Jr.** for their memorable performances during their recent family show held November 12 -14. Every aspect of the show was outstanding and I am looking forward to watching more great groups of performers in the years to come. Special thanks to Ms. Andrea Roposh and Mrs. Kim Brown for their dedication in providing such a wonderful experience for cast, crew, and patrons alike.

On the athletic courts and fields, Parkland once again enjoyed a very successful fall sports season. **Girls volleyball** enjoyed a spectacularly dominant season, winning both EPC and District XI titles before succumbing to North Allegheny in the state championships as the state runner up. We are so proud of all they've accomplished. The pep rally held on November 19 was one of highlights of the school year thus far.

Continued on page 2

From the principal's desk

Continued from page 1

Football was rolling along, riding an 8-game winning streak. Unfortunately, their quest for another District XI title came to a sudden halt in a loss to Emmaus. **Field hockey** also enjoyed a very strong season making it back to states, before losing a nail-biter in the first round. Credit to this year's senior class for re-establishing Parkland's field hockey program in our area. **Both soccer teams** had wonderful seasons (Boys EPC and District XI Runner Ups and Girls EPC and District XI Champs) before suffering heartbreaking losses in the first round of the state playoffs. Overall, I want to congratulate and thank all our varsity programs for their commitment to excellence, selfless attitudes, and positive contributions to Parkland on the field, in the classroom, and in the community.

We are very proud of our **students' achievements at LCTI**. Roughly 400 of our students participate in full- or part- time technical education programming in Schnecksville. Many of the programs are in exceptionally high demand in today's workforce and Parkland is very proud of the students who were recognized by LCTI as Students of the Month. Please turn to page 9 to see who is currently setting the bar for Parkland at LCTI. Congratulations to all of you.

Due to the pandemic, one new opportunity available to students is our **after-school tutoring program**. We have set up tutoring opportunities available in the library throughout each week in every core subject area. The impact of the pandemic has affected students in various ways and it is our hope that this tutoring service will enhance students' progress so they can reach their full potential. Please see page 10 of this newsletter for more information about tutoring hours.

The holiday season always moves quickly so I just want to remind everyone that **January is the beginning of course registration**. The 2022-23 Course Selection Book will be available on the PHS website mid-December.

Parkland High School experiences high volumes of traffic on a daily basis at arrival and dismissal times, especially during this pandemic time. As inclement weather approaches, please remember to **be patient while driving on our roads**. This includes not being double parked and/or waiting in no parking zones. We appreciate your support as we try to reduce the potential for traffic accidents.

Wishing you a healthy and happy holiday season,

Sincerely,



James E. Moniz II
Principal
Parkland High School
monizj@parklandsd.org



Inclement Weather and Early Closings

Please click on the
snowflake below
to see an
Important Message
from
Parkland School District's
Superintendent of Schools



December Calendar

SUN	MON	TUE	WED	THU	FRI	SAT
			1 Day 6	2 Day 1 "B" Schedule	3 Day 2	4
5	6 Day 3	7 Day 4	8 Day 5	9 Day 6	10 Day 1	11
12	13 Day 2	14 Day 3	15 Day 4	16 Day 5 "B" Schedule	17 Day 6	18
19	20 Day 1	21 Day 2	22 Day 3	23 Day 4	24 Winter Holiday School Closed	25
26	27 Winter Holiday School Closed	28 Winter Holiday School Closed	29 Winter Holiday School Closed	30 Winter Holiday School Closed	31 Winter Holiday School Closed	

BELL SCHEDULES

PERIOD	A SCHEDULE (Regular Day)	B SCHEDULE (Homeroom)	C SCHEDULE (Early Dismissal)	D SCHEDULE (2-Hour Delay)
	7:35 Warning Bell	7:40-7:50	7:35 Warning Bell	9:35 Warning Bell
1	7:40-8:28	7:54-8:36	7:40-8:22	9:40-10:08
2	8:32-9:15	8:40-9:22	8:26-9:04	10:12-10:37
3	9:19-10:02	9:26-10:08	9:08-9:46	10:41-11:06
4	10:06-10:49	10:12-10:54	9:50-10:20	11:10-11:39
5	10:53-11:36	10:58-11:40	10:24-10:54	11:43-12:12
6	11:40-12:23	11:44-12:26	10:58-11:28	12:16-12:45
7	12:27-1:10	12:30-1:12	11:32-12:02	12:49-1:18
8	1:14-1:57	1:16-1:58	12:06-12:31	1:22-2:01
9	2:01-2:44	2:02-2:44	12:35-1:00	2:05-2:44
5 Minute Warning Bell for Bus Departure	2:47 Buses depart at 2:52	2:47 Buses depart at 2:52	1:03 Buses depart at 1:08	2:47 Buses depart at 2:52

Any changes to these schedules will be posted on the school website and communicated via Schoology and School Messenger.

- Lunch periods are assigned during periods 4, 5, 6 or 7.
- PM LCTI students will eat lunch period 4 or 5 and are dismissed at 11:25.
- AM LCTI students will eat lunch at LCTI and return for class Period 6.

- ❖ Students who are approved for "early dismissal" must leave the school building and property immediately upon dismissal.
- ❖ Students who are approved for "late arrival" may not enter the school until 10 minutes before their first class.
- ❖ All students must leave the school building and property immediately upon dismissal unless they are involved in a PHS-sponsored and supervised, after-school activity.

Counseling corner



Seniors: College Applications

Seniors are reminded that January 1 college application deadlines must be reported to the Counseling Office no later than **Friday, December 10**. Ten working days are required to process all college/scholarship applications.

Seniors: Scholarship Opportunities



Seniors interested in college scholarship opportunities should check out the college scholarship link on the [Parkland High School website](#), or on Schoology. New listings are posted weekly. Be sure to meet all deadline dates.



Testing Calendar

December 4, 2021

SAT I Reasoning Test and SAT II Subject Tests administration
(Parkland High School is not a test center on this date.)

December 11, 2021

ACT administration
(Parkland High School is not a test center.)



PSAT/NMSQT[®]

Preliminary SAT/National Merit Scholarship Qualifying Test

College-bound sophomores and juniors

Preliminary Scholastic Assessment Test (PSAT) results will be available online, sometime in mid-December.

If they have not already done so, students will need to create a College Board account to access their online score.

After viewing their PSAT results, students are encouraged to connect their College Board and Khan Academy accounts to get free, personalized SAT study recommendations.



CHARACTER COUNTS



Our December Character Counts focus will be on the success skill of **Perseverance**. The pandemic has truly been a challenge to the world in every way. Here in Parkland our students, families, staff, and entire organization have faced daily challenges like never before. Personally, my favorite quote about perseverance is *"Perseverance is not a long race; it is many short races one after the other."* - Walter Elliot. How well each person rises to daily challenges, accepts them and demonstrates the grit to see a difficult situation through is a clear indicator of their perseverance. If they do not already possess this skill, our students need to understand that life is full of obstacles (small, large, continuous, etc.) and must learn how to process, attack, and manage these difficulties in order to reach their goals and happiness. Students must experience this process so they have the skills necessary to live independent lives. We will focus on key attributes which promote perseverance in our classrooms and we appreciate your support in watching your students learn to demonstrate this skill. - Mr. Moniz

Keystone Test Dates and After-School Boot Camps

January 4 - 5

Literature Keystone

January 6 - 7

Algebra Keystone

January 11 - 12

Biology Keystone

After-School Boot Camps for Winter Biology and Algebra Keystones are underway.

Parkland High School students are eligible to participate in Boot Camps if they are:

- Students in grades 9-11 who have already taken the Keystone Exam and have not yet achieved proficiency.
- Students who are new to Parkland and have no record taking the Keystone Exam or similar state test.
- Students who did not take the Spring Keystone Exam in May or September 2021 but had Algebra 1 or Biology in the 2020-2021 school year.

◇ **Algebra 1 Keystone Boot Camp [flyer](#) and [sign up](#)**

◇ **Biology Keystone Boot Camp [flyer](#) and [sign up](#)**



December

Upcoming events

Thursday

2

"B" Schedule — Character Counts

Monday

6

Hanukkah Ends at Sundown

Thursday

9

Chorus Winter Concert grades 9/10, Chorale 6:30 PM (Auditorium)

Chorus Winter Concert grades 11/12, Select Ensemble, Chorale 8:30 PM (Auditorium)

Monday

13

Mr. Parkland Auditions 3:10 PM (Room C241)

PLTW Biomedical Sciences White Coat Ceremony 6 - 7:30 PM (Auditorium)

Tuesday

14

Mr. Parkland Auditions 3:10 PM (Room C241)

Wednesday

15

Mr. Parkland Auditions 3:10 PM (Room C241)

Band Winter Concert 7 PM (Auditorium)

Thursday

16

"B" Schedule — Character Counts

Tuesday

21

First Day of Winter

Orchestra Winter Concert 7 PM (Auditorium)

Friday

24

Christmas Eve

Winter Holiday—School Closed

Saturday

25

Christmas





Sunday

26

Kwanzaa begins

Monday

27

Winter Holiday—School Closed

Tuesday

28

Winter Holiday—School Closed

Wednesday

29

Winter Holiday—School Closed

Thursday

30

Winter Holiday—School Closed

Friday

31

New Year's Eve

Winter Holiday—School Closed

*Be kind whenever possible.
It is always possible.*

Dalai Lama





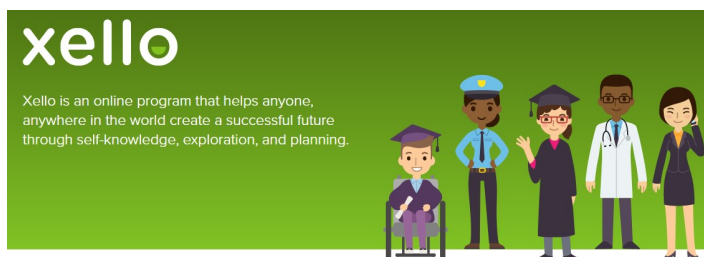
Sophomores and New Parkland Juniors/Seniors:

At the start of the second marking period, a course was added to your schedule called **Career Explorations**.

The Career Explorations program has replaced the Graduation Project requirement for students starting with the Class of 2017. The purpose of this course is to teach students how to match personal needs and expectations with satisfying career options. In Career Explorations, students will learn:

- * Self-assessment skills
- * To research major and career alternatives
- * To make decisions based upon sound factual information
- * To utilize a variety of resources

Students will need to complete an online course and digital portfolio using tools in **Xello**. They can access Xello through the Clever App. This work will mostly be done on the student's own time, however students will be introduced to Xello through their physical education classes. Students are free to complete the portfolio at any time on their own. Completion of this course will be determined when all online modules are complete. Upon completion, students will receive 0.5 credit. Course completion does not factor into GPA or class work.



Seniors: Career Explorations is a Pennsylvania Department of Education requirement for graduation and must be completed by May 2022.

Students should be able to see the Career Explorations course in Schoology. The Schoology page has a screencast to walk the student through the program and the requirement of the course.

If your child has any trouble completing this assignment or if he/she has any further questions, please have your child see their guidance counselor, or contact Mrs. McPeek in the Counseling Office at mcpeeka@parklandsd.net or Mr. Monahan in the PHS Library at monahanj@parklandsd.net.

September Students of the Month

Mia Eckert

SOC Supply Chain Management and Logistics
Technology

Jonas Geiger

Carpentry

Ashton Grebs

Engineering Drafting and Design

Lucas Longenbach

CAP Graphic Communications

Josif Osmanovic

Marketing and Business Education

Isaiah Page

CAP Electrical Technology

Hailie Reinhard

Academic Center

Seth Rohrbach

Supply Chain Management and Logistics Technology

Mya Wheeler

CAP Academic Senior

Julian Wiewiora

Web Design/Web Programming

October Students of the Month

Jaden Barasch

Electrical Technology

Alexaundra Batista

Commercial Baking

Nicholas Borsevich

Masonry

Marcel Burden

Carpentry

Michael Canales

Heavy Equipment Operations and Preventive Maintenance

Kimberly Castillo

Health and Medical Sciences

Jesse Dean

Carpentry

Dakota Gaul

Teacher Education

Dylan Hoin

SOC Building Trades Maintenance

Onielis Maldonado Sanchez

CAP Academic Junior and CAP Graphic Communications

Jacob Malitzki

Advertising Design/Commercial Art

Isaiah Page

CAP Electrical Technology

Syerra Rosato

Academic Center

Semra Sabri

Teacher Education

Jenaye Saunders

Heavy Equipment Operations and Preventive Maintenance

Emerson Slaughenhaupt

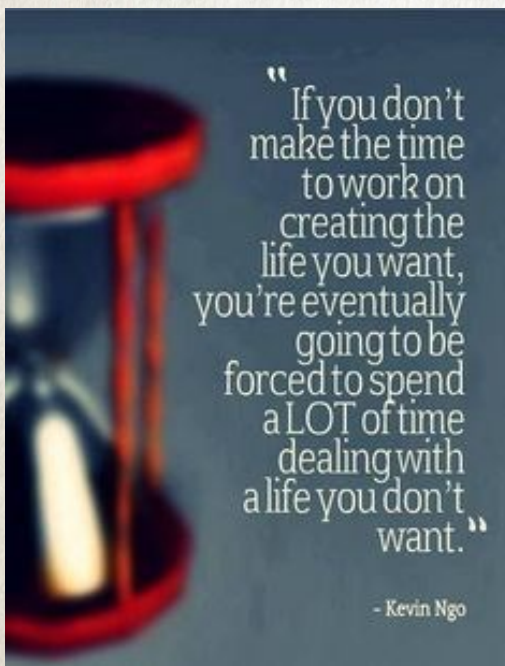
Criminal Justice

Mya Wheeler

CAP Office Systems Technology

Aayan Yasir

Pre-Engineering and Engineering Technology



Need Help
with
Academic
Studies?



After-School Tutoring Program Available for All Students

Stop by the PHS Library after school **Mondays – Thursdays** from **3 – 4 PM** to get extra help with English, Social Studies, Math, Science, and World Language classes.

The general schedule with locations is as follows:

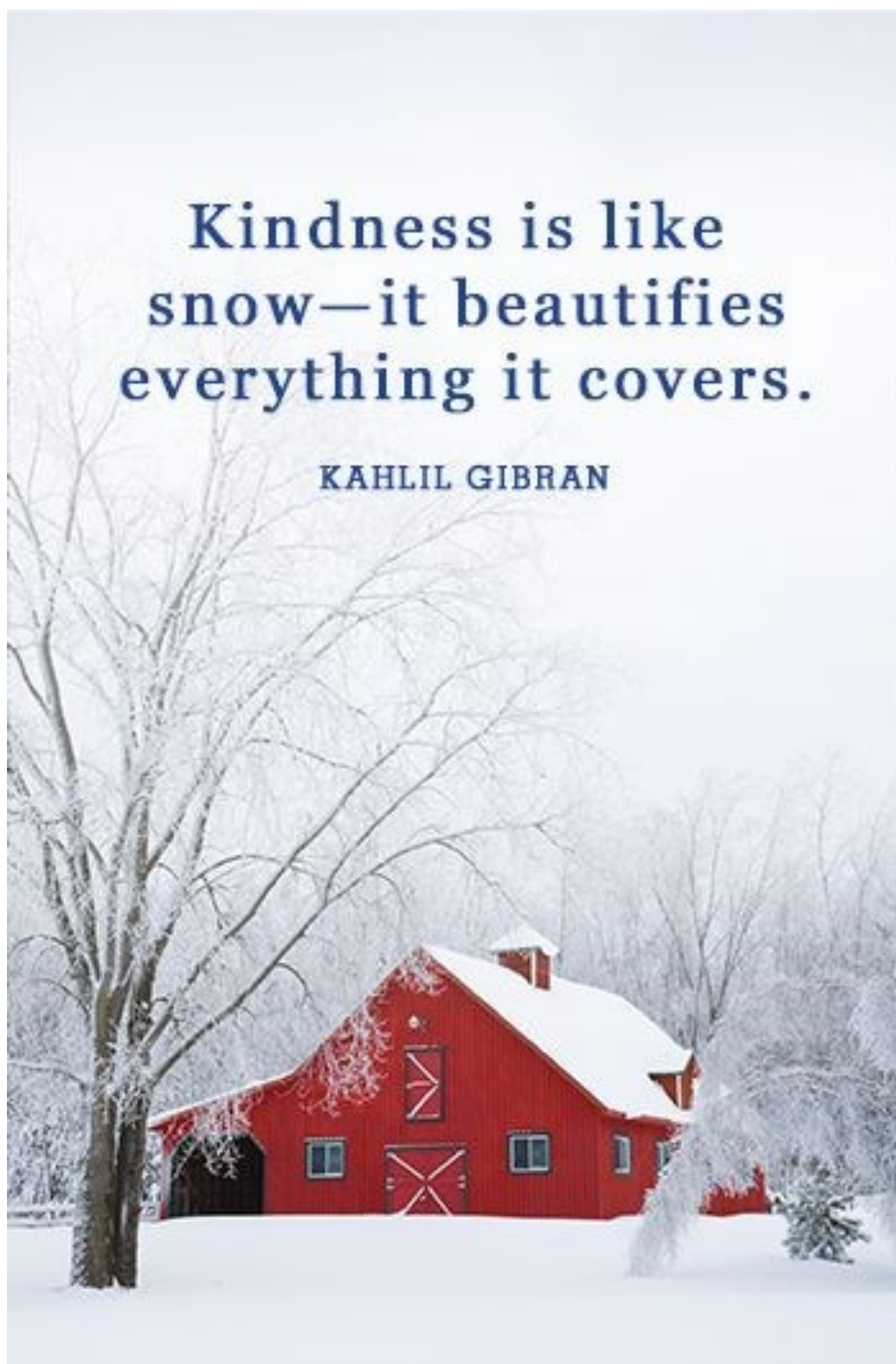
MONDAYS	TUESDAYS	WEDNESDAYS	THURSDAYS
ENGLISH Reference Section	SOCIAL STUDIES Reference Section	ENGLISH Reference Section	SOCIAL STUDIES Reference Section
*SCIENCE Link Lab	MATH Link Lab	*SCIENCE Link Lab	MATH Link Lab
	*WORLD LANGUAGE Classroom (if available) OR Back Left of Library (Near Teacher Section)		*WORLD LANGUAGE Classroom (if available) OR Back Left of Library (Near Teacher Section)

* = Not all Science and World Language classes are available. Check Schoology for specifics about which subject-specific Science and World Language tutors are available on these days.

The PHS Tutoring Program will run **now through the end of May 2022** and is **free** to all current PHS students in grades 9-12. For more details about the tutoring calendar and courses available, students should join the Schoology Course with this code: **MSB3-4MQP-RP4HQ**

Kindness is like
snow—it beautifies
everything it covers.

KAHLIL GIBRAN



Visual and performing arts



Trojan Art Gallery

Maya Rodgers is a 2017 Parkland High School graduate who earned a bachelor's degree from Ithaca College in Communication Management and Design in 2020. She went on to work as the marketing manager at Museum of the Earth in Ithaca, New York and is now an associate designer for New York Historical Society in New York City. Poster design is often the medium of choice for Maya, and her latest work exhibits elements of Swiss design while highlighting traditional typography and a grid system.

The daylight hours have shortened but the hours of hard work by the students in the A-wing have not. December is a month filled with concerts, both in the school and in the community. The Visual Arts students are finishing up their first semester work and getting ready to begin displaying their art in the school gallery and at the Scholastic Art Show.

CONGRATULATIONS



The following students qualified for District Chorus to be held the weekend of February 11:

Soprano 1: **Zoe Breininger, Evelyn Montone, Brenna Pelizzoni** and **Grace Werteen** (1st Place)

Soprano 2: **Isabella Carnero, Luciana Carnero, Marlie Heym** and **Rachel Kanter**

Alto 2: **Katelyn Attieh, Emily Bachl** (1st Place), **Laurel Bendetti, Anna Lorenzo** and **Meredith Schmoyer**

Tenor 1: **Isaiah Palmer, Grant Pinsley, Agidio Poloni** and **Andrew Sachse**

Tenor 2: **Vivek Shepherd**

Bass 1: **Jovanne Cortez** and **Marcus Shin**

Bass 2: **Jaxon Egge, Julian Ettinger-Finley** and **Eric Wood**

The following music students were just inducted into the Tri-M Music Honor Society:



Tri-M® Music
HONOR SOCIETY

Alena Attieh
Sara Ayad
Emily Bachl
Laurel Bendetti
Milena Bernini
Yechan Cho
Joshua Chou
Wyatt Frey
Michael Glick
Madelyn Grim
Gabrielle Hare
Glenn Hechler
Andrew Hill

Katheryn Hopkins
Jesse Khalil
Harrison Kim
Andrew Kistler
Cassandra Lee
Sydney Lehman
Anna Lorenzo
Elias Miller
Katarina O'Mara
Brenna Pelizzoni
Lauren Phillips
Joshua Phillips
Jessica Price

Rishika Rohatgi
Mitchell Roth
Carly Sachse
Dakota Schultz
Jack Sperry
Jenna Stanski
Ollie Stroup
Addison Treat
Emily Walsh
Grace Werteen
Megan Wolff
Eric Wood



ON BEHALF OF THE
DEPARTMENT OF VISUAL
AND PERFORMING ARTS,
WE WANT TO WISH ALL OF
YOU A WONDERFUL
HOLIDAY SEASON AND
THE HAPPIEST OF NEW
YEARS.



Concert season

The Parkland High School concert season begins on December 9 with the High School **Chorus concerts**. Due to the number of participants and the challenge for seating everyone, there will be two concerts that evening. The first will begin at 6:30 PM, featuring the Chorus for grades 9 and 10 along with the PHS Chorale. We will then clear the auditorium and at 8 PM the Concert Choir for grades 10 and 11 along with the Select Ensemble and PHS Chorale will take the stage.

Our PHS **Band concert** will be held at 7 PM on December 15. This will include selections from all of our band ensembles.

The concert season will come to a finale on December 21 when the PHS **Orchestra** takes the stage with their **Winter concert**.

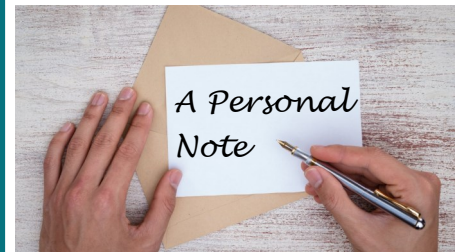
The annual **Chorale performance at Neffs UCC** is scheduled for 7 PM on December 12. This annual event is back again featuring the wonderful voices of our most advanced vocal students in a location that truly showcases their skills.

Additionally, the **Chorale** will be performing at several local events:

- * December 7 - East Penn and Western Lehigh Chamber of Commerce Holiday Luncheon
- * December 22 - Annual 'Road Show' Day - Spreading Holiday Cheer to the Lehigh Valley

The Parkland High School **Strolling Strings** have a busy holiday schedule with performances on December 1 at West Coplay Maennerchor, December 9 at the Lehigh Country Club, and December 14 at Neffs UCC.

The **Parkland Festival String Quartet** has also been busy performing at induction ceremonies and other events throughout the community during the last month.



This is my final monthly update as I become the "former" director in a few weeks.

It has been my privilege and an honor to have served the Parkland School District these past 20 years.

I welcome Mr. Frank Anonia as the new Director of Visual and Performing Arts. The Arts at Parkland are in good hands.

Please continue to support all of the arts in all of the schools. As my own children would say, "Peace. . . Out."

Mr. Mark Stutz



Athletic news



The Fall Season is Complete

Golf: 9-7

Girls Tennis: 20-2

Girls Soccer: 19-3-1

Boys Soccer: 16-7-1

Girls Cross Country: 16-1

Boys Cross Country: 17-0

Girls Volleyball: 25-1

Football: 9-2

Field Hockey: 16-8

Congratulations to all our teams.

Winter Sports

Winter sports teams began practices on November 19.

Their first competitions will be on **December 17**.

Good luck to all of our teams.



Congratulations

EPC Champions

Girls Tennis
Boys Cross Country
Girls Soccer
Girls Volleyball
Football

District XI Champions

Girls Tennis
Girls Volleyball
Girls Soccer

State Runner Up

Girls Volleyball

Fall EPC Scholar Athletes

Boys Cross Country - **Cameron Price**

Girls Cross Country - **Emily Beers**

Field Hockey - **Tess Garchinsky**

Football - **Peyton Marciniak**

Golf - **James Kelly**

Boys Soccer - **Jacob Seed**

Girls Soccer - **Oludemilade Olatilo**
Overall EPC Scholar Athlete

Girls Tennis - **Kaila Miles**

Girls Volleyball - **Sydney Esquieres**

Congratulations!

Boys Soccer EPC All Stars

1st Team Defender - **Jacob Seed**
2nd Team Forward - **Zachary Morales**
2nd Team Midfielder - **Michael Li**
3rd Team Midfielder - **Kyle Rothwell**
3rd Team Forward - **Will Wagstaff**

Girls Soccer EPC All Stars

1st Team Defender - **Catherine Crampton**
1st Team Midfielder - **Oludemilade Olatilo**
1st Team Forward - **Olivia Kunz**
2nd Team Defender - **Isabella Brans**
2nd Team Midfielder - **Danielle Marsteller**

Girls Volleyball EPC All Stars

1st Team Outside (MVP) - **Brynn Dreisbach**
1st Team Middle - **Elena Pursell**
1st Team Libero - **Scarlett Jago**
2nd Team Setter - **Maggie Smith**
3rd Team Middle - **Sydney Esquieres**

Field Hockey EPC All Stars

1st Team Midfield/Defense - **Emma Brayford**
2nd Team Midfield - **Aurora Gery**
3rd Team Midfield - **Makayla Brunnabend**
3rd Team Midfield - **Logan Oswald**



Girls Tennis EPC All Stars

1st Team Singles - **Erin Joo**

2nd Team Singles - **Leah Zolotareva**

3rd Team Singles - **Gabrielle Leonzi**

1st Team Doubles - **Anshika Gupta**

1st Team Doubles - **Kaila Miles**

Boys Cross Country EPC All Stars

1st Team - **Paul Abeln**

1st Team - **Ethan Willard**

Golf EPC All Star

1st Team - **James Kelly**

Football EPC All Stars

1st Team Tight End - **Nico Medlar**

1st Team Offensive Tackle - **Noah Rode**

1st Team Center - **Adler Billig**

1st Team Kicker - **Gryffin Mitstifer**

1st Team Defensive End - **Brock Boyer**

1st Team Outside Linebacker - **Nico Medlar**

2nd Team Offensive Tackle - **Marko Galetovic**

2nd Team Guard - **Marc Ramos**

2nd Team Running Back - **Dahlir Adams**

2nd Team Defensive Lineman - **Noah Rode**

2nd Team Special Teams Player - **Trey Tremba**

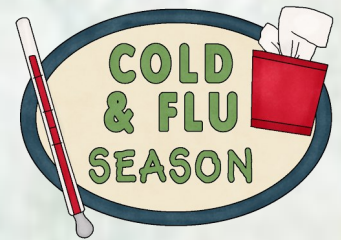




Health Room Updates

Flu season reminder

The upcoming holiday season offers the opportunity for more social interaction and the opportunity to spread more than holiday cheer. The flu season continues to be in full swing through April. It is recommended that your student receive their flu vaccine at this time; please check with your doctor to schedule one soon.



Stay home
when sick



When to keep your child home

To help stay healthy and decrease the spread of illness in the school, we are encouraging all families to adhere to the following guidelines for sending your child to school.

Please keep your child home from school (even if they have a test or sporting event) if he/she is experiencing any of the following cold, flu, or COVID symptoms:

- Fever of 100 degrees or more
- Vomiting
- Diarrhea
- Persistent cough
- Severe sore throat



These are the same criteria the Health Room uses as guidelines when sending students home ill from school.

Students should not return to school until they are fever free for twenty-four hours without the use of fever-reducing medications.



Health forms available online

All Health Forms are available
on the PHS Website under
Health Services [here](#).

Juniors:

Return Completed Physicals to the Health Room

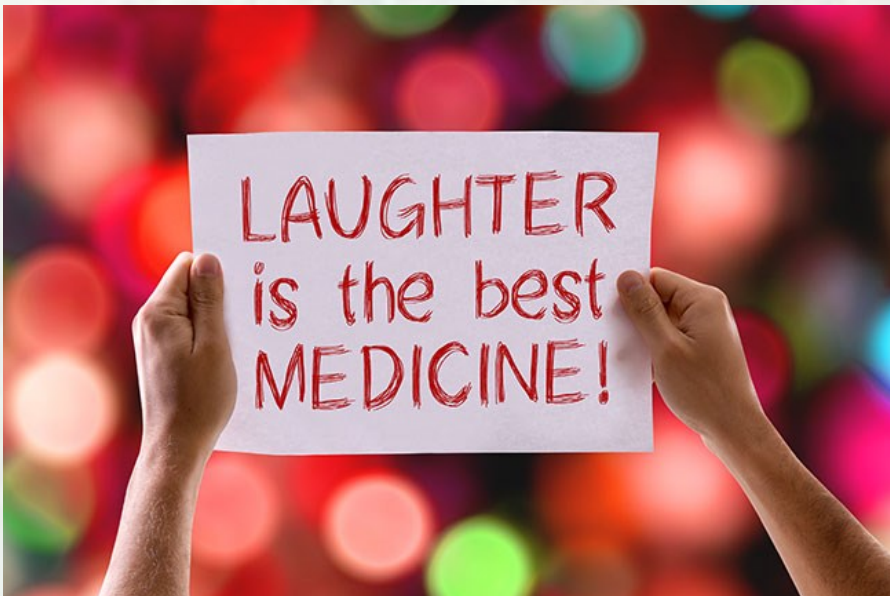


All eleventh grade students should return their physicals to the Health Room as soon as possible.



Immunization Requirement

The meningitis vaccine is required on or after your student's 16th birthday. Students in grade 11 will be required to have this immunization on the first day of their senior year. The eleventh grade physical is a good time to be sure this immunization is completed. Forms are available on the website.



Reminders about medication during the school day

Students who need medication during the school day will need to submit a parent authorization **and** a physician's order for prescription or over-the-counter medications.

All medication, prescription and nonprescription, must be brought to the school by a parent and/or guardian. Forms are available on the PHS website.





Driver's Education

Winter Driving Safety Tips

Be sure your vehicle is ready for winter

Check your tire tread and inflation.

Colder temperatures will reduce your tire pressure. Make certain you have the appropriate psi for your vehicle. Check your owner's manual for the 'operating pressure' recommended; do not exceed the maximum pressure indicated on the side wall of the tire.

Warm up your vehicle and make sure all windows and mirrors are free of frost and ice.

Keep your gas tank at least half full.

Winter driving may lead to longer commutes, stopped traffic and increased accidents. Having at least a half tank will allow you to run your car's heater and protect your vehicle from accumulating too much condensation in your fuel tank.

Stock your vehicle with emergency supplies and items that will help handle winter driving-related tasks:

- * Snow shovel, broom, and ice scraper
- * Abrasive material such as sand or kitty litter, in case your vehicle gets stuck in the snow
- * Jumper cables, flashlight, and warning devices such as flares and emergency markers
- * A cell phone with charger, water, food, and any necessary medicine for longer trips or when driving in lightly-populated areas
- * Blankets for protection from the cold



Sophomore Parents

Your Child's Driver's Theory Course Certificate of Completion may Save You Money on your Car Insurance



Your child will be coming home with a Certificate of Completion from the theory course at the end of Marking Period 2 or Marking Period 4 (depending if they are scheduled in the fall or spring). Please file your child's certificate with your car insurance. Your child is likely to get a discount when they are added to your policy, and a copy is also needed if you choose to complete the CLIU-21 Behind-the-Wheel program.

CLIU-21 Behind the Wheel (BTW) Course

The CLIU-21 Behind the Wheel lessons are available for all students who have a valid learner's permit. For more information and to register, log onto www.cliu.org. Select 'Departments' and scroll down to the 'Driver's-Ed' key icon. Contact 610-769-4111 x1299 with any questions.



*If Winter comes,
can Spring be far behind?*

- Percy Bysshe Shelley



Library lines



Research Paper Resources Available

It is hard to believe it is December already and in the Library that means research papers are in full swing. If you intend to work over the break, remember to stop in the Library for print resources. While at home, students have access to our many subject-specific databases; just make sure to hover your mouse over the “?” for the password. To finish off any great research paper, students can also use the NoodleTools citation maker, available through CLEVER.



In Makerspace News

Students are now required to fill out a Google form to reserve a class period or after-school time to work in the Makerspace. This form is located in Schoology, under the Library Media Center Group, then in the Makerspace folder under Resources. Requests must be filled out 24 hours in advance, and one request per person.

Speaking of the Makerspace, Mrs. Slotter's AP World History classes created murals that forensically broke down empires throughout history.



Thank you
Parkland
Education
Foundation

Thanks to a generous grant from the Parkland Education Foundation our student Tech Team has a new workbench to repair Chromebooks and assist students and staff.

“We must find time to
STOP & THANK
the *people who make*
a difference
in our lives”

—John F. Kennedy

from *The Trumpet*, Parkland High School's
school newspaper, June 1988, Volume 53, Number 11

June 1988

the trumpet



Sonny Bono plants a time bomb in Debbie Harry's hairdo in a scene from 'Hairspray.'

News 5

'Hairspray puts student on the silver screen

Lights ... camera ... action! Few people are lucky enough to experience what it is like to make a movie, let alone be in one. But seniors Michelle Bonelli and Jen Hartsborne are two such people.

Both Michelle and Jen are in the current hit movie "Hairspray" which premiered Friday, February 26 in the Lehigh Valley. One of the scenes in the movie was filmed at Dorney Park, re-named "Tilted Acres" in the movie.

Michelle first heard about the filming from a newspaper article last May. "I was really excited about it and so I decided to try out," she said.

Auditions were held at Dorney Park May 23 and 24. Those who were interested had to dress up in 60's attire and tell who they were and why they wanted to be in it. Anywhere from 500 to 1,000 people auditioned and approximately 300 people actually ended up in the movie.

Filming was held Monday, June 8 through Friday, June 12. Michelle, who went four out of the five days, was there from 7 A.M. to 5 P.M. in the afternoon each day.

Michelle met and talked to many of the main characters in the movie including Ricki Lake and Michael St. Gerard as well as other well-known people as Sonny Bono, Debbie Harry, and Divine. She also met the director, John Waters.

"It was great meeting these people. The cast was really friendly and helpful," she said.

Michelle looked forward to seeing the final movie. And while she is in the "Tilted Acres" scene, she said, "I didn't really care how much I got in the movie because it was so much fun."

She helped organize a party for all the extras on March 4. It gave everyone a chance to get together again and talk about the movie. "We were like one big family," said Michelle.

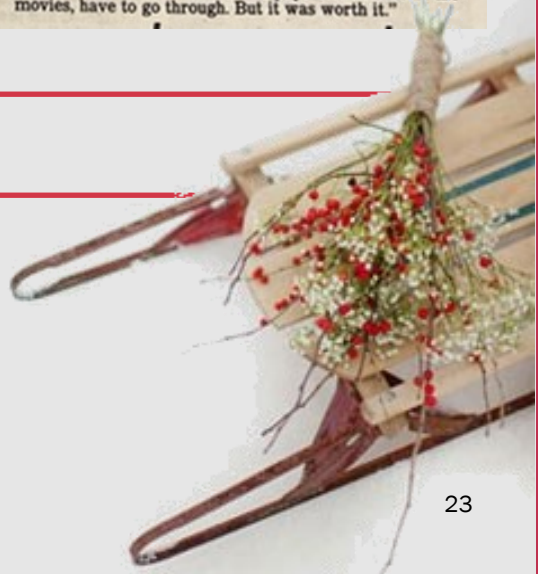
Like Michelle, Jen also heard about the filming from the newspaper. She decided to try out because she enjoys acting and because she "thought it would be fun to do."

When asked what her reaction was the first time she saw the movie, Jen said, "Surprisingly, I thought it was funny! While I was watching it being filmed, all I kept thinking of was how corny it was going to be. But it wasn't!"

Jen enjoyed meeting the actors and actresses in the movie, some of which included Debbie Harry and Sonny Bono. She also got the chance to meet Chubby Checker, who was there one day filming a commercial.

For Jen, the days she spent at the filming were a learning experience as well as a fun time. "I never realized what the extras, that no one pays attention to in the movies, have to go through. But it was worth it."

From the Archives





Student Assistance Program (SAP)

The Student Assistance Program is excited to announce some new items for December.



Support for Students Exposed to Trauma

We will be offering the Support for Students Exposed to Trauma: The SSET Program. The SSET is a non-clinical adaptation of the Cognitive Behavioral Intervention for Trauma in Schools (CBITS) Program. SSET teachings utilize many of the same cognitive and behavioral skills as CBITS, such as social problem solving, psychoeducation, and relaxation. The pandemic has caused a great deal of trauma across all age groups, so we are providing a group for students to process and move past the trauma.

Hygge Seminar

The [SAP webpage](#) will have pre-recorded seminars for you and your children to watch together. The next seminar will be on the concept of Hygge. Hygge (pronounced hue-guh, not hoo-gah) is a Danish word used when acknowledging a feeling or moment, whether alone or with friends, at home or out, ordinary or extraordinary as cozy, charming or special.



Outside Counseling Available

If your child is in need of outside counseling, please call the Student Assistance Program at 610-351-5672 to connect your child with a MARS evaluation. For more information on this service and other in-school services, please call the number above or visit the Parkland High School [SAP webpage](#).



**WELCOME
WINTER**

Who Will Be?
Mr. Parkland 2022

Student Auditions
will be held on the
following dates:

Monday, December 13
Tuesday, December 14
Wednesday, December 15

**3:10 PM
In Room C241**

**Mr. Parkland is scheduled
for February 12 at 7 PM**

Class dues



Class dues are a one-time-only payment of \$20 during your student's high school career. Cash or checks are acceptable forms of payment. Checks should be made payable to Parkland High School and note "Student's name, Class of 20__" in the memo line.

Class dues should always be delivered directly to your student's class advisor in their room or mailed to Parkland High School to the attention of your student's class advisor.

Class of
2022

Senior class advisor
Mrs. Sarah Yenser
Room C241
yenserc@parklandsd.org

Class of
2023

Junior class advisor
Mrs. Deborah Andreoli
Room D133
andreolid@parklandsd.org

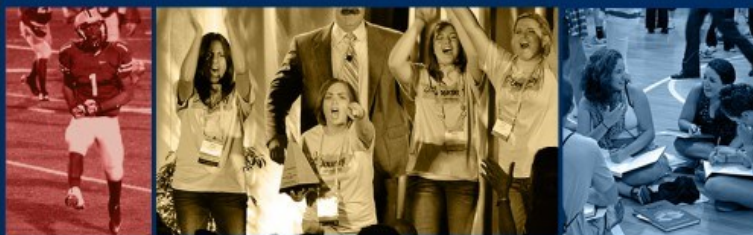
Class of
2024

Sophomore class advisor
Miss Casey Gruver
gruverc@parklandsd.org

Class of
2025

Freshmen class advisors
Mrs. Lori McClure
mclurel@parklandsd.org
Mrs. Kim McHenry
mchenryk@parklandsd.org

MORE THAN A BOOK



Fostens®

Senior dedication



The yearbook staff is once again offering dedication ads for parents and guardians to congratulate their graduating seniors. These personal messages will appear in color in the yearbook, creating another opportunity to make this yearbook memorable for the Class of 2022. Prices for these dedications start at \$55. **The deadline is December 10, 2021.**

All dedications must be submitted digitally using the Google form link [here](#). If you did not purchase a photo package from Frank Mitman, there will be a \$10 fee to have a photo sent from his studio. More details can be found on the *Par Key* website. Payment (cash or check made payable to Parkland High School) may be dropped off to Room D131 with a note including the senior's name and ID# or mailed to: Parkland High School, c/o Mrs. Destiny Beck, 2700 N. Cedar Crest Blvd., Allentown, PA 18104.

Senior PICTURE

To have a senior portrait featured in the yearbook, please schedule an appointment with Frank Mitman the official yearbook photographer, by calling 610-433-2110.

Yearbook-only photographs are free.



Portrait sessions must be scheduled by **December 22, 2021** and photographed by December 31 in order to be included in the yearbook.



Pricing and Deadlines

The yearbook costs \$85 through **March 4, 2022.**

The cost of the yearbook will be \$90 from March 5, 2022—April 29, 2022.

- Prices do not include tax
- The last day for advance orders this school year is **April 20, 2022.**

Personalization

Deadline



All *Par Key* 2022 Yearbook information is available [here](#).



SCAN ME

THE PARKLAND EDUCATION FOUNDATION IS
PROUD TO OFFER THEIR

Holiday Gift Card Sale!

Show a teacher or staff member how much you care! Purchase a \$10 gift card of your choice online and we will do the rest!



What: The Parkland Education Foundation gives you an opportunity to purchase a \$10 gift card to a local business for your **favorite teacher or staff member**.

When: All orders are due by **December 13th**. We will deliver the gift cards directly to the staff members the week of December 20th and attach a personal message from you.

Cost: The gift cards are sold in \$10 increments.

How: All you have to do is click [on this link](http://bit.do/ParklandGiftCards) to pay for and place your order(s) and include your personal gift message. Or you can visit <http://bit.do/ParklandGiftCards>.

You can purchase all your gifts at once from the comfort of your own home—we take care of the rest!

Why: The Parkland Education Foundation is always working hard to support our staff and community. Every year we provide grants to better our classrooms, raise funds to support the community, and work to ensure our schools have the tools they need to best educate our students. The money raised will help us continue with our efforts to assist our community, all while supporting our local businesses.

Cross one more thing off your to-do list while giving to a worthwhile cause at the same time!

Thank you for your support!



Parkland School District

Education Foundation

PreServing Excellence. Building a Dream

www.parklandsd.org/foundation

Order by
December 13



Give to Post Prom
this Holiday Season

Become a Sponsor or Donate
Funds to Help Keep our Kids
Safe on Prom Night.



DONATE

P.J. WHELIHAN'S PUB



AT THE WALBERT

Eat at PJ's at the
Walbert by dining in,
taking out, or placing a
car order on the dates
shown.

Mention Parkland Post
Prom and a portion of the
proceeds will benefit
Parkland's Post Prom Party.



December 9

January 13

February 10

March 10

April 14



P.J. WHELIHAN'S
PUB + RESTAURANT



Happy
Holidays

