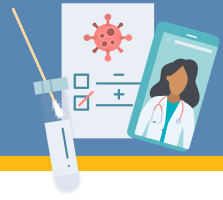


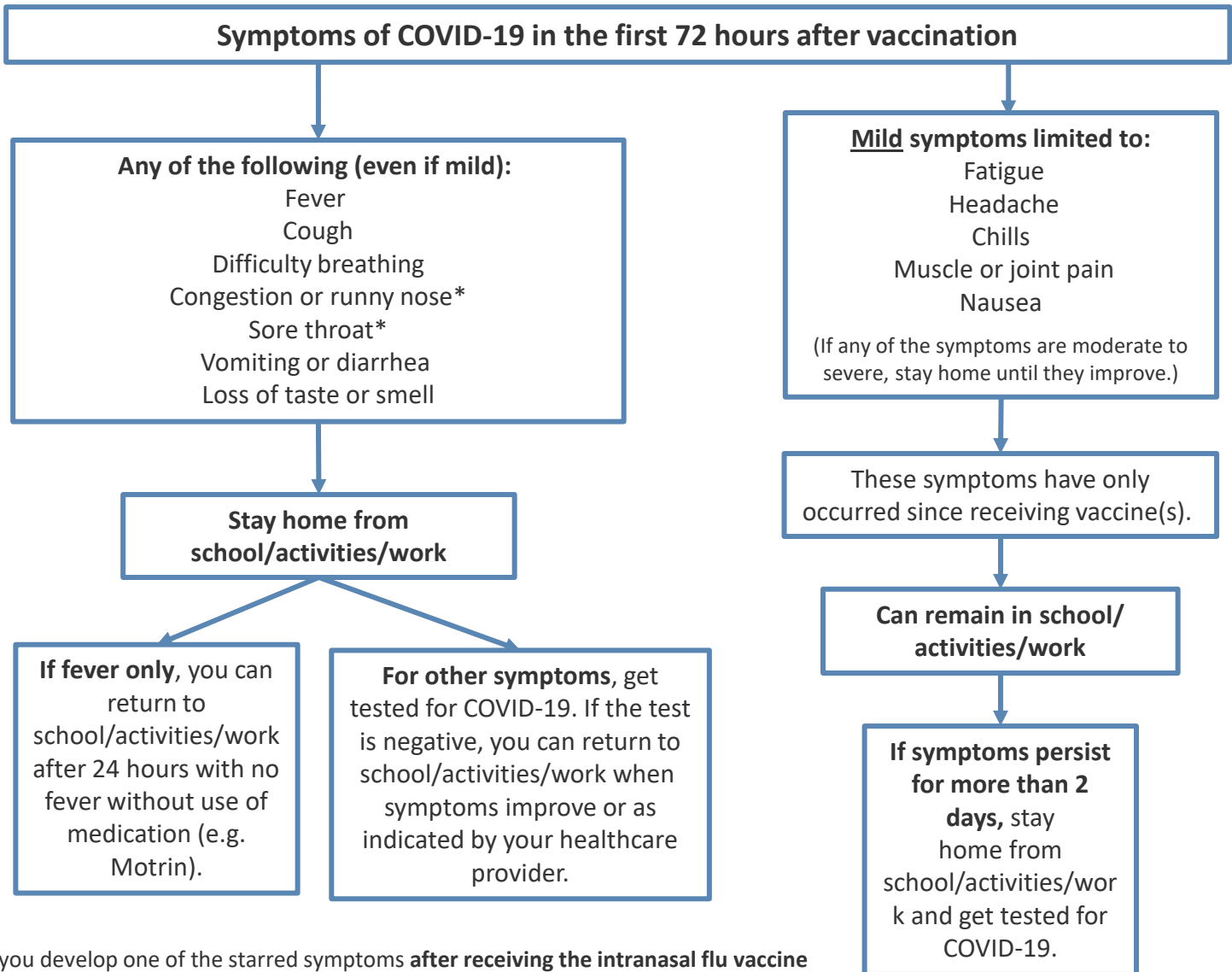
# Guidance for Symptoms after Vaccination

What to do if students or staff have symptoms after COVID-19 or flu vaccines



This guidance is for students or staff with symptoms who have received a COVID-19 and/or flu vaccine in the prior 72 hours and have NOT had a [close contact](#) with a COVID-19+ person during the previous 14 days.

- Students or staff who have symptoms after vaccination and are within 14 days of a close contact should be excluded from school/activities/work and get tested for COVID-19.
- Students or staff with symptoms that begin more than 72 hours after vaccination should be excluded from school/activities/work and get tested for COVID-19.



\*If you develop one of the starred symptoms **after receiving the intranasal flu vaccine only**, you may remain in school/activities/work if your symptoms are mild.

**If symptoms persist for more than 2 days**, stay home from school/activities/work and get tested for COVID-19.



**ALAMEDA COUNTY HEALTH CARE SERVICES AGENCY  
PUBLIC HEALTH DEPARTMENT**

Colleen Chawla – Agency Director  
Kimi Watkins-Tartt – Director  
Nicholas Moss, MD – Health Officer

Contact  
Public Health Department:  
(510) 267-8000 Main Line  
COVID-19 Information:  
(510) 268-2101