

CHARLES COUNTY PUBLIC SCHOOLS COMPREHENSIVE MIDDLE SCHOOL REDISTRICTING SCHOOL YEAR 2022-2023

SUPERINTENDENT'S AMENDED RECOMMENDATION PLAN

NOVEMBER 9, 2021



BENJAMIN STODDERT MIDDLE SCHOOL

- \$48,171,000 renovation and addition
- Square footage increases from 105,800 to 148,317 square feet
- State Rated Capacity (SRC) increases from 711 to 975
- Phased occupied construction to be completed in the Fall of 2022





Superintendent's Charge

The committee is charged with creating two alternatives that will establish new middle school boundaries. This is a comprehensive middle school redistricting with a focus on redrawing an expanded attendance zone for Benjamin Stoddert which is receiving a complete renovation and expansion scheduled for completion for the start of SY 22/23.

Board Policy 1900 establishes procedures for redistricting. Our goal is to move some students among all middle schools with due consideration of State Rated Capacities (SRCs) and anticipated growth using target enrollments provided by school and county government staffs.

General Guidelines

- All neighborhoods are eligible for redistricting except for those currently designated as non-transport (walking) zones
- Whenever possible, neighborhoods should not be divided between different schools
- Account for current and future residential development when meeting enrollment targets
- Consult with transportation representatives regarding the possible effects to existing bus routes when moving students
- When proposing changes to existing school zones, move students farthest from their current school to another school whose current attendance boundaries borders the existing school

Timeline

October 2020	Redistricting committee selected. Public Information Town Hall session held October 26, virtually.
November 2020	Redistricting committee began meeting weekly. Meetings paused due to COVID-19 pandemic.
May 2021	Committee resumed its weekly meetings.
July 2021	Redistricting committee completed work.
August 2021	Board received a report on committee's recommendations on Aug. 10. Public hearings were held Monday, Aug. 23, 2021 from 6 to 8 p.m., virtually, and Tuesday, Aug. 24, 2021 from 6:30 to 8:30 p.m. at La Plata High School.
September 2021	Public hearing conducted on Tuesday, September 7 from 6 to 8 p.m. via Zoom. Superintendent presented recommendation to the Board at its Sept. 14 meeting. Public hearings were held on Monday, Sept. 27, 2021, from 6:30 to 8:30 p.m. at Westlake High School and Tuesday, Sept. 28, 2021, from 6 to 8 p.m., virtually.
October 2021	A motion and a second were made to adopt Plan A. Subsequently, a second motion was made by a Board member to modify the proposed plan. The second motion did not move forward. The vote for the original motion to adopt Plan A did not receive a majority vote. Superintendent's modified redistricting proposal will be presented at the November 9, 2021 Board meeting. It is expected that the Board will take action to accept a plan. Redistricting will take effect in August of 2022 for school year 2022-2023.



Redistricting Committee

The Board at its Oct. 13, 2020 meeting selected 11 parents through a random drawing to serve on the committee – two elementary, one high school and eight from the middle schools. Additionally, the Board of Education selected three community members at large for the committee and four school principals.

Three local government planners and CCPS staff support the committee.

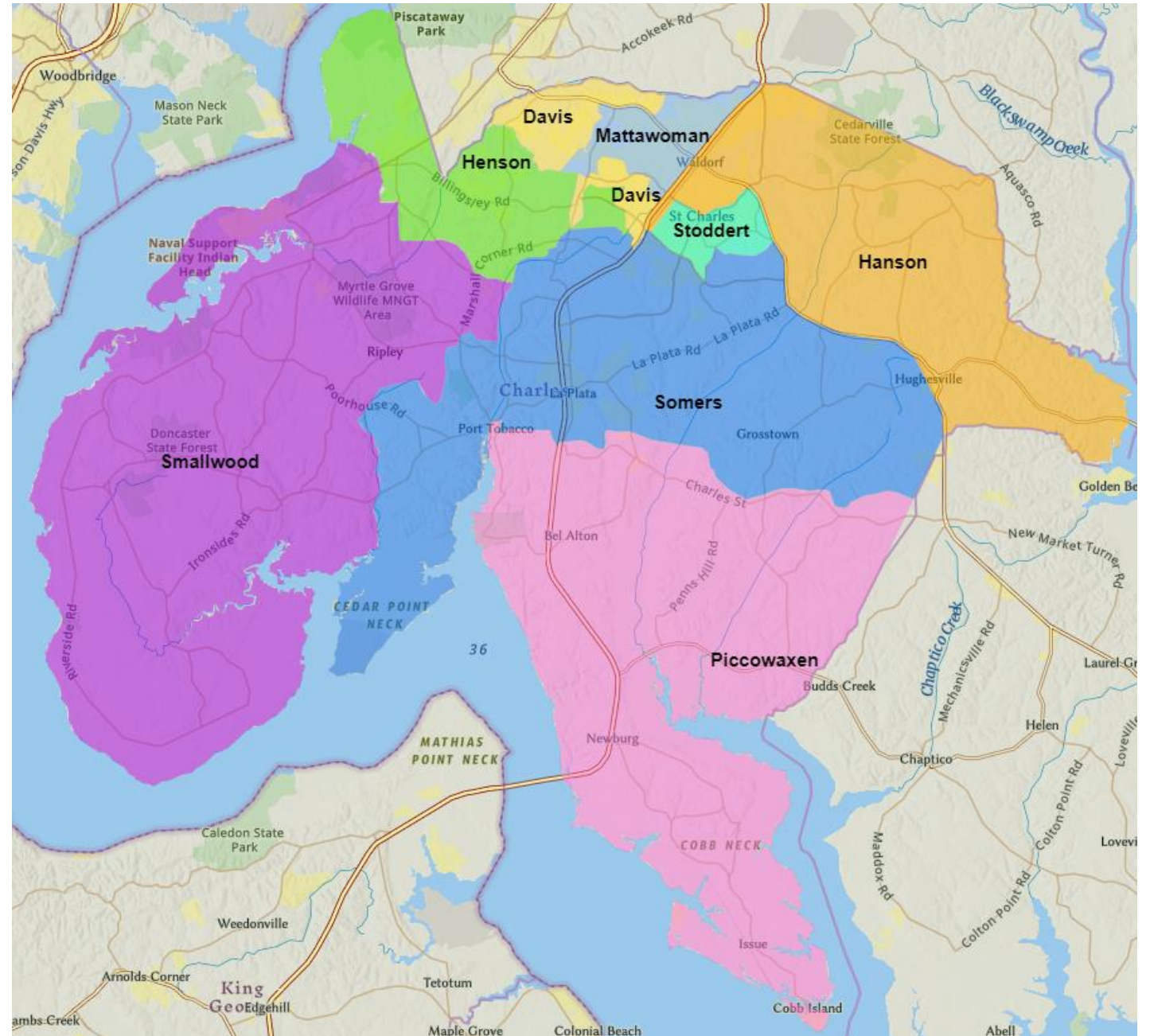


Superintendent's Recommendation

The Superintendent recommends an amended version of Alternative A by moving blocks 3971 and 3451 to Piccowaxen Middle School from Milton M. Somers Middle School.

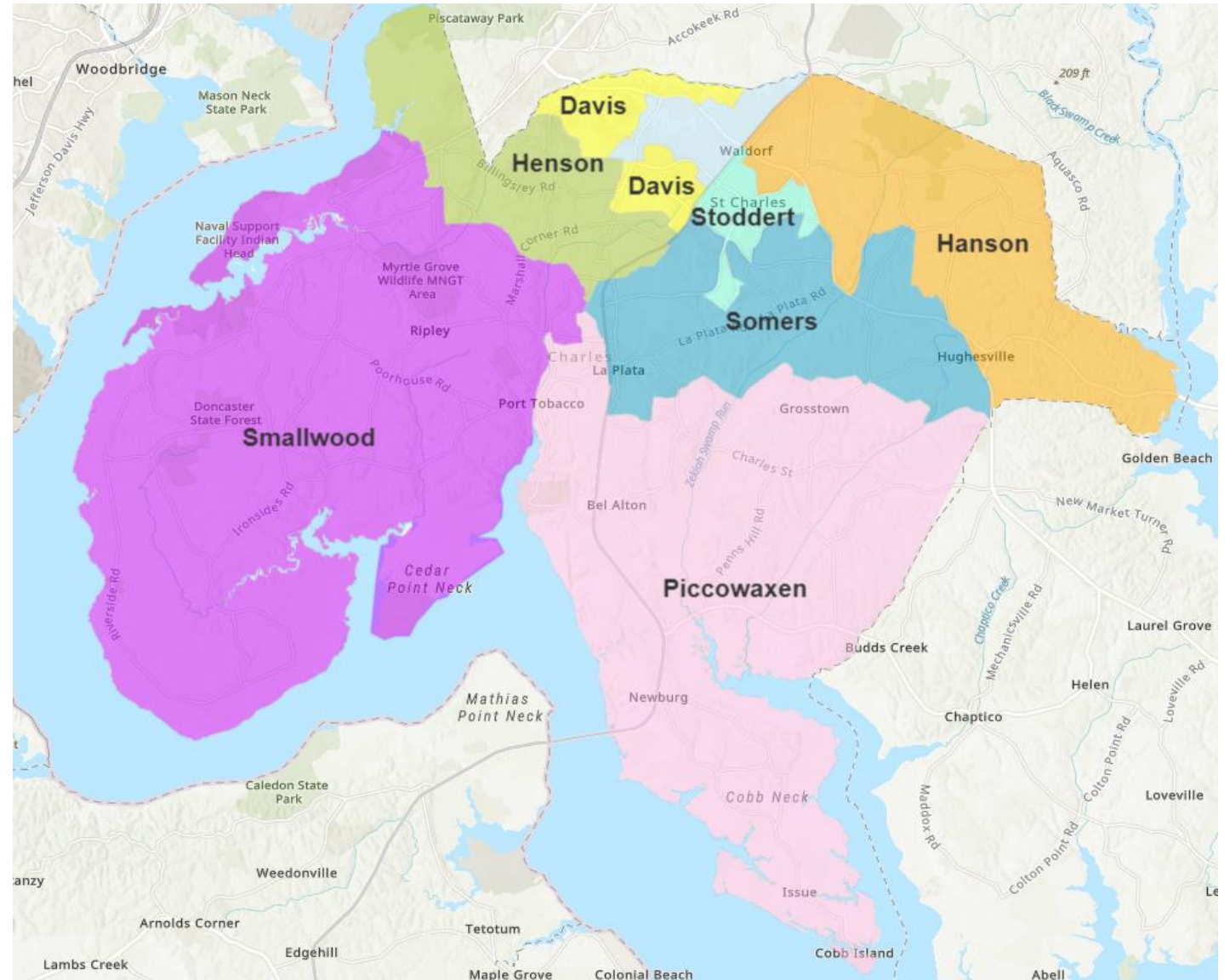
- Amended plan moves blocks 3971 and 3451 from Milton Somers Middle School to Piccowaxen Middle School with no other changes to the six other middle schools
- Better balance of growth areas (St. Charles and Heritage Green) between Benjamin Stoddert Middle School and Milton Somers Middle School
- Better use of the added capacity at Benjamin Stoddert Middle School
- MS enrollment in the development district is at or near State Rated Capacity (SRC) to support future MS #9
- Plan A moves less existing students

Current CCPS Middle School Zones



Overview of Amended Alternative A

Alternative A
moves 1,007
students.



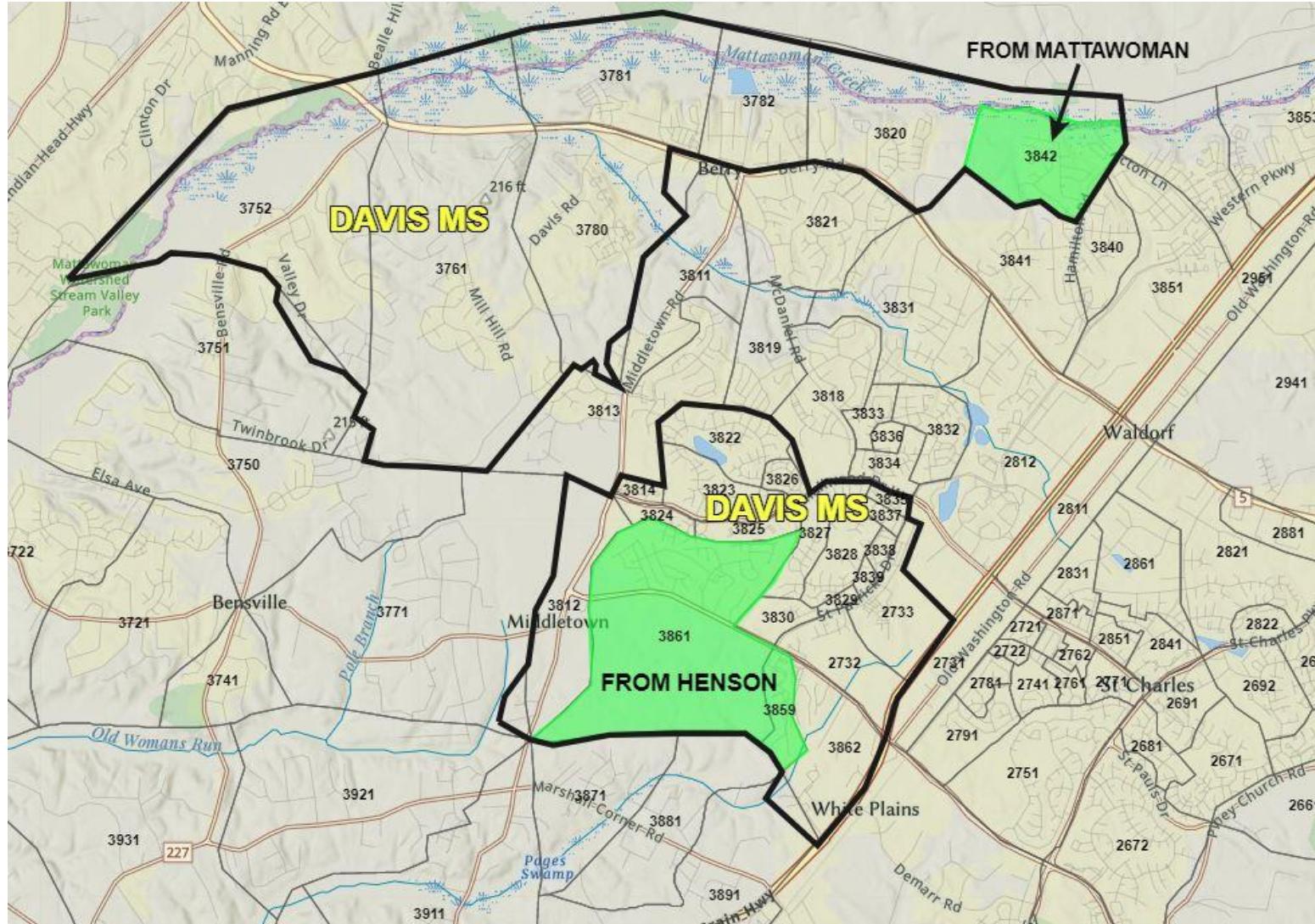
Davis Zone – Changes Alternative A

State Rated
Capacity (SRC):

997

Official Enrollment
(9/30/19):

885



SY2022-23:

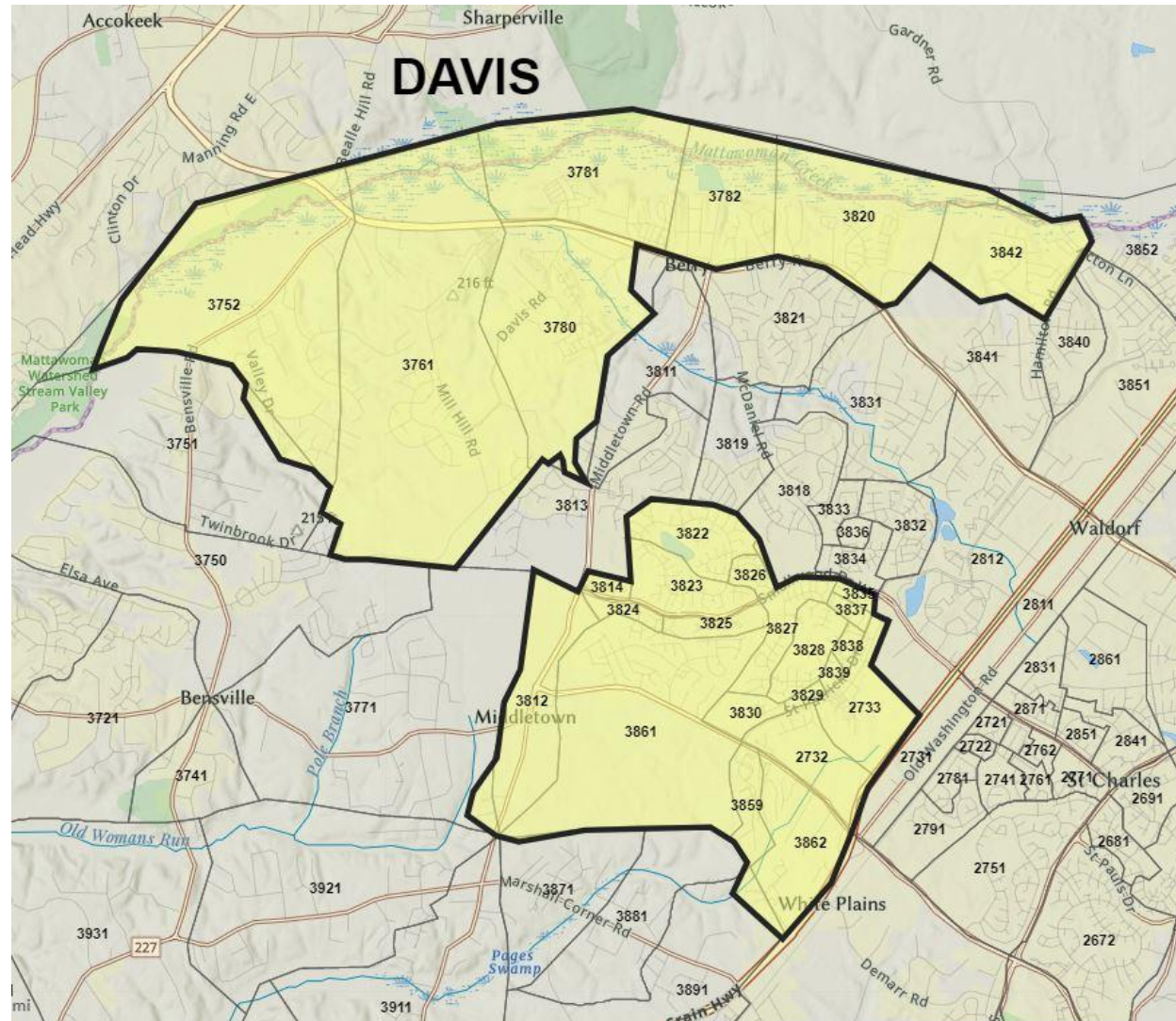
934

SY2025-26:

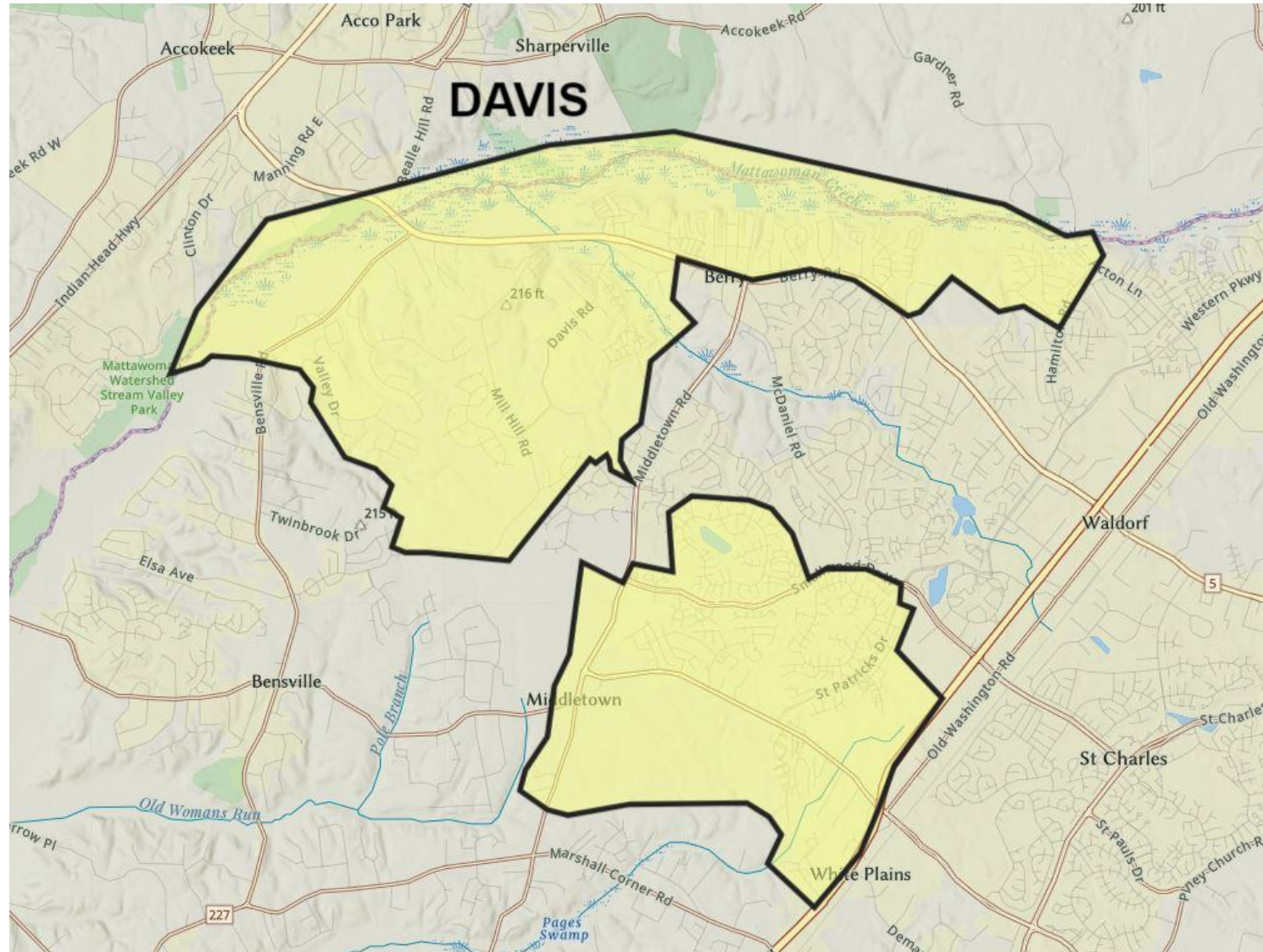
950

New Davis Zone with Enrollment Blocks

Alternative A



New Davis Zone Alternative A



Hanson Zone – Changes

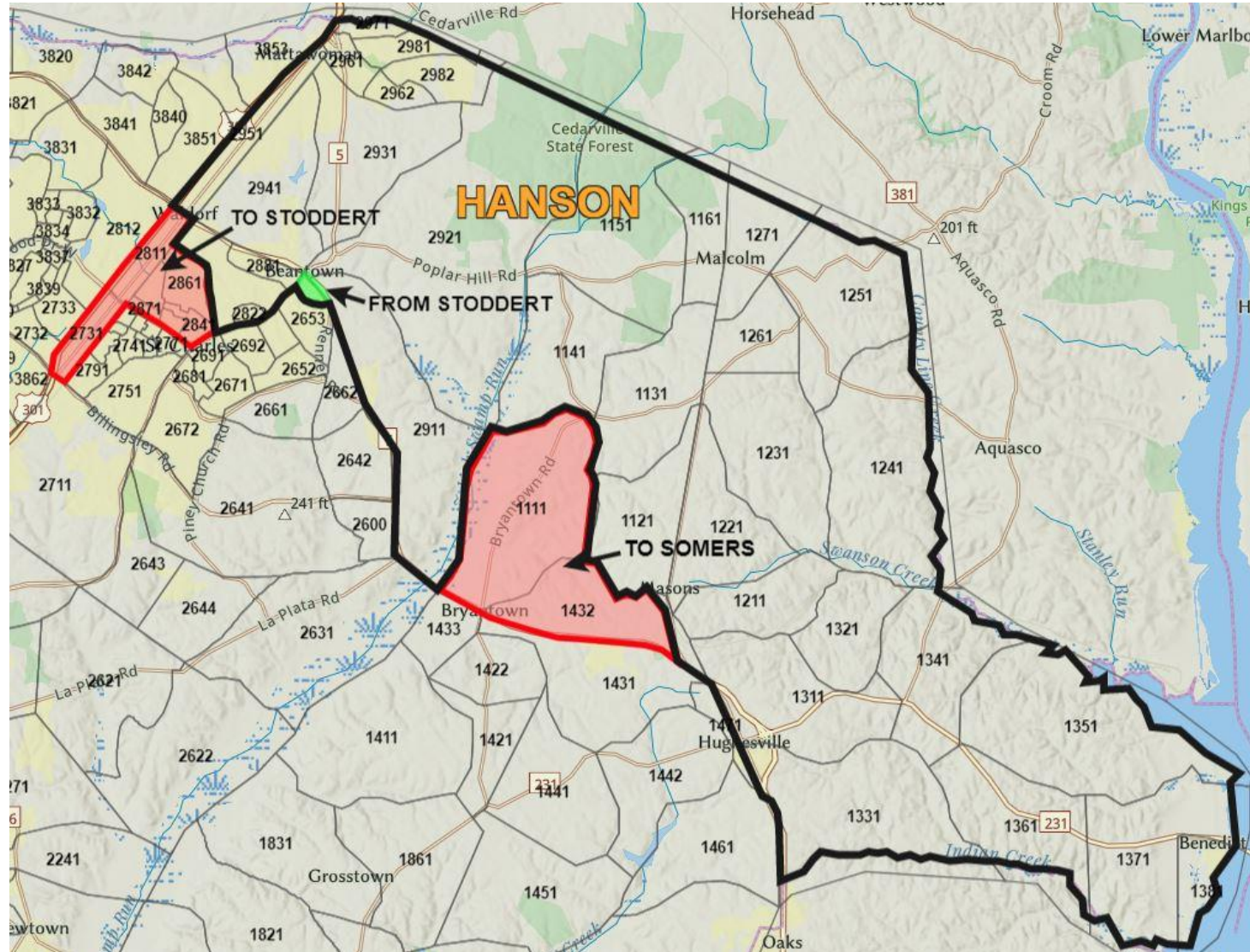
Alternative A

State Rated Capacity
(SRC):

797

Official Enrollment
(9/30/19):

893



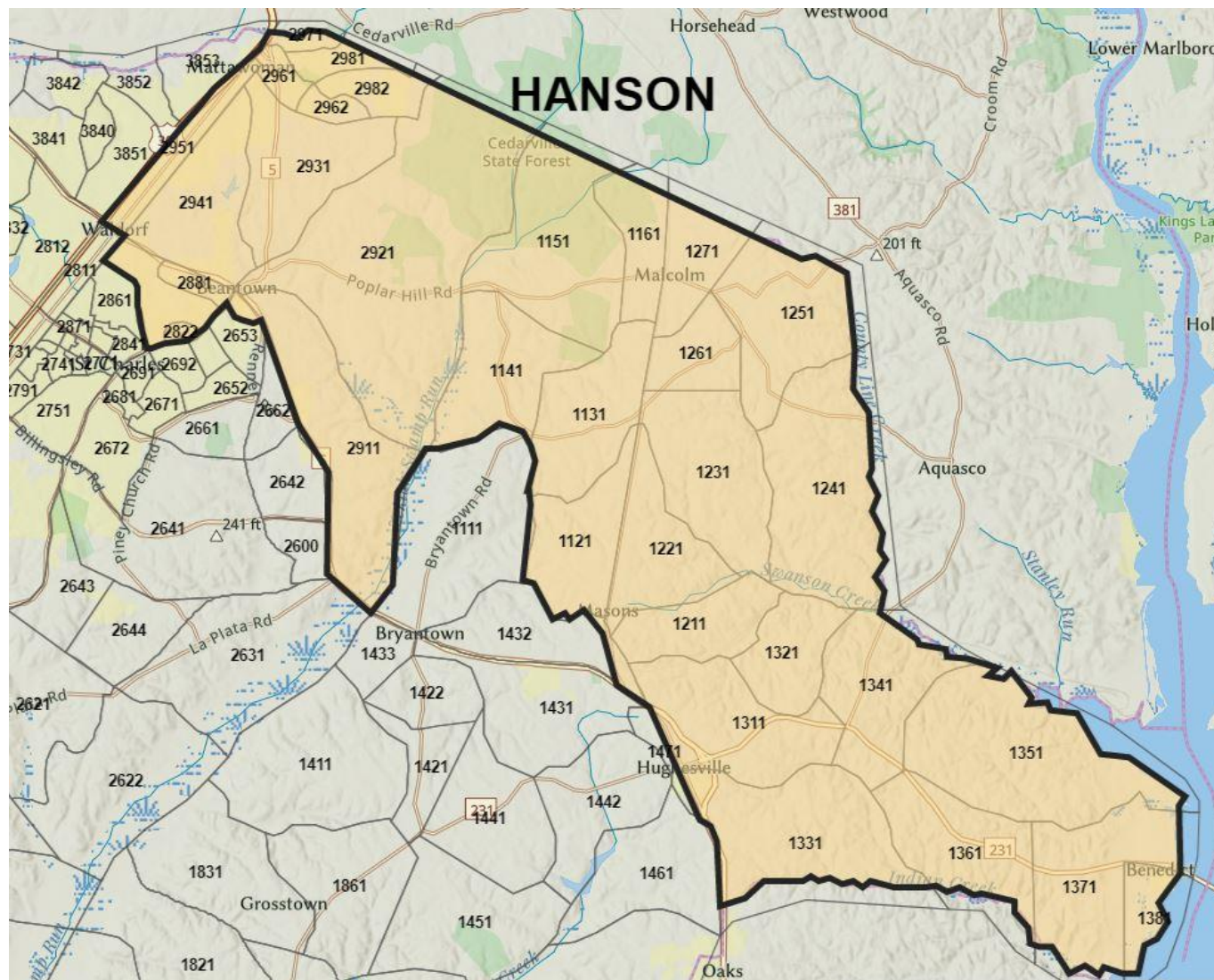
SY2022-23:

805

SY2025-26:

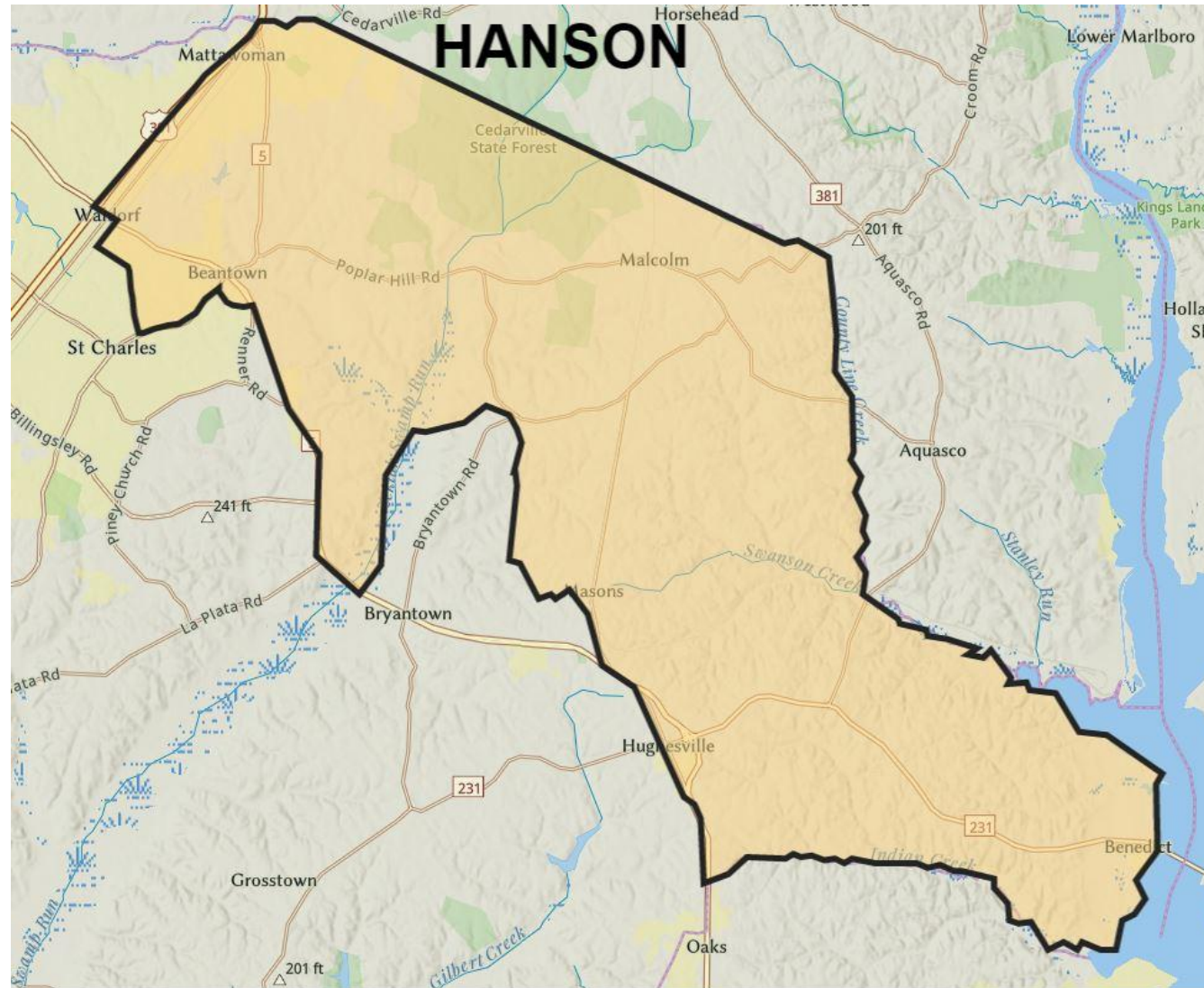
833

New Hanson Zone with Enrollment Blocks Alternative A



New Hanson Zone

Alternative A



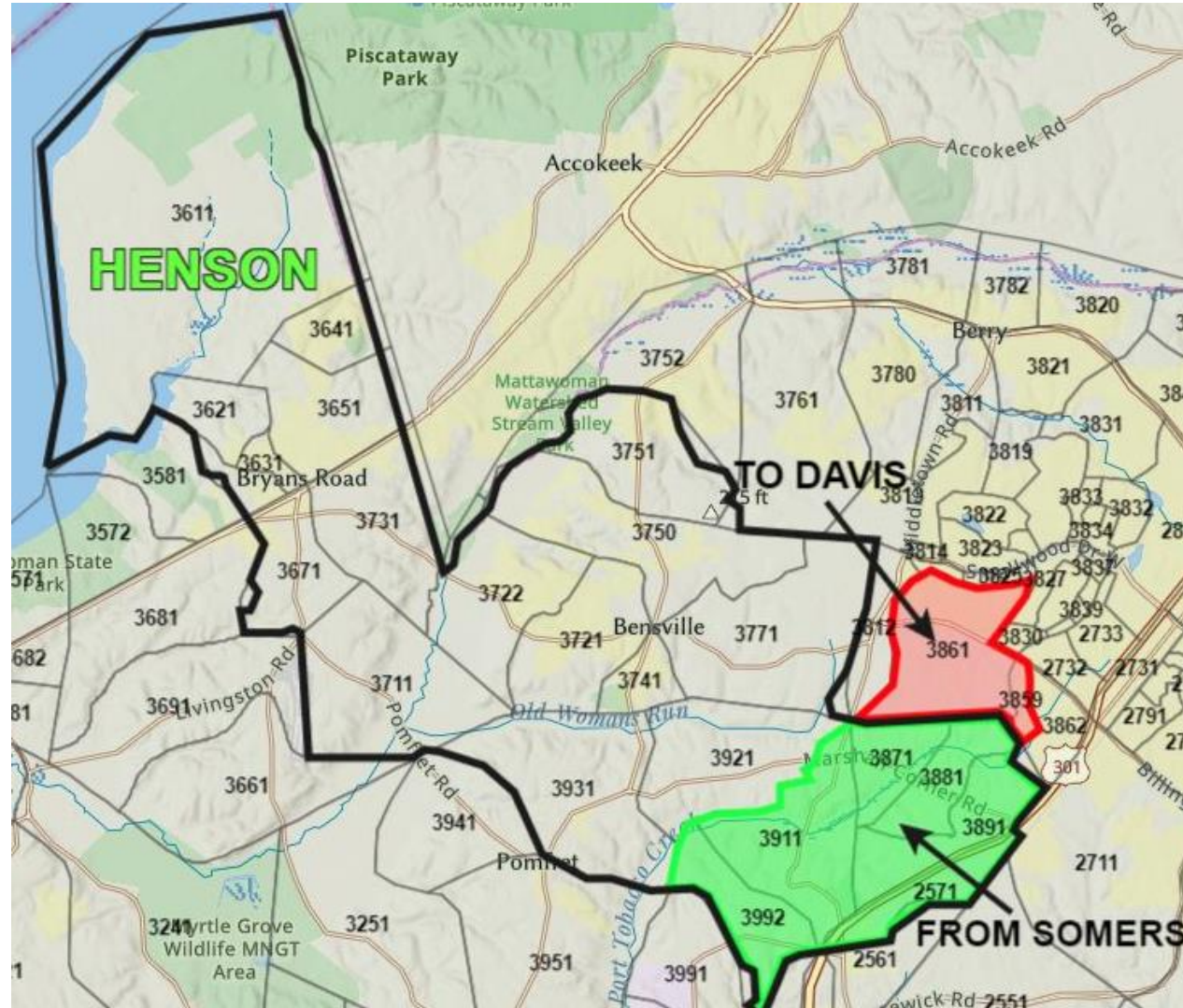
Henson Zone – Changes Alternative A

State Rated Capacity
(SRC):

668

Official Enrollment
(9/30/19):

811



SY2022-23:

654

SY2025-26:

666

New Henson Zone with Enrollment Blocks

Alternative A



New Henson Zone

Alternative A



Mattawoman Zone – Changes

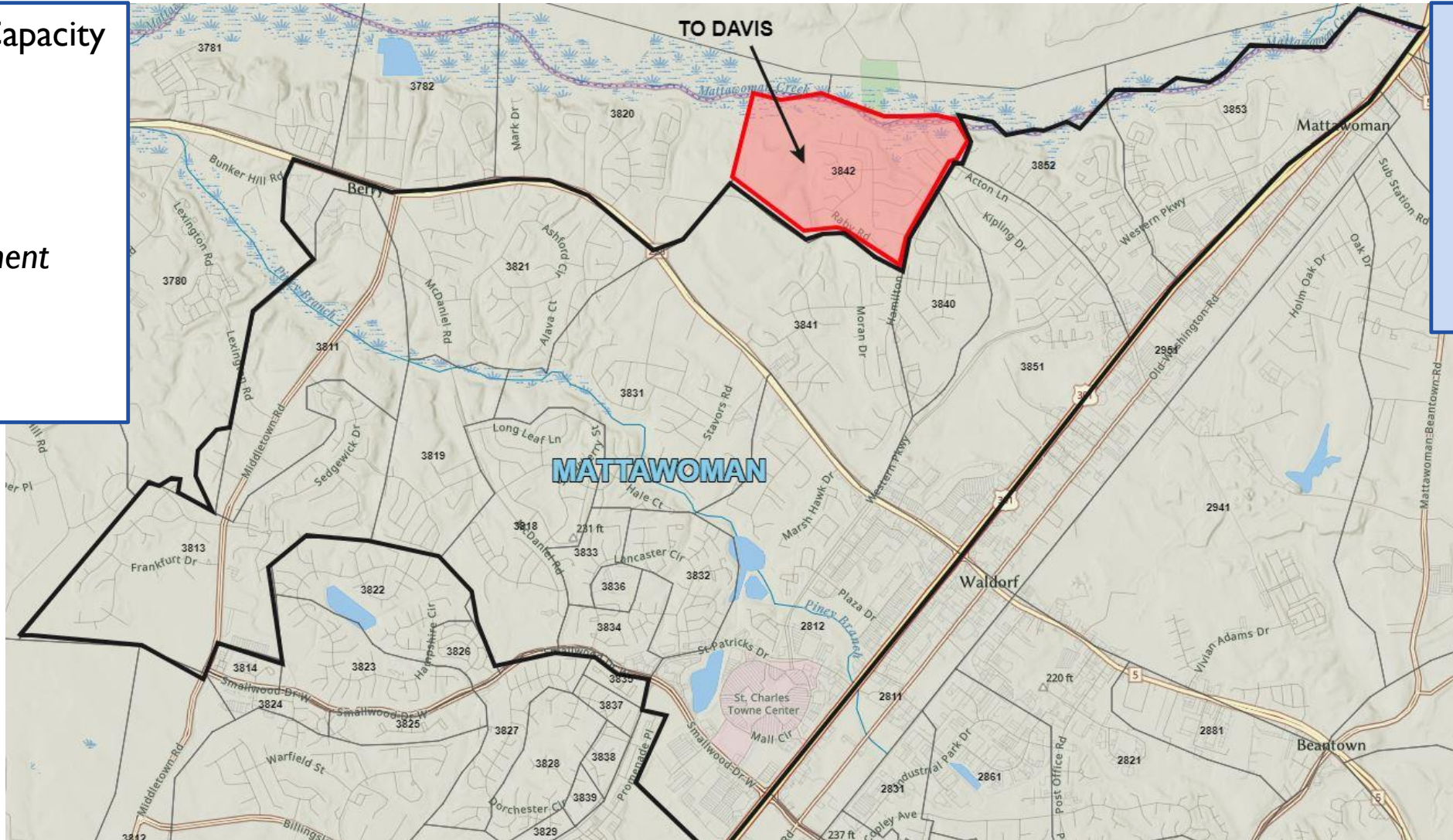
Alternative A

State Rated Capacity
(SRC):

912

Official Enrollment
(9/30/19):

1026



SY2022-23:

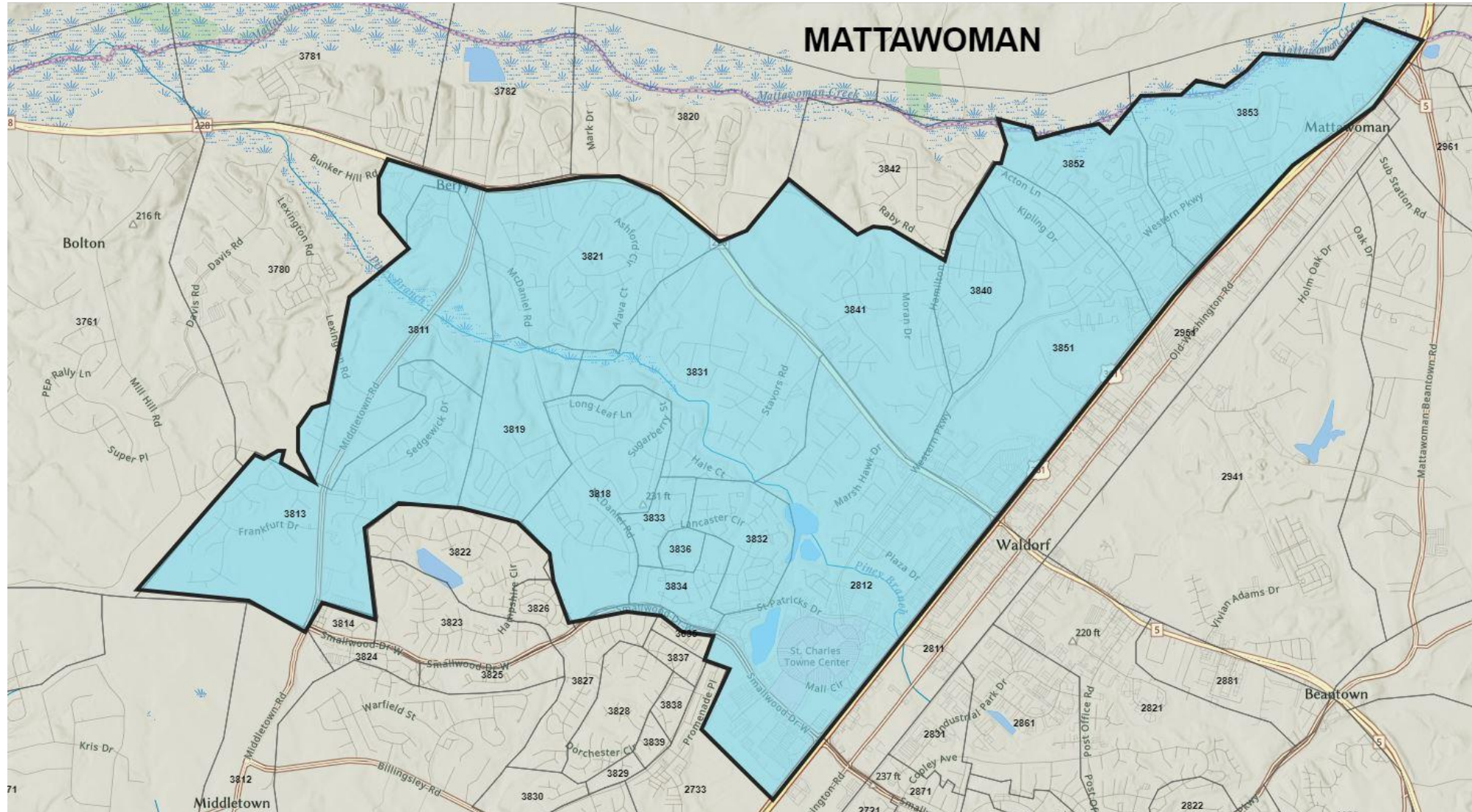
915

SY2025-26:

943

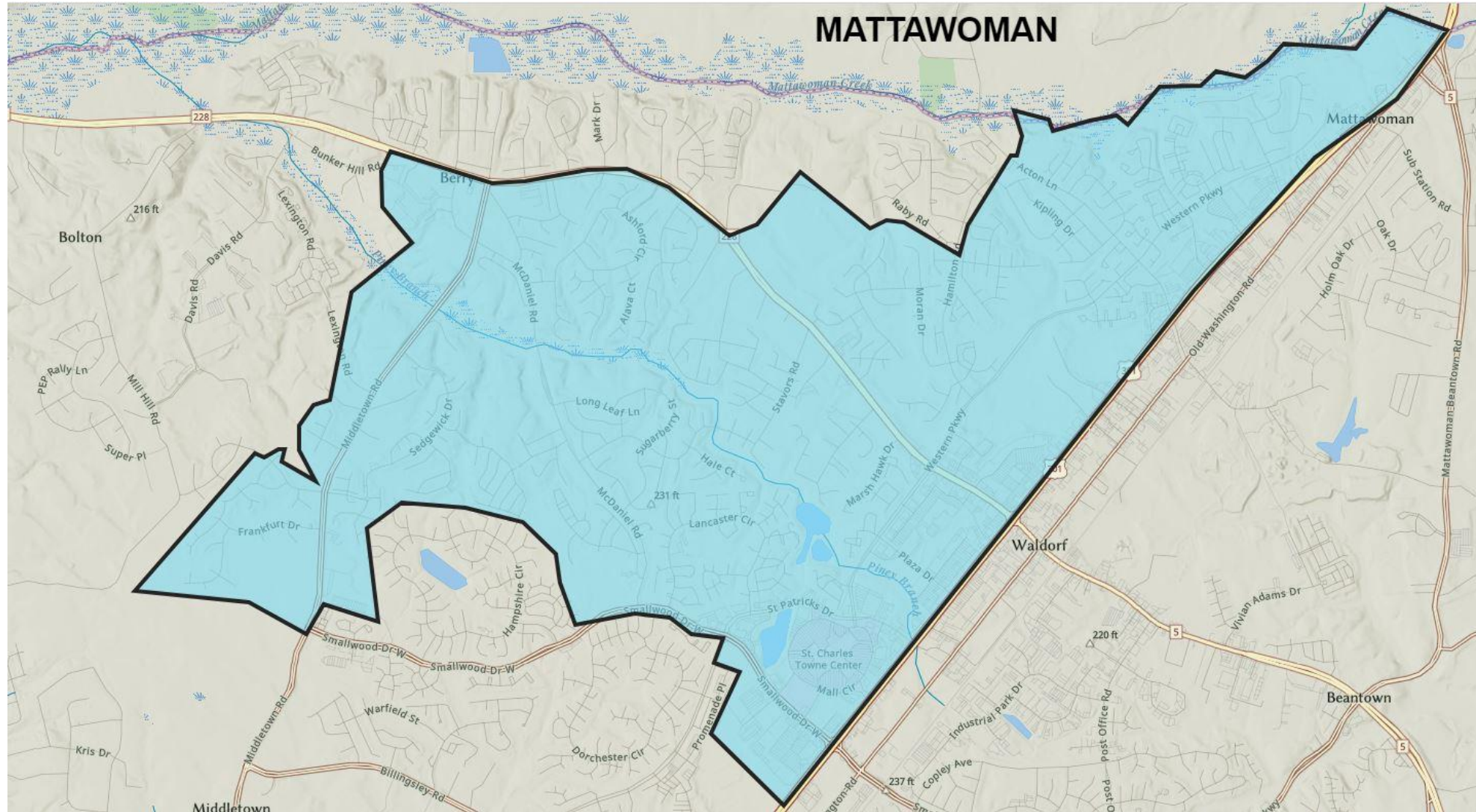
New Mattawoman Zone with Enrollment Blocks

Alternative A



New Mattawoman Zone

Alternative A



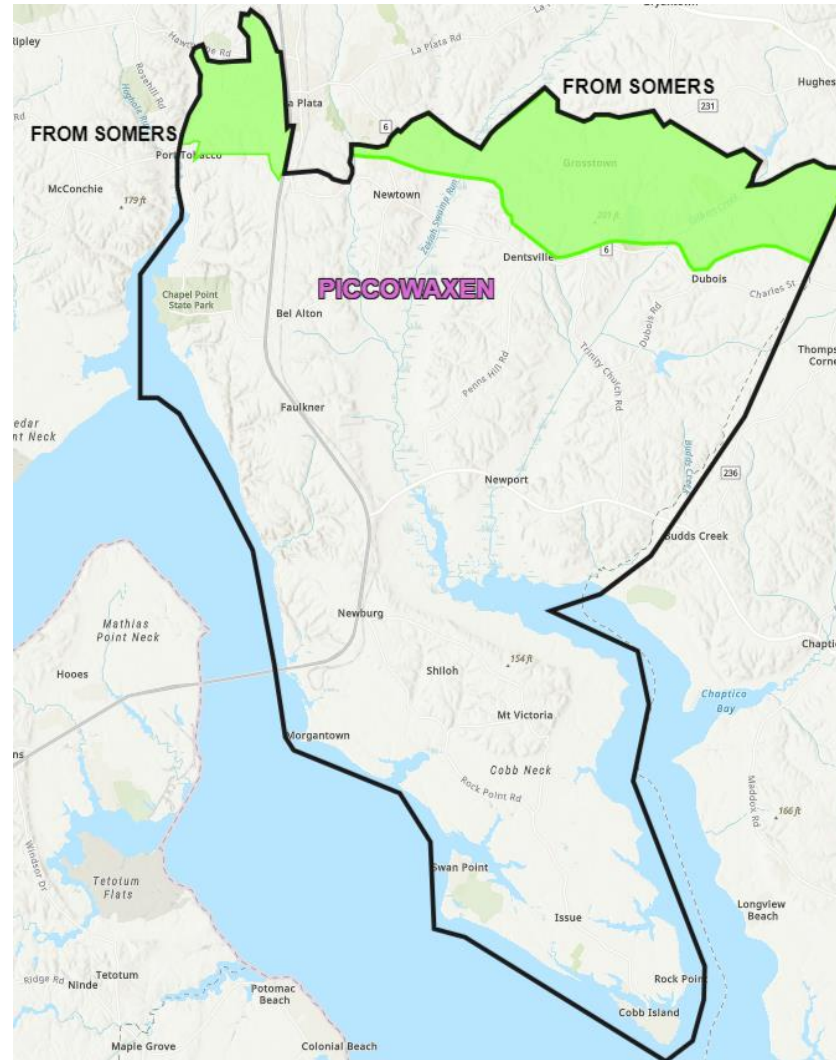
Piccowaxen Zone – Changes Alternative A

State Rated Capacity
(SRC):

563

Official Enrollment
(9/30/19):

450



SY2022-23:

569

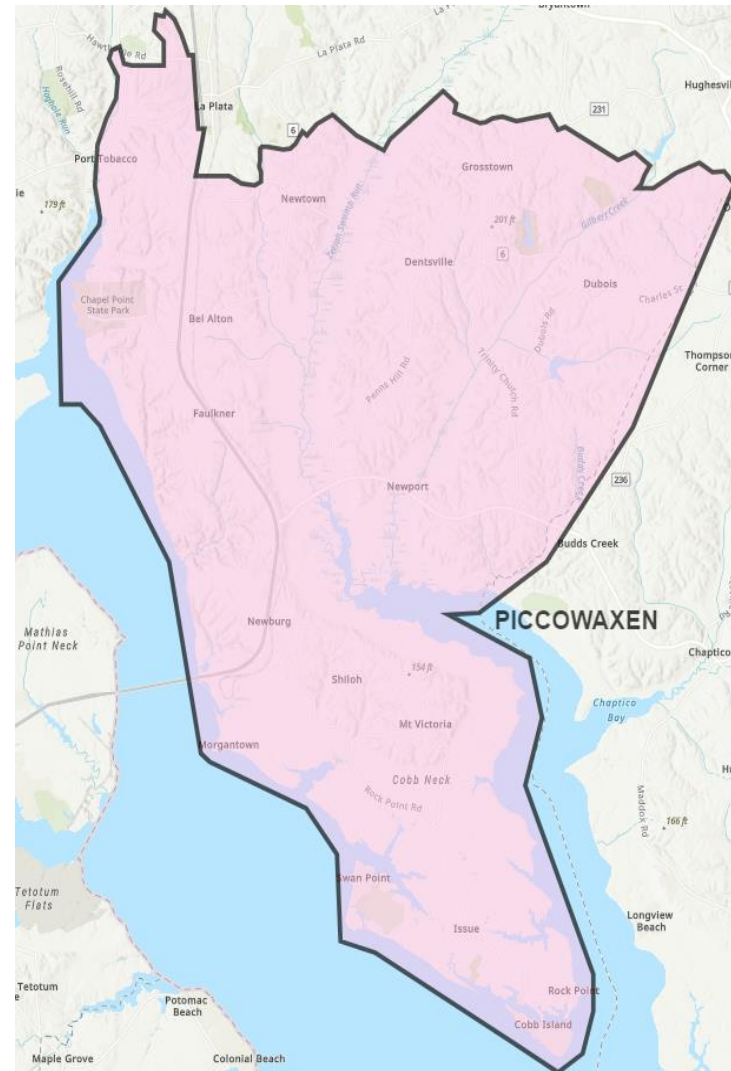
SY2025-26:

587

A detailed map of the Piccowaxen area, showing numerous lots numbered with 4-digit codes (e.g., 3961, 2541, 2531, 2611, 2621, 2622, 1411, 1421, 1441, 1442, 1461, 1471, 1481, 1482, 1483, 1484, 1485, 1486, 1487, 1488, 1489, 1490, 1491, 1492, 1493, 1494, 1495, 1496, 1497, 1498, 1499, 1500, 1501, 1502, 1503, 1504, 1505, 1506, 1507, 1508, 1509, 1510, 1511, 1512, 1513, 1514, 1515, 1516, 1517, 1518, 1519, 1520, 1521, 1522, 1523, 1524, 1525, 1526, 1527, 1528, 1529, 1530, 1531, 1532, 1533, 1534, 1535, 1536, 1537, 1538, 1539, 1540, 1541, 1542, 1543, 1544, 1545, 1546, 1547, 1548, 1549, 1550, 1551, 1552, 1553, 1554, 1555, 1556, 1557, 1558, 1559, 1560, 1561, 1562, 1563, 1564, 1565, 1566, 1567, 1568, 1569, 1570, 1571, 1572, 1573, 1574, 1575, 1576, 1577, 1578, 1579, 1580, 1581, 1582, 1583, 1584, 1585, 1586, 1587, 1588, 1589, 1590, 1591, 1592, 1593, 1594, 1595, 1596, 1597, 1598, 1599, 1600, 1601, 1602, 1603, 1604, 1605, 1606, 1607, 1608, 1609, 1610, 1611, 1612, 1613, 1614, 1615, 1616, 1617, 1618, 1619, 1620, 1621, 1622, 1623, 1624, 1625, 1626, 1627, 1628, 1629, 1630, 1631, 1632, 1633, 1634, 1635, 1636, 1637, 1638, 1639, 1640, 1641, 1642, 1643, 1644, 1645, 1646, 1647, 1648, 1649, 1650, 1651, 1652, 1653, 1654, 1655, 1656, 1657, 1658, 1659, 1660, 1661, 1662, 1663, 1664, 1665, 1666, 1667, 1668, 1669, 1670, 1671, 1672, 1673, 1674, 1675, 1676, 1677, 1678, 1679, 1680, 1681, 1682, 1683, 1684, 1685, 1686, 1687, 1688, 1689, 1690, 1691, 1692, 1693, 1694, 1695, 1696, 1697, 1698, 1699, 1700, 1701, 1702, 1703, 1704, 1705, 1706, 1707, 1708, 1709, 1710, 1711, 1712, 1713, 1714, 1715, 1716, 1717, 1718, 1719, 1720, 1721, 1722, 1723, 1724, 1725, 1726, 1727, 1728, 1729, 1730, 1731, 1732, 1733, 1734, 1735, 1736, 1737, 1738, 1739, 1740, 1741, 1742, 1743, 1744, 1745, 1746, 1747, 1748, 1749, 1750, 1751, 1752, 1753, 1754, 1755, 1756, 1757, 1758, 1759, 1760, 1761, 1762, 1763, 1764, 1765, 1766, 1767, 1768, 1769, 1770, 1771, 1772, 1773, 1774, 1775, 1776, 1777, 1778, 1779, 1780, 1781, 1782, 1783, 1784, 1785, 1786, 1787, 1788, 1789, 1790, 1791, 1792, 1793, 1794, 1795, 1796, 1797, 1798, 1799, 1800, 1801, 1802, 1803, 1804, 1805, 1806, 1807, 1808, 1809, 1810, 1811, 1812, 1813, 1814, 1815, 1816, 1817, 1818, 1819, 1820, 1821, 1822, 1823, 1824, 1825, 1826, 1827, 1828, 1829, 1830, 1831, 1832, 1833, 1834, 1835, 1836, 1837, 1838, 1839, 1840, 1841, 1842, 1843, 1844, 1845, 1846, 1847, 1848, 1849, 1850, 1851, 1852, 1853, 1854, 1855, 1856, 1857, 1858, 1859, 1860, 1861, 1862, 1863, 1864, 1865, 1866, 1867, 1868, 1869, 1870, 1871, 1872, 1873, 1874, 1875, 1876, 1877, 1878, 1879, 1880, 1881, 1882, 1883, 1884, 1885, 1886, 1887, 1888, 1889, 1890, 1891, 1892, 1893, 1894, 1895, 1896, 1897, 1898, 1899, 1900, 1901, 1902, 1903, 1904, 1905, 1906, 1907, 1908, 1909, 1910, 1911, 1912, 1913, 1914, 1915, 1916, 1917, 1918, 1919, 1920, 1921, 1922, 1923, 1924, 1925, 1926, 1927, 1928, 1929, 1930, 1931, 1932, 1933, 1934, 1935, 1936, 1937, 1938, 1939, 1940, 1941, 1942, 1943, 1944, 1945, 1946, 1947, 1948, 1949, 1950, 1951, 1952, 1953, 1954, 1955, 1956, 1957, 1958, 1959, 1960, 1961, 1962, 1963, 1964, 1965, 1966, 1967, 1968, 1969, 1970, 1971, 1972, 1973, 1974, 1975, 1976, 1977, 1978, 1979, 1980, 1981, 1982, 1983, 1984, 1985, 1986, 1987, 1988, 1989, 1990, 1991, 1992, 1993, 1994, 1995, 1996, 1997, 1998, 1999, 2000, 2001, 2002, 2003, 2004, 2005, 2006, 2007, 2008, 2009, 2010, 2011, 2012, 2013, 2014, 2015, 2016, 2017, 2018, 2019, 2020, 2021, 2022, 2023, 2024, 2025, 2026, 2027, 2028, 2029, 2030, 2031, 2032, 2033, 2034, 2035, 2036, 2037, 2038, 2039, 2040, 2041, 2042, 2043, 2044, 2045, 2046, 2047, 2048, 2049, 2050, 2051, 2052, 2053, 2054, 2055, 2056, 2057, 2058, 2059, 2060, 2061, 2062, 2063, 2064, 2065, 2066, 2067, 2068, 2069, 2070, 2071, 2072, 2073, 2074, 2075, 2076, 2077, 2078, 2079, 2080, 2081, 2082, 2083, 2084, 2085, 2086, 2087, 2088, 2089, 2090, 2091, 2092, 2093, 2094, 2095, 2096, 2097, 2098, 2099, 2100, 2101, 2102, 2103, 2104, 2105, 2106, 2107, 2108, 2109, 2110, 2111, 2112, 2113, 2114, 2115, 2116, 2117, 2118, 2119, 2120, 2121, 2122, 2123, 2124, 2125, 2126, 2127, 2128, 2129, 2130, 2131, 2132, 2133, 2134, 2135, 2136, 2137, 2138, 2139, 2140, 2141, 2142, 2143, 21

New Piccowaxen Zone

Alternative A



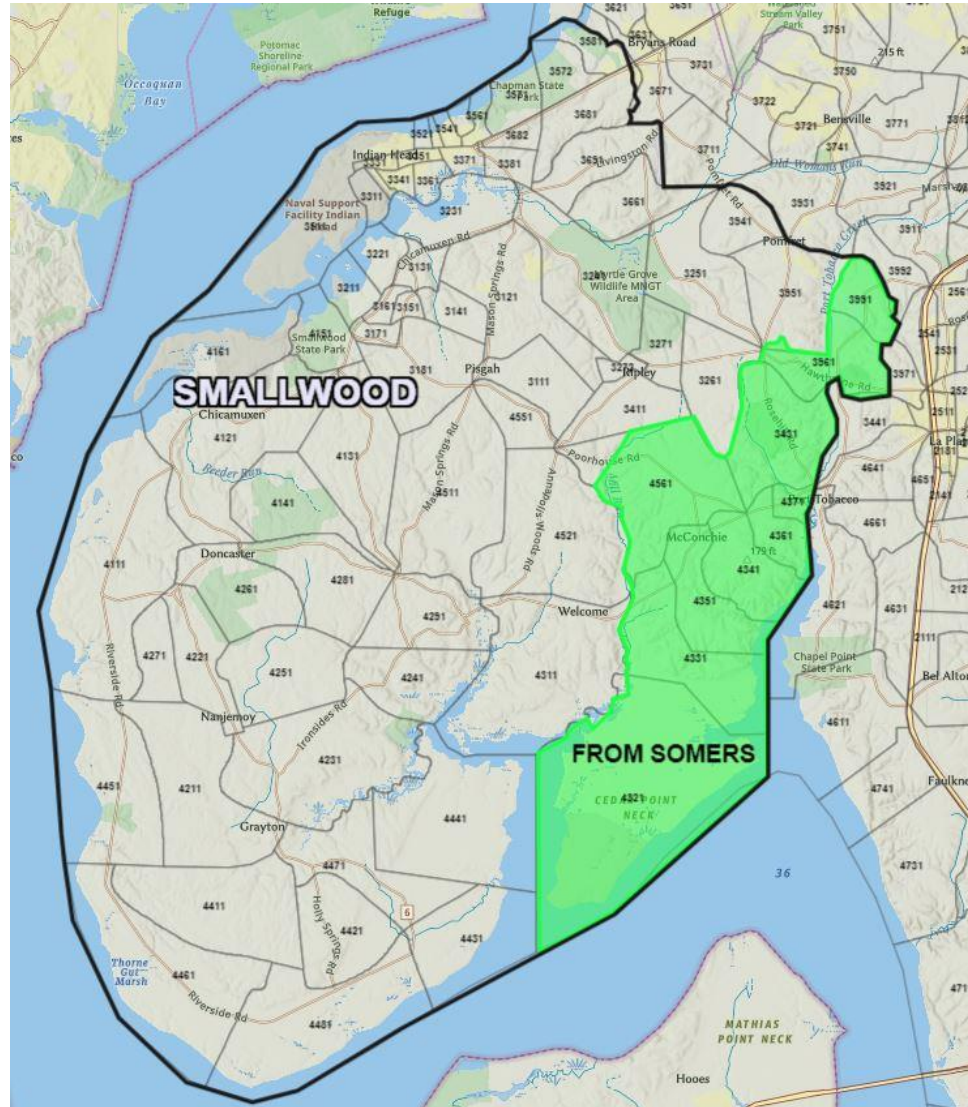
Smallwood Zone – Changes Alternative A

State Rated Capacity
(SRC):

604

Official Enrollment
(9/30/19):

527



SY2022-23:

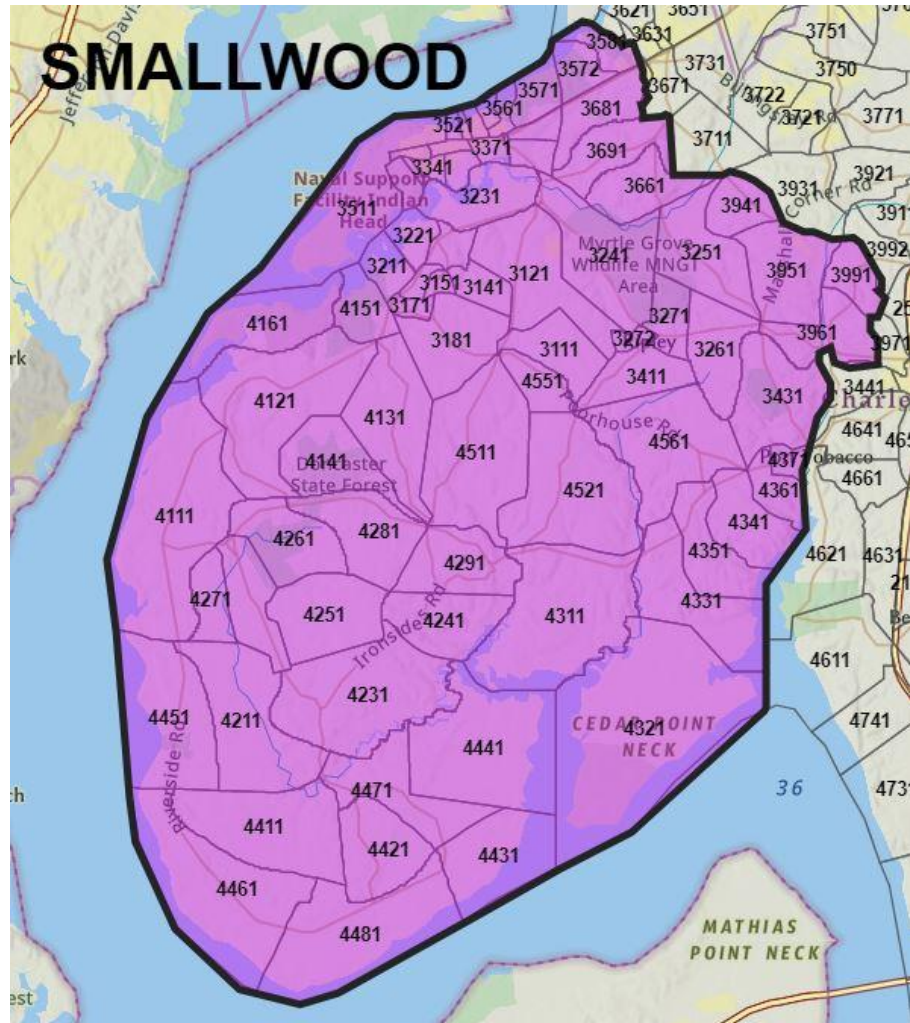
555

SY2025-26:

561

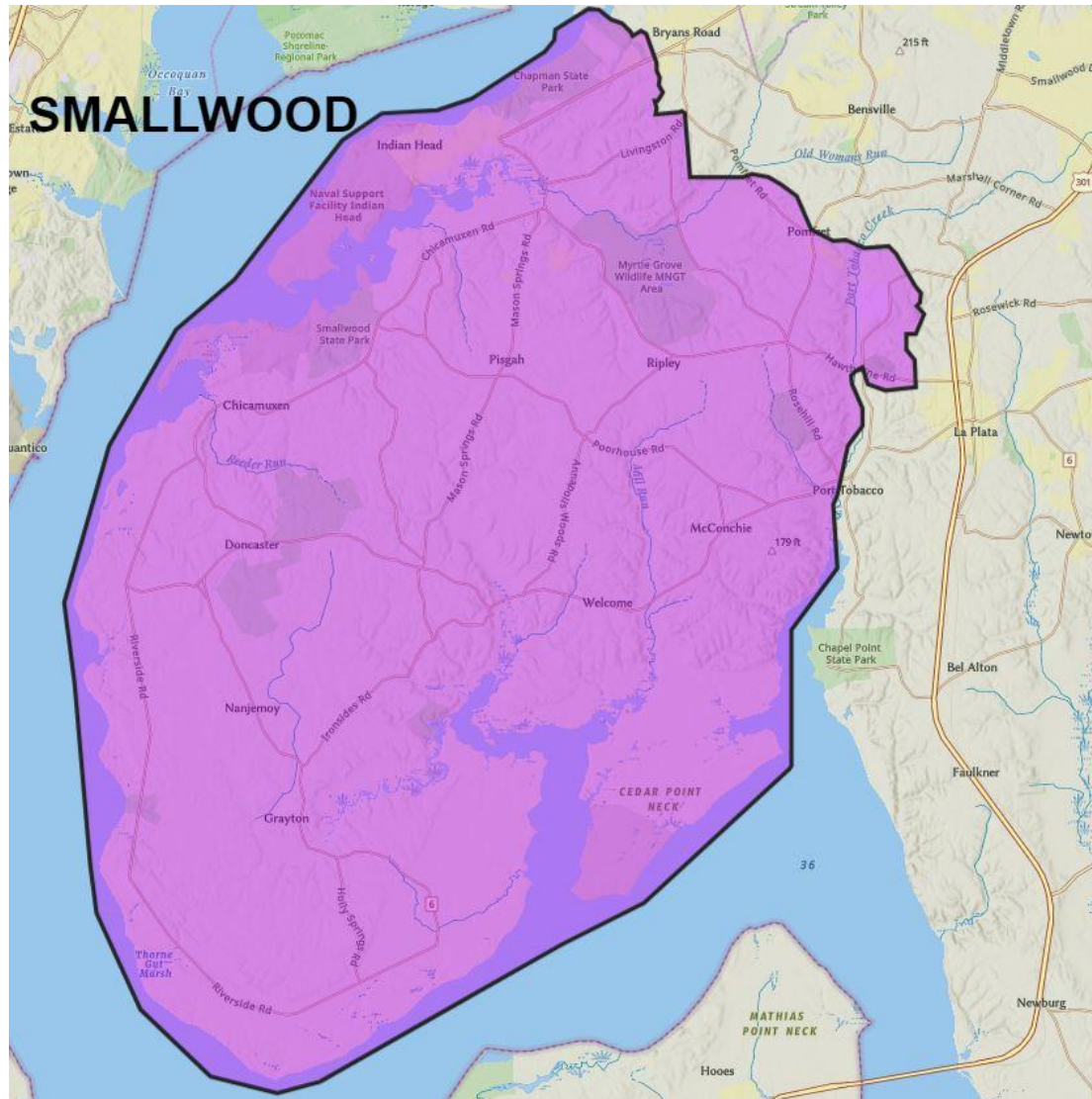
New Smallwood Zone with Enrollment Blocks

Alternative A



New Smallwood Zone

Alternative A



Somers Zone – Changes

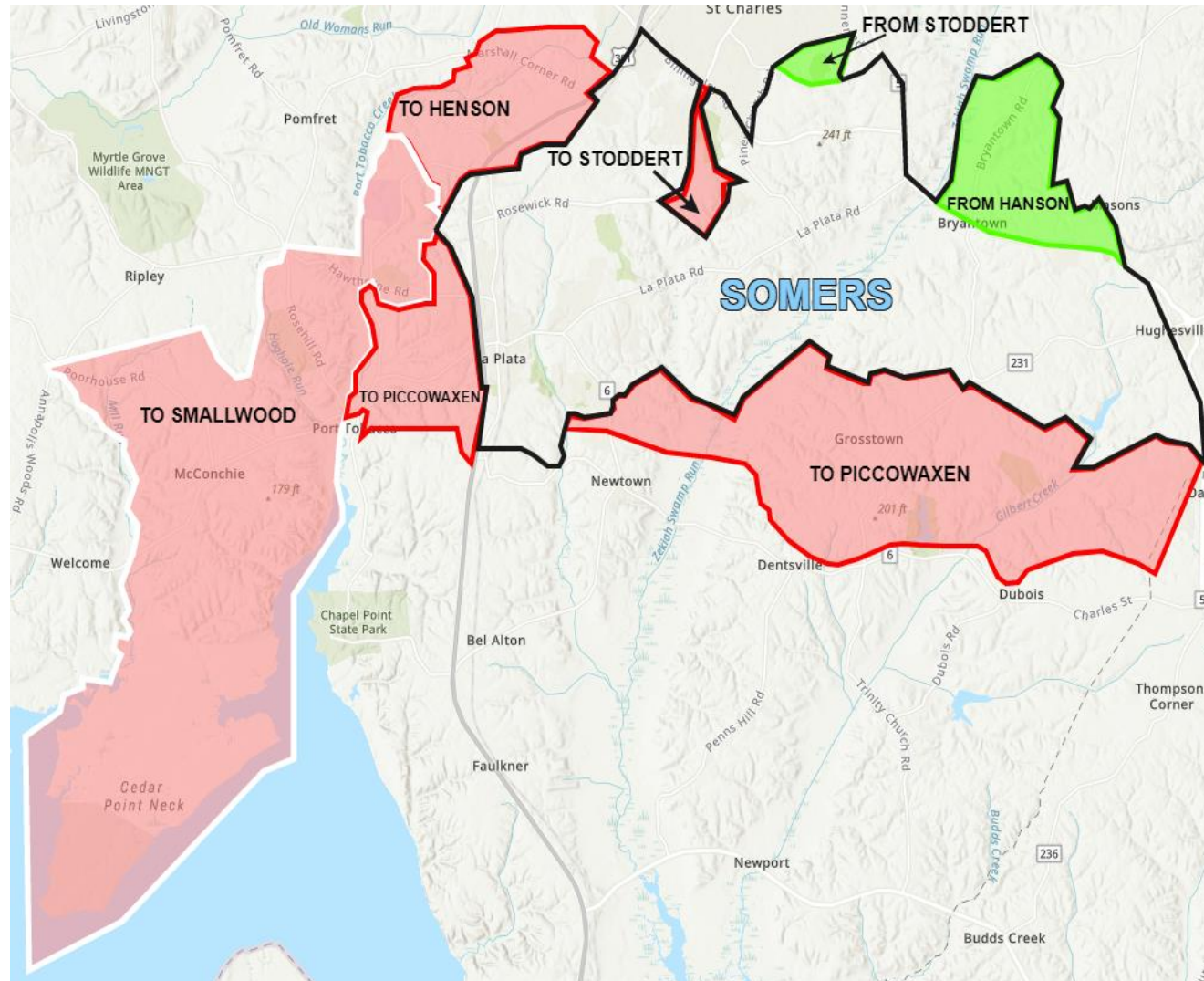
Alternative A

State Rated Capacity
(SRC):

795

Official Enrollment
(9/30/19):

1086



SY2022-23:

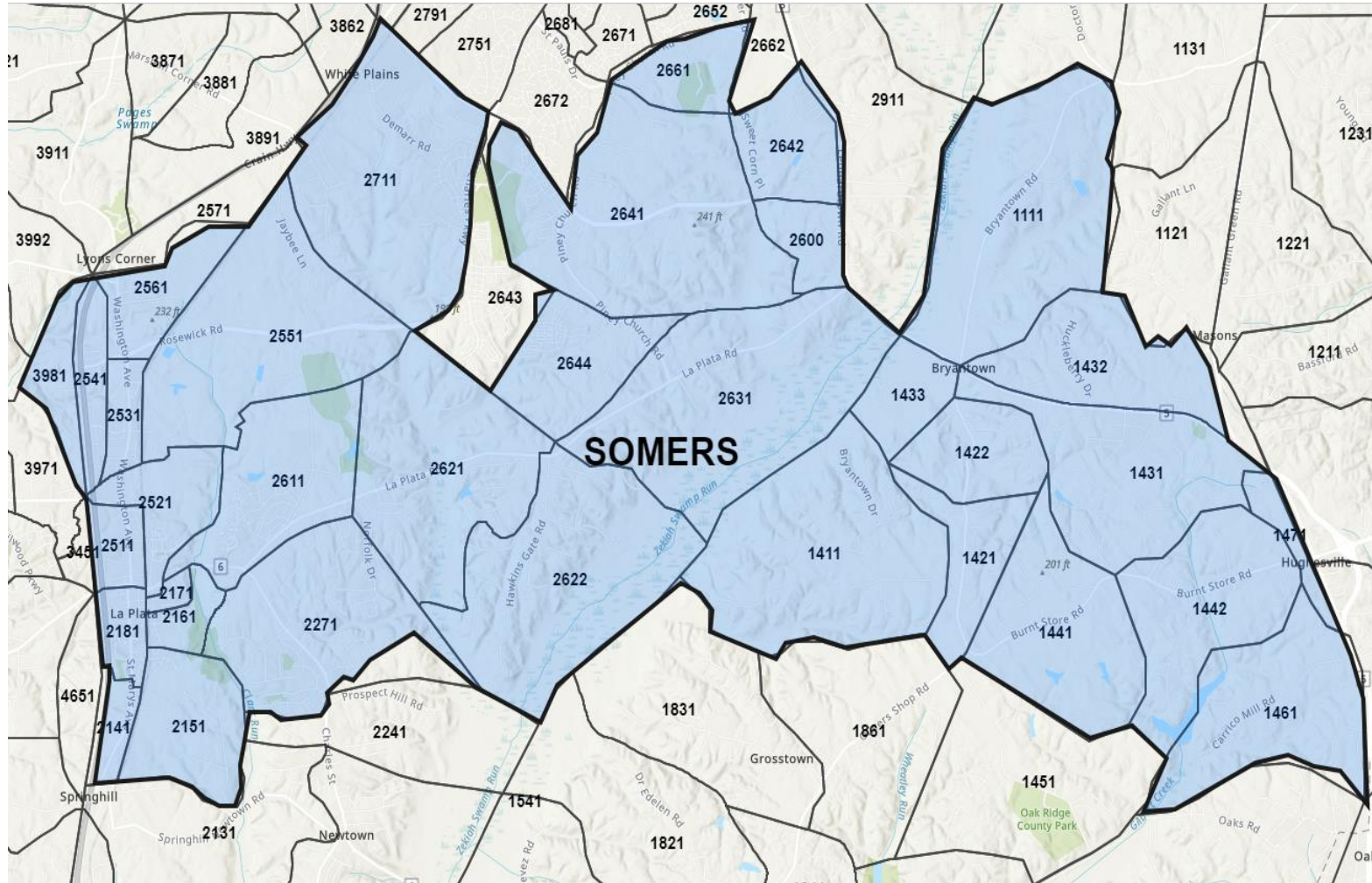
668

SY2025-26:

843

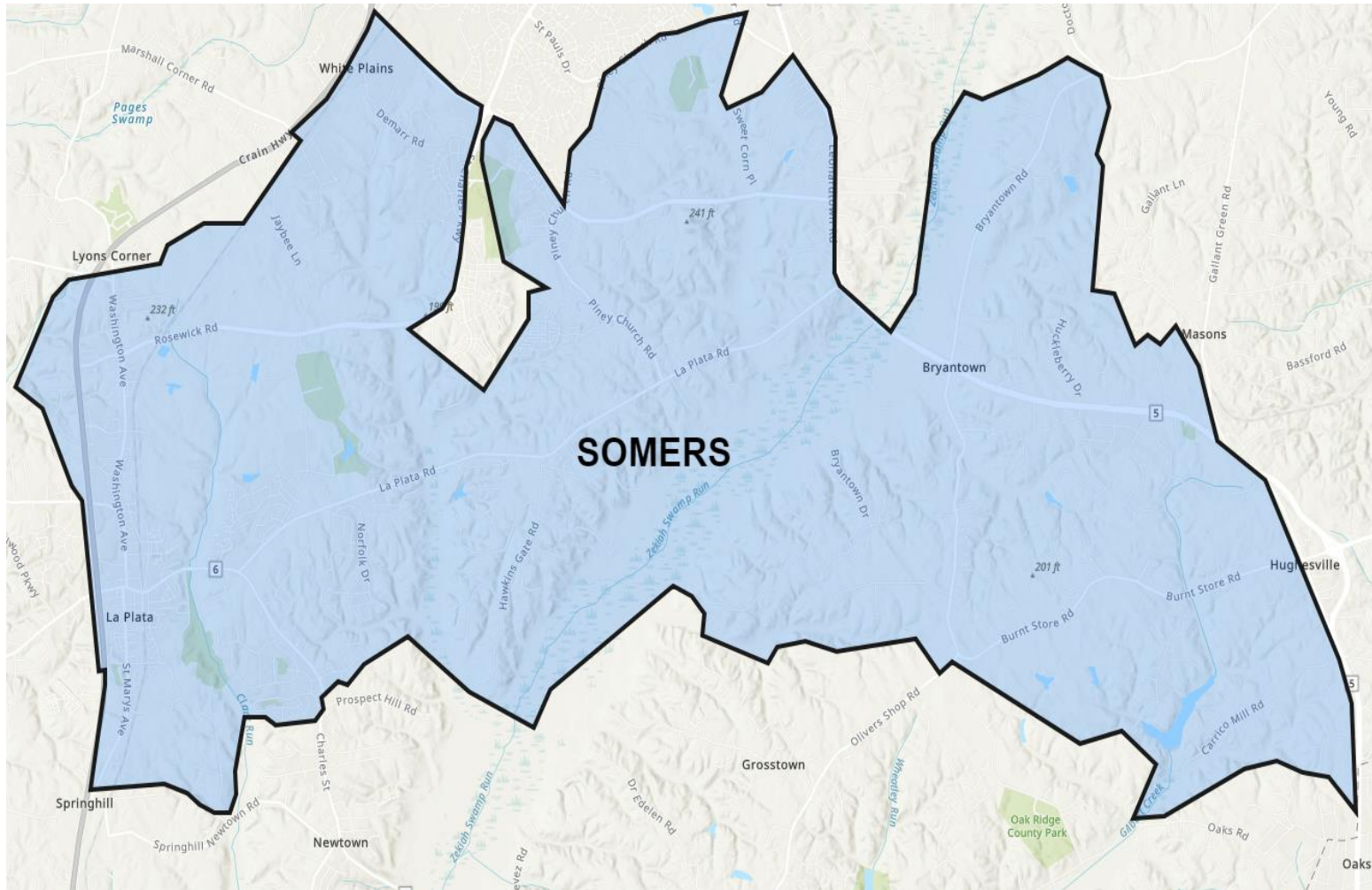
New Somers Zone with Enrollment Blocks

Alternative A



New Somers Zone

Alternative A



Stoddert Zone – Changes Alternative A

State Rated Capacity
(SRC):

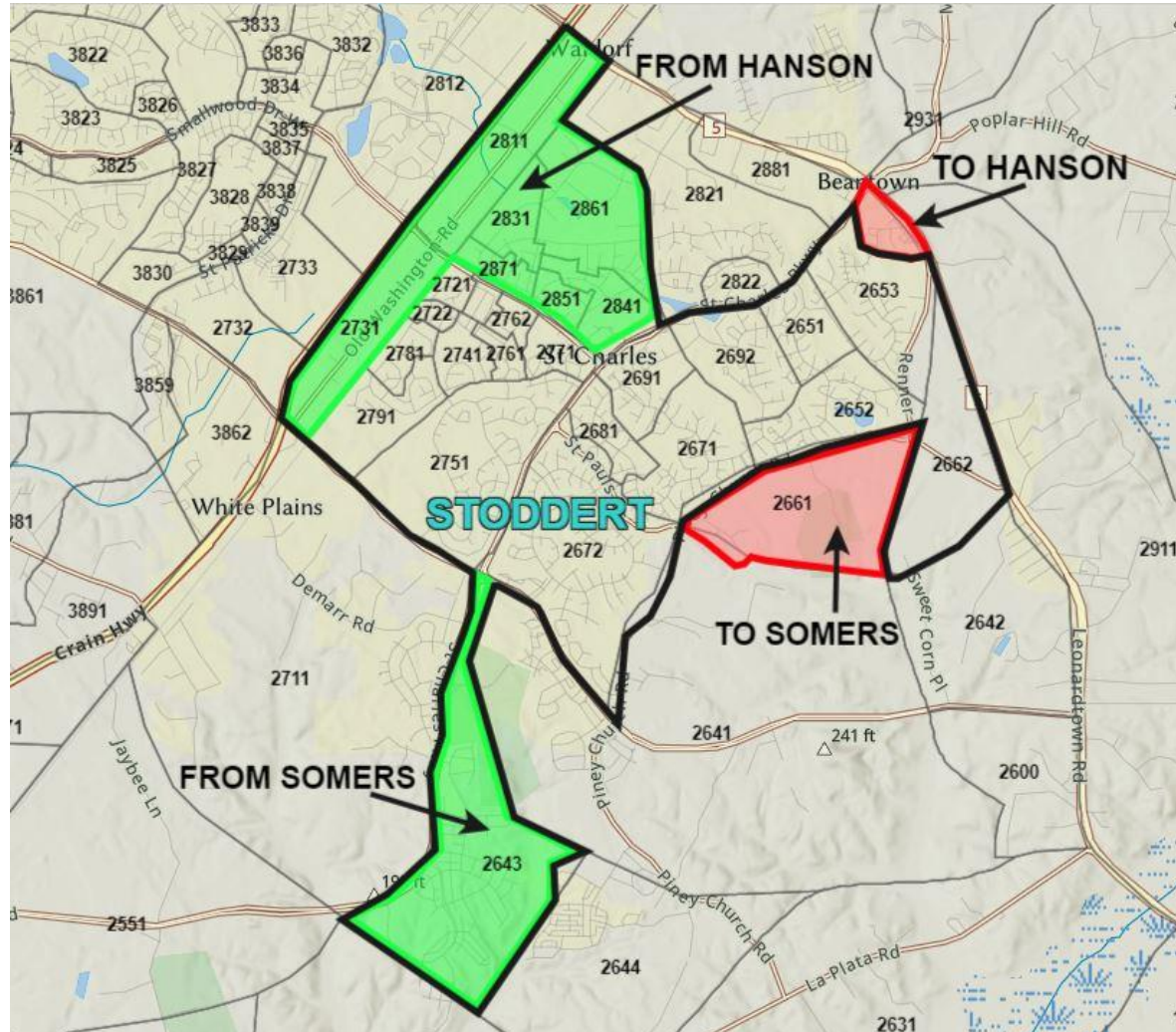
***975**

*Projected State Rated Capacity

Current SRC: **711**

Official Enrollment
(9/30/19):

814



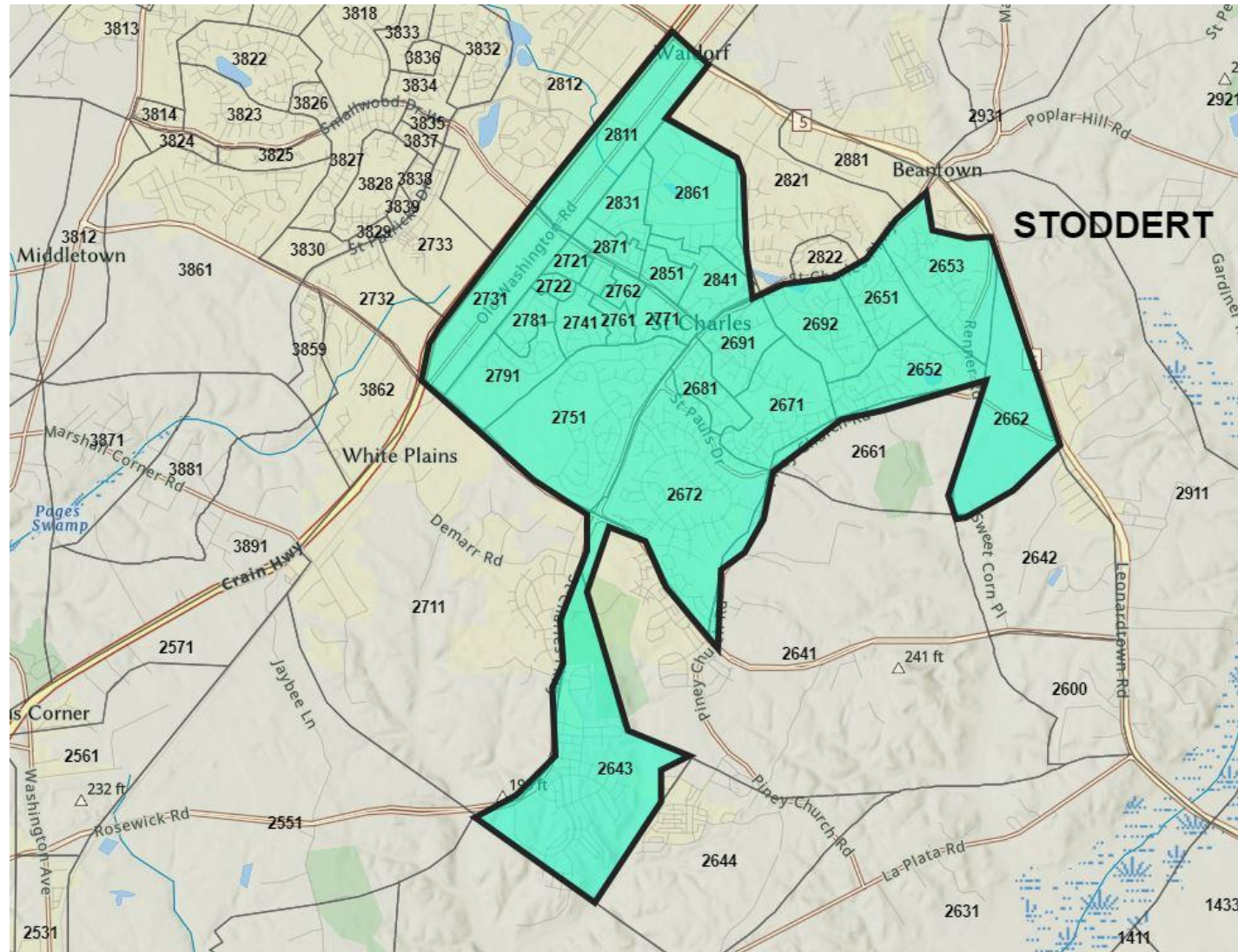
SY2022-23:

986

SY2025-26:

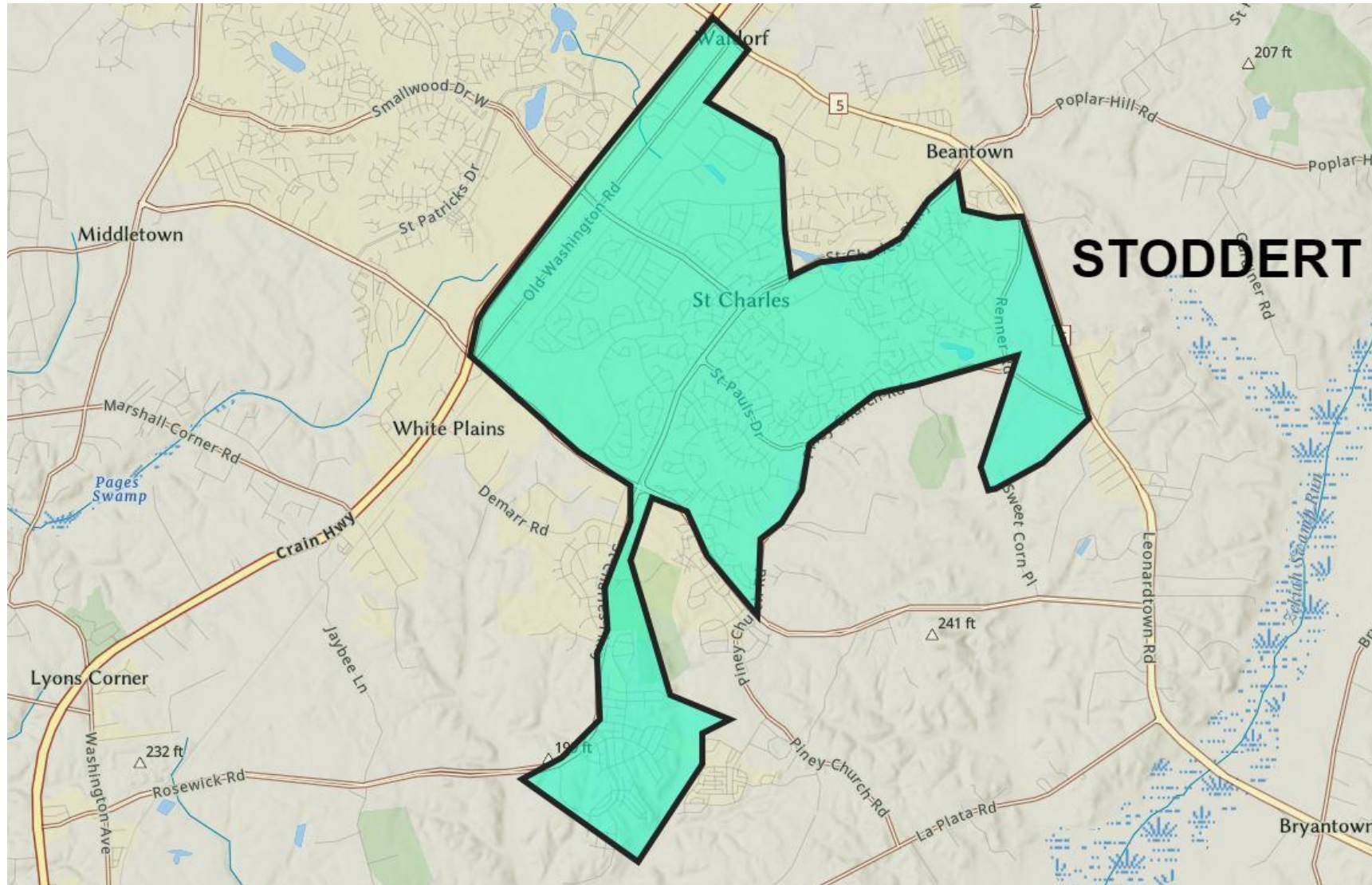
1019

New Stoddert Zone with Enrollment Blocks
Alternative A



New Stoddert Zone

Alternative A



Enrollment, SRC, and Growth - Alternative A

Middle School	State Rated Capacity (SRC)	Official Enrollment 9/30/2019	SY2022-23	SY2025-26
Theodore G. Davis	997	885	934	950
John Hanson	797	893	805	833
Matthew Henson	668	811	654	666
Mattawoman	912	1026	915	943
Piccowaxen	563	450	569	587
General Smallwood	604	527	555	561
Milton Somers	795	1086	668	843
Benjamin Stoddert	*975	814	986	1019
*Projected State Rated Capacity				



Resources

Find information on redistricting.

www.ccboe.com/index.php/redistricting-middle-school-ql

Explore the interactive map.

Alternative A:

<https://tinyurl.com/AlternativeAccps>

Email comments.

redistrict@ccboe.com



What's Next?

November 2021

Superintendent's modified version of Plan A is presented. The Board is expected to take action.

August 2022

Redistricting decision takes effect at the start of the 2022-2023 school year.

*** Staff reviews student enrollment data annually. The superintendent can issue a moratorium to send students in a growth area for a school exceeding their State Rated Capacity (SRC) to a neighboring school that is under their SRC.**

Questions