



ORANGE UNIFIED SCHOOL DISTRICT

Measure S Bond Program

October 2021 Monthly Progress Report



PERIOD COVERED:
October 1-31, 2021

FISCAL YEAR
FY 2021-2022

PROGRESS REPORT NO.
PR-052-2021-052

PREPARED BY:

CUMMING
Building Value Through Expertise



TABLE OF CONTENTS

1.0 Executive Summary

- 1.1 Program Summary
- 1.2 Program Highlights/Key Milestones
- 1.3 Look Ahead (next 90 days)

2.0 Project Status Report

- Canyon HS – Science Center
- El Modena HS – Science Center
- Orange HS – Utility Infrastructure (Increment # 1)
- Orange HS – Science Center (Increment # 2)
- Villa Park HS – Interim Housing & Science Center

3.0 Financial Report

- 3.1 Project Cost Estimate
 - Budget vs Actuals with Vendor details per High School
- 3.2 Cash Flow Projections

4.0 Program Schedule Summary

- 4.1 Phase I Schedule Summary
- 4.2 Phase II Schedule Summary



1.0 EXECUTIVE SUMMARY

1.1 Program Summary

Division of State Architects (DSA) approval to establish Phase 1 design criteria completed as follows:

- (Completed) September 22, 2020 - El Modena HS Phase 1 Quad (04-119124)
- (Completed) October 24, 2019 - Villa Park HS New Parking and Drop Off (04-118521).
- (Completed) June 25, 2019 - Orange HS Custom Tensile Fabric Shade Structures (04-118351)
- (Completed) May 2, 2019 - Canyon HS Interim Modular Kitchen (04-118418)
- (Completed) January 31, 2019 - Canyon HS Science Center (04-117300)
- (Completed) November 6, 2018 - El Modena HS Science Center (04-117098)
- (Completed) August 16, 2018 - Villa Park HS Science Center (04-117022)
- (Completed) July 12, 2018 - Orange HS Science Center (Increment # 2) (04-116859)
- (Completed) April 10, 2018 - Orange HS Increment # 1 (Satellite Kitchen) (04-116673.2)
- (Completed) March 1, 2018 - Orange HS Increment #1 (Infrastructure Upgrades, Move Relocatable Buildings, Bus Drop-Off, Restroom Renovation Project) (04-116673.1)
- (Completed) February 7, 2018 - Villa Park HS Interim Housing (DSA Application #04-116788)

Phase 1 construction started / completed, as follows:

- (Construction Start - June 15, 2018 – Orange HS Site Infrastructure (Increment #1)
 - Completed September 4, 2019 – Orange HS Site Infrastructure (Increment #1) (04-116673.1)
- (Construction Start) January 7, 2019 – Villa Park HS (Interim Housing and Science Center)
 - Completed April 26, 2019 – Install ten (10) Portable Modular Buildings (04-116788)
 - Completed October 9, 2020 – Parking Lot Drop-Off (04-118521)
- (Construction Start) February 18, 2019 – Orange HS Science Center (Increment #2)
 - Completed April 8, 2020 – Custom Tensile Fabric Shade Structure (04-118351)
 - Completed August 11, 2021 – Orange HS Science Center (04-116859)
- (Construction Start) April 2, 2019 – El Modena HS Science Center
- (Construction Start) June 12, 2019 – Canyon HS Interim Housing & Science Center
 - Completed August 7, 2020 – Interim Modular Kitchen (04-118418)

Division of State Architects (DSA) approval to establish Phase 2 design criteria as follows:

- (Completed) September 10, 2021 – Villa Park HS Phase 2 (04-119694)
 - Submitted on March 3, 2021
- (Submitted) April 23, 2021 – El Modena HS Phase 2 (04-120032)
- (Submitted) May 26, 2021 – Orange HS Phase 2 (04-120151)
- (Submitted) August 17, 2021 – Canyon HS Phase 2 (04-120410)



1.2 Program Highlights/Key Milestones

California Environmental Quality Act (CEQA) Compliance Achieved on Phase 1 (as required by law):

- Villa Park HS Science Center – Notice of Exemption (Board approved on 9/20/18).
- Canyon HS Science Center – Notice of Exemption (Board approved on 7/26/18).
- Orange HS Science Center – Notice of Exemption (Board approved on 3/8/18).
- El Modena HS Science Center – Notice of Exemption (Board approved on 3/8/18).

California Environmental Quality Act (CEQA) Compliance PENDING on Phase 2 (as required by law):

- Canyon HS Phase 2 – [Pending CEQA review](#)
- El Modena HS Phase 2 – [Pending CEQA review](#)
- Orange HS Phase 2 – [Pending CEQA review](#)
- Villa Park HS Phase 2 – [Pending CEQA review](#)

Phase 2 Measure S Bond Project Development Update:

- As of 10/31/21, New Dimension started construction for the Swing space retrofit of Building 300 at Orange HS to prepare for the Phase 2 project.
- As of 10/31/21, Environmental Audit has started the CEQA process for Villa Park HS, which is the first with DSA completed design.
- As of 10/31/21, at Canyon HS – Phase 2 (04-120410), accepted for DSA Plan Review on August 17, 2021. DSA back check review continues.
- As of 10/31/21, at Villa Park HS - Phase 2 (04-119694), DSA approved design, moving forward into specification review for bid preparation.
- As of 10/31/21, at El Modena HS - Phase 2 (04-120032), accepted for DSA Plan Review on April 23, 2021. DSA back check review continues.
- As of 10/31/21, at Orange HS - Phase 2 (04-120151), submitted for DSA Plan Review on May 26, 2021. DSA back check review continues.

Program Wide Cash Flow Projection / Bond Issuance

- On 10/19/21, an updated cash flow assessment was produced, which projects the current spend threshold for Phase 1 being achieved in February 2021. The Phase II project schedules are based on this projection for Series B Bond sale and use of funds prior to construction activity.
- Data analysis on slow spending in the Phase I program based on construction delays and current market conditions due to the COVID-19 pandemic, affects the selling of Series B Construction Bonds after February 2022. Final assessment by the CBO.



Project Achievements:

- On 10/21/21, Board approved Change Order # 7 for Angeles at El Modena HS in the amount of; Change Order No. 7: \$184,104.01 – 0 Calendar Days Additional Contract Time. This reflects 2.37 %
- On 10/21/21, Board approved the Beltmann Relocation Group in the amount of \$6,238.00, for upcoming ADMIN move, and the amount of \$9,298.00, for upcoming CLASSROOM move, at Canyon HS Science Center, along with a 10% contingency add of \$1,554.00, which bring this to a grand total of: \$17,090.00.
- On 10/21/21, Board approved Change Order # 16 for Swinerton at Canyon HS in the amount of; Change Order No. 16: \$192,252.99 – 0 Calendar Days Additional Contract Time. This reflects 6.32 %
- As of 10/31/21, processing payment application # 29 (September), for ACI (EMHS) reflecting 85% paid overall completion, reflecting 442 calendar days elapsed.
- As of 10/31/21, processing payment application # 31 (September), for ACI (VPHS) reflecting 83% paid overall completion, reflecting 573 calendar days elapsed.
- As of 10/31/21, processing payment application # 28 (September) for Swinerton (CHS) reflecting 81% paid overall completion, reflecting 906 calendar days elapsed.

1.3 Look Ahead (next 90 days)

Board of Education Agenda

November 18th

1. Recommend Board approval of Change Order # 7 for Angeles at Villa Park HS in the amount of; Change Order No. 7: \$32,124.69 – 0 Calendar Days Additional Contract Time; Description: General Contractor costs based on Eight (08) PCO's: One (1) Unforeseen Conditions, Three (3) Owner Requested and Four (4) Design Related changes.
2. Recommend Board approval of Change Order # 8 for Angeles at El Modena HS in the amount of; Change Order No. 8: \$336,978.12 – 0 Calendar Days Additional Contract Time; Description: General Contractor costs based on Twenty-One (21) PCO's: Fourteen (14) Unforeseen Conditions, None (0) Owner Requested and Seven (7) Design Related changes.
3. Recommend Board approval of Change Order # 17 for Swinerton at Canyon HS in the amount of; Change Order No. 17: \$21,660.94 – 0 Calendar Days Additional Contract Time; Description: General Contractor costs based on Seven (7) PCO's: Three (3) Unforeseen Conditions, None (0) Owner Requested and Four (4) Design Related changes.



Program Wide

- Orange HS Science Center – completing items on the Warranty list needing attention.
- Orange HS Science Center – Move Manager to continue with the planning and furniture needs of the swing space required for the new administration building. Assist with any removal of surplus items and/or hazardous material items from the classrooms and campus, required for the new administration building.
- Orange HS Phase II – Lionakis (Architect of Record) responding to any DSA comments during plan review.
- El Modena HS Science Center – Angeles Contractor (ACI) is completing interior plaster walls, take down interior scaffolding in corridor, curtain wall window systems (South wall); HVAC pre-testing with commissioning; and start elevator install and prep for inspection, all interior completion work being done.
- El Modena HS Science Center – The milestone substantial completion (SC) date slipped to January 16, 2022, and the contract completion date of February 16, 2022, based on ACI schedule. We continue to speak with ACI executives about the manpower adjustment needed to make sure we make the January 16th timeframe
- El Modena HS Phase II – HED (Architect of Record) responding to any DSA comments during plan review.
- El Modena HS Phase II – Move Manager provided additional moving boxes and supplies to the teachers relocating and continue the preparation for the relocation. Work with the furniture vendor on the timing of the occupancy of the building and plan logistics of the new furniture and assist in the logistics of storing the furniture product in storage. Assist the project manager in the delivery/installation of the owner-furnished contractor to install (OFCI) equipment. Complete the removal of the surplus and hazardous material items from the classrooms that are relocation.
- Villa Park HS Interim Housing & Science Center – Angeles Contractor ACI completing, interior utility line runs, interior framing, HVAC ductwork runs, drop ceiling, insulation, exterior masonry wall, window and frame installs, interior drywall with mud and taping, North windows on 2nd floor installs focusing on the building being weather-tight, curtain wall completions in entrance, east and west, as well as exterior paving and landscape work.
- Villa Park HS Interim Housing & Science Center – Completing final punch list items and asphalt issues to complete the Parking and Drop Off zone (04-118521) work. ACI to complete Path-of-Travel (POT) construction, so that all PL items can be completed and DSA final documents updated.



- Villa Park HS Science Center – CM review of the general contractor’s August schedule update, reflecting an un-approved substantial completion date of December 16, 2021, which stayed consistent from last month’s schedule. We continue to speak with ACI executives about the manpower adjustment needed to make sure we make the December 16th timeframe
- Villa Park HS Phase II – LPA (Architect of Record) reviewing the approved DSA design and specifications to prepare for bid. Addition of the boiler plate (Division 00 and 01) documents to the bid package. Reviewing the Value Engineering options and pre-qualification needs.
- Villa Park HS Phase II – Move Manager continues preparation for relocations (teacher meetings, rooms/items relocating review, moving supplies orders/delivery, hazmat, and surplus items removal), new furniture delivery, and assistance in OFCI delivery.
- Canyon HS Science Center – Swinerton completing, internal utility and wire runs, 2nd floor run penetrations, sidewalk pours, site excavation, roofing deck and penetrations, grading, parking lot paving, interior finish work including doors, restrooms, classrooms, as well as exterior fencing and paving, completing the MPR exterior finishes on store front, sidewalks and landscape for early turn-over to the District.
- Canyon HS Phase II – Cannon Design (Architect of Record) responding to any DSA comments during plan review.
- Canyon HS Phase II – Prepare to review the Phase II 100% construction cost estimates from the Construction Manager for adherence to budget. Revise the design to conform to budget, if necessary.
- Canyon HS Phase II – Move Manager continues with site visit and review of classrooms relocating into the new Science Building for preparation and planning. Continue the Furniture and Equipment selection and obtain proposals for the Phase 1 project.



2.0 PROJECT STATUS REPORT



Canyon High School
New STEM Building

CANYON HIGH SCHOOL
New STEM Building



EL MODENA SCIENCE CENTER
03.18.2017

Overall View

HED



Orange High School Science Center



ST VILLA PARK HIGH SCHOOL

LPA



CANYON HIGH SCHOOL

CANYON HS SCIENCE CENTER

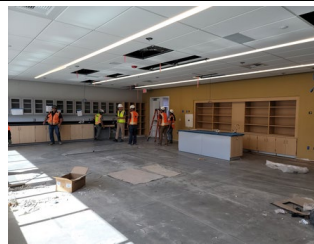
- ✓ 12 Laboratory Rooms
- ✓ 12 General Classrooms
- ✓ Student Services
- ✓ New Food Services

- ✓ New Multi-Purpose Room Entry
- ✓ Parking Lot Improvements
- ✓ Infrastructure Upgrade and Improvements
- ✓ Landscape Improvements

Project Update (Construction):

- As of 10/31/21, Swinerton completing, internal utility and wire runs, 2nd floor run penetrations, sidewalk pours, site excavation, roofing deck and penetrations, grading, parking lot paving, interior finish work including doors, restrooms, classrooms, as well as exterior fencing and paving, completing the MPR exterior finishes on store front, sidewalks and landscape for early turn-over to the District.
- On 10/21/2021, Board approved Change Order # 16 for Swinerton at Canyon HS in the amount of; Change Order No. 16: \$192,252.99 – 0 Calendar Days Additional Contract Time.
- As of 10/31/21, preparing for Partial Acceptance of Landscape Area 1 (adjacent to the new Admin wing), punch list was established, Swinerton working on completion before 90-day warranty period starts.
- As of 10/31/21, Move Manager met with teachers and Office manager to discuss the administrative staff relocation plan and the review of the occupancy list. Review specific request by administrative staff. Pursue approval for additional furniture products requested. Assist the project manager in the delivery of the owner-furnished contractor to install (OFCl) equipment.
- As of 10/30/21, processing payment application # 28 (September) reflecting 81% paid overall completion, reflecting 906 calendar days elapsed.

See Construction Photo's below:



Left to right: exterior aerial shot of the STEM center building, interior finished of the science classroom, exterior courtyard building entrance with concrete and paver preparation, interior hallway with cement board in place prepping the wall finish, chemistry classroom countertops and cabinet finish, restroom tile and fixtures finishes.



EL MODENA HS SCIENCE CENTER

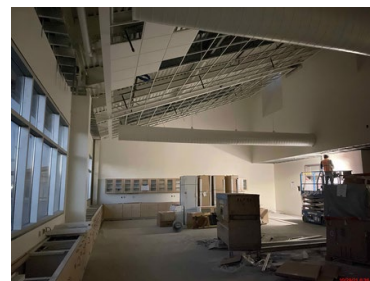
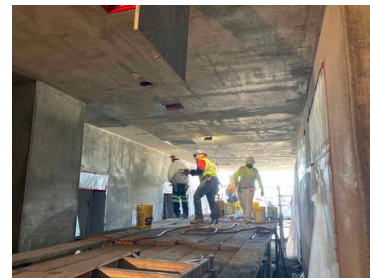
- ✓ 12 Laboratory Rooms
- ✓ 1 General Classrooms
- ✓ 2 Medically Fragile Classrooms

- ✓ Relocation of Campus MDF
- ✓ Technology & Utility Upgrade
- ✓ Landscape Improvements

Project Update (**Construction**):

- As of 10/31/21, Angeles is completing interior plaster walls, take down interior scaffolding in corridor, curtain wall window systems (South wall); HVAC pre-testing with commissioning; and start elevator install and prep for inspection, all interior completion work being done.
- On 10/06/2021, Thomas Hughes (Cumming PM) started taking over the Construction Management responsibilities for this project until completion.
- On 10/21/2021, Board approved Change Order # 7 for Angeles at El Modena HS in the amount of; Change Order No. 7: \$184,104.01 – 0 Calendar Days Additional Contract Time.
- On 10/31/21, The ACI submitted September schedule was received, the un-approved milestone substantial completion date still reflects January 16, 2022, and the contract completion date of February 16, 2022. ACI has made strides in manpower adjustment needed to pull the schedule back to a December SC timeframe.
- As of 10/31/21, Continued to provide moving boxes and supplies to teacher classrooms that will be relocating to the new building. Move Manager met new teachers occupying classrooms relocating and discussed the occupancy plan and next steps. Continue to remove hazmat and surplus items from classrooms relocating in preparation of the relocation.
- As of 10/31/21, processing payment application # 29 (September) reflecting **85%** paid overall completion, reflecting **442 calendar days** elapsed.

See Construction Photo's below:



Left to right: Exterior fascia windows and fascia board finishes (north), science room ceiling cabinets teacher station and floor finishes, interior plaster hallways being finalized, chemistry classroom cabinets countertops and ceiling finishes, interior mechanical room water heaters in place.



ORANGE HS SCIENCE CENTER

- ✓ 12 Laboratory Rooms
- ✓ 1 General Classrooms

- ✓ New Panther Pavilion Plaza
- ✓ 2 Medically Fragile Classrooms

Project Update Increment # 2 – Science Center (**Completion**):

- As of 10/31/21, Pinner completing all warranty work on the interior and exterior of the STEM building, establish the warranty exceptions list with cost.
- On 10/22/21, there has been a Partial Release of Stop Payment Notice letter executed by District and sent to Pinner, still withholding retention funds required in the amount of \$32,206.04.
- As of 10/31/21, there was not payment activity this month.

[See Completion Photo's below:](#)



Orange HS – Science Center STEM Building
(Dusk with lights)





VILLA PARK HIGH SCHOOL

SCHOOL OF EXCELLENCE

VILLA PARK HS SCIENCE CENTER

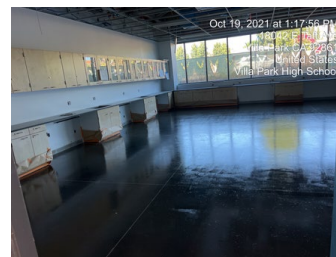
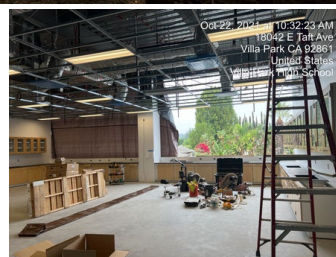
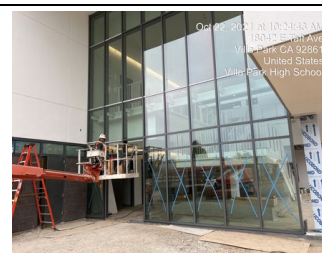
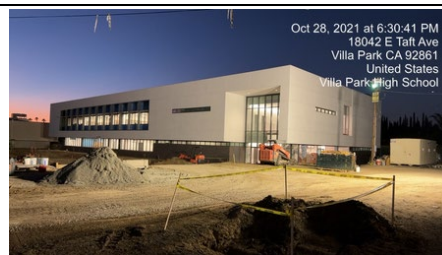
- ✓ 12 Laboratory Rooms
- ✓ 2 General Classrooms
- ✓ 2 Medically Fragile Classrooms

- ✓ Demolish existing building 300
- ✓ Install 10 New Portable Buildings

Project Update ([Construction](#)):

- As of 10/31/21, Angeles completing, interior utility line runs, interior framing, HVAC ductwork runs, drop ceiling, insulation, exterior masonry wall, window and frame installs, interior drywall with mud and taping, North windows on 2nd floor installs focusing on the building being weather-tight, curtain wall completions in entrance, east and west, as well as exterior paving and landscape work.
- As of 10/31/21, CM review of the general contractor's September schedule update, reflecting an un-approved substantial completion date of December 16, 2021, which stayed consistent from last month's schedule.
- As of 10/31/21, DSA is holding the review of final costs, including the balance of outstanding change orders, until the last change order work for close out on the Parking Drop-Off project (04-118521).
- As of 10/31/21, Continued to provide moving boxes and supplies to teacher classrooms that will be relocating to the new building. Move Manager met with new teachers occupying classrooms relocating and discuss the occupancy plan and next steps. Continue to remove the surplus items and provide assistance to teachers in preparation for the relocation.
- As of 10/31/21, processing payment application # 31 (September) reflecting **83%** paid overall completion, reflecting **573 calendar days** elapsed.

[See Construction Photo's below:](#)



Left to right: Exterior facia and windows in place (South), Storefront entrance window system in place, interior hallway (2nd flr) ceiling, floor and wall finishes placing low voltage fixtures, science classroom cabinet, floor, countertop, and ceiling finishes (2nd flr)



3.0 FINANCIAL REPORT

Measure S Bond Program Financial Report for October 2021

3.1 Project Cost Estimate

QSS Data thru 10/31/2021

	Budget	Contracted to Date	Expended to Date	Quarterly Expense Oct '21 - Dec '21	% Expended
PROGRAM					
Phase 1 - HS Science Center	\$204,591,276	\$163,261,658	\$142,502,897	\$6,810,925	69.65%
Phase 2	\$90,699,203	\$10,082,828	\$5,830,504	\$205,982	6.43%
TOTAL	\$295,290,479	\$173,344,486	\$148,333,401	\$7,016,907	50.23%
Canyon High School					
Phase 1 - HS Science Center	\$68,525,233	\$51,567,565	\$42,191,986	\$2,946,835	61.57%
Phase 2	\$5,916,552	\$1,482,491	\$770,831	\$41,753	13.03%
TOTAL	\$74,441,785	\$53,050,056	\$42,962,816	\$2,988,588	57.71%
El Modena High School					
Phase 1 - HS Science Center	\$40,410,581	\$35,595,511	\$30,540,325	\$2,929,476	75.58%
Phase 2	\$33,170,615	\$3,063,284	\$1,870,932	\$52,654	5.64%
TOTAL	\$73,581,196	\$38,658,795	\$32,411,257	\$2,982,129	44.05%
Orange High School					
Phase 1 - HS Science Center	\$51,354,718	\$42,367,577	\$42,082,405	\$11,350	81.94%
Phase 2	\$22,195,135	\$2,539,769	\$1,441,404	\$51,779	6.49%
TOTAL	\$73,549,853	\$44,907,346	\$43,523,809	\$63,129	59.18%
Villa Park High School					
Phase 1 - HS Science Center	\$44,300,744	\$33,731,004	\$27,688,181	\$923,263	62.50%
Phase 2	\$29,416,902	\$2,997,285	\$1,747,338	\$59,797	5.94%
TOTAL	\$73,717,646	\$36,728,289	\$29,435,519	\$983,060	39.93%

Added Interest Earned FY2019/2020

	Budget	Expended
Canyon High School	\$1,101,651	\$32,883
El Modena High School	\$634,101	\$18,817
Orange High School	\$587,274	\$17,282
Villa Park High School	\$549,500	\$16,351
TOTAL	\$2,872,526	\$85,333

Added Interest Earned FY2020/2021

	Budget	Expended
Canyon High School	\$373,853	\$26,225
El Modena High School	\$174,098	\$11,963
Orange High School	\$96,615	\$6,482
Villa Park High School	\$169,484	\$11,711
TOTAL	\$814,049	\$56,381

Transferred Funds

	Budget
Canyon High School (From)	-\$300,000
Villa Park High School (To)	\$300,000



Measure S Bond Program

Financial Report for October 2021

Budget vs Actuals - By School and Budget Category with Vendor Detail

QSS Data thru 10/31/2021

	Budget	Contracted to Date	Expended to Date	Quarterly Expense Oct '21 - Dec '21	% Expended
Canyon High School					
390-9520 Canyon HS Science Center (DSA 04-117300)					
1. Design Cost					
1.01 Architect					
UNCOMMITTED	\$13,600	\$0	\$0	\$0	
GKKWORKS CANNON DESIGN	\$3,122,050	\$3,122,050	\$3,023,647	\$0	96.85%
LIONAKIS	\$14,058	\$14,058	\$14,058	\$0	100.00%
	\$3,149,708	\$3,136,108	\$3,037,705	\$0	96.44%
2. Construction Cost					
2.01 Construction					
UNCOMMITTED	\$3	\$0	\$0	\$0	
SWINERTON BUILDERS	\$39,506,003	\$39,506,003	\$32,046,198	\$2,751,651	81.12%
	\$39,506,006	\$39,506,003	\$32,046,198	\$2,751,651	81.12%
2.02 OFCI and Other Construction					
UNCOMMITTED	\$335,464	\$0	\$0	\$0	
ACCO ENGINEERED SYSTEMS INC	\$236,785	\$236,785	\$236,785	\$0	100.00%
AMERICAN REPROGRAPHICS CO LLC	\$1,026	\$1,026	\$0	\$0	0.00%
CITY OF ANAHEIM - ELECTRICAL ENGINEERING DIV	\$91,340	\$91,340	\$91,340	\$0	100.00%
DEVELOPMENT GROUP INC	\$90,440	\$90,440	\$51,375	\$0	56.80%
FLINN SCIENTIFIC INC	\$9,067	\$9,067	\$7,858	\$7,858	86.67%
INTER-PACIFIC INC	\$12,869	\$12,869	\$12,869	\$0	100.00%
TURTLE STORAGE dba AMERICAN BICYCLE CO	\$7,597	\$7,597	\$7,597	\$7,597	100.00%
VWR INTERNATIONAL LLC	\$16,691	\$16,691	\$0	\$0	0.00%
WW GRAINGER INC	\$1,039	\$1,039	\$1,039	\$0	100.00%
	\$802,317	\$466,853	\$408,861	\$15,455	50.96%
3. Program and Construction Management					
3.01 Program Management Fees					
UNCOMMITTED	\$838,835	\$0	\$0	\$0	
CUMMING CONSTRUCTION MGMT INC	\$1,362,122	\$2,200,957	\$1,185,934	\$93,071	87.07%
	\$2,200,957	\$2,200,957	\$1,185,934	\$93,071	53.88%
3.02 Construction Management Fees					
UNCOMMITTED	\$22,668	\$0	\$0	\$0	
CORDOBA CORPORATION	\$87,508	\$87,508	\$87,479	\$0	99.97%
GAFCON INC	\$2,770,943	\$2,770,943	\$2,457,112	\$65,900	88.67%
	\$2,881,119	\$2,858,451	\$2,544,590	\$65,900	88.32%
4. Construction Support Costs					
4.01 Rental					



Measure S Bond Program

Financial Report for October 2021

Budget vs Actuals - By School and Budget Category with Vendor Detail

QSS Data thru 10/31/2021

	Budget	Contracted to Date	Expended to Date	Quarterly Expense Oct '21 - Dec '21	% Expended
UNCOMMITTED	\$1	\$0	\$0	\$0	
	\$1	\$0	\$0	\$0	0.00%
4.02 Title, Environmental, Stormwater Management					
UNCOMMITTED	\$56,555	\$0	\$0	\$0	
CHICAGO TITLE COMPANY	\$750	\$750	\$750	\$0	100.00%
CITY OF ANAHEIM	\$2,524	\$2,524	\$2,524	\$0	100.00%
CITY OF ANAHEIM - WATER	\$3,082	\$3,082	\$3,082	\$0	100.00%
COUNTY OF ORANGE - ENVIRONMENTAL HEALTH	\$1,615	\$1,615	\$1,615	\$0	100.00%
ENVIRONMENTAL AUDIT INC	\$50,800	\$50,800	\$21,375	\$0	42.08%
OUSD COST OF INTEREST DISTRIBUTION	\$1	\$1	\$1	\$0	100.00%
	\$115,327	\$58,771	\$29,346	\$0	25.45%
4.03 Commissioning					
UNCOMMITTED	\$23,241	\$0	\$0	\$0	
P2S ENGINEERING INC	\$49,202	\$49,202	\$41,330	\$0	84.00%
	\$72,443	\$49,202	\$41,330	\$0	57.05%
4.04 Builders Risk Insurance					
UNCOMMITTED	\$0	\$0	\$0	\$0	
	\$0	\$0	\$0	\$0	
4.05 DSA Review Fees					
UNCOMMITTED	\$76,626	\$0	\$0	\$0	
DIVISION OF STATE ARCHITECT	\$504,370	\$504,370	\$504,370	\$0	100.00%
	\$580,996	\$504,370	\$504,370	\$0	86.81%
4.06 Postage, Printing & Advertising					
UNCOMMITTED	\$59,535	\$0	\$0	\$0	
AMERICAN REPROGRAPHICS CO LLC	\$13,857	\$13,857	\$10,950	\$0	79.02%
SOUTHERN CALIFORNIA NEWS GROUP	\$2,605	\$2,605	\$2,605	\$0	100.00%
	\$75,997	\$16,462	\$13,555	\$0	17.84%
4.07 DSA Inspection (IOR)					
UNCOMMITTED	\$139,851	\$0	\$0	\$0	
KNOWLAND CONSTRUCTION SERVICES	\$454,016	\$454,016	\$330,968	\$15,488	72.90%
	\$593,867	\$454,016	\$330,968	\$15,488	55.73%
4.08 DSA Construction Phase Testing (LOR)					
UNCOMMITTED	\$90,876	\$0	\$0	\$0	
AMERICAN ENGINEERING LABORATORIES INC	\$556,995	\$556,995	\$462,109	\$5,270	82.96%
	\$647,871	\$556,995	\$462,109	\$5,270	71.33%
4.09 Relocation					
UNCOMMITTED	\$23,100	\$0	\$0	\$0	
ULINE INC	\$1,900	\$1,900	\$0	\$0	0.00%
	\$25,000	\$1,900	\$0	\$0	0.00%
4.10 Labor Compliance					
UNCOMMITTED	\$47,498	\$0	\$0	\$0	



Measure S Bond Program
Financial Report for October 2021
Budget vs Actuals - By School and Budget Category with Vendor Detail

QSS Data thru 10/31/2021

	Budget	Contracted to Date	Expended to Date	Quarterly Expense Oct '21 - Dec '21	% Expended
	\$47,498	\$0	\$0	\$0	0.00%
4.11 Preliminary Testing (Hazmat, Topo, Geo, etc)					
UNCOMMITTED	\$229,637	\$0	\$0	\$0	
C BELOW SUBSURFACE IMAGING (Subsurface Investigation)	\$8,445	\$8,445	\$8,445	\$0	100.00%
CALIFORNIA GEOLOGICAL SURVEY (Geology and Seismology Review)	\$3,600	\$3,600	\$3,600	\$0	100.00%
ENVIRONMENTAL NETWORK CORPORATION	\$20,210	\$20,210	\$20,193	\$0	99.91%
HARRINGTON GEOTECHNICAL ENGINEERING INC (Geotechnical Soils Investigation)	\$13,500	\$13,500	\$13,500	\$0	100.00%
PROVENCER, GEORGE (dba PROVO ENGINEERING)	\$720	\$720	\$720	\$0	100.00%
RMA GROUP (dba SITESCAN)	\$26,103	\$26,103	\$26,103	\$0	100.00%
XICOTENCATL ENRIQUE SALAZAR	\$20,100	\$20,100	\$20,100	\$0	100.00%
	\$322,315	\$92,678	\$92,660	\$0	28.75%
4.12 Utility Connection Fees (Local Permits)					
UNCOMMITTED	\$173,033	\$0	\$0	\$0	
AT&T	\$5,302	\$5,302	\$5,302	\$0	100.00%
CITY OF ANAHEIM - ELECTRICAL ENGINEERING DIV	\$2,756	\$2,756	\$2,756	\$0	100.00%
CROWN CASTLE INTERNATIONAL	\$6,455	\$6,455	\$6,455	\$0	100.00%
SOUTHERN CALIFORNIA GAS CO	\$2,445	\$2,445	\$2,445	\$0	100.00%
	\$189,991	\$16,958	\$16,958	\$0	8.93%
4.13 FF&E (Laboratory Tables and Chairs, other)					
UNCOMMITTED	\$852,705	\$0	\$0	\$0	
ARROW RESTAURANT EQUIPMENT	\$11,559	\$11,559	\$11,559	\$0	100.00%
CAROLINA BIOLOGICAL SUPPLY	\$18,896	\$18,896	\$1,581	\$0	8.37%
FLINN SCIENTIFIC INC	\$5,427	\$5,427	\$0	\$0	0.00%
VWR INTERNATIONAL LLC	\$9,486	\$9,486	\$9,486	\$0	100.00%
	\$898,073	\$45,368	\$22,627	\$0	2.52%
4.14 Legal Counsel					
UNCOMMITTED	\$94,996	\$0	\$0	\$0	
	\$94,996	\$0	\$0	\$0	0.00%
5. Contingency					
5.01 Construction Contingency					
UNCOMMITTED	\$1,680,437	\$0	\$0	\$0	
	\$1,680,437	\$0	\$0	\$0	0.00%
5.02 Project Contingency					
UNCOMMITTED	\$12,334,331	\$0	\$0	\$0	
	\$12,334,331	\$0	\$0	\$0	0.00%
Total 390-9520 Canyon HS Science Center (DSA 04-117300)	\$66,219,249	\$49,965,092	\$40,737,211	\$2,946,835	61.52%
390-9520 Canyon HS Unallocated Funds F21					



Measure S Bond Program

Financial Report for October 2021

Budget vs Actuals - By School and Budget Category with Vendor Detail

QSS Data thru 10/31/2021

	Budget	Contracted to Date	Expended to Date	Quarterly Expense Oct '21 - Dec '21	% Expended
4. Construction Support Costs					
4.15 Miscellaneous Fees					
UNCOMMITTED	\$0	\$0	\$0	\$0	
OUSD COST OF INTEREST DISTRIBUTION	\$96,044	\$96,044	\$96,044	\$0	100.00%
	\$96,044	\$96,044	\$96,044	\$0	100.00%
5. Program Reserve					
5.03 Interest Earned - Reserve					
UNCOMMITTED	\$2,345,740	\$0	\$0	\$0	
	\$2,345,740	\$0	\$0	\$0	0.00%
Total 390-9520 Canyon HS Unallocated Funds F21	\$2,441,785	\$96,044	\$96,044	\$0	3.93%
390-0000 Canyon HS IP Surveillance Camera and Systems					
4. Construction Support Costs					
4.13 FF&E (Laboratory Tables and Chairs, other)					
UNCOMMITTED	\$0	\$0	\$0	\$0	
CDW GOVERNMENT INC (Parts for IP Camera Systems)	\$29,337	\$29,337	\$29,337	\$0	100.00%
DIGITAL NETWORKS GROUP INC (F/I IP Camera Software)	\$7,093	\$7,093	\$7,093	\$0	100.00%
INTER-PACIFIC INC	\$18,163	\$18,163	\$18,163	\$0	100.00%
	\$54,593	\$54,593	\$54,593	\$0	100.00%
Total 390-0000 Canyon HS IP Surveillance Camera and Systems	\$54,593	\$54,593	\$54,593	\$0	100.00%
390-9520 Canyon HS Interim Kitchen (DSA 04-118418)					
1. Design Cost					
1.01 Architect					
UNCOMMITTED	\$0	\$0	\$0	\$0	
GKKWORKS CANNON DESIGN	\$119,620	\$119,620	\$11,475	\$0	9.59%
	\$119,620	\$119,620	\$11,475	\$0	9.59%
2. Construction Cost					
2.01 Construction					
UNCOMMITTED	\$0	\$0	\$0	\$0	
SWINERTON BUILDERS	\$1,053,557	\$1,053,557	\$1,048,571	\$0	99.53%
	\$1,053,557	\$1,053,557	\$1,048,571	\$0	99.53%
2.02 OFCI and Other Construction					
UNCOMMITTED	\$10	\$0	\$0	\$0	
E.R.E.S. ENTERPRISES INC DBA ECONOMY RESTAURANT EQUIP	\$49,721	\$49,721	\$49,721	\$0	100.00%
THE DICKLER CORPORATION DBA CHEFS TOYS	\$109,449	\$109,449	\$109,449	\$0	100.00%
	\$159,180	\$159,170	\$159,170	\$0	99.99%



Measure S Bond Program
Financial Report for October 2021
Budget vs Actuals - By School and Budget Category with Vendor Detail

QSS Data thru 10/31/2021

	Budget	Contracted to Date	Expended to Date	Quarterly Expense Oct '21 - Dec '21	% Expended
4. Construction Support Costs					
4.01 Rental					
UNCOMMITTED	\$0	\$0	\$0	\$0	
ELITE MODULAR LEASING & SALES INC	\$161,864	\$161,864	\$144,929	\$0	89.54%
	\$161,864	\$161,864	\$144,929	\$0	89.54%
4.05 DSA Review Fees					
UNCOMMITTED	\$0	\$0	\$0	\$0	
DIVISION OF STATE ARCHITECT	\$15,812	\$15,812	\$15,812	\$0	100.00%
	\$15,812	\$15,812	\$15,812	\$0	100.00%
4.07 DSA Inspection (IOR)					
UNCOMMITTED	\$0	\$0	\$0	\$0	
KNOWLAND CONSTRUCTION SERVICES	\$71,104	\$71,104	\$61,688	\$0	86.76%
	\$71,104	\$71,104	\$61,688	\$0	86.76%
4.08 DSA Construction Phase Testing (LOR)					
UNCOMMITTED	\$0	\$0	\$0	\$0	
AMERICAN ENGINEERING LABORATORIES INC	\$17,100	\$17,100	\$9,219	\$0	53.91%
	\$17,100	\$17,100	\$9,219	\$0	53.91%
4.11 Preliminary Testing (Hazmat, Topo, Geo, etc)					
UNCOMMITTED	\$0	\$0	\$0	\$0	
ENVIRONMENTAL NETWORK CORPORATION	\$4,245	\$4,245	\$3,910	\$0	92.10%
	\$4,245	\$4,245	\$3,910	\$0	92.10%
Total 390-9520 Canyon HS Interim Kitchen (DSA 04-118418)	\$1,602,483	\$1,602,473	\$1,454,775	\$0	90.78%
390-9520 Canyon HS Phase II (DSA 04-120410)					
1. Design Cost					
1.01 Architect					
UNCOMMITTED	\$0	\$0	\$0	\$0	
GKKWORKS CANNON DESIGN	\$663,500	\$663,500	\$463,725	\$0	69.89%
	\$663,500	\$663,500	\$463,725	\$0	69.89%
1.02 AE Design Contingency					
UNCOMMITTED	\$44,000	\$0	\$0	\$0	
GKKWORKS CANNON DESIGN	\$0	\$44,000	\$0	\$0	
	\$44,000	\$44,000	\$0	\$0	0.00%
3. Program and Construction Management					
3.01 Program Management Fees					
UNCOMMITTED	\$98,152	\$0	\$0	\$0	
CUMMING CONSTRUCTION MGMT INC	\$109,418	\$109,418	\$34,943	\$13,889	31.94%
	\$207,570	\$109,418	\$34,943	\$13,889	16.83%



Measure S Bond Program

Financial Report for October 2021

Budget vs Actuals - By School and Budget Category with Vendor Detail

QSS Data thru 10/31/2021

	Budget	Contracted to Date	Expended to Date	Quarterly Expense Oct '21 - Dec '21	% Expended
3.02 Construction Management Fees					
UNCOMMITTED	\$1,750	\$0	\$0	\$0	
CORDOBA CORPORATION	\$422,127	\$422,127	\$46,041	\$24,039	10.91%
	\$423,877	\$422,127	\$46,041	\$24,039	10.86%
4. Construction Support Costs					
4.03 Commissioning					
UNCOMMITTED	\$0	\$0	\$0	\$0	
P2S ENGINEERING INC	\$4,329	\$4,329	\$1,800	\$0	41.58%
	\$4,329	\$4,329	\$1,800	\$0	41.58%
4.05 DSA Review Fees					
UNCOMMITTED	\$0	\$0	\$0	\$0	
DIVISION OF STATE ARCHITECT	\$57,640	\$57,640	\$57,640	\$0	100.00%
	\$57,640	\$57,640	\$57,640	\$0	100.00%
4.06 Postage, Printing & Advertising					
UNCOMMITTED	\$0	\$0	\$0	\$0	
AMERICAN REPROGRAPHICS CO LLC	\$7,500	\$7,500	\$0	\$0	0.00%
	\$7,500	\$7,500	\$0	\$0	0.00%
4.11 Preliminary Testing (Hazmat, Topo, Geo, etc)					
UNCOMMITTED	\$250,511	\$0	\$0	\$0	
ENVIRONMENTAL NETWORK CORPORATION	\$19,515	\$19,515	\$12,220	\$0	62.62%
XICOTENCATL ENRIQUE SALAZAR	\$3,825	\$3,825	\$3,825	\$3,825	100.00%
	\$273,851	\$23,340	\$16,045	\$3,825	5.86%
Total 390-9520 Canyon HS Phase II (DSA 04-120410)	\$1,682,267	\$1,331,854	\$620,194	\$41,753	36.87%
390-TBD Canyon HS Science Center Unallocated Funds F22					
5. Unallocated Bond Funds					
5.04 Unallocated Bond Funds					
UNCOMMITTED	\$703,502	\$0	\$0	\$0	
	\$703,502	\$0	\$0	\$0	0.00%
Total 390-TBD Canyon HS Science Center Unallocated Funds F22	\$703,502	\$0	\$0	\$0	0.00%
390-TBD Canyon HS Unallocated Funds F22					
5. Unallocated Bond Funds					
5.04 Unallocated Bond Funds					
UNCOMMITTED	\$1,737,907	\$0	\$0	\$0	
	\$1,737,907	\$0	\$0	\$0	0.00%
Total 390-TBD Canyon HS Unallocated Funds F22	\$1,737,907	\$0	\$0	\$0	0.00%



Measure S Bond Program

Financial Report for October 2021

Budget vs Actuals - By School and Budget Category with Vendor Detail

QSS Data thru 10/31/2021

	Budget	Contracted to Date	Expended to Date	Quarterly Expense Oct '21 - Dec '21	% Expended
Canyon High School	\$74,441,785	\$53,050,056	\$42,962,816	\$2,988,588	57.71%
El Modena High School					
391-0000 El Modena HS IP Surveillance Camera and Systems					
4. Construction Support Costs					
4.13 FF&E (Laboratory Tables and Chairs, other)					
UNCOMMITTED	\$0	\$0	\$0	\$0	
CDW GOVERNMENT INC (Parts for IP Camera Systems)	\$39,388	\$39,388	\$39,388	\$0	100.00%
DIGITAL NETWORKS GROUP INC (F/I IP Camera Software)	\$11,719	\$11,719	\$11,719	\$0	100.00%
INTER-PACIFIC INC	\$30,073	\$30,073	\$30,073	\$0	100.00%
	\$81,179	\$81,179	\$81,179	\$0	100.00%
Total 391-0000 El Modena HS IP Surveillance Camera and Systems	\$81,179	\$81,179	\$81,179	\$0	100.00%
391-9520 El Modena HS Science Center (DSA 04-117098)					
1. Design Cost					
1.01 Architect					
UNCOMMITTED	\$0	\$0	\$0	\$0	
HARLEY ELLIS DEVEREAUX	\$2,503,304	\$2,503,304	\$2,295,525	\$369,477	91.70%
LIONAKIS	\$14,059	\$14,059	\$14,059	\$0	100.00%
	\$2,517,363	\$2,517,363	\$2,309,584	\$369,477	91.75%
2. Construction Cost					
2.01 Construction					
UNCOMMITTED	\$2	\$0	\$0	\$0	
ANGELES CONTRACTOR, INC	\$26,138,675	\$26,138,675	\$22,241,599	\$2,357,872	85.09%
	\$26,138,677	\$26,138,675	\$22,241,599	\$2,357,872	85.09%
2.02 OFCI and Other Construction					
UNCOMMITTED	\$12,762	\$0	\$0	\$0	
ACCO ENGINEERED SYSTEMS INC	\$355,544	\$355,544	\$335,681	\$0	94.41%
AMERICAN REPROGRAPHICS CO LLC	\$1,026	\$1,026	\$0	\$0	0.00%
ARROW RESTAURANT EQUIPMENT	\$14,232	\$14,232	\$14,213	\$0	99.87%
CAROLINA BIOLOGICAL SUPPLY	\$24,213	\$24,213	\$0	\$0	0.00%
DEVELOPMENT GROUP INC	\$52,939	\$52,939	\$52,939	\$0	100.00%
FAIR PLAY SCOREBOARDS	\$17,694	\$17,694	\$17,694	\$0	100.00%
FISHER SCIENCE EDUCATION	\$26,188	\$26,188	\$21,027	\$0	80.29%
FLINN SCIENTIFIC INC	\$12,364	\$12,364	\$12,364	\$0	100.00%
PROFESSIONAL TURF SPECIALTIES	\$23,460	\$23,460	\$23,460	\$0	100.00%
WW GRAINGER INC	\$6,039	\$6,039	\$4,081	\$0	67.58%
	\$546,461	\$533,699	\$481,460	\$0	88.11%



Measure S Bond Program
Financial Report for October 2021
Budget vs Actuals - By School and Budget Category with Vendor Detail

QSS Data thru 10/31/2021

	Budget	Contracted to Date	Expended to Date	Quarterly Expense Oct '21 - Dec '21	% Expended
3. Program and Construction Management					
3.01 Program Management Fees					
UNCOMMITTED	\$7,817	\$0	\$0	\$0	
CUMMING CONSTRUCTION MGMT INC	\$1,420,299	\$1,420,299	\$1,011,756	\$162,093	71.24%
	\$1,428,116	\$1,420,299	\$1,011,756	\$162,093	70.85%
3.02 Construction Management Fees					
UNCOMMITTED	\$3,200	\$0	\$0	\$0	
ARCADIS U.S. INC	\$2,348,909	\$2,348,909	\$2,242,762	\$18,980	95.48%
CORDOBA CORPORATION	\$90,336	\$90,336	\$90,336	\$0	100.00%
	\$2,442,445	\$2,439,245	\$2,333,098	\$18,980	95.52%
4. Construction Support Costs					
4.01 Rental					
UNCOMMITTED	\$0	\$0	\$0	\$0	
	\$0	\$0	\$0	\$0	
4.02 Title, Environmental, Stormwater Management					
UNCOMMITTED	\$25,259	\$0	\$0	\$0	
CHICAGO TITLE COMPANY	\$1,500	\$1,500	\$1,500	\$0	100.00%
CITY OF ORANGE (PUBLIC WORKS)	\$71	\$71	\$71	\$0	100.00%
CITY OF ORANGE (WATER DIVISION)	\$16,048	\$16,048	\$10,942	\$0	68.18%
ENVIRONMENTAL AUDIT INC	\$10,950	\$10,950	\$8,548	\$0	78.06%
OUSD COST OF INTEREST DISTRIBUTION	\$1	\$1	\$1	\$0	100.00%
	\$53,829	\$28,570	\$21,061	\$0	39.13%
4.03 Commissioning					
UNCOMMITTED	\$6,112	\$0	\$0	\$0	
P2S ENGINEERING INC	\$30,558	\$30,558	\$27,601	\$0	90.32%
	\$36,670	\$30,558	\$27,601	\$0	75.27%
4.04 Builders Risk Insurance					
UNCOMMITTED	\$0	\$0	\$0	\$0	
	\$0	\$0	\$0	\$0	
4.05 DSA Review Fees					
UNCOMMITTED	\$0	\$0	\$0	\$0	
DIVISION OF STATE ARCHITECT	\$306,338	\$306,338	\$306,338	\$0	100.00%
	\$306,338	\$306,338	\$306,338	\$0	100.00%
4.06 Postage, Printing & Advertising					
UNCOMMITTED	\$9,947	\$0	\$0	\$0	
AMERICAN REPROGRAPHICS CO LLC	\$20,110	\$20,110	\$19,155	\$0	95.25%
SOUTHERN CALIFORNIA NEWS GROUP	\$2,024	\$2,024	\$2,024	\$0	100.00%
	\$32,081	\$22,134	\$21,179	\$0	66.02%
4.07 DSA Inspection (IOR)					



Measure S Bond Program

Financial Report for October 2021

Budget vs Actuals - By School and Budget Category with Vendor Detail

QSS Data thru 10/31/2021

	Budget	Contracted to Date	Expended to Date	Quarterly Expense Oct '21 - Dec '21	% Expended
UNCOMMITTED	\$172,750	\$0	\$0	\$0	
BPI INSPECTION SERVICE	\$556,819	\$556,819	\$549,924	\$0	98.76%
	\$729,569	\$556,819	\$549,924	\$0	75.38%
4.08 DSA Construction Phase Testing (LOR)					
UNCOMMITTED	\$0	\$0	\$0	\$0	
KOURY ENGINEERING & TESTING INC (Geotechnical Engineering)	\$777,886	\$777,886	\$738,916	\$14,740	94.99%
	\$777,886	\$777,886	\$738,916	\$14,740	94.99%
4.09 Relocation					
UNCOMMITTED	\$16,319	\$0	\$0	\$0	
Beltmann Group, Inc.	\$7,080	\$7,080	\$850	\$0	12.01%
ULINE INC	\$1,601	\$1,601	\$701	\$0	43.79%
	\$25,000	\$8,681	\$1,551	\$0	6.21%
4.10 Labor Compliance					
UNCOMMITTED	\$0	\$0	\$0	\$0	
	\$0	\$0	\$0	\$0	
4.11 Preliminary Testing (Hazmat, Topo, Geo, etc)					
UNCOMMITTED	\$13,619	\$0	\$0	\$0	
ALLEGIAN FIRE PROTECTION INC	\$525	\$525	\$525	\$0	100.00%
CALIFORNIA GEOLOGICAL SURVEY (Geology and Seismology Review)	\$3,600	\$3,600	\$3,600	\$0	100.00%
ENVIRONMENTAL NETWORK CORPORATION	\$6,000	\$6,000	\$5,410	\$0	90.17%
HARLEY ELLIS DEVEREAUX	\$14,908	\$14,908	\$14,908	\$0	100.00%
NINYO & MOORE	\$29,981	\$29,981	\$29,771	\$0	99.30%
PCA ARBORISTS & CONSULTANTS INC	\$1,569	\$1,569	\$1,569	\$0	100.00%
THE CONVERSE PROFESSIONAL GROUP (Soils Investigation)	\$30,640	\$30,640	\$30,640	\$0	100.00%
	\$100,842	\$87,223	\$86,423	\$0	85.70%
4.12 Utility Connection Fees (Local Permits)					
UNCOMMITTED	\$76,261	\$0	\$0	\$0	
DIVISION OF STATE ARCHITECT	\$0	\$0	\$0	\$0	
SOUTHERN CALIFORNIA EDISON	\$3,665	\$3,665	\$3,665	\$0	100.00%
STATE WATER RESOURCES CONTROL BOARD (SWRCB)	\$993	\$993	\$993	\$0	100.00%
	\$80,919	\$4,658	\$4,658	\$0	5.76%
4.13 FF&E (Laboratory Tables and Chairs, other)					
UNCOMMITTED	\$37,999	\$0	\$0	\$0	
CDW GOVERNMENT INC (Parts for IP Camera Systems)	\$59,662	\$69,999	\$0	\$0	0.00%
INTER-PACIFIC INC	\$9,256	\$9,256	\$9,256	\$0	100.00%
SIERRA SCHOOL EQUIPMENT COMPANY	\$495,446	\$495,446	\$331,949	\$0	67.00%
TURTLE STORAGE dba AMERICAN BICYCLE CO	\$6,871	\$6,871	\$6,314	\$6,314	91.89%
VWR INTERNATIONAL LLC	\$47,922	\$52,714	\$47,922	\$0	100.00%
	\$657,156	\$634,286	\$395,441	\$6,314	60.17%
4.14 Legal Counsel					



Measure S Bond Program

Financial Report for October 2021

Budget vs Actuals - By School and Budget Category with Vendor Detail

QSS Data thru 10/31/2021

	Budget	Contracted to Date	Expended to Date	Quarterly Expense Oct '21 - Dec '21	% Expended
UNCOMMITTED	\$0	\$0	\$0	\$0	
	\$0	\$0	\$0	\$0	
4.15 Miscellaneous Fees					
UNCOMMITTED	\$0	\$0	\$0	\$0	
	\$0	\$0	\$0	\$0	
5. Contingency					
5.01 Construction Contingency					
UNCOMMITTED	\$1,661,123	\$0	\$0	\$0	
	\$1,661,123	\$0	\$0	\$0	0.00%
5.02 Project Contingency					
UNCOMMITTED	\$1,648,951	\$0	\$0	\$0	
ARCADIS U.S. INC	\$0	\$0	\$0	\$0	
	\$1,648,951	\$0	\$0	\$0	0.00%
Total 391-9520 El Modena HS Science Center (DSA 04-117098)	\$39,183,426	\$35,506,435	\$30,530,589	\$2,929,476	77.92%
391-9520 El Modena HS Phase II (DSA 04-120032)					
1. Design Cost					
1.01 Architect					
UNCOMMITTED	\$0	\$0	\$0	\$0	
HARLEY ELLIS DEVEREAUX	\$1,918,220	\$1,918,220	\$1,336,190	\$18,648	69.66%
	\$1,918,220	\$1,918,220	\$1,336,190	\$18,648	69.66%
3. Program and Construction Management					
3.01 Program Management Fees					
UNCOMMITTED	\$0	\$0	\$0	\$0	
CUMMING CONSTRUCTION MGMT INC	\$199,612	\$199,612	\$74,674	\$15,536	37.41%
	\$199,612	\$199,612	\$74,674	\$15,536	37.41%
3.02 Construction Management Fees					
UNCOMMITTED	\$1,050	\$0	\$0	\$0	
CORDOBA CORPORATION	\$515,353	\$515,353	\$72,185	\$18,470	14.01%
	\$516,403	\$515,353	\$72,185	\$18,470	13.98%
4. Construction Support Costs					
4.03 Commissioning					
UNCOMMITTED	\$0	\$0	\$0	\$0	
P2S ENGINEERING INC	\$11,890	\$11,890	\$3,330	\$0	28.01%
	\$11,890	\$11,890	\$3,330	\$0	28.01%
4.05 DSA Review Fees					
UNCOMMITTED	\$0	\$0	\$0	\$0	



Measure S Bond Program

Financial Report for October 2021

Budget vs Actuals - By School and Budget Category with Vendor Detail

QSS Data thru 10/31/2021

	Budget	Contracted to Date	Expended to Date	Quarterly Expense Oct '21 - Dec '21	% Expended
DIVISION OF STATE ARCHITECT	\$212,750	\$212,750	\$212,750	\$0	100.00%
	\$212,750	\$212,750	\$212,750	\$0	100.00%
4.06 Postage, Printing & Advertising					
UNCOMMITTED	\$0	\$0	\$0	\$0	
AMERICAN REPROGRAPHICS CO LLC	\$8,000	\$8,000	\$0	\$0	0.00%
	\$8,000	\$8,000	\$0	\$0	0.00%
4.09 Relocation					
UNCOMMITTED	\$0	\$0	\$0	\$0	
Beltmann Group, Inc.	\$3,500	\$3,500	\$0	\$0	0.00%
	\$3,500	\$3,500	\$0	\$0	0.00%
4.11 Preliminary Testing (Hazmat, Topo, Geo, etc)					
UNCOMMITTED	\$11,500	\$0	\$0	\$0	
ARMSTRONG & BROOKS CONSULTING ENG	\$20,000	\$20,000	\$4,940	\$0	24.70%
GROUP DELTA CONSULTANTS INC	\$17,100	\$17,100	\$10,004	\$0	58.50%
KOURY ENGINEERING & TESTING INC (Geotechnical Engineering)	\$22,350	\$22,350	\$22,350	\$0	100.00%
	\$70,950	\$59,450	\$37,294	\$0	52.56%
Total 391-9520 El Modena HS Phase II (DSA 04-120032)	\$2,941,325	\$2,928,775	\$1,736,422	\$52,654	59.04%
391-9520 El Modena HS Quad Shade Structures (DSA 04-119124)					
1. Design Cost					
1.01 Architect					
UNCOMMITTED	\$0	\$0	\$0	\$0	
HARLEY ELLIS DEVEREAUX	\$79,340	\$79,340	\$0	\$0	0.00%
	\$79,340	\$79,340	\$0	\$0	0.00%
4. Construction Support Costs					
4.02 Title, Environmental, Stormwater Management					
UNCOMMITTED	\$0	\$0	\$0	\$0	
	\$0	\$0	\$0	\$0	
4.05 DSA Review Fees					
UNCOMMITTED	\$0	\$0	\$0	\$0	
DIVISION OF STATE ARCHITECT	\$9,650	\$9,650	\$9,650	\$0	100.00%
	\$9,650	\$9,650	\$9,650	\$0	100.00%
4.06 Postage, Printing & Advertising					
UNCOMMITTED	\$0	\$0	\$0	\$0	
AMERICAN REPROGRAPHICS CO LLC	\$86	\$86	\$86	\$0	100.00%
	\$86	\$86	\$86	\$0	100.00%
Total 391-9520 El Modena HS Quad Shade Structures (DSA 04-119124)	\$89,076	\$89,076	\$9,736	\$0	10.93%



Measure S Bond Program

Financial Report for October 2021

Budget vs Actuals - By School and Budget Category with Vendor Detail

QSS Data thru 10/31/2021

	Budget	Contracted to Date	Expended to Date	Quarterly Expense Oct '21 - Dec '21	% Expended
391-TBD El Modena HS Science Center Unallocated Funds F22					
5. Unallocated Bond Funds					
5.04 Unallocated Bond Funds					
UNCOMMITTED	\$1,138,078	\$0	\$0	\$0	
	\$1,138,078	\$0	\$0	\$0	0.00%
Total 391-TBD El Modena HS Science Center Unallocated Funds F22	\$1,138,078	\$0	\$0	\$0	0.00%
391-9520 El Modena HS Unallocated Funds F21					
4. Construction Support Costs					
4.15 Miscellaneous Fees					
UNCOMMITTED	\$0	\$0	\$0	\$0	
OUSD COST OF INTEREST DISTRIBUTION	\$53,330	\$53,330	\$53,330	\$0	100.00%
	\$53,330	\$53,330	\$53,330	\$0	100.00%
5. Program Reserve					
5.03 Interest Earned - Reserve					
UNCOMMITTED	\$77,419	\$0	\$0	\$0	
	\$77,419	\$0	\$0	\$0	0.00%
Total 391-9520 El Modena HS Unallocated Funds F21	\$130,749	\$53,330	\$53,330	\$0	40.79%
391-TBD El Modena HS Unallocated Funds F22					
5. Unallocated Bond Funds					
5.04 Unallocated Bond Funds					
UNCOMMITTED	\$30,017,362	\$0	\$0	\$0	
	\$30,017,362	\$0	\$0	\$0	0.00%
Total 391-TBD El Modena HS Unallocated Funds F22	\$30,017,362	\$0	\$0	\$0	0.00%
El Modena High School	\$73,581,196	\$38,658,795	\$32,411,257	\$2,982,129	44.05%
Orange High School					
392-0000 Orange HS IP Surveillance Camera and Systems					
4. Construction Support Costs					
4.13 FF&E (Laboratory Tables and Chairs, other)					
UNCOMMITTED	\$0	\$0	\$0	\$0	
CDW GOVERNMENT INC (Parts for IP Camera Systems)	\$53,662	\$53,662	\$53,662	\$0	100.00%
DIGITAL NETWORKS GROUP INC (F/I IP Camera Software)	\$13,569	\$13,569	\$13,569	\$0	100.00%
INTER-PACIFIC INC	\$34,837	\$34,837	\$34,837	\$0	100.00%
	\$102,068	\$102,068	\$102,068	\$0	100.00%



Measure S Bond Program

Financial Report for October 2021

Budget vs Actuals - By School and Budget Category with Vendor Detail

QSS Data thru 10/31/2021

	Budget	Contracted to Date	Expended to Date	Quarterly Expense Oct '21 - Dec '21	% Expended
Total 392-0000 Orange HS IP Surveillance Camera and Systems	\$102,068	\$102,068	\$102,068	\$0	100.00%
392-9520 Orange HS Science Bldg (DSA 04-116859)					
1. Design Cost					
1.01 Architect					
UNCOMMITTED	\$151,933	\$0	\$0	\$0	
LIONAKIS	\$1,854,196	\$1,854,196	\$1,823,479	\$115	98.34%
	\$2,006,129	\$1,854,196	\$1,823,479	\$115	90.90%
2. Construction Cost					
2.01 Construction					
UNCOMMITTED	\$1	\$0	\$0	\$0	
GIANNELLI ELECTRIC INC	\$14,878	\$14,878	\$14,878	\$0	100.00%
INTEGRATED DEMOLITION AND REMEDIATION (Abatement and Demolition)	\$44,800	\$44,800	\$44,800	\$0	100.00%
J & A FENCE (Custodial Storage Fencing)	\$0	\$0	\$0	\$0	
KYA SERVICES LLC (Install Carpet)	\$0	\$0	\$0	\$0	
OLESH, KEITH (Termite Services)	\$0	\$0	\$0	\$0	
PINNER CONSTRUCTION	\$27,190,987	\$27,190,987	\$27,190,987	\$0	100.00%
SOUTHERN CALIFORNIA NEWS GROUP	\$0	\$0	\$0	\$0	
TIME & ALARM SYSTEMS	\$3,100	\$3,100	\$3,100	\$0	100.00%
UNIVERSAL ASPHALT CO (Remove and Patch Asphalt)	\$6,830	\$6,830	\$6,830	\$0	100.00%
	\$27,260,596	\$27,260,595	\$27,260,595	\$0	100.00%
2.02 OFCI and Other Construction					
UNCOMMITTED	\$69,720	\$0	\$0	\$0	
ACCO ENGINEERED SYSTEMS INC	\$62,883	\$62,883	\$62,883	\$0	100.00%
AMERICAN REPROGRAPHICS CO LLC	\$1,026	\$1,026	\$0	\$0	0.00%
ARROW RESTAURANT EQUIPMENT	\$13,556	\$13,556	\$13,432	\$0	99.08%
CAROLINA BIOLOGICAL SUPPLY	\$16,559	\$16,559	\$16,480	\$0	99.52%
CITY OF ORANGE (PUBLIC WORKS)	\$2,000	\$2,000	\$2,000	\$0	100.00%
DEVELOPMENT GROUP INC	\$37,866	\$37,866	\$37,866	\$0	100.00%
FISHER SCIENCE EDUCATION	\$25,736	\$25,736	\$24,863	\$0	96.61%
FLINN SCIENTIFIC INC	\$10,263	\$10,263	\$10,263	\$0	100.00%
GIANNELLI ELECTRIC INC	\$24,684	\$24,684	\$24,684	\$0	100.00%
GRUETT TREE CO INC (Removal of Trees)	\$7,625	\$7,625	\$7,625	\$0	100.00%
J & A FENCE (Custodial Storage Fencing)	\$6,885	\$6,885	\$6,885	\$0	100.00%
KYA SERVICES LLC (Install Carpet)	\$0	\$0	\$0	\$0	
OLESH, KEITH (Termite Services)	\$1,500	\$1,500	\$1,500	\$0	100.00%
SOUTHERN CALIFORNIA NEWS GROUP	\$0	\$0	\$0	\$0	
TRIMARK RAYGAL LLC	\$0	\$0	\$0	\$0	



Measure S Bond Program

Financial Report for October 2021

Budget vs Actuals - By School and Budget Category with Vendor Detail

QSS Data thru 10/31/2021

	Budget	Contracted to Date	Expended to Date	Quarterly Expense Oct '21 - Dec '21	% Expended
VORTEX INDUSTRIES, INC.	\$6,804	\$6,804	\$6,804	\$0	100.00%
WW GRAINGER INC	\$2,292	\$2,292	\$2,292	\$0	100.00%
	\$289,399	\$219,679	\$217,576	\$0	75.18%
3. Program and Construction Management					
3.01 Program Management Fees					
UNCOMMITTED	\$531,596	\$0	\$0	\$0	
CUMMING CONSTRUCTION MGMT INC	\$1,010,155	\$1,062,336	\$979,395	\$11,235	96.95%
	\$1,541,750	\$1,062,336	\$979,395	\$11,235	63.52%
3.02 Construction Management Fees					
UNCOMMITTED	\$59,981	\$0	\$0	\$0	
BALFOUR BEATTY CONSTRUCTION	\$1,757,253	\$1,757,254	\$1,755,159	\$0	99.88%
CORDOBA CORPORATION	\$86,549	\$86,549	\$86,434	\$0	99.87%
	\$1,903,783	\$1,843,803	\$1,841,593	\$0	96.73%
4. Construction Support Costs					
4.01 Rental					
UNCOMMITTED	\$0	\$0	\$0	\$0	
	\$0	\$0	\$0	\$0	
4.02 Title, Environmental, Stormwater Management					
UNCOMMITTED	\$47,386	\$0	\$0	\$0	
CHICAGO TITLE COMPANY	\$1,500	\$1,500	\$1,500	\$0	100.00%
OUSD COST OF INTEREST DISTRIBUTION	\$1	\$1	\$1	\$0	100.00%
PLACEWORKS INC	\$52,231	\$52,231	\$52,231	\$0	100.00%
STATE WATER RESOURCES CONTROL BOARD (SWRCB)	\$726	\$726	\$726	\$0	100.00%
	\$101,844	\$54,458	\$54,458	\$0	53.47%
4.03 Commissioning					
UNCOMMITTED	\$6,117	\$0	\$0	\$0	
P2S ENGINEERING INC	\$30,585	\$30,585	\$30,170	\$0	98.64%
	\$36,702	\$30,585	\$30,170	\$0	82.20%
4.04 Builders Risk Insurance					
UNCOMMITTED	\$0	\$0	\$0	\$0	
	\$0	\$0	\$0	\$0	
4.05 DSA Review Fees					
UNCOMMITTED	\$28,992	\$0	\$0	\$0	
DIVISION OF STATE ARCHITECT	\$342,871	\$342,871	\$342,871	\$0	100.00%
OUSD REVOLVING CASH	\$500	\$500	\$500	\$0	100.00%
	\$372,364	\$343,371	\$343,371	\$0	92.21%
4.06 Postage, Printing & Advertising					
UNCOMMITTED	\$36,374	\$0	\$0	\$0	
AMERICAN REPROGRAPHICS CO LLC	\$11,734	\$11,734	\$8,734	\$0	74.43%



Measure S Bond Program

Financial Report for October 2021

Budget vs Actuals - By School and Budget Category with Vendor Detail

QSS Data thru 10/31/2021

	Budget	Contracted to Date	Expended to Date	Quarterly Expense Oct '21 - Dec '21	% Expended
SOUTHERN CALIFORNIA NEWS GROUP	\$8,518	\$8,518	\$8,518	\$0	100.00%
	\$56,626	\$20,252	\$17,252	\$0	30.47%
4.07 DSA Inspection (IOR)					
UNCOMMITTED	\$145,585	\$0	\$0	\$0	
KNOWLAND CONSTRUCTION SERVICES	\$321,507	\$321,507	\$286,404	\$0	89.08%
	\$467,092	\$321,507	\$286,404	\$0	61.32%
4.08 DSA Construction Phase Testing (LOR)					
UNCOMMITTED	\$125,025	\$0	\$0	\$0	
NINYO & MOORE	\$327,624	\$327,624	\$227,848	\$0	69.55%
	\$452,649	\$327,624	\$227,848	\$0	50.34%
4.09 Relocation					
UNCOMMITTED	\$15,706	\$0	\$0	\$0	
Beltmann Group, Inc.	\$6,229	\$6,229	\$4,876	\$0	78.27%
ULINE INC	\$3,065	\$3,065	\$3,065	\$0	100.00%
	\$25,000	\$9,294	\$7,941	\$0	31.76%
4.10 Labor Compliance					
UNCOMMITTED	\$40,951	\$0	\$0	\$0	
	\$40,951	\$0	\$0	\$0	0.00%
4.11 Preliminary Testing (Hazmat, Topo, Geo, etc)					
UNCOMMITTED	\$198,437	\$0	\$0	\$0	
CALIFORNIA GEOLOGICAL SURVEY (Geology and Seismology Review)	\$3,600	\$3,600	\$3,600	\$0	100.00%
ENVIRONMENTAL NETWORK CORPORATION	\$4,925	\$4,925	\$2,590	\$0	52.59%
KOURY ENGINEERING & TESTING INC (Geotechnical Engineering)	\$13,300	\$13,300	\$13,300	\$0	100.00%
PENCO ENGINEERING INC (Topographical Survey Services)	\$42,350	\$42,350	\$41,070	\$0	96.98%
RMA GROUP (dba SITESCAN)	\$49,533	\$49,533	\$49,533	\$0	100.00%
	\$312,145	\$113,708	\$110,093	\$0	35.27%
4.12 Utility Connection Fees (Local Permits)					
UNCOMMITTED	\$151,714	\$0	\$0	\$0	
CITY OF ORANGE (PUBLIC WORKS)	\$2,500	\$2,500	\$2,500	\$0	100.00%
SOUTHERN CALIFORNIA EDISON	\$6,912	\$6,912	\$6,912	\$0	100.00%
SOUTHERN CALIFORNIA GAS CO	\$2,124	\$2,124	\$2,124	\$0	100.00%
STATE WATER RESOURCES CONTROL BOARD (SWRCB)	\$553	\$553	\$553	\$0	100.00%
	\$163,803	\$12,089	\$12,089	\$0	7.38%
4.13 FF&E (Laboratory Tables and Chairs, other)					
UNCOMMITTED	\$10,748	\$0	\$0	\$0	
CDW GOVERNMENT INC (Parts for IP Camera Systems)	\$59,662	\$59,662	\$59,658	\$0	99.99%
CONEXWEST	\$9,466	\$9,466	\$9,419	\$0	99.51%
CP PRODUCTS INC	\$4,834	\$4,834	\$4,834	\$0	100.00%
DEVELOPMENT GROUP INC	\$0	\$0	\$0	\$0	
FISHER SCIENCE EDUCATION	\$0	\$0	\$0	\$0	



Measure S Bond Program

Financial Report for October 2021

Budget vs Actuals - By School and Budget Category with Vendor Detail

QSS Data thru 10/31/2021

	Budget	Contracted to Date	Expended to Date	Quarterly Expense Oct '21 - Dec '21	% Expended
GORM	\$11,423	\$11,423	\$11,415	\$0	99.93%
HILLYARD INC	\$32,572	\$32,572	\$32,572	\$0	100.00%
INTER-PACIFIC INC	\$7,904	\$7,904	\$7,904	\$0	100.00%
PSI DBA WATER VISIONS INC	\$8,527	\$8,527	\$8,527	\$0	100.00%
SIERRA SCHOOL EQUIPMENT COMPANY	\$464,248	\$464,248	\$464,248	\$0	100.00%
TURTLE STORAGE dba AMERICAN BICYCLE CO	\$6,871	\$6,871	\$6,537	\$0	95.14%
VORTEX INDUSTRIES, INC.	\$0	\$0	\$0	\$0	
VWR INTERNATIONAL LLC	\$34,314	\$34,314	\$34,314	\$0	100.00%
	\$650,570	\$639,821	\$639,428	\$0	98.29%
4.14 Legal Counsel					
UNCOMMITTED	\$81,902	\$0	\$0	\$0	
	\$81,902	\$0	\$0	\$0	0.00%
4.15 Miscellaneous Fees					
UNCOMMITTED	\$0	\$0	\$0	\$0	
	\$0	\$0	\$0	\$0	
5. Contingency					
5.01 Construction Contingency					
UNCOMMITTED	\$1,415,413	\$0	\$0	\$0	
	\$1,415,413	\$0	\$0	\$0	0.00%
5.02 Project Contingency					
UNCOMMITTED	\$4,397,107	\$0	\$0	\$0	
	\$4,397,107	\$0	\$0	\$0	0.00%
Total 392-9520 Orange HS Science Bldg (DSA 04-116859)	\$41,575,825	\$34,113,318	\$33,851,691	\$11,350	81.42%
392-9520 Orange HS Shade Structure (DSA 04-118351)					
1. Design Cost					
1.01 Architect					
UNCOMMITTED	\$0	\$0	\$0	\$0	
LIONAKIS	\$17,317	\$17,317	\$17,317	\$0	100.00%
	\$17,317	\$17,317	\$17,317	\$0	100.00%
2. Construction Cost					
2.01 Construction					
UNCOMMITTED	\$0	\$0	\$0	\$0	
PINNER CONSTRUCTION	\$113,500	\$113,500	\$113,500	\$0	100.00%
	\$113,500	\$113,500	\$113,500	\$0	100.00%
3. Program and Construction Management					
3.01 Program Management Fees					



Measure S Bond Program

Financial Report for October 2021

Budget vs Actuals - By School and Budget Category with Vendor Detail

QSS Data thru 10/31/2021

	Budget	Contracted to Date	Expended to Date	Quarterly Expense Oct '21 - Dec '21	% Expended
UNCOMMITTED	\$0	\$0	\$0	\$0	
CUMMING CONSTRUCTION MGMT INC	\$1,838	\$1,838	\$1,838	\$0	100.00%
	\$1,838	\$1,838	\$1,838	\$0	100.00%
3.02 Construction Management Fees					
UNCOMMITTED	\$0	\$0	\$0	\$0	
BALFOUR BEATTY CONSTRUCTION	\$5,956	\$5,956	\$5,956	\$0	100.00%
	\$5,956	\$5,956	\$5,956	\$0	100.00%
4. Construction Support Costs					
4.05 DSA Review Fees					
UNCOMMITTED	\$0	\$0	\$0	\$0	
DIVISION OF STATE ARCHITECT	\$1,873	\$1,873	\$1,873	\$0	100.00%
	\$1,873	\$1,873	\$1,873	\$0	100.00%
4.07 DSA Inspection (IOR)					
UNCOMMITTED	\$0	\$0	\$0	\$0	
KNOWLAND CONSTRUCTION SERVICES	\$1,740	\$1,740	\$1,740	\$0	100.00%
	\$1,740	\$1,740	\$1,740	\$0	100.00%
4.08 DSA Construction Phase Testing (LOR)					
UNCOMMITTED	\$0	\$0	\$0	\$0	
NINYO & MOORE	\$7,408	\$7,408	\$7,408	\$0	100.00%
	\$7,408	\$7,408	\$7,408	\$0	100.00%
Total 392-9520 Orange HS Shade Structure (DSA 04-118351)	\$149,631	\$149,631	\$149,631	\$0	100.00%
392-9520 Orange HS Site Improvements (DSA 04-116673)					
1. Design Cost					
1.01 Architect					
UNCOMMITTED	\$0	\$0	\$0	\$0	
LIONAKIS	\$450,189	\$450,189	\$446,286	\$0	99.13%
SILVER CREEK INDUSTRIES INC (Engineering for Warming Kitchen Relocatable Building)	\$29,682	\$29,682	\$29,682	\$0	100.00%
	\$479,871	\$479,871	\$475,968	\$0	99.19%
2. Construction Cost					
2.01 Construction					
UNCOMMITTED	\$0	\$0	\$0	\$0	
KYA SERVICES LLC (Install Carpet)	\$20,824	\$20,824	\$9,564	\$0	45.93%
SWINERTON BUILDERS	\$6,556,428	\$6,556,428	\$6,556,428	\$0	100.00%
TRIMARK RAYGAL LLC	\$89,860	\$89,860	\$89,860	\$0	100.00%
	\$6,667,112	\$6,667,112	\$6,655,852	\$0	99.83%
2.02 OFCI and Other Construction					



Measure S Bond Program

Financial Report for October 2021

Budget vs Actuals - By School and Budget Category with Vendor Detail

QSS Data thru 10/31/2021

	Budget	Contracted to Date	Expended to Date	Quarterly Expense Oct '21 - Dec '21	% Expended
UNCOMMITTED	\$0	\$0	\$0	\$0	
ACCO ENGINEERED SYSTEMS INC	\$209,074	\$209,074	\$209,074	\$0	100.00%
	\$209,074	\$209,074	\$209,074	\$0	100.00%
3. Program and Construction Management					
3.01 Program Management Fees					
CUMMING CONSTRUCTION MGMT INC	\$115,479	\$115,479	\$115,479	\$0	100.00%
	\$115,479	\$115,479	\$115,479	\$0	100.00%
3.02 Construction Management Fees					
UNCOMMITTED	\$0	\$0	\$0	\$0	
BALFOUR BEATTY CONSTRUCTION	\$296,554	\$296,554	\$296,554	\$0	100.00%
	\$296,554	\$296,554	\$296,554	\$0	100.00%
4. Construction Support Costs					
4.02 Title, Environmental, Stormwater Management					
UNCOMMITTED	\$0	\$0	\$0	\$0	
ORANGE COUNTY HEALTH CARE AGENCY	\$1,470	\$1,470	\$1,470	\$0	100.00%
	\$1,470	\$1,470	\$1,470	\$0	100.00%
4.03 Commissioning					
UNCOMMITTED	\$0	\$0	\$0	\$0	
P2S ENGINEERING INC	\$4,755	\$4,755	\$4,667	\$0	98.15%
	\$4,755	\$4,755	\$4,667	\$0	98.15%
4.05 DSA Review Fees					
UNCOMMITTED	\$3,853	\$0	\$0	\$0	
DIVISION OF STATE ARCHITECT	\$94,585	\$94,585	\$94,585	\$0	100.00%
	\$98,438	\$94,585	\$94,585	\$0	96.09%
4.06 Postage, Printing & Advertising					
UNCOMMITTED	\$1	\$0	\$0	\$0	
AMERICAN REPROGRAPHICS CO LLC	\$7,630	\$7,630	\$7,630	\$0	100.00%
SOUTHERN CALIFORNIA NEWS GROUP	\$1,264	\$1,264	\$1,264	\$0	100.00%
	\$8,895	\$8,894	\$8,894	\$0	99.99%
4.07 DSA Inspection (IOR)					
UNCOMMITTED	\$0	\$0	\$0	\$0	
KNOWLAND CONSTRUCTION SERVICES	\$104,480	\$104,480	\$96,985	\$0	92.83%
	\$104,480	\$104,480	\$96,985	\$0	92.83%
4.08 DSA Construction Phase Testing (LOR)					
UNCOMMITTED	\$0	\$0	\$0	\$0	
NINYO & MOORE	\$113,255	\$113,255	\$112,544	\$0	99.37%
	\$113,255	\$113,255	\$112,544	\$0	99.37%
4.11 Preliminary Testing (Hazmat, Topo, Geo, etc)					
UNCOMMITTED	\$0	\$0	\$0	\$0	



Measure S Bond Program

Financial Report for October 2021

Budget vs Actuals - By School and Budget Category with Vendor Detail

QSS Data thru 10/31/2021

	Budget	Contracted to Date	Expended to Date	Quarterly Expense Oct '21 - Dec '21	% Expended
ENVIRONMENTAL NETWORK CORPORATION	\$9,100	\$9,100	\$9,012	\$0	99.03%
	\$9,100	\$9,100	\$9,012	\$0	99.03%
Total 392-9520 Orange HS Site Improvements (DSA 04-116673)	\$8,108,482	\$8,104,629	\$8,081,083	\$0	99.66%
392-9520 Orange HS Phase II (DSA 04-120151)					
1. Design Cost					
1.01 Architect					
UNCOMMITTED	\$121,050	\$0	\$0	\$0	
LIONAKIS	\$1,409,450	\$1,409,450	\$925,868	\$10,270	65.69%
	\$1,530,500	\$1,409,450	\$925,868	\$10,270	60.49%
3. Program and Construction Management					
3.01 Program Management Fees					
UNCOMMITTED	\$1	\$0	\$0	\$0	
CUMMING CONSTRUCTION MGMT INC	\$201,328	\$201,328	\$74,857	\$25,458	37.18%
	\$201,329	\$201,328	\$74,857	\$25,458	37.18%
3.02 Construction Management Fees					
UNCOMMITTED	\$2,100	\$0	\$0	\$0	
CORDOBA CORPORATION	\$511,365	\$511,365	\$65,778	\$16,051	12.86%
	\$513,465	\$511,365	\$65,778	\$16,051	12.81%
4. Construction Support Costs					
4.03 Commissioning					
UNCOMMITTED	\$0	\$0	\$0	\$0	
P2S ENGINEERING INC	\$4,801	\$4,801	\$1,025	\$0	21.35%
	\$4,801	\$4,801	\$1,025	\$0	21.35%
4.05 DSA Review Fees					
UNCOMMITTED	\$0	\$0	\$0	\$0	
DIVISION OF STATE ARCHITECT	\$153,550	\$153,550	\$153,550	\$0	100.00%
	\$153,550	\$153,550	\$153,550	\$0	100.00%
4.06 Postage, Printing & Advertising					
UNCOMMITTED	\$0	\$0	\$0	\$0	
AMERICAN REPROGRAPHICS CO LLC	\$14,000	\$14,000	\$137	\$0	0.98%
	\$14,000	\$14,000	\$137	\$0	0.98%
4.09 Relocation					
UNCOMMITTED	\$1,762	\$0	\$0	\$0	
Beltmann Group, Inc.	\$6,851	\$6,851	\$6,519	\$0	95.15%
ULINE INC	\$800	\$800	\$0	\$0	0.00%
	\$9,413	\$7,651	\$6,519	\$0	69.25%
4.11 Preliminary Testing (Hazmat, Topo, Geo, etc)					



Measure S Bond Program
Financial Report for October 2021
Budget vs Actuals - By School and Budget Category with Vendor Detail

QSS Data thru 10/31/2021

	Budget	Contracted to Date	Expended to Date	Quarterly Expense Oct '21 - Dec '21	% Expended
UNCOMMITTED	\$50,977	\$0	\$0	\$0	
CANNON CORPORATION	\$50,000	\$50,000	\$35,076	\$0	70.15%
ENVIRONMENTAL NETWORK CORPORATION	\$15,380	\$15,380	\$6,350	\$0	41.29%
NINYO & MOORE	\$20,955	\$20,955	\$20,955	\$0	100.00%
	\$137,312	\$86,335	\$62,381	\$0	45.43%
Total 392-9520 Orange HS Phase II (DSA 04-120151)	\$2,564,370	\$2,388,480	\$1,290,115	\$51,779	50.31%
392-TBD Orange HS Science Center Unallocated Funds F22					
5. Unallocated Bond Funds					
5.04 Unallocated Bond Funds					
UNCOMMITTED	\$1,520,780	\$0	\$0	\$0	
	\$1,520,780	\$0	\$0	\$0	0.00%
Total 392-TBD Orange HS Science Center Unallocated Funds F22	\$1,520,780	\$0	\$0	\$0	0.00%
392-9520 Orange HS Unallocated Funds F21					
5. Program Reserve					
5.03 Interest Earned - Reserve					
UNCOMMITTED	\$1,500,631	\$0	\$0	\$0	
	\$1,500,631	\$0	\$0	\$0	0.00%
4. Construction Support Costs					
4.15 Miscellaneous Fees					
UNCOMMITTED	\$0	\$0	\$0	\$0	
OUSD COST OF INTEREST DISTRIBUTION	\$49,221	\$49,221	\$49,221	\$0	100.00%
	\$49,221	\$49,221	\$49,221	\$0	100.00%
Total 392-9520 Orange HS Unallocated Funds F21	\$1,549,853	\$49,221	\$49,221	\$0	3.18%
392-TBD Orange HS Unallocated Funds F22					
5. Unallocated Bond Funds					
5.04 Unallocated Bond Funds					
UNCOMMITTED	\$17,978,844	\$0	\$0	\$0	
	\$17,978,844	\$0	\$0	\$0	0.00%
Total 392-TBD Orange HS Unallocated Funds F22	\$17,978,844	\$0	\$0	\$0	0.00%
Orange High School	\$73,549,853	\$44,907,346	\$43,523,809	\$63,129	59.18%
Villa Park High School					



Measure S Bond Program

Financial Report for October 2021

Budget vs Actuals - By School and Budget Category with Vendor Detail

QSS Data thru 10/31/2021

	Budget	Contracted to Date	Expended to Date	Quarterly Expense Oct '21 - Dec '21	% Expended
394-0000 Villa Park HS IP Surveillance Camera and Systems					
4. Construction Support Costs					
4.13 FF&E (Laboratory Tables and Chairs, other)					
UNCOMMITTED	\$0	\$0	\$0	\$0	
CDW GOVERNMENT INC (Parts for IP Camera Systems)	\$32,182	\$32,182	\$32,182	\$0	100.00%
DIGITAL NETWORKS GROUP INC (F/I IP Camera Software)	\$8,635	\$8,635	\$8,635	\$0	100.00%
INTER-PACIFIC INC	\$22,133	\$22,133	\$22,133	\$0	100.00%
	\$62,949	\$62,949	\$62,949	\$0	100.00%
Total 394-0000 Villa Park HS IP Surveillance Camera and Systems	\$62,949	\$62,949	\$62,949	\$0	100.00%
394-9520 Villa Park HS Science Center (DSA 04-117022)					
1. Design Cost					
1.01 Architect					
UNCOMMITTED	\$132,416	\$0	\$0	\$0	
DKS ASSOCIATES	\$85,690	\$85,690	\$80,657	\$0	94.13%
LIONAKIS	\$14,059	\$14,059	\$14,059	\$0	100.00%
LPA INC	\$2,472,131	\$2,472,131	\$2,400,411	\$18,235	97.10%
	\$2,704,296	\$2,571,880	\$2,495,127	\$18,235	92.27%
2. Construction Cost					
2.01 Construction					
UNCOMMITTED	\$138,538	\$0	\$0	\$0	
ANGELES CONTRACTOR, INC	\$20,232,690	\$20,232,690	\$15,522,857	\$805,660	76.72%
	\$20,371,228	\$20,232,690	\$15,522,857	\$805,660	76.20%
2.02 OFCI and Other Construction					
UNCOMMITTED	\$110,245	\$0	\$0	\$0	
ACCO ENGINEERED SYSTEMS INC	\$150,829	\$150,829	\$127,947	\$0	84.83%
AMERICAN REPROGRAPHICS CO LLC	\$1,026	\$1,026	\$0	\$0	0.00%
ARROW RESTAURANT EQUIPMENT	\$13,887	\$13,887	\$13,869	\$0	99.86%
CAROLINA BIOLOGICAL SUPPLY	\$24,213	\$24,213	\$0	\$0	0.00%
DEVELOPMENT GROUP INC	\$52,939	\$52,939	\$52,937	\$0	100.00%
FISHER SCIENCE EDUCATION	\$26,187	\$26,187	\$21,027	\$0	80.29%
FLINN SCIENTIFIC INC	\$12,364	\$12,364	\$12,364	\$12,364	100.00%
WW GRAINGER INC	\$3,043	\$3,043	\$1,148	\$0	37.74%
	\$394,733	\$284,488	\$229,291	\$12,364	58.09%
3. Program and Construction Management					
3.01 Program Management Fees					
UNCOMMITTED	\$120,084	\$0	\$0	\$0	
CORDOBA CORPORATION	\$0	\$0	\$0	\$0	



Measure S Bond Program

Financial Report for October 2021

Budget vs Actuals - By School and Budget Category with Vendor Detail

QSS Data thru 10/31/2021

	Budget	Contracted to Date	Expended to Date	Quarterly Expense Oct '21 - Dec '21	% Expended
CUMMING CONSTRUCTION MGMT INC	\$945,697	\$1,044,109	\$825,135	\$61,178	87.25%
	\$1,065,781	\$1,044,109	\$825,135	\$61,178	77.42%
3.02 Construction Management Fees					
UNCOMMITTED	\$6,082	\$0	\$0	\$0	
CORDOBA CORPORATION	\$1,998,493	\$1,998,493	\$1,956,156	\$0	97.88%
	\$2,004,575	\$1,998,493	\$1,956,156	\$0	97.58%
4. Construction Support Costs					
4.01 Rental					
UNCOMMITTED	\$0	\$0	\$0	\$0	
	\$0	\$0	\$0	\$0	0.00%
4.02 Title, Environmental, Stormwater Management					
UNCOMMITTED	\$36,668	\$0	\$0	\$0	
CHICAGO TITLE COMPANY	\$750	\$750	\$750	\$0	100.00%
OUSD COST OF INTEREST DISTRIBUTION	\$1	\$1	\$1	\$0	100.00%
PLACEWORKS INC	\$87,059	\$87,059	\$73,237	\$0	84.12%
STATE WATER RESOURCES CONTROL BOARD (SWRCB)	\$484	\$484	\$484	\$0	100.00%
	\$124,962	\$88,294	\$74,471	\$0	59.60%
4.03 Commissioning					
UNCOMMITTED	\$9,722	\$0	\$0	\$0	
P2S ENGINEERING INC	\$31,635	\$31,635	\$26,688	\$0	84.36%
	\$41,357	\$31,635	\$26,688	\$0	64.53%
4.04 Builders Risk Insurance					
UNCOMMITTED	\$0	\$0	\$0	\$0	
	\$0	\$0	\$0	\$0	
4.05 DSA Review Fees					
UNCOMMITTED	\$118,838	\$0	\$0	\$0	
DIVISION OF STATE ARCHITECT	\$289,250	\$289,250	\$289,250	\$0	100.00%
	\$408,088	\$289,250	\$289,250	\$0	70.88%
4.06 Postage, Printing & Advertising					
UNCOMMITTED	\$15,465	\$0	\$0	\$0	
AMERICAN REPROGRAPHICS CO LLC	\$16,315	\$16,315	\$12,630	\$0	77.41%
SOUTHERN CALIFORNIA NEWS GROUP	\$1,768	\$1,768	\$1,768	\$0	100.00%
	\$33,548	\$18,083	\$14,398	\$0	42.92%
4.07 DSA Inspection (IOR)					
UNCOMMITTED	\$1	\$0	\$0	\$0	
BPI INSPECTION SERVICE	\$606,215	\$606,215	\$457,093	\$0	75.40%
	\$606,216	\$606,215	\$457,093	\$0	75.40%
4.08 DSA Construction Phase Testing (LOR)					
UNCOMMITTED	\$0	\$0	\$0	\$0	
NINYO & MOORE	\$909,474	\$909,474	\$772,523	\$24,289	84.94%



Measure S Bond Program

Financial Report for October 2021

Budget vs Actuals - By School and Budget Category with Vendor Detail

QSS Data thru 10/31/2021

	Budget	Contracted to Date	Expended to Date	Quarterly Expense Oct '21 - Dec '21	% Expended
4.09 Relocation	\$909,474	\$909,474	\$772,523	\$24,289	84.94%
UNCOMMITTED	\$15,958	\$0	\$0	\$0	
Beltmann Group, Inc.	\$7,080	\$7,080	\$851	\$0	12.02%
ULINE INC	\$1,602	\$1,602	\$702	\$0	43.83%
	\$24,640	\$8,682	\$1,553	\$0	6.30%
4.10 Labor Compliance					
UNCOMMITTED	\$0	\$0	\$0	\$0	
	\$0	\$0	\$0	\$0	
4.11 Preliminary Testing (Hazmat, Topo, Geo, etc)					
UNCOMMITTED	\$1,657	\$0	\$0	\$0	
CALIFORNIA GEOLOGICAL SURVEY (Geology and Seismology Review)	\$3,600	\$3,600	\$3,600	\$0	100.00%
ENVIRONMENTAL NETWORK CORPORATION	\$19,215	\$19,215	\$19,085	\$0	99.32%
LEIGHTON CONSULTING INC (Geotechnical Engineering)	\$20,000	\$20,000	\$16,549	\$0	82.75%
PSOMAS	\$27,000	\$27,000	\$21,034	\$0	77.90%
RMA GROUP (dba SITESCAN)	\$53,125	\$53,125	\$44,890	\$0	84.50%
SPECTRUM FIRE PROTECTION (Fire Hydrant Flow Test)	\$1,000	\$1,000	\$1,000	\$0	100.00%
	\$125,597	\$123,940	\$106,158	\$0	84.52%
4.12 Utility Connection Fees (Local Permits)					
UNCOMMITTED	\$78,806	\$0	\$0	\$0	
SOUTHERN CALIFORNIA EDISON	\$400	\$400	\$400	\$0	100.00%
STATE WATER RESOURCES CONTROL BOARD (SWRCB)	\$1,699	\$1,699	\$1,699	\$0	100.00%
	\$80,905	\$2,099	\$2,099	\$0	2.59%
4.13 FF&E (Laboratory Tables and Chairs, other)					
UNCOMMITTED	\$86,460	\$0	\$0	\$0	
CDW GOVERNMENT INC (Parts for IP Camera Systems)	\$59,662	\$65,624	\$0	\$0	0.00%
CULVER-NEWLIN INC	\$12,359	\$12,359	\$12,359	\$0	100.00%
FLINN SCIENTIFIC INC	\$4,162	\$4,162	\$4,162	\$0	100.00%
INTER-PACIFIC INC	\$7,325	\$7,325	\$7,325	\$0	100.00%
SIERRA SCHOOL EQUIPMENT COMPANY	\$485,250	\$485,250	\$232,706	\$0	47.96%
TURTLE STORAGE dba AMERICAN BICYCLE CO	\$6,871	\$6,871	\$6,871	\$0	100.00%
VWR INTERNATIONAL LLC	\$47,922	\$52,714	\$47,922	\$0	100.00%
	\$710,011	\$634,305	\$311,345	\$0	43.85%
4.14 Legal Counsel					
UNCOMMITTED	\$33,146	\$0	\$0	\$0	
	\$33,146	\$0	\$0	\$0	0.00%
5. Contingency					
5.01 Construction Contingency					
UNCOMMITTED	\$1,135,815	\$0	\$0	\$0	



Measure S Bond Program

Financial Report for October 2021

Budget vs Actuals - By School and Budget Category with Vendor Detail

QSS Data thru 10/31/2021

	Budget	Contracted to Date	Expended to Date	Quarterly Expense Oct '21 - Dec '21	% Expended
5.02 Project Contingency	\$1,135,815	\$0	\$0	\$0	0.00%
UNCOMMITTED	\$7,442,972	\$0	\$0	\$0	
	\$7,442,972	\$0	\$0	\$0	0.00%
Total 394-9520 Villa Park HS Science Center (DSA 04-117022)	\$38,217,344	\$28,843,636	\$23,084,144	\$921,727	60.40%
394-9520 Villa Park HS Interim Housing (DSA 04-116788)					
1. Design Cost					
1.01 Architect					
UNCOMMITTED	\$0	\$0	\$0	\$0	
LPA INC	\$70,000	\$70,000	\$70,000	\$0	100.00%
	\$70,000	\$70,000	\$70,000	\$0	100.00%
2. Construction Cost					
2.01 Construction					
UNCOMMITTED	\$0	\$0	\$0	\$0	
ANGELES CONTRACTOR, INC	\$1,074,556	\$1,074,556	\$1,074,556	\$0	100.00%
	\$1,074,556	\$1,074,556	\$1,074,556	\$0	100.00%
2.02 OFCI and Other Construction					
UNCOMMITTED	\$0	\$0	\$0	\$0	
ACCO ENGINEERED SYSTEMS INC	\$36,527	\$36,527	\$36,527	\$0	100.00%
	\$36,527	\$36,527	\$36,527	\$0	100.00%
4. Construction Support Costs					
4.01 Rental					
UNCOMMITTED	\$1	\$0	\$0	\$0	
ELITE MODULAR LEASING & SALES INC	\$567,326	\$567,326	\$499,726	\$0	88.08%
	\$567,327	\$567,326	\$499,726	\$0	88.08%
4.05 DSA Review Fees					
UNCOMMITTED	\$0	\$0	\$0	\$0	
DIVISION OF STATE ARCHITECT	\$24,163	\$24,163	\$24,163	\$0	100.00%
	\$24,163	\$24,163	\$24,163	\$0	100.00%
4.07 DSA Inspection (IOR)					
UNCOMMITTED	\$0	\$0	\$0	\$0	
BPI INSPECTION SERVICE	\$43,265	\$43,265	\$43,265	\$0	100.00%
	\$43,265	\$43,265	\$43,265	\$0	100.00%
4.08 DSA Construction Phase Testing (LOR)					
UNCOMMITTED	\$0	\$0	\$0	\$0	
NINYO & MOORE	\$41,908	\$41,908	\$41,908	\$0	100.00%
	\$41,908	\$41,908	\$41,908	\$0	100.00%



Measure S Bond Program

Financial Report for October 2021

Budget vs Actuals - By School and Budget Category with Vendor Detail

QSS Data thru 10/31/2021

	Budget	Contracted to Date	Expended to Date	Quarterly Expense Oct '21 - Dec '21	% Expended
4.09 Relocation					
UNCOMMITTED	\$0	\$0	\$0	\$0	
Beltmann Group, Inc.	\$4,640	\$4,640	\$4,640	\$0	100.00%
	\$4,640	\$4,640	\$4,640	\$0	100.00%
Total 394-9520 Villa Park HS Interim Housing (DSA 04-116788)	\$1,862,385	\$1,862,385	\$1,794,785	\$0	96.37%
394-9520 Villa Park HS Parking and Drop Off (DSA 04-118521)					
1. Design Cost					
1.01 Architect					
UNCOMMITTED	\$0	\$0	\$0	\$0	
LPA INC	\$107,305	\$107,305	\$59,506	\$0	55.45%
	\$107,305	\$107,305	\$59,506	\$0	55.45%
2. Construction Cost					
2.01 Construction					
UNCOMMITTED	\$0	\$0	\$0	\$0	
ANGELES CONTRACTOR, INC	\$2,750,000	\$2,750,000	\$2,594,435	\$0	94.34%
	\$2,750,000	\$2,750,000	\$2,594,435	\$0	94.34%
2.02 OFCI and Other Construction					
UNCOMMITTED	\$0	\$0	\$0	\$0	
WW GRAINGER INC	\$1,536	\$1,536	\$1,536	\$1,536	100.00%
	\$1,536	\$1,536	\$1,536	\$1,536	100.00%
4. Construction Support Costs					
4.05 DSA Review Fees					
UNCOMMITTED	\$3,386	\$0	\$0	\$0	
DIVISION OF STATE ARCHITECT	\$37,762	\$37,762	\$37,762	\$0	100.00%
	\$41,147	\$37,762	\$37,762	\$0	91.77%
4.06 Postage, Printing & Advertising					
UNCOMMITTED	\$0	\$0	\$0	\$0	
AMERICAN REPROGRAPHICS CO LLC	\$476	\$476	\$476	\$0	100.00%
	\$476	\$476	\$476	\$0	100.00%
4.07 DSA Inspection (IOR)					
UNCOMMITTED	\$0	\$0	\$0	\$0	
BPI INSPECTION SERVICE	\$44,880	\$44,880	\$40,264	\$0	89.71%
	\$44,880	\$44,880	\$40,264	\$0	89.71%
4.08 DSA Construction Phase Testing (LOR)					
UNCOMMITTED	\$0	\$0	\$0	\$0	
NINYO & MOORE	\$83,024	\$83,024	\$75,273	\$0	90.66%
	\$83,024	\$83,024	\$75,273	\$0	90.66%



Measure S Bond Program

Financial Report for October 2021

Budget vs Actuals - By School and Budget Category with Vendor Detail

QSS Data thru 10/31/2021

	Budget	Contracted to Date	Expended to Date	Quarterly Expense Oct '21 - Dec '21	% Expended
Total 394-9520 Villa Park HS Parking and Drop Off (DSA 04-118521)	\$3,028,369	\$3,024,983	\$2,809,252	\$1,536	92.76%
394-9520 Villa Park HS Phase II (DSA 04-119694)					
1. Design Cost					
1.01 Architect					
UNCOMMITTED	\$0	\$0	\$0	\$0	
LPA INC	\$1,877,000	\$1,877,000	\$1,220,959	\$41,857	65.05%
	\$1,877,000	\$1,877,000	\$1,220,959	\$41,857	65.05%
3. Program and Construction Management					
3.01 Program Management Fees					
UNCOMMITTED	\$188,752	\$0	\$0	\$0	
CUMMING CONSTRUCTION MGMT INC	\$201,241	\$201,241	\$73,696	\$15,747	36.62%
	\$389,993	\$201,241	\$73,696	\$15,747	18.90%
3.02 Construction Management Fees					
UNCOMMITTED	\$0	\$0	\$0	\$0	
CORDOBA CORPORATION	\$506,441	\$506,441	\$65,773	\$2,193	12.99%
	\$506,441	\$506,441	\$65,773	\$2,193	12.99%
4. Construction Support Costs					
4.03 Commissioning					
UNCOMMITTED	\$0	\$0	\$0	\$0	
P2S ENGINEERING INC	\$8,429	\$8,429	\$2,310	\$0	27.41%
	\$8,429	\$8,429	\$2,310	\$0	27.41%
4.05 DSA Review Fees					
UNCOMMITTED	\$0	\$0	\$0	\$0	
DIVISION OF STATE ARCHITECT	\$188,750	\$188,750	\$188,750	\$0	100.00%
	\$188,750	\$188,750	\$188,750	\$0	100.00%
4.06 Postage, Printing & Advertising					
UNCOMMITTED	\$0	\$0	\$0	\$0	
AMERICAN REPROGRAPHICS CO LLC	\$8,000	\$8,000	\$0	\$0	0.00%
	\$8,000	\$8,000	\$0	\$0	0.00%
4.11 Preliminary Testing (Hazmat, Topo, Geo, etc)					
UNCOMMITTED	\$1,657	\$0	\$0	\$0	
ENVIRONMENTAL NETWORK CORPORATION	\$10,860	\$10,860	\$4,640	\$0	42.73%
NINYO & MOORE	\$58,576	\$58,576	\$53,223	\$0	90.86%
PSOMAS	\$26,550	\$26,550	\$26,550	\$0	100.00%
	\$97,643	\$95,986	\$84,413	\$0	86.45%
Total 394-9520 Villa Park HS Phase II (DSA 04-119694)	\$3,076,256	\$2,885,847	\$1,635,901	\$59,797	53.18%



Measure S Bond Program

Financial Report for October 2021

Budget vs Actuals - By School and Budget Category with Vendor Detail

QSS Data thru 10/31/2021

	Budget	Contracted to Date	Expended to Date	Quarterly Expense Oct '21 - Dec '21	% Expended
394-TBD Villa Park HS Science Center Unallocated Funds F22					
5. Unallocated Bond Funds					
5.04 Unallocated Bond Funds					
UNCOMMITTED	\$1,192,646	\$0	\$0	\$0	
	\$1,192,646	\$0	\$0	\$0	0.00%
Total 394-TBD Villa Park HS Science Center Unallocated Funds F22	\$1,192,646	\$0	\$0	\$0	0.00%
394-9520 Villa Park Unallocated Funds F21					
4. Construction Support Costs					
4.15 Miscellaneous Fees					
UNCOMMITTED	\$0	\$0	\$0	\$0	
OUSD COST OF INTEREST DISTRIBUTION	\$48,488	\$48,488	\$48,488	\$0	100.00%
	\$48,488	\$48,488	\$48,488	\$0	100.00%
5. Program Reserve					
5.03 Interest Earned - Reserve					
UNCOMMITTED	\$690,921	\$0	\$0	\$0	
	\$690,921	\$0	\$0	\$0	0.00%
Total 394-9520 Villa Park Unallocated Funds F21	\$739,409	\$48,488	\$48,488	\$0	6.56%
394-TBD Villa Park Unallocated Funds F22					
5. Unallocated Bond Funds					
5.04 Unallocated Bond Funds					
UNCOMMITTED	\$25,538,287	\$0	\$0	\$0	
	\$25,538,287	\$0	\$0	\$0	0.00%
Total 394-TBD Villa Park Unallocated Funds F22	\$25,538,287	\$0	\$0	\$0	0.00%
Villa Park High School	\$73,717,646	\$36,728,289	\$29,435,519	\$983,060	39.93%



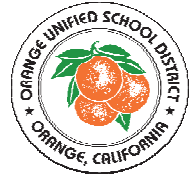
Measure S Bond Program

Financial Report for October 2021

Budget vs Actuals - By School and Budget Category with Vendor Detail

QSS Data thru 10/31/2021

	Budget	Contracted to Date	Expended to Date	Quarterly Expense Oct '21 - Dec '21	% Expended
--	--------	-----------------------	---------------------	--	---------------

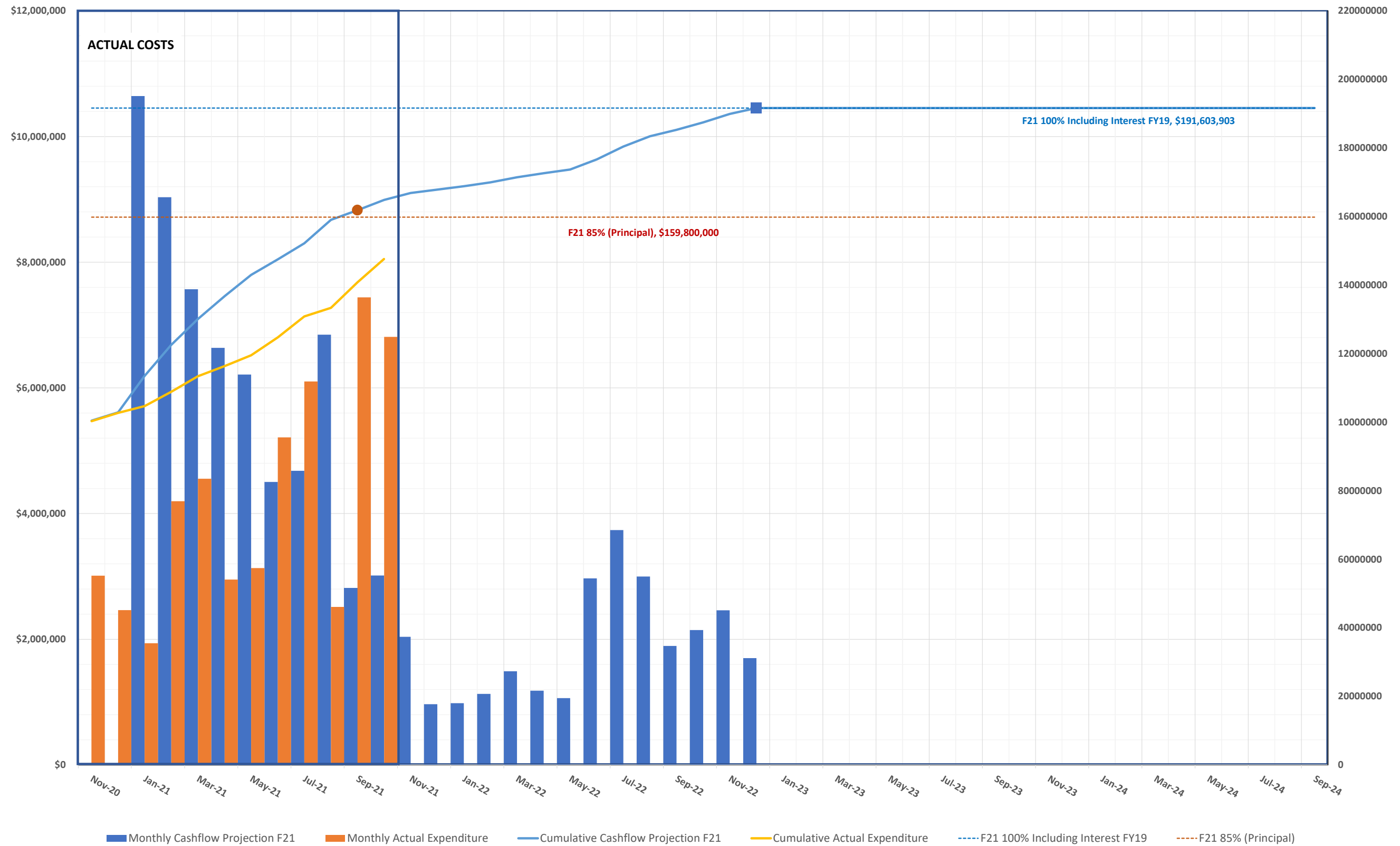


3.2 CASH FLOW PROJECTIONS

MEASURE S BOND PROGRAM - Series A 2018 CASH FLOW PROJECTION (Phase I and II)

Actual Costs thru October 30, 2021, *NOT INCLUDING ACCRUALS PENDING PAYMENT*

Fund 21 Planned Costs Projected as of December 31, 2020

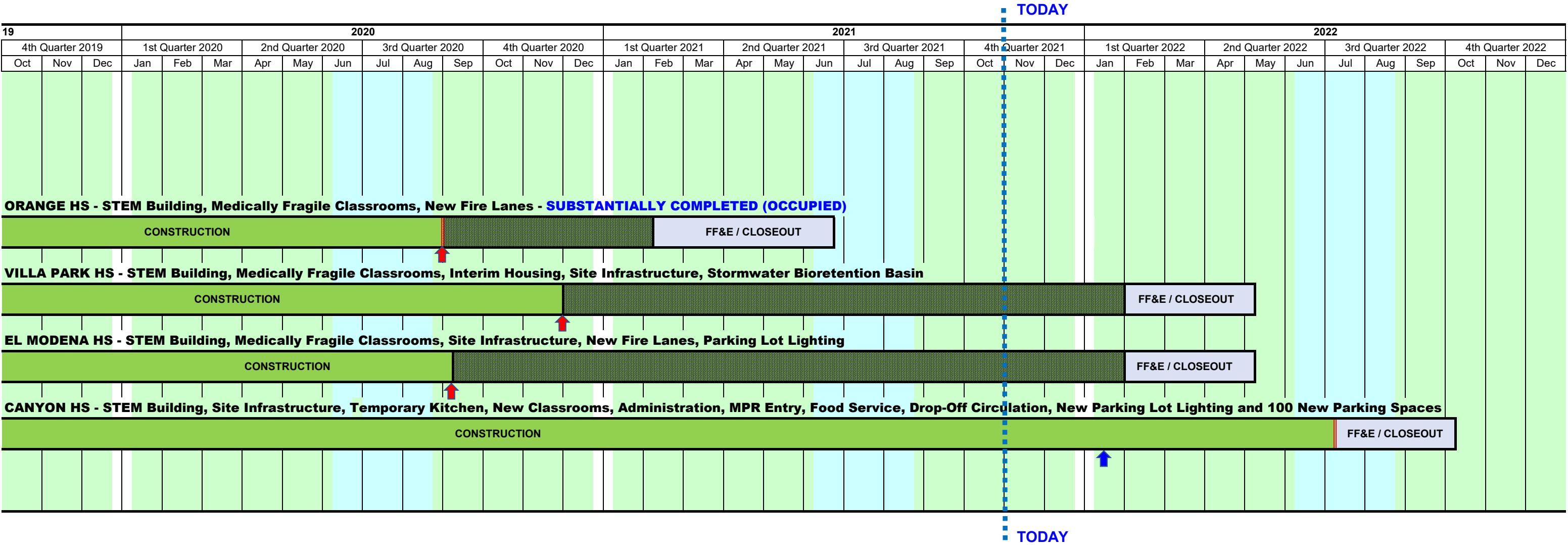


2016			2017												2018												2019									20		
4th Quarter 2016			1st Quarter 2017			2nd Quarter 2017			3rd Quarter 2017			4th Quarter 2017			1st Quarter 2018			2nd Quarter 2018			3rd Quarter 2018			4th Quarter 2018			1st Quarter 2019			2nd Quarter 2019			3rd Quarter 2019					
Oct	Nov	Dec	Jan	Feb	Mar	Apr	May	Jun	Jul	Aug	Sep	Oct	Nov	Dec	Jan	Feb	Mar	Apr	May	Jun	Jul	Aug	Sep	Oct	Nov	Dec	Jan	Feb	Mar	Apr	May	Jun	Jul	Aug	Sep			
			BOND SALE SERIES A - \$188M																																			
			ORANGE HS - Site Infrastructure, Move Relocatable Buildings, Bus Drop-Off, Restroom Renovation & Satellite Kitchen - COMPLETED																																			
			PROGRAM PHASE			DESIGN PHASE						DSA REVIEW & APPROVAL						BID & AWARD			INFRASTRUCTURE						SATELLITE KITCHEN CONSTRUCTION						FF&E/CLOSEOUT					
			ORANGE HS - STEM Building, Medically Fragile Classrooms, New Fire Lanes - SUBSTANTIALLY COMPLETED (OCCUPIED)																																			
			PROGRAM PHASE			DESIGN PHASE									DSA REVIEW & APPROVAL						BID & AWARD						CONSTRUCTION											
			VILLA PARK HS - STEM Building, Medically Fragile Classrooms, Interim Housing, Site Infrastructure, Stormwater Bioretention Basin																																			
			PROGRAM PHASE			DESIGN PHASE									DSA REVIEW & APPROVAL						BID & AWARD						CONSTRUCTION											
			EL MODENA HS - STEM Building, Medically Fragile Classrooms, Site Infrastructure, New Fire Lanes, Parking Lot Lighting																																			
			PROGRAM PHASE			DESIGN PHASE									DSA REVIEW & APPROVAL						BID & AWARD						CONSTRUCTION											
			CANYON HS - STEM Building, Site Infrastructure, Temporary Kitchen, New Classrooms, Administration, MPR Entry, Food Service, Drop-Off Circulation,																																			
PROGRAM PHASE			DESIGN PHASE															DSA REVIEW & APPROVAL						BID & AWARD														

Page 42



MEASURE S BOND PROGRAM - PHASE I: SCHEDULE SUMMARY

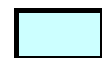


- SUMMER BREAK
- There is a date under legal negotiation (see monthly report) that may extend this substantial completion date (*the dashed section is the extension under review*).
- There has been a Substantial Completion date change approved by the Board of Education (*see under specific project for the Change Order # referenced*).
- STEM Building Substantial Completion (Scheduled)



MEASURE S BOND PROGRAM - PHASE II: SCHEDULE SUMMARY

2018							2019												2020																						
2018	3rd Quarter 2018			4th Quarter 2018			1st Quarter 2019			2nd Quarter 2019			3rd Quarter 2019			4th Quarter 2019			1st Quarter 2020			2nd Quarter 2020			3rd Quarter 2020			4th Quarter 2020													
Jun	Jul	Aug	Sep	Oct	Nov	Dec	Jan	Feb	Mar	Apr	May	Jun	Jul	Aug	Sep	Oct	Nov	Dec	Jan	Feb	Mar	Apr	May	Jun	Jul	Aug	Sep	Oct	Nov	Dec											
				ORANGE HS - Phase II: New two-story classroom/Admin bldg, Bldg 300 layout admin swing space, demo of existing Bldg 100/200.																																					
				PROGRAM PHASE			CONCEPTUAL DESIGN												DESIGN PHASE																						
				VILLA PARK HS - Phase II: New two-story, 18-classroom bldg, accessibility, and restroom upgrades to bldg 100/200, demo of bldg 500, and removal of 19 portable classrooms.																																					
				PROGRAM PHASE			CONCEPTUAL DESIGN												DESIGN PHASE																						
				EL MODENA HS - Phase II: Renovation of four (4) classroom bldgs (bldgs 200, 300, 400 and 500), library, bldg 800 (CTE), and expand Admin Bldg, new one-story classroom bldg and two bridges (2nd flr).																																					
				PROGRAM PHASE			CONCEPTUAL DESIGN												DESIGN PHASE																						
				CANYON HS - Phase II: Bldg (C) remove and replace HVAC systems, electrical systems, fire alarm, door & hardware, glazing, IT connectivity, insulate bldg, renovate restrooms, reconfigure lounge.																																					
				PROGRAM PHASE						CONCEPTUAL DESIGN						DESIGN PHASE																									
				PHASE 2 PROJECTS (as of August 2019 Monthly Report)																																					
PROGRAM PHASE						CONCEPTUAL / DESIGN PHASE												DSA REVIEW & APPROVAL																							



SUMMER BREAK

Conceptual Design Board Approved 5/9/19 for Canyon HS

Conceptual Design Board Approved 12/13/18

Phase II Design & Budget Board Approved 7/25/19

Orange HS

Orange HS

El Modena HS

El Modena HS


Villa Park HS


Villa Park HS

Canyon HS



2021												2022												2023											
1st Quarter 2021			2nd Quarter 2021			3rd Quarter 2021			4th Quarter 2021			1st Quarter 2022			2nd Quarter 2022			3rd Quarter 2022			4th Quarter 2022			1st Quarter 2023			2nd Quarter 2023			3rd Quarter 2023			4th Quarter 2023		
Jan	Feb	Mar	Apr	May	Jun	Jul	Aug	Sep	Oct	Nov	Dec	Jan	Feb	Mar	Apr	May	Jun	Jul	Aug	Sep	Oct	Nov	Dec	Jan	Feb	Mar	Apr	May	Jun	Jul	Aug	Sep	Oct	Nov	Dec
ORANGE HS - Phase II: New two-story classroom/Admin bldg, Bldg 300 layout admin swing space, demo of existing Bldg 100/200.												<div> <div>BOND SALE SERIES B - \$100M</div> <div>End of Bond Series A Funds (Projected)</div> </div>																							
												DESIGN PHASE				DSA REVIEW & APP								BID & AWARD		CONSTRUCTION									
VILLA PARK HS - Phase II: New two-story, 18-classroom bldg, accessibility, and restroom upgrades to bldg 100/200, demo of bldg 500, and removal of 19 portable classrooms.																																			
												DESIGN PHASE			DSA REVIEW & APPROVAL								BID & AWARD		CONSTRUCTION										
EL MODENA HS - Phase II: Renovation of four (4) classroom bldgs (bldgs 200, 300, 400 and 500), library, bldg 800 (CTE), and expand Admin Bldg, new one-story classroom bldg and two bridges (2nd flr).																																			
												DESIGN PHASE			DSA REVIEW & APPROVAL								BID & AWARD		CONSTRUCTION										
CANYON HS - Phase II: Bldg (C) remove and replace HVAC systems, electrical systems, fire alarm, door & hardware, glazing, IT connectivity, insulate bldg, renovate restrooms, reconfigure lounge.																																			
												DESIGN PHASE					DSA REVIEW & APPROVAL							BID & AWARD		CONSTRUCTION						FF&E / CLOSEOUT			
PHASE 2 PROJECTS (as of August 2019 Monthly Report)* (Left for reference)																																			
CONSTRUCTION (Anticipated Beyond Dec 2021)																								FF&E / CLOSEOUT											

 — **SUMMER BREAK**

 — **EXTENDED CONSTRUCTION START**
(for Phase II Bond Award)

 — **Phase II Design Document & Construction Estimate Board Approval (Completed)**

Orange HS - November 19, 2020 Board Meeting

El Modena HS - October 15, 2020 Board Meeting

Villa Park HS - August 13, 2020 Board Meeting

Canyon HS - February 11, 2021 Board Meeting

Board of Education

Kathryn A. Moffat, President
Andrea Yamasaki, Vice-President
Kris Erickson, Clerk
Rick Ledesma
John Ortega
Ana Page
Angie Schlueter-Rumsey

Gunn Marie Hansen, Ph.D.
Superintendent

David A. Rivera
**Assistant Superintendent/CBO
Business Services**

Scott Harvey
**Senior Executive Director
Administrative Services**



Facilities & Planning Department
Measure S Bond Program
726 W. Collins Avenue
Orange, CA 92867
T: (714) 628-4500