

**Beaufort County Board of Education
Beaufort, South Carolina**

**Performance Expectations - 7.5 Monitoring Report
Maintenance and Cleaning**

Date: March 9, 2017

I hereby present my monitoring report on Performance Expectations 8.5, Maintenance and Cleaning Procedures according to the schedule set by the Beaufort County Board of Education. I certify the information contained in this report is true.

Date: _____

Signed: _____

Reggie Murphy
Interim Chief Finance and
Operations Officer

Date: _____

Signed: _____

Jeffrey C. Moss, Ed.D
Superintendent

Date: _____

Accepted: _____

Patricia Felton-Montgomery
Board Chair

P.E. 7.5 Assure that facilities are clean, sanitary and safe.

Superintendent's interpretation

- Oversee the District's custodial contractor and ensure that the buildings are clean.
- Oversee the District's maintenance contractor and ensure operations are being handled in an efficient, cost effective, and safe manner.

Statement of Compliance

The District is in compliance with PE 7.5.

Evidence of Status of Compliance

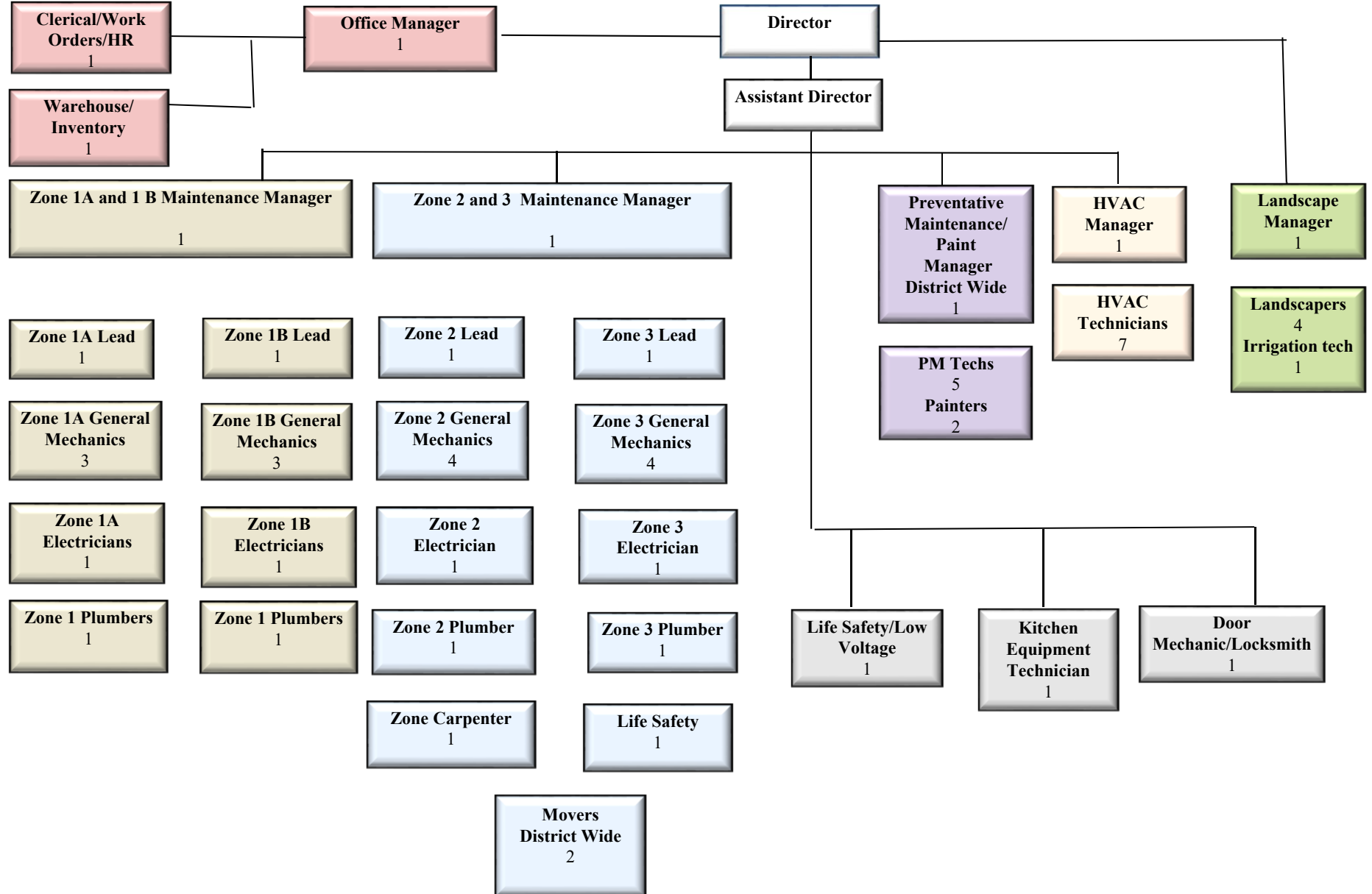
Please see the attached report on Maintenance and Cleaning.



Maintenance Report

PE 7.5
March 9, 2017

GCA Maintenance Organization Chart



Maintenance

SCHOOL NAME	# WO (PMs Included)	Self Generated WO	# WO (PMs Not Included)	Self Generated WO PCT.	Completed # WO	WO In-Process
Battery Creek High	335	107	268	0.40	329	6
Beaufort Elementary School	273	47	200	0.24	260	13
Beaufort High School	581	120	468	0.26	561	20
Beaufort-Jasper ACE	124	4	82	0.05	123	1
Beaufort Middle School	304	63	233	0.27	291	13
Bluffton Early Childhood Center	126	19	51	0.37	115	11
Bluffton Elementary School	195	46	120	0.38	178	17
Bluffton High School	354	75	256	0.29	334	20
Bluffton Middle School	247	27	176	0.15	234	13
Broad River Elementary School	362	76	285	0.27	351	11
Burroughs Avenue (HTCC)	57	4	23	0.17	56	1
Coosa Elementary School	220	36	150	0.24	210	10
D.E.S.C.	247	48	162	0.30	239	8
Daufuskie Elementary School	54	3	11	0.27	46	8
J. J. Davis Early Childhood School	165	21	102	0.21	158	7
H E McCracken Middle School	381	22	302	0.07	360	21
Hilton Head Island High School	454	113	358	0.32	438	16
Hilton Head Island Early Learning Center	234	33	159	0.21	221	13
Hilton Head Island IBE School	342	41	261	0.16	317	25

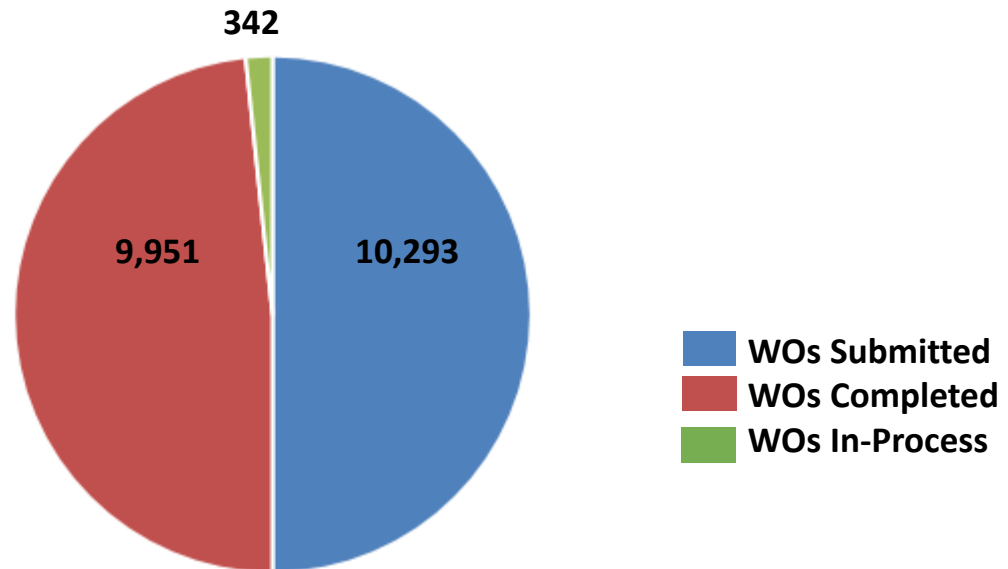
Maintenance

SCHOOL NAME	# WO (PMs Included)	Self Generated WO	# WO (PMs Not Included)	Self Generated WO PCT.	Completed # WO	WO In-Process
Hilton Head Island SCA School	326	43	240	0.18	316	10
Hilton Head Island Middle School	289	63	207	0.30	277	12
King Street (Adult Education)	55	12	31	0.39	55	0
Ladys Island Elementary School	322	26	248	0.10	313	9
Ladys Island Middle School	326	80	260	0.31	317	9
May River High School	251	47	184	0.26	248	3
Michael C. Riley ECC	130	16	76	0.21	126	4
Michael C. Riley Elementary School	234	37	182	0.20	228	6
Mossy Oaks Elementary School	147	16	92	0.17	141	6
Okatie Elementary School	248	23	182	0.13	245	3
Pink House (LIMS)	38	0	18	0.00	38	0
Port Royal Elementary School	169	49	107	0.46	166	3
Pritchardville Elementary School	173	18	105	0.17	170	3
Red Cedar Elementary School	253	42	193	0.22	250	3
Island Academy (Right Choice)	66	12	66	0.18	66	0
River Ridge Academy	306	45	250	0.18	305	1
Riverview Charter School	259	40	194	0.21	250	9
Robert Smalls International Academy	346	52	285	0.18	340	6
J. S. Shanklin Elementary School	246	40	191	0.21	238	8

Maintenance

SCHOOL NAME	# WO (PMs Included)	Self Generated WO	# WO (PMs Not Included)	Self Generated WO PCT.	Completed # WO	WO In-Process
St. Helena Early Learning Center	105	17	46	0.37	103	2
St. Helena Elementary School	193	37	143	0.26	191	2
Whale Branch Early College High School	260	45	193	0.23	258	2
Whale Branch Elementary School	212	40	157	0.25	211	1
Whale Branch Middle School	284	60	225	0.27	278	6
TOTALS	10,293	1,765	7,560		9,951	342

Data Period
8/26/16 – 2/3/17



Hilton Head High School Water Line Repair



March 9, 2017

Bottle Filler Installation



WBECHS slope stabilization



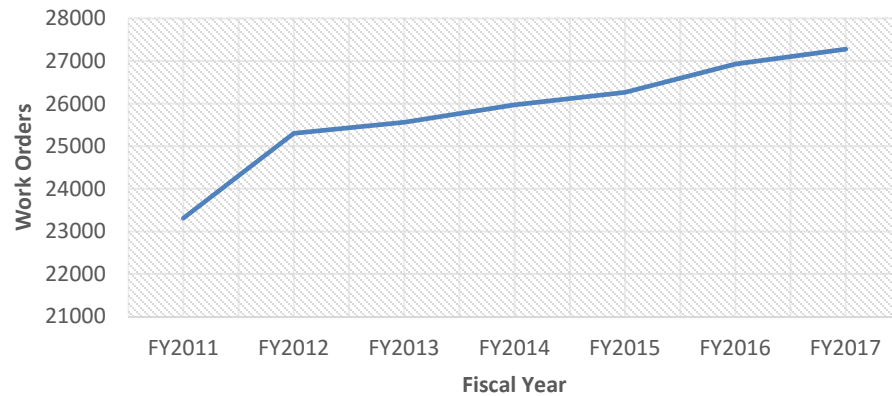
Before



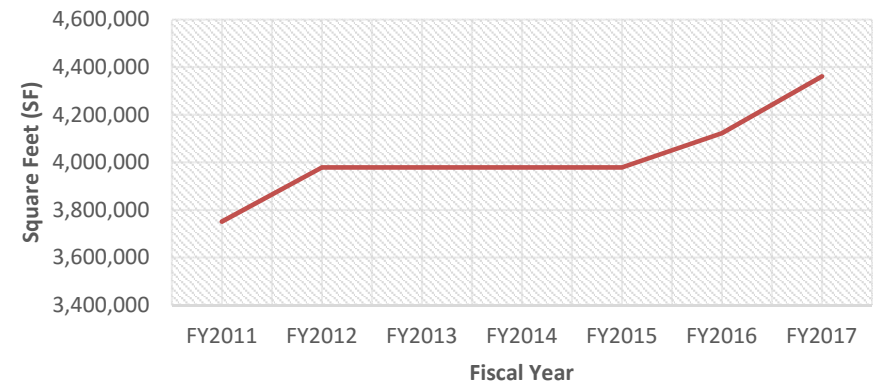
After

Maintenance

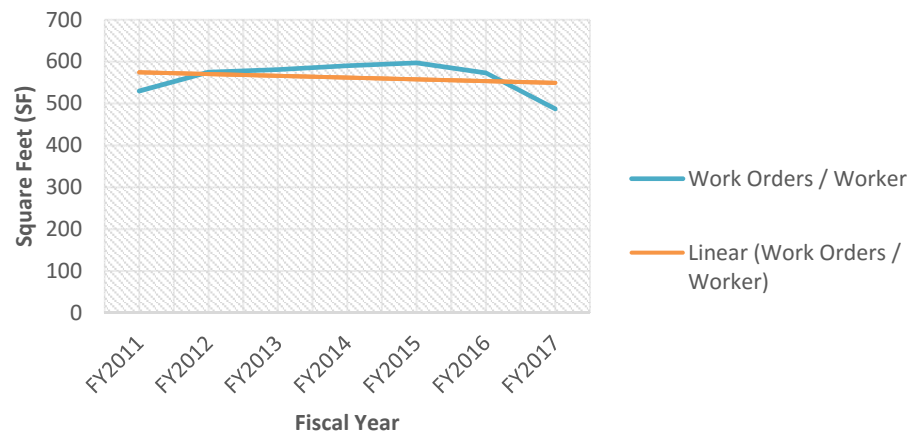
Total Work Orders per Year



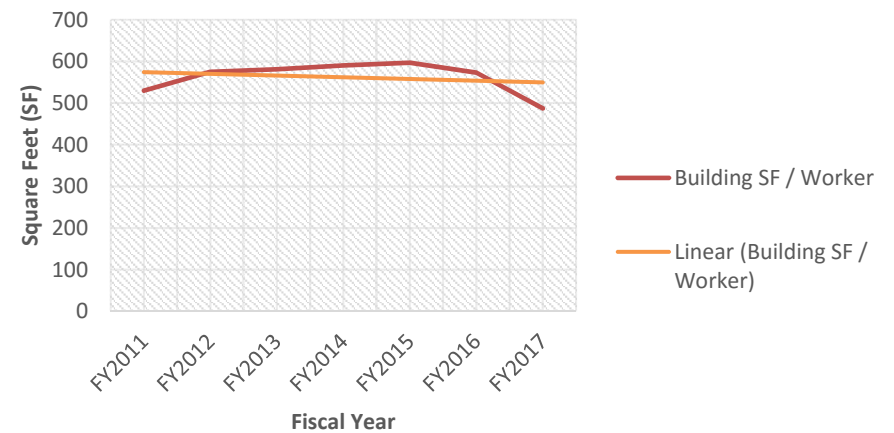
Total of SF per Year



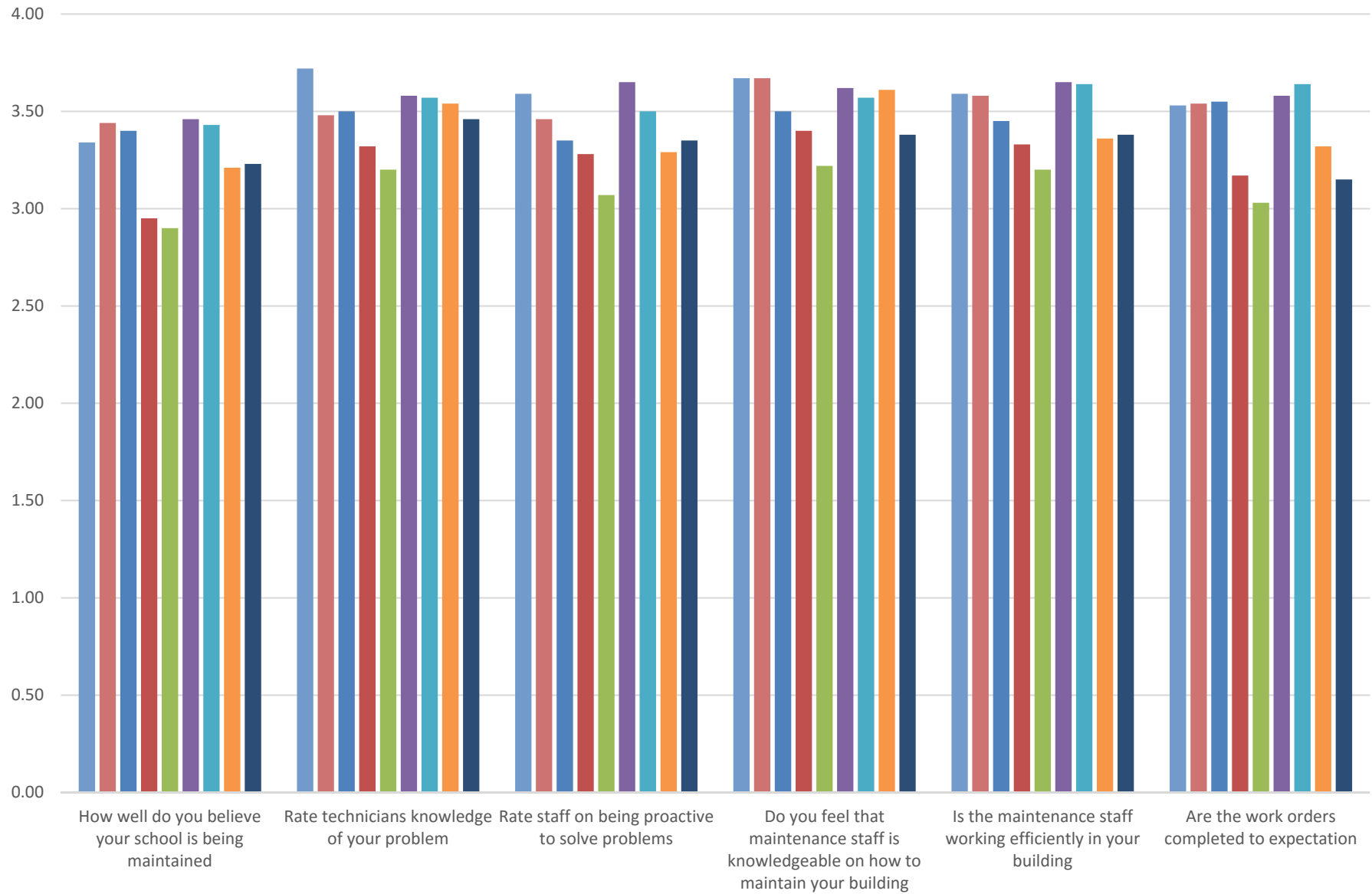
Total Work Orders per Worker per Year



Total SF per Worker per Year

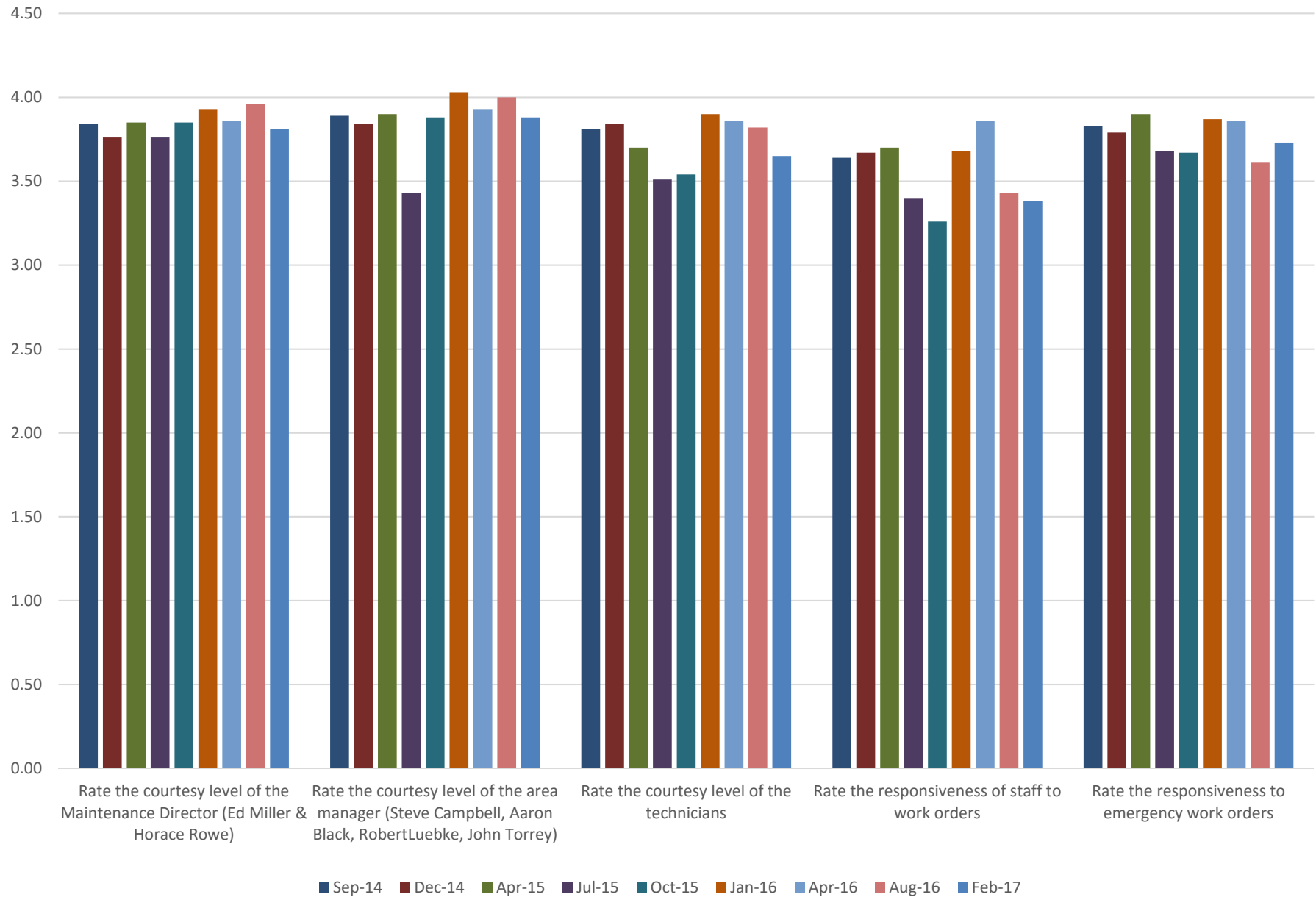


Maintenance - Quality of Service



March 9, 2017

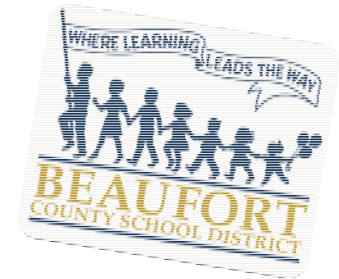
Maintenance - Customer Service/Responsiveness



March 9, 2017

Semi- Annual Maintenance and Cleaning Report

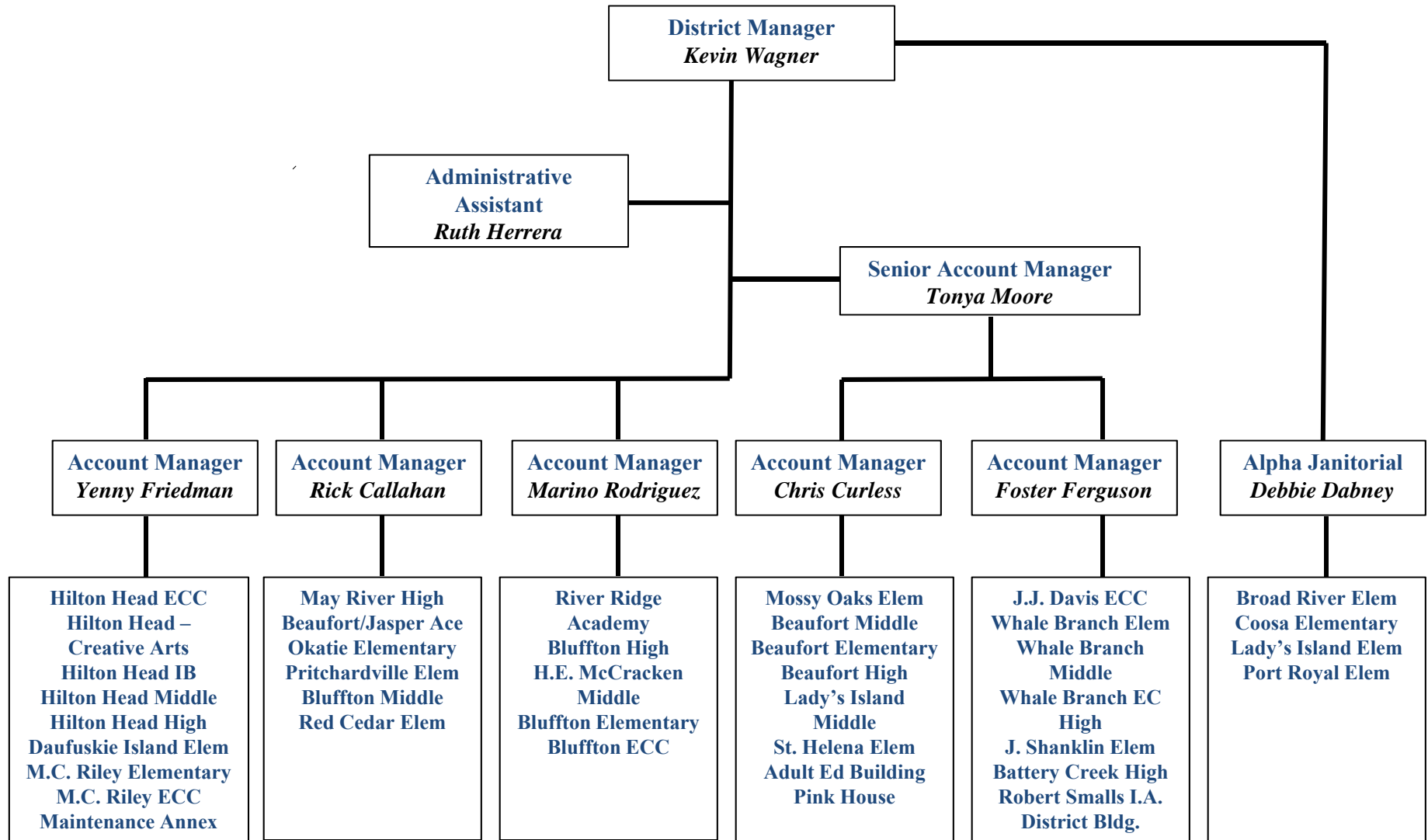
Questions?



Custodial Report

PE 7.5

Custodial Organizational Chart



Middle School Hallways-Winter Break



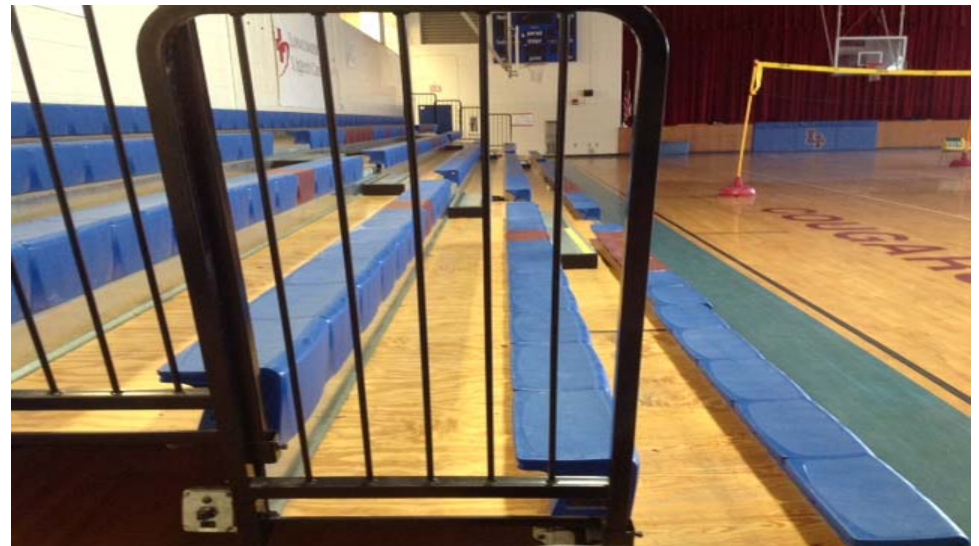
Cafeterias



Media centers



Gymnasiums



Classrooms



Front offices



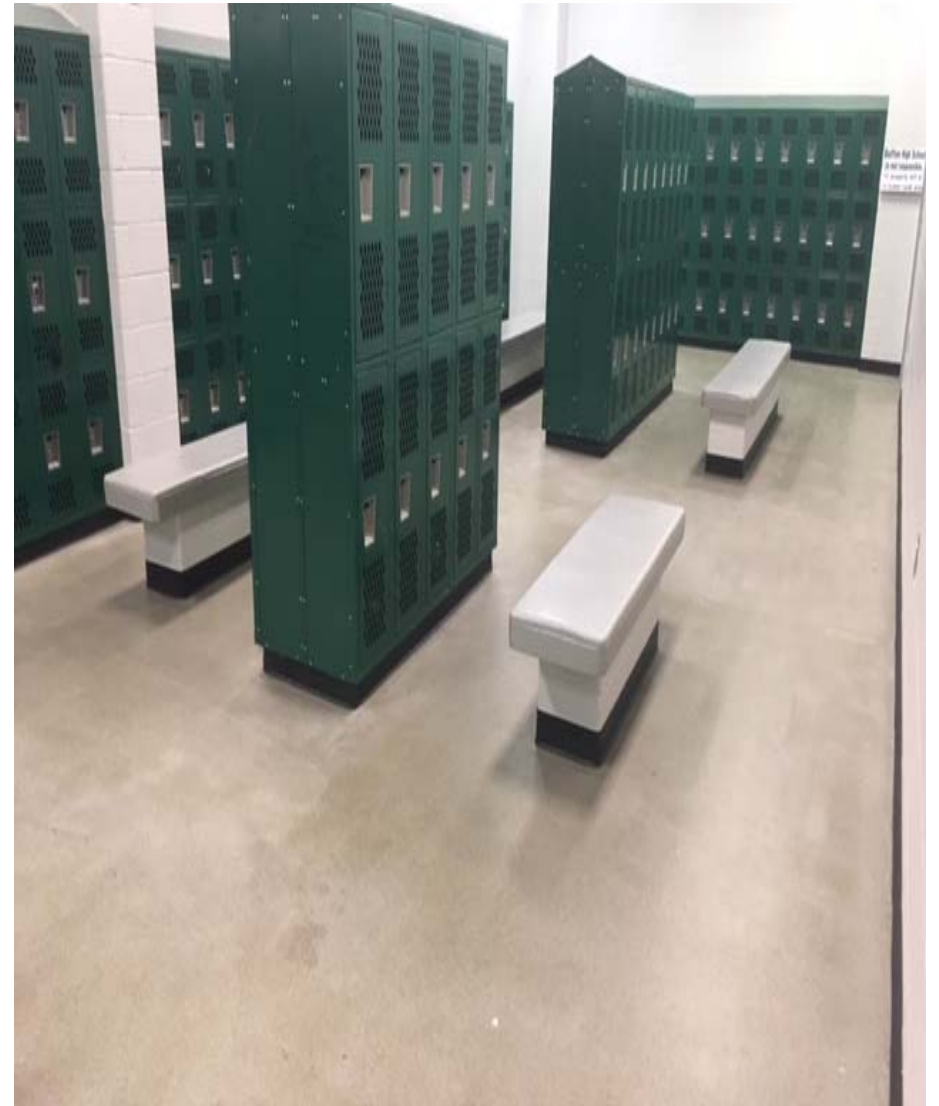
Front entrances



Weight room



Locker rooms



Group Restrooms



TOTAL FACILITIES MANAGEMENT

Custodial TFM Monthly inspections

- September 160 inspections created 51 work orders
- October 120 inspections created 60 work orders
- November 265 inspections created 115 work orders
- December 92 inspections created 10 work orders
- January 466 inspections created 344 work orders
- February 334 inspections created 248 work orders

Task Based Team Cleaning

Task-based cleaning is an organizational technique that allows custodians to specialize in specific tasks; each specialist is part of a larger team that is collectively responsible for cleaning a designated section of a school according to a defined schedule

Benefits of Task Based Cleaning

QUALITY is improved when custodians can master and consistently perform a limited set of tasks across a larger area

QUALITY is improved by the addition of a Team Lead who is responsible who for ensuring that the scope of work is complete

PRODUCTIVITY increases when custodians don't have to switch back and forth between tasks multiple times in a shift

PRODUCTIVITY can be better monitored by Managers & Supervisors who can more closely follow the progress of teams in the building

Task Based Team Cleaning

- Greater supervision and accountability through team
- Specialization yields better performance
- Investment in best tools and equipment
- Facilitates more meaningful inspections and quality feedback
- Better management of the custodial process by GCA means the client will spend less time on it
- All in all, an even higher level of quality
- Task-based cleaning does not affect day-porters

Questions?

