

# LADY'S ISLAND CORRIDOR PLAN

January 27, 2017





**Study Limit at  
Woods Memorial  
Bridge**

**Study Limit at  
Miller Drive**

**Study Limit at  
Rue Du Bois**

**Study Limit at  
Chowan Creek  
Bridge**



## FIRST PUBLIC MEETING

- September 29, 2016
- Introduced Project
- Explained Steps Involved
- Identified Goals
- Listened to Public and Collected Input

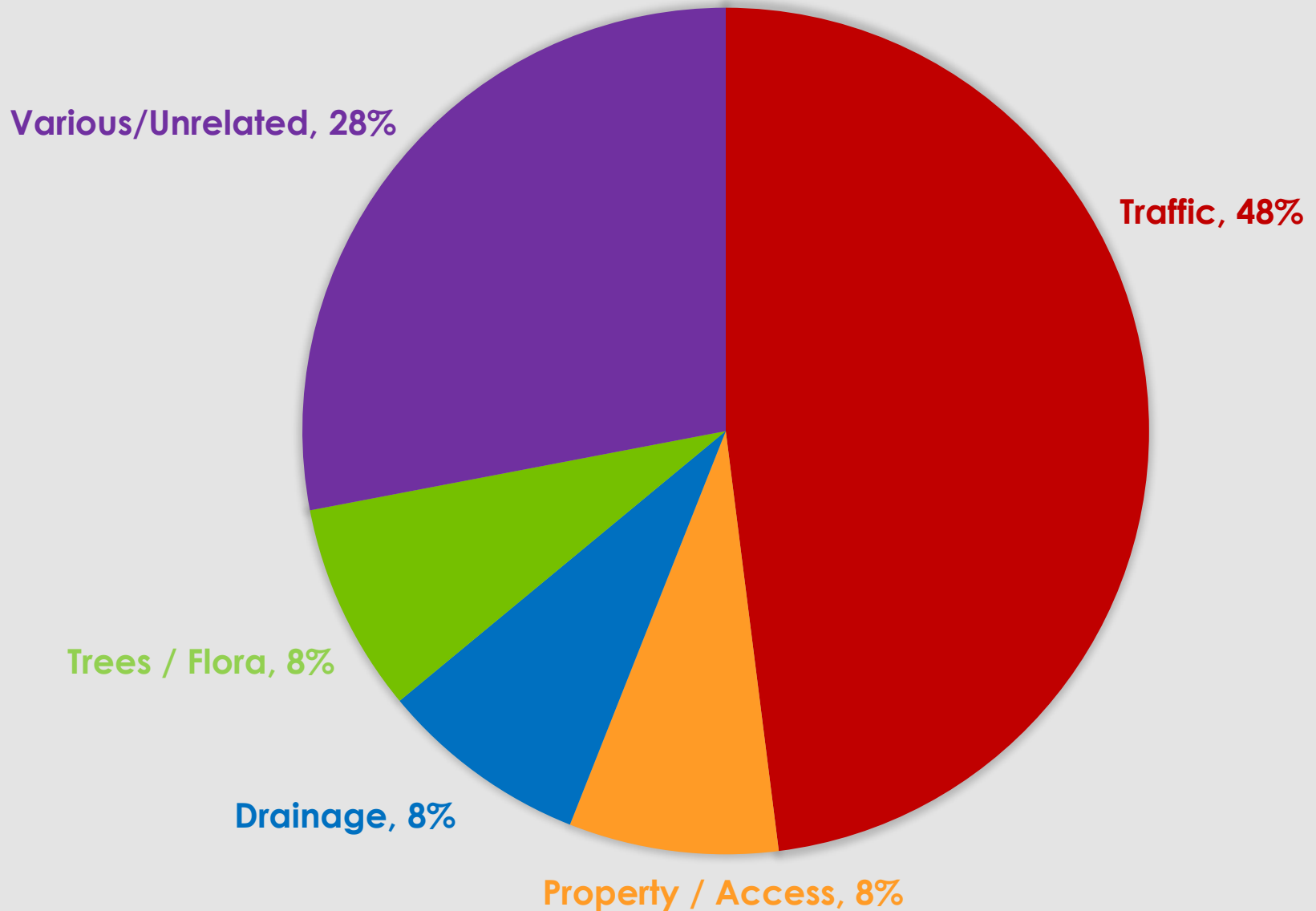




## ORIGINAL GOALS

- Minimize Congestion and Delay
- Improve Safety
- Accommodate Bicycles and Pedestrians
- Encourage a Sense of Place

# PUBLIC RESPONSES





# FUTURE TRAFFIC VOLUME CONSIDERATIONS

- Developments
  - Walmart
  - Taco Bell
  - Harris Teeter
  - Village at Oyster Bluff
  - Whitehall Plantation
  - Marina Village
  - Crystal Lake
  - Tidal Wave Car Wash
  - Waffle House
- Background Growth



# AFTERNOON PEAK QUEUES





# TRAFFIC CONGESTION

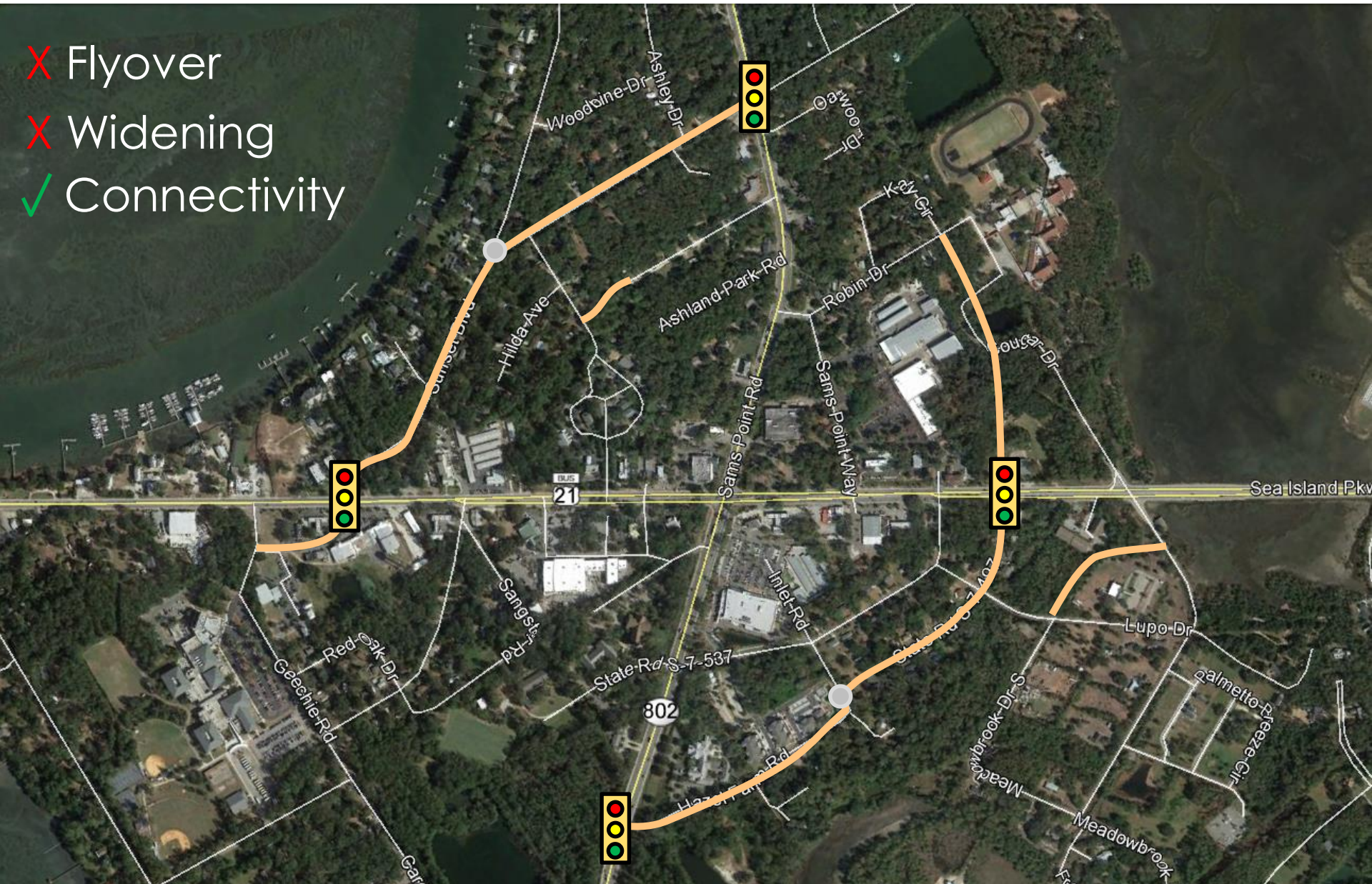
- The major public concern today, and we can expect it to grow over time.
- How can we make it better?





# CONNECTIVITY

- ✗ Flyover
- ✗ Widening
- ✓ Connectivity

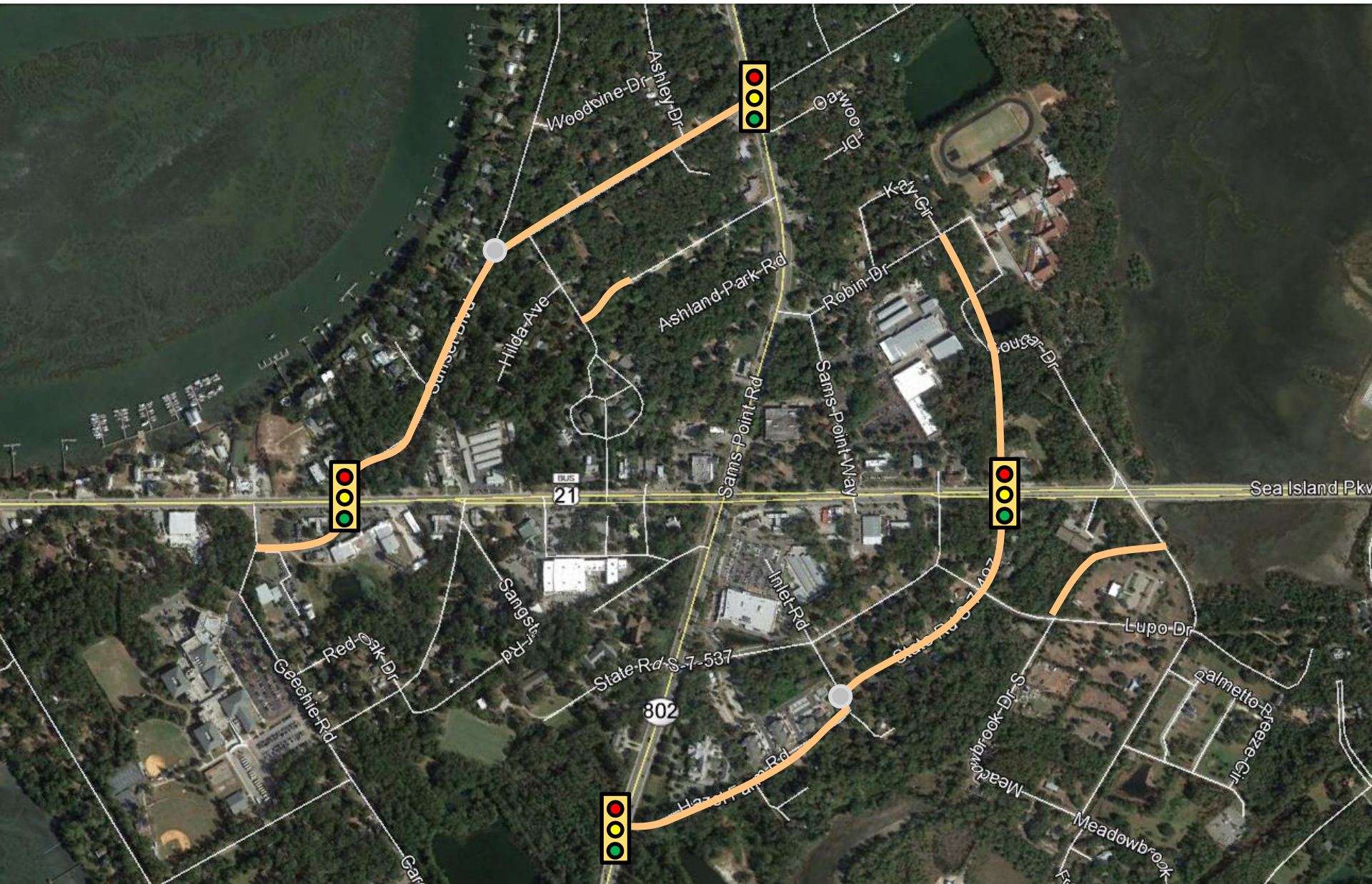




# AFTERNOON PEAK QUEUES

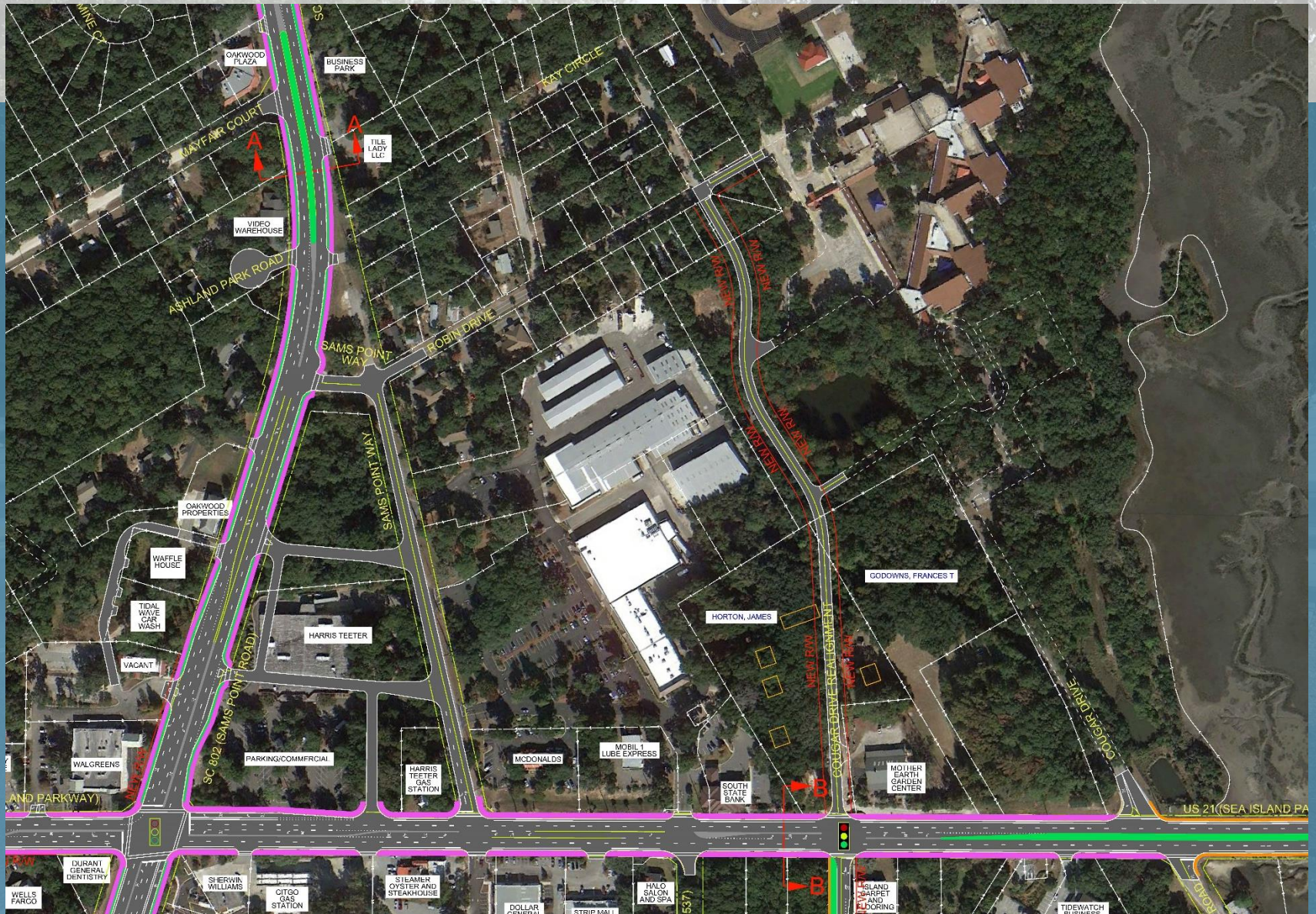




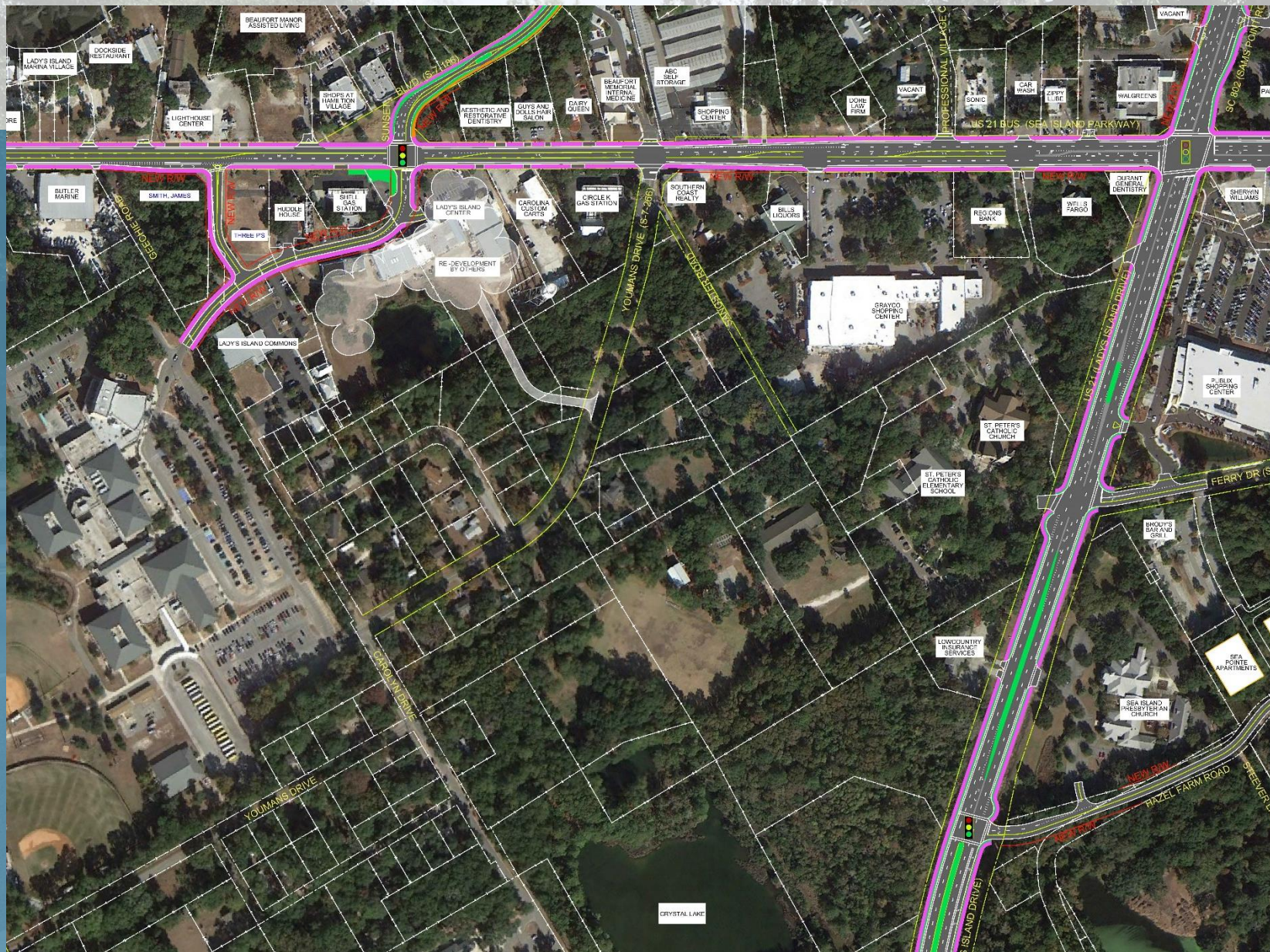
[illegible]



# COUGAR DRIVE REALIGNMENT









# IMPROVEMENTS

- Improved connectivity for vehicles, bicycles and pedestrians
- Alternate routes for congested main intersection
- Traffic calming for alternate routes
- Three new traffic signals + one relocated signal
- Traffic signal coordination
- Beaufort High School driveway relocation
- Middle School driveway relocation



# FEBRUARY 16 PUBLIC MEETING

- Complete study recommendations to be presented on Thursday, February 16 at 6:00 PM at Lady's Island Middle School
- Please join us next Thursday!

