

Beaufort County Board of Education
Beaufort, South Carolina

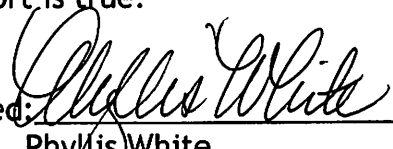
Performance Expectations Monitoring Report

Date: September 8, 2016

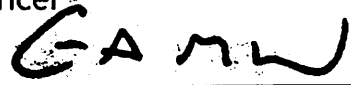
Performance Expectation (PE) being monitored: 8.5

We hereby present my monitoring report on Performance Expectations 8.5 according to the schedule set by the Beaufort County Board of Education. We certify the information contained in this report is true.

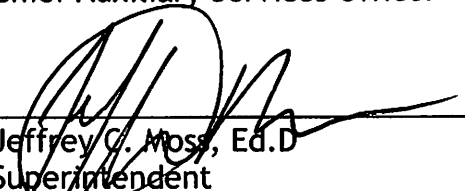
Date: 9/7/2016

Signed: 
Phyllis White
Chief Finance and Operations
Officer

Date: 9/7/16

Signed: 
Gregory McCord, Ed.D
Chief Auxiliary Services Officer

Date: 9-8-16

Signed: 
Jeffrey C. Moss, Ed.D
Superintendent

Date: _____

Signed: _____
Mary Cordray, Board Chair

The Superintendent will:

8.5 Assure that facilities are clean, sanitary and safe.

Superintendent's Interpretation

- Oversee the District's custodial contractor performance.
- Conduct regular custodial inspections and surveys of District facilities.
- Maintain the District's facilities utilizing a preventative maintenance program.
- Conduct regular maintenance inspections and surveys of District facilities.

Statement of Compliance

The District is in compliance with PE 8.5. Please see attached presentations.

WMAJ

Presented by:
Dr. Gregory A. McCord

Presented to:
BOE Finance & Operations Committee

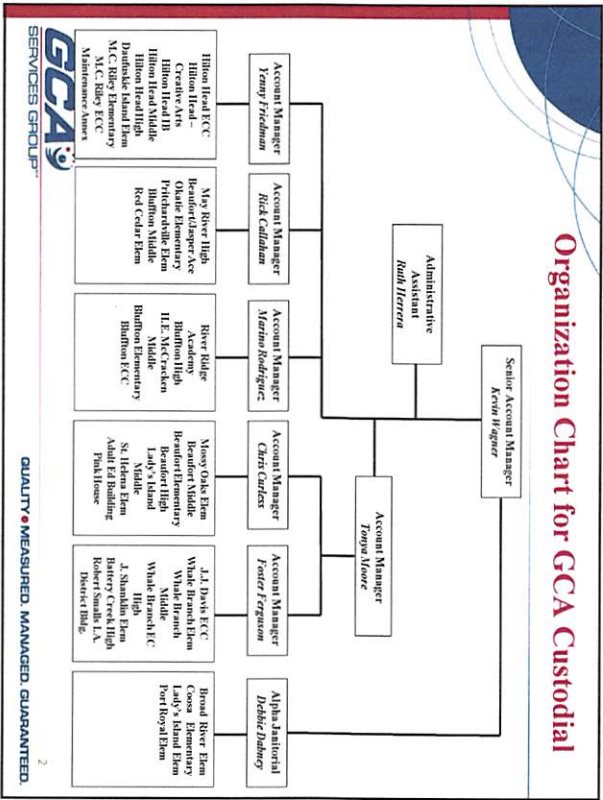
September 8, 2016

Custodial Report

PE 8.5

BEAUFORT
COUNTY SCHOOL DISTRICT

GCA
SERVICES GROUP





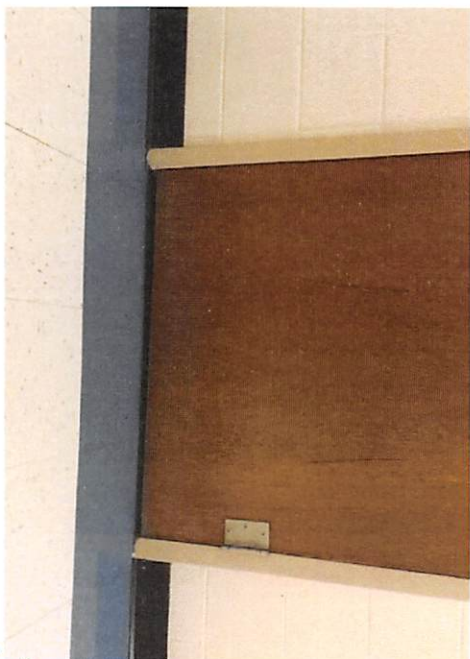
Safety Assurance and Operational Training

	Week of	Week of
Operational Topics	JANUARY 2016	JANUARY 2016
— Restroom Cleaning	1	1
— Office Cleaning	4	2
— Classroom Cleaning	11	4
— Entrance Cleaning	18	11
— Urinal Cleaning	25	18
— Laddersafety	FEBRUARY 2016	FEBRUARY 2016
— Toilet Cleaning	1	1
— HAN Disinfecting	8	8
— MSRSA Disinfecting	15	15
HR Safety Topics		
— Sensitivity/Diversity	22	22
— Hazard Communication	MARCH 2016	MARCH 2016
— Blood Bone Awareness	1	1
— Abscess Awareness	8	8
— Reporting Injuries	15	15
— Back/Lifting Safety	22	22
— Workplace Violence Prevention	APRIL 2016	APRIL 2016
— Work Rules Review	5	5
— Handbooks/Policies	12	12
— MSDS Training	19	19
	26	26
	MAY 2016	MAY 2016
	3	3
	10	10
	17	17
	24	24
	JUNE 2016	JUNE 2016
	1	1
	8	8
	15	15
	22	22
	JULY 2016	JULY 2016
	5	5
	12	12
	19	19
	26	26
	AUGUST 2016	AUGUST 2016
	2	2
	9	9
	16	16
	23	23
	SEPTEMBER 2016	SEPTEMBER 2016
	6	6
	13	13
	20	20
	27	27
	OCTOBER 2016	OCTOBER 2016
	4	4
	11	11
	18	18
	25	25
	NOVEMBER 2016	NOVEMBER 2016
	1	1
	8	8
	15	15
	22	22
	DECEMBER 2016	DECEMBER 2016
	5	5
	12	12
	19	19
	26	26

QUALITY • MEASURED. MANAGED. GUARANTEED



BES



QUALITY • MEASURED. MANAGED. GUARANTEED.



BES



QUALITY • MEASURED. MANAGED. GUARANTEED.







QUALITY **C** MEASURED. MANAGED. GUARANTEED.



BMS CERAMIC TILE



QUALITY **C** MEASURED. MANAGED. GUARANTEED.



BMS CERAMIC TILE



QUALITY • MEASURED, MANAGED, GUARANTEED.



BMS CERAMIC TILE



QUALITY • MEASURED, MANAGED, GUARANTEED.



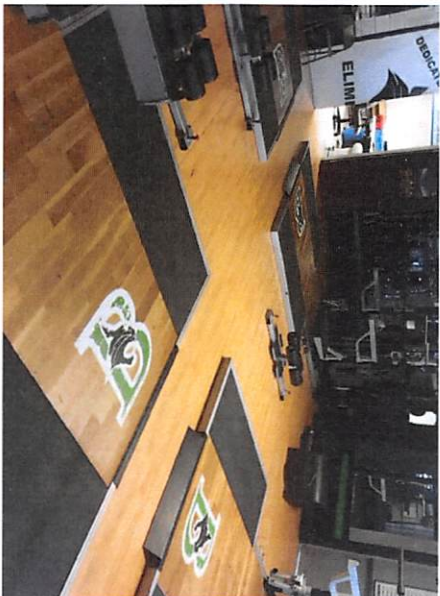
VARSTY FOOTBALL LOCKER ROOM



QUALITY • MEASURED, MANAGED, GUARANTEED.



BLHS WEIGHT ROOM



QUALITY • MEASURED, MANAGED, GUARANTEED.



VASITY FOOTBALL BATHROOMS



QUALITY • MEASURED, MANAGED, GUARANTEED.



BLHS LOCKER ROOM



QUALITY • MEASURED, MANAGED, GUARANTEED.



Discussion Points



Discussion points

- ◆ Summer clean
- ◆ Summer institute
- ◆ BCSD Middle Schools
- ◆ Bluffton High School
- ◆ May River High School
- ◆ Acknowledgements



Michael C. Riley Elementary and ECC

Dear Dr. McCord, Kevin Wagner, and Scott Peterman,

I would like to commend Yenny Friedman and her crew for their excellent diligence and exemplary cleaning during the summer of 2016 and the opening of our school this year. Yenny put together a crew that worked tirelessly, had high standards and completed all elements of cleaning to a high level of care!!! So often I communicate when we have a need or concern, this time it is a great pleasure to support excellence!

Adrienne D. Sutton
Principal

QUALITY • MEASURED. MANAGED. GUARANTEED.



Hilton Head School of the Creative Arts

Dear Dr. McCord, Kevin Wagner, and Scott Peterman

I realized when I started writing my weekly bulletin to staff that I could not let the first week pass without telling all of you how much I appreciate and enjoy working with Yenny Friedman. Under the direction of GCA Supervisor, Yenny Friedman both schools that I supervise opened Monday in better condition that I have seen in my 18 years with the district. The depth and scope of the cleaning was excellent this summer. The buildings were cleaned top to bottom in all areas including closets that are sometimes missed from year to year.

Gretchen Keefner, Principal
Hilton Head Island Elementary School for the Creative Arts and Daufuskie Island Elementary School

QUALITY • MEASURED. MANAGED. GUARANTEED.



Hilton Head Early Childhood Center

Dear Dr. McCord, Kevin Wagner and Scott Peteman,

I would like to let you know how much I appreciate Yenny Friedman and her crew. Under her direction the crew this summer took special care to work with our teachers as they set up classrooms and made our building spotless for the start of a new school year. Yenny is always proactive and each school year we are happy to have her oversee the cleaning of our building. The summer crew that worked with her also deserve recognition for all of their hard work.

Thank you,
Kim Bratt
HHECC Principal

QUALITY • MEASURED. MANAGED. GUARANTEED.



Future Initiatives/Goals



go Day Future Initiatives/Goals

- ◆ Making sure that school grounds are free of debris on a daily basis
- ◆ Maintaining a safe work environment for school staff and students
- ◆ Overseeing and maintaining clean sports facilities

QUALITY • MEASURED. MANAGED. GUARANTEED.

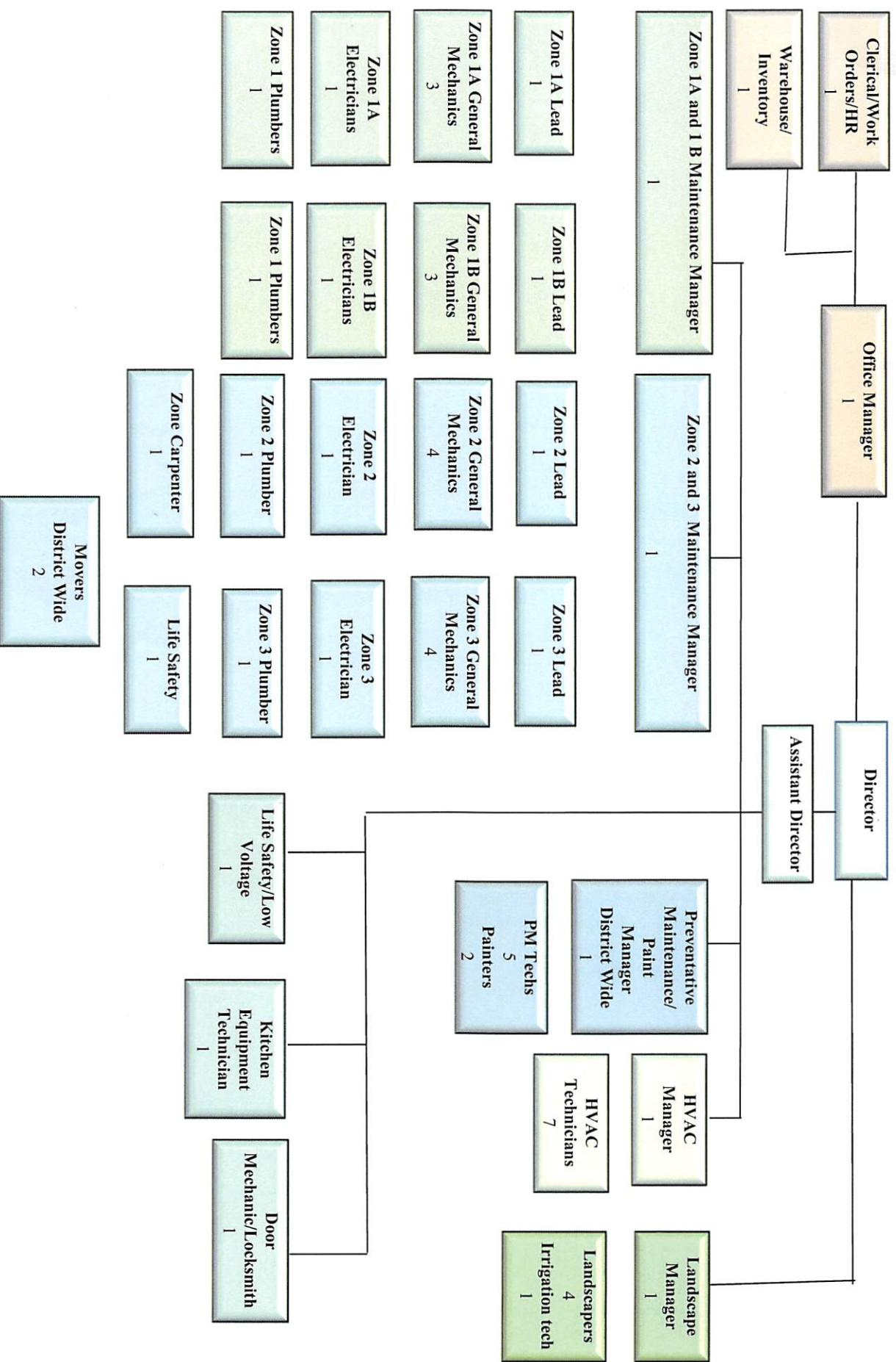




Maintenance & Custodial Report

PE 8.5
September 8, 2016

GCA Maintenance Organization Chart



Maintenance

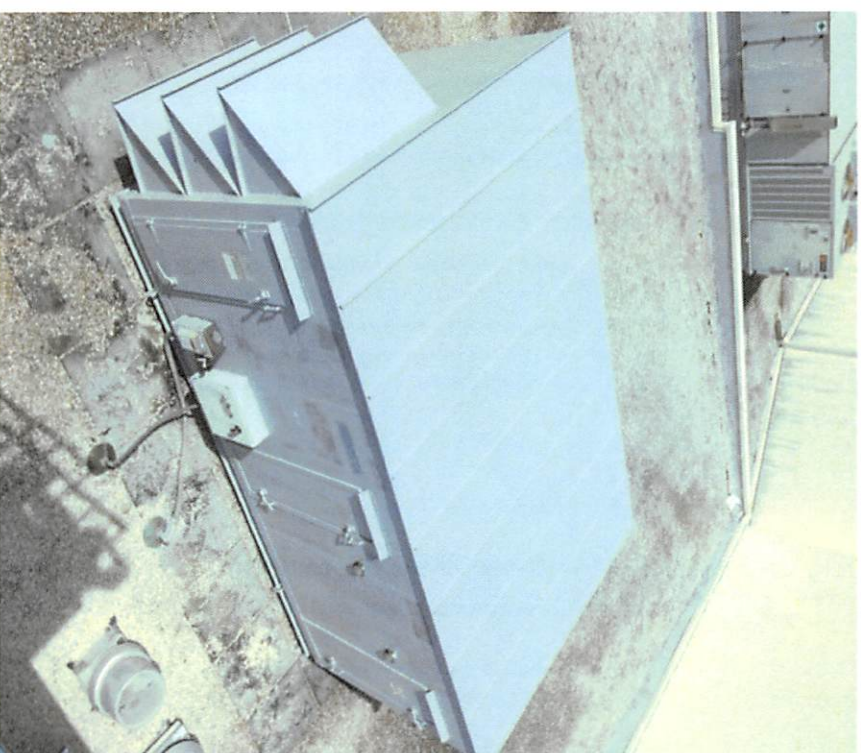
Accomplishments

- Class of 2016 graduation
- Prepared for 2016-2017 School Year
 - Painted Island Academy
 - Moves...moves....and more moves
 - Welded auditorium seats at BLHS
 - Assisted in HHHS culinary arts equipment install
 - BES floor tile replacement
 - LIES - removed old timber pole field lighting
 - PRES – Responded to tree fall on roof
 - Assisted Technical Services in UPS wiring at various locations
 - Moved LIMS office personnel temporarily to BHS during summer fire alarm work
 - BCHS hot water to dressing room, eliminating problem hot water heater location
 - WBECHS repaired leak at field house
 - Assisted with MRHS deliveries
- Completed District-wide hot water heater inventory
- Oversee fire damper inspection and replacement

BLHS Roof Top Unit Rehab



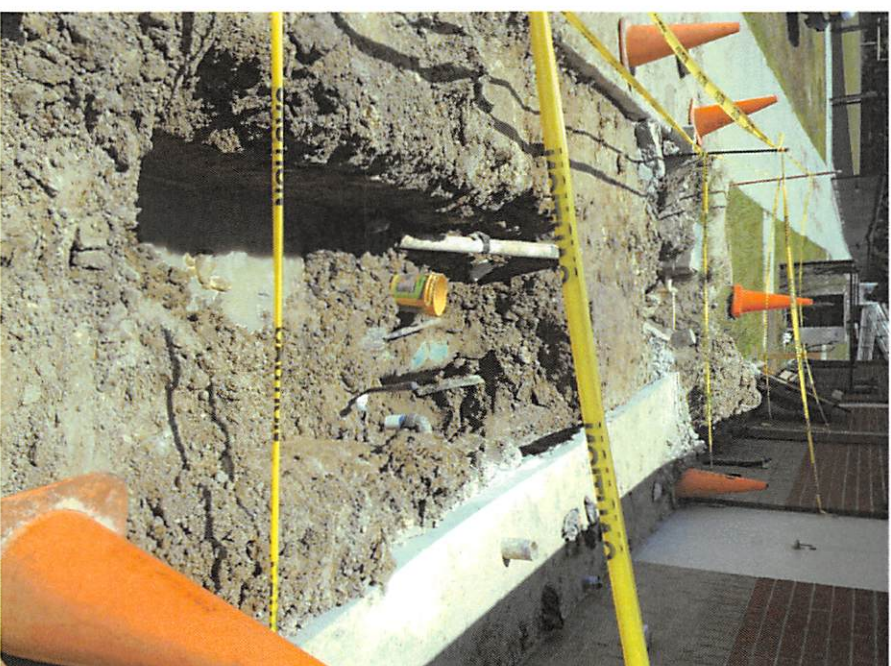
Before



After

September 8, 2016

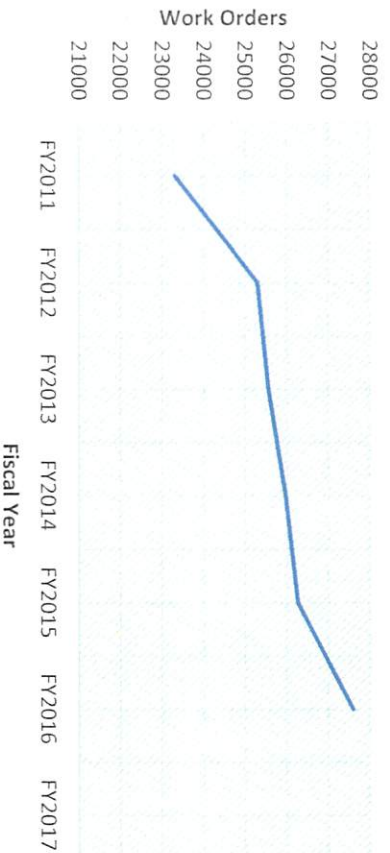
WBECHS Water Line Repair



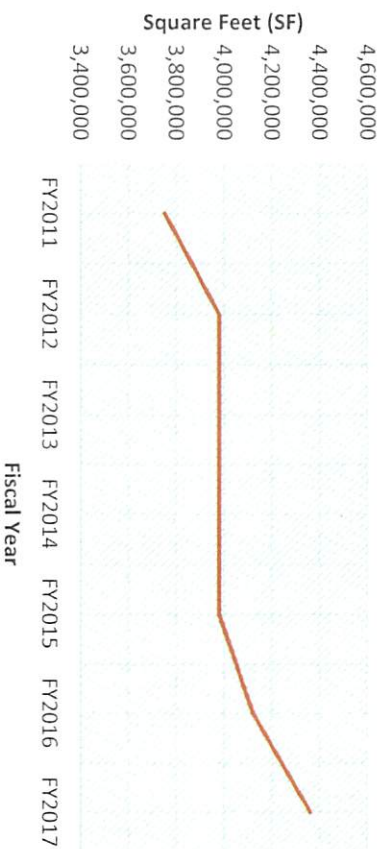
September 8, 2016

Maintenance

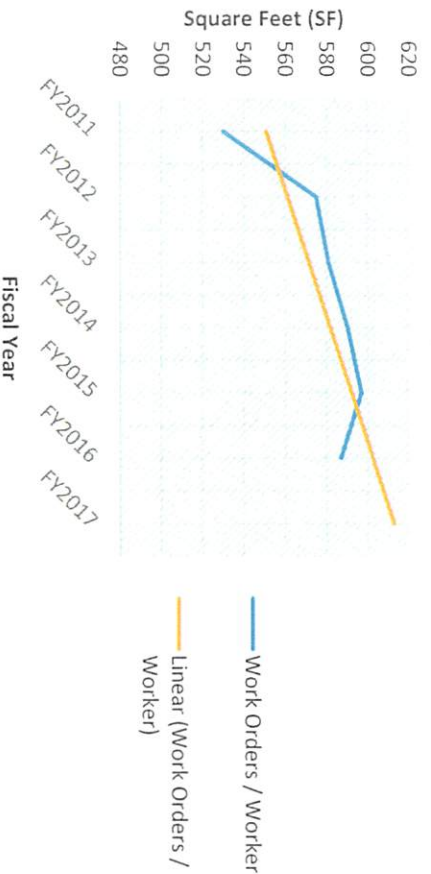
Total Work Orders per Year



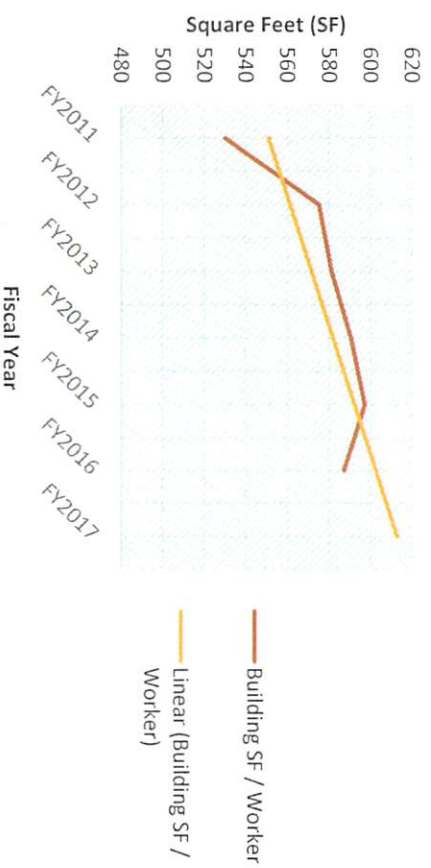
Total of SF per Year



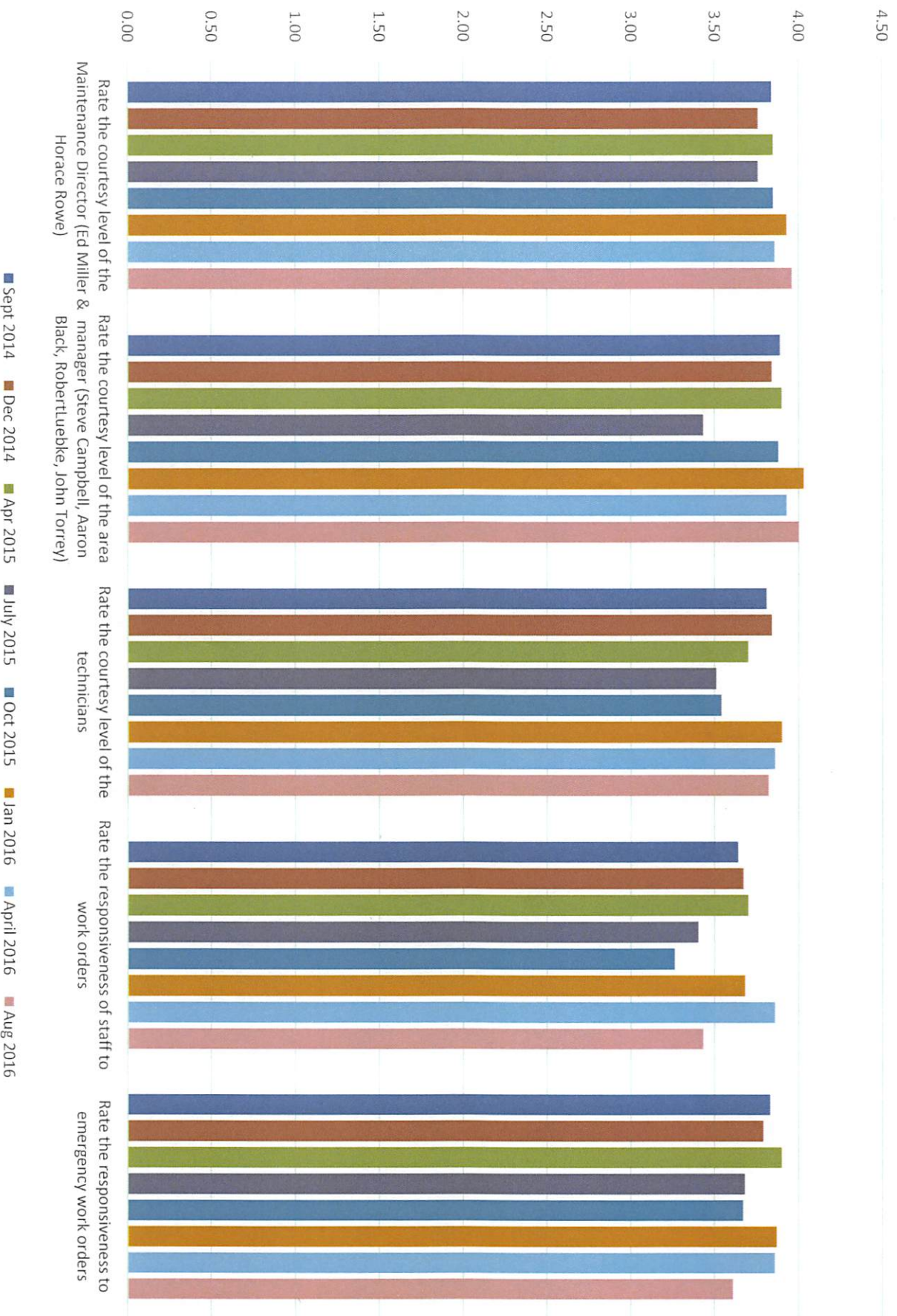
Total Work Orders per Worker per Year



Total SF per Worker per Year

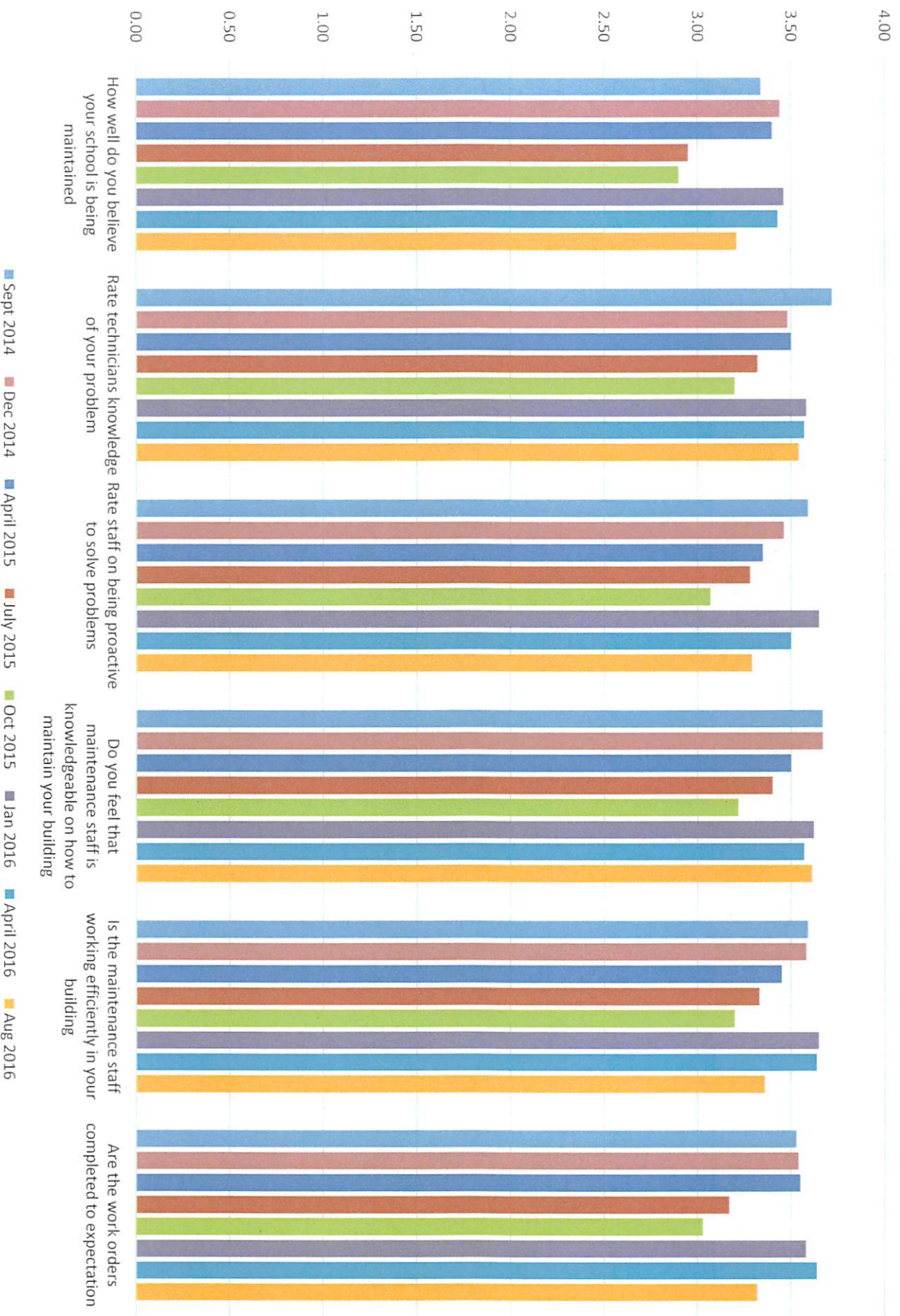


Maintenance - Customer Service/Responsiveness



September 8. 2016

Maintenance - Quality of Service



September 9, 2016

Semi- Annual Maintenance and Cleaning Report

Questions?

