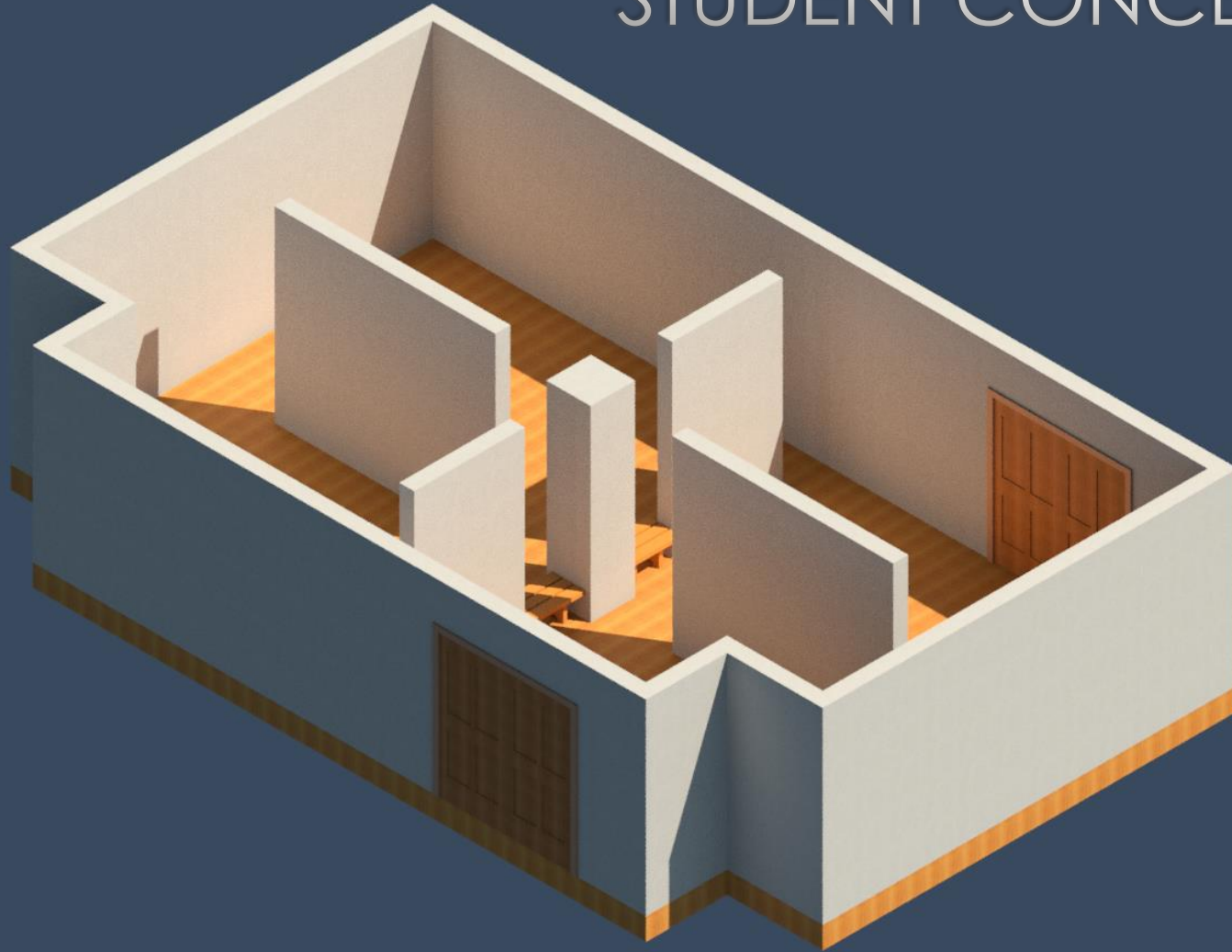


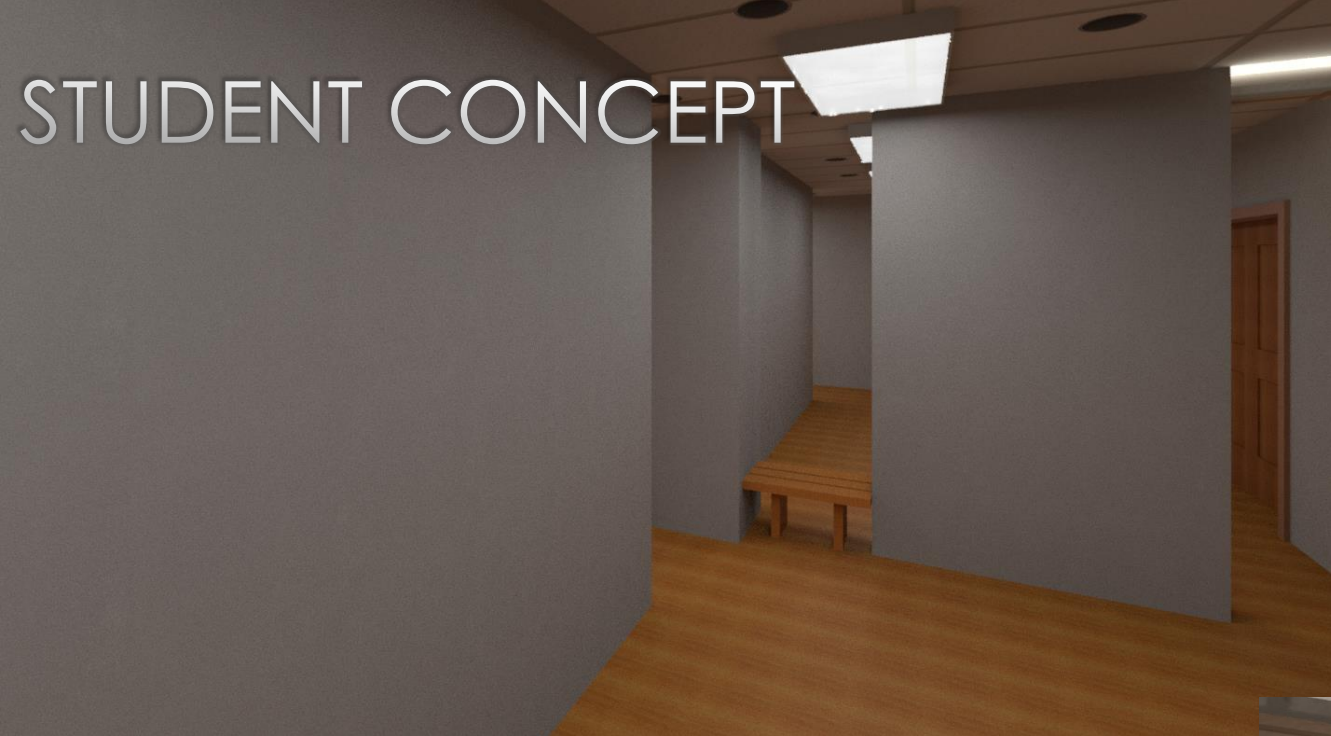
LADY'S ISLAND MIDDLE SCHOOL ART STUDIO

- STUDENT DESIGNED PROJECT
- FACILITIES PLANNING AND CONSTRUCTION STAFF PARTICIPATED IN DESIGN REVIEW
- BOARD APPROVED SUPPORT ON JUNE 16, 2015 AND DEDICATED \$10,000 FOR THIS PROJECT.
- DESIGN ASSISTANCE AND CONSTRUCTED BY MAINTENANCE.
- COST = \$8,926

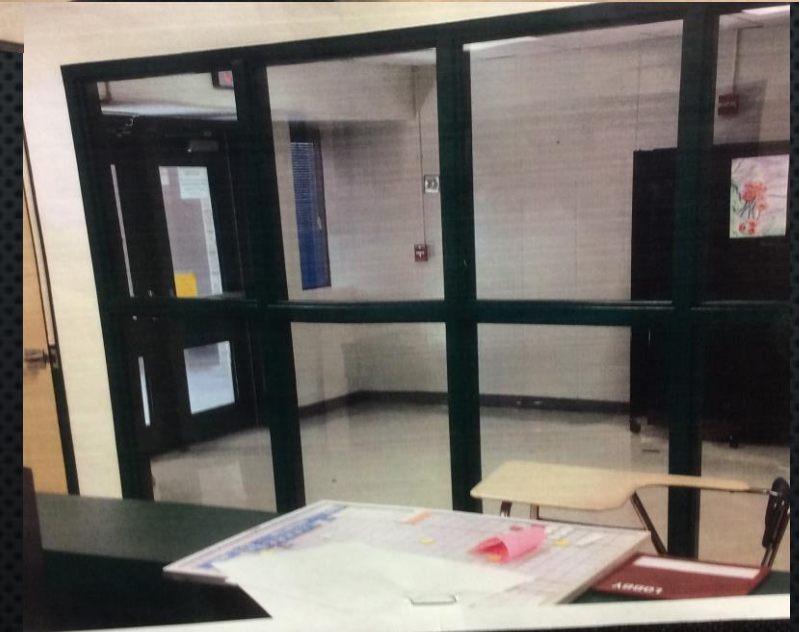
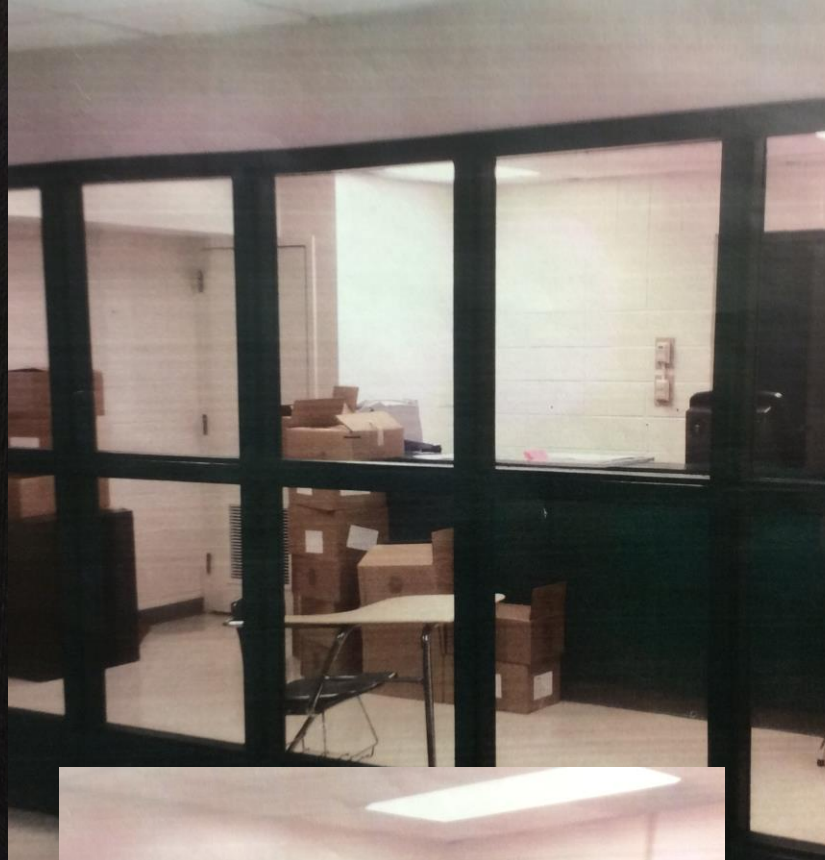
STUDENT CONCEPT



STUDENT CONCEPT



BEGINNING



MIDDLE



MIDDLE



FINISHED



COMPARISON

