

# 01. INTRODUCTION

Kineton High School is currently underpinned by an ethos of ‘Respect, Equality, Collaboration and Support’. The school is passionate about delivering a rigorous, rich curriculum with an expectation that every child will do their best.

Kineton High School has been selected as one of the first 50 schools in England to receive funding under the Government’s School Rebuilding Programme (SRP). The SRP will undertake major rebuilding and refurbishment projects, with investment targeted at school and sixth form college buildings in the worst condition across England.

The existing buildings, whilst utilised successfully to date, provide various challenges in terms of movement and the safe and efficient provision of the curriculum. These proposals embrace and promote Kineton’s core values whilst providing a much needed replacement set of buildings and improvement to the surrounding campus.

The primary objective of the plans is to replace the existing secondary school buildings, part of the Stowe Valley Academy Trust, with a modern, efficient main school building and campus that will provide an ideal overall learning environment.

The new buildings are designed to inspire and raise aspiration for all pupils and as such will be accessible to everyone. The new school will house a set of spaces and facilities which are also available for use by the community, including a drama hall and sports hall that will be accessible outside of school operating hours. The more recently constructed science block will remain in situ.

The proposals require redevelopment of the site whilst the existing school remains operational for the duration of construction. Therefore protecting the continuation of vital educational services and provision of community facilities has been a top priority. Once the project is complete, some existing buildings will be removed to make way for the integration of new play spaces, landscaping, improved traffic circulation and parking provisions.



## SITE PHOTOGRAPHS



School Entrance



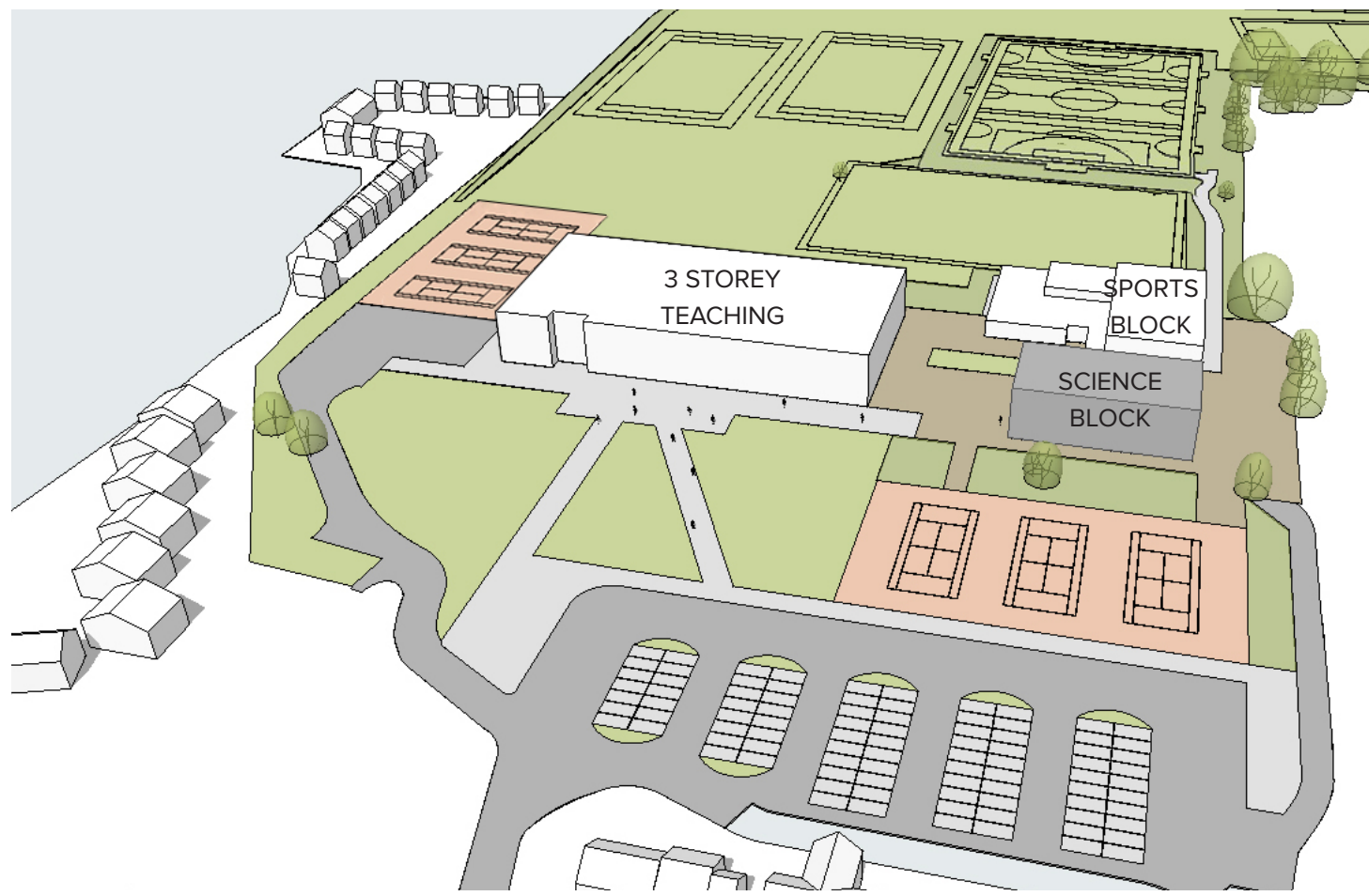
Science Block



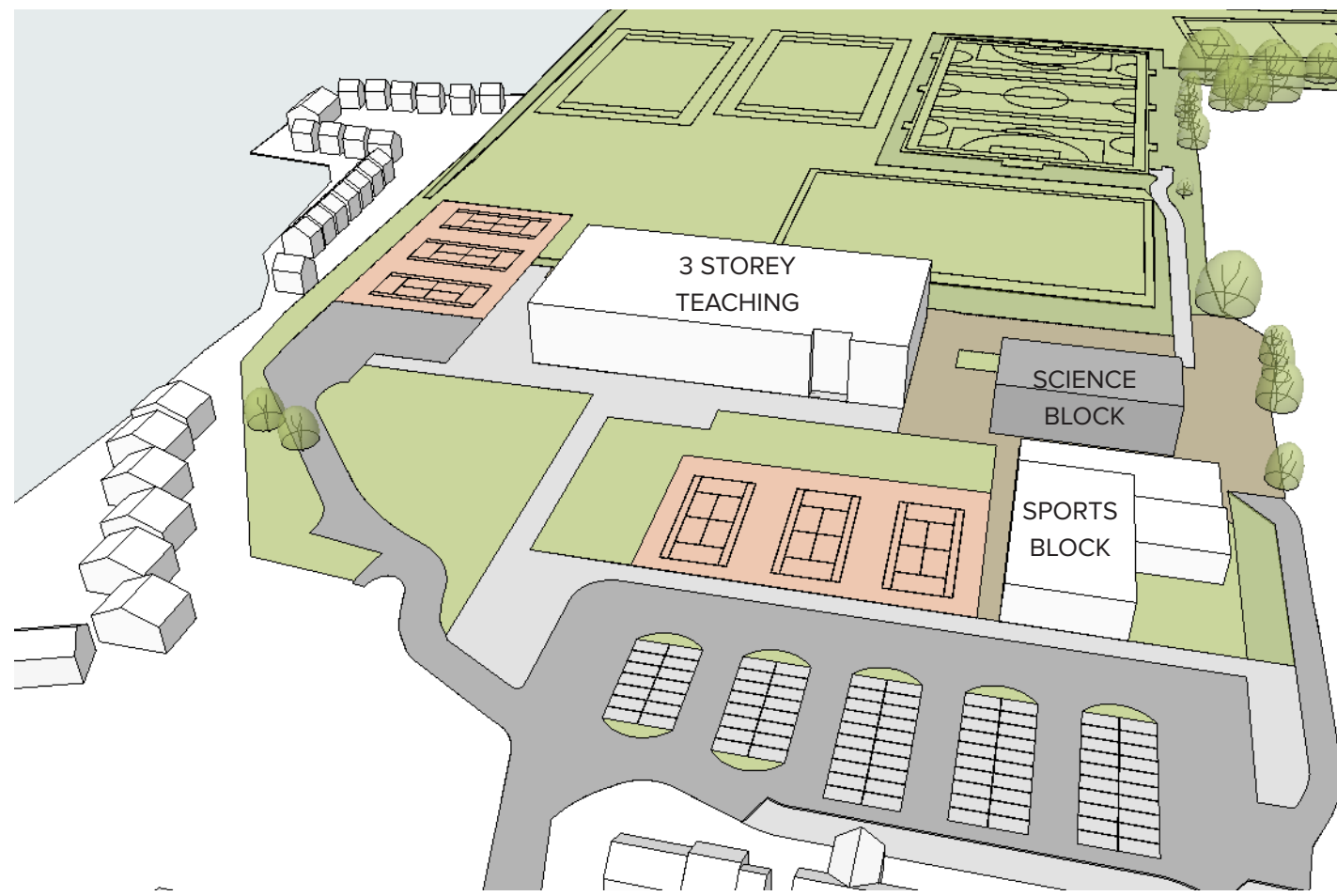
Existing Gym



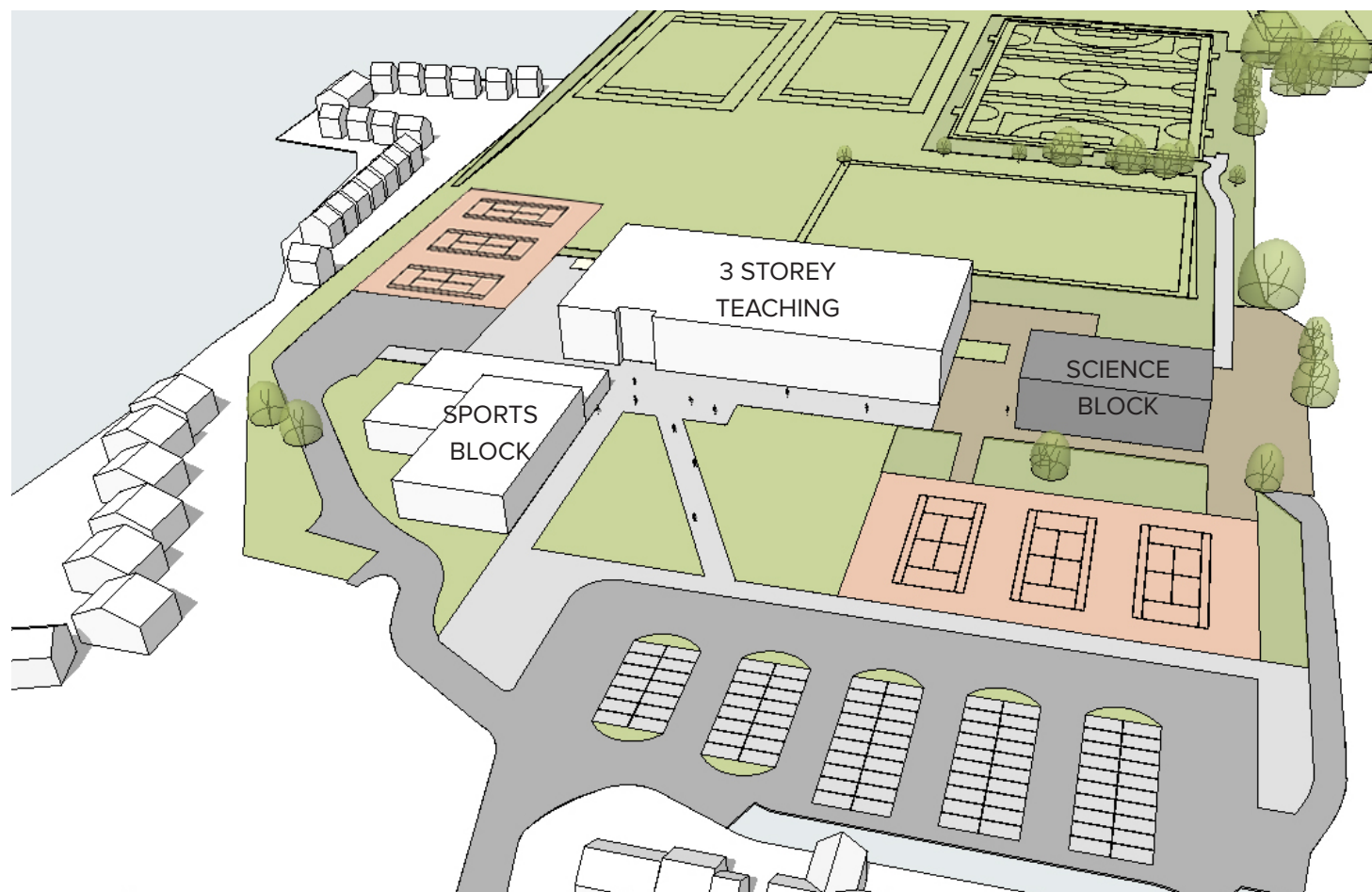
# 02. THE CAMPUS



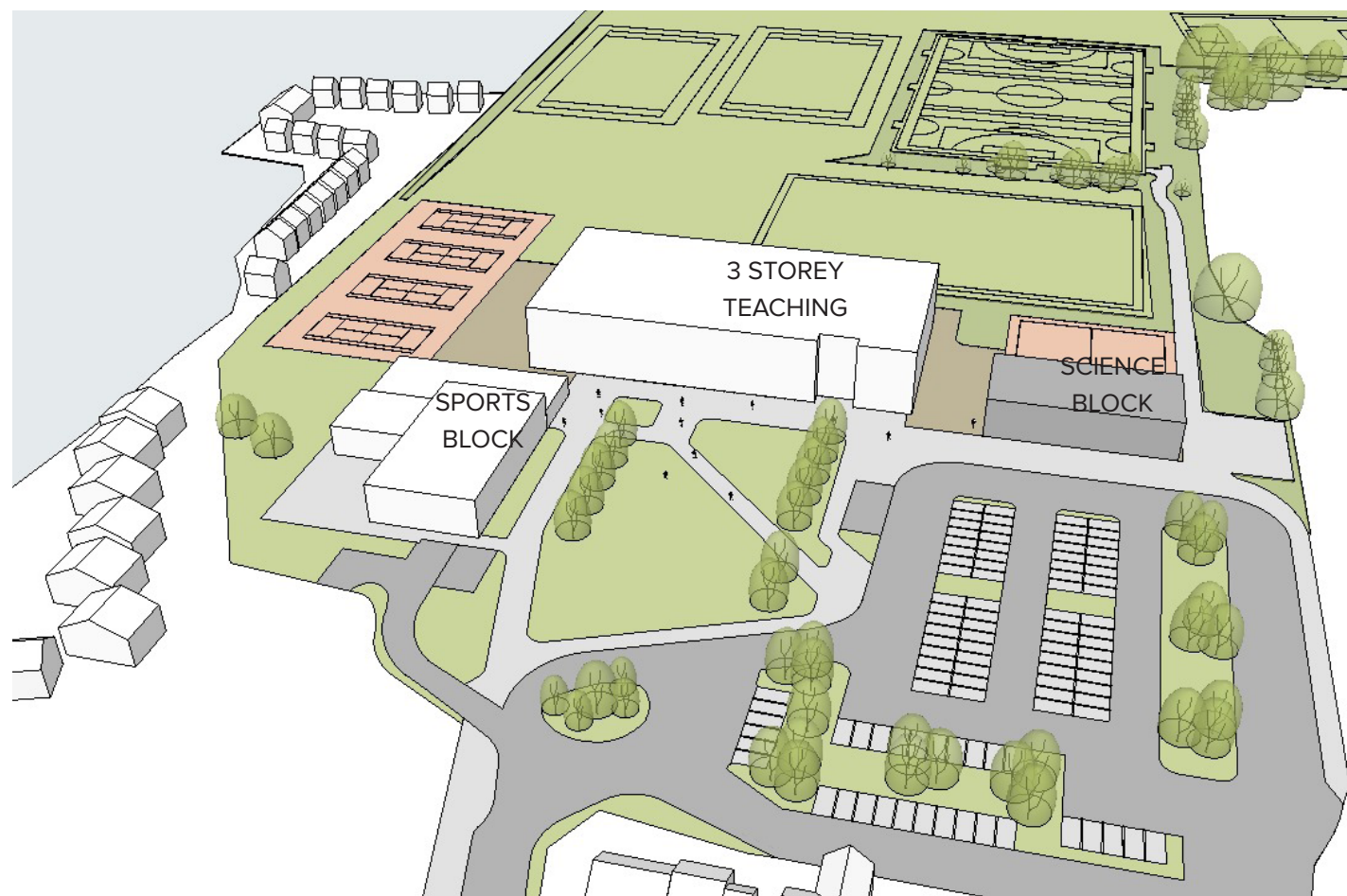
Option 1 - Sports block to the rear East  
Control option - previous contractor's proposal



Option 2 - Sports block to the front East  
Sports Block on existing school footprint



Option 3 - Sports block to the front West



Option 4 - Sports block to the front West with developed landscape

The design of the new school has been subject to extensive stakeholder engagement with involvement from the school, Department for Education, Stratford-on-Avon District Council planning officers, Sport England and local ward and parish councillors.

Early options appraisal tested the viability of several locations for the new teaching and sports blocks.

Option 4 for the location of the sports block, to the front West of the teaching block, was ultimately preferred because it provides several benefits for the school, community and the build phase.

Option 4 brings the sports facilities to the public side of the school site, celebrating Kineton's sporting credentials and allowing easy and clear access for the community.

This campus layout also allows for the creation of a welcoming front plaza with excellent landscaping features and a car parking layout that is safe and efficient for visitors and students alike.

Sport is an integral part of the Kineton High School curriculum and the school's facilities also serve the needs of the local community.

As such the position of the sports block in Option 1 was discounted because it hindered community access and comprised school security. This position also created construction logistics problems next to a live school site during the construction phase and encroached on the playing fields to the rear, resulting in the loss of several mature trees which help screen light from the Astro turf pitch floodlights.

Due to the school being in operation for the duration of the build, the existing school buildings need to be retained until the new facilities are complete. The existing Integrid school buildings also cannot be partially demolished. This means that the new blocks cannot be located to the south eastern part of the site as option 2.

The arrangement of the landscape in Option 4 was favoured to Option 3 as it has provided benefits such as space within the car park to embark pupils onto coaches in an orderly way, brought disabled and visitor parking bays closer to the entrance, consolidated all the MUGAS to the North and provided a more celebrated frontage and student access.



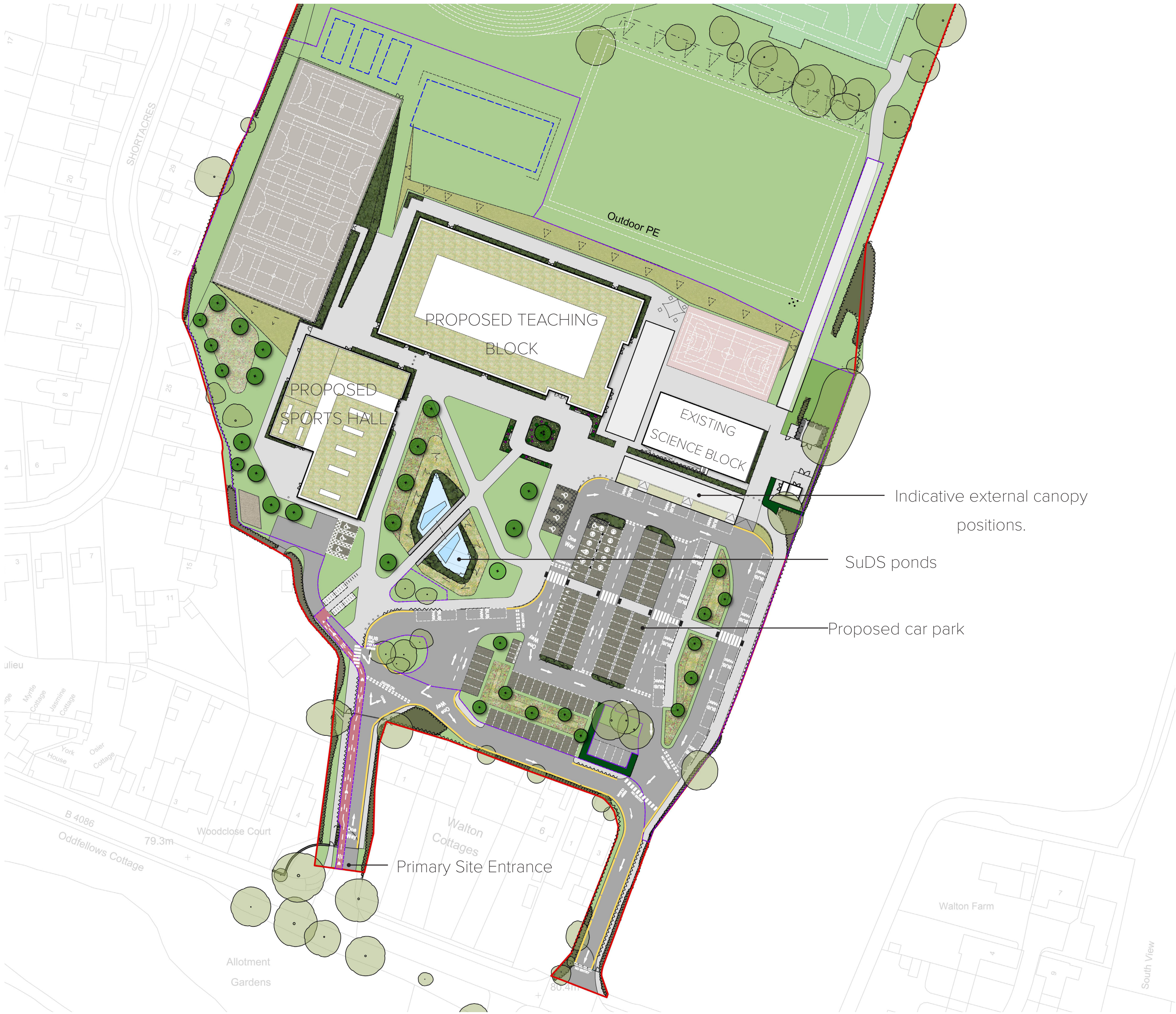
Final Design - Following further stakeholder consultation

It's important that the new Kineton High School Campus works for the whole community.

If you have any feedback on, or questions about, these plans, please email the team at [info@kinetonschoolconsultation.co.uk](mailto:info@kinetonschoolconsultation.co.uk) or call us on **0808 168 8296**



# 03. THE NEW SCHOOL



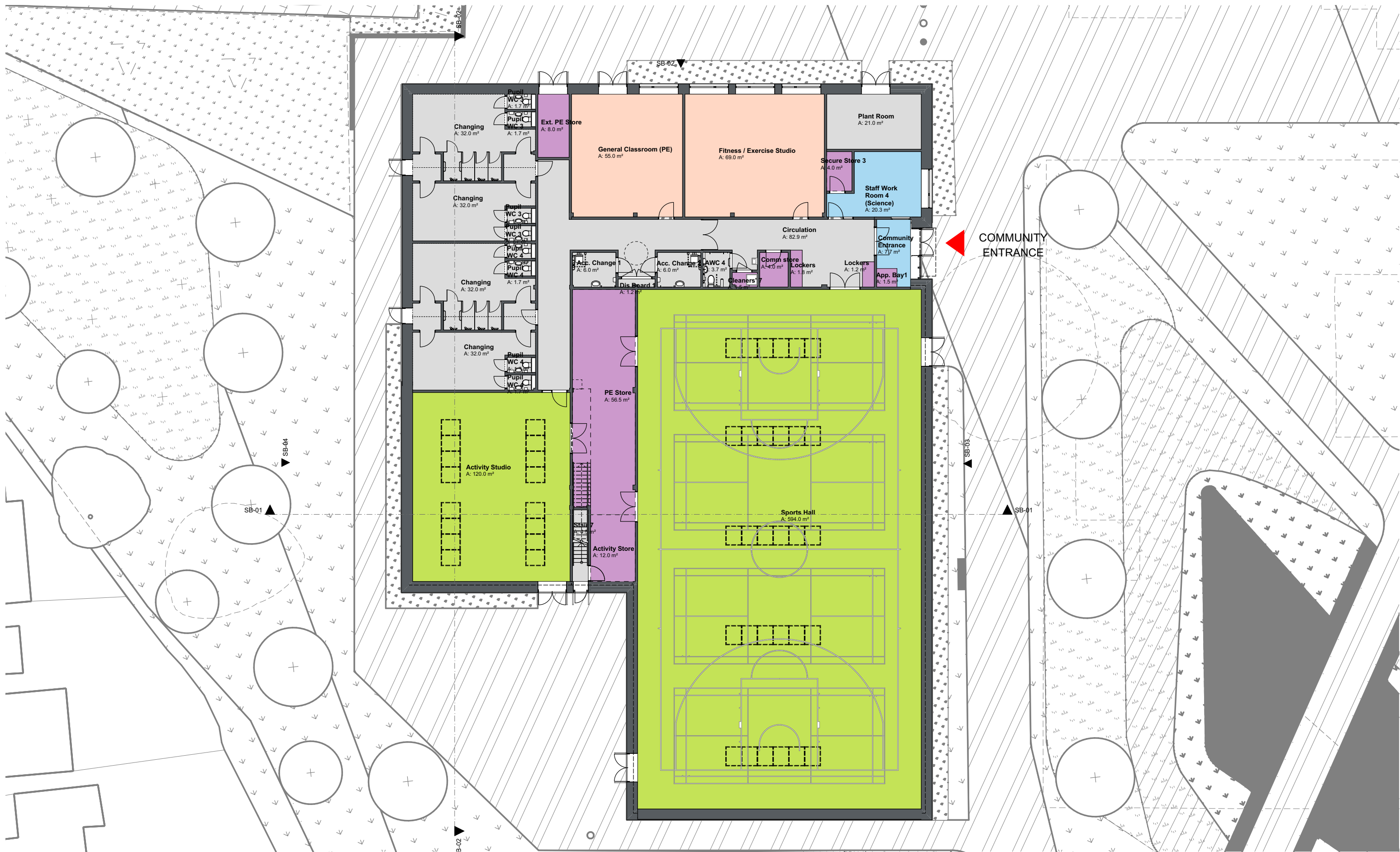
## KEY SITE LAYOUT FEATURES

- The proposed Masterplan has created a new campus redefined by the new large frontage approach that aims to enhance the pupil and wider community experiences. A large green space to the front of the school will create a welcoming campus approach for pupils, staff and the wider community.
- Vehicular routes in and out of the site will utilise the existing one way system. This is further enhanced by the design of the car park. The one way system helps to ensure maximum safety for road users and pedestrians alike.
- Pedestrian movement is rationalised and prioritised in the design with clear routes from Banbury Road to the pupil and visitor entrances, and safe routes from bus drop-off bays to the school buildings.
- Cycle access has also been improved with the addition of a painted cycle lane on the Western access point that leads to the relocated cycle parking South of the proposed sports hall.
- The existing playing fields and sport pitches are minimally affected by the construction of the new school and are to be left in situ. In The existing Tennis/Netball Courts are to be refurbished with new surfaces and fencing.
- Outdoor canopies supporting solar panels provide shelter and outdoor learning opportunities for students. These are indicative positions only until a detailed design is carried out and final requirements are firmed up.

## SITE LAYOUT

### KEY

- Planning Application Boundary
- Extent of Works
- Temporary buildings
- Proposed Building
- Existing Tree
- Proposed Tree (42 total)
- Grass to playing fields and general areas
- Proposed Turf to slopes
- Proposed Swale Meadow Seeding
- Proposed Meadow seeding
- Proposed Perennial Planting
- Proposed replacement hedge
- Existing hedge / hedgerow.
- Green Roof Total Area: 2435m2



## SPORTS BLOCK

- The separate sports block provides fantastic sporting facilities to the school and surrounding community.
- The building contains a 4 court sports hall, activity studio fitness suite and PE classroom with a variety of associated changing facilities.
- The location of the sports block allows for out of hours access, improved visibility and accessibility to the community, providing long term benefits of the facilities.

## SPORTS BLOCK



04. THE NEW SCHOOL



GROUND FLOOR

GROUND FLOOR

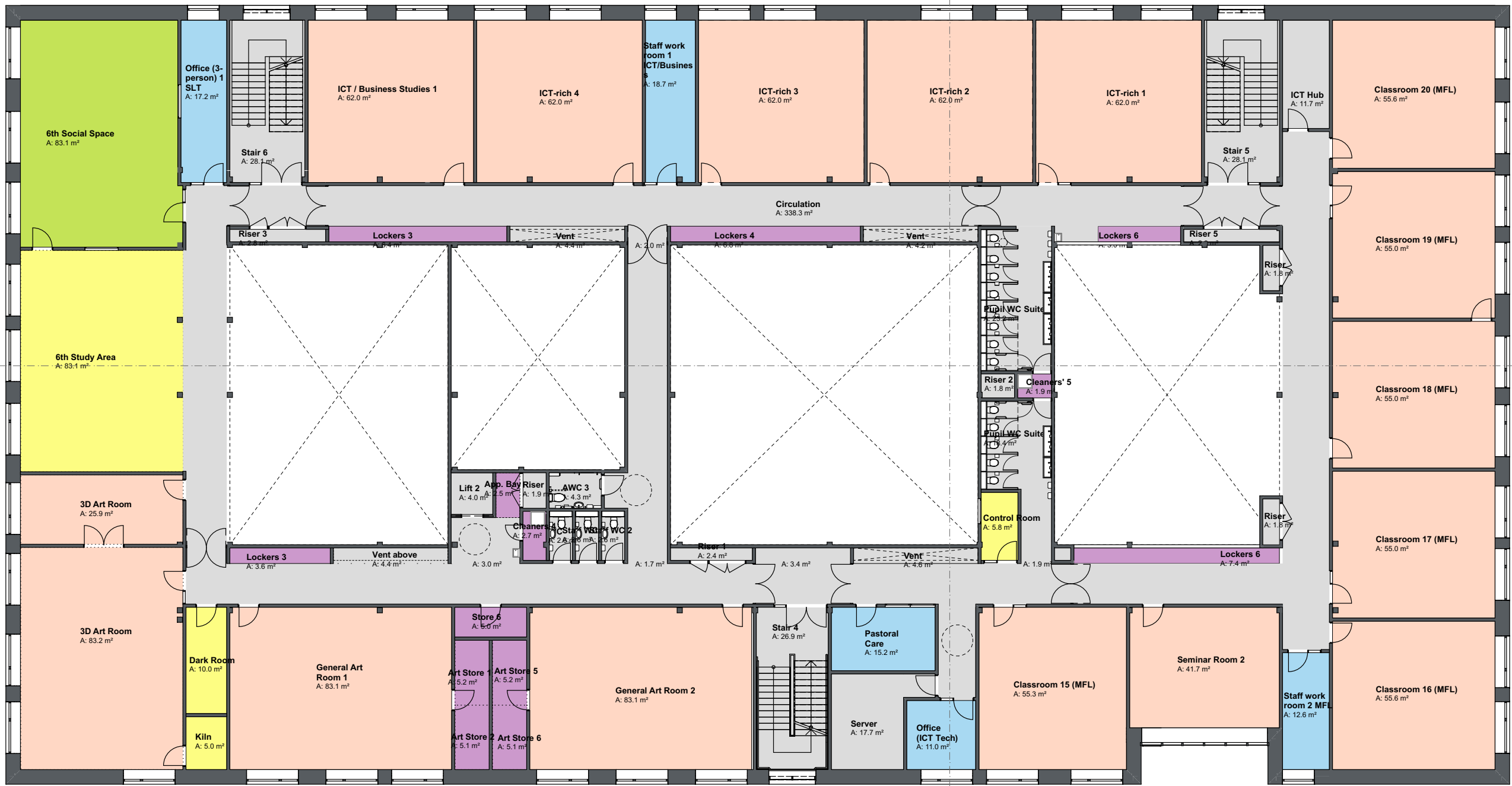
Each floor of the building has been designed in close partnership with the school to ensure specific teaching and operational needs are met, while also fully expressing the school's character and values.

The ground floor has been designed to welcome visitors and students alike. The prominent student entrance directs all entrants into the heart of the building, placing them in the triple height, naturally lit, dining area, with good access to the external dining spaces and the main hall.

At the other end of the building the visitors' entrance leads directly into the triple height Learning Resource Centre space.

The administration centre and Special Educational Needs suite is located close by to provide supervision and welfare support to all students.

The ground floor is also home to the new music facilities with dedicated practice rooms, food technology, constructional textiles, resistant materials and graphic design.



FIRST FLOOR

FIRST FLOOR

The first floor contains a large number of new teaching spaces, including the Languages and Art departments, complete with Dark Room and Kiln, with several Information Communications Technology (ICT) rooms.

A dedicated sixth form area, including study and social spaces are located in a prominent position open to the Learning Resource Centre below.



SECOND FLOOR

SECOND FLOOR

The second floor also provides a large number of teaching facilities for the school.

The Maths, English and Humanities departments are located on this floor, with a centrally shared Information Communications Technology (ICT) room.

To support these spaces, staff facilities are available throughout, providing superb access for teaching staff and passive supervision of the building as a whole.





LEARNING RESOURCE CENTRE

Located at the visitor entrance to the building is the Learning Resource Centre (LRC). The LRC accommodates the school library, ICT facilities and group learning spaces within one triple height hub.

A mezzanine study area provides a separate space for sixth form pupils.



DINING

The main dining area is located on the ground floor, providing a focal point for school life.

Upon entering the building, pupils move through this congregation space and can then access the relevant parts of the school, or flow towards the external play areas as required.

The dining space has been designed to provide a bright, naturally lit and ventilated space, with a focus on school identity and acoustic comfort.



NET ZERO CARBON AND SUSTAINABILITY

In line with government requirements, the Department for Education is committed to reducing carbon emissions to zero across their estate by 2050. The recent announcement outlined that 'Rebuilding projects will be greener, helping meet the government's net zero target, and will also focus on modern construction methods to create highly skilled jobs and boost the construction sector'.

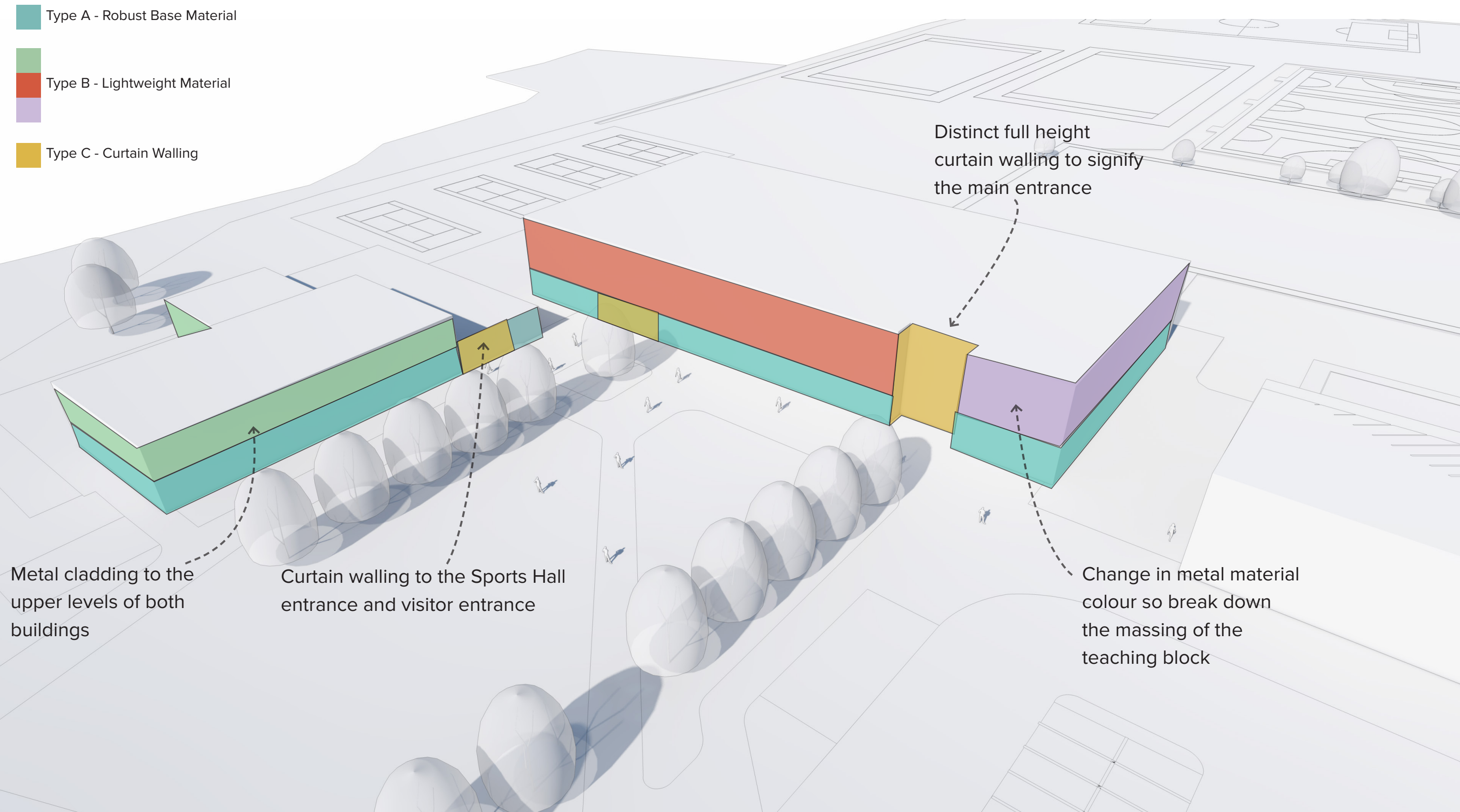
The new school buildings will achieve Net Zero Carbon in Operation. All new school buildings are to be future-proofed to avoid the risk of overheating by testing the building design with an alternative standard to the current Overheating Risk Assessment Criteria.

Key NZCio features:

- Photovoltaic (PV) array (solar panels) for sustainable energy.
- Reduced reliance on fossil fuels.
- Improved building fabric - Including thermal and air tightness characteristics.
- Passive design maximising natural daylight and ventilation.
- Provide energy efficiently e.g. PV (solar) panels and air source heat pumps.
- Reduce energy demand of the building.



# 06. EXTERNAL DESIGN



## EXTERNAL MATERIAL CONCEPT

The materials of the proposed building have been carefully considered to provide a solution, which creates the desired aesthetic and robustness whilst being feasible within the project budget.

Fibre cement cladding will wrap around the entirety of the building at ground floor level providing the vision for a robust base absorbing the activity of a busy school and community environment.

The upper floors will be clad in a raised standing seam metal cladding, which provides a lightweight rainscreen that can incorporate feature colours to break down the visual mass of the two blocks.

The front elevation will benefit from recessed coloured curtain walling based on the school branding to highlight the key entrances to the building. This will aid wayfinding upon the approach, whilst remaining subtle and non-obtrusive to the neighbouring properties on the school's western boundary. The window reveals will also incorporate this accent branding colour to tie the separate elements of the campus site into a cohesive whole.



FRONT FACADE VIEW

## TEACHING BLOCK FACADE TREATMENT

After establishing the material strategy, LSI Architects undertook several colour workshops with the Department for Education and Kineton High School to establish a colour scheme that outwardly represents the ambition of the project.

A mature palette of greys, blacks, and blues was decided upon for the main body of the two buildings. Added to this is a contrasting red that represents the school branding and highlights key parts of the facade.

The teaching block will be predominantly grey and black, whereas the sports block is given a lighter blue tone, because it is located closer to neighbouring residents.



VIEW FROM THE HARD GAMES COURT

## SPORTS BLOCK FACADE TREATMENT

The lighter top cladding colours visually blend in with the horizon and the detailing is kept subtle, emphasising the irregular spacing of the metal profile cladding.

Change in material breaks up the massing and visually alleviates the size of surfaces. By taking the fibre cement panels around the base of the activity studio, we not only add relief, but reduce the apparent height of this element.

The Sports Block façades, that face residents on the Western boundary, do not contain any windows to prevent overlooking. When combined with the additional planting, this lessens the visual impact of the building.



SPORTS BLOCK REAR VIEW



It's important that the new Kineton High School Campus works for the whole community.

If you have any feedback on, or questions about, these plans, please email the team at [info@kinetonschoolconsultation.co.uk](mailto:info@kinetonschoolconsultation.co.uk) or call us on **0808 168 8296**



# 07. LANDSCAPE



## PLANTING PRECEDENT IMAGES



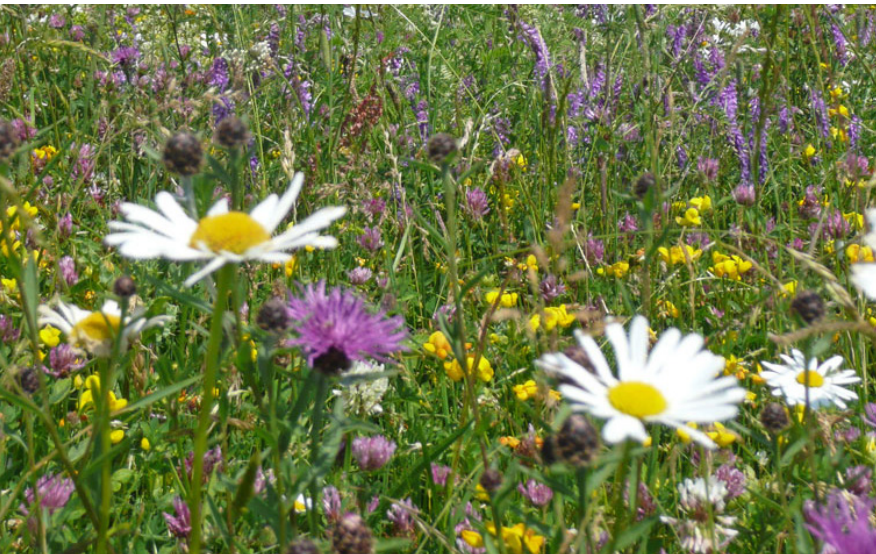
### HERB GARDEN



### MEMORIAL GARDEN PLANTING



### MEADOW PLANTING



### TREE PLANTING



### SUDS POND PLANTING



### PERIMETER PLANTING



The proposed planting has several key functions:

- Amenity value.** Natural green space and trees contribute to physical and mental health and bring colour, textural and seasonal interest to the school site.
- Biodiversity improvement.** Planting generally will help this improvement and provide valuable habitat area throughout the site. Meadow seeding and the SuDS pond planting in particular help in this regard. The maintenance strategy will also have a focus on biodiversity / habitat improvement.
- Protection / screening.** The perimeter of the buildings will have protective planting installed to reduce the likelihood of lessons being interrupted from the external play spaces. The western boundary in particular has been screened extensively with trees to mitigate the views of the proposed sports block.
- Calming.** The new memorial garden will front the student entrance and allow a calm space for reflection or waiting. A memorial tree is to be planted by the school in the centre of the garden.

## PLANTING TO WESTERN BOUNDARY

Hornbeam  
(Carpinus betulus)

Leaf type: Deciduous  
Ultimate height: 15-20m  
Height at time of installation: 5.5m - 6m

This species has been chosen for its close branching pattern and large ultimate size. Hornbeams also have good autumn colour.

They have been placed furthest away from neighbouring gardens to limit overshadowing in the mornings.

Holly  
(Ilex aquifolium)

Leaf type: Evergreen  
Ultimate height: 10m  
Height at time of installation: 4.5m - 5m

Holly trees have been chosen for thier dense evergreen foliage and relatively small size. This is important due to the proximity of planting to neighbouring gardens.





# 08. CAMPUS VIEWS



AERIAL VIEW - SCHOOL FRONTAGE



VIEW OF PUPIL ENTRANCE AND MEMORIAL GARDEN



AERIAL VIEW - REAR SPORTS FIELD



VIEW OF FRONT PLAZA

It's important that the new Kineton High School Campus works for the whole community.

If you have any feedback on, or questions about, these plans, please email the team at [info@kinetonschoolconsultation.co.uk](mailto:info@kinetonschoolconsultation.co.uk) or call us on **0808 168 8296**



KEY PROGRAMME DATES:

- Planning Application Submission - November 2021
- Commencement of Works on Site - April 2022
- New Sports Hall Complete - January 2023
- New Teaching Block Complete - March 2024
- Demolition of Existing School Buildings and Formation of new Car Park - March 2024 to January 2025
- Works Complete - January 2025



Key

- 1 Contractors Parking on existing hardcourts
- 2 Temporary Staff Parking
- 3 Temporary Sports Hall & Changing Facilities
- 4 New Sports Hall
- 5 New 3 Storey Teaching Block
- Pedestrian Access to the Temporary Sports Hall / Changing
- Construction Access
- Access to Temporary Car Parking