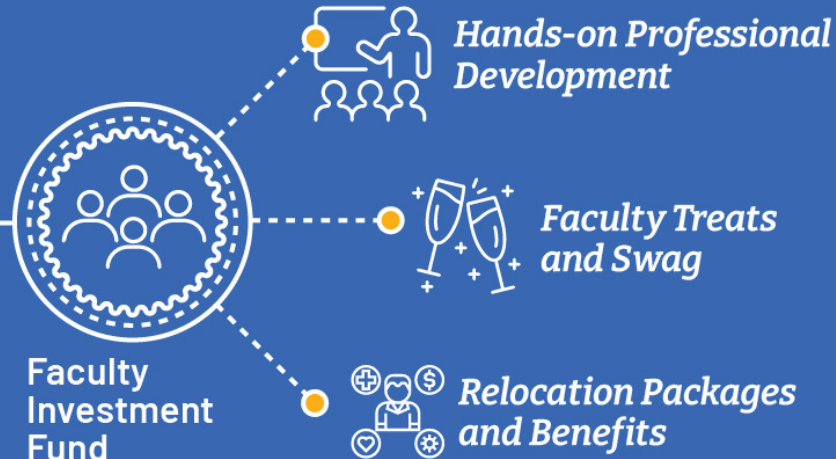


WHAT IS COMMUNITY GIVING?

**Community
Giving**
Our annual
school-wide
fundraising
program



ISDenver Priorities Fund
Flexible support which allows us to maintain our commitment to global citizenship and best educational practices, year over year.



Financial Assistance Fund
10% annual increase in Financial Assistance budget



Staff Appreciation Fund

A time-limited fund during the holiday season, pooled and distributed across all staff members at ISDenver.

Why should I prioritize giving to ISDenver when I already pay tuition?

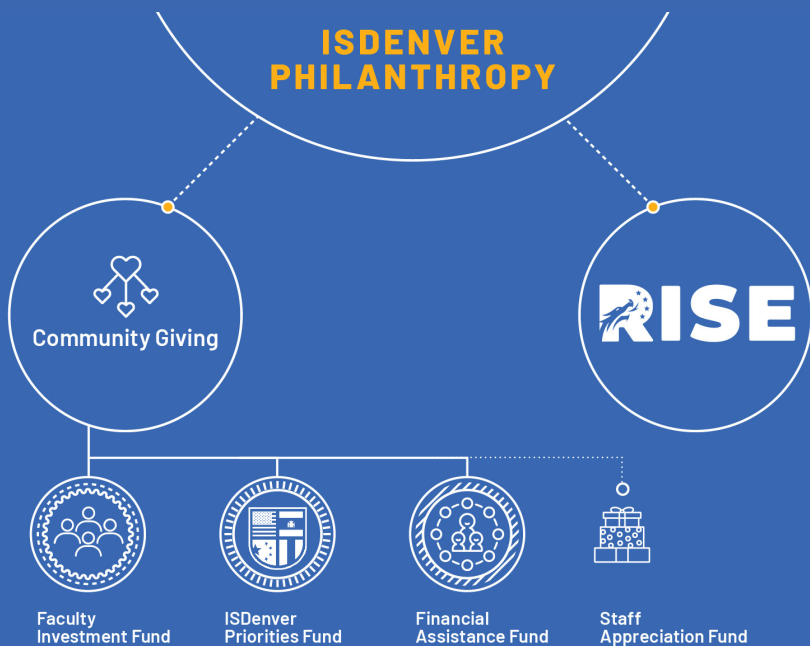
At ISDenver, tuition covers the basic operating budget while our Community Giving program supports the 'ISDenver Experience'. Our small community is our main source of philanthropic support: each year, roughly 60% of our community has helped to fund improvements to the school that 100% of us enjoy. We hope that you will make ISDenver the top of your philanthropic priority list.

How do the RISE campaign and the Staff Appreciation Fund support ISDenver?

Simply put, **Community Giving** is our annual fundraising push, with three permanent sub funds (see reverse). The Staff Appreciation Fund is a **holiday season only, time restricted opportunity to donate directly to our faculty** that is *administered* by the Community Giving program.

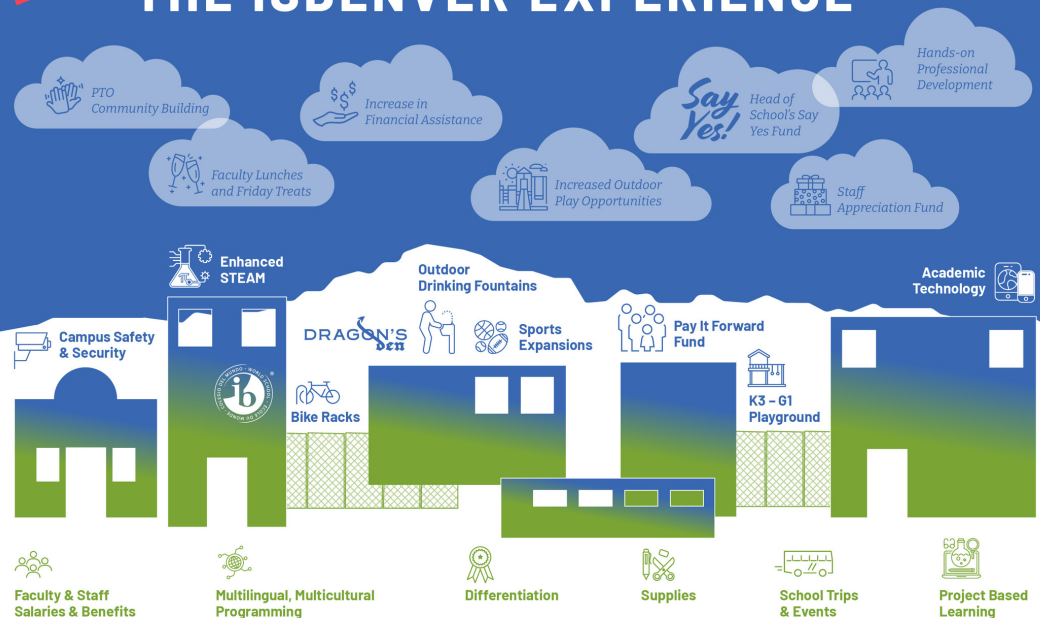
Our **RISE** capital campaign is a multi-year project specifically supporting the opening of the Mary Louise Evans building, and is *not* administered by the Community Giving program. **Gifts given to Community Giving are intended for year-over-year programs supporting the ISDenver Experience and will always be needed.**

ISDENVER PHILANTHROPY



THE ISDENVER EXPERIENCE

TUITION + COMMUNITY GIVING



You Should Know:

We love it when you give monthly! Many of our donors simply set up a monthly gift through any of our giving forms at [ISDenver.org/support](https://isdDenver.org/support). This helps the school to budget ahead, particularly when meeting unforeseen challenges like COVID-19. A popular choice in 2021: committing to \$50 every month!

Every gift matters. This year, we hope to reach the giving rate of our Faculty and Staff by having at least 70% of our families make a gift to Community Giving this year. Most years our parent community participates at a 30-40% rate while our faculty often hit 80%. Last year we broke 60% - will you help us reach the bar our faculty have set?

Check out the other side to see our three fund options and what they support, then head to isdDenver.org/support to choose a fund!