



October 2021 e-Newsletter

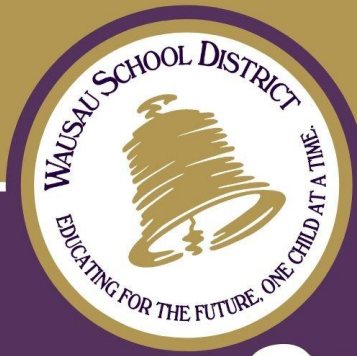
Our Mission . . .To advance student learning, achievement, and success.



We Want to Hear From You!

The Wausau School District is asking all district residents to take its Facilities Survey. Information from the survey will be used by district leaders and the Board of Education to evaluate solutions that meet district needs, are financially responsible, and move the district community forward.

SURVEY DEADLINE: October 15



Take Our Survey!

Click to Take our Survey!

After the survey closes on October 15th, join us for a conversation about the future of the Wausau School District. All parents/guardians, staff, and community members are invited! Let's talk about the district's needs and possible solutions to them. Be sure to RSVP to the event below!



Community Engagement Session

Thursday, October 28 - 5pm to 6pm

John Muir Middle School Auditorium

RSVP to our Community Engagement Session

LOCATION

John Muir Middle School, 1400 W. Stewart Avenue

DATE AND TIME

10/28/21 5:00pm - 10/28/21 6:00pm US/Central

Join us for a conversation about the future of the district. Help us figure out the solutions to our facility needs.

I'll Be There!

Maybe

I Can't Make It

A lot of great things are happening in the Wausau School District this year!



The Wausau School District is the first school district in the state of Wisconsin to implement a program called *Leader in Me*.

Leader in Me is used by schools and school districts all around the world with the goal of inspiring greatness in every student. Through the program, our students, starting at age 5, will learn the 7 Habits of Highly Effective People to manage their emotions, set and achieve positive goals, feel and show empathy, maintain positive relationships, and make responsible decisions.

So, why is the school district implementing this program? There's a need. Leaders in the business community say that students everywhere often lack soft skills as they enter the workforce. Skills like interacting with people and managing work. Here at the Wausau School District, our mission is to 'advance student learning, achievement, and success.' This program will do just that -- setting every one of our students up for success, not just as they attend our District, but well beyond high school.

Celebrating our Wonderful Partnerships

Central Wisconsin Manufacturing Alliance Tours Wausau East, Wausau West

The executive team from CWIMA - the Central Wisconsin Manufacturing Alliance - recently took a tour of the Technology Ed and Engineering programs at Wausau East and Wausau West.

CWIMA continues to support our students and programs in Tech Ed through donating materials, offering field trips, providing guest speakers, and offering

work-based learning opportunities. We learned that the manufacturing sector anticipates over 6,000 local jobs available in a variety of different careers including accounting, human resources, machining, welding, distribution, transportation, and IT.

Students taking these hands-on courses in automotive, welding, woods, metals, engineering, graphics, and building trades receive hands-on experiences that build skills to be college, career, and life ready. Thank you CWIMA for your support and strong partnerships in the Wausau School District!



Our Woodmizer helps the District's partnership with the Wausau & Marathon County Parks, Recreation, and Forestry Department Grow

[Check out WSAW's Story about it](#)

United Way of Marathon County Donates 'Calming Kits'

We want to take a moment to thank the United Way of Marathon County, its business partners, and volunteers, for assembling and donating dozens of 'Calming Kits' to the Wausau School District. The kits include items for our middle and high school students who may need brain breaks, tools for self-regulating, and some inspiration.

We have some incredible community partners, including the United Way of Marathon County. THANK YOU for everything you do for our students!



Marathon County Labor Council Donates Backpacks and Money to the Wausau School District

The Wausau School District would also like to send a big THANK YOU to the Marathon County Central Labor Council! They dropped off all kinds of school supplies and a check, which Superintendent Dr. Keith Hilts and Director of Pupil Services Angie Lloyd gladly accepted, last Thursday.

All of this was raised on Labor Day during a 'Stuff the Bus' event held at the Labor Temple.

Thank you to everyone who donated to the cause!



We're Hiring!

**Educating for the Future,
One Child at a Time**

**Regular, substitute,
and support employment
opportunities available**

For more information about
Wausau School District
employment opportunities, please
visit Human Resources at

**www.wausauschools.org
or call 715-261-0500**



@WausauSchDist

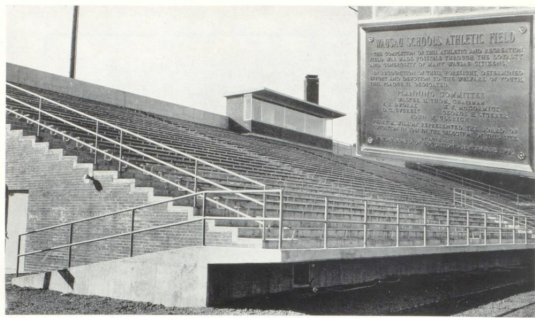
Calling all Volunteers!

O.N.E. (Our Network for Education) is the
Wausau School District's Volunteer
Program!

[Click Here to Learn More](#)



Thom Field Celebrates 70 Years!



The new stadium located at Stark and Tenth Streets was dedicated on September 7, 1951.

The most modern recreation field in the state at the time was dedicated on September 7, 1951. The field was then officially named Wausau Schools Athletic Field.



Public sentiment favored the name "Thom Field" for Walter H. Thom, Chairman of the stadium dream but modest-minded Mr. Thom would not permit the use of his name. Nevertheless, the site has long since been referred to by Wausau citizens, as Thom Field, in honor of the man who did the most to make a dream come true.

CHECK THIS OUT: Preparing Thom Field for Football 70 Years Later

A lot of work goes into preparing Thom Field for football. District Groundskeeper Rex Zemke explains what it all takes to make sure the field not only looks nice but is safe for players, too!



Check out our new Wausau School District website!



Visit wausauschools.org

The Wausau School District does not discriminate on the basis of race, age, color, religion, national origin, ancestry, creed, pregnancy, marital status, parental status, sexual orientation, sex, (including transgender status, change of sex or gender identity), or physical, mental, emotional, or learning disability ("Protected Classes").



Wausau School District | 415 Seymour Street, P.O. Box 359, Wausau, WI 54402-0359

[Unsubscribe dwhite@wausauschools.org](mailto:dwhite@wausauschools.org)

[Update Profile](#) | [About Constant Contact](#)

Sent by dwhite@wausauschools.org in collaboration
with



Try email marketing for free today!