

ST. MARY'S INTERNATIONAL SCHOOL



IB GUIDE 2022-24

Table of Contents

1. Introduction
2. Guiding Statement
3. Grade 11 and 12 at St. Mary's
4. Deciding on a pathway
5. IB Mission
6. Learner Profile
7. Introduction to IB Diploma Programme (DP)

8. Core
9. Theory of Knowledge (TOK)
10. Extended Essay (EE)
11. Creativity, Activity and Service (CAS)
12. Assessment in Diploma Programme
13. Diploma Programme Subject Choices
14. Useful Links



Introduction

The purpose of this guide is to help students and parents understand the two pathways available for the Grade 11 and Grade 12 years of study. The central programme of study in Grade 11 and Grade 12 comprises the International Baccalaureate (IB) Diploma Programme (DP) and the St. Mary's Diploma. Students may pursue the full IB Diploma, or take a selection of individual IB DP and St. Mary's courses.



Guiding Statement

Our Mission

St. Mary's International School is founded on the Mennaisian mission to Instruct, Educate and Impart Christian Values in a safe and nurturing environment. Our students learn to challenge themselves in a rigorous academic program based on best practices and 21st century pedagogy. They grow and mature through education focused on the whole child—personal, social, emotional, ethical and spiritual—and by participating in enriching co-curricular opportunities. They become responsible global citizens by exposure to Christian values and core beliefs that build character and foster compassionate action in our

world. Through this process of self-discovery and personal growth, our students become life-long learners who embrace diversity, lead by example and have the flexibility necessary for success in a world of accelerating change.

Our Beliefs

As a Catholic international school, we believe that:

- Education integrates the acquisition of knowledge with the development of free and responsible young men and the deepening of personal faith.
- Education is based on love and respect for the person, in full recognition of the dignity of humankind created in God's image and destined to live in union with Him.
- An all-boy environment creates a place wherein positive self-esteem and expression can be fully achieved and where learning meets the developmental needs of boys.
- Personal development, characterized by empathy and trust, will engender beliefs and actions conducive to global citizenship for the betterment of humanity through the promotion of peace, justice, freedom and truth.
- Rigorous and challenging academic programs meeting the diverse needs of students within a safe, caring and respectful environment best prepare them for higher education.
- A comprehensive and enriching co-curricular program nurtures individual expression and fosters growth, enabling students to reach their full all-round potential and enhance their self-worth.
- Learning best takes place in a school community that enables its members to establish an identity respectful of both cultural and religious differences in an atmosphere that values diversity.

Our Schoolwide Learner Expectations

The St. Mary's community is committed to developing self-directed, life-long learners who are:

- Of Good Character: Reflecting values consistent with Christian principles,
- Knowledgeable: Demonstrating a firm foundation in the academic, physical and artistic disciplines,
- Globally Aware: Showing sensitivity and compassion toward human and global concerns in a multi-cultural world, and exhibiting initiative, reliability and perseverance in their response to these concerns,
- Critical and Creative Thinkers: Confidently using appropriate resources and current technology, either independently or collaboratively, to reason, make decisions and solve problems in a variety of contexts,
- Effective Communicators: Receiving and expressing ideas and information competently and precisely.

Our Core Values

Respect
Compassion

Honesty
Fairness

Responsibility

Deciding on a Pathway (Grade 10)

Current Students

During Grade 10, the High School Counselling team and IB Coordinator, outline the details of the academic options for Grades 11 and 12. Students, in discussion with their parents, counselors, advisors and current teachers, determine which options and which courses in each subject group might be appropriate for them and their post-secondary study plans.

When there are concerns about a student's present level of achievement, the school reserves the right to not accept the student into the IB Diploma Programme. Such students will be guided to the IB and St. Mary's courses pathway to best meet their academic needs.

Entering Grade 11 at St. Mary's from Another School

Students applying from outside St. Mary's must complete the standard admissions procedures and entrance tests. The counselling team will review the results of these tests and transcripts forwarded from previous schools to help new students select the best option for Grades 11 and 12.

Factors to Consider When Choosing Courses

- Interests and passions
- Abilities
- University plans (consult counselors and web sites)
- Advice of teachers

Grade 11 and 12 at St. Mary's

There are two academic options available to students in Grades 11 and 12.

Option 1: The IB Diploma

The Diploma Programme is a comprehensive and rigorous two-year curriculum leading to a set of external examinations taken by students in May of their final year at St. Mary's. Students pursuing the IB Diploma complete the IB Core (TOK, CAS, and the Extended Essay) and study six subjects including studies in language and literature, language acquisition, individuals and societies, sciences, mathematics, and the arts (although they can, instead of an arts subject, choose two subjects from another area). Typically, three subjects are higher level, and the remaining three are at standard level.

Option 2: IB and St. Mary's Courses

If a student chooses or is recommended to not embark on the full diploma, they will enroll in a selection of IB and non-IB St. Mary's Courses. More information on St. Mary's courses can be found in the High School Program of Studies

Individual IB and St. Mary's courses may be preferable for some students based on the following:

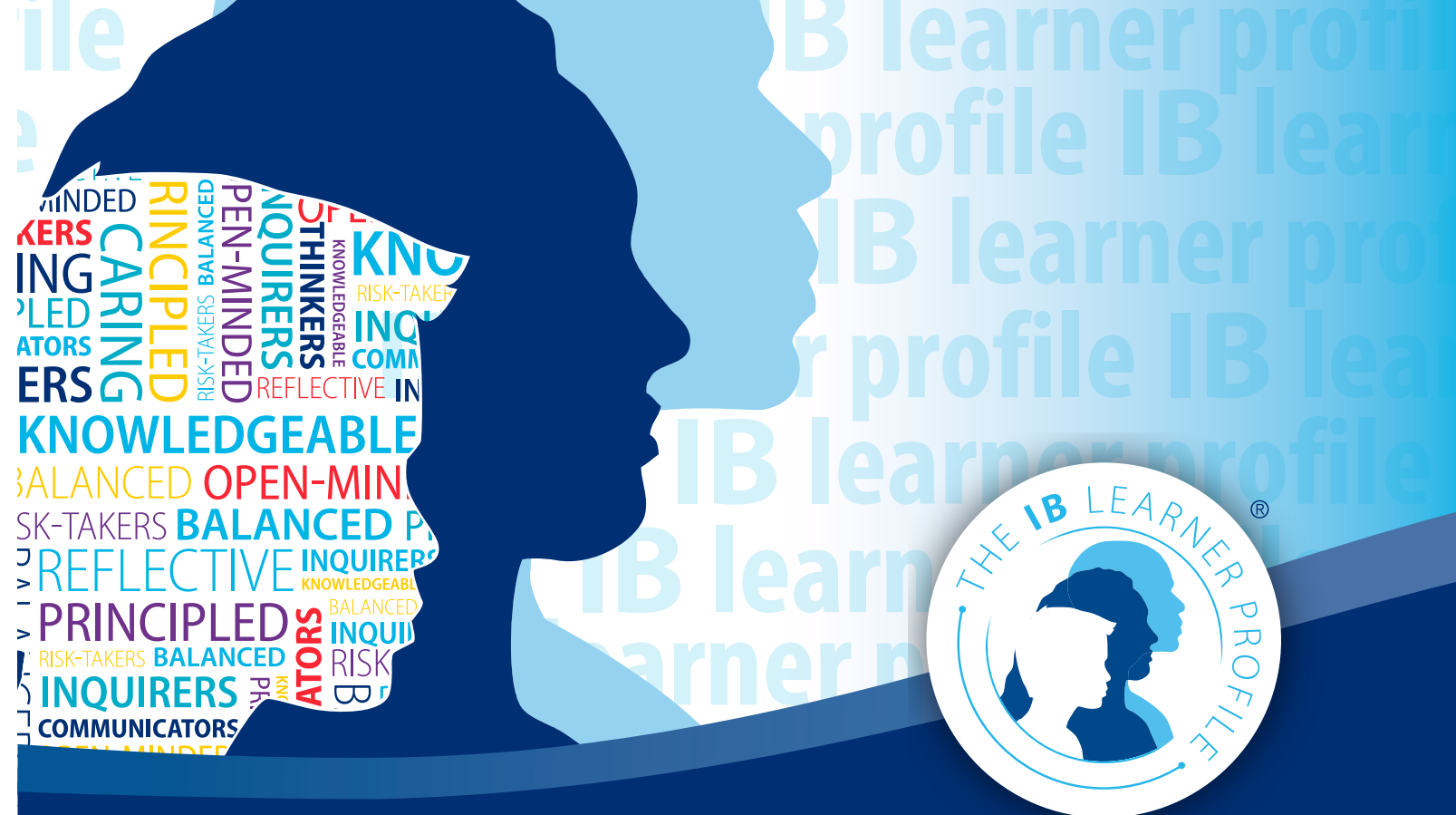
- Individual courses are still academically rigorous.
- The same courses and assessment as the full diploma are employed.
- HL subjects are not required, but can be taken in any subject.
- The IB Core is not completed, allowing the student more time to focus on other courses or activities.
- IB exams are taken and provide a university recognized qualification.

IB Mission Statement

The International Baccalaureate® aims to develop inquiring, knowledgeable and caring young people who help to create a better and more peaceful world through intercultural understanding and respect.

To this end the organization works with schools, governments and international organizations to develop challenging programmes of international education and rigorous assessment.

These programmes encourage students across the world to become active, compassionate and lifelong learners who understand that other people, with their differences, can also be right.



IB learner profile

The aim of all IB programmes is to develop internationally minded people who, recognizing their common humanity and shared guardianship of the planet, help to create a better and more peaceful world.

As IB learners we strive to be:

INQUIRERS

We nurture our curiosity, developing skills for inquiry and research. We know how to learn independently and with others. We learn with enthusiasm and sustain our love of learning throughout life.

KNOWLEDGEABLE

We develop and use conceptual understanding, exploring knowledge across a range of disciplines. We engage with issues and ideas that have local and global significance.

THINKERS

We use critical and creative thinking skills to analyse and take responsible action on complex problems. We exercise initiative in making reasoned, ethical decisions.

COMMUNICATORS

We express ourselves confidently and creatively in more than one language and in many ways. We collaborate effectively, listening carefully to the perspectives of other individuals and groups.

PRINCIPLED

We act with integrity and honesty, with a strong sense of fairness and justice, and with respect for the dignity and rights of people everywhere. We take responsibility for our actions and their consequences.

OPEN-MINDED

We critically appreciate our own cultures and personal histories, as well as the values and traditions of others. We seek and evaluate a range of points of view, and we are willing to grow from the experience.

CARING

We show empathy, compassion and respect. We have a commitment to service, and we act to make a positive difference in the lives of others and in the world around us.

RISK-TAKERS

We approach uncertainty with forethought and determination; we work independently and cooperatively to explore new ideas and innovative strategies. We are resourceful and resilient in the face of challenges and change.

BALANCED

We understand the importance of balancing different aspects of our lives—intellectual, physical, and emotional—to achieve well-being for ourselves and others. We recognize our interdependence with other people and with the world in which we live.

REFLECTIVE

We thoughtfully consider the world and our own ideas and experience. We work to understand our strengths and weaknesses in order to support our learning and personal development.

The IB learner profile represents 10 attributes valued by IB World Schools. We believe these attributes, and others like them, can help individuals and groups become responsible members of local, national and global communities.

INTRODUCTION TO THE DIPLOMA PROGRAM

The IB Diploma Programme (DP) is an academically challenging and balanced programme of education, with final examinations, that prepares students aged 16 to 19 for success at university and in life beyond. It has been designed to address the intellectual, social, emotional and physical well-being of students. The programme has gained recognition and respect from the world's leading universities.

IB students graduating with the IB diploma are able to study at universities all around the world, often with advanced credit. Students report that their involvement with the IB has given them the tools needed to succeed at college. In particular, students comment on their sense of preparedness, self-confidence, research skills and their ability to manage their time. Even more important, they have developed a sense of the world around them and their responsibility to it.

The Core

The DP core lies at the heart of the programme and reflects the IB's strong commitment to the principle of developing the whole person. The three elements of the core individually and collectively illuminate what it means to experience a DP education, and are driven by the IB's mission "to develop inquiring, knowledgeable and caring young people who help to create a better and more peaceful world through intercultural understanding and respect" (IB mission statement).

The core strives to make a difference to the lives of students. It should provide opportunities for students to think about their own values and actions, to deepen their understanding of their place in the world and to sensitively consider the contexts and views of others. Every DP student must complete the three core elements:

- Theory of knowledge (TOK)
- Creativity, activity, service (CAS)
- The extended essay (EE)



Course description and aims

The theory of knowledge (TOK) course plays a special role in the DP by providing an opportunity for students to reflect on the nature, scope and limitations of knowledge and the process of knowing. In this way, the main focus of TOK is not on students acquiring new knowledge but on helping students to reflect on, and put into perspective, what they already know. TOK underpins and helps to unite the subjects that students encounter in the rest of their DP studies. It engages students in explicit reflection on how knowledge is arrived at in different disciplines and areas of knowledge, on what these areas have in common and the differences between them.

The aims of the TOK course are:

- to encourage students to reflect on the central question, “How do we know that?”, and to recognize the value of asking that question
- to expose students to ambiguity, uncertainty and questions with multiple plausible answers
- to equip students to effectively navigate and make sense of the world, and help prepare them to encounter novel and complex situations
- to encourage students to be more aware of their own perspectives and to reflect critically on their own beliefs and assumptions
- to engage students with multiple perspectives, foster open-mindedness and develop inter-cultural understanding
- to encourage students to make connections between academic disciplines by exploring underlying concepts and by identifying similarities and differences in the methods of inquiry used in different areas of knowledge
- to prompt students to consider the importance of values, responsibilities and ethical concerns relating to the production, acquisition, application and communication of knowledge.

Course description and aims

The extended essay is a compulsory, externally assessed piece of independent research into a topic chosen by the student and presented as a formal piece of academic writing. The extended essay is intended to promote high-level research and writing skills, intellectual discovery and creativity while engaging students in personal research. This leads to a major piece of formally presented, structured writing of up to 4,000 words in which ideas and findings are communicated in a reasoned, coherent and appropriate manner.

Students are guided through the process of research and writing by an assigned supervisor (a teacher in the school). All students undertake three mandatory reflection sessions with their supervisor, including a short interview, or viva voce, following the completion of the extended essay.

Extended essay topics may be chosen from a list of approved DP subjects—normally one of the student’s six chosen subjects for the IB diploma or the world studies option. World studies provides students with the opportunity to carry out an in-depth interdisciplinary study of an issue of contemporary global significance, using two IB disciplines.

The aims of the extended essay are to provide students with the opportunity to:

- engage in independent research with intellectual initiative and rigour
- develop research, thinking, self-management and communication skills
- reflect on what has been learned throughout the research and writing process

Course description and aims

Creativity, activity, service (CAS) is at the heart of the DP. With its holistic approach, CAS is designed to strengthen and extend students’ personal and interpersonal learning from the Primary Years Programme (PYP) and Middle Years Programme (MYP).

CAS is organized around the three strands of creativity, activity and service defined as follows.

- Creativity—exploring and extending ideas leading to an original or interpretive product or performance.
- Activity—physical exertion contributing to a healthy lifestyle.
- Service—collaborative and reciprocal engagement with the community in response to an authentic need.

CAS aims to develop students who:

- enjoy and find significance in a range of CAS experiences
- purposefully reflect upon their experiences
- identify goals, develop strategies and determine further actions for personal growth
- explore new possibilities, embrace new challenges and adapt to new roles
- actively participate in planned, sustained and collaborative CAS projects
- understand they are members of local and global communities with responsibilities towards each other and the environment.

A CAS experience is a specific event in which the student engages with one or more of the three CAS strands. It can be a single event or an extended series of events. A CAS project is a collaborative series of sequential CAS experiences lasting at least one month. Typically, a student’s CAS programme combines planned/unplanned singular and ongoing experiences. All are valuable and may lead to personal development. However, a meaningful CAS programme must be more than just a series of unplanned/singular experiences. Students must be involved in at least one CAS project during the programme.



Assessment in the Diploma Programme

Students take written examinations at the end of the programme, which are marked by external IB examiners. Students also complete assessment tasks in the school, which are either initially marked by teachers and then moderated by external moderators or sent directly to external examiners.

The grades awarded for each course range from 1 (lowest) to 7 (highest). Students can also be awarded up to three additional points for their combined results on TOK and the EE. The diploma is awarded to students who gain at least 24 points, subject to certain minimum levels of performance across the whole programme and to satisfactory participation in the CAS requirement. The highest total that a DP student can be awarded is 45 points.

Assessment is criterion-related, which means student performance is measured against specified assessment criteria based on the aims and objectives of each subject's curriculum, rather than the performance of other students taking the same examinations.



DIPLOMA PROGRAMME SUBJECT CHOICES AT ST. MARYS

Group 1: LANGUAGE AND LITERATURE	
ENGLISH A: LANGUAGE AND LITERATURE	STANDARD LEVEL, HIGHER LEVEL
JAPANESE A: LANGUAGE AND LITERATURE	STANDARD LEVEL, HIGHER LEVEL

Group 2: LANGUAGE ACQUISITION	
JAPANESE B	STANDARD LEVEL, HIGHER LEVEL
FRENCH B	STANDARD LEVEL, HIGHER LEVEL
JAPANESE AB INITIO	STANDARD LEVEL
FRENCH AB INITIO	STANDARD LEVEL

Group 3: INDIVIDUALS AND SOCIETIES	
ECONOMICS	STANDARD LEVEL, HIGHER LEVEL
HISTORY	STANDARD LEVEL, HIGHER LEVEL
BUSINESS MANAGEMENT	STANDARD LEVEL, HIGHER LEVEL

Group 4: SCIENCES	
BIOLOGY	STANDARD LEVEL, HIGHER LEVEL
CHEMISTRY	STANDARD LEVEL, HIGHER LEVEL
PHYSICS	STANDARD LEVEL, HIGHER LEVEL
DESIGN TECHNOLOGY	STANDARD LEVEL, HIGHER LEVEL
COMPUTER SCIENCE	STANDARD LEVEL, HIGHER LEVEL

Group 5: MATHEMATICS	
MATHEMATICS: ANALYSIS AND APPROACHES	STANDARD LEVEL, HIGHER LEVEL
MATHEMATICS: APPLICATIONS AND INTERPRETATION	STANDARD LEVEL, HIGHER LEVEL

Group 6: ARTS	
MUSIC	STANDARD LEVEL, HIGHER LEVEL
ART	STANDARD LEVEL, HIGHER LEVEL



GROUP ONE

LANGUAGE AND LITERATURE

Group 1: Language and Literature

Course Description

The language A: Language and Literature course aims at studying the complex and dynamic nature of language and exploring both its practical and aesthetic dimensions. The course will explore the crucial role language plays in communication, reflecting experience and shaping the world, and the roles of individuals themselves as producers of language. Throughout the course, students will explore the various ways in which language choices, text types, literary forms and contextual elements all effect meaning. Through close analysis of various text types and literary forms, students will consider their own interpretations, as well as the critical perspectives of others, to explore how such positions are shaped by cultural belief systems and to negotiate meanings for texts.

Aims

The aims of studies in language and literature courses are to enable students to:

- engage with a range of texts, in a variety of media and forms, from different periods, styles and cultures
- develop skills in listening, speaking, reading, writing, viewing, presenting and performing
- develop skills in interpretation, analysis and evaluation
- develop sensitivity to the formal and aesthetic qualities of texts and an appreciation of how they contribute to diverse responses and open up multiple meanings
- develop an understanding of relationships between texts and a variety of perspectives, cultural contexts, and local and global issues, and an appreciation of how they contribute to diverse responses and open up multiple meanings
- develop an understanding of the relationships between studies in language and literature and other disciplines
- communicate and collaborate in a confident and creative way
- foster a lifelong interest in and enjoyment of language and literature

Assessment at a Glance

EXTERNAL/ INTERNAL	TYPE OF ASSESSMENT	WEIGHING OF FINAL GRADE	
		STANDARD LEVEL (SL)	HIGHER LEVEL (HL)
EXTERNAL	PAPER 1: GUIDED TEXTUAL ANALYSIS	35%	35%
	PAPER 2: COMPARATIVE ESSAY	35%	25%
	HL ESSAY		20%
INTERNAL	INDIVIDUAL ORAL	30%	20%

Courses offered at St. Mary's

COURSE	LEVEL
ENGLISH A: LANGUAGE AND LITERATURE	STANDARD, HIGHER
JAPANESE A: LANGUAGE AND LITERATURE	STANDARD, HIGHER



GROUP TWO

LANGUAGE ACQUISITION

Group 2: Language B

Course Description

Language acquisition consists of two modern language courses – Language ab initio and Language B – designed to provide students with the necessary skills and intercultural understanding to enable them to communicate successfully in an environment where the language studied is spoken.

Language B is a language acquisition course designed for students with some previous experience of the target language. Students further develop their ability to communicate through the study of language, themes and texts. There are five prescribed themes: identities, experiences, human ingenuity, social organization and sharing the planet.

Both language B SL and HL students learn to communicate in the target language in familiar and unfamiliar contexts. The distinction between language B SL and HL can be seen in the level of competency the student is expected to develop in receptive, productive and interactive skills.

At HL the study of two literary works originally written in the target language is required and students are expected to extend the range and complexity of the language they use and understand in order to communicate. Students continue to develop their knowledge of vocabulary and grammar, as well as their conceptual understanding of how language works, in order to construct, analyse and evaluate arguments on a variety of topics relating to course content and the target language culture(s).

Aims

The following language acquisition aims are common to both Language ab initio and Language B.

- Develop international-mindedness through the study of languages, cultures, and ideas and issues of global significance.
- Enable students to communicate in the language they have studied in a range of contexts and for a variety of purposes.
- Encourage, through the study of texts and through social interaction, an awareness and appreciation of a variety of perspectives of people from diverse cultures.
- Develop students' understanding of the relationship between the languages and cultures with which they are familiar.
- Develop students' awareness of the importance of language in relation to other areas of knowledge.
- Provide students, through language learning and the process of inquiry, with opportunities for intellectual engagement and the development of critical- and creative-thinking skills.

Group 2: Language B (continued)

Assessment at a Glance

EXTERNAL/ INTERNAL	TYPE OF ASSESSMENT	WEIGHING OF FINAL GRADE	
		STANDARD LEVEL (SL)	HIGHER LEVEL (HL)
EXTERNAL	PAPER 1 (PRODUCTIVE SKILLS)	25%	25%
	PAPER 2 (RECEPTIVE SKILLS)		
	LISTENING READING	25% 25%	25% 25%
INTERNAL	INDIVIDUAL ORAL ASSESSMENT	25%	25%

Courses offered at St. Mary's

COURSE	LEVEL
JAPANESE B	STANDARD, HIGHER
FRENCH B	STANDARD, HIGHER



Group 2: Language ab initio

Courses offered at St. Mary's

Language acquisition consists of two modern language courses – Language ab initio and Language B – designed to provide students with the necessary skills and intercultural understanding to enable them to communicate successfully in an environment where the language studied is spoken.

Offered at SL only, Language ab initio is a language acquisition course designed for students with no previous experience in – or very little exposure to – the target language. Language ab initio students develop their receptive, productive and interactive skills while learning to communicate in the target language in familiar and unfamiliar contexts. Students develop the ability to communicate through the study of language, themes and texts. There are five prescribed themes: identities, experiences, human ingenuity, social organization and sharing the planet. While the themes are common to both language ab initio and language B, the language ab initio syllabus additionally prescribes four topics for each of the five themes, for a total of 20 topics that must be addressed over the two years of the course.

Aims

- The following language acquisition aims are common to both Language ab initio and Language B.
- Develop international-mindedness through the study of languages, cultures, and ideas and issues of global significance.
 - Enable students to communicate in the language they have studied in a range of contexts and for a variety of purposes.
 - Encourage, through the study of texts and through social interaction, an awareness and appreciation of a variety of perspectives of people from diverse cultures.
 - Develop students’ understanding of the relationship between the languages and cultures with which they are familiar.
 - Develop students’ awareness of the importance of language in relation to other areas of knowledge.
 - Provide students, through language learning and the process of inquiry, with opportunities for intellectual engagement and the development of critical- and creative-thinking skills.
 - Provide students with a basis for further study, work and leisure through the use of an additional language.
 - Foster curiosity, creativity and a lifelong enjoyment of language learning.

Assessment at a Glance

EXTERNAL/INTERNAL	TYPE OF ASSESSMENT	WEIGHING OF FINAL GRADE
		STANDARD LEVEL (SL)
EXTERNAL	PAPER 1 (PRODUCTIVE SKILLS)	25%
	PAPER 2 (RECEPTIVE SKILLS)	
	LISTENING READING	25% 25%
INTERNAL	INDIVIDUAL ORAL ASSESSMENT	25%

Courses offered at St. Mary's

COURSE	LEVEL
JAPANESE AB INITIO	STANDARD
FRENCH AB INITIO	STANDARD



GROUP THREE

INDIVIDUALS AND SOCIETIES

Group 3: Economics

Course Description

Economics is an exciting, dynamic subject that allows students to develop an understanding of the complexities and interdependence of economic activities in a rapidly changing world. At the heart of economic theory is the problem of scarcity. Owing to scarcity, choices have to be made. The economics course, at both SL and HL, uses economic theories, models and key concepts to examine the ways in which these choices are made: at the level of producers and consumers in individual markets (microeconomics); at the level of the government and the national economy (macroeconomics); and at an international level, where countries are becoming increasingly interdependent (the global economy). The DP Economics course allows students to explore these models, theories and key concepts, and apply them, using empirical data, through the examination of six real-world issues. Through their own inquiry, students will be able to appreciate both the values and limitations of economic models in explaining real-world economic behaviour and outcomes. By focusing on the six real-world issues through the nine key concepts (scarcity, choice, efficiency, equity, economic well-being, sustainability, change, interdependence and intervention), students of the economics course will develop the knowledge, skills, values and attitudes that will encourage them to act responsibly as global citizens.

Aims

The aims of the DP economics course are to enable students to:

- develop a critical understanding of a range of economic theories, models, ideas and tools in the areas of microeconomics, macroeconomics and the global economy
- apply economic theories, models, ideas and tools, and analyse economic data to understand and engage with real-world economic issues and problems facing individuals and societies
- develop a conceptual understanding of individuals' and societies' economic choices, interactions, challenges and consequences of economic decision-making.

Assessment at a Glance

EXTERNAL/ INTERNAL	TYPE OF ASSESSMENT	WEIGHING OF FINAL GRADE	
		STANDARD LEVEL (SL)	HIGHER LEVEL (HL)
EXTERNAL	PAPER 1	30%	20%
	PAPER 2	40%	30%
	PAPER 3	-	30%

Courses offered at St. Mary's

COURSE	LEVEL
ECONOMICS	STANDARD, HIGHER

Group 3: History

Course Description

The DP History course is a world history course based on a comparative and multi-perspective approach to history. It involves the study of a va-riety of types of history, including political, economic, social and cultural, and provides a balance of structure and flexibility. The course emphasizes the importance of encouraging students to think historically and to develop historical skills as well as gaining factual knowledge. It puts a premium on developing the skills of critical thinking, and on developing an understanding of multiple interpretations of history. In this way, the course involves a challenging and demanding critical exploration of the past. Teachers explicitly teach thinking and research skills such as comprehension, text analysis, transfer, and use of primary sources. There are six key concepts that have particular prominence throughout the DP History course: change, continuity, causation, consequence, sig-nificance and perspectives.

Aims

- The aims of the DP History course are to enable students to:
- develop an understanding of, and continuing interest in, the past
 - encourage students to engage with multiple perspectives and to appreciate the complex nature of historical concepts, issues, events and developments
 - promote international-mindedness through the study of history from more than one region of the world
 - develop an understanding of history as a discipline and to develop historical consciousness including a sense of chronology and context, and an understanding of different historical perspectives
 - develop key historical skills, including engaging effectively with sources
 - increase students’ understanding of themselves and of contemporary society by encouraging reflection on the past.

Assessment at a Glance

EXTERNAL/ INTERNAL	TYPE OF ASSESSMENT	WEIGHING OF FINAL GRADE	
		STANDARD LEVEL (SL)	HIGHER LEVEL (HL)
EXTERNAL	PAPER 1	30%	20%
	PAPER 2	45%	25%
	PAPER 3	–	35%
INTERNAL	PORTFOLIO	25%	20%

Courses offered at St. Mary's

COURSE	LEVEL
HISTORY	STANDARD, HIGHER

Group 3: Business Management

Course Description

The business management course is designed to develop students’ knowledge and understanding of business management theories, as well as their ability to apply a range of tools and techniques. Students learn to analyse, discuss and evaluate business activities at local, national and international levels. The course covers a range of organizations from all sectors, as well as the sociocultural and economic contexts in which those organizations operate. The course covers the key characteristics of business organization and environment, and the business functions of human resource management, finance and accounts, marketing and operations management. Through the exploration of six underpinning concepts (change, culture, ethics, globalization, innovation and strategy), the course allows students to develop a holistic understanding of today’s complex and dynamic business environment. The conceptual learning is firmly anchored in business management theories, tools and techniques and placed in the context of real world examples and case studies. The course encourages the appreciation of ethical concerns, at both a local and global level. It aims to develop relevant and transferable skills, including the ability to: think critically; make ethically sound and well-informed decisions; appreciate the pace, nature and significance of change; think strategically; and undertake long term planning, analysis and evaluation. The course also develops subject-specific skills, such as financial analysis.

Aims

- The aims of the Business Management course at HL and SL are to:
1. encourage a holistic view of the world of business
 2. empower students to think critically and strategically about individual and organizational behaviour
 3. promote the importance of exploring business issues from different cultural perspectives
 4. enable the student to appreciate the nature and significance of change in a local, regional and global context
 5. promote awareness of the importance of environmental, social and ethical factors in the actions of individuals and organizations
 6. develop an understanding of the importance of innovation in a business environment.

Assessment at a Glance

EXTERNAL/ INTERNAL	TYPE OF ASSESSMENT	WEIGHING OF FINAL GRADE	
		STANDARD LEVEL (SL)	HIGHER LEVEL (HL)
EXTERNAL	PAPER 1	35%	35%
	PAPER 2	40%	40%
INTERNAL	RESEARCH PROJECT		25%
	WRITTEN COMMENTARY	25%	–

Courses offered at St. Mary's

COURSE	LEVEL
BUSINESS MANAGEMENT	STANDARD, HIGHER



GROUP FOUR

SCIENCES

Group 4: Biology

Course Description

Biology is the study of life. The vast diversity of species makes biology both an endless source of fascination and a considerable challenge. Biologists attempt to understand the living world at all levels from the micro to the macro using many different approaches and techniques. Biology is still a young science and great progress is expected in the 21st century. This progress is important at a time of growing pressure on the human population and the environment.

By studying biology in the DP students should become aware of how scientists work and communicate with each other. While the scientific method may take on a wide variety of forms, it is the emphasis on a practical approach through experimental work that characterizes the sciences. Teachers provide students with opportunities to design investigations, collect data, develop manipulative skills, analyse results, collaborate with peers and evaluate and communicate their findings.

Aims

Through the overarching theme of the nature of science, the aims of the DP Biology course are to enable students to:

- appreciate scientific study and creativity within a global context through stimulating and challenging opportunities
- acquire a body of knowledge, methods and techniques that characterize science and technology
- apply and use a body of knowledge, methods and techniques that characterize science and technology
- develop an ability to analyse, evaluate and synthesize scientific information
- develop a critical awareness of the need for, and the value of, effective collaboration and communication during scientific activities
- develop experimental and investigative scientific skills including the use of current technologies
- develop and apply 21st century communication skills in the study of science
- become critically aware, as global citizens, of the ethical implications of using science and technology
- develop an appreciation of the possibilities and limitations of science and technology
- develop an understanding of the relationships between scientific disciplines and their influence on other areas of knowledge.

Assessment at a Glance

EXTERNAL/ INTERNAL	TYPE OF ASSESSMENT	WEIGHING OF FINAL GRADE	
		STANDARD LEVEL (SL)	HIGHER LEVEL (HL)
EXTERNAL	PAPER 1	20%	20%
	PAPER 2	40%	36%
	PAPER 3	20%	24%
INTERNAL	INDIVIDUAL INVESTIGATION	20%	20%

Courses offered at St. Mary's

COURSE	LEVEL
BIOLOGY	STANDARD, HIGHER

Group 4: Chemistry

Courses Description

Chemistry is an experimental science that combines academic study with the acquisition of practical and investigational skills. Chemical principles underpin both the physical environment in which we live and all biological systems. Chemistry is often a prerequisite for many other courses in higher education, such as medicine, biological science and environmental science.

Both theory and practical work should be undertaken by all students as they complement one another naturally, both in school and in the wider scientific community. The DP Chemistry course allows students to develop a wide range of practical skills and to increase facility in the use of mathematics. It also allows students to develop interpersonal and information technology skills, which are essential to life in the 21st century.

By studying chemistry students should become aware of how scientists work and communicate with each other. While the scientific method may take on a wide variety of forms, it is the emphasis on a practical approach through experimental work that characterizes the subject. Teachers provide students with opportunities to develop manipulative skills, design investigations, collect data, analyse results and evaluate and communicate their findings.

Aims

- Through the overarching theme of the nature of science, the aims of the DP Chemistry course are to enable students to:
- appreciate scientific study and creativity within a global context through stimulating and challenging opportunities
 - acquire a body of knowledge, methods and techniques that characterize science and technology
 - apply and use a body of knowledge, methods and techniques that characterize science and technology
 - develop an ability to analyse, evaluate and synthesize scientific information
 - develop a critical awareness of the need for, and the value of, effective collaboration and communication during scientific activities
 - develop experimental and investigative scientific skills including the use of current technologies
 - develop and apply 21st century communication skills in the study of science
 - become critically aware, as global citizens, of the ethical implications of using science and technology
 - develop an appreciation of the possibilities and limitations of science and technology
 - develop an understanding of the relationships between scientific disciplines and their influence on other areas of knowledge.

Assessment at a Glance

EXTERNAL/ INTERNAL	TYPE OF ASSESSMENT	WEIGHING OF FINAL GRADE	
		STANDARD LEVEL (SL)	HIGHER LEVEL (HL)
EXTERNAL	PAPER 1	20%	20%
	PAPER 2	40%	35%
	PAPER 3	20%	24%
INTERNAL	INDIVIDUAL INVESTIGATION	20%	20%

Courses offered at St. Mary's

COURSE	LEVEL
CHEMISTRY	STANDARD, HIGHER

Group 4: Physics

Courses Description

Physics is the most fundamental of the experimental sciences as it seeks to explain the universe itself, from the very smallest particles to the vast distances between galaxies. Despite the exciting and extraordinary development of ideas throughout the history of physics, observations remain essential to the very core of the subject. Models are developed to try to understand observations, and these themselves can become theories that attempt to explain the observations. Besides helping us better understand the natural world, physics gives us the ability to alter our environments. This raises the issue of the impact of physics on society, the moral and ethical dilemmas, and the social, economic and environmental implications of the work of physicists.

By studying physics students should become aware of how scientists work and communicate with each other. While the scientific method may take on a wide variety of forms, it is the emphasis on a practical approach through experimental work that characterizes the subject. Teachers provide students with opportunities to develop manipulative skills, design investigations, collect data, analyse results and evaluate and communicate their findings.

Aims

- Through the overarching theme of the nature of science, the aims of the DP physics course are to enable students to:
- appreciate scientific study and creativity within a global context through stimulating and challenging opportunities
 - acquire a body of knowledge, methods and techniques that characterize science and technology
 - apply and use a body of knowledge, methods and techniques that characterize science and technology
 - develop an ability to analyse, evaluate and synthesize scientific information
 - develop a critical awareness of the need for, and the value of, effective collaboration and communication during scientific activities
 - develop experimental and investigative scientific skills including the use of current technologies
 - develop and apply 21st century communication skills in the study of science
 - become critically aware, as global citizens, of the ethical implications of using science and technology
 - develop an appreciation of the possibilities and limitations of science and technology
 - develop an understanding of the relationships between scientific disciplines and their influence on other areas of knowledge.

Assessment at a Glance

EXTERNAL/ INTERNAL	TYPE OF ASSESSMENT	WEIGHING OF FINAL GRADE	
		STANDARD LEVEL (SL)	HIGHER LEVEL (HL)
EXTERNAL	PAPER 1	20%	20%
	PAPER 2	40%	36%
	PAPER 3	20%	24%
INTERNAL	INDIVIDUAL INVESTIGATION	20%	20%

Courses offered at St. Mary's

COURSE	LEVEL
PHYSICS	STANDARD, HIGHER

Group 4: Design Technology

Courses Description

The Diploma Programme Design Technology course aims to develop internationally minded people whose enhanced understanding of design and the technological world can facilitate our shared guardian-ship of the planet and create a better world.

Inquiry and problem-solving are at the heart of the subject. DP Design Technology requires the use of the design cycle as a tool, which provides the methodology used to structure the inquiry and analysis of problems, the development of feasible solutions, and the testing and evaluation of the solution. A solution can be defined as a model, proto-type, product or system that students have developed independently.

DP Design Technology achieves a high level of design literacy by enabling students to develop critical-thinking and design skills, which they can apply in a practical context. While designing may take various forms, it will involve the selective application of knowledge within an ethical framework.

Aims

Through the overarching theme of the nature of design, the aim of the DP Design Technology course is to enable students to develop:

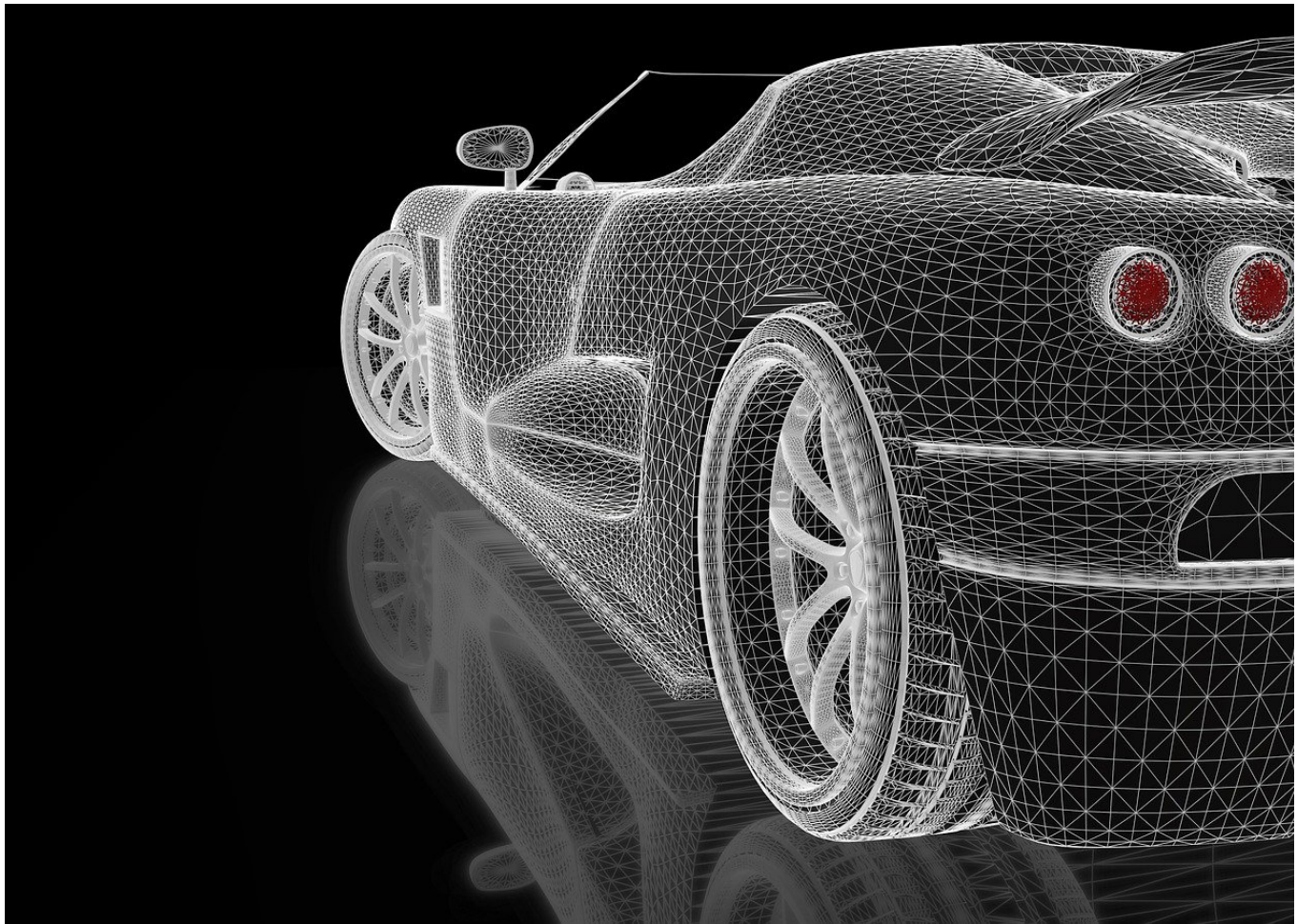
1. a sense of curiosity as they acquire the skills necessary for independent and lifelong learning and action through inquiry into the technological world around them
2. an ability to explore concepts, ideas and issues with personal, local and global significance to acquire in-depth knowledge and understanding of design and technology
3. initiative in applying thinking skills critically and creatively to identify and resolve complex social and technological problems through reasoned ethical decision-making
4. an ability to understand and express ideas confidently and creatively using a variety of communication techniques through collaboration with others
5. a propensity to act with integrity and honesty, and take responsibility for their own actions in designing technological solutions to problems
6. an understanding and appreciation of cultures in terms of global technological development, seeking and evaluating a range of perspectives
7. a willingness to approach unfamiliar situations in an informed manner and explore new roles, ideas and strategies to confidently articulate and defend proposals
8. an understanding of the contribution of design and technology to the promotion of intellectual, physical and emotional balance and the achievement of personal and social well-being
9. empathy, compassion and respect for the needs and feelings of others in order to make a positive difference to the lives of others and to the environment
10. skills that enable them to reflect on the impacts of design and technology on society and the environment in order to develop their own learning and enhance solutions to technological problems.

Assessment at a Glance

EXTERNAL/ INTERNAL	TYPE OF ASSESSMENT	WEIGHING OF FINAL GRADE	
		STANDARD LEVEL (SL)	HIGHER LEVEL (HL)
EXTERNAL	PAPER 1	30%	20%
	PAPER 2	30%	20%
	PAPER 3	-	20%
INTERNAL	DESIGN PROJECT	40%	40%

Courses offered at St. Mary's

COURSE	LEVEL
DESIGN TECHNOLOGY	STANDARD, HIGHER



Group 4: Computer Science

Courses Description

The IB DP Computer Science SL/HL course requires an understanding of the fundamental concepts of computational thinking as well as knowledge of how computers and other digital devices operate. The course, underpinned by conceptual thinking, draws on a wide spectrum of knowledge, and enables and empowers innovation, exploration and the acquisition of further knowledge. Students study how computer science interacts with and influences cultures, society and how individuals and societies behave, and the ethical issues involved.

During the course the student will develop computational solutions. This will involve the ability to:

- identify a problem or unanswered question
- design, prototype and test a proposed solution
- liaise with clients to evaluate the success of the proposed solution and make recommendations for future developments.

Aims

The aims of the Computer Science standard/higher level courses are to:

- provide opportunities for study and creativity within a global context that will stimulate and challenge students developing the skills necessary for independent and lifelong learning
- provide a body of knowledge, methods and techniques that characterize computer science
- enable students to apply and use a body of knowledge, methods and techniques that characterize computer science III. Assessment model IV. Sample questions
- demonstrate initiative in applying thinking skills critically to identify and resolve complex problems
- engender an awareness of the need for, and the value of, effective collaboration and communication in resolving complex problems
- develop logical and critical thinking as well as experimental, investigative and problem-solving skills
- develop and apply the students' information and communication technology skills in the study of computer science to communicate information confidently and effectively
- raise awareness of the moral, ethical, social, economic and environmental implications of using science and technology
- develop an appreciation of the possibilities and limitations associated with continued developments in IT systems and computer science
- encourage an understanding of the relationships between scientific disciplines and the overarching nature of the scientific method.

Assessment at a Glance

EXTERNAL/ INTERNAL	TYPE OF ASSESSMENT	WEIGHING OF FINAL GRADE	
		STANDARD LEVEL (SL)	HIGHER LEVEL (HL)
EXTERNAL	PAPER 1	45%	40%
	PAPER 2	25%	20%
	PAPER 3	–	20%
INTERNAL	WRITTEN COMMENTARY	–	20%
	SOLUTION	30%	–

Courses offered at St. Mary's

COURSE	LEVEL
COMPUTER SCIENCE	STANDARD, HIGHER





GROUP FIVE

MATHEMATICS

Group 5: Mathematics: Analysis and Approaches

Courses Description

Individual students have different needs, aspirations, interests and abilities. For this reason there are two different DP subjects in mathematics, Mathematics: Analysis and Approaches and Mathematics: Applications and Interpretation. Each course is designed to meet the needs of a particular group of students. Both courses are offered at SL and HL.

The IB DP Mathematics: Analysis and Approaches course recognizes the need for analytical expertise in a world where innovation is increasingly dependent on a deep understanding of mathematics. The focus is on developing important mathematical concepts in a comprehensible, coherent and rigorous way, achieved by a carefully balanced approach. Students are encouraged to apply their mathematical knowledge to solve abstract problems as well as those set in a variety of meaningful contexts. Mathematics: analysis and approaches has a strong emphasis on the ability to construct, communicate and justify correct mathematical arguments. Students should expect to develop insight into mathematical form and structure, and should be intellectually equipped to appreciate the links between concepts in different topic areas. Students are also encouraged to develop the skills needed to continue their mathematical growth in other learning environments. The internally assessed exploration allows students to develop independence in mathematical learning. Throughout the course students are encouraged to take a considered approach to various mathematical activities and to explore different mathematical ideas.

Aims

The aims of all DP mathematics courses are to enable students to:

- develop a curiosity and enjoyment of mathematics, and appreciate its elegance and power
- develop an understanding of the concepts, principles and nature of mathematics
- communicate mathematics clearly, concisely and confidently in a variety of contexts
- develop logical and creative thinking, and patience and persistence in problem solving to instil confidence in using mathematics
- employ and refine their powers of abstraction and generalization
- take action to apply and transfer skills to alternative situations, to other areas of knowledge and to future developments in their local and global communities
- appreciate how developments in technology and mathematics influence each other
- appreciate the moral, social and ethical questions arising from the work of mathematicians and the applications of mathematics
- appreciate the universality of mathematics and its multicultural, international and historical perspectives
- appreciate the contribution of mathematics to other disciplines, and as a particular “area of knowledge” in the TOK course
- develop the ability to reflect critically upon their own work and the work of others
- independently and collaboratively extend their understanding of mathematics.

Group 5: Mathematics: Applications and Interpretation

Courses Description

Individual students have different needs, aspirations, interests and abilities. For this reason there are two different DP subjects in mathematics, Mathematics: Analysis and Approaches and Mathematics: Applications and Interpretation. Each course is designed to meet the needs of a particular group of students. Both courses are offered at SL and HL.

The IB DP Mathematics: Applications and Interpretation course recognizes the increasing role that mathematics and technology play in a diverse range of fields in a data-rich world. As such, it emphasizes the meaning of mathematics in context by focusing on topics that are often used as applications or in mathematical modelling. To give this understanding a firm base, this course includes topics that are traditionally part of a pre-university mathematics course such as calculus and statistics. Students are encouraged to solve real-world problems, construct and communicate this mathematically and interpret the conclusions or generalizations.

Students should expect to develop strong technology skills, and will be intellectually equipped to appreciate the links between the theoretical and the practical concepts in mathematics. All external assessments involve the use of technology. Students are also encouraged to develop the skills needed to continue their mathematical growth in other learning environments.

The internally assessed exploration allows students to develop independence in mathematical learning. Throughout the course students are encouraged to take a considered approach to various mathematical activities and to explore different mathematical ideas.

Aims

The aims of all DP mathematics courses are to enable students to:

- develop a curiosity and enjoyment of mathematics, and appreciate its elegance and power
- develop an understanding of the concepts, principles and nature of mathematics
- communicate mathematics clearly, concisely and confidently in a variety of contexts
- develop logical and creative thinking, and patience and persistence in problem solving to instil confidence in using mathematics
- employ and refine their powers of abstraction and generalization
- take action to apply and transfer skills to alternative situations, to other areas of knowledge and to future developments in their local and global communities
- appreciate how developments in technology and mathematics influence each other
- appreciate the moral, social and ethical questions arising from the work of mathematicians and the applications of mathematics
- appreciate the universality of mathematics and its multicultural, international and historical perspectives
- appreciate the contribution of mathematics to other disciplines, and as a particular “area of knowledge” in the TOK course
- develop the ability to reflect critically upon their own work and the work of others
- independently and collaboratively extend their understanding of mathematics.

Assessment at a Glance

EXTERNAL/ INTERNAL	TYPE OF ASSESSMENT	WEIGHING OF FINAL GRADE	
		STANDARD LEVEL (SL)	HIGHER LEVEL (HL)
EXTERNAL	PAPER 1	40%	30%
	PAPER 2	40%	30%
	PAPER 3	–	20%
INTERNAL	INDIVIDUAL INVESTIGATION	20%	20%

Courses offered at St. Mary's

COURSE	LEVEL
MATHEMATICS: ANALYSIS AND APPROACHES	STANDARD, HIGHER
MATHEMATICS: APPLICATIONS AND INTERPRETATION	STANDARD, HIGHER





GROUP SIX

ARTS

Group 6: Music

Courses Description

The Diploma Programme Music course (for first teaching from 2020) has been designed to prepare the 21st century music student for a world in which global musical cultures and industries are rapidly changing.

The course is grounded in the knowledge, skills and processes associated with the study of music and offers a strengthened approach to student creativity through practical, informed and purposeful explorations of diverse musical forms, practices and contexts. The course also ensures a holistic approach to learning, with the roles of performer, creator and researcher afforded equal importance in all course components.

Aims

The aims of the music course are to enable students to:

- explore a range of musical contexts and make links to, and between, different musical practices, conventions and forms of expression
- acquire, develop and experiment with musical competencies through a range of musical practices, conventions and forms of expression, both individually and in collaboration with others
- evaluate and develop critical perspectives on their own music and the work of others

Assessment at a Glance

EXTERNAL/ INTERNAL	TYPE OF ASSESSMENT	WEIGHING OF FINAL GRADE	
		STANDARD LEVEL (SL)	HIGHER LEVEL (HL)
EXTERNAL	EXPLORING MUSIC IN CONTEXT	30%	20%
	PRESENTING MUSIC	40%	30%
INTERNAL	EXPERIMENTING WITH MUSIC	30%	20%
	THE CONTEMPORARY MUSIC- MAKER	-	30%

Course Offerings at St. Mary's

COURSE	LEVEL
MUSIC	STANDARD, HIGHER

Group 6: Art

Courses Description

The IB Diploma Programme Visual Arts course encourages students to challenge their own creative and cultural expectations and boundaries. It is a thought-provoking course in which students develop analytical skills in problem-solving and divergent thinking, while working towards technical proficiency and confidence as art-makers. In addition to exploring and comparing visual arts from different perspectives and in different contexts, students are expected to engage in, experiment with and critically reflect upon a wide range of contemporary practices and media. The course is designed for students who want to go on to study visual arts in higher education as well as for those who are seeking lifelong enrichment through visual arts.

The role of visual arts teachers should be to actively and carefully organize learning experiences for the students, directing their study to enable them to reach their potential and satisfy the demands of the course. Students should be empowered to become autonomous, informed and skilled visual artists.

Aims

The aims of the arts subjects are to enable students to:

- enjoy lifelong engagement with the arts
- become informed, reflective and critical practitioners in the arts
- understand the dynamic and changing nature of the arts
- explore and value the diversity of the arts across time, place and cultures
- express ideas with confidence and competence
- develop perceptual and analytical skills.

In addition, the aims of the visual arts course at SL and HL are to enable students to:

- make artwork that is influenced by personal and cultural contexts
- become informed and critical observers and makers of visual culture and media
- develop skills, techniques and processes in order to communicate concepts and ideas.

Assessment at a Glance

EXTERNAL/ INTERNAL	TYPE OF ASSESSMENT	WEIGHING OF FINAL GRADE	
		STANDARD LEVEL (SL)	HIGHER LEVEL (HL)
EXTERNAL	COMPARATIVE STUDY	20%	20%
	PROCESS PORTFOLIO	40%	40%
INTERNAL	EXHIBITION	40%	40%

Courses offered at St. Mary's

COURSE	LEVEL
VISUAL ARTS	STANDARD, HIGHER

Useful Links

[International Baccalaureate Organization](#)

[International Baccalaureate: Subject Briefs](#)

[Japanese Universities with IB diploma track](#) (Japanese)



(UPDATED OCTOBER 2021)



**ST. MARY'S
INTERNATIONAL
SCHOOL**

**Nurturing, Challenging and Connecting
all Hearts and Minds**