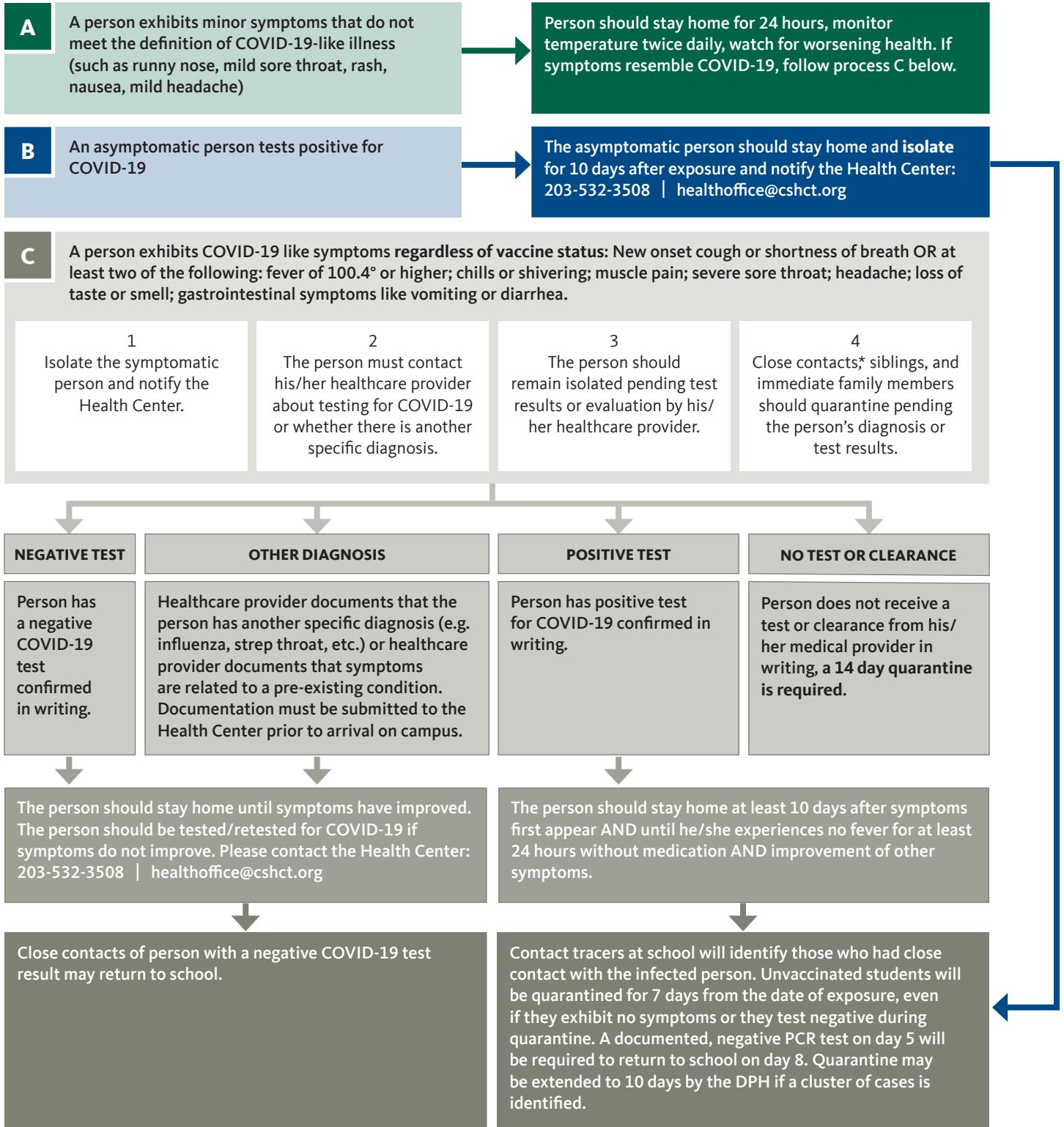


COVID-19 Quarantine and Isolation Procedures

Please use this flowchart for guidance if/when your student becomes ill during the 2021-2022 school year. This flowchart should be used to guide next steps for families with an ill child regardless of vaccine status. Please complete the confidential Student Absence Tracker in the Parent Portal for each day of absence. The Greenwich Department of Health will be consulted for quarantine requirements on a case by case basis.

Health Center: 203-532-3508 | healthoffice@csht.org



* Close contact for unvaccinated students is defined as being less than 6 ft. apart for 15 minutes or more **regardless of masking** in a 24 hour period. The quarantine period is 7 days (return on day 8) and a student must have a negative PCR test on day 5. No home tests or rapid antigens tests will be accepted. Students with documented antibodies from prior infection with COVID-19 are only exempt from quarantine for 90 days after initial infection.