



COVID-19 Health and Safety Protocols Updates

October 28, 2021



Health and Safety Updates

As state and local COVID-19 regulations evolve, Wiseburn's COVID-19 health and safety protocols continue to adapt.

Most crucially, we've implemented updated guidance in the following areas:

1. Vaccines
2. COVID-19 Testing
3. Close Contact and Quarantine Procedures





Vaccines

89.1%

of 12-17 year olds in the Unincorporated Wiseburn community have been vaccinated, [per LADPH](#) data through 10/26/2021



Vaccines

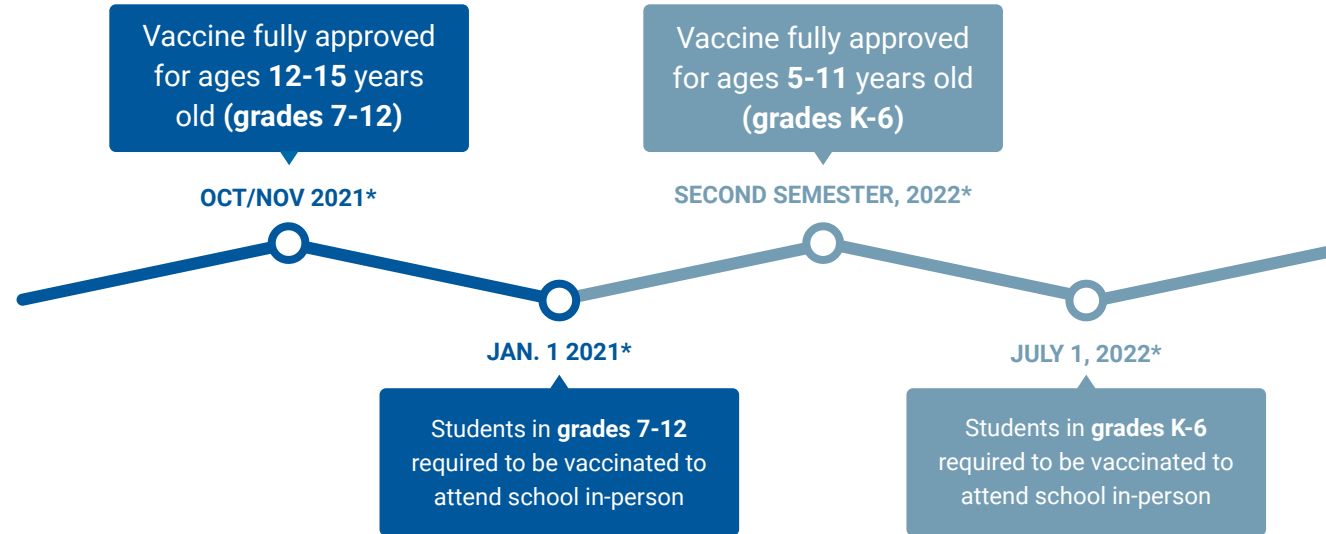
- On Oct. 1, 2021: Gov. Gavin Newsom announced that **all elementary through high school students will be required to get the COVID-19 vaccine once it gains final approval** from the U.S. government for different age groups
 - Currently, the status of each age group's safety approval of the vaccine is as follows:
 - **Ages 16+:** Vaccine fully approved following rigorous safety testing process
 - **Ages 12 - 15:** Vaccine approved for emergency authorization
 - **Ages 5 - 11:** FDA independent advisors have recommended that the agency issue an emergency use authorization; we expect more news in the coming week
 - This mandate will be a condition of in-person instruction, similar to measles, mumps, and rubella vaccinations
 - A student who is not vaccinated may remain enrolled in independent study, but may not attend in-person instruction
 - The Governor has also directed that adults be held to at least the same standards as students for the COVID-19 vaccine
 - All staff will be required to be vaccinated no later than when the first phase of the student requirement becomes effective
-



Tentative Timing of Mandate

Example timeline:

- The mandate may take effect at the start of the term (defined as Jan. 1 or July 1) following full approval of that grade span (spans: grades K-6, and grades 7-12)
- Currently, we expect the requirement will not take place until 2022
- LADPH may decide to implement a mandate sooner. Districts may also move forward with their own mandate sooner



**Represents potential timelines, not confirmed dates*



Additional Details

- Students who are under the age of full approval, but within the grade span, will be required to be vaccinated once they reach the age of full approval (with a reasonable period of time to receive both doses), consistent with existing procedures for other vaccines
 - Current law provides:
 - 1) That 10 currently-mandated vaccines are required prior to a student's "first admission" to a given school, subject only to a narrow medical exemption; and
 - 2) That additional vaccines (including COVID-19 vaccines) may be required by CDPH only prior to a student's first enrollment in a school, and are subject to a broad personal belief exemption (as well as a narrow medical exemption)
 - Assuming the Governor's intent is to require COVID-19 vaccination for all K-12 students and employees, and on a quicker timeline than established by current law, additional action in the form of an Executive Order or Legislative enactment will likely be required
-



Wiseburn Pfizer 12+ Vaccination Clinics

- In partnership with Fulgent and Wiseburn Education Foundation, Wiseburn has begun offering **vaccination clinics** to our community
 - First dose clinic: 9/24
 - Second dose clinic (and booster shots): 10/15
- We continue to look into additional vaccination clinic opportunities





Upcoming Pediatric Vaccination Clinics

- In the next week, we may see federal government agencies issuing a long-awaited emergency authorization for children ages 5-11 to receive the COVID-19 vaccine.
 - Per demand from our families and for their convenience, we've coordinated with our partners at Fulgent and Wiseburn Education Foundation to host two pediatric vaccination clinics:
 - **Vaccine clinic option 1**
 - Dose 1 – Tuesday, November 9 from 12 - 6:30 p.m. at Dana
 - Dose 2 – Tuesday, November 30 from 12 - 6:30 p.m. at Dana
 - **Vaccine clinic option 2**
 - Dose 1 – Thursday, November 18 from 12 - 6:30 p.m. at Dana
 - Dose 2 – Thursday, December 9 from 12 - 6:30 p.m. at Dana
 - The administered vaccine will be a Pfizer vaccine. The dosage will be a third of the dose administered to adults, however there still will be two doses administered three weeks apart just as with the Pfizer 12+ vaccine.
 - The registration link is coming soon and will be sent to families.
-



Timeline: Upcoming Pediatric Vaccination Clinics

Sun	Mon	Tue	Wed	Thu	Fri	Sat
November						
31	1	2	3	4	5	6
	Tentative: Government issues emergency authorization for pediatric (5-11 years old) vaccine					
		COVID-19 Testing		COVID-19 Testing		
7	8	9 Clinic 1: Dose 1	10	11	12	13
		COVID-19 Testing		COVID-19 Testing		
14	15	16	17	18 Clinic 2: Dose 1	19	20
		COVID-19 Testing		COVID-19 Testing		
21	22	23	24	25	26	27
THANKSGIVING HOLIDAY - NO SCHOOL						
December						
28	29	30 Clinic 1: Dose 2	1	2	3	4
		COVID-19 Testing		COVID-19 Testing		
5	6	7	8	9 Clinic 2: Dose 2	10	11
		COVID-19 Testing		COVID-19 Testing		



COVID-19 Testing



On-campus COVID-19 Testing

- In collaboration with Fulgent, Wiseburn has expanded our on-campus COVID-19 testing capacity.
 - Every Tuesday at Anza (12-6 pm) and Dana (12-6:30 pm)
 - Every Thursday at Cabrillo (12-6 pm) and Dana (12-6:30 pm)
- Wiseburn also has a cache of rapid COVID-19 tests for immediate use during the school day should the need arise.





Close Contact and Quarantine Procedures



Close Contact and Quarantine Procedures

- 9/17/2021: LADPH updated the [COVID-19 Exposure Management Plan Guidance in TK-12 Schools](#) with the following updates:
 - Clarified the definition of a close contact in a TK-12 classroom or school group.
 - Added an option of modified quarantine for TK-12 students who have verified mask-to-mask exposure with a confirmed case at school during the exposure period. Modified quarantine may only be applied under specific circumstances during the quarantine period which are outlined in this guidance.
 - Updated the testing requirement for shortened quarantine: quarantine can end after Day 7 if a diagnostic viral test is collected on Day 5 or later from the date of last exposure and tests negative.
-

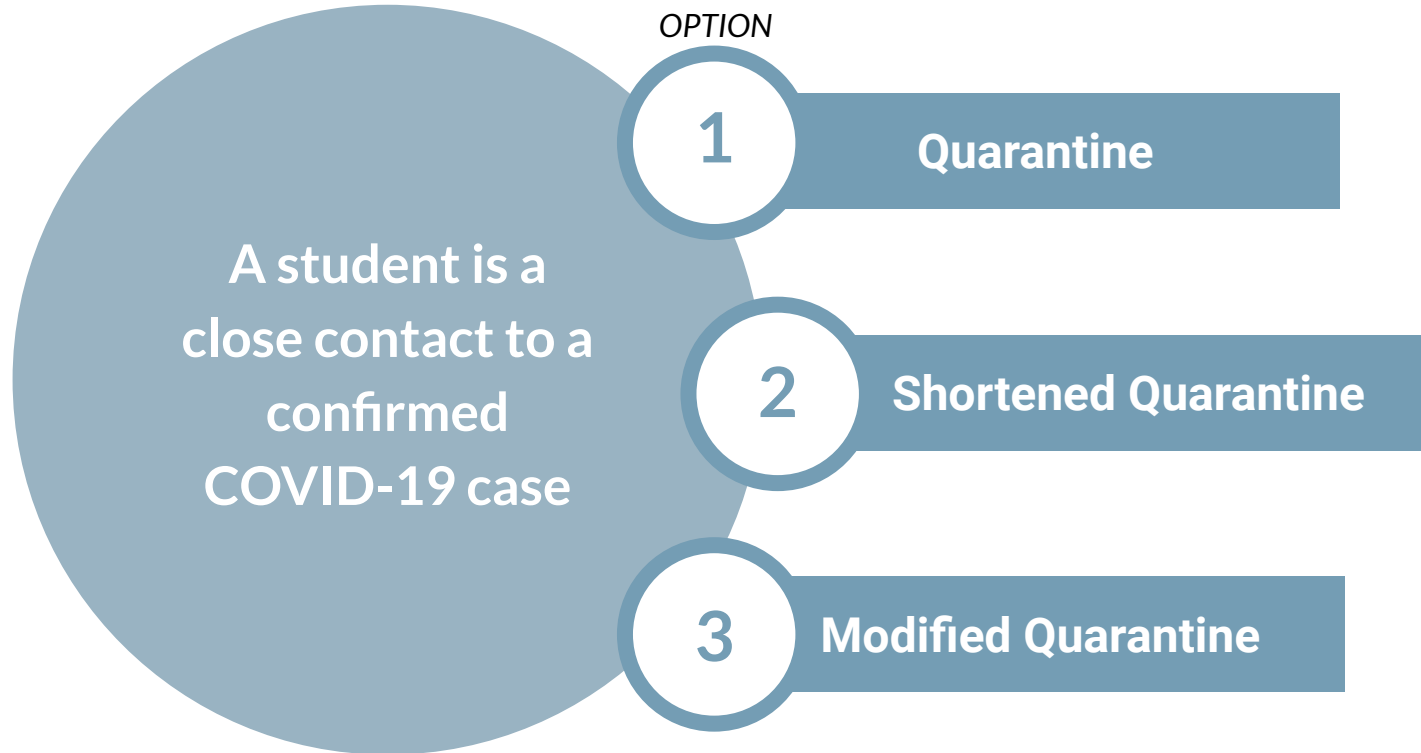


Close Contact and Quarantine Procedures

- Close Contact: A person is considered to have been exposed to a case during the infectious period if at least one of the following criteria are met:
 - Being within 6 feet of the infected person for 15 minutes or more over a 24-hour period.
 - Having had unprotected contact with the infected person's body fluids and/or secretions of a person with confirmed COVID-19 (e.g., being coughed or sneezed on, sharing utensils or saliva, or providing care without using appropriate protective equipment).
 - Individuals in the classroom or school group should NOT be considered a close contact unless the program is reasonably sure that they meet the above definition of a close contact. Individuals should NOT be considered a close contact solely because they were in the same classroom or school group as a person with confirmed COVID-19. If the program cannot determine who is a close contact to a person with confirmed COVID-19 at school, they should contact Public Health immediately for technical assistance.
-



Close Contact Quarantine Procedures





Close Contact Quarantine Procedures

Type	Actions
Quarantine	<p>Close contact is notified and must self quarantine (stay in their home or another residence, separate from others) and monitor for symptoms. As long as they do not develop symptoms of COVID-19 they may end quarantine either:</p> <ul style="list-style-type: none">• After 10 full days have passed from their last known contact to the infectious case. Activities may resume starting on Day 11. They must continue to monitor their health and adhere to COVID-19 prevention precautions through Day 14.



Close Contact Quarantine Procedures

Type	Actions
Shortened Quarantine	<ul style="list-style-type: none">• After 7 full days have passed from their last known contact to the infectious case if they have a negative viral test result from a specimen collected on or after Day 5 from the date of last exposure to the case:<ul style="list-style-type: none">○ Activities may resume starting on Day 8. They must continue to monitor their health and adhere to COVID-19 prevention precautions through Day 14.



Close Contact Quarantine Procedures

Type	Actions
Modified Quarantine	<ul style="list-style-type: none">● Asymptomatic students can continue in-person academic activities that are part of the regular school curriculum and provided during school hours, pending approval for modified quarantine if specific criteria are met. If these criteria cannot be met, then the exposed student must remain in home quarantine.<ul style="list-style-type: none">○ Criteria include: proper use of masks during exposure, COVID testing 2 times per week, and remaining asymptomatic, among other criteria.



Additional Health and Safety Measures



Additional Health and Safety Measures

- We continue to restrict access to District sites to essential visitors only
 - More visitors represent a higher risk, which threatens our ability to keep our schools open. Therefore, we continue to limit visitors to our sites

For additional information on health and safety policies,

please visit our Health and Safety webpage at:

bit.ly/wusd-healthandsafety
