

# Killingly Public Schools

## Achievement Data



2020-2021

## What is the district's **mission statement**?

It is the mission of the Killingly Public Schools to improve the quality of life and self esteem of all students. It will do so by:

1. Creating and maintaining an enthusiastic educational environment;
2. Challenging all students to achieve at their highest level;
3. Fostering respect for human differences;
4. Adjusting to an ever-changing world; and
5. Maintaining a partnership with the community.

## What is the district's **vision statement**?

The District's Vision Statement is set forth as the "Philosophy" which underlies its Mission. The Philosophy – as defined by the Board of Education - is as follows:

"The Board believes that the educational process in our schools should be supported by educators, students, parents/guardians, and the entire community, for a commitment to today's education is a commitment to society's future."

What are the district's core **beliefs or values**?

Killingly Public Schools believe that in our democratic society each person, without exception, is an important resource to our nation. We further believe that is the primary function of our schools to develop this resource to the greatest extent possible.

Our Schools must provide challenges and experiences, which continually foster the development of students' academic competencies, interests, abilities, and attitudes. Equipped with motivation skills, knowledge and values, individuals will be prepared to realize personal success and responsible citizenship.

# Board of Education Goals

Approved: 3/27/2019

## **Goal #1: Academic Achievement**

- A. Create a proficiency based learning system, ensuring equitable achievement opportunities for all students.
- B. Bring to life the KPS portrait of a graduate with students, staff, families and the community, ensuring all students are prepared for life success.

## **Goal #2: Talent Development**

KPS will recruit and retain highly effective professionals who are collaborative, respectful, supportive, reflective critical thinkers with an ability to connect to our student body.

## **Goal #3: Organizational Systems**

- A. Update facilities to provide a safe, healthy, adaptable learning environment conducive to student centered teaching and learning for the 21st century.
- B. Ensure Prek-12 students have access to progressive digital learning tools and the skill to utilize them, preparing them for future success.

## **Goal #4: School Culture & Climate**

- A. KPS will provide a safe, healthy and supportive environment for learning where students build resilience through the integration of social, emotional and academic skills.
- B. KPS will cultivate positive student, family, community partnerships that support learning, build pride and recognize the value for education.

**What percent of students are achieving at grade level in  
Reading, Writing, and Mathematics by grade level?**

**How will we measure progress towards each of the BOE  
goals in the coming school year?**

## STAR Reading Assessment 2020-2021

Grade	Number of Students	Fall Scaled Score	Spring Scaled Score	Change		Fall Percentile Rank	Spring Percentile Rank	Change
Second	170	*	243	*		*	34	*
Third	170	*	373	*		*	40	*
Fourth	163	*	459	*		*	36	*
Fifth	151	*	551	*		*	36	*
Sixth	139	*	665	*		*	37	*
Seventh	168	*	720	*		*	35	*
Eighth	175	*	862	*		*	35	*
Ninth	197	*	954	*		*	38	*
Tenth	205	*	1041	*		*	43	*
Eleventh	-	-	-	-		-	-	-
District	1538	*	592	*		*	38	*

\* No STAR testing due to COVID.

## STAR Reading Assessment Comparison 17/18 to 20/21

Grade	Percentile Rank 17/18	Percentile Rank 18/19	Percentile Rank 19/20	Percentile Rank 20/21	Median SGP 20/21
Second	53	54	*	34	*
Third	54	52	*	40	*
Fourth	48	50	*	36	*
Fifth	49	51	*	36	*
Sixth	45	47	*	37	*
Seventh	46	48	*	35	*
Eighth	44	45	*	35	*
Ninth	47	43	*	38	*
Tenth	50	53	*	43	*
Eleventh	48	48	*	-	-
District	48.4	49.1	*	38	*

\* No STAR testing due to COVID.



## STAR Mathematics Assessment 2020-2021

Grade	Number of Students	Fall Scaled Score	Spring Scaled Score	Change	Fall Percentile Rank	Spring Percentile Rank	Change
Second	170	*	466	*	*	36	*
Third	170	*	555	*	*	39	*
Fourth	163	*	615	*	*	36	*
Fifth	151	*	674	*	*	39	*
Sixth	139	*	708	*	*	32	*
Seventh	168	*	743	*	*	35	*
Eighth	175	*	753	*	*	30	*
Ninth	197	*	800	*	*	42	*
Tenth	205	*	815	*	*	48	*
Eleventh	-	-	-	-	-	-	-
District	1538	*	681	*	*	38	*

\*No STAR testing due to COVID.

## STAR Mathematics Assessment Comparison 17/18 to 20/21

Grade	Percentile Rank 17/18	Percentile Rank 18/19	Percentile Rank 19/20	Percentile Rank 20/21	Median SGP 20/21
Second	62	61	*	36	*
Third	62	66	*	39	*
Fourth	64	63	*	37	*
Fifth	53	53	*	39	*
Sixth	56	48	*	32	*
Seventh	52	52	*	35	*
Eighth	49	49	*	30	*
Ninth	52	42	*	42	*
Tenth	52	56	*	48	*
Eleventh	49	46	*	-	-
District	55.1	53.6	*	38	*

\* No STAR testing due to COVID.

## SBAC ELA Comparison 18/19-20/21

Grade	KPS Percent Scoring Level 3 and Above			CT
	2018-19	2019-20	2020-21	State Average 2020-21
<b>3</b>	53%	*	37.6%	37.8%
<b>4</b>	48%	*	34.1%	40.1%
<b>5</b>	58%	*	45.4%	44.2%
<b>6</b>	54%	*	40.0%	46.9%
<b>7</b>	71%	*	46%	51.5%
<b>8</b>	64%	*	50.8%	51.9%
<b>All Grades</b>	58%	*	41.0%	46.2%

\* SBAC was not tested in the 19-20 school year.

## SBAC Math Comparison 18/19-20/21

Grade	KPS Percent Scoring Level 3 and Above			CT
	2018-19	2019-20	2020-21	State Average 2020-21
<b>3</b>	58%	*	31.2%	35.0%
<b>4</b>	46%	*	16.4%	32.3%
<b>5</b>	29%	*	13.7%	28.2%
<b>6</b>	45%	*	20.0%	33.3%
<b>7</b>	44%	*	25.9%	37.5%
<b>8</b>	30%	*	19.0%	35.5%
<b>All Grades</b>	42%	*	21.0%	33.9%

\* SBAC was not tested in the 19-20 school year.

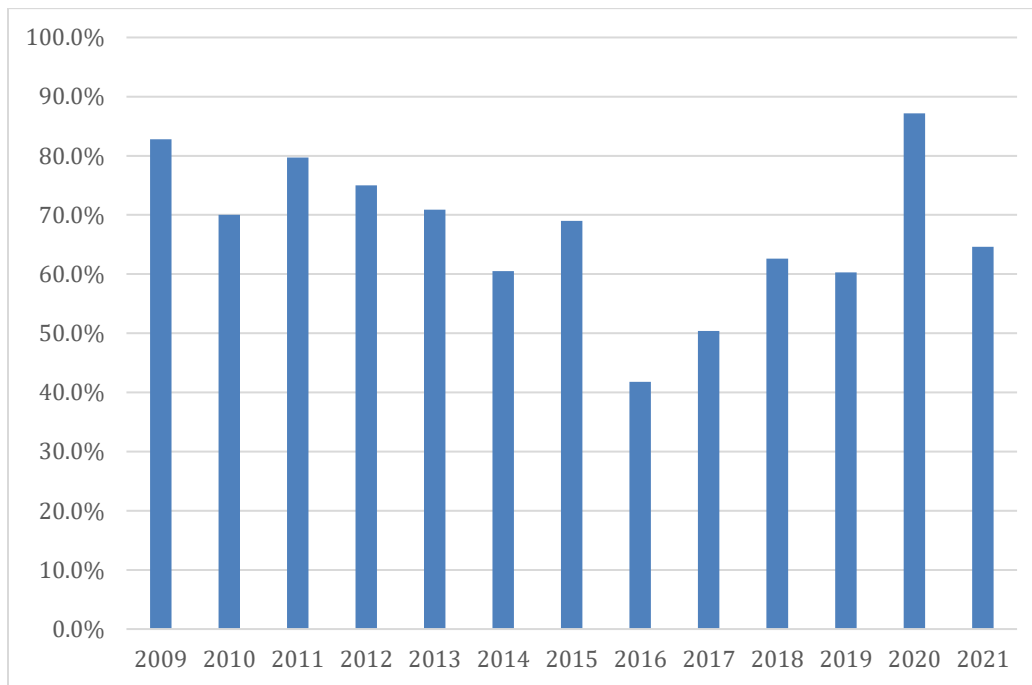
## Killingly High School Advanced Placement Results

**2009-2021**

<b>KPS AP Results</b>	<b>Five</b>	<b>Four</b>	<b>Three</b>	<b>Two</b>	<b>One</b>	<b>Total</b>	<b>Passing %</b>
2009	7	10	7	5	0	29	82.8%
2010	7	18	24	15	6	70	70.0%
2011	15	12	20	8	4	59	79.7%
2012	9	24	21	9	9	72	75.0%
2013	11	25	64	29	12	141	70.9%
2014	7	29	36	29	18	119	60.5%
2015	12	30	45	24	15	126	69.0%
2016	4	19	31	42	33	129	41.8 %
2017	2	13	42	38	18	113	50.4%
2018	8	21	53	36	13	131	62.6%
2019	14	30	32	41	9	126	60.3%
2020	24	45	33	12	3	117	87.2%
2021	17	33	34	34	12	130	64.6%
<b>TOTAL</b>	<b>137</b>	<b>309</b>	<b>442</b>	<b>322</b>	<b>152</b>	<b>1362</b>	<b>65.2%</b>

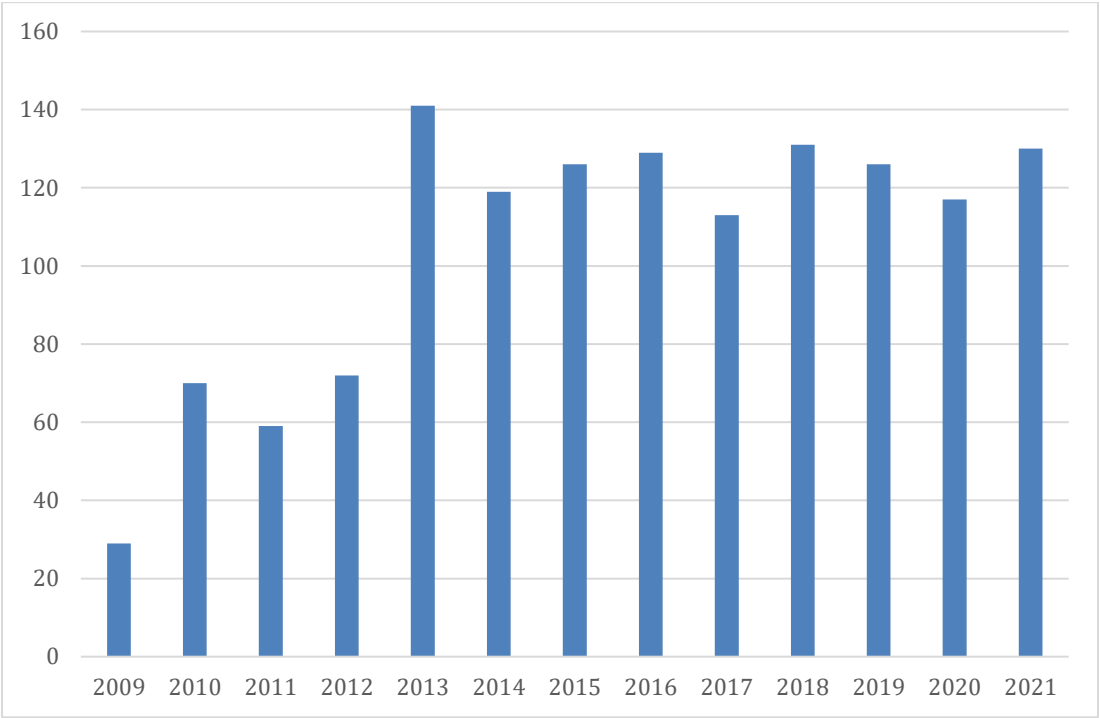
## KHS % Passing Advanced Placement Tests

2009-2021



# KHS Number of Students Taking Advanced Placement Tests

2009-2021



## KHS SAT Day Scores 20-21

Subject	KHS Fall 2020 (Seniors) Met Proficiency	State Met Proficiency	KHS Average Score	State Average Score
ELA (480 +)	77%	66%	544	*
Math (530 +)	39%	42%	501	*

Subject	KHS Spring 2021 (Juniors) Met Proficiency	State Met Proficiency	KHS Average Score	State Average Score
ELA (480 +)	57%	59%	496	514
Math (530 +)	20%	37%	461	501

\* Data not yet available



## Percent of Students at Grade Level in Reading

### KPS 2020-21 Guided Reading Level Data

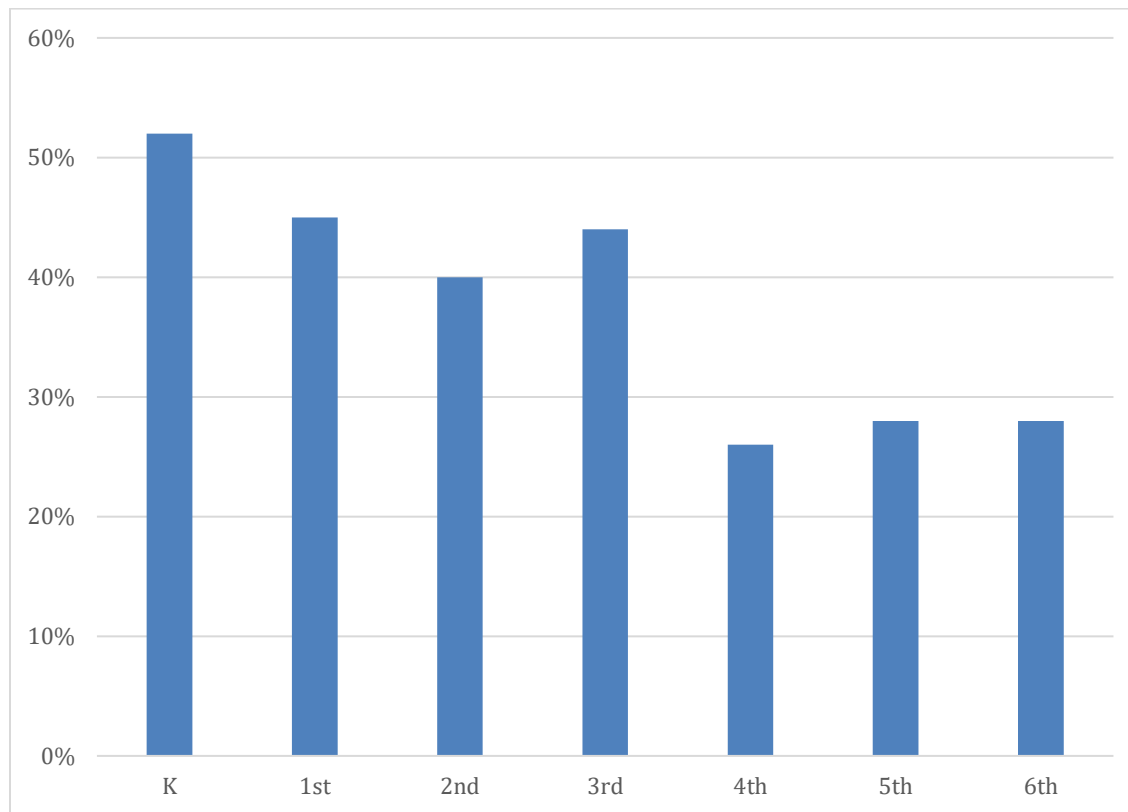
Grade Level	Total Number of Students At/Above Goal	Total in Grade	Percent at Benchmark or Above
K	83	160	52%
1st	67	149	45%
2nd	74	185	40%
3rd	73	166	44%
4th	41	158	26%
5th	41	147	28%
6th	36	128	28%

## Percent of Students at Grade Level in Reading

<b>GRL Grade Level Comparison</b>					
	<b>2016-17</b>	<b>2017-18</b>	<b>2018-19</b>	<b>2019-20</b>	<b>2020-21</b>
<b>K</b>	<b>65.0%</b>	<b>53%</b>	<b>63%</b>	<b>*</b>	<b>52%</b>
<b>1st</b>	<b>40.2%</b>	<b>59%</b>	<b>54%</b>	<b>*</b>	<b>45%</b>
<b>2nd</b>	<b>64.4%</b>	<b>62%</b>	<b>56%</b>	<b>*</b>	<b>40%</b>
<b>3rd</b>	<b>58.9%</b>	<b>63%</b>	<b>56%</b>	<b>*</b>	<b>44%</b>
<b>4th</b>	<b>55.8%</b>	<b>55%</b>	<b>57%</b>	<b>*</b>	<b>26%</b>
<b>5th</b>	<b>45.3%</b>	<b>51%</b>	<b>53%</b>	<b>*</b>	<b>28%</b>
<b>6th</b>	<b>44.7%</b>	<b>64%</b>	<b>64%</b>	<b>*</b>	<b>28%</b>

\* No End of Year Data collected for 2019-20 School Year (COVID-19)

## Percent of Students at Grade Level in Reading 2020-21



# Killingly Public Schools Preschool

Goodyear Early Childhood Center  
Data Summary/Kindergarten Eligible Students Meeting Benchmark  
SY 2020-2021

<u>Language &amp; Literacy Domain</u>	% at Mastery
Phonological Awareness	41%
Writing	58%
Concepts About Print	68%
Storytelling	66%
<u>Early Mathematical Discovery Domain</u>	
Geometry	69%
Cardinality	90%
Number Operations	59%

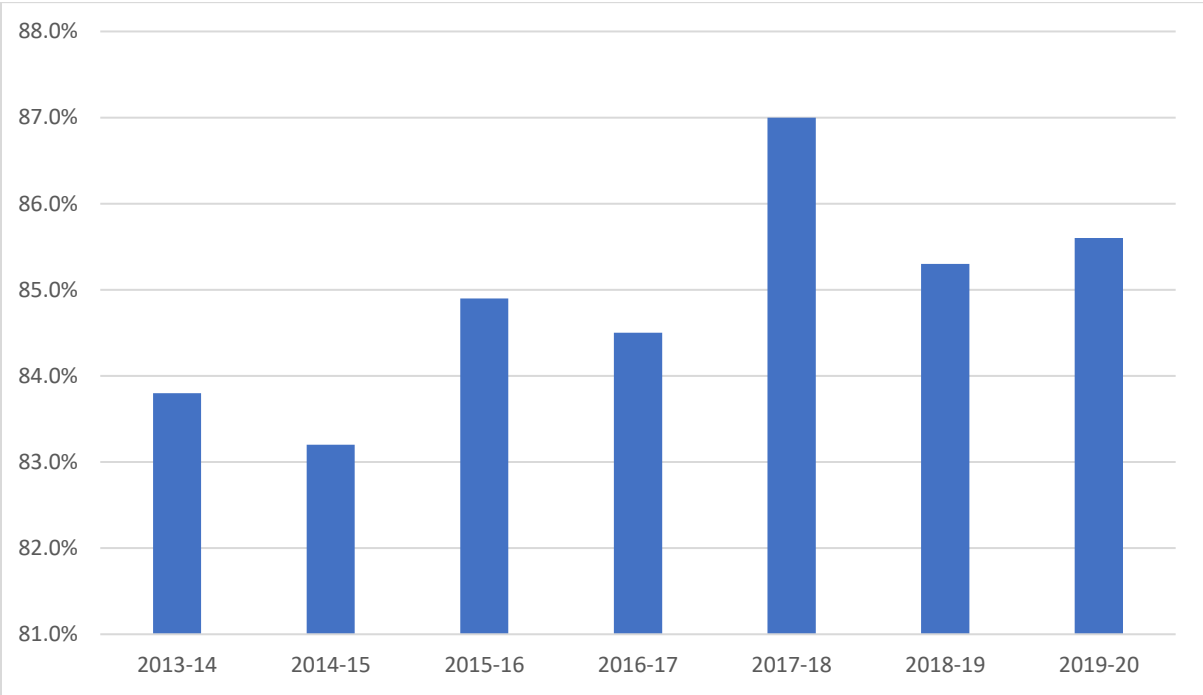
### Four-Year Graduation Rates 13/14-19/20

	2013-14	2014-15	2015-16	2016-17	2017-18	2018-19	2019-20
Killingly High School	83.8%	83.2%	84.9%	84.5%	87.0%	85.3%	85.6%
Putnam High School	86.2%	*	97.0%	85.9%	96.9%	95.3%	93.5%
Plainfield High School	84.8%	81.9%	83.4%	84.9%	84.8%	80.4%	88.8%
Griswold High School	85.0%	90.9%	91.5%	93.0%	90.8%	87.8%	92.2%
Thompson High School	91.7%	*	*	87.7%	84.8%	84.5%	87.2%
Woodstock Academy	96.7%	98.6%	98.4%	94.1%	*	*	*

## Four-Year Graduation Rates 2014-20 Free/Reduced Lunch Eligibility

	Eligibility	2014	2015	2016	2017	2018	2019	2020
Killingly	Free	67.6%	51.9%	68.1%	78.6%	79.5%	73.5%	70.3%
	Reduced	84.0%	85.7%	90.0%	84.0%	77.9%	83.8%	100.0%
	Not Eligible	87.2%	93.3%	96.0%	88.9%	89.3%	93.9%	94.4%
Putnam	Free	80%	84.2%	94.3%	83.3%	94.6%	91.7%	88.2%
	Reduced	*	*	*	*	*	*	*
	Not Eligible	*	*	100%	*	*	100.0%	100.0%
Plainfield	Free	*	*	*	74.2%	75.8%	67.1%	84.9%
	Reduced	*	*	*	81.8%	*	82.6%	85.7%
	Not Eligible	89.2%	92.6%	91.0%	94.0%	92.3%	92.0%	94.2%
Griswold	Free	*	*	86.7%	*	75.8%	*	90.0%
	Reduced	*	*	*	*	*	*	*
	Not Eligible	93.8%	95.3%	96.4%	97.7%	96.1%	95.3%	93.2%
* The data are suppressed to ensure confidentiality.								
* N/A is displayed when a category is not applicable for a district or school								

# KHS Graduation Rate Data 2014-2020



## KHS Graduation Rate Data 2017-2020

Category	4-Year Graduation Rate				Still Enrolled				Other			
	YEAR	2017	2018	2019	2020	2017	2018	2019	2020	2017	2018	2019
All Students	84.5	87.0	85.3	85.6	7.1	6.3	7.9	4.4	8.0	6.8	8.9	10.8
Hispanic	*	93.3	*	*	*	0	*	*	*	6.7	*	*
Non-Hispanic	*	86.4	*	*	*	6.8	*	*	*	6.8	*	*
Indian or Alaska Native	*	100.0	*	*	*	0	*	*	*	0	*	*
Asian	*	100.0	*	*	*	0	*	*	*	0	*	*
Black	*	83.3	*	*	*	16.7	*	*	*	0	*	*
White	86.2	86.5	86.9	86.4	6.1	6.4	6.5	5.3	7.1	7.1	9.2	9.4
Two or More Races	*	33.3	*	*	*	33.3	*	*	*	33.3	*	*
Male	75.4	81.8	80.7	86.9	14.0	10.2	*	*	10.5	8.0	11.3	8.6
Female	84.4	91.3	90.5	84.5	8.3	2.9	*	*	7.3	5.8	6.1	12.6
ELL	*	100.0	*	*	*	0	*	*	*	0	*	*
Non-ELL	*	86.9	85.3	*	*	6.3	7.9	*	*	6.8	8.9	*
Eligible For Lunch	*	82.2	77.1	77.5	*	6.8	*	*	*	11.0	*	*
Eligible For Free Lunch	61.2	81.0	73.5	70.3	21.2	7.9	11.8	*	17.6	11.1	18.4	*
Eligible For Reduced Lunch	82.6	90.0	83.8	100.0	*	0	*	0	*	10.0	*	0
Not Eligible For Lunch	94.1	89.9	93.9	94.4	*	5.9	*	*	*	4.2	*	*
Special Education	40.5	75.7	70.0	75.0	43.2	16.2	20.5	*	16.2	8.1	15.4	20.7
Non-Special Education	87.9	89.7	87.9	86.8	4.6	4.6	5.1	*	7.5	7.5	7.4	9.1

\* The data are suppressed to ensure confidentiality.



# Special Education Data

<b>Local - Special Education Enrollment –KPS</b>								
<b>Grade</b>	<b>2013-14</b>	<b>2014-15</b>	<b>2015-16</b>	<b>2016-17</b>	<b>2017-18</b>	<b>2018-19</b>	<b>2019-20</b>	<b>2020-21</b>
<b>PK</b>	<b>44</b>	<b>50</b>	<b>25</b>	<b>56</b>	<b>58</b>	<b>56</b>	<b>55</b>	<b>52</b>
<b>K</b>	<b>18</b>	<b>26</b>	<b>20</b>	<b>17</b>	<b>32</b>	<b>27</b>	<b>30</b>	<b>28</b>
<b>1st</b>	<b>26</b>	<b>25</b>	<b>24</b>	<b>24</b>	<b>21</b>	<b>36</b>	<b>30</b>	<b>30</b>
<b>2nd</b>	<b>27</b>	<b>10</b>	<b>18</b>	<b>22</b>	<b>25</b>	<b>27</b>	<b>33</b>	<b>33</b>
<b>3rd</b>	<b>24</b>	<b>24</b>	<b>28</b>	<b>13</b>	<b>19</b>	<b>20</b>	<b>24</b>	<b>31</b>
<b>4th</b>	<b>25</b>	<b>19</b>	<b>23</b>	<b>29</b>	<b>14</b>	<b>18</b>	<b>20</b>	<b>24</b>
<b>5th</b>	<b>29</b>	<b>25</b>	<b>29</b>	<b>18</b>	<b>27</b>	<b>21</b>	<b>23</b>	<b>24</b>
<b>6th</b>	<b>15</b>	<b>28</b>	<b>28</b>	<b>27</b>	<b>17</b>	<b>29</b>	<b>27</b>	<b>29</b>
<b>7th</b>	<b>19</b>	<b>23</b>	<b>24</b>	<b>29</b>	<b>27</b>	<b>19</b>	<b>28</b>	<b>25</b>
<b>8th</b>	<b>26</b>	<b>15</b>	<b>11</b>	<b>28</b>	<b>32</b>	<b>25</b>	<b>22</b>	<b>34</b>
<b>9th</b>	<b>35</b>	<b>14</b>	<b>21</b>	<b>19</b>	<b>36</b>	<b>38</b>	<b>35</b>	<b>31</b>
<b>10th</b>	<b>23</b>	<b>38</b>	<b>37</b>	<b>18</b>	<b>15</b>	<b>28</b>	<b>32</b>	<b>31</b>
<b>11th</b>	<b>12</b>	<b>38</b>	<b>28</b>	<b>33</b>	<b>18</b>	<b>16</b>	<b>23</b>	<b>27</b>
<b>12th</b>	<b>17</b>	<b>27</b>	<b>22</b>	<b>31</b>	<b>29</b>	<b>15</b>	<b>17</b>	<b>25</b>
<b>Transition</b>	<b>-</b>	<b>3</b>	<b>3</b>	<b>5</b>	<b>8</b>	<b>10</b>	<b>10</b>	<b>5</b>
<b>Total</b>	<b>340</b>	<b>365</b>	<b>341</b>	<b>369</b>	<b>378</b>	<b>385</b>	<b>409</b>	<b>429</b>

**Special Education Enrollment – Total OOD & Local**

<b>Grade</b>	<b>2013-14</b>	<b>2014-15</b>	<b>2015-16</b>	<b>2016-17</b>	<b>2017-18</b>	<b>2018-19</b>	<b>2019-20</b>	<b>2020-21</b>
<b>PK</b>	<b>45</b>	<b>52</b>	<b>26</b>	<b>57</b>	<b>59</b>	<b>58</b>	<b>56</b>	<b>54</b>
<b>K</b>	<b>22</b>	<b>28</b>	<b>21</b>	<b>18</b>	<b>34</b>	<b>28</b>	<b>31</b>	<b>29</b>
<b>1st</b>	<b>28</b>	<b>29</b>	<b>28</b>	<b>31</b>	<b>22</b>	<b>41</b>	<b>32</b>	<b>32</b>
<b>2nd</b>	<b>35</b>	<b>13</b>	<b>22</b>	<b>25</b>	<b>33</b>	<b>28</b>	<b>39</b>	<b>35</b>
<b>3rd</b>	<b>30</b>	<b>33</b>	<b>31</b>	<b>19</b>	<b>21</b>	<b>28</b>	<b>27</b>	<b>32</b>
<b>4th</b>	<b>31</b>	<b>26</b>	<b>32</b>	<b>31</b>	<b>18</b>	<b>23</b>	<b>27</b>	<b>29</b>
<b>5th</b>	<b>37</b>	<b>32</b>	<b>35</b>	<b>30</b>	<b>28</b>	<b>27</b>	<b>28</b>	<b>28</b>
<b>6th</b>	<b>23</b>	<b>36</b>	<b>35</b>	<b>37</b>	<b>29</b>	<b>30</b>	<b>33</b>	<b>35</b>
<b>7th</b>	<b>26</b>	<b>30</b>	<b>31</b>	<b>38</b>	<b>36</b>	<b>29</b>	<b>29</b>	<b>32</b>
<b>8th</b>	<b>35</b>	<b>24</b>	<b>17</b>	<b>36</b>	<b>44</b>	<b>35</b>	<b>28</b>	<b>36</b>
<b>9th</b>	<b>56</b>	<b>24</b>	<b>29</b>	<b>28</b>	<b>46</b>	<b>59</b>	<b>43</b>	<b>39</b>
<b>10th</b>	<b>42</b>	<b>55</b>	<b>46</b>	<b>30</b>	<b>24</b>	<b>38</b>	<b>55</b>	<b>39</b>
<b>11th</b>	<b>21</b>	<b>51</b>	<b>40</b>	<b>39</b>	<b>30</b>	<b>25</b>	<b>31</b>	<b>45</b>
<b>12th</b>	<b>39</b>	<b>38</b>	<b>44</b>	<b>42</b>	<b>36</b>	<b>22</b>	<b>27</b>	<b>33</b>
<b>Transition</b>	<b>16</b>	<b>14</b>	<b>11</b>	<b>16</b>	<b>22</b>	<b>25</b>	<b>17</b>	<b>13</b>
<b>Total</b>	<b>486</b>	<b>485</b>	<b>448</b>	<b>477</b>	<b>482</b>	<b>496</b>	<b>503</b>	<b>511</b>

### Special Education -Total Out of District Placement K-12

Grade	2017-2018		2018-2019		2019-2020		2020-2021	
	OOD	EASTCONN	OOD	EASTCONN	OOD	EASTCONN	OOD	EASTCONN
PK	1	0	3	0	1	0	2	0
K	1	1	0	1	0	1	1	0
1st	1	0	2	3	0	2	0	2
2nd	3	5	1	0	2	4	1	1
3rd	0	2	3	5	1	2	0	1
4th	2	2	0	5	2	5	3	2
5th	1	0	3	4	1	4	1	3
6th	2	10	1	0	2	4	2	4
7th	4	5	5	6	1	0	3	4
8th	7	5	6	4	4	2	1	1
9th	5	5	19	2	6	1	6	3
10th	9	0	7	3	19	4	7	1
11th	8	4	8	1	6	2	15	3
12th	5	2	7	2	8	2	6	2
Transition	14	0	13	0	8	0	8	0
<b>Total</b>	<b>63</b>	<b>41</b>	<b>78</b>	<b>36</b>	<b>61</b>	<b>33</b>	<b>56</b>	<b>27</b>

**KPS Attendance Data  
2015-2021**

### KPS Attendance Data 15/16-20/21

KPS	2015-2016	2016-2017	2017-2018	2018-2019	2019-2020	2020-2021
Attendance	94.30%	93.70%	93.9%	93.8%	92.4%	89.8%
Chronic Att.	79.45%	79.7%	82.5%	82.9%	79.5%	75.5%
# of Chronic	368/2509	345/2299	300/2286	296/2273	338/2295	723/2214
% Chronic	11.3%	15.0%	13.1%	13.0%	14.7%	32.7%

## KPS Attendance Data 15/16-20/21

KHS	2016-2017	2017-2018	2018-2019	2019-2020	2020-2021
Attendance	92.1%	92.4%	92.0%	91.8%	90.8%
Chronic	76.6%	80.8%	88.7%	73.2%	71.9%
# of chronic	163/793	140/778	141/787	167/778	195/746
% Chronic	20.6%	18.0%	17.9%	21.5%	26.1%

KIS	2015-2016	2016-2017	2017-2018	2018-2019	2019-2020	2020-2021
Attendance	95.04%	93.7%	94.4%	94.5%	94.4%	86.5%
Chronic	81.89%	80.5%	83.3%	84.7%	84.8%	75.3%
# of chronic	94/739	94/680	69/661	75/617	83/643	289/636
% of Chronic	12.72%	13.8%	10.4%	12.2%	12.9%	45.4%

KCS	2015-2016	2016-2017	2017-2018	2018-2019	2019-2020	2020-2021
Attendance	94.12%	94.7%	94.5%	94.5%	93.6%	91.8%
Chronic	82.28%	85.3%	85.2%	83.9%	86.1%	80.9%
# of chronic	60/419	42/337	39/346	36/370	51/357	97/332
% Chronic	14.32%	12.5%	11.3%	9.7%	14.3%	29.2%

KMS	2015-2016	2016-2017	2017-2018	2018-2019	2019-2020	2020-2021
Attendance	96.67%	94.8%	95.0%	95.3%	94.9%	91.0%
Chronic	84.79%	83.2%	83.4%	84.5%	84.3%	77.2%
# of chronic	17/509	46/489	34/501	36/499	37/517	142/500
% Chronic	3.34%	9.4%	6.8%	7.2%	7.2%	28.4%

## KPS Preschool Enrollment

<b>Enrollment Numbers</b>	<b>June 1, 2017</b>	<b>June 1, 2018</b>	<b>June 3, 2019</b>	<b>June 1, 2020</b>	<b>June 1, 2021</b>
<b>Pre-K</b>	<b>119</b>	<b>117</b>	<b>74</b>	<b>104</b>	<b>63</b>
<b>Pre-K Special Ed</b>	<b>54</b>	<b>57</b>	<b>57</b>	<b>48</b>	<b>53</b>
<b>Total</b>	<b>173</b>	<b>174</b>	<b>131</b>	<b>152</b>	<b>116</b>



Enrollment	4 year olds enrolled:	3 year olds enrolled:	Enrollment type:
Goodyear= 90 KCS= 26 Total= 116	Goodyear=48 KCS=18 Total=66	Goodyear=42 KCS=8 Total=50	Full/School Day=89 Part Day=25

Enrolled with an IEP:	Current waiting list:	Utilizing Transportation:	Utilizing Meal Program:
Goodyear=41 KCS=7 Total=48 ( 41% of Total Enrollment)	3 year olds=47 4 year olds=0 Total=47	Goodyear=58 KCS=13 Total=71	<b>Breakfast</b> Goodyear=40 KCS=16  <b>Lunch</b> Goodyear=49 KCS=18

# **Discipline Data**

**2015-2021**

### KPS Discipline Totals

KIS	2014-2015	2015-2016	2016-2017	2017-2018	2018-2019	2019-2020	2020-2021
ISS	134	93	66	107	82	67	5
OSS	21	53	37	50	46	41	20
BUS	7	5	51	17	14	9	0
OFFICE	546	665	566	589	401	320	55

KMS	2014-2015	2015-2016	2016-2017	2017-2018	2018-2019	2019-2020	2020-2021
ISS	6	6	15	7	12	9	0
OSS	7	1	4	3	14	2	0
BUS	2	3	41	47	49	33	1
OFFICE	146	254	309	383	422	320	38

KCS	2014-2015	2015-2016	2016-2017	2017-2018	2018-2019	2019-2020	2020-2021
ISS	5.5	7	1	2	1	4	2
OSS	19	8	6	2	9	5	3
BUS	4	6	76	13	3	4	1
OFFICE	240	143	494	522	203	336	116

KHS	2014-2015	2015-2016	2016-2017	2017-2018	2018-2019	2019-2020	2020-2021
ISS	642	518	346	387	391	327	4
OSS	10	20	46	61	51	44	6
BUS	0	4	0	3	13	27	0
OFFICE	1035	1151	1953	2466	1818	1966	591

**KPS Office Referral Data 2017-2021**

<b>KPS</b>	<b>2016-2017</b>	<b>2017-2018</b>	<b>2018-2019</b>	<b>2019-2020</b>	<b>2020-2021</b>
<b>Office Referrals</b>	<b>3322</b>	<b>3960</b>	<b>2844</b>	<b>2942</b>	<b>800</b>

# Parent Survey Results

## Parent Survey Data 20/21

	How often do you meet with teachers at your child's school? 5=weekly 1=Almost Never	How often do you know how your child is doing in school before you receive your child's report card?	How involved have you been with the PTO at your child's school? 5=Extremely Involved 1=Almost Never	In the past year, how often have you volunteered at your child's school? 5=Weekly 1=Almost Never	In the past year, how often have you visited your child's school (not including pick-up or drop-off)?
GECC	2.4	3.5	1.7	1.1	1.5
KCS	2.5	3.7	1.5	1.2	1.5
KMS	2.5	3.3	1.5	1.2	1.7
KIS	2.2	3.1	1.2	1.1	1.7
KHS	1.7	3.9	1.2	1.2	1.8
<b>District</b>	<b>2.1</b>	<b>3.5</b>	<b>1.3</b>	<b>1.2</b>	<b>1.7</b>
	How often does your child read for fun? 5=Almost all the time 1=Almost never	How much effort does your child put into school related tasks after school? 5=Tremendous effort 1=Almost no effort	How motivated is your child to learn the subjects covered in class? 5=Extremely motivated 1=Not at all motivated	When working on school activities at home, how easily is your child distracted? 1=Easily Distracted, 5=Not at all distracted	On average, how well does your child work independently on learning activities at home?
GECC	3.9	2.7	4.0	2.6	2.8
KCS	3.5	3.3	3.9	3.0	3.0
KMS	3.2	3.3	3.8	2.9	3.2
KIS	2.6	2.9	3.3	2.7	3.0
KHS	2.6	3.5	3.4	3.1	3.6
<b>District</b>	<b>2.9</b>	<b>3.2</b>	<b>3.5</b>	<b>2.9</b>	<b>3.2</b>

## Parent Survey Data 20/21

	How often does your child give up on learning activities that s/he finds hard? 1=All the time, 5=Almost Never	To what extent do you think that children enjoy going to your child's school?	How well do administrators at your child's school create a school environment that helps children learn?	Overall, how much respect do you think the children at your child's school have for the staff?	Overall, how much respect do you think teachers at your child's school have for the children?
GECC	3.2	4.6	4.1	4.2	4.2
KCS	3.1	4.2	4.4	4.6	4.6
KMS	3.1	4.2	4.2	4.5	4.5
KIS	3.1	3.6	3.7	3.9	3.9
KHS	3.7	3.4	3.5	3.8	3.7
<b>District</b>	<b>3.3</b>	<b>3.7</b>	<b>3.9</b>	<b>4.1</b>	<b>4.1</b>

Scale for how much of a problem are the following issues: 1=Very large problem, 5=No problem at all

	Childcare needs.	Transportation related challenges?	Concerns about getting to the school safely?	How busy your schedule is?	You are unsure in how to become a volunteer at your child's school.
GECC	4.8	4.5	4.9	3.6	3.4
KCS	4.3	4.6	4.8	3.5	4.0
KMS	4.2	4.4	4.7	3.2	4.1
KIS	4.5	4.4	4.7	3.2	4.4
KHS	4.8	4.7	4.9	3.4	4.1
<b>District</b>	<b>4.5</b>	<b>4.5</b>	<b>4.8</b>	<b>3.3</b>	<b>4.2</b>

## Parent Survey Data 20/21

	The school provides little information about involvement opportunities?	The school is not welcoming to parents?	You do not feel a sense of belonging with your child's school community?	Negative memories of your own school experience?	Your child does not want you to contact the school?	You worry that adults at the school will treat your child differently if you raise a concern?
GECC	3.4	3.6	3.9	4.5	5.0	4.8
KCS	3.9	4.3	4.3	4.7	4.9	4.6
KMS	4.0	4.5	4.5	4.9	4.9	4.5
KIS	3.9	4.3	4.3	4.6	4.7	4.3
KHS	3.7	4.3	4.1	4.8	4.4	4.2
<b>District</b>	<b>3.8</b>	<b>4.4</b>	<b>4.3</b>	<b>4.7</b>	<b>4.7</b>	<b>4.3</b>

	How often do you worry about violence at your child's school? 1=Almost Always, 5=Almost Never	If a student is bullied at your child's school, how difficult is it for him/her to get help from an adult? 1=Extremely Difficult, 5=Not At All Difficult	How likely is it that someone from your child's school will bully him/her online? 1=Extremely Likely, 5=Not At All Likely	Overall, how unsafe does your child feel at school? 1=Extremely Unsafe, 5=Not At All Unsafe	To what extent are drugs a problem at your child's school? 1=Very Large Problem, 5=Not A Problem At All
GECC	4.5	4.4	4.9	5.0	5.0
KCS	4.2	4.4	4.5	4.7	5.0
KMS	4.3	4.2	4.5	4.8	5.0
KIS	3.9	3.8	3.6	4.5	4.2
KHS	4.0	4.0	3.7	4.3	3.6
<b>District</b>	<b>4.1</b>	<b>4.1</b>	<b>4.0</b>	<b>4.5</b>	<b>4.3</b>



## Number of Responses

Building	Parent
GECC	12
KCS	93
KMS	111
KIS	172
KHS	215
<b>Total</b>	<b>603</b>