

# Facilities, Planning and Construction August 28, 2017



*Every Student Future Ready.*

---

# Construction

## Construction Projects

- Adams Middle School
- District-wide Athletic Improvements
- Chisholm Trail/ Haslet Drainage, Maintenance Parking Lot and Eaton Temporary Bus Egress/Ingress
- NISD Stadium Scoreboard & Elevator
- Elementary School #18
- Beck Elementary Addition

## Planning Projects

- New Elementary Prototype
- Hughes Elementary Addition
- Beck Roofing

*Every Student Future Ready.*



*Every Student Future Ready.*

Teamwork | Pride | Excellence  
**Northwest**  
INDEPENDENT SCHOOL DISTRICT  
[www.nisdtx.org](http://www.nisdtx.org)



*Every Student Future Ready.*



*Every Student Future Ready.*



*Every Student Future Ready.*



*Every Student Future Ready.*









# Athletic Improvements

## High School Fields

### NHS

- (2) Practice Fields **Complete**
- IAC **Complete**
- Sub-Varsity (resurfacing track) **Complete**
- Baseball/Softball Fields **(active)**

### BNHS

- (2) Practice Fields **Complete**
- IAC **Complete**
- Sub-Varsity Fields (turf and resurfacing track) **Complete**
- Baseball/Softball Fields **(active)**

## Middle School Fields

### Pike and Tidwell

- Resurface Track **(active Tidwell)**
- Turf Practice **(Complete)**

### Chisholm Trail and Medlin

- New Track **(active Medlin)**
- New Turf Field **(Complete)**

# Tidwell Middle School



# Chisholm Trail Middle School



# Pike Middle School



# Medlin Middle School



# Northwest Sub-Varsity/Practice Track





# Northwest Practice



# Byron Nelson Sub-Varsity



# NISD Stadium Turf



# NISD Stadium Scoreboard



# NISD Stadium Scoreboard



---

# Paving and Improvements

- Texan Dr. Complete
- Chisholm Trail Complete
- Eaton Bus Drive Complete
- Maintenance

---

# Elementary #18

## – Balfour Beatty

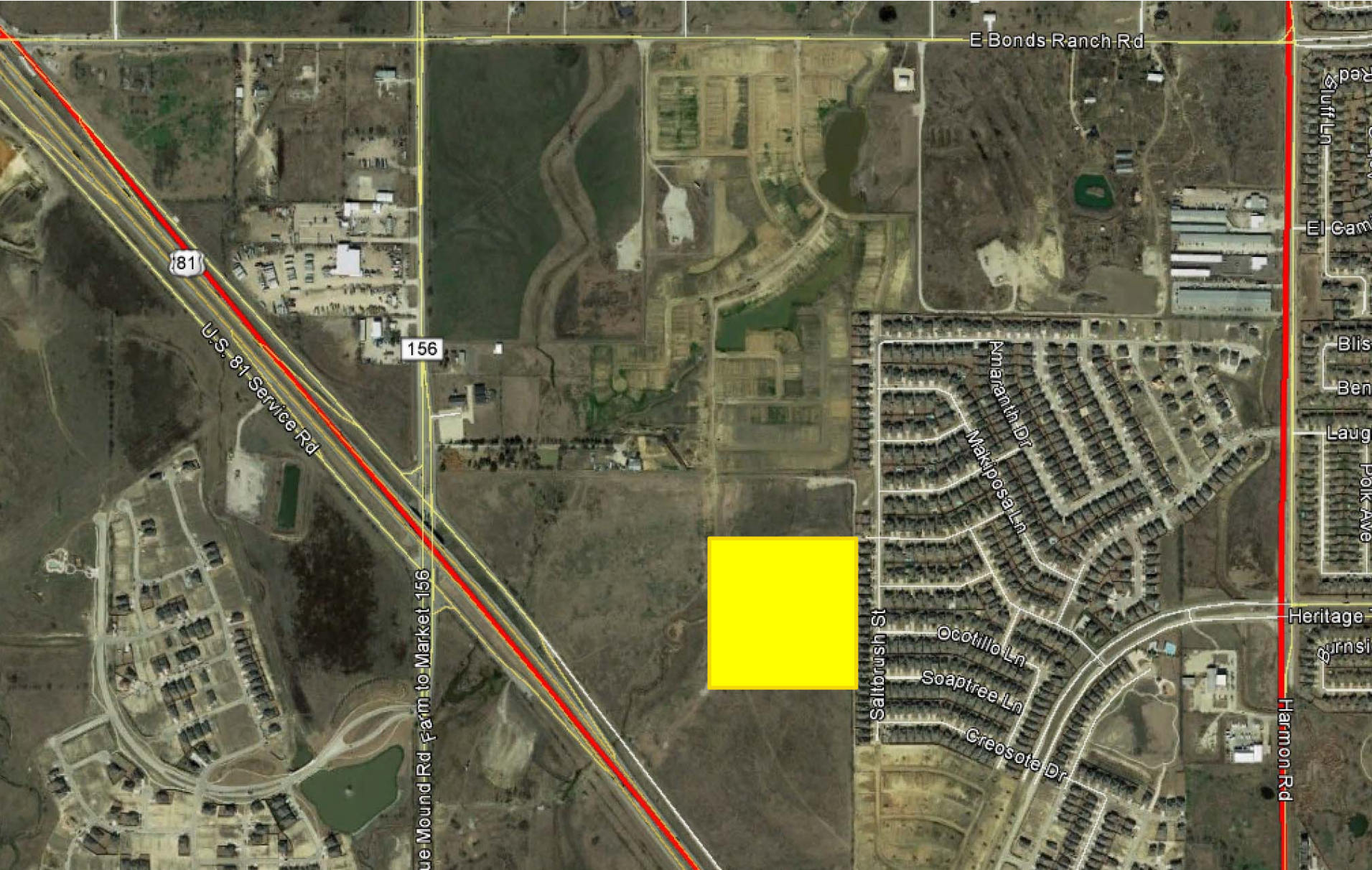
- Mobilizing
- Permit

# Elementary #18





# Elementary #18



---

# Beck Addition

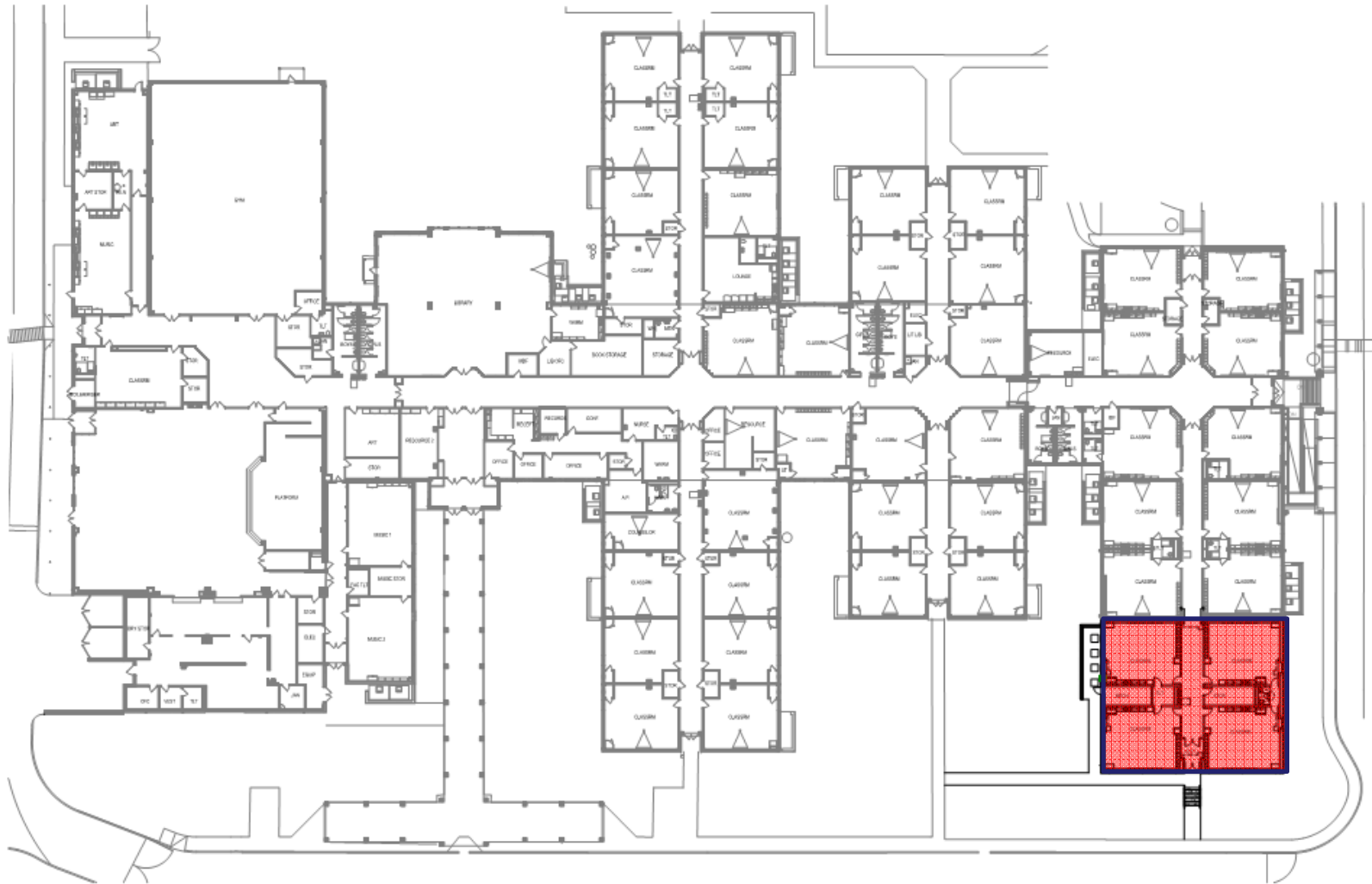
## – Pogue

Council Meeting August 22<sup>nd</sup>

- Permit

Set up for the start of school

# Beck 2017 Addition



---

# Planning Projects

- **Hughes Elementary Addition**
  - 650 to 850 capacity
- **Beck Roofing**
- **New Prototype Elementary School (Elementary #19)**

---

# Questions

*Every Student Future Ready.*