

# Northwest ISD Facilities Report

November 12, 2018



# Northwest ISD Facilities

- NISD Team
- Maintenance
- Construction
- Planning
- Safety and Security



# **Northwest ISD Facilities Maintenance**

**NISD Maintenance Department**

**51 Maintenance Employees**

**24,000+ Student Enrollment**

**Over 4.5 million Sq. Ft. of Facilities  
(and counting)**

**50 Maintenance Vehicles**



# **NISD Maintenance Department**

## **Current Work Order Status:**

**Since the inception of the School Dude System in 2007:**

**Processed & Completed 119,371 Work Requests.**

**5,315 - completed since January 1<sup>st</sup>, 2018.**

**That is an average of 36 per day during the school year  
and 18 per day during the summer**

# **NISD Maintenance Department**

## **Summer 2018 Major Maintenance Work**

**Byron Nelson HS**

**Northwest HS**

**Denton Creek**

**Medlin MS**

**Chisholm Trail MS**

**Beck ES**

**Granger ES**

**Lakeview ES**

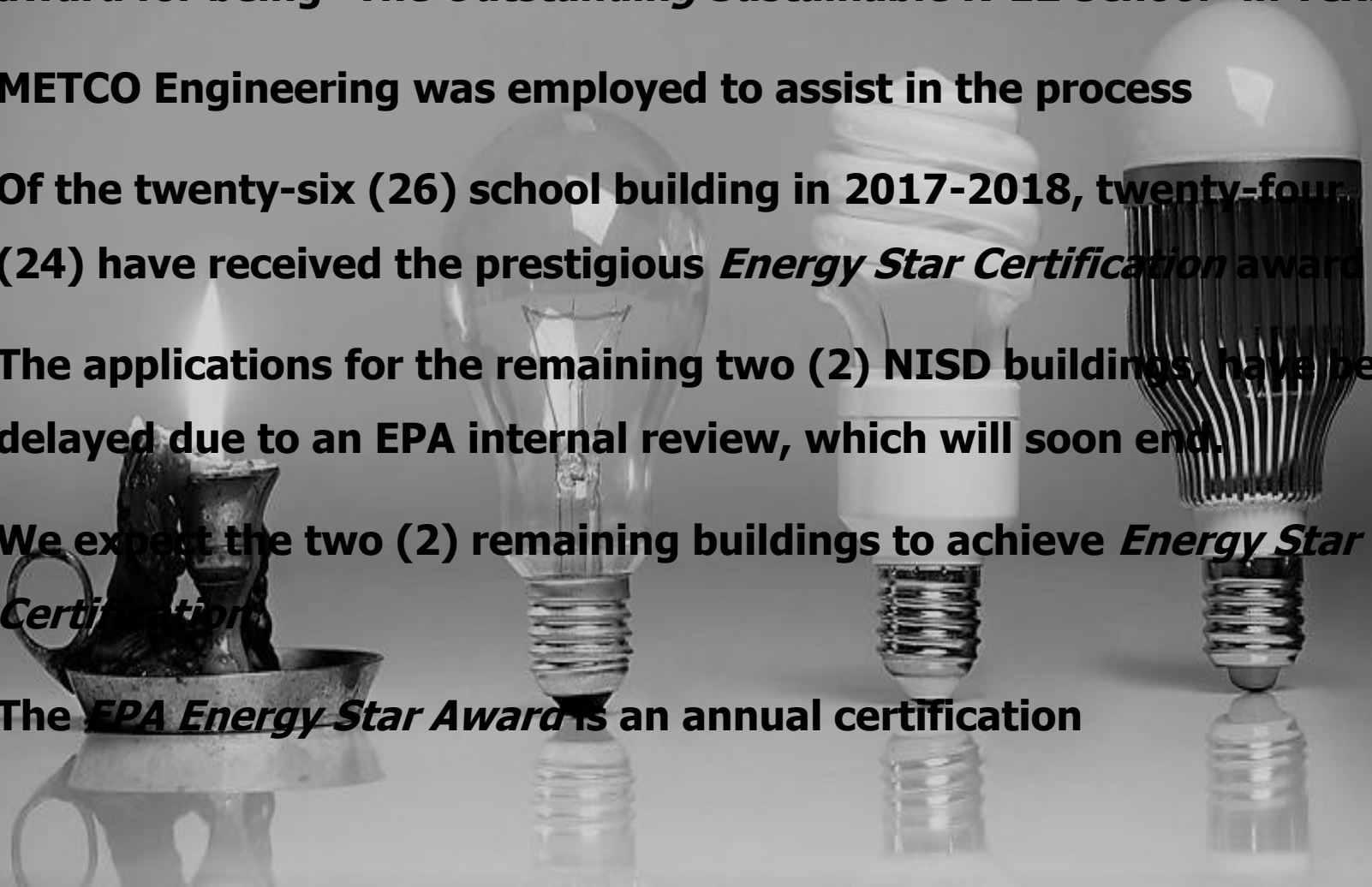
**Seven Hills ES**

**Peterson ES**

**Administration**

# NISD Energy Management

- In 2017, at the *Texas Energy Summit*, Northwest ISD received the award for being "*The Outstanding Sustainable K-12 School*" in Texas
- METCO Engineering was employed to assist in the process
- Of the twenty-six (26) school building in 2017-2018, twenty-four (24) have received the prestigious *Energy Star Certification* award
- The applications for the remaining two (2) NISD buildings, have been delayed due to an EPA internal review, which will soon end.
- We expect the two (2) remaining buildings to achieve *Energy Star Certification*
- The *EPA Energy Star Award* is an annual certification



# ABM in Northwest ISD

**Project Manager: Kelley Lewis - 20 years exp. in K-12 Management**

**[kelley.lewis@abm.com](mailto:kelley.lewis@abm.com)**

**Jorge Alonzo**

**[jorge.alonzo@abm.com](mailto:jorge.alonzo@abm.com)**

**Curtis Elementary School**

**Nance Elementary School**

**Peterson Elementary School**

**Schluter Elementary School**

**Sendera Ranch Elementary School**

**Thompson Elementary School**

**Adams Middle School**

**Wilson Middle School**

**Eaton High School**

**Charlie Marquez**

**[charlie.marquez@abm.com](mailto:charlie.marquez@abm.com)**

**Beck Elementary School**

**Cox Elementary School**

**Granger Elementary School**

**Hughes Elementary School**

**Lakeview Elementary School**

**Roanoake Elementary School**

**Medlin Middle School**

**Tidwell Middle School**

**Byron Nelson High School**

**Steele High School**

**Denton Creek School**

**Chris Cunningham**

**[christopher.cunningham@abm.com](mailto:christopher.cunningham@abm.com)**

**Clara Love Elementary School**

**Haslet Elementary School**

**Hatfield Elementary School**

**Justin Elementary School**

**Prairie View Elementary School**

**Seven Hills Elementary School**

**Chisholm Trail Middle School**

**Pike Middle School**

**Northwest High School**

**OLC**

**Northwest Administration**

**Northwest Athletics**

**NISD Central Campus**



The background of the slide features a dark red, semi-transparent overlay. Within this overlay, several construction cranes are visible in a lighter red tone. In the foreground, the words "UNDER CONSTRUCTION" are rendered in large, bold, 3D block letters. The word "UNDER" is positioned above "CONSTRUCTION".

# Northwest ISD Facilities

## Construction

# Active Projects

## – **Curtis Elementary School**

- All areas of the building are completed
- Aramark moved in last week; health inspection

## – **Kelly W. Box Agricultural Science Center Addition/Renovation**

- Releasing Goats and Cow Barn to NISD staff at the end of this week
- Pig barn will not be released until early January, due to rain
- Arena will not be released until mid January, due to rain

## – **Byron Nelson Fieldhouse**

- Early Stages of Construction
  - Piers, Fire Lanes, and Grade Beams

# Active Projects

## – Safety and Security Upgrades

- Starting our first school this week
  - Looking at one school a week

## – Lance Thompson Elementary School

- 2 slabs poured
- Steel Erected in 2 areas
- Decking on in 1 area

## – Sendera Ranch and Thompson Elementary School Addition/Renovations

- Construction started Mid-October

# Curtis Elementary School





# Curtis Elementary School



# Curtis Elementary School





# Curtis Elementary School





# Agriculture Barn





# Cow Barn





# Cow Barn





# Goat Barn





# Pig Barn





# Pig Barn





# New Drive





# Byron Nelson Fieldhouse

## Phase 1



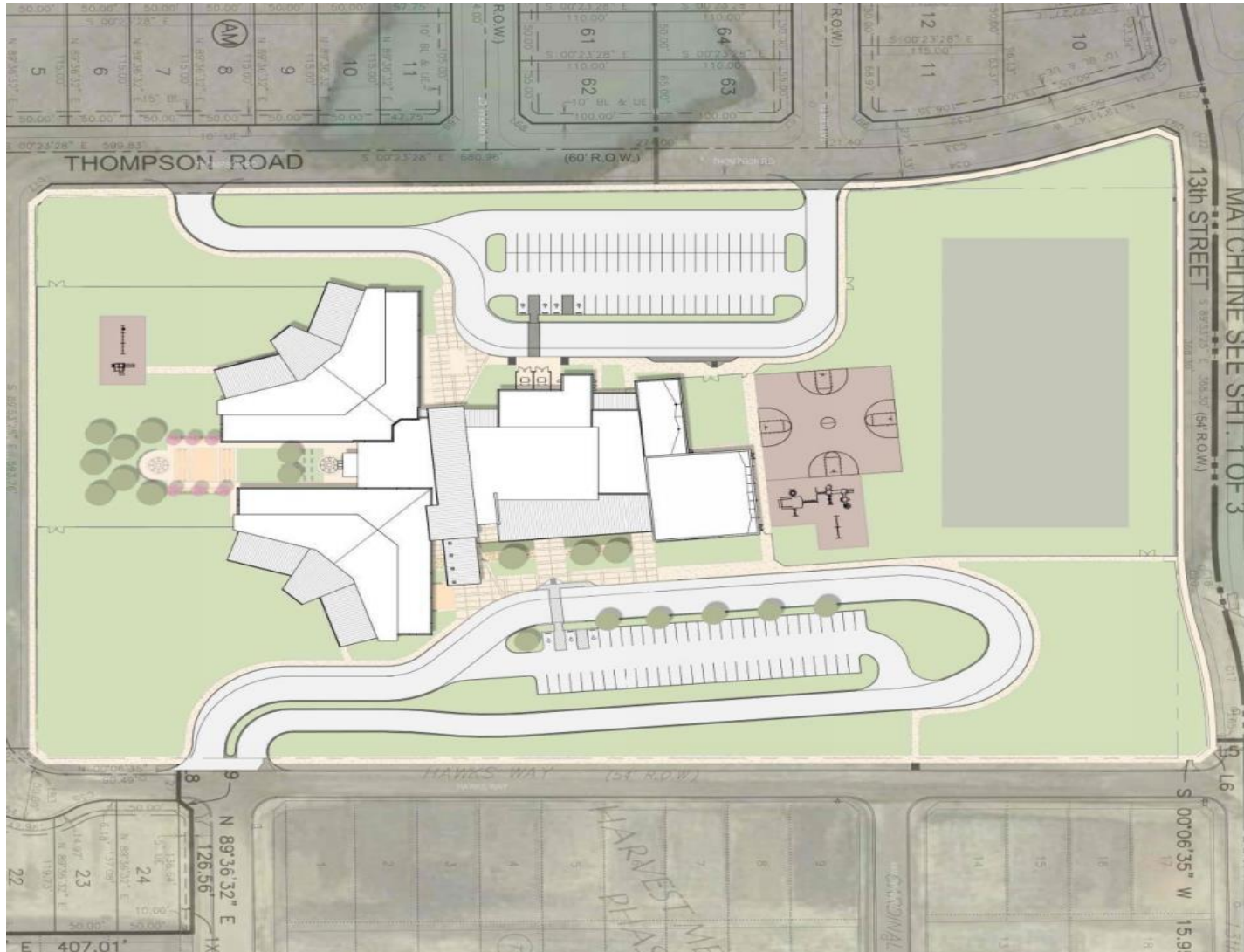
# Safety and Security Upgrades



*Every Student Future Ready.*



# Lance Thompson Elementary School

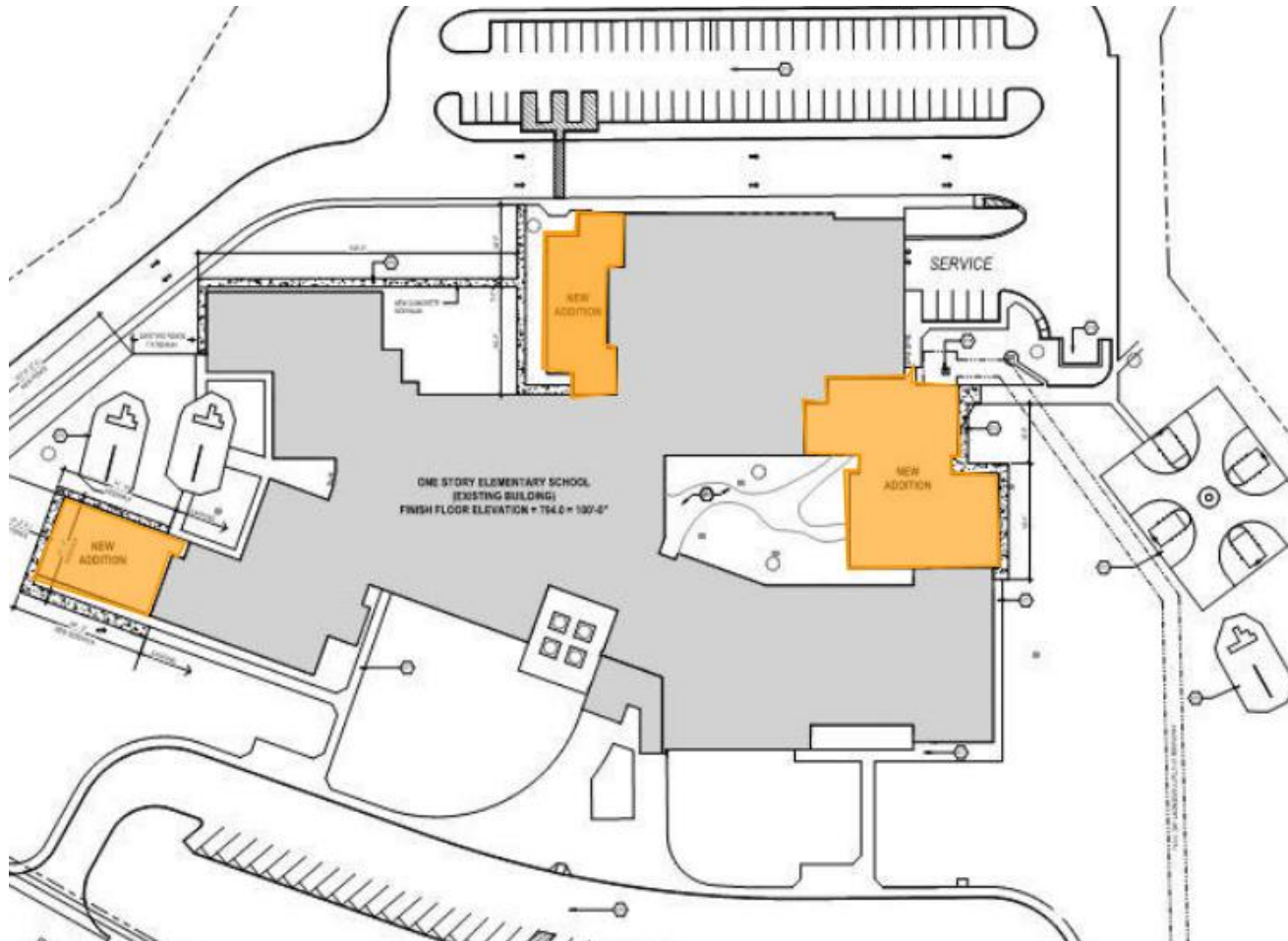






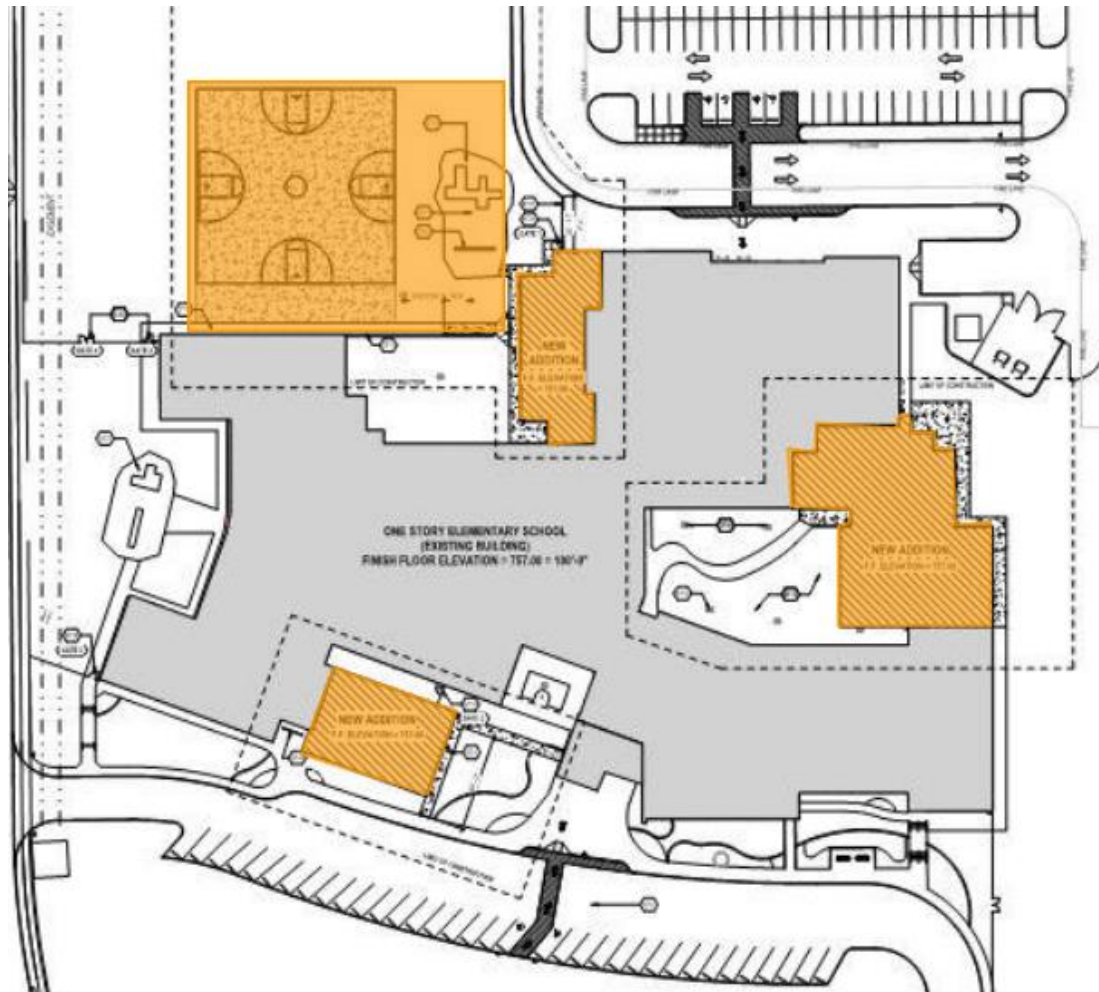


# Thompson Addition and Renovations





# Sendera Ranch Addition and Renovations



A map of the Northwest ISD Facilities Planning area, overlaid with a semi-transparent red filter. The map shows various city and district boundaries, including Justin, Roanoke, Hatfield, Hughes, Granger, Haslet, Thompson, Sendera Ranch, and Prairie View. Major highways like I-35, I-114, and I-170 are also visible.

# Northwest ISD Facilities Planning

# Planning Projects

## – Natatorium

- Bid Project December
- Board Approval January

## – Byron Nelson Renovation and Addition

- Bid Project December
- Board Approval January

## – Northwest High School Fieldhouse and Renovations

- Early stage discussion with Architect
- CMR Bid approval December

## – Eaton High School Addition

- Early stage discussion with Architect

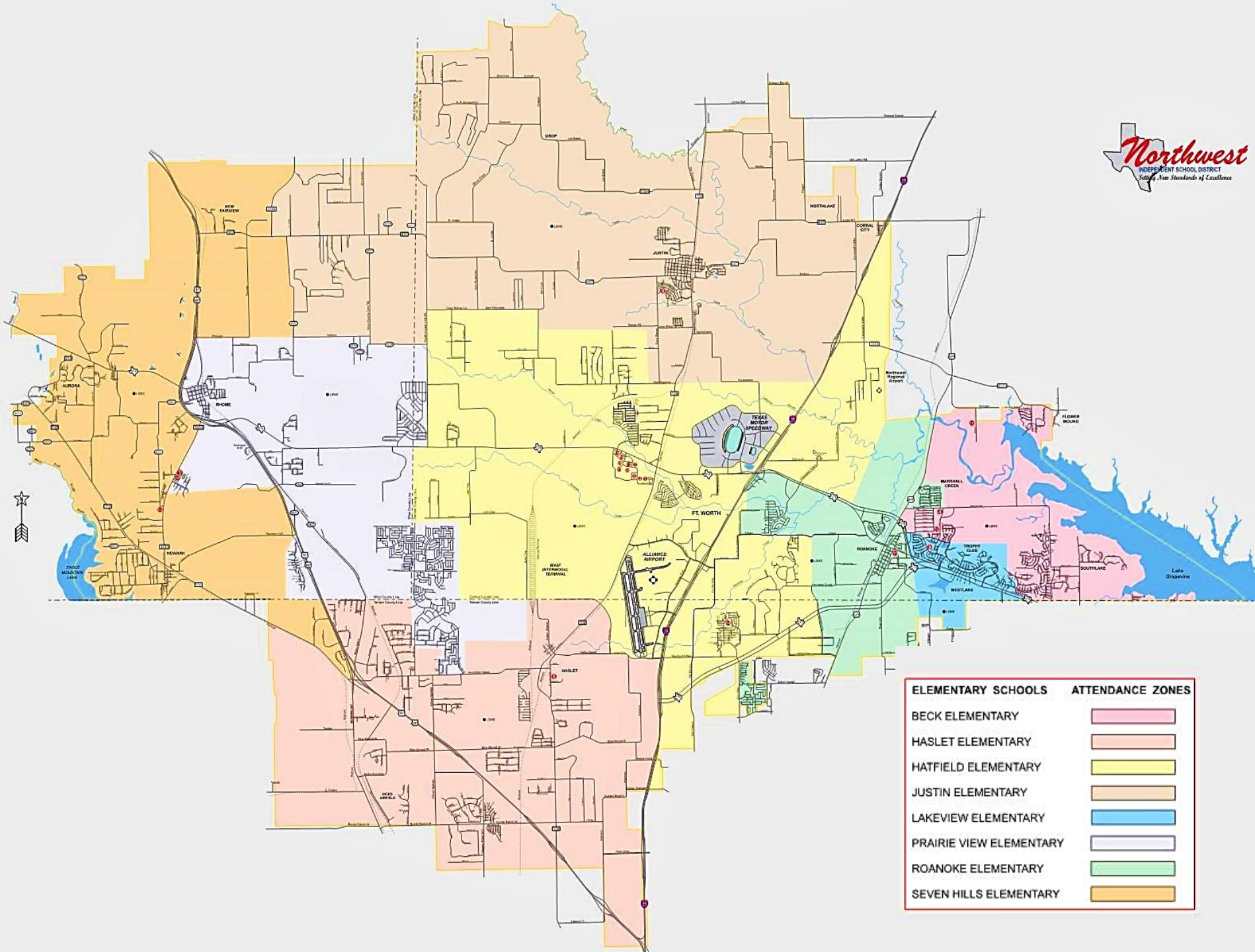
## – Middle School Projects

- Early stage discussion with Architect

# Planning – Fast Growth

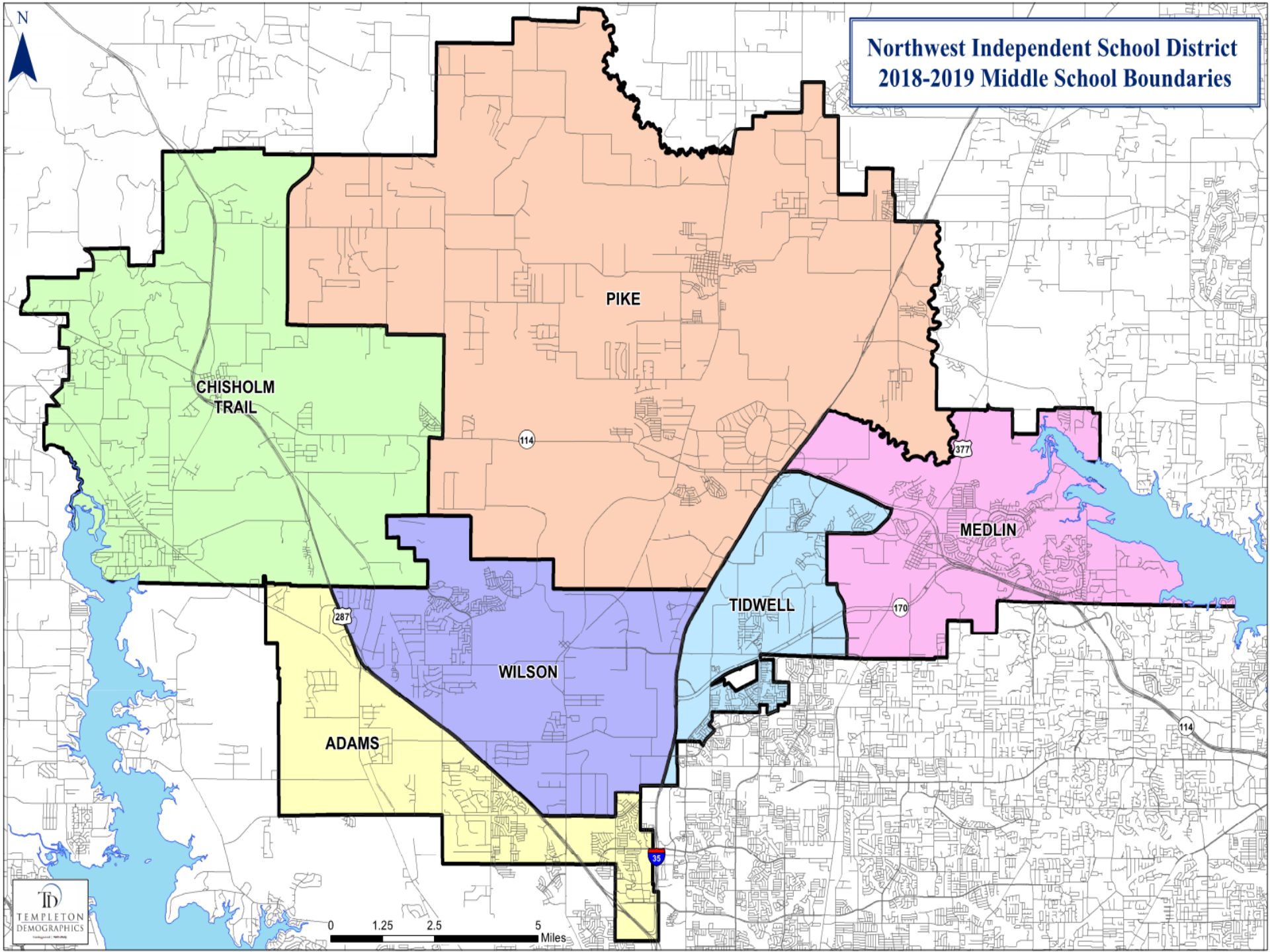
- Encompasses 234 square miles
- 14 Towns and Cities & 3 Counties (Denton, Tarrant, Wise)
- Approximately 25% built out
- Economic Stimulus- Alliance, TX & 35 Corridor
- 70 +/- Active Developments
- Growth
  - 2000- 5,373 students
  - 2013- 19,050 students
  - *2018 – 24,200+ students projected*





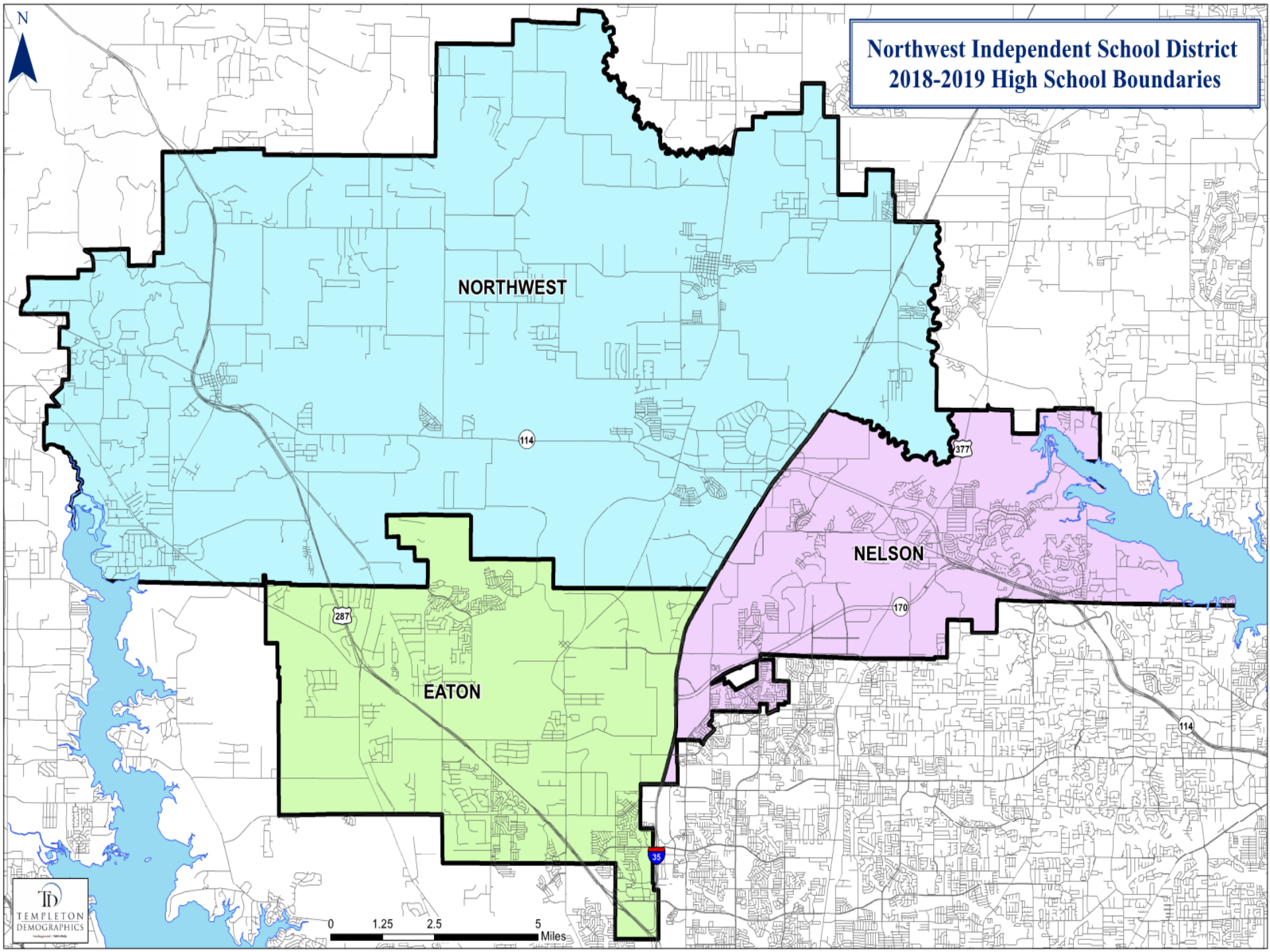
ELEMENTARY SCHOOLS	ATTENDANCE ZONES
BECK ELEMENTARY	
HASLET ELEMENTARY	
HATFIELD ELEMENTARY	
JUSTIN ELEMENTARY	
LAKEVIEW ELEMENTARY	
PRAIRIE VIEW ELEMENTARY	
ROANOKE ELEMENTARY	
SEVEN HILLS ELEMENTARY	

**Northwest Independent School District  
2018-2019 Middle School Boundaries**





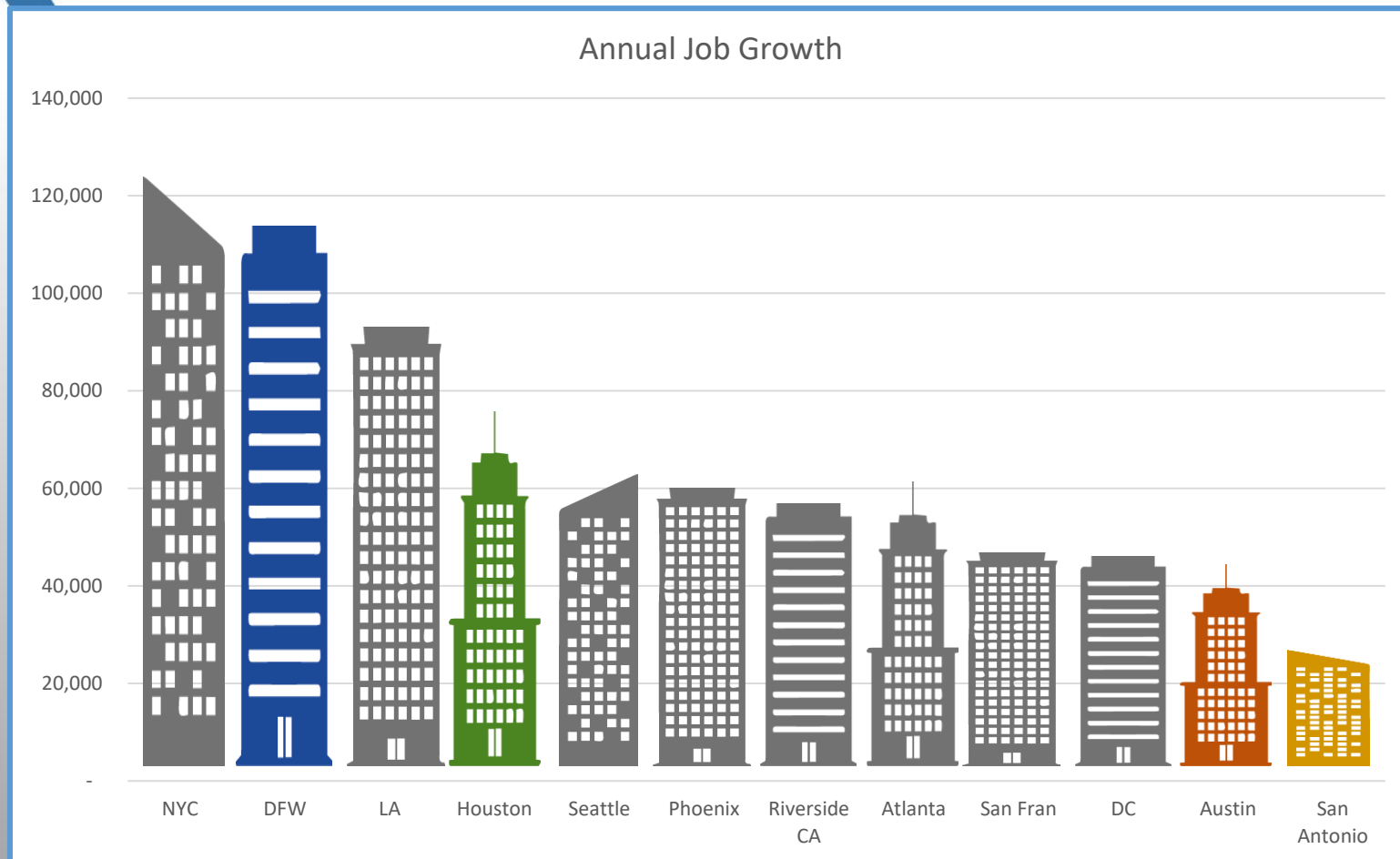
**Northwest Independent School District  
2018-2019 High School Boundaries**







# Economic Conditions – Job Growth



- Texas has 4 of the top 25 job growth cities in the U.S.
- DFW grew almost 115,000 jobs in the last 12 months and is second only to NYC in number of jobs





# Texas Enrollment Trends

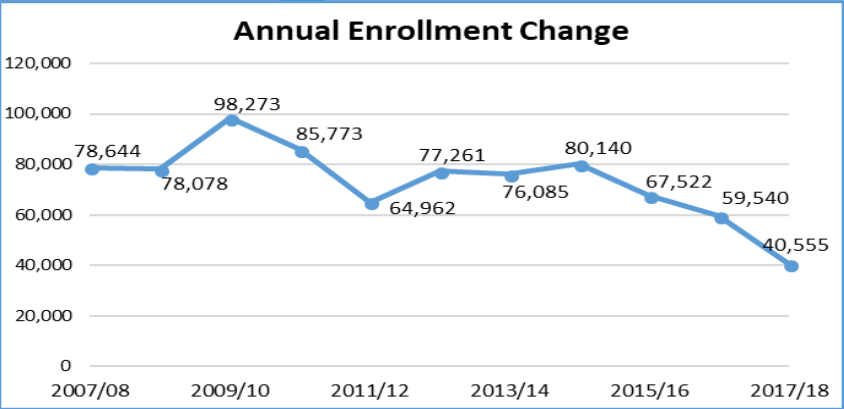
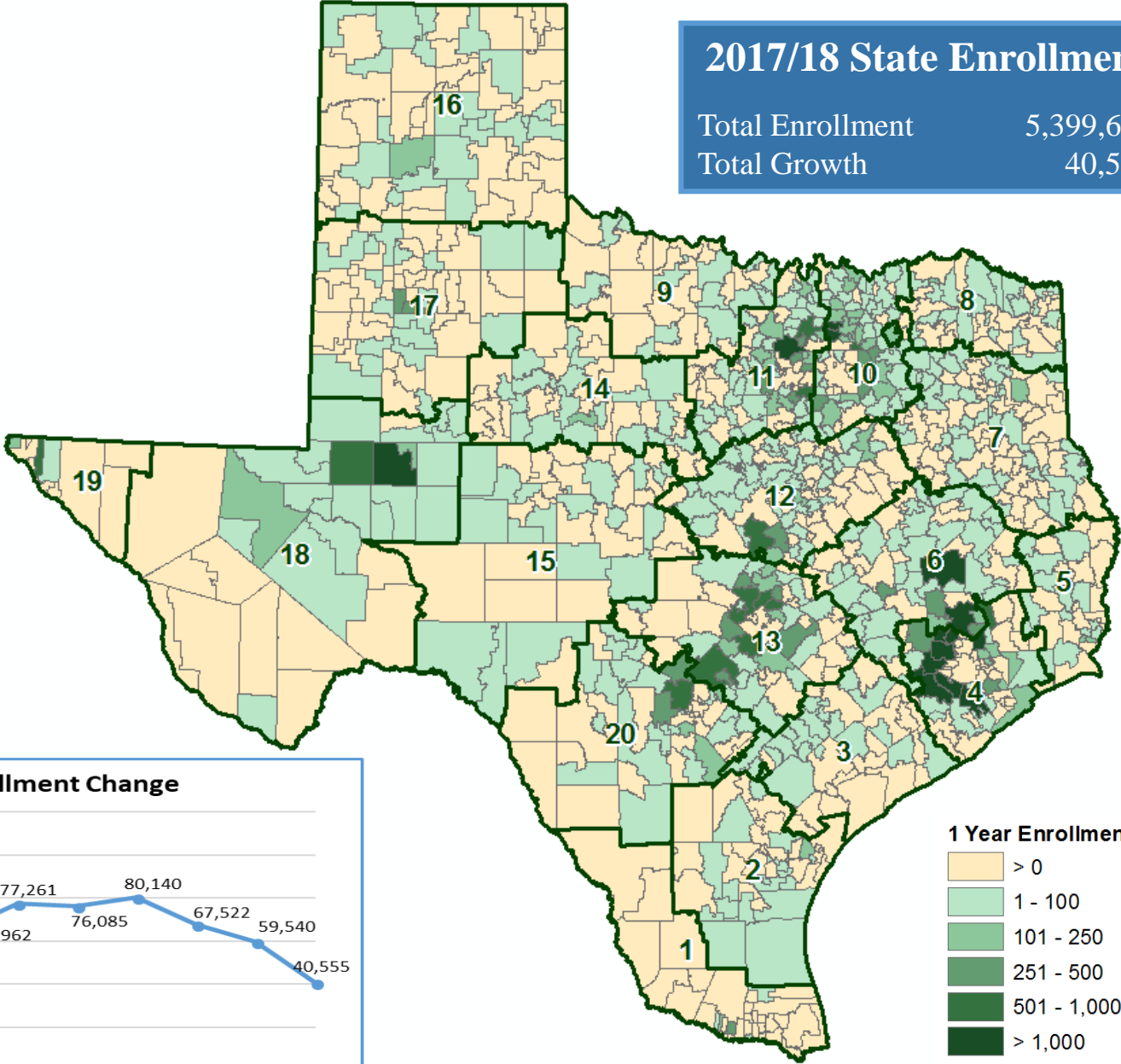
2017/18 State Enrollment

Total Enrollment

5,399,682

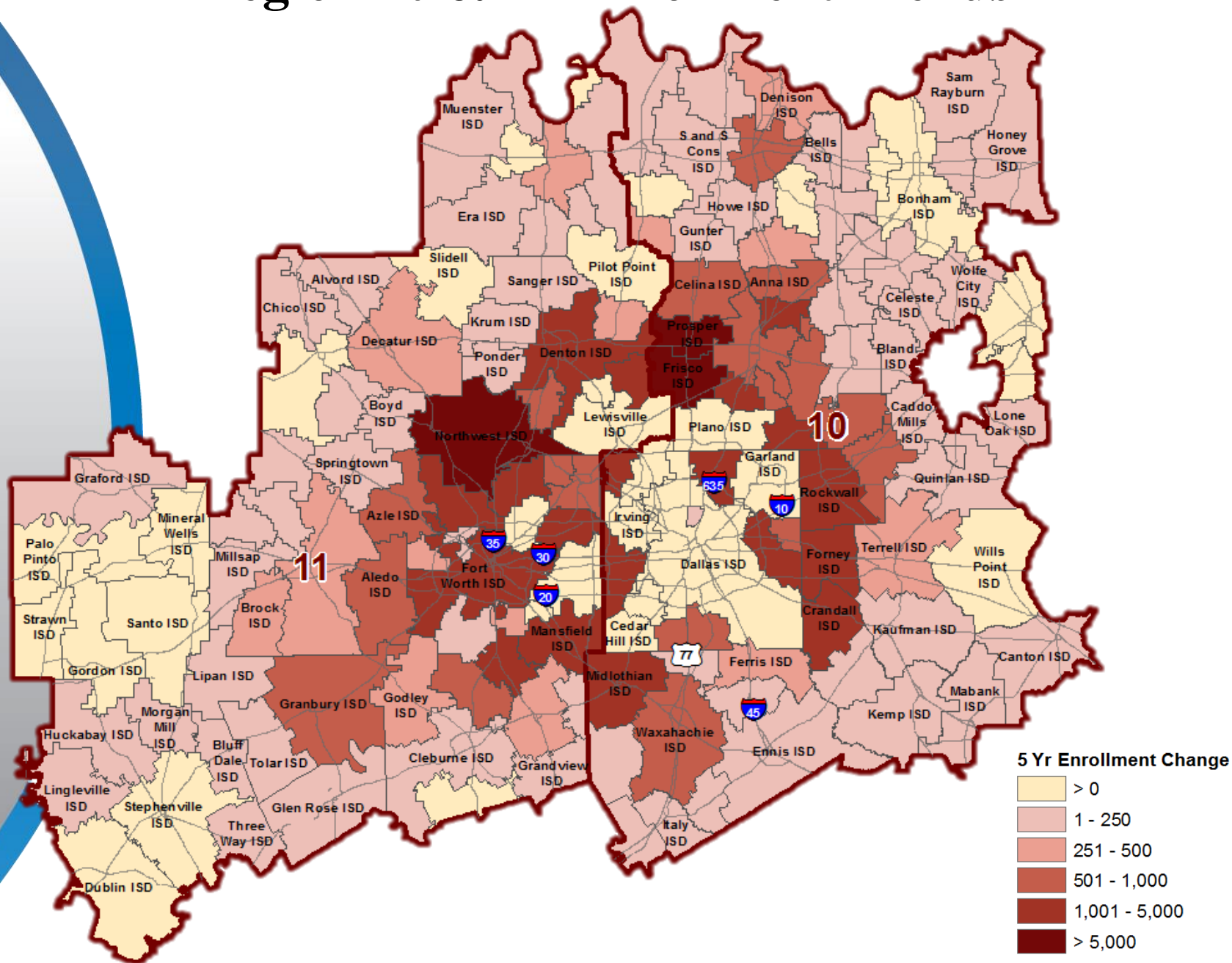
Total Growth

40,555





# Region 10 & 11 Enrollment Trends



# Region 10 & 11 Enrollment Trends

## Region 10

Rank	District	2012/13 Enrollment	2017/18 Enrollment	5-YEAR Change (12/13-17/18)	5-YEAR PCT Growth
1	Frisco ISD	42,703	58,450	15,747	36.9%
2	Prosper ISD	5,502	12,133	6,631	120.5%
3	Grand Prairie ISD	26,928	29,362	2,434	9.0%
4	Wylie ISD (Collin)	13,425	15,769	2,344	17.5%
5	Mesquite ISD	39,128	41,022	1,894	4.8%
6	Rockwall ISD	14,483	16,295	1,812	12.5%
7	Coppell ISD	10,997	12,625	1,628	14.8%
8	Forney ISD	8,571	10,196	1,625	19.0%
9	Midlothian ISD	7,560	8,872	1,312	17.4%
10	Allen ISD	19,891	21,159	1,268	6.4%
11	Richardson ISD	38,046	39,314	1,268	3.3%
12	Melissa ISD	1,695	2,792	1,097	64.7%
13	Crandall ISD	3,030	4,056	1,026	33.9%
14	Princeton ISD	3,435	4,381	946	27.5%
15	Anna ISD	2,526	3,459	933	36.9%
16	Waxahachie ISD	7,652	8,517	865	11.3%
17	Royse City ISD	4,905	5,739	834	17.0%
18	Lancaster ISD	6,538	7,371	833	12.7%
19	De Soto ISD	8,900	9,657	757	8.5%
20	Community ISD	1,635	2,262	627	38.3%

## Region 11

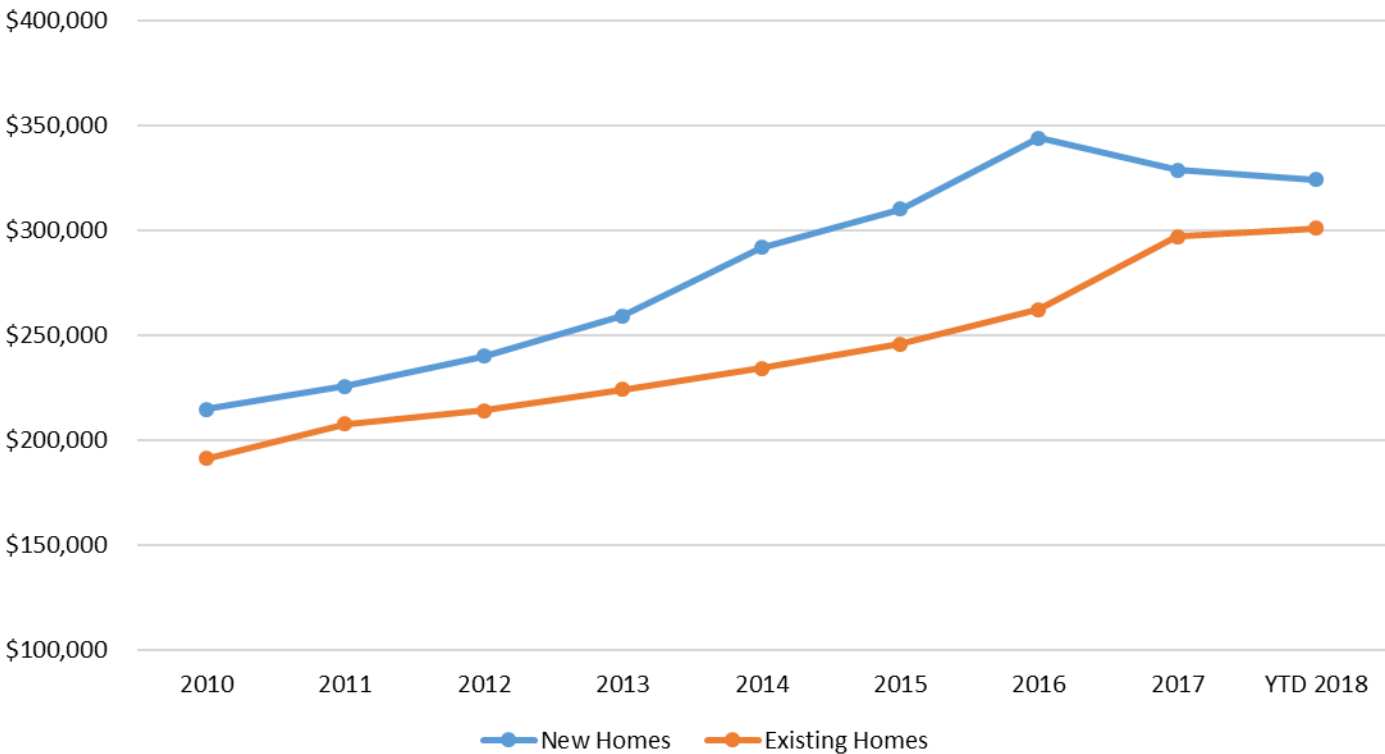
Rank	DISTRICT	2012/13 Enrollment	2017/18 Enrollment	5-YEAR CHANGE (12/13-17/18)	5-YEAR PCT Growth
1	Northwest ISD	17,813	23,141	5,328	29.9%
2	Denton ISD	25,782	29,420	3,638	14.1%
3	Fort Worth ISD	83,491	86,234	2,743	3.3%
4	Mansfield ISD	32,883	35,054	2,171	6.6%
5	Burleson ISD	10,581	12,221	1,640	15.5%
6	Hurst-Euless-Bedford ISD	21,819	23,429	1,610	7.4%
7	Eagle Mt-Saginaw ISD	17,731	19,317	1,586	8.9%
8	Keller ISD	33,365	34,937	1,572	4.7%
9	Little Elm ISD	6,399	7,526	1,127	17.6%
10	Aledo ISD	4,729	5,718	989	20.9%
11	Argyle ISD	1,907	2,716	809	42.4%
12	Carroll ISD	7,711	8,360	649	8.4%
13	Joshua ISD	4,906	5,528	622	12.7%
14	Granbury ISD	6,536	7,143	607	9.3%
15	Grapevine-Colleyville ISD	13,386	13,975	589	4.4%
16	Azle ISD	5,930	6,496	566	9.5%
17	Aubrey ISD	2,006	2,495	489	24.4%
18	Weatherford ISD	7,635	8,116	481	6.3%
19	Everman ISD	5,401	5,838	437	8.1%
20	Brock ISD	1,002	1,373	371	37.0%





# Northwest ISD Historical Home Price Analysis

New vs Existing Sale Price, 2010 – YTD 2018



	New Homes	Existing Homes
2010	\$214,586	\$191,241
2011	\$225,780	\$207,615
2012	\$239,905	\$213,935
2013	\$259,313	\$224,141
2014	\$291,933	\$234,350
2015	\$310,196	\$245,737
2016	\$343,952	\$262,351
2017	\$328,674	\$296,887
YTD 2018	\$324,136	\$301,123

- The average new home price has risen 51% since 2010, a price difference of \$109,550
- The average existing home price within NISD has risen 57% since 2010, a price change of \$109,882









# DFW New Home Ranking Report

ISD Ranked by Annual Closings – 2Q18

Rank	District Name	Annual Starts	Annual Closings	VDL	Future
1	Prosper ISD	2,939	2,663	5,419	23,144
2	Frisco ISD	2,475	2,526	4,984	4,480
3	Denton ISD	2,462	2,162	3,104	19,240
<b>4</b>	<b>Northwest ISD*</b>	<b>1,862</b>	<b>1,771</b>	<b>2,282</b>	<b>30,808</b>
5	Dallas ISD	1,885	1,700	2,103	7,040
6	Little Elm ISD	1,448	1,497	1,805	2,573
7	Eagle Mt.-Saginaw ISD	1,438	1,172	1,392	21,135
8	Forney ISD	1,389	1,154	1,373	14,003
9	Lewisville ISD	1,181	1,041	2,160	3,899
10	Rockwall ISD	932	883	2,153	8,856
11	McKinney ISD	795	813	1,941	8,801
12	Wylie ISD	909	811	972	3,978
13	Crowley ISD	979	711	972	12,044
14	Midlothian ISD	756	685	1,212	19,610
15	Mansfield ISD	725	673	1,390	6,466
16	Allen ISD	687	631	1,235	1,150
17	Keller ISD	586	620	635	1,682
18	Princeton ISD	727	605	824	5,279
19	Fort Worth ISD	474	582	1,131	4,837
20	Waxahachie ISD	659	576	911	9,975

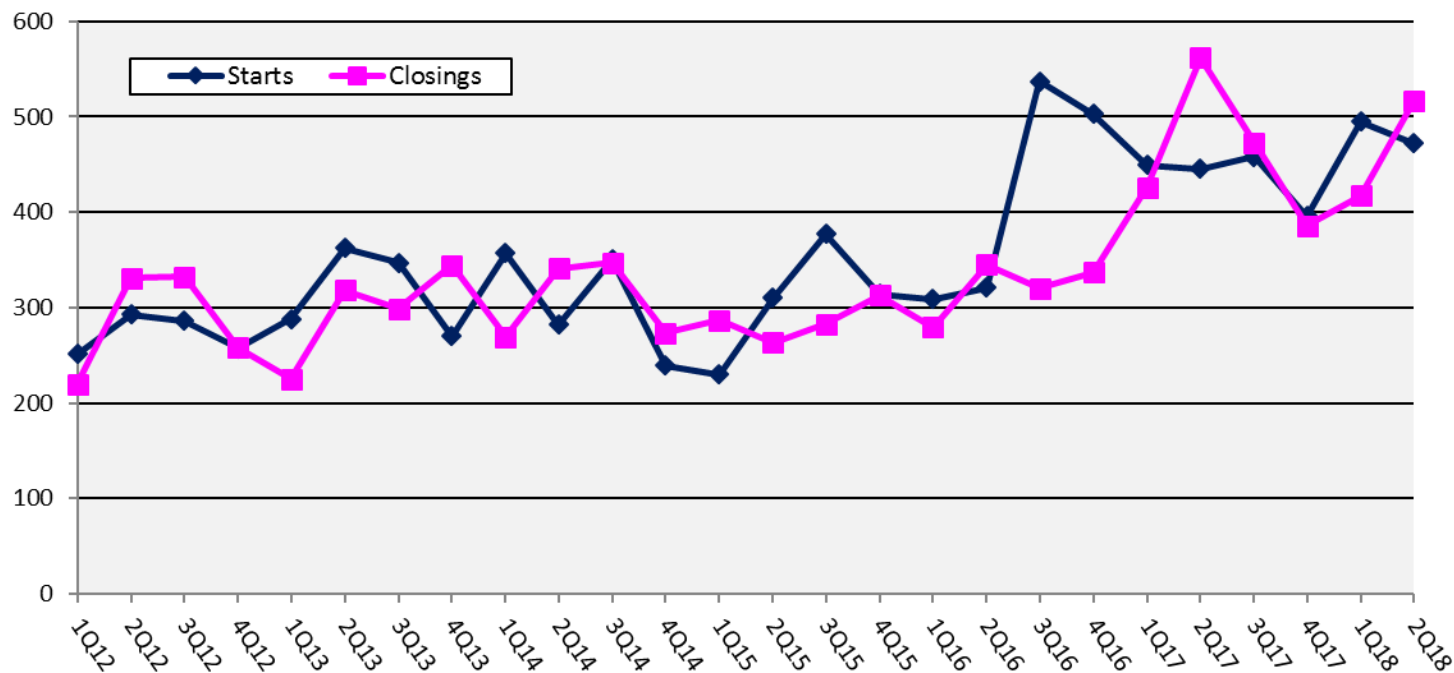
\*Adjusted based on additional research by Templeton Demographics staff





# New Housing Activity

## Northwest ISD



Starts	2012	2013	2014	2015	2016	2017	2018
1Q	251	288	357	230	309	449	495
2Q	293	362	282	310	321	445	472
3Q	286	347	350	377	537	458	
4Q	257	270	239	314	503	396	
Total	1,087	1,267	1,228	1,231	1,670	1,748	967

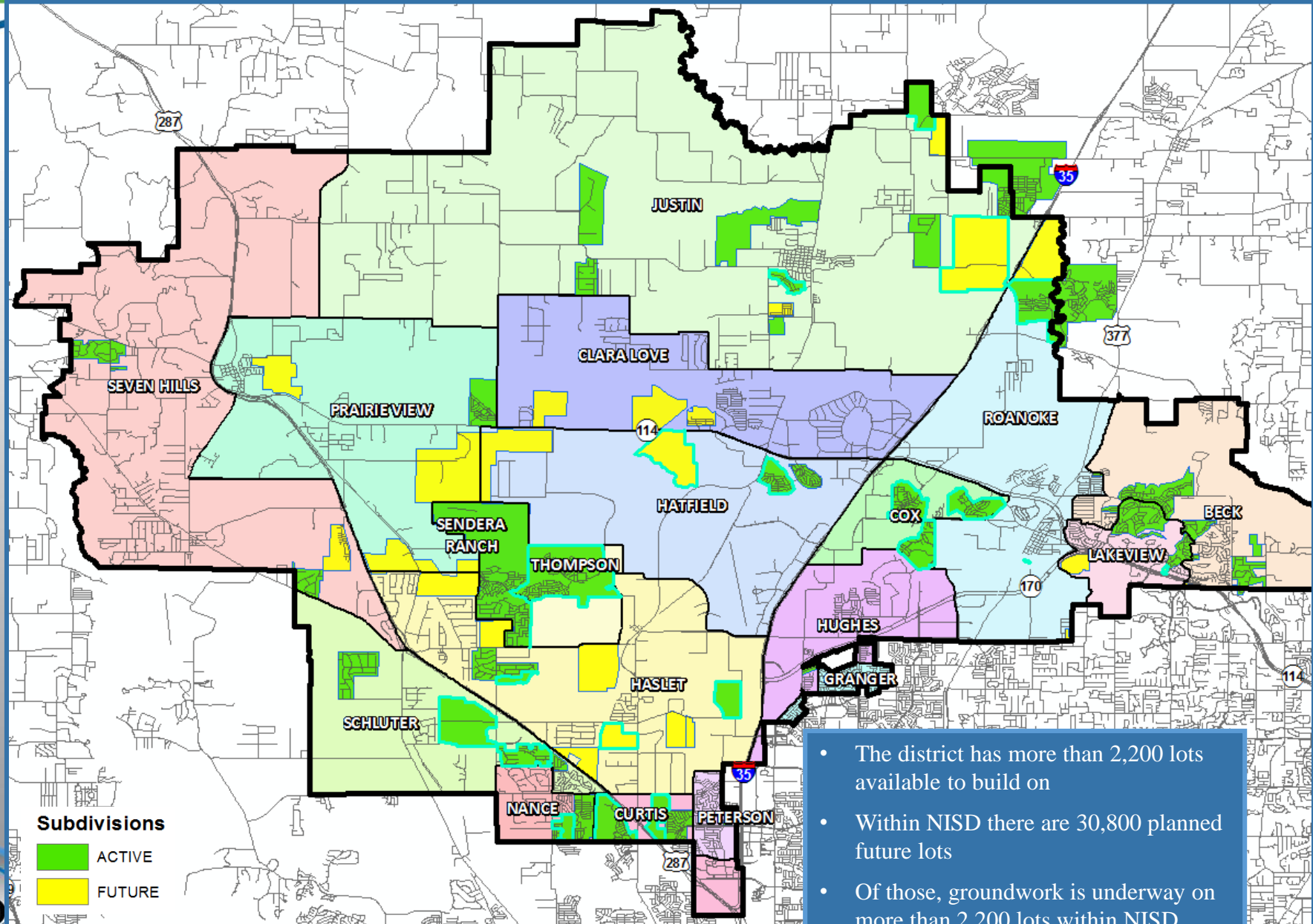
Closings	2012	2013	2014	2015	2016	2017	2018
1Q	220	225	269	287	279	426	417
2Q	331	318	341	263	345	562	517
3Q	332	299	347	283	320	473	
4Q	258	344	273	313	337	386	
Total	1,141	1,186	1,230	1,146	1,281	1,847	934

- Northwest ISD is on pace to start more than 1,900 new homes in 2018
- The district closed more than 500 new homes in 2Q18





# District Housing Overview





# Ten Year Forecast

## By Elementary Campus

Campus	Capacity	HISTORY	Sept 2017	ENROLLMENT PROJECTIONS									
		2016/17	2017/18	2018/19	2019/20	2020/21	2021/22	2022/23	2023/24	2024/25	2025/26	2026/27	2027/28
Beck Elementary	850	834	837	847	834	856	869	884	884	885	882	885	884
Clara Love Elementary	850	657	623	804	826	864	923	991	1,062	1,129	1,184	1,221	1,258
Cox Elementary	850	525	620	706	798	849	888	941	960	951	956	955	956
Curtis Elementary	850	0	0	391	499	622	692	727	741	753	758	768	793
Granger Elementary	850	935	927	832	837	850	861	864	870	872	871	872	875
Haslet Elementary	650	601	707	472	494	536	623	729	809	875	935	976	1,020
Hatfield Elementary	450	478	499	336	367	416	477	524	578	626	683	765	849
Hughes Elementary	850*	612	626	756	763	795	825	852	857	853	854	860	865
Justin Elementary	650	559	584	633	705	800	897	997	1,047	1,091	1,159	1,226	1,315
Lakeview Elementary	650	579	617	620	645	657	671	684	686	688	700	715	727
Nance Elementary	650	513	563	557	574	578	594	623	670	711	737	762	781
Peterson Elementary	850	734	776	811	844	835	842	837	846	861	865	868	853
Prairie View Elementary	650	422	449	450	489	505	542	590	651	737	825	915	1,024
Roanoke Elementary	850	722	745	773	805	849	921	966	983	1,009	1,033	1,058	1,085
Sendera Ranch Elementary**	650	566	564	691	703	726	746	768	842	921	1,016	1,146	1,305
Seven Hills Elementary	650	573	557	555	566	564	567	583	593	600	611	624	629
Schluter Elementary	850	671	717	760	825	882	931	977	1,021	1,078	1,123	1,180	1,240
Thompson Elementary**	650	582	683	621	675	729	791	814	848	896	943	984	1,018
<b>ELEMENTARY SCHOOL TOTALS</b>	<b>13,150</b>	<b>10,563</b>	<b>11,094</b>	<b>11,615</b>	<b>12,249</b>	<b>12,913</b>	<b>13,660</b>	<b>14,351</b>	<b>14,948</b>	<b>15,536</b>	<b>16,135</b>	<b>16,780</b>	<b>17,477</b>
Elementary Absolute Growth		365	531	521	634	664	747	691	597	588	599	645	697
Elementary Percent Growth		3.58%	5.03%	4.70%	5.46%	5.42%	5.78%	5.06%	4.16%	3.93%	3.86%	4.00%	4.15%

\*Capacity expansion opening in 2018/19

\*\*Additional capacity opening in 2019/20

Green box = within 5% of capacity

Yellow box = over capacity

The NISD Bond approved in May 2017 will assist  
with overcrowding for the next 3-4 years





# Ten Year Forecast

## By Secondary Campus

Campus	Capacity	HISTORY	Sept 2017	ENROLLMENT PROJECTIONS									
		2016/17	2017/18	2018/19	2019/20	2020/21	2021/22	2022/23	2023/24	2024/25	2025/26	2026/27	2027/28
Adams Middle School	1,200	0	0	1,097	1,216	1,367	1,455	1,540	1,622	1,729	1,828	1,894	1,938
Chisholm Trail Middle School	1,100	1,016	1,061	450	428	434	427	452	459	492	530	564	618
Gene Pike Middle School	1,100	830	936	1,013	1,063	1,124	1,196	1,276	1,365	1,480	1,587	1,713	1,818
Medlin Middle School	1,100	1,145	1,114	1,157	1,201	1,233	1,184	1,188	1,224	1,280	1,329	1,332	1,354
Tidwell Middle School	1,200	1,167	1,220	972	1,050	1,102	1,167	1,217	1,297	1,361	1,437	1,464	1,482
Wilson Middle School	1,200	972	1,053	997	1,057	1,101	1,146	1,221	1,334	1,437	1,514	1,598	1,694
<b>MIDDLE SCHOOL TOTALS</b>	<b>6,900</b>	<b>5,130</b>	<b>5,384</b>	<b>5,686</b>	<b>6,015</b>	<b>6,361</b>	<b>6,575</b>	<b>6,894</b>	<b>7,301</b>	<b>7,779</b>	<b>8,225</b>	<b>8,565</b>	<b>8,904</b>
Middle School Absolute Growth		332	254	302	329	346	214	319	407	478	446	340	339
Middle School Percent Growth		6.92%	4.95%	5.61%	5.79%	5.75%	3.36%	4.85%	5.90%	6.55%	5.73%	4.13%	3.96%
Northwest High School	2,525	2,009	1,761	1,844	1,937	1,991	2,043	2,076	2,167	2,250	2,375	2,529	2,662
Byron Nelson High School	2,400	2,553	2,524	2,581	2,592	2,704	2,860	3,016	3,159	3,239	3,299	3,456	3,615
Eaton High School	2,500	1,603	2,186	2,381	2,535	2,727	3,001	3,228	3,409	3,598	3,867	4,119	4,388
Steele Accelerated High School	450	142	144	144	144	144	144	144	144	144	144	144	144
Denton Creek		43	37	31	31	31	31	31	31	31	31	31	31
<b>HIGH SCHOOL TOTALS</b>	<b>7,875</b>	<b>6,351</b>	<b>6,656</b>	<b>6,985</b>	<b>7,243</b>	<b>7,601</b>	<b>8,083</b>	<b>8,499</b>	<b>8,914</b>	<b>9,266</b>	<b>9,720</b>	<b>10,283</b>	<b>10,844</b>
High School Absolute Growth		371	305	329	258	358	482	416	415	352	454	563	561
High School Percent Growth		6.20%	4.80%	4.94%	3.69%	4.94%	6.34%	5.15%	4.88%	3.95%	4.90%	5.79%	5.46%
<b>DISTRICT TOTALS</b>	<b>27,925</b>	<b>22,044</b>	<b>23,134</b>	<b>24,286</b>	<b>25,507</b>	<b>26,875</b>	<b>28,318</b>	<b>29,744</b>	<b>31,163</b>	<b>32,581</b>	<b>34,080</b>	<b>35,628</b>	<b>37,225</b>
District Absolute Growth		1,068	1,090	1,152	1,221	1,368	1,443	1,426	1,419	1,418	1,499	1,548	1,597
District Percent Growth		5.1%	4.9%	5.0%	5.0%	5.4%	5.4%	5.0%	4.8%	4.6%	4.6%	4.5%	4.5%

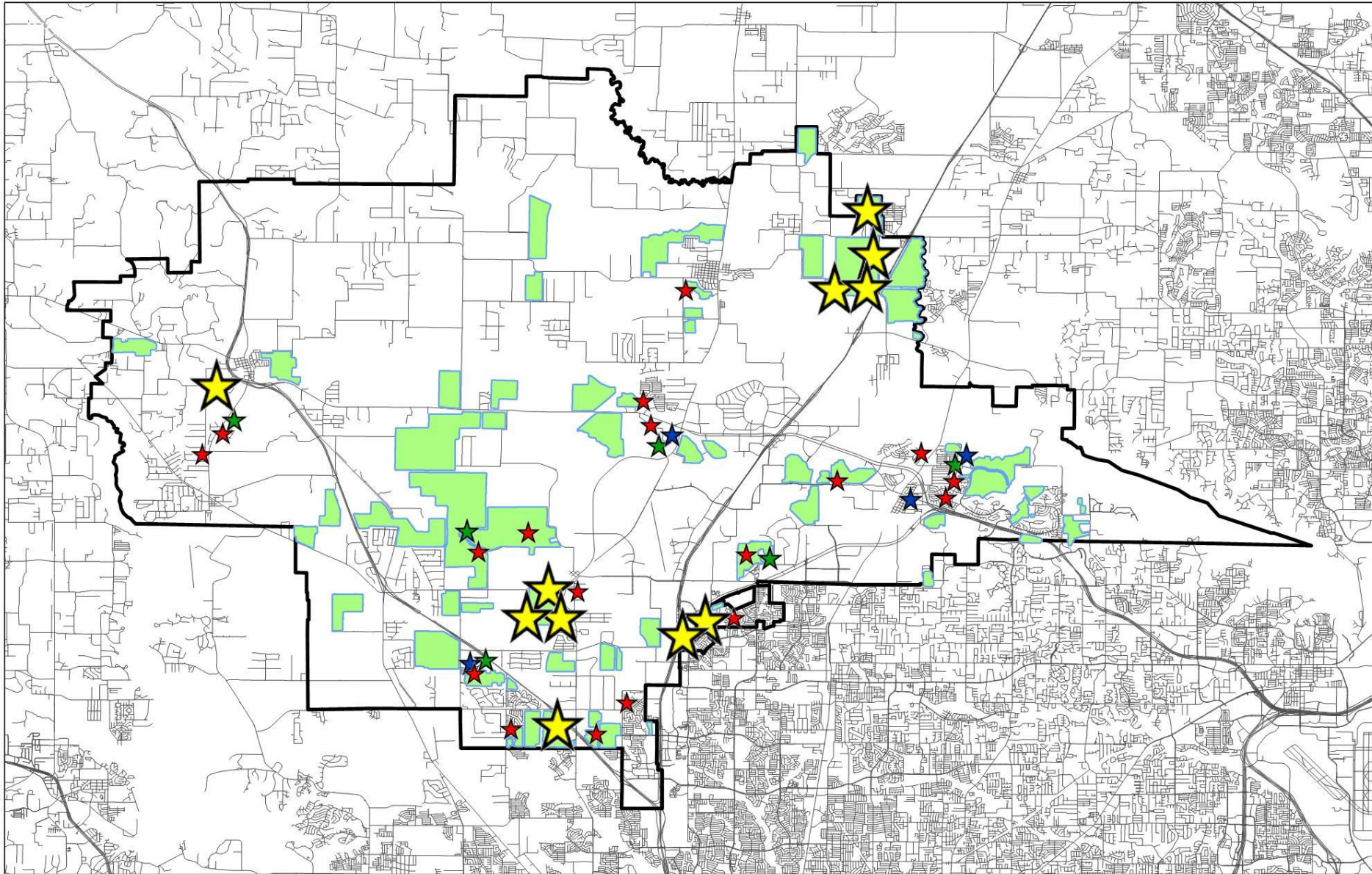
Green box = within 5% of capacity  
Yellow box = over capacity

The NISD Bond approved in May 2017 will assist  
with overcrowding for the next 3-4 years





# Land Purchases



The background of the slide is a dark red overlay on a photograph of a white rectangular sign with a black border. The sign features a graphic of three pedestrians crossing a street at the top. Below the graphic, the words 'KEEPING' and 'SCHOOLS' are written in large, bold, black capital letters. At the bottom of the sign, the word 'SAFE' is written in large, bold, black capital letters. The entire sign is tilted slightly to the right.

# **Northwest ISD Facilities**

## **Safety & Security**

# Safety and Security

To provide support, intervention, and guidance in all matters related to Safety and Security:



- Prevention, Preparation, and Planning
- Safety and Security Practices, Processes, & Procedures
- Incident Response/Intervention/Investigation/Resolution
- Support & Monitoring & Tracking – Audits, Drills, Training



# Safety and Security Bond Items

## Safety and Security of our Students and Staff: \$14,100,000

- Entrance and reception area security enhancements
- Classroom door hardware upgrades - intruder safety function
- Access control improvements and intrusion alarms
- Security camera enhancements and replacements
- Intercom system and phone system improvements

# School Resource Officers


- **Trophy Club Police Department:** (2 Officers – Medlin & BNHS)
- **Roanoke Police Department:** (2 Officer – Steele & BNHS)
- **Wise County Sheriff:** (1 Officer – CTMS)
- **City of Fort Worth:** (9 Officers – 2 @ NHS, 2 @ Eaton) (1 each @ Pike, Tidwell, Wilson, Adams, DAEP)
- **2 Security Guards for NHS, BNHS, and EHS**

# 5 Safety and Security Focus Areas

1. Safety & Security Training Sessions with Campus Leadership and Staff
2. Deployment of S&S Protocols to Integrate New Technology & Resources
3. Continued Implementation of the 2017 Bond District-Wide S&S Upgrades
4. Equipping Law Enforcement Partners with NISD S&S Tools and Resources
5. Continuous Pursuit of Establishing a NISD Police Department



# Navigate Prepared



NORTHWEST ISD | CRITICAL INFORMATION SYSTEM

Welcome McClure, Tim   Sign Out

NaviGate Prepared

3.) No students with you, inside gunshots	! Intruder/Hostile	Not used yet by this building	Visible to All	<input type="checkbox"/> Preview
4.) In hall with students, gunshots			Visible to All	<input type="checkbox"/> Preview
5.) With students outside, hear gunshots in the sch			Visible to All	<input type="checkbox"/> Preview
6.) Outside with a tornado approaching			Visible to All	<input type="checkbox"/> Preview
7.) Man walking on campus with knife			Visible to All	<input type="checkbox"/> Preview
8.) Alone with angry parent in hallway			Visible to All	<input type="checkbox"/> Preview
9.) Alone with angry parent in front office			Visible to All	<input type="checkbox"/> Preview
10.) With a student, angry parent in front office			Visible to All	<input type="checkbox"/> Preview
11.) Classroom teaching, student pulls gun, aims at s			Visible to All	<input type="checkbox"/> Preview
12.) Classroom teaching, student pulls gun, aims at y			Visible to All	<input type="checkbox"/> Preview
13.) Cafeteria kitchen fire			Visible to All	<input type="checkbox"/> Preview
14.) Bathroom waste water blocking hallway			Visible to All	<input type="checkbox"/> Preview
15.) School assembly explosion and flames			Visible to All	<input type="checkbox"/> Preview
16.) Gas Odor			Visible to All	<input type="checkbox"/> Preview
17.) Student hostage	! Intruder/Hostile	Not used yet by this building	Visible to All	<input type="checkbox"/> Preview
18.) Rumor of bomb in locker	Bomb Threat	Not used yet by this building	Visible to All	<input type="checkbox"/> Preview

Scenario Preview

Student hostage

Intruder/Hostile Scenario

Several students are running toward you shouting that a man grabbed a fellow student and hit a teacher. The man is in a classroom down the hall holding the student hostage. No one knows exactly how many students are in the room or what the adult wants. What do you do?

Mark as Used

Close



**Questions**