

OUR MISSION

CLEARR VISSION Support Services, Inc. believes that with the correct structure, education, support and guidance, the individual can gain self-awareness, self-control, and the self-confidence needed to grow, evolve, and actively contribute to society.

This belief and philosophy extends to all services provided by CVSS. As such, it is the desire of CVSS to provide a well-structured atmosphere and a holistic approach in developing an individualized treatment plan designed for optimal success.

CVSS endeavors to preserve the dignity, to protect the rights, and to demonstrate respect through high quality service to all participating individuals. With integrity, dedication, and persistence, CVSS will earnestly seek to empower, uplift, and develop the untapped potential in every CVSS member.

OUR COMMITMENT

CLEARR VISSION Support Services, Inc. understands that every person is capable of learning. This principle amply expresses the fullness of potential that rests in every individual. It is our singular aspiration to actualize this principle through sound, individualized treatment plans and coordination of care that will uniquely fit the needs of each individual and associated family unit.

Other Services Offered:
Day Support
Community Engagement
Residential

Clearr Vission
Support Services, Inc.
4825 South Laburnum Avenue
Richmond, Virginia 23231

CLEARR VISSION SUPPORT SERVICES, INC.



4825 South Laburnum Avenue
Richmond, Virginia 23231

Phone: 804.328.1784 Fax: 804.328.1793

Email: Clearrvission@clearrvission.com

www.clearrvission.com

**VA DEPARTMENT OF BEHAVIORAL HEALTH AND
DEVELOPMENTAL SERVICES PROVIDER**

“We See The Untapped Potential”

WHY CHOOSE CLEARR VISSION...

THE CLEARR VISSION DIFFERENCE

CVSS is a trusted name that has consistently been awarded a triennial license by The Department of Behavioral Health and Developmental Services. With over 12 years in Mental Health, CVSS has acquired a highly trained and well qualified team of personnel in which over 75% possess a Master's degree or above. Collectively, this dedicated team of professionals represents many years of diversified experience and renders quality service.

CVSS Intensive In-Home Services (IIH)

is provided for children/adolescents under age 21 in the home. Services are designed to specifically improve family dynamics, provide modeling, and offer psychoeducation and deliver the clinically necessary interventions that increase functional and therapeutic familial relationships.

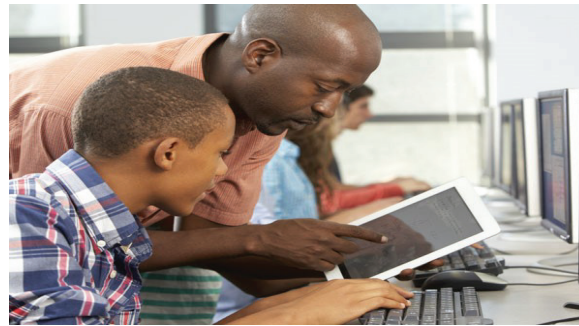
SERVICE ELIGIBILITY

- Youth has diagnosis supporting mental, behavioral, emotional illness
- Youth is at risk of psychiatric hospitalization or out of home placement
- Youth has received interventions from mental health, social services, or judicial system
- Youth has difficulty recognizing personal danger or inappropriate social behavior
- Services more intensive than outpatient clinic care are needed

CVSS Therapeutic Day Treatment (TDT)

is provided for children/adolescents in the school. Services are designed to implement therapeutic interventions and structure to individuals whose symptoms are causing significant functional impairments in major life activities.

This service includes clinical evaluation, medication education and management, social skills enhancement, and individual and group counseling provided in a structured setting.



SERVICE ELIGIBILITY

- Youth diagnosis with mental, behavioral, and emotional illness
- Youth at risk of psychiatric hospitalization or out of home placement
- Youth having received interventions from mental health, social services, or judicial system
- Youth has difficulty recognizing personal danger or inappropriate social behavior
- Youth's behavior/emotional problems can not be contained in a classroom without TDT support
- Youth in jeopardy of receiving homebound instruction

CVSS Mental Health Skill Building Services

(MHSS) is a service provided for adults 21 and older based within a setting that allows the individual's community living needs to be addressed. Services are designed to provide goal directed training to enable individuals to achieve and maintain community stability and independence.

Training shall be in the following areas: functional skills and appropriate behavior related to the individual's health and safety; activities of daily living, use of community resources; medication management; and monitoring health, nutrition, and physical condition.

SERVICE ELIGIBILITY

- Individual must have a diagnosis of: Schizophrenia (or other psychotic disorder) or Major Depressive Disorder-Recurrent or Bipolar I/Bipolar II or any other mental health disorder a physician has documented within the past year that is a serious mental illness
- Individual shall require individualized training in acquiring basic living skills
- Individual shall have a prior history of any of the following: psychiatric hospitalization; residential crisis stabilization, ICT or Program of Assertive Community Treatment services; placement in a psychiatric residential treatment facility, or TDO
- Individual shall have had a prescription for anti-psychotic, mood stabilizing, or antidepressant medications within the 12 months prior