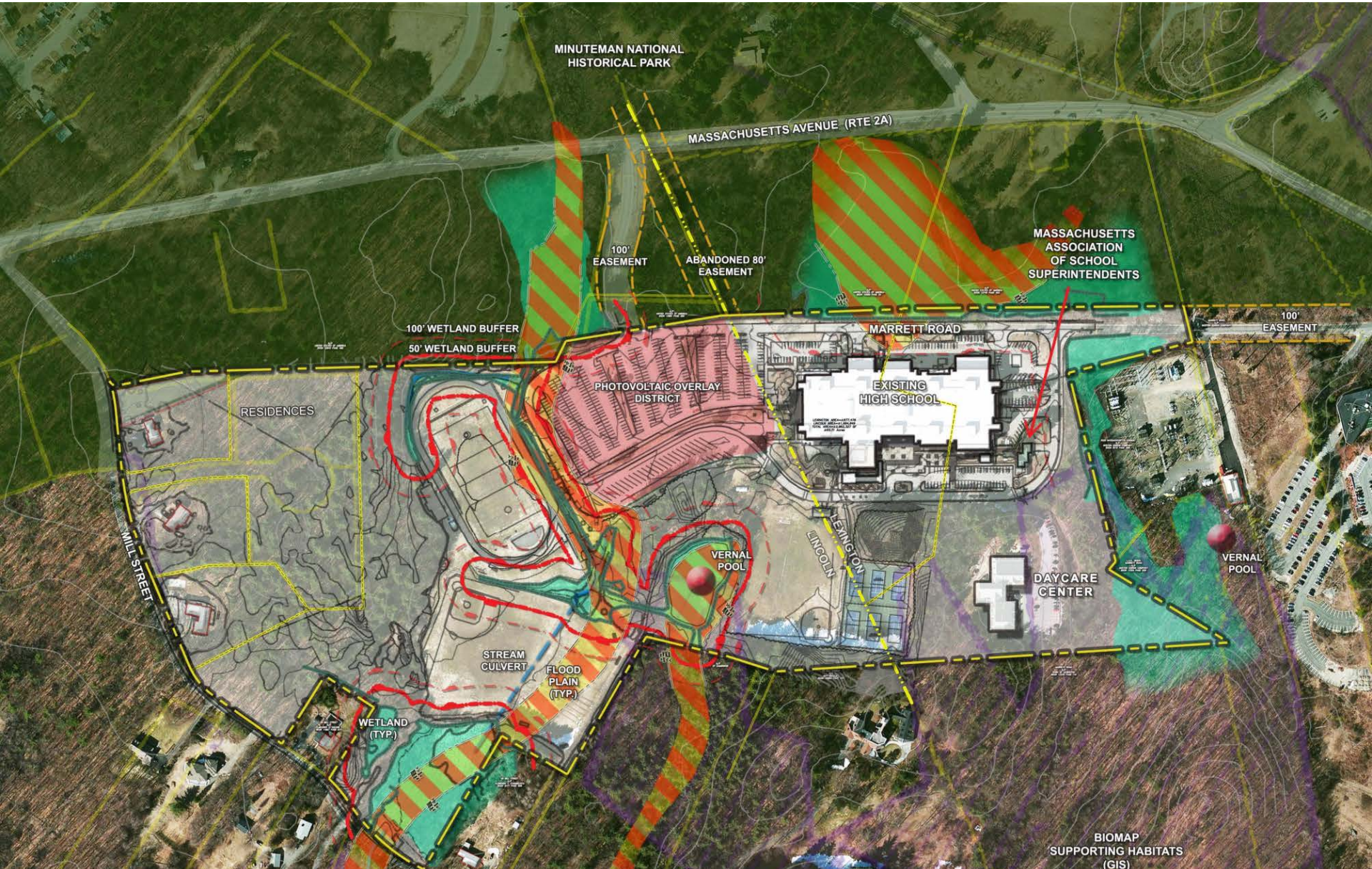






# EXISTING SITE PLAN



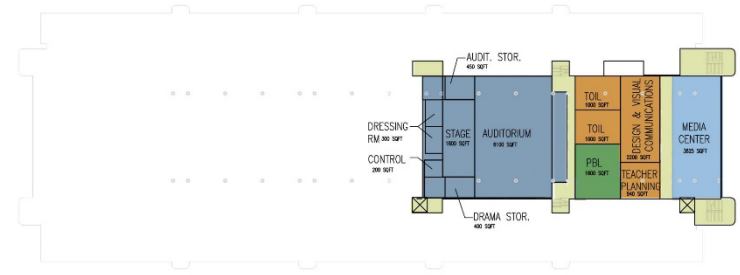
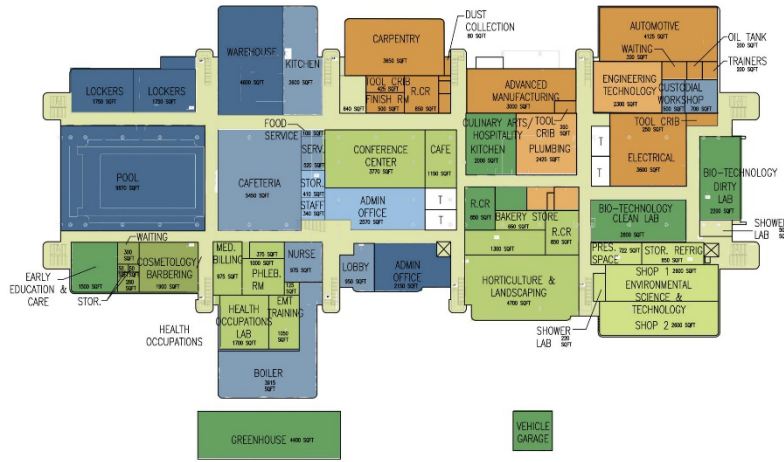
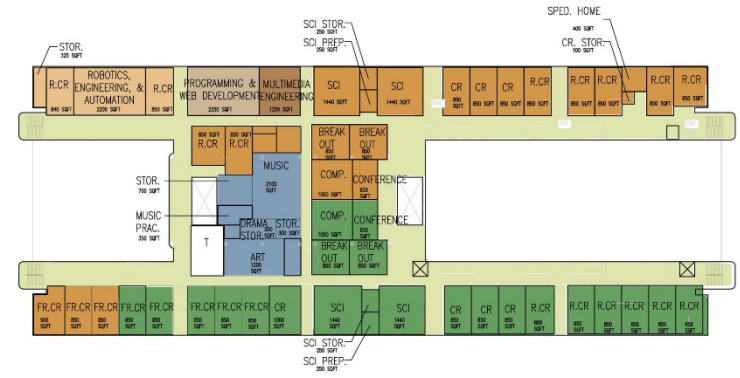
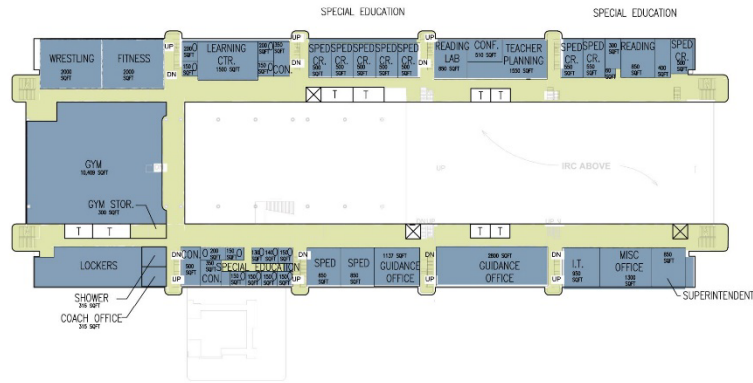
**MINUTEMAN**  
A REVOLUTION IN LEARNING





# OPTION F – 628 STUDENT – RENOVATION

- ENGINEERING, CONSTRUCTION & TRADES ACADEMY
- SHARED RESOURCES
- LIFE SCIENCES & SERVICES ACADEMY



305,808 SF

MAIN LEVEL



**MINUTEMAN**  
A REVOLUTION IN LEARNING

May 11, 2015





# OPTION F – 628 STUDENT – RENOVATION



SITE PLAN-RENOVATION  
NOVEMBER 3, 2014 PROGRESS



**MINUTEMAN**  
A REVOLUTION IN LEARNING

**KÆSTLE BOOS** **SKANSKA**  
associates, inc.



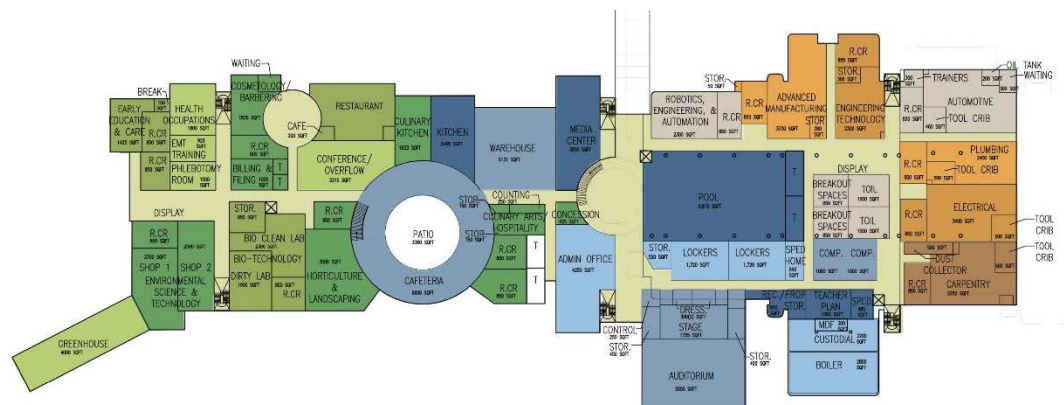
## OPTION G – 628 STUDENT – RENOVATION/ADDITION

ENGINEERING, CONSTRUCTION  
& TRADES ACADEMY

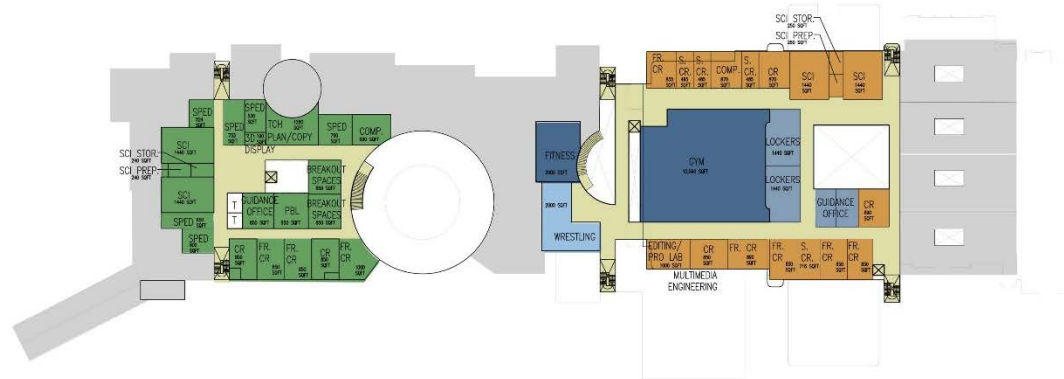
## SHARED RESOURCES

LIFE SCIENCES & SERVICES  
ACADEMY

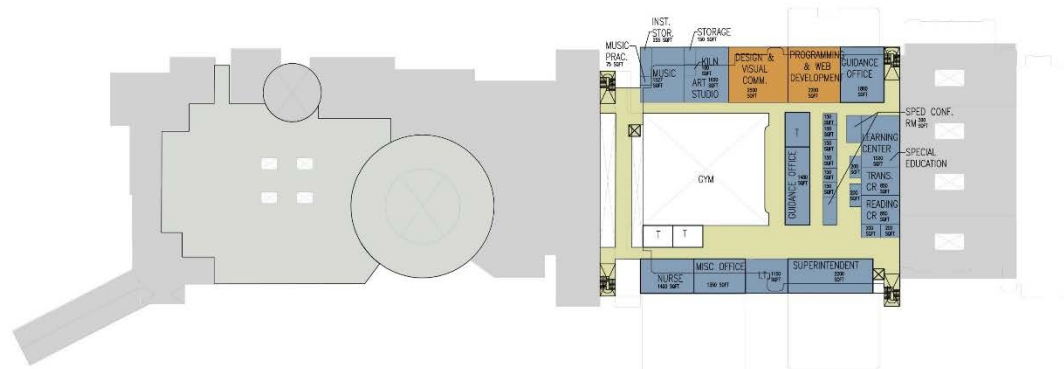
M A I N L E V E L



## SECOND LEVEL



### THIRD LEVEL

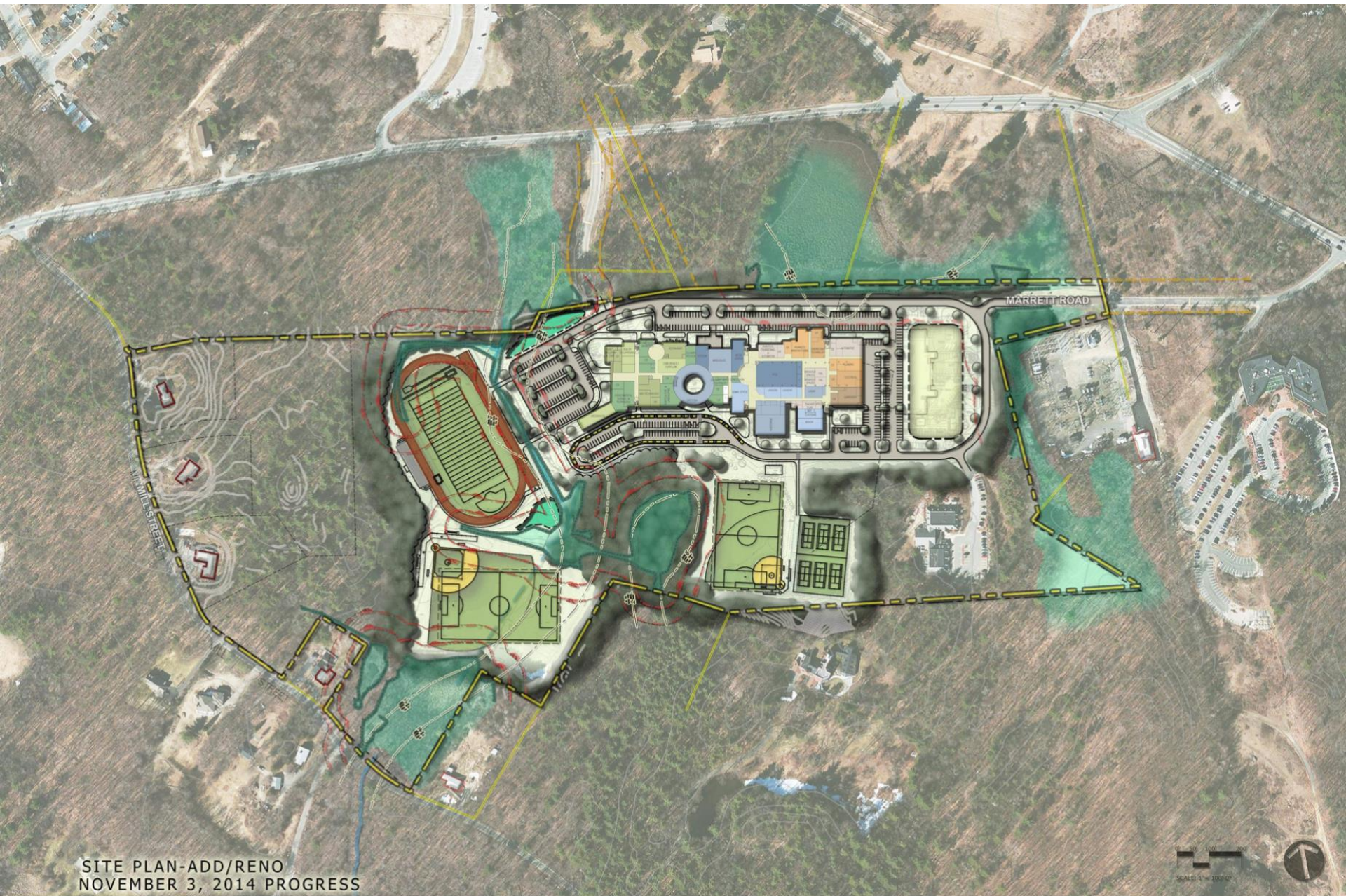


284,512 SF





# OPTION G – 628 STUDENT – RENOVATION/ADDITION







## OPTION H – 628 STUDENT – NEW







SITE PLAN-NEW  
NOVEMBER 3, 2014 PROGRESS



**MINUTEMAN**  
A REVOLUTION IN LEARNING









Conceptual Project Budget  
 Minuteman Regional Vocational Technical High School  
 11-May-15 628 Student Population

	<u>Renovation</u> 305,808 SF.	<u>Renovation/ Addition</u> 284,512 SF.	<u>New Construction with Exist Bldg Demo</u> 242,893 SF.
<b>Total Project Budget</b>	<b>\$176,547,602</b>	<b>\$175,333,834</b>	<b>\$144,922,478</b>
<b>Project Duration</b>	<b>60 Months</b>	<b>48 Months</b>	<b>32 Months</b>

Total Project Budget includes all construction costs, contingencies(construction & owners),soft costs & escalation.

