

MINUTEMAN VOCATIONAL TECHNICAL REGIONAL HIGH SCHOOL PROGRESS

April 23rd, 2018 – May 14th, 2018

SKANSKA

Gilbane

KAESTLE BOOS
associates, inc
architects

 **MINUTEMAN**
A REVOLUTION IN LEARNING

May 3rd

View of Area A & B – West Elevation
Exterior light metal framing
substantially complete. First lift of
CMU to bond beam complete.



May 14th

View of Area A & B – East Elevation
CMU back-up wall construction in
progress.



May 14th
View of Area A & B – 2nd Level
Concrete slab on deck placed on
4/25/18. Exterior light gauge
framing and installation of MEP
hangers in progress.



May 11-14th
View of Area A & B – Low Roof
Roofing system installation in
progress working from North to
South.



May 14th
View of Area A & B – 1st Floor
Excavation/Backfill for installation of
underground utilities nearing
completion.



April 24th

View of Area G – Facing South
Concrete slab on deck placement.
Upper Level Classroom Space



May 2nd

View of Area G – Roof Level
Exterior light metal framing roof
parapet framing substantially
complete. Framing activities on high
in progress.



May 14th

View of Area G – Roof Level
Exterior light gauge metal framing
roof parapet framing in progress on
the high roof level.



May 14th

View of Area G – 2nd Floor
Exterior light gauge metal framing
commenced on the 2nd floor level.



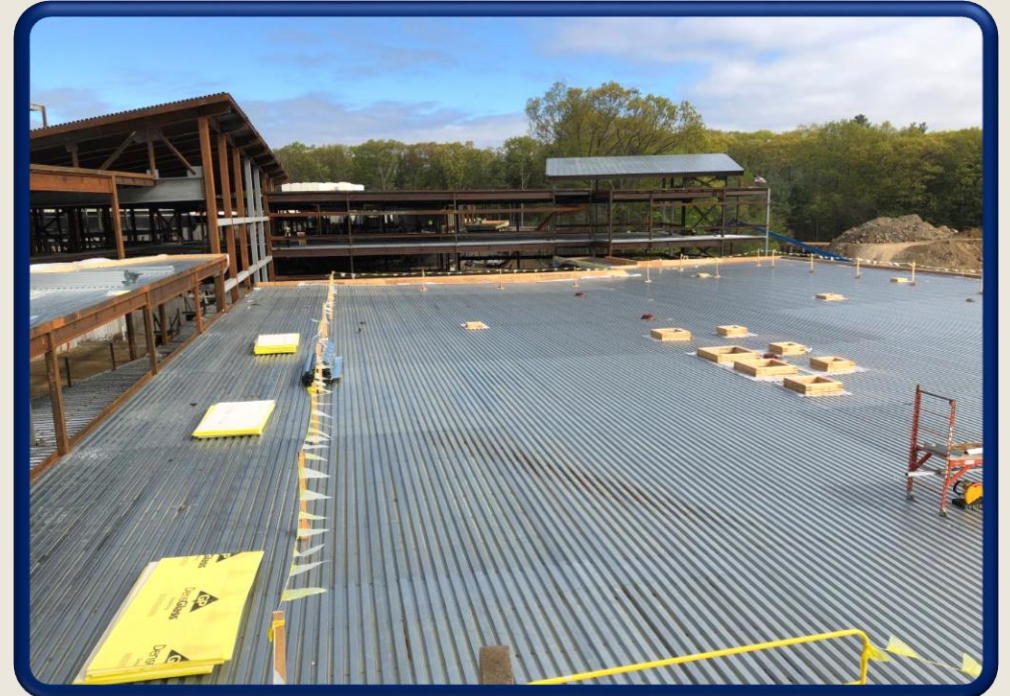
May 14th

View of Area E – Bridge Level
Roof Parapet framing & insulation
activities in progress.



May 14th

View of Area F – Roof Level
Roof Parapet framing & sheathing
substantially complete. Roof blocking
for MEP equipment in progress.



May 9th

View of Areas C & D – Facing East
Steel erection of these areas have been completed, decking and detailing activities in progress for both Areas.



May 7th – 11th
Safety Week



May 7th – 11th
Safety Week



May 7th – 11th
Safety Week



May Construction Schedule Look Ahead:

- **Area A+B**
 - Complete excavation & backfill for under slab utilities.
 - Place concrete slab on grade.
 - Complete roof parapet framing and wood sheathing.
 - Complete installation of blocking for roof top mechanical equipment.
 - Continue exterior LGMF framing walls on 2nd floor level.
 - Continue exterior CMU masonry walls.
 - Continue roofing installation activities.
- **Area G**
 - Complete excavation & backfill for under slab utilities.
 - Place concrete slab on grade.
 - Complete roof parapet framing and wood sheathing.
 - Start exterior LGMF framing walls on the 2nd Floor.
 - Complete installation of blocking for roof top mechanical equipment.
 - Commence exterior CMU masonry walls and stairwell shafts.
 - Commence roofing installation activities.
- **Area E**
 - E Lower - Place concrete slab on deck on Level 2-Bridge Level.
 - E Upper – Place concrete slab on deck on Level 2.
- **Area F**
 - Complete roof parapet framing and sheathing.
 - Continue installation of blocking for roof top mechanical equipment.
- **Area C+D+E**
 - Complete steel decking and detailing activities in these remaining areas.
 - Commence roof parapet framing and wood sheathing.