

MINUTEMAN VOCATIONAL TECHNICAL REGIONAL HIGH SCHOOL PROGRESS

January 16th, 2018 – February 12th, 2018

SKANSKA

Gilbane

KAESTLE BOOS
associates, inc
architects

 **MINUTEMAN**
A REVOLUTION IN LEARNING

February 9th

View of Area A & B - Facing South
Steel Erection Complete, Decking &
Detail Substantially Complete



February 9th

View of Area B - Facing West
Steel Erection Complete. 3rd Party
Inspection of steel connections in
progress.



February 1st

View of Area B – Facing West
Steel Erection Complete. Decking &
Detailing Substantially Complete



January 24th
View of Area G – Facing North

Steel Erection in Progress



February 9th
View of Area G – Facing North
Steel Erection Complete, Decking &
Detailing in Progress



February 1st

View of Area F – Facing North

Steel Erection in Progress. Setting of
Steel Columns.



February 9th

View of Area F – Facing North

Steel Erection in Progress working
North towards center of building.



February 9th

View of Area F – Facing West

Steel Erection in Progress working
North towards center of building.



February 9th
View of Area C – Facing East
Foundations Complete in Lower Level
of Theater



February 9th

View of Area E - Facing South

Elevator Pit Placed & Protected. Forming & Reinforcing of Cafeteria Stair & Stem Wall in progress.

Footings for Student Breakout space placed & protected

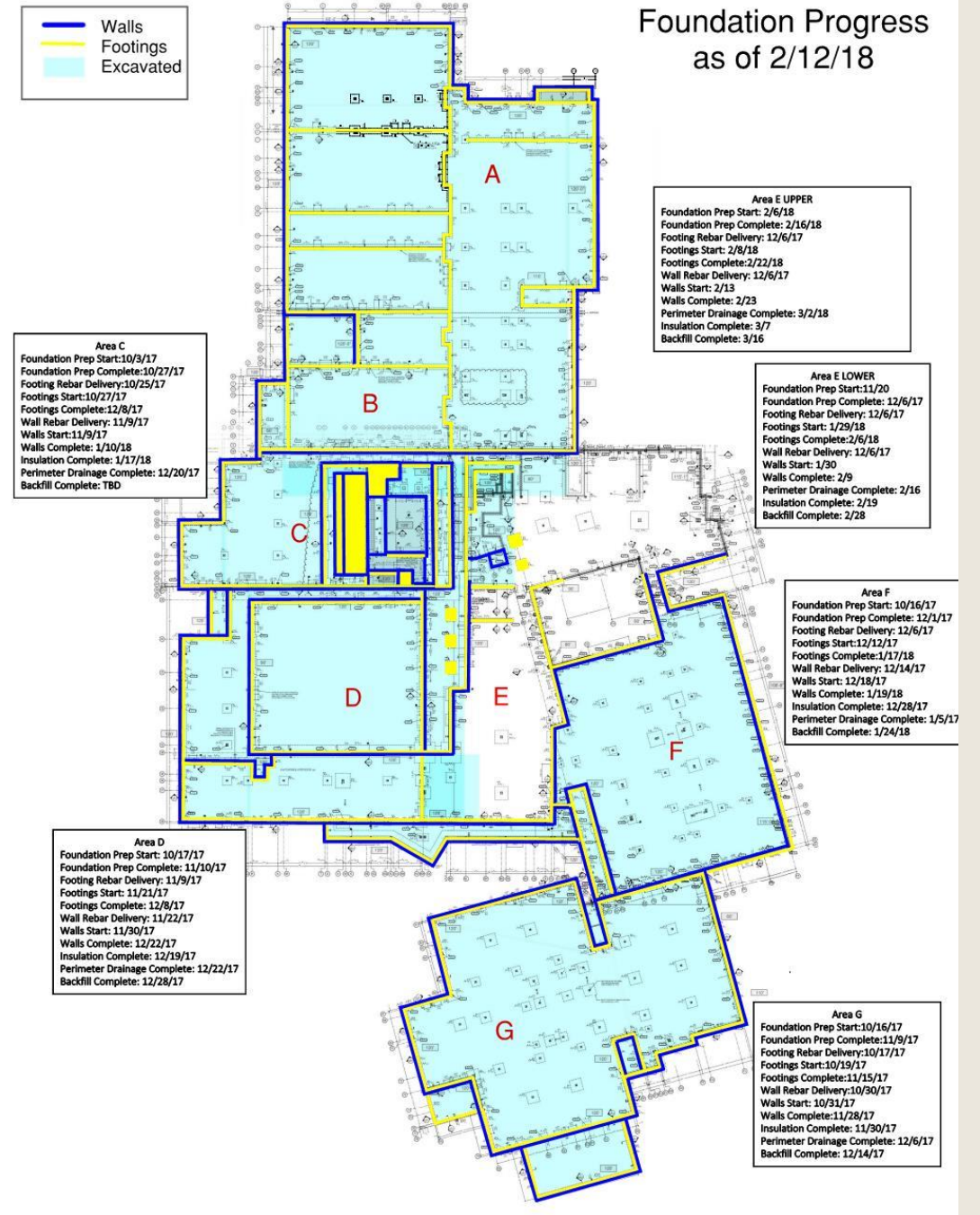


February 9th
View of Area E – Facing West
Elevator Pit, Cafeteria Stair and Student
Breakout Area in the background.

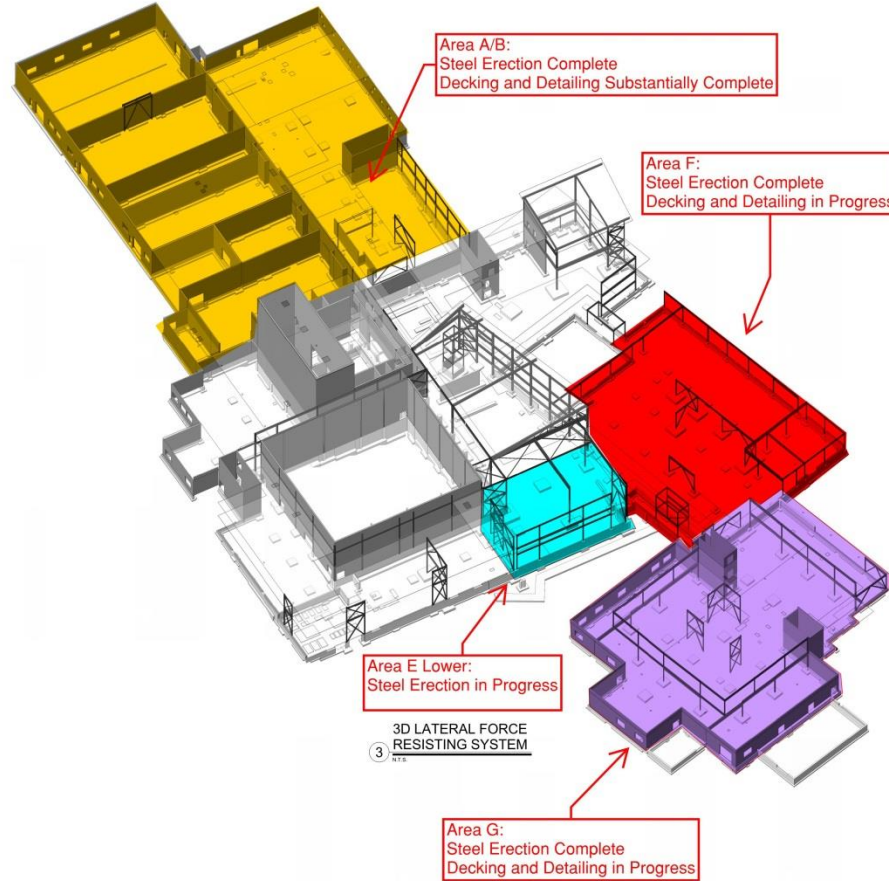
Stairwell Foundations being formed and
reinforced in foreground.



Excavation & Foundation Progress 2/12/18



Steel Erection Progress 2/12/18



KAESTLE BOOS
associates, inc

418 State Road, P.O. Box 2380, New Britain, CT 06020-2380
Phone: 860-225-0381 Fax: 860-225-0333
325 Frothingham Street, Suite 105, Frothingham, MA 02038
Phone: 508-949-9000 Fax: 508-949-9007
Email: kba@kaestleboos.com Web: www.kba-architects.com

odeh 1223 Mineral Spring Avenue
North Providence, RI 02904
Phone: 401-724-1771 Fax: 401-724-1981
1975 Central Expressway
www.odeh-engineers.com

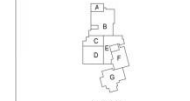
ISSUE DATE
JUNE 18, 2017

PHASE 2 STRUCTURAL BO

REVISION DATE

NO.	DATE	BY	DESCRIPTION
1	AUGUST 14, 2017	JM	ISSUE

FOR ALL ABBREVIATIONS, SYMBOL LEGENDS,
AND GENERAL NOTES SEE SHEET RD.01



MINUTEMAN
REGIONAL VOC.
TECH HIGH
SCHOOL
758 Marrett Rd
Lexington, MA
02424

PROJECT NO: 1300102 DRAWN BY: ROBERT

**DESIGN LOADS &
CRITERIA**

ISSUED BY:
S0.02

DATE: 02/12/2018

Steel Erection Progress
as of 2/12/18