

WALK - IN SPECIFICATIONS



WALK-IN
OVERALL SIZE: 20'-9" X 15'-11 1/2" X 8'-6 1/4" (INDOOR)

PANELS
FOAMED IN PLACE URETHANE FOAM 4"

EXTERIOR FINISH
WALL: GALVALUME - EMBOSSED 26 GA
TOP: GALVALUME - EMBOSSED 26 GA
FLOOR: GALVALUME - EMBOSSED 26 GA

INTERIOR FINISH
WALL: GALVALUME - EMBOSSED WHITE 26GA.
TOP: GALVALUME - EMBOSSED WHITE 26GA.

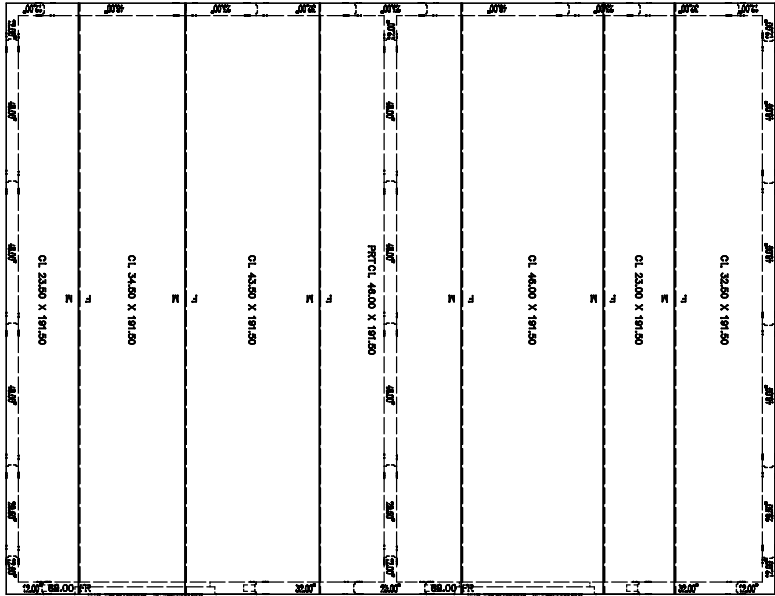
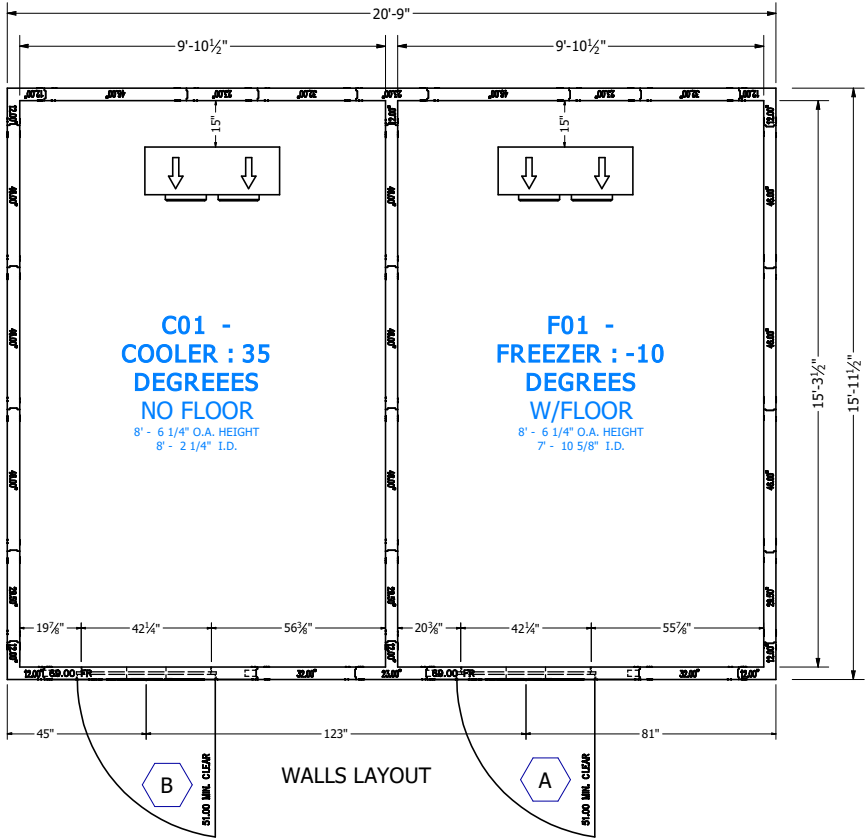
FLOOR TYPE
F01 FREEZER :
STANDARD 1000# ERA
ALUMINUM - SMOOTH ALUMINUM .100
WITH FLOOR OVERLAY - FULL COMPARTMENT, 1/8" ALUMINUM - DIAMOND TREAD (.125)

C01 COOLER : SCREED, VINYL 4" X 4" HIGH

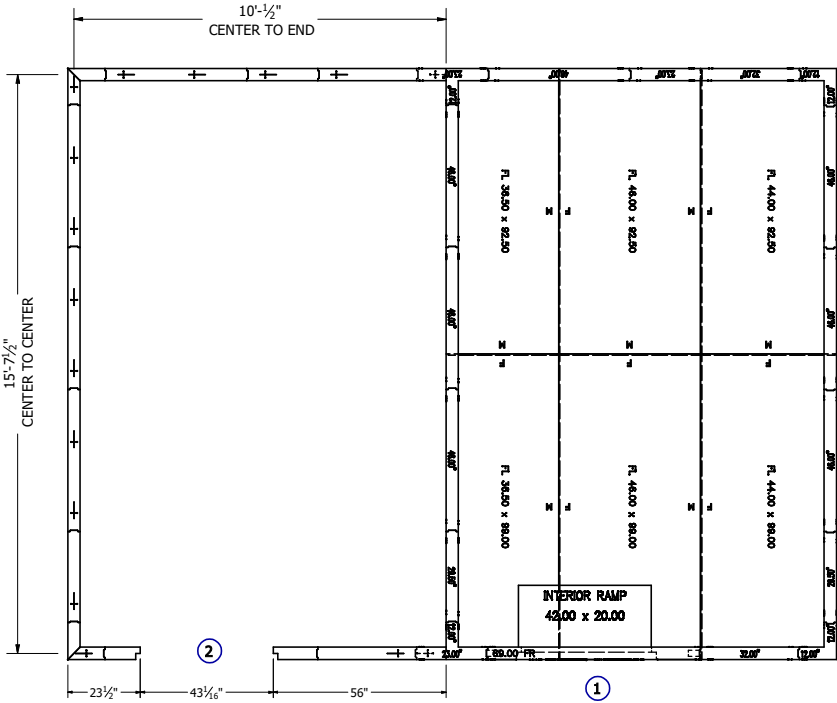
WALK-IN ACCESSORIES
(1) AIR SHIELD (SHIPS LOOSE)
(20) LF, COVE BASE, GALVALUME EMBOSSED 26 GA 1.25 X 4.25
(85) LF, COVE BASE, GALVALUME EMBOSSED WHITE 26 GA 1.25 X 4.25
(4) LIGHT FIXTURE - KASON 1809 LED 115V/220V
(6) TRIM ANGLED 3" X 3" X 8FT GALVALUME EMBOSSED 26 GA
(18 LF) 4" X 4" "B"
(22 LF) 2" X 12" "L"
(36) SF, WAINSCOT ALUMINUM DIAMOND TREAD .063
36" AFF ACROSS FRONT

REFRIGERATION
F01 FREEZER :
KPC299LZOP-2E, R404A, VOLTS: 208-230-60-1,BTU:9370
KEL26-105-2ECAFOEM-PR-4 VOLTS: 208-230-60-1,BTU:10369
TEMP: WALK-IN -10,AMBIENT TEMP: 100

C01 COOLER :
KPC69MZOP-2E, R404A, VOLTS: 208-230-60-1,BTU:8710
KAM26-094-1ECAFOEM-PR-4 VOLTS: 115-60-1,BTU:9547
TEMP: WALK-IN 35,AMBIENT TEMP: 100



CEILING LAYOUT



FLOORS & SCREEDS LAYOUT

! ATTENTION

- SUBMITTAL DRAWING NOT INTENDED FOR INSTALLATION.
AS-BUILT DRAWING FOR INSTALLATION WILL BE AVAILABLE AFTER ORDER IS PLACED. HARD COPY OF AS-BUILT DRAWING WILL BE IN HARDWARE BOX WITH WALK-IN SHIPMENT TO JOBSITE. ALL AS-BUILT DRAWINGS SHOW PART NUMBERS AND ID LABELS ON PLAN VIEWS.
- ALL WALK-INS ARE DESIGNED FOR INDOOR APPLICATION UNLESS NOTED OTHERWISE
- PENETRATIONS AND SEALING OF ARE THE RESPONSIBILITY OF OTHERS
- ALLOW 2" MINIMUM CLEARANCE WITH AIRFLOW OF 5 CFM PER 100 SQ FT AROUND ENTIRE PANEL SURFACES. INDOOR WALK-INS REQUIRE A 75°F AMBIENT AND 55% RELATIVE HUMIDITY OR LESS AROUND THE EXTERIOR OF THE WALK-IN.
- GENERAL CONTRACTOR TO REFER TO DESIGN AND SPECIFICATION MANUAL FOR FLOOR DETAIL INFORMATION
- QUARRY TILE OR CONCRETE FLOOR APPLICATIONS: METAL PANEL FACING MAY BE SUSCEPTIBLE TO STAINING DUE TO EXCESSIVE MOISTURE CREATED BY THE HYDRATION OF CONCRETE TYPE MATERIALS. IT IS ABSOLUTELY NECESSARY THAT EACH ROOM BE PROPERLY VENTILATED. SPECIAL PRECAUTIONS MUST ALSO BE TAKEN WHEN USING MURIATIC ACID DUE TO EFFECTS HYDROCHLORIC FUMES HAVE ON METAL MATERIALS
- PANEL LAYOUT MAY CHANGE BASED ON OPTIMAL MANUFACTURING STANDARDS
- WALK-IN TOP IS NOT DESIGNED FOR FOOT TRAFFIC OR STORAGE UNLESS NOTED OTHERWISE
- IF CONDENSING UNIT IS LOCATED IN THE INTERIOR OF BUILDING A MINIMUM OF 24" OF CLEARANCE IS REQUIRED AROUND TOP AND SIDES
- FLOOR, CURB, AND FIT DETAILS ARE FOR GENERAL REFERENCE ONLY. THESE DRAWINGS SHOULD NOT BE USED OR INCORPORATED IN THE DESIGN OR PREPARATION OF THE INSULATED FLOOR, SUB-SLAB OR CURBS, WITHOUT HAVING THE DESIGN REVIEWED BY A QUALIFIED ENGINEER. ALL FOOTINGS, FOUNDATION WALLS AND CONCRETE WEAR SLABS ARE THE RESPONSIBILITY OF THE BUILDING ENGINEER OR ARCHITECT.
- THE FOAM PLASTIC USED IN THIS PRODUCT COMPLIES TO THE IBC SECTION 2603 AS FOLLOWS: FLAME SPREAD RATING: 20; SMOKE DEVELOPED RATING: 450; FLASH IGNITION TEMPERATURE RATING: 915°F; SPONTANEOUS IGNITION TEMPERATURE RATING: 950°F.
- R-VALUES MEET DOE REQUIREMENTS AND ARE ASTM C518 TESTED. COOLER R-VALUES ARE R-29 FOR 4" THICK, R-36 FOR 5" THICK, AND R-44 FOR 6" THICK PANELS. FREEZER R-VALUES ARE R-32 FOR 4" THICK, R-40 FOR 5" THICK, R-48 FOR 6" THICK PANELS, AND R-29 FOR 4" FLOORS.
- FLOORS NOT DESIGNED FOR WET MOPPING, PALLET JACKS, OR FORKLIFT TRAFFIC.

FOR APPROVAL
YOU MUST REVIEW ALL NOTES, DETAILS, DIMENSIONS,
FINISHES, DOORS SIZES, LOCATIONS AND SWINGS

- ☐ **APPROVAL**- NO CHANGE REQUIRED, MANUFACTURE AS DRAWN.
- ☐ **APPROVED AS NOTED**- MAKE REQUIRED CHANGES AND MANUFACTURE AS DRAWN.
- ☐ **NOT APPROVED**- DESIGN CHANGES REQUIRE DRAWING REVISION AND RESUBMISSION.

DATE: _____ BY: _____

SMOOTH FINISH DISCLAIMER

Panels with non-textured and/or no-profile panel finishes (smooth finishes) on the exterior and interior faces may exhibit "oil canning" and flatness imperfections on the surface. Our standard panels have a stucco embossed texture on both faces that helps to reduce oil canning and any other irregularities in the exposed surface. Please be aware of this potential situation in your specification process. Such "oil canning" and flatness issues are typical and are not covered under standard warranties.



NOTICE:

- Kolpak and Harford walk-ins are compliant with UL standards.
- Door panels are UL471, UL file listing E46140.
 - Standard Evaporator coils are UL412.
 - Condensing Units are UL1995.

DRAWING #: A203369R3

UNIT #: 001

ORDER #:



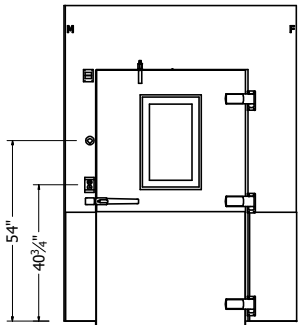
PARK HILL HIGH SCHOOL
KANSAS CITY, MO 64153 USA

KAIN MCARTHUR

| DATE | DATE | DATE | DATE | DATE | DATE |
|------|------|------|------|------|------|
| DATE | DATE | DATE | DATE | DATE | DATE |
| DATE | DATE | DATE | DATE | DATE | DATE |
| DATE | DATE | DATE | DATE | DATE | DATE |
| DATE | DATE | DATE | DATE | DATE | DATE |
| DATE | DATE | DATE | DATE | DATE | DATE |

SHEET #

AD-1 of 2



FRAME:
RECESSED 0" WITH 0" LEVELING SAND AND 0" TILE AND GROUT
EXT: GALVALUME - EMBOSSED 26 GA
EXT: KICKPLATE, ALUM .063 DIAMOND TREAD 36" HIGH
INT: GALVALUME - EMBOSSED WHITE 26GA.
INT: KICKPLATE, ALUM .063 DIAMOND TREAD 36" HIGH

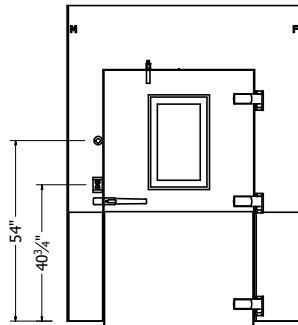
PLUG:
EXT: GALVALUME - EMBOSSED 26 GA
EXT: KICKPLATE, ALUM .063 DIAMOND TREAD 36" HIGH
INT: GALVALUME - EMBOSSED WHITE 26GA.
INT: KICKPLATE, ALUM .063 DIAMOND TREAD 36" HIGH

HARDWARE AND ACCESSORIES:
(1) 115/60/1 ELECTRICAL
(1) DOOR CLOSER - KASON 1094 BRUSHED CHROME (STD)
(1) HANDLE - KASON 27C BRUSHED CHROME
(1) HINGE - KASON 1346 BRUSHED CHROME ADJUSTABLE / SPRING ASSISTED (STD)
(1) LIGHT CENTERED OVER DOOR OPENING
(1) LIGHT FIXTURE - KASON 1803 LED W/BULB, GLOBE AND NIGHTLIGHT 120V (STD)
(1) OVERSIZED STEEL REINFORCED DOOR JAMB
(1) RAMP INTERIOR 42X20 W/ FLOOR OVERLAY - FULL COMPARTMENT, 1/8" ALUMINUM - DIAMOND TREAD (.125)
(1) SLAM BRACE (WALK-IN DOOR - 1 SET OF 2)
(1) SWITCH - PILOT LIGHT INCLUDED 120V UL (STD)
(1) THERMOMETER - 2 INCH DIAL W/6' LEAD (STD)
(1) THRESHOLD, STAINLESS STEEL 14 GA
(1) VENT - PRESSURE RELIEF, HEATED KASON 1825 (STD)
(1) VIEWPORT - 14X24 FREEZER, HEATED FRAME AND GLASS 4IN THICK 120V 50/60HZ

OFFSET -2.50
DR 42.00" x 78.00"
FR 69.00" x 94.25"

DW-1
A

| DOOR ELECTRICAL INFORMATION | | | | |
|---|-----|------|------|----------|
| DESCRIPTION | QTY | VOLT | AMP | AMP LOAD |
| HEATED AIR VENT | 1 | 115 | 0.04 | 0.04 |
| HEATED VIEWPORT | 1 | 115 | 0.75 | 0.75 |
| HEATER WIRE | 1 | 115 | 1 | 1 |
| LED LIGHT | 1 | 115 | 0.1 | 0.1 |
| 115 VOLT, SINGLE PHASE, 60 Hz, TOTAL DOOR AMPS: | | | | 1.89 |



FRAME:
RECESSED 0" WITH 0" LEVELING SAND AND 0" TILE AND GROUT
EXT: GALVALUME - EMBOSSED 26 GA
EXT: KICKPLATE, ALUM .063 DIAMOND TREAD 36" HIGH
INT: GALVALUME - EMBOSSED WHITE 26GA.
INT: KICKPLATE, ALUM .063 DIAMOND TREAD 36" HIGH

PLUG:
EXT: GALVALUME - EMBOSSED 26 GA
EXT: KICKPLATE, ALUM .063 DIAMOND TREAD 36" HIGH
INT: GALVALUME - EMBOSSED WHITE 26GA.
INT: KICKPLATE, ALUM .063 DIAMOND TREAD 36" HIGH

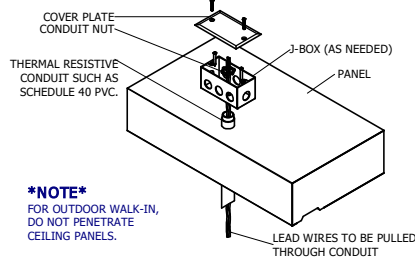
HARDWARE AND ACCESSORIES:
(1) 115/60/1 ELECTRICAL
(1) DOOR CLOSER - KASON 1094 BRUSHED CHROME (STD)
(1) HANDLE - KASON 27C BRUSHED CHROME
(3) HINGE - KASON 1346 BRUSHED CHROME ADJUSTABLE / SPRING ASSISTED (STD)
(1) LIGHT CENTERED OVER DOOR OPENING
(1) LIGHT FIXTURE - KASON 1803 LED W/BULB, GLOBE AND NIGHTLIGHT 120V (STD)
(1) OVERSIZED STEEL REINFORCED DOOR JAMB
(1) SLAM BRACE (WALK-IN DOOR - 1 SET OF 2)
(1) SWITCH - PILOT LIGHT INCLUDED 120V UL (STD)
(1) THERMOMETER - 2 INCH DIAL W/6' LEAD (STD)
(1) VIEWPORT - 14X24 COOLER, HEATED FRAME 4IN THICK 120V 50/60HZ

OFFSET -1.50
DR 42.00" x 78.00"
FR 69.00" x 94.25"

DW-2
B

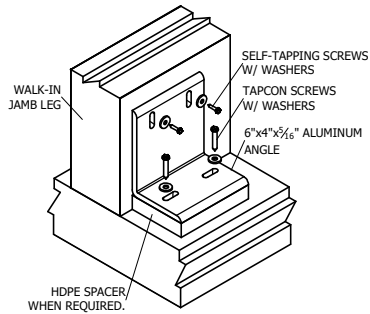
| DOOR ELECTRICAL INFORMATION | | | | |
|---|-----|------|------|----------|
| DESCRIPTION | QTY | VOLT | AMP | AMP LOAD |
| HEATED VIEWPORT | 1 | 115 | 0.28 | 0.28 |
| LED LIGHT | 1 | 115 | 0.1 | 0.1 |
| 115 VOLT, SINGLE PHASE, 60 Hz, TOTAL DOOR AMPS: | | | | 0.38 |

AT EVERY ENTRANCE CONDUIT, FORCE SEALANT AROUND THE EXTERIOR OF THE ELECTRICAL CONDUIT AND INSIDE THE CONDUIT AROUND THE WIRES. FAILURE TO ELIMINATE AIRFLOW IN THE CONDUIT WILL ALLOW MOISTURE TO DAMAGE ELECTRICAL COMPONENTS ESPECIALLY LIGHTS WHICH WILL NOT BE COVERED UNDER WARRANTY.

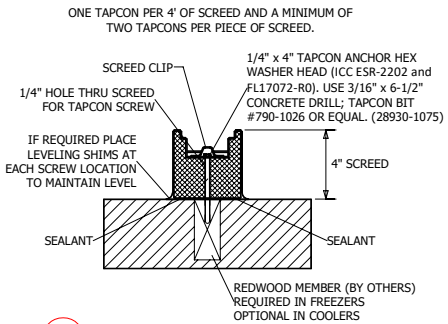


NOTE
FOR OUTDOOR WALK-IN,
DO NOT PENETRATE
CEILING PANELS.

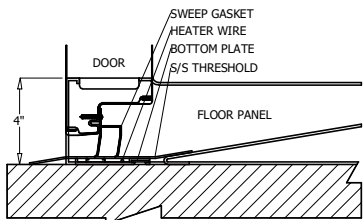
7 DETAIL - ELECTRICAL CONDUIT PENETRATION
Scale: NTS



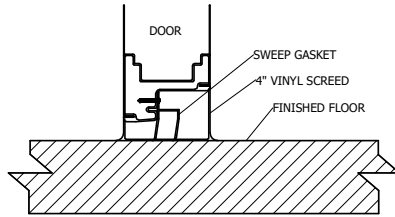
8 DETAIL - SLAM BRACE
Scale: NTS



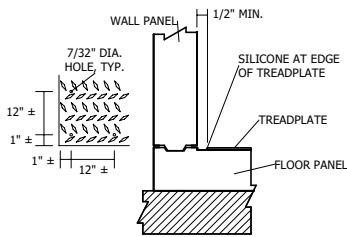
9 DETAIL - 4IN VINYL SCREED MOUNTING
Scale: NTS



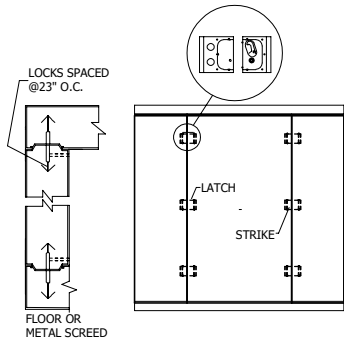
1 DETAIL - 4IN FLOOR-RAMP
Scale: NTS



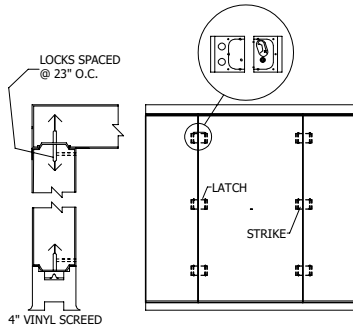
2 DETAIL - 4IN VSCD
Scale: NTS



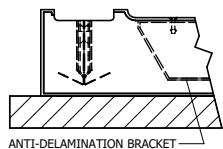
3 DETAIL - INSULATED FLOOR WITH DIAMOND TREADPLATE
Scale: NTS



4 DETAIL - PANEL CONNECTION AT FLOORS OR METAL SCREEDS
Scale: NTS



5 DETAIL - PANEL CONNECTION AT 4IN VINYL SCREEDS
Scale: NTS



6 DETAIL - FOOT-LIGHT ROLLING CART FLOOR CONSTRUCTION
Scale: NTS

| COMPARTMENT | | CONDENSING UNIT | | | | | | | | | | | | | | | | | | | | | |
|-------------|--------|-----------------|--|-------------|-----------------|------------|--------|-------|------------|------------|------------|---------|---------|------------------|-------------------|-------|---------|------------|-------------|------------------|------|---------|------|
| DESCRIPTION | TEMP F | QTY | MODEL# | REFRIGERANT | COMPRESSOR TYPE | DIMENSIONS | | | | COMPRESSOR | | | | | CONDENSER FAN MTR | | | TOTAL AMPS | MX AMP DISC | CONNECTIONS O.D. | | RCV CAP | |
| | WI | | | | | L (A) | W (B) | H (C) | LBS | HP | RLA | LRA | V | HZ | Φ | FLA | V | | | Φ | SUCT | | LIQ |
| F01 FREEZER | -10 | 1 | KPC299LZOP-2E | R404A | SCROLL | 33 | 40.125 | 22.25 | 230 | 3 | 14.3 | 88 | 208-230 | 60 | 1 | 2.4 | 208-230 | 1 | 17 | 30 | 7/8 | 3/8 | 13.6 |
| C01 COOLER | 35 | 1 | KPC69MZOP-2E | R404A | SCROLL | 33 | 25.5 | 19.25 | 152 | 3/4 | 6.3 | 48 | 208-230 | 60 | 1 | 0.5 | 208-230 | 1 | 7 | 15 | 5/8 | 3/8 | 5.8 |
| COMPARTMENT | | UNIT COOLER | | | | | | | | | | | | | | | | | | | | | |
| DESCRIPTION | TEMP F | QTY | MODEL # (DEFROST: A-AIR E-ELECTRIC) | REFRIGERANT | DIMENSIONS | | | | FAN | | HEATER | | | CONNECTIONS O.D. | | | | | | | | | |
| | WI | | | | L (D) | W (E) | H (F) | LBS | TOTAL AMPS | V | TOTAL AMPS | V | Φ | SUCT | LIQ | DRAIN | | | | | | | |
| F01 FREEZER | -10 | 1 | KEL26-105-2ECAFOEM-PR-4 | R404A | 43.625 | 15.5 | 16.75 | 62 | 1 | 208-230 | 9.8 | 208-230 | 1 | 7/8 | 3/8 | 3/4 | | | | | | | |
| C01 COOLER | 35 | 1 | KAM26-094-1ECAFOEM-PR-4 | R404A | 43.625 | 15.5 | 16.75 | 55 | 1.6 | 115 | 0 | N/A | 0 | 5/8 | 3/8 | 3/4 | | | | | | | |

| CONDENSING UNIT ASSEMBLY | | CLEARANCE REQUIREMENT | |
|---|--|-----------------------|--|
| | | | |
| EVAPORATOR - MODEL AM, EM, EL, AMB, ELB | | | |
| | | | |

DRAWING #: A203369R3
UNIT #: 001
ORDER #:

KOLPAK®
A Welbit Brand

PARK HILL HIGH SCHOOL
KANSAS CITY, MO 64153 USA

KAIN MCARTHUR

| DATE | DATE | DATE | DATE | DATE | DATE |
|------|------|------|------|------|------|
| | | | | | |
| | | | | | |
| | | | | | |
| | | | | | |
| | | | | | |

SHEET #
AD-2 of 2