

Applicable Forms



SOILL Medical Form

This form includes the Athlete's Medical History and the results of their Sports Physical Exam (submitted every 3 years)



SOILL Consent Form

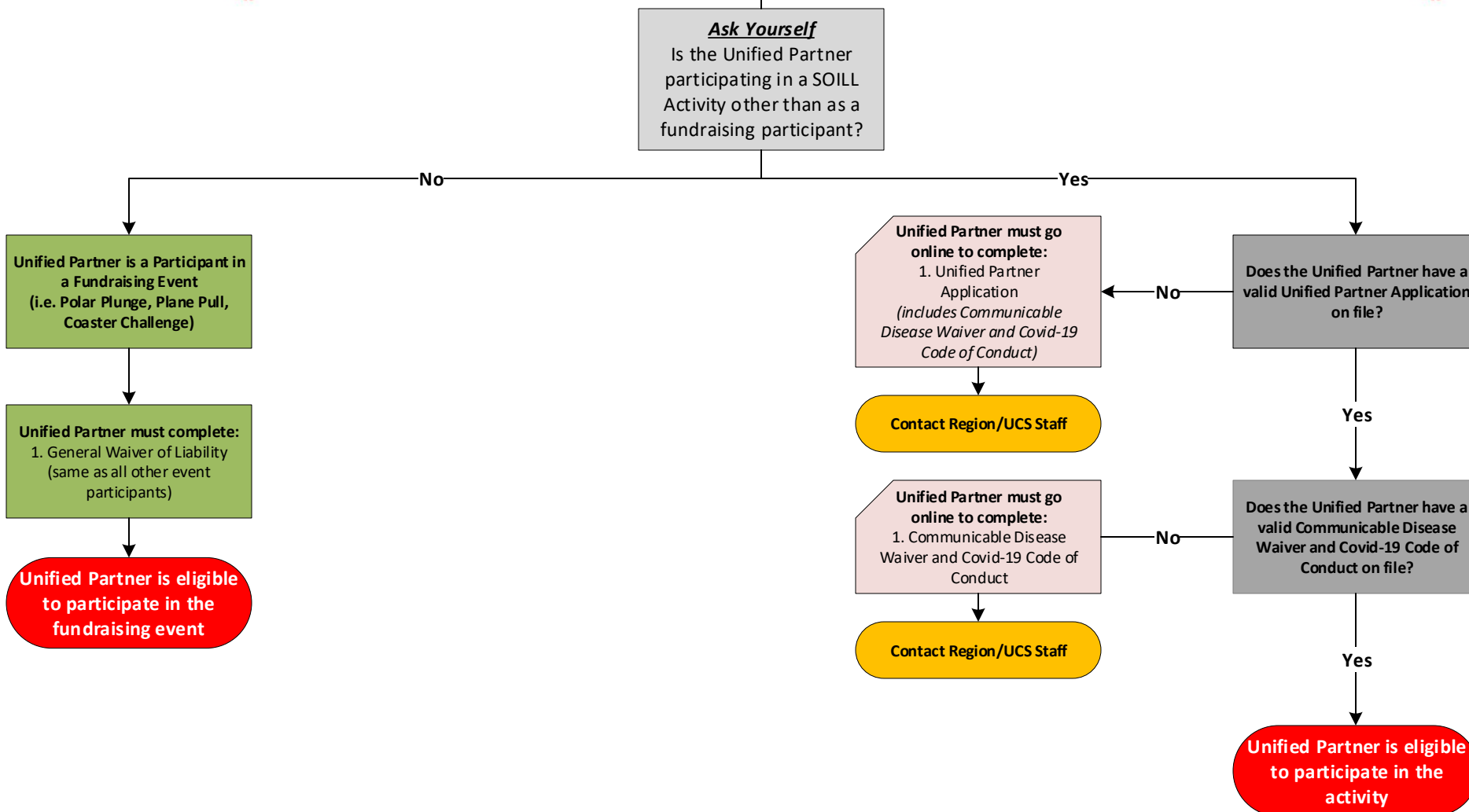
Special Olympics Illinois Athlete Consent, Waiver and Release of Liability, Assumption of Risk and Indemnification Form (submitted once)



Covid-19 Code of Conduct

This form includes the Code of Conduct related to Covid-19 protocols and is signed by each athlete or parent/guardian. (submitted once)

Unified Partner Participation



Applicable Forms



Unified Partner Application

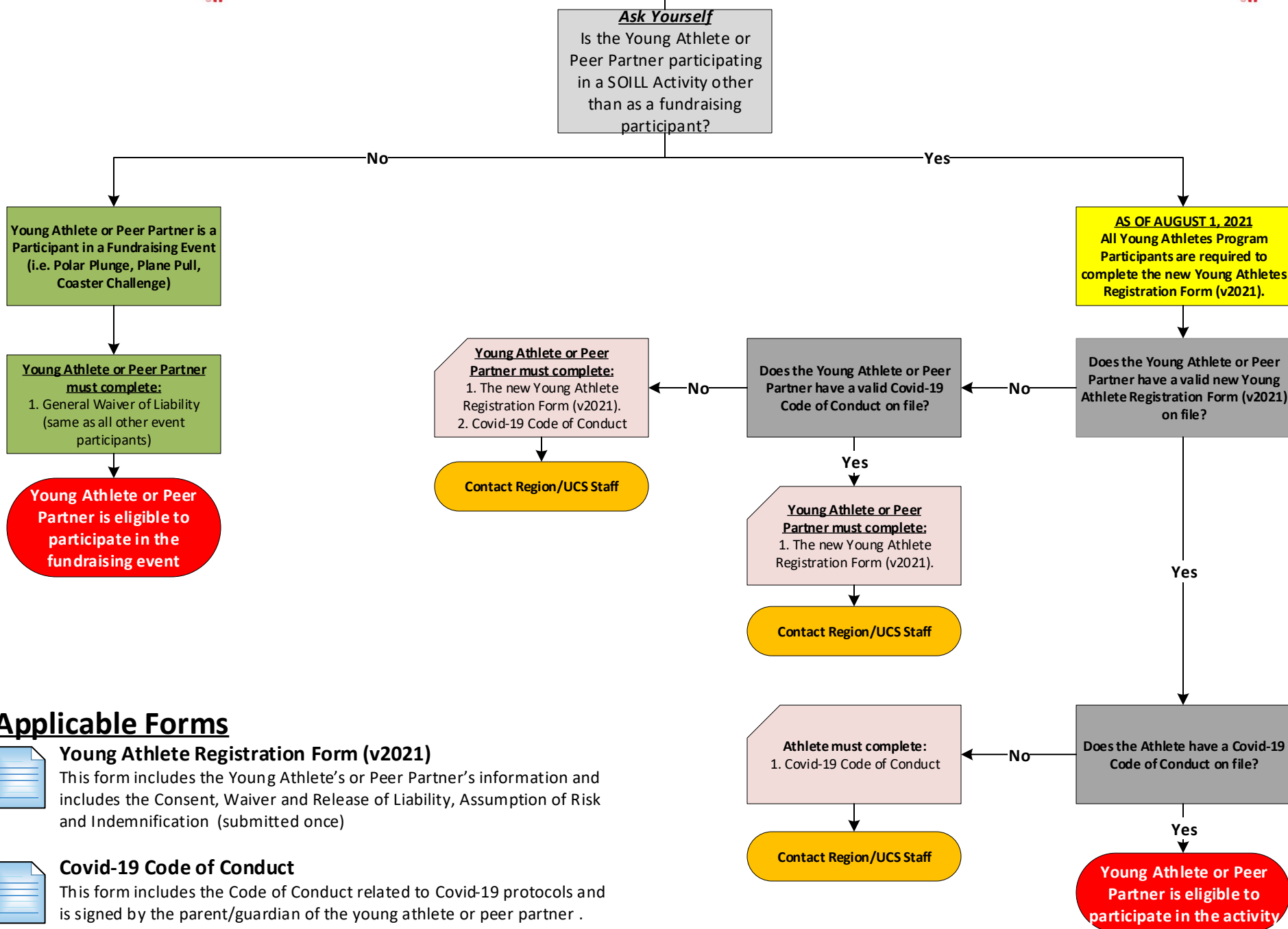
This application is completed online at <https://www.soill.org/class-a-registration/> (submitted every 4 years)



Communicable Disease Waiver and Code of Conduct

This form is completed online as part of the Unified Partner Application Process (submitted once)

Young Athletes Program Participation



Applicable Forms



Young Athlete Registration Form (v2021)

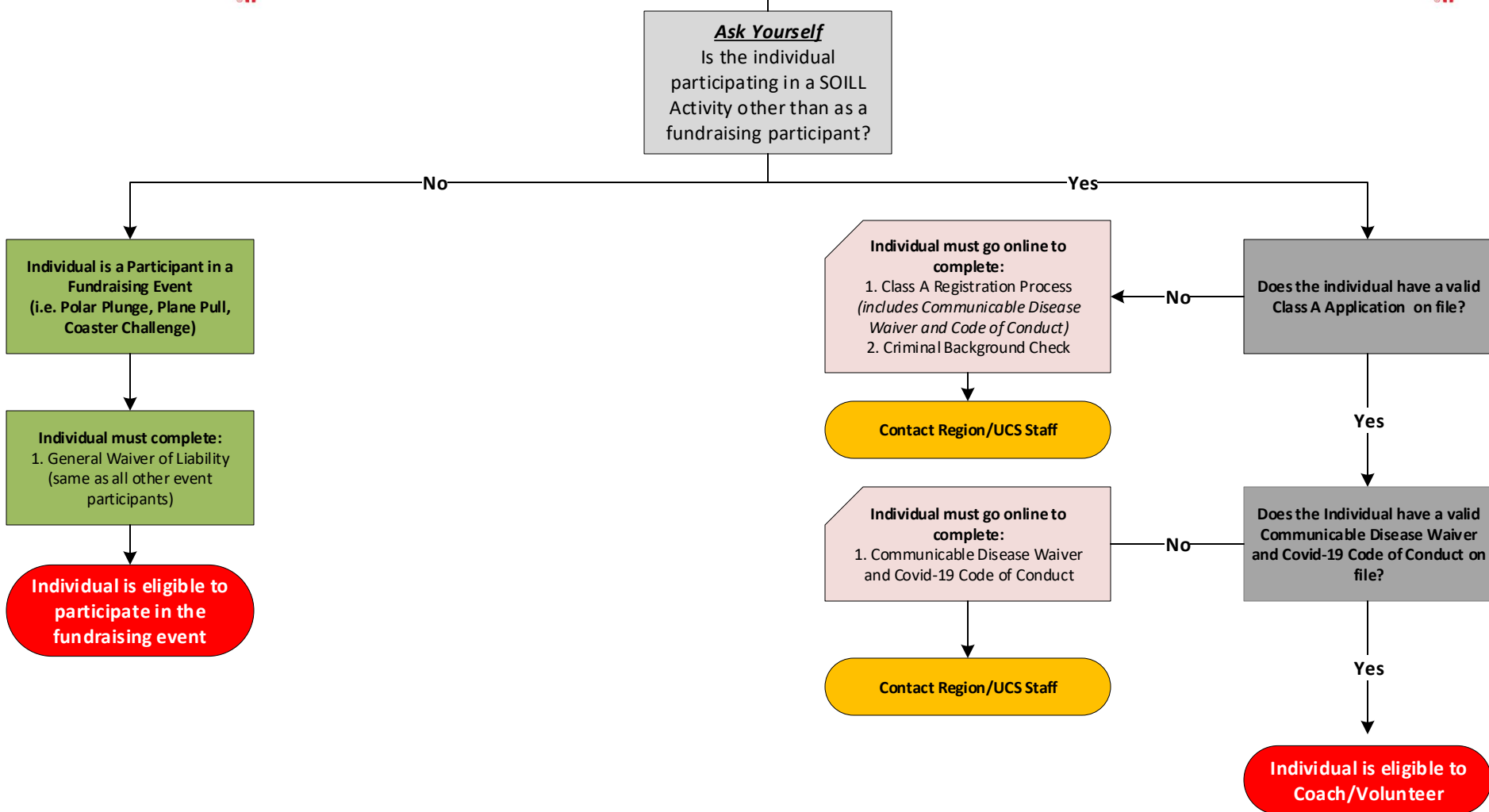
This form includes the Young Athlete's or Peer Partner's information and includes the Consent, Waiver and Release of Liability, Assumption of Risk and Indemnification (submitted once)



Covid-19 Code of Conduct

This form includes the Code of Conduct related to Covid-19 protocols and is signed by the parent/guardian of the young athlete or peer partner . (submitted once)

Coach/Class A Volunteer Participation



Applicable Forms



Class A Registration Process

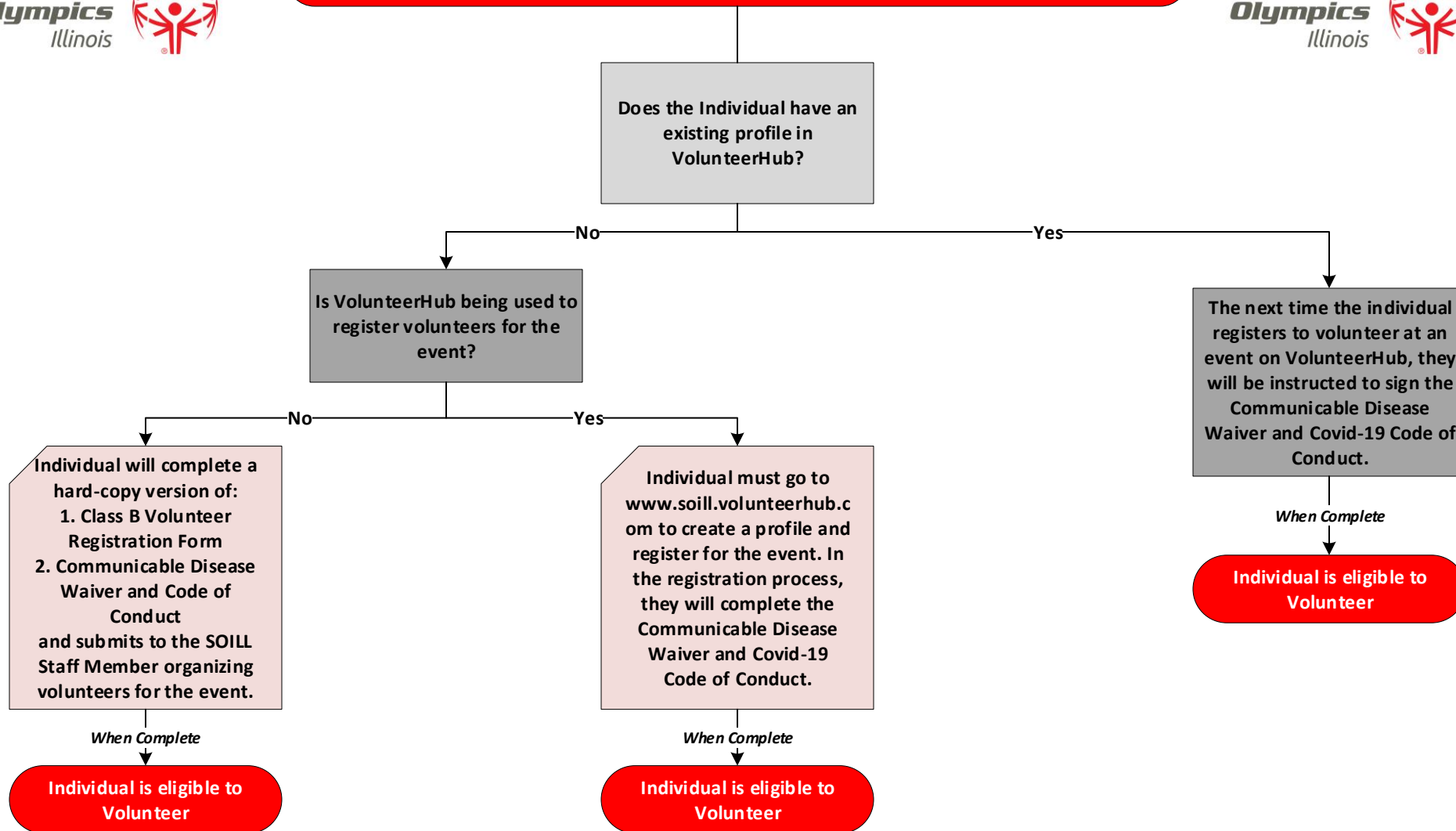
This registration process is completed online at <https://www.soill.org/class-a-registration/> (submitted every 4 years)



Communicable Disease Waiver and Code of Conduct

This form is completed online as part of the Class A Registration Process (submitted once)

Class B (Day of Event) Volunteer Participation



Applicable Forms



Class B Volunteer Registration Form

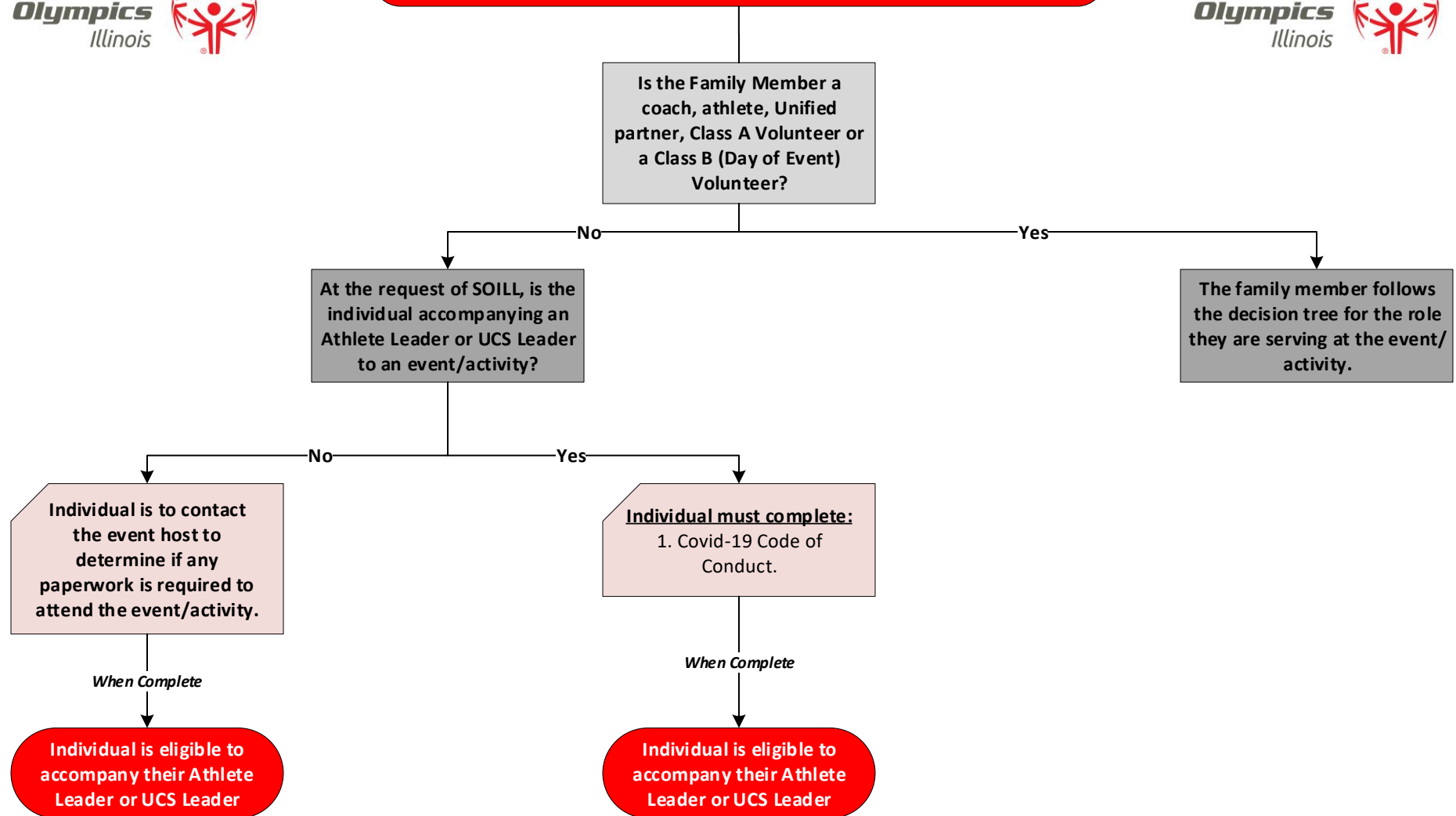
This form is used only when volunteers do not have access to register online at www.soill.volunteerhub.com. (submitted at each event)



Communicable Disease Waiver and Code of Conduct

This form is also completed when submitting a hard copy of the Class B Volunteer Registration Form. (submitted once)

Family Member Participation



Applicable Form



Covid-19 Code of Conduct

This form includes the Code of Conduct related to Covid-19 protocols.
(submitted once)