



Ballot Question Update

Levy Information

JULIE NIELSEN, SUPERINTENDENT
OCTOBER 19, 2021



SO
Wash
CO SCHOOLS



Nov. 2, 2021

OTE

Stability and Technology for our Kids

sowashco.org/vote2021

Our Current Challenges



- Our savings account is below board policy at 4.7% (2.5 weeks of operations)
- Cuts of \$9.4 million for the 2021-22 school year under a three-year budget adjustments process
- Federal, state and local funding is not keeping pace with inflation or the educational needs of our students
- Expanded dependence on technology, and the need for stable and secure infrastructure (devices, software, hardware and district business applications)
- We need to be operationally stable before we can adequately address the growth and facility needs throughout the district

What's on the Ballot

Question 1 – Stability

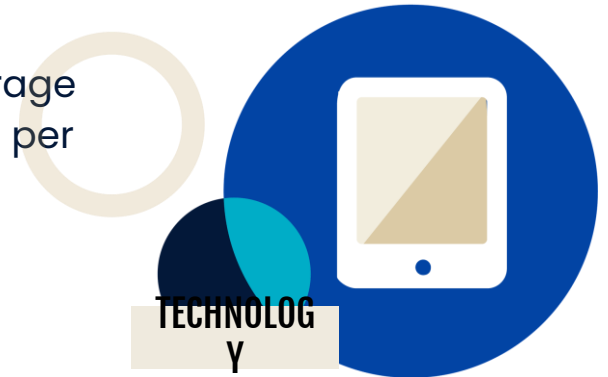
- **REVOKE AND REPLACE:** Combine and replace 2015 and 2017 operating levies with one operating levy
- **STABILITY:** No renewal until 2031 with annual increase at rate of inflation
- **INCREASE FUNDS:** From \$1,536 per student to \$1,886
- **FINANCIAL IMPACT:** The estimated tax impact on the average homeowner (\$300,000 value home) would be about \$13.16 more per month or \$158 a year



What's on the Ballot

Question 2 – Technology

- **REVOKE AND REPLACE:** Combine the 2017 capital projects levy into a new levy for technology
- **STABILITY:** No renewal until 2031
- **INCREASE FUNDS:** From \$112 to \$270 per student; or from \$2 million to \$5 million per year for technology
- **FINANCIAL IMPACT:** The estimated tax impact on the average homeowner (\$300,000 value home) would be about \$4.16 per month or \$49.92 a year



Purpose of Sharing Levy Information

1. **Inform** the community on what will be on the Nov. 2 ballot for SoWashCo Schools
2. **Define** the potential outcomes if voters approve or do not approve the ballot questions
3. **Explain** how funding is provided to Minnesota public school districts
4. **Share** information on how money is spent in the district and what is needed to maintain those investments



Levy for Learning Teams

- Small groups from each school or program in the district
 - 2-3 parents and 2-3 staff members
 - Tapped into current advisory group parents
- Developed and implemented communications plans for their sites to share levy information with their community
- Purpose is to reach more people by using those personal connections between the school and its community
- Shared ownership at the school-level for district success



Community Levy Information Sessions

Information sessions publicized via email, websites, school newsletters, flyers, events and through Levy Teams

Virtual Information Session

- Monday, Oct. 11
- 22 live viewers (98+ views recording)

In-Person Information Session

- Wednesday, Oct. 13
- Three participants



Levy Information Sessions



In addition to the outreach of the Levy Teams, we're continue to hold several smaller information sessions:

- Cities of Woodbury, Cottage Grove, St. Paul Park and Newport (live streamed on cable)
- Rotaries and Chambers
- Senior Center
- Staff
 - District Service Center
 - District Program Center
 - Special Education
 - Transportation
- Board Candidates
- District Advisory Teams
- Local Legislators

Resource Toolkit



sowashco.org/vote2021

- Ballot question flyers
- Ballot question postcards
- Fact sheet
- Bookmark
- Vote early flyer
- Poster
- Sign
- Public PowerPoint presentation
- Levy videos
- Social media posts

Trending Questions



- Where's the budget transparency?
- Why are residential school taxes so high?
- Question 1 (operating levy) is tied to inflation. Can we estimate future inflation rates?
- Will budget cuts be restored if Question 1 (operating levy) is approved?

Tax Impact

Ballot Question	Annual Increase	Tax Impact
Question 1 Operating Levy	<ul style="list-style-type: none"> • Additional \$350 per student • \$6.9 million per year • Inflation increases 	\$13.16 more per month
Question 2 Capital Projects Levy	<ul style="list-style-type: none"> • Additional \$158 per student • \$3 million per year 	\$4.16 more per month
Total Net Tax Impact	<ul style="list-style-type: none"> • \$9.9 million per year 	\$17.32 more per month

Estimated tax impact on the average value home of \$300,000.

SO
Wash
CO SCHOOLS



Nov. 2, 2021

OTE

Stability and Technology for our Kids

Visit sowashco.org/vote2021

Call 651-425-2888

Email vote2021@sowashco.org