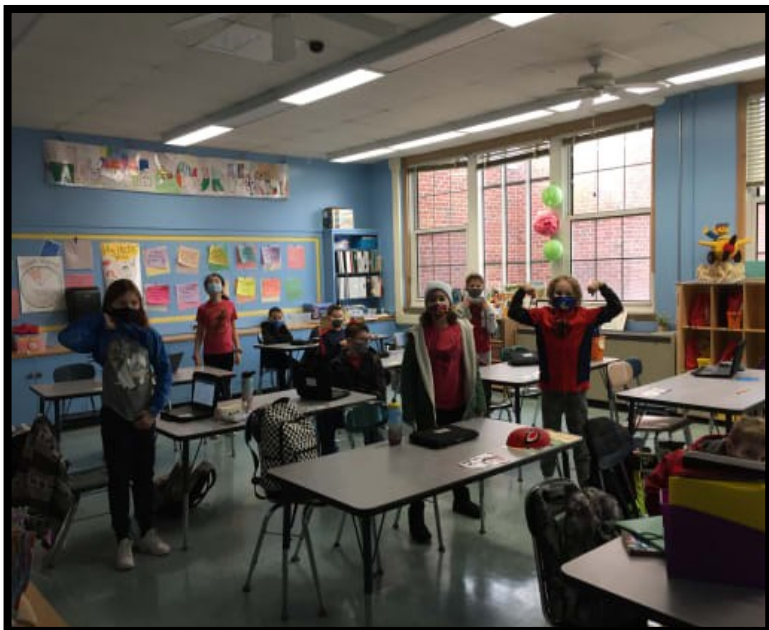


# Suffield Public Schools

## COVID-19

### Health & Safety Procedures

### 2021-2022 School Year





## Suffield Public Schools commitment to health & safety in our schools

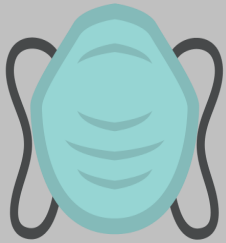
Suffield Public Schools is committed to maintaining fully open schools and sustained operations for the remainder of the COVID-19 pandemic. Due to the unknown and evolving nature of the pandemic and the ever-changing federal and state guidance and regulations, it is important to note that we must be flexible and understanding of the challenges we all face and the decisions we must make.

Experiences from the past year have shown us that our district can safely provide in-person instruction and minimize the potential spread of COVID-19 when proper health & safety precautions and protocols are in place. Our goal is to accomplish this through layered prevention strategies outlined on the following pages.

# General Health Procedures & Protocols (Layered Prevention Strategies)

*COVID-19 prevention strategies remain critical to protect people, including students, teachers and staff, who are not fully vaccinated especially in areas of moderate-to-high community transmission levels.*  
-CDC K-12 Guidance (July, 2021)

**Vaccination:** Currently available to everyone 12 years and older. While the State has issued a vaccine requirement for all school employees, students are not required to be vaccinated.



**Mask Use:** Masks will remain mandatory inside PreK-12 schools and on buses for all staff & students whether vaccinated or not until at least September 30, 2021 per the Governor's Executive Order 13A. Mask wearing is one of the most important strategies we have to minimize the spread of transmission in our schools. Only students who provide medical documentation of a special circumstance precluding them from wearing a mask will be allowed to be maskless.

**Physical Distancing:** The CDC and the DPH recommend 3 feet of physical distancing between students within classrooms and other settings when possible with the goal of limiting potential virus spread.

**Cohorting:** At the elementary level (AWS & MIS), all efforts to keep students in cohorts (or similar groups) will remain in effect this school year. At the secondary level (SMS & SHS), due to a large percentage of students being vaccinated, we are allowing typical routines, class sizes and schedules.



# Contact Tracing & Quarantine Protocols

## **Contact Tracing:**

Per CDC guidance, *“In PreK—12 classroom settings, the close contact definition excludes students who were within 3—6 feet of an infected student or staff member (laboratory confirmed or a clinically compatible illness) if both the infected student and the exposed student/staff member(s) correctly and consistently wore well-fitting masks the entire time.”*

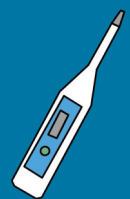
*For the 21/22 school year, there will not be districtwide communications regarding COVID-19 cases unless there is a significant increase in cases within our schools. In terms of those deemed close school administration to inform families/staff within the classroom of is confirmed.*



*contacts, families will be called by them that their child has been identified, a notice will be sent to all families the COVID-19 positive case when one*

## **Quarantine Protocols:**

- Students who have tested positive for COVID-19 cannot attend in-person learning for a period of 10 days;
- Notice of exposure will be sent to families if there is a positive case in a child's class
- Vaccinated close contacts will not be required to quarantine if they are asymptomatic;
- Vaccinated close contacts will need to mask indoors for 14 days following exposure when masking is not mandated; a negative test after day 5 will eliminate the need for masking of close contacts when masking is no longer required;
- Unvaccinated students who are close contacts in the schools will be required to quarantine for 10 days (return on day 11);
- Unvaccinated students will have a 7 day quarantine period with a negative COVID-19 test on day 5 or after, (return on day 8) or 10 day quarantine without a negative COVID-19 test (return on day 11);
- Student athletes will need to follow CIAC Quarantine Guidelines for Athletics participation;
- If a student/staff member goes home ill; sees their physician and a discrete diagnosis is given (such as strep throat), the student/staff member can return to school once they are fever free for 24 hours without fever-reducing medication.





## REMOTE LEARNING

The full-time Remote Learning option offered during the 2020-2021 school year will not be available for the 2021-2022 school year. The CSDE is currently developing a distance learning model for grades 9–12 for the 2022-2023 school year.

- Students who are absent from school for illnesses will be noted as absent in our daily attendance and they will be required to make up all classroom assignments (same as before COVID-19).
- Students who are isolated at home as a result of a positive COVID-19 test or on a district assigned COVID-19 quarantine will be able to access the classroom live feed and complete classroom assignments.
- Students who are isolation or in a quarantine related to COVID-19 will not be marked absent if they are in attendance “online” during class.
  - Classroom teachers will be focusing instruction on in-person learners.
- Instructional support for isolated or quarantined students will be provided by Recovery teachers (unassigned), Interventionists and/or Academic Support.



# Cleaning Protocols, Facility Plans & Common Area Procedures

**Cleaning & Ventilation Protocols:** Contaminated services are no longer thought to be a significant contributor to the spread of COVID-19. The DPH has advised that routine daily cleaning of schools and disinfection of bathrooms, locker rooms, cafeterias and health offices is sufficient to prevent the transmission of COVID-19. The district will continue to contract with an engineering firm to review the operations and functionality of all HVAC system components throughout our school facilities to ensure proper ventilation is occurring. Classrooms windows will remain open when permissible to allow proper air flow.



**Facility Plans/Building Use/Visitors:** All facilities can be utilized this school year by public groups upon request through our *Building Use Calendar* found on the district website. However, any group doing so must adhere to the most current state and local health district protocols and guidelines (mask wearing, social distancing, proper cleaning after use, etc.) that school staff and students follow. We are also allowing visitors and volunteers providing educational or therapeutic services for students to our buildings during school hours again. Visitors will be required to follow all safety rules like providing proper identification and to follow all COVID-19 protocols and guidelines while in our schools.



**Common Area Procedures:** School leaders will plan for physical distancing to the greatest extent possible in all school settings. Staff & students will try to maintain at least three feet of separation when inside while wearing masks and during activities where masks are not worn (cafeteria). To reduce the potential for exposure, students should remain in cohorts as much as possible in classrooms, project groupings and cafeterias. Cafeteria seating will be spaced out and there will be limits on the number of students at tables. Arrival/dismissal times will be staggered to limit the number of students in hallways. Teachers will maintain seating charts and desks and tables will be arranged to maximize physical distancing.



**SUFFIELD PUBLIC SCHOOLS**

# Resource Links

**[Suffield Public Schools website \(School Model Status\)](#)**

**[Center for Disease Control and Prevention](#)**

**[CT Department of Health \(COVID-19 Resources & Guidance\)](#)**

**[2021—2022 Protocols FAQ](#)**