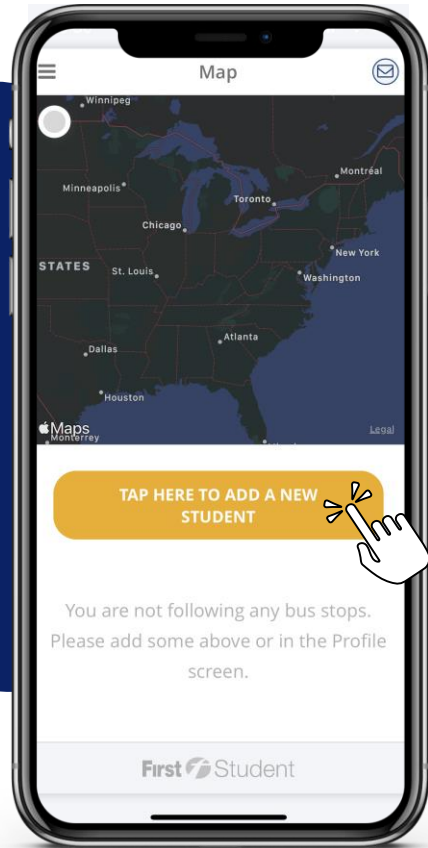




Step 1:
Download app, Register
& Log-In



FirstView® Self-Guided Tools

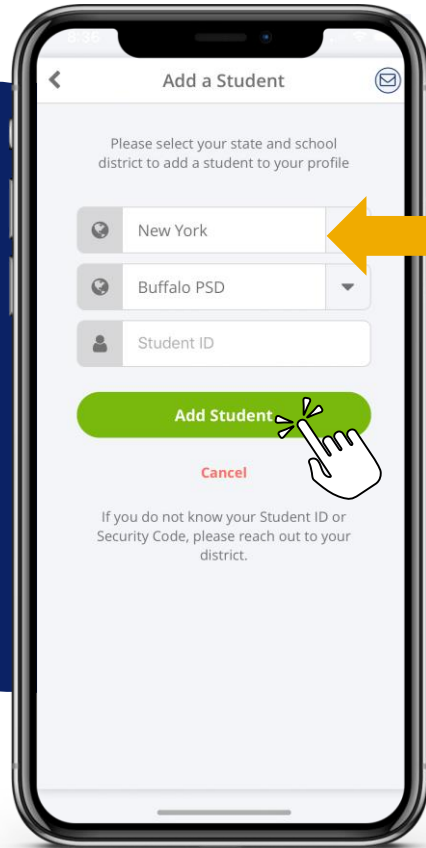


Step 2:

Click the yellow message box to add your first student, or you can click profile and “Add a Student” in the app menu



FirstView® Self-Guided Tools



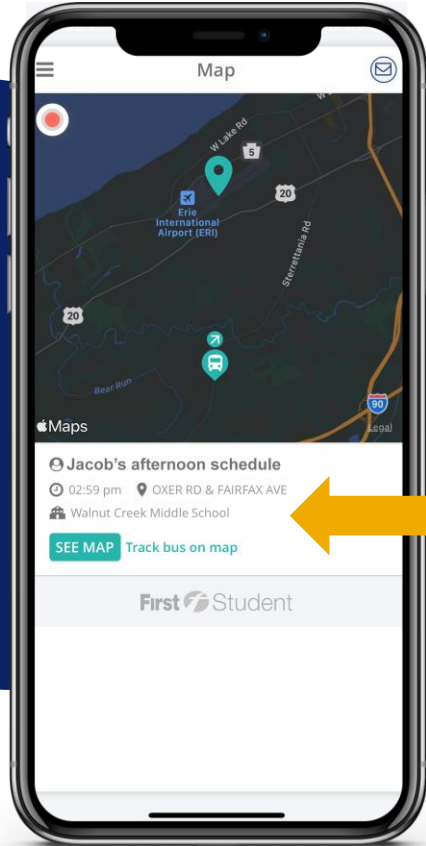
Step 3:

- Select your state and school district from the drop down
- Add your Student ID*
- Click 'Add Student'



* If you do not know your student ID, please contact your school district.

FirstView® Self-Guided Tools

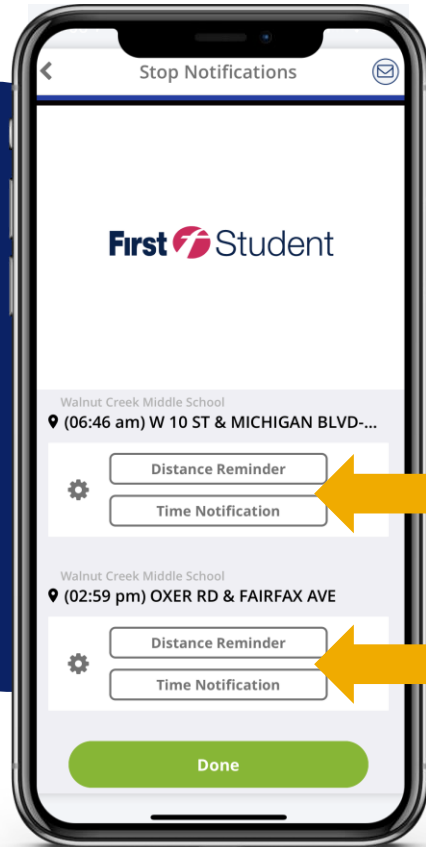


Your student is added!

Your student's stop information is now displayed on the map for tracking



FirstView® Self-Guided Tools



Setting Up Alerts

Setup optional alerts for your student's routes. These can be added from the profile section and selecting your student's name under 'Student Stops'

