



2019-20 Edina Public Schools Annual Report to the Community

On March 10, 2020, we made what we called then a “difficult decision” to cancel the EHS Choir trip to New York City. The novel coronavirus was just beginning to take hold on the East Coast and it was the first time the virus impacted Edina Public Schools. Little did we know how difficult the decisions ahead of us would be.

Throughout the past year, partnerships with families and community organizations have helped students and staff navigate the continuously changing conditions of COVID-19 and State mandates. Through innovation and continuous improvement, Edina staff provides a learning environment that is engaging and creative, while also



mitigating the risk of virus transmission. And through it all Edina students continue to show us their resilience in the face of hardship and their pride in their work.

In this report, we’ve added information about the district’s response to COVID-19 because the story of the 2019-20 school year could not be told without it. A third of the school year was conducted in crisis mode, yet learning continued in circumstances that families and staff could not imagine back in March.

The adapting, imagining and learning continue as we near the one-year mark of living and working within the confines of a worldwide pandemic. Our partnership with all of you is our strength and the foundation for student success in these extraordinary times. As we look forward, we are hopeful and profoundly grateful for your ongoing support and appreciation. Thank you.

John W. Schultz, Ph.D.
Superintendent

Edina Learners

Source: Minnesota Department of Education Report Card

K-12 STUDENTS
2020 Total Enrollment - 7,791

- 28.3% Students of color
- 10% Free/reduced lunch
- 12% Special Education services
- 5% English Learners
- 19.5% Open enrolled

EARLY LEARNING CENTER
559 Little Learners
125 Parent Learners

COMMUNITY EDUCATION
11,215 Youth enrollments in full-year Enrichment and Childcare
2,522 Adult enrollments

Edina Staff

- 36% Teachers
- 45% Other staff (incl. nonlicensed)
- 13% Paraprofessionals

- 4% Other licensed professionals
- 2% Administrators

Edina Public Schools
Superintendent — John W. Schultz, Ph.D.
Concord Elementary — Principal Paul Domer
Cornelia Elementary — Principal Lisa Masica
Countryside Elementary — Principal Karen Bergman
Creek Valley Elementary — Principal Kari Dahlquist
Highlands Elementary — Principal Katie Mahoney
Normandale Elementary — Principal Chris Holden
South View Middle School — Principal Tim Anderson
Valley View Middle School — Principal Shawn Dudley
Edina High School — Principal Andy Beaton
Community Education Services — Director Val Burke
Early Learning Center — Coordinator Leah Byrd

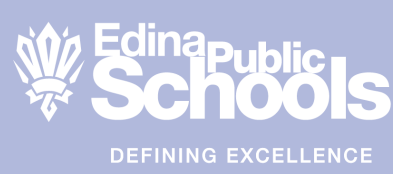
Edina School Board
 Erica Allenburg, Chair
 Leny Wallen-Friedman, Vice Chair
 Ellen Jones, Clerk
 Matt Fox, Treasurer
 Owen Michaelson, Asst. Treasurer
 Julie Greene, Asst. Clerk
 Janie Shaw, Asst. Clerk

5701 Normandale Road
Edina, MN 55424
Main: 952.848.3900
Enrollment: 952.848.4585

The Annual Report to the Community is a publication of Edina Public Schools. It is mailed to residents of the Edina School District 273 as an insert to the EPS Experience newsletter.

Questions or comments are welcome at communications@edinaschools.org or 952.848.3919.

For more information about Edina Public Schools, visit www.edinaschools.org.





Edina Public Schools Educational Competencies

Opportunities for Edina learners extend beyond rigorous academic choices. These six skills have been identified as key to success in college, career and life. They are embedded in academics and in the myriad opportunities in arts, extracurricular activities and community involvement that are available to all students. And every year, Edina students exceed expectations.

25 seniors named **National Merit Semifinalists**, 22 named Commended Students ♦ EHS band and orchestra



performed in tandem with youth steel orchestra from St. Thomas, U.S. Virgin Islands ♦ Normandale Elementary received **quality seal** granted

 *Globally competent individual*

by French Ministry of Foreign Affairs and Education ♦ South View named **Unified Champion School of Year** by

Special Olympics Minnesota ♦ EHS students **traveled to Andong, South Korea** for two week student exchange ♦ EHS Hip Hop Dance Team **first**



 *Responsible, engaged citizen*

place at **Nationals** ♦ 137 graduates received **bilingual seals or certificates** ♦ Senior Olivia Pierce received the

2019 Tom Oye Award, honoring **socially-minded pursuit of equity and fairness** ♦ Around 150 students participated in Community Education's



 *Effective communicator and collaborator*

intergenerational Dear Edina pen pal program ♦ EHS team wins state **Economics Challenge Championship** ♦ Concord Elementary **third graders published novel**


during the pandemic ♦ EHS junior 1 of 2 **selected to represent Minnesota** at U.S. Senate Youth Program in Washington, D.C. ♦ EHS students used college application expertise to **raise awareness and funds** for Edina Meal Fund COVID-19 Response ♦ **84% EHS students participated** in more than 120 sports, arts and activities

— 1 in 3 take one or more **leadership roles** ♦ Senior Ikraan Hassan 1 of 500 in country to receive **Dell Scholarship** ♦ Concord fifth grader's **"Better Together"** sculpture design installed in Centennial Lakes Park ♦ Senior Avahnii Lewis selected by City Pages as one of Nine Most **Inspiring Teens** in Twin Cities ♦ Hornet athletes win **4 state championships** in fall season ♦ Student Project Earth club helped fund **installation of EHS educational solar panels** ♦ Six EHS students received **Aspiration in Computing Awards** presented from NCWIT ♦ 179 students earned letters for **Community Service** ♦ Piece of Cake Edina robotics team was **State Champion**



 *Innovative thinker and creator*



 *Motivated life-long learner*




 *Well-rounded person*


Read more at edinaschools.org, click on Achievements.


Response to COVID-19

The onset of the COVID-19 pandemic last March required a crisis response that was met with extraordinary efforts by district staff, students

 EPS received \$2.1 million in **CARES Act funding**, used to support purchase of PPE supplies, additional Student Support Services, technology needs, Tier 1 childcare, mental health support, and paraeducators to support in-person and distance learning.

 247 children were **served by Tier 1 childcare** provided by the district.

 Edina MealFund, the Edina Education Fund, and Edina Give and Go collaborated to quickly create the **COVID-19 Response Fund**, raising \$100,000 to purchase and distribute evening meals for families in need.

 District Media and Technology Services worked tirelessly to **provide laptops and iPads for students** to ensure access to school work and classes. They established over 40 hotspots for families without internet, and connected families with affordable services through Internet Essentials.

Community Partnerships and Support

Community members, including EHS students, volunteered over 11,300 hours as speakers and helpers **in classrooms** around the district.
edinaschools.org/volunteer

Edina Education Fund contributed \$372,000 for grants, programs, activities and scholarships.
edinaedfund.org

Edina Give and Go unlocked over 400 academic, arts, and athletic opportunities for 236 EPS students facing economic disadvantage.
edinagiveandgo.org

MealFund gave \$9,003.90 towards school lunches, with ongoing donations from community.
edinaschools.org/MealFund

Edina Resource Center connected over 3,200 individuals and families with assistance for food, housing, healthcare, and financial support.
edinaresourcecenter.com

An anonymous donor gave \$43,500 to **clear overdue lunch account debt** in the district.

World's Best Work Force

The State asks districts to develop plans and set goals that align curriculum and instruction to five key areas:

- School readiness
- Third grade reading competency
- Closure of racial and economic achievement gaps
- High school graduation
- College and career readiness.

Last year, goals were met in some categories, others not yet. State MCA tests were not administered last spring due to COVID-19, thus some goals could not be measured.

See the district's report to the state at edinaschools.org/WBWF

Outstanding Staff

- 90% Educators with **advanced degrees**
- 20% Staff with **national certification** in their field
- 98% Educators with **3+ years of experience**
- 58% Educators with **10+ years in district**
- South View receives **Trailblazer Award** for personalized learning
- EHS educator Steve Cullison named **Economic Educator of Year**



Facilities Progress

- Edina Community Center construction includes **new air handlers, redesigned Board Room and move of Community Ed offices** to 3rd floor, making way for public offices on 1st floor
- 1,684 additional **solar panels installed** at Transportation facility, Cornelia Elementary and EHS
- Cornelia Elementary received **district's 5th Energy Star**

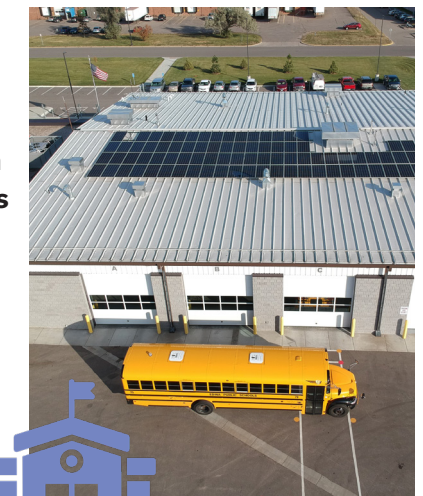
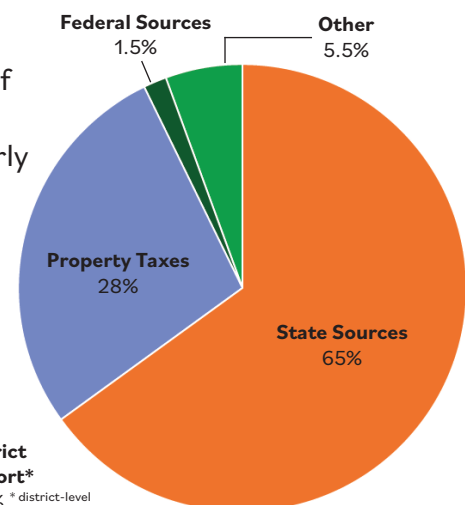


Photo courtesy of Solar Pod.

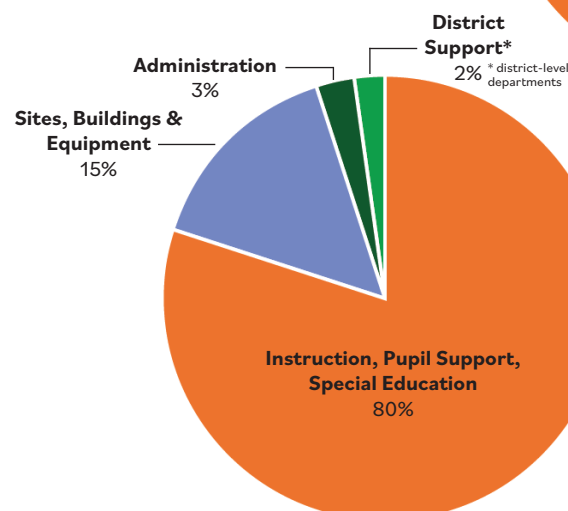
Fiscal Stewardship

- **Aaa Credit Rating** by Moody's — one of three districts in state with highest rating
- 426,911 **breakfasts and lunches** served at total operational cost of \$2.6 million
- 8,314 **students transported** nearly 800,000 miles via 111 owned and contracted buses at total operational cost of \$5.4 million

2019-20 General Fund Revenue \$120,467,775



2019-20 General Fund Expenditures \$119,781,196



For more details, visit:
edinaschools.org/districtbudgets



EHS 1 of 2 MN schools in Top 500 of America's Best STEM High



EPS ranked Top School for Student Success in Minnesota



Among Minnesota Public Schools:
#1 Best College Prep
#2 Best School with Gifted & Talented Programs
#2 Best School for STEM
District A+ Overall Niche Grade



EHS ranked among Top 10 public non-charter high schools in Minnesota

and families, and through partnerships with the community.



Over 84,000 individual **meals were delivered to families** throughout the district.



Edina Community Ed summer care program safely served 200 students. Summer enrichment **programming for youth safely served 3,160 students** in 286 youth summer classes and camps. 77 students attended with \$25,111 in scholarships through a partnership with Edina Give and Go.